



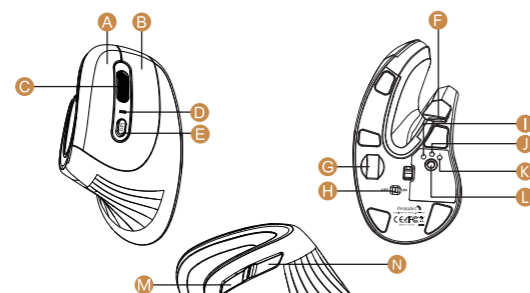
EM11 NL

User Manual

2.4G+Bluetooth Dual-Mode Ergonomic Mouse

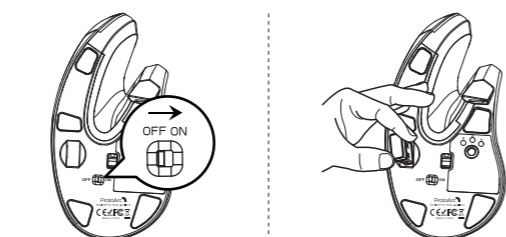
support@protoarc.com
www.protoarc.com
United States: (+1) 866-287-6188
Monday-Friday: 10am-1pm, 2pm-7pm (Eastern Time)
*Closed during Holidays

Product Features

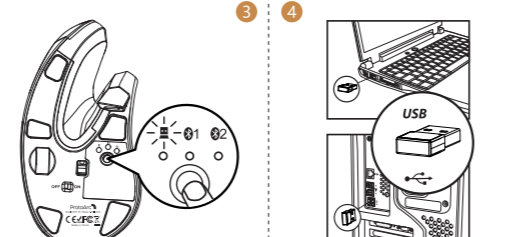


- A Left Button
- B Right Button
- C Scroll Wheel
- D DPI Indicator / Low-Battery Indicator
- E DPI Button
- F TYPE-C Charging Port
- G USB Receiver
- H Power Switch
- I 2.4G Indicator
- J Bluetooth 1 Indicator
- K Bluetooth 2 Indicator
- L Channel Switch Button
- M Forward button
- N Backward button

2.4G USB Connection

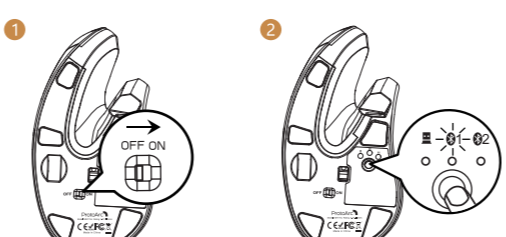


1. Turn the power switch to ON.
2. Take out the receiver.

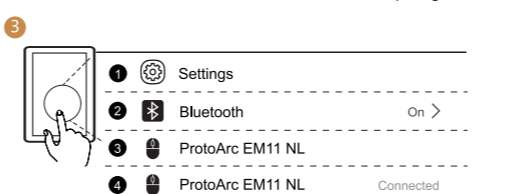


3. Press the channel switch button at the bottom until the white light comes on to enter 2.4G mode.
4. Insert the usb receiver into your computer's usb port.

Bluetooth Connection



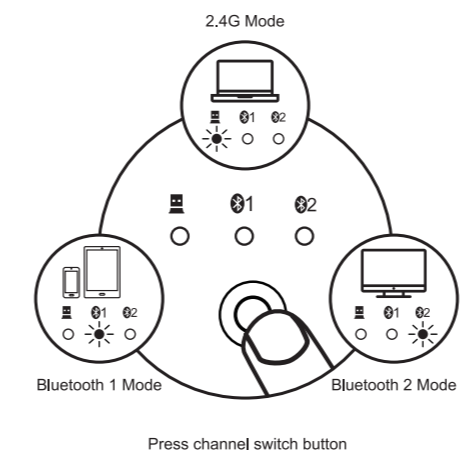
1. Turn the power switch to ON.
2. Press the channel switch button to 01 or 02 Bluetooth channel and the white light flash slowly. Press and hold the channel switch button for 3-5 seconds until the white light flashes quickly, and the mouse enters the Bluetooth pairing mode.



3. Turn on the Bluetooth settings on your device, search or select "ProtoArc EM11 NL" and start Bluetooth pairing until the connection is completed.

How to Switch Connection Mode

After Bluetooth and USB wireless mode is connected, press channel switch button to switch between different devices. One press can only switch mode once. You may need to press it twice to get the mode you want.

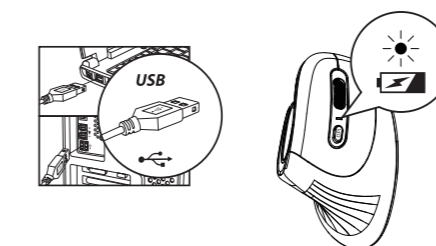


How to Charge the Mouse

When the battery is low, the low battery indicator light will start flashing in red until the mouse is turned off. Using the Type-C charging cable to recharge. The red indicator light will remain on during charging. It will take 2-3 hours for charging, and the charging indicator light will turn off once the mouse is fully charged.



Note: Best to use original data transmission cable.



Specifications

Basic Parameters

Engine: Optical
DPI: 1000-1600-2400
Lithium battery: 500mAh
Click Life: 3 million+
Dimension: 138 x 69.2 x 68.1mm
Weight: 3.9oz(112g)

Bluetooth Transmission Parameters

Transmission distance: 8m
Working Voltage: 3.7V
Working Current: 5mA
Frequency: 125Hz
System requirements: Bluetooth-enabled device;
Windows 8, Windows 10;
Mac OS X 10.12 or higher version;
Android 4.3 or higher version.

2.4G Wireless Transmission Parameters

Transmission distance: 8m
Working Voltage: 3.7V
Working Current: 5mA
Frequency: 250Hz
System requirements: Devices with USB ports;
Windows XP, Windows 7, Windows 8, Windows 10;
Mac OS X 10.12 or higher version.

Package List

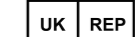
- ▶ 1 x Wireless Mouse
- ▶ 1 x Type-C charging cable
- ▶ 1 x USB receiver
- ▶ 1 x User manual

Manufacturer

Dongguan Togran Electronics Technology Co.,Ltd

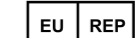
Address

No.110, Shidan Middle Road, Shijie Town, Dongguan City, Guangdong Province, China, 523290



AMANTO INTERNATIONAL TRADE LIMITED

The Imperial, 31-33 St Stephens Gardens, Notting Hill, London, United Kingdom, W2 5NA
Email: AMANTOUK@hotmail.com
Tel: + 447921801942



UAB Tinjio

Pranciškonų g. 6-R3, Vilnius, Lietuvos, LT-03100
Email: Tinjiocd@outlook.com
Tel: + 370 67741429