



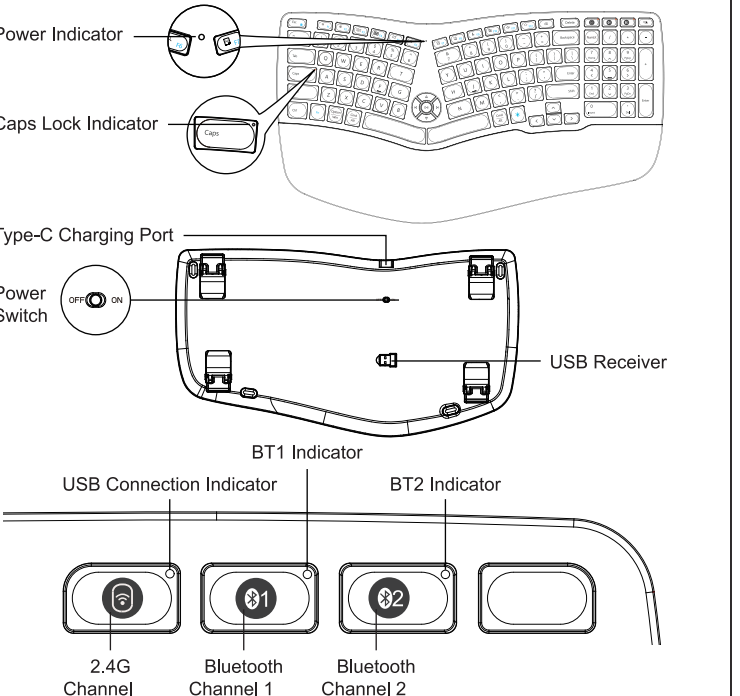
EK01

User Manual

2.4G + BT1 + BT2
Ergonomic Split Keyboard with Backlit

support@protoarc.com | www.protoarc.com

Product Features



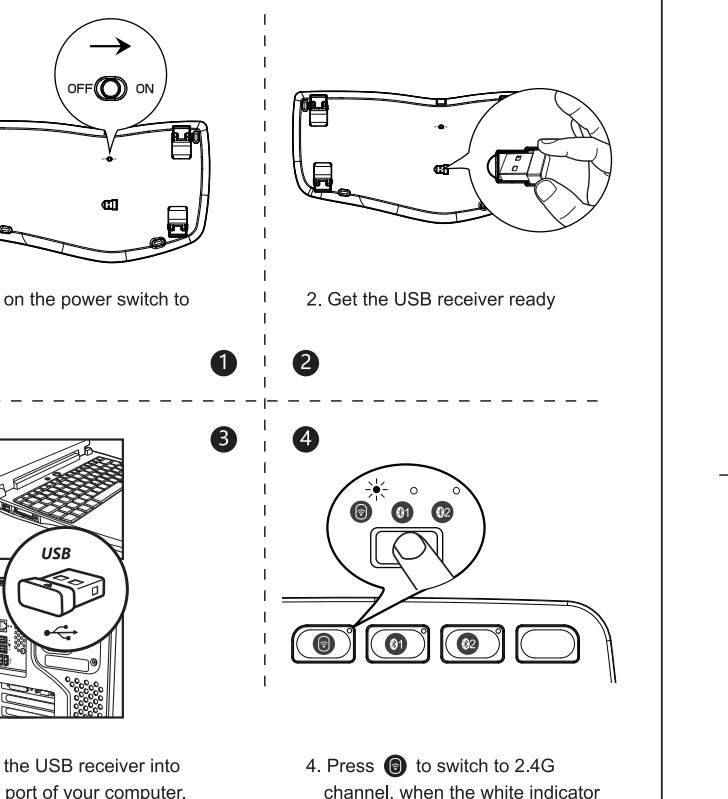
Keyboard Backlit Switch:

The first press turns on the backlight dimly;
The second press, brightens to medium brightness;
The third press, turns the light to its brightest;
The fourth press, turns off the backlight.

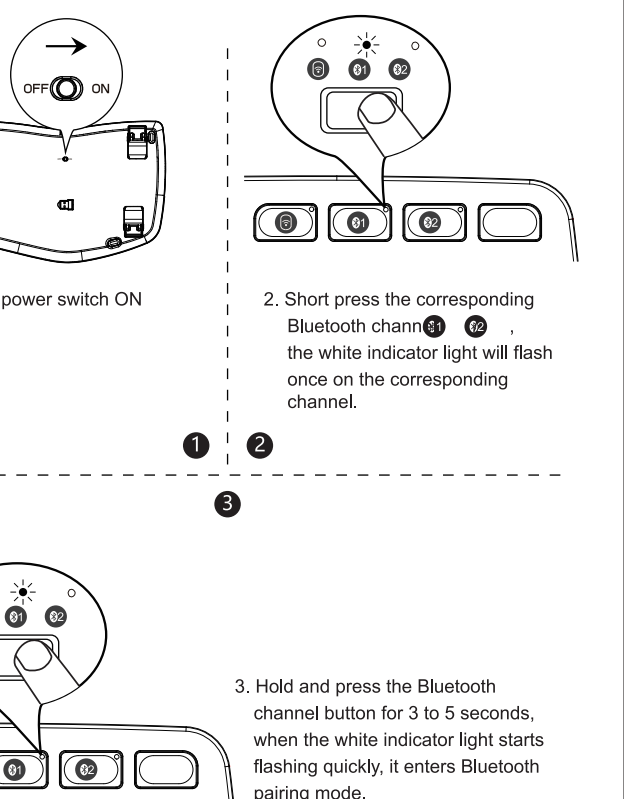
The keyboard will enter deep sleep mode after 30 minutes without operation, the backlight will be turned off automatically, you can press any key to wake the keyboard.

Note: the backlight needs to be turned on again.

2.4G Connection

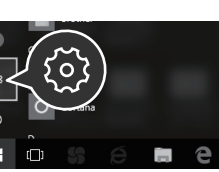


Bluetooth Connection

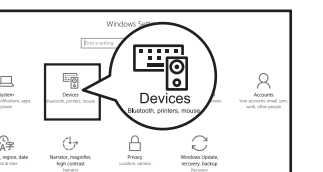


Windows 10 OS

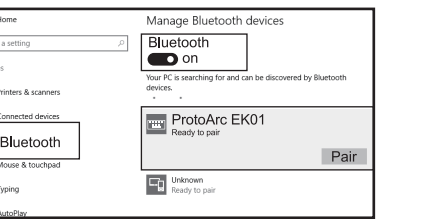
4. Click "Bluetooth Devices".



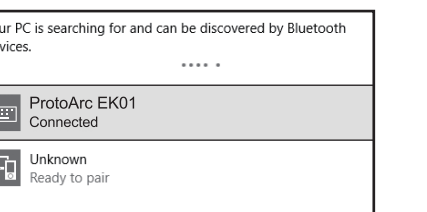
5. Click "Add or Remove Bluetooth Devices".



6. Your computer will automatically search for "ProtoArc EK01", then click "pair".



7. "ProtoArc EK01" is now connected.



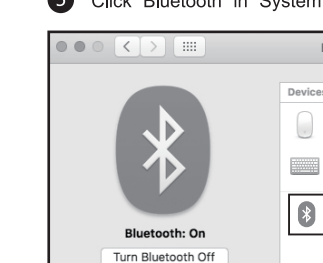
Mac OS

Please complete the Bluetooth connection step ①②③ before pairing.

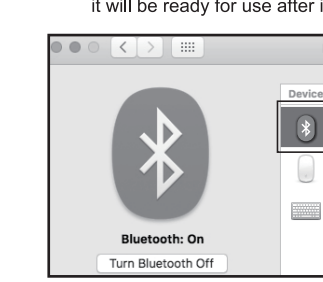
4. Click "System Preferences" on Mac.



5. Click "Bluetooth" in "System Preferences".



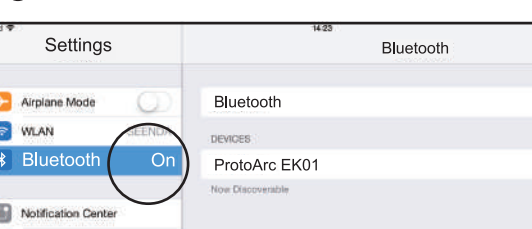
6. Your computer will automatically find "ProtoArc EK01", then click "pair", it will be ready for use after installation.



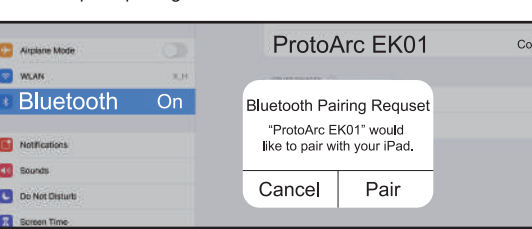
iOS

Please complete the Bluetooth connection step ①②③ before pairing.

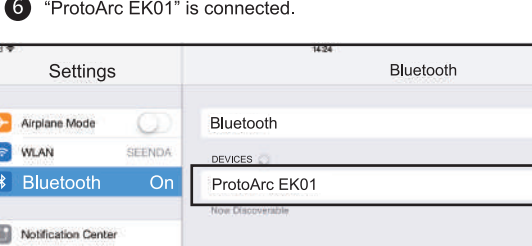
4. Click "Setting" on the device and then turn ON Bluetooth.



5. Your computer will automatically find "ProtoArc EK01", then click "pair" to complete pairing.



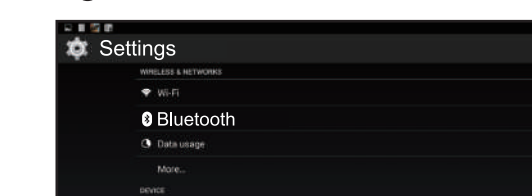
6. "ProtoArc EK01" is connected.



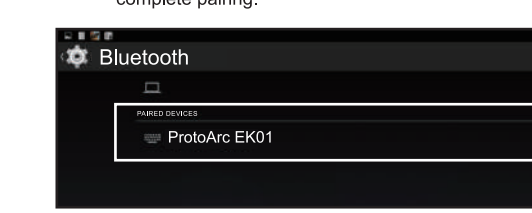
Android OS

Please complete the Bluetooth connection step ①②③ before pairing.

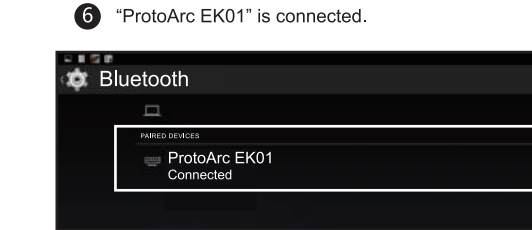
4. Click "Setting" on the device and then turn on Bluetooth.



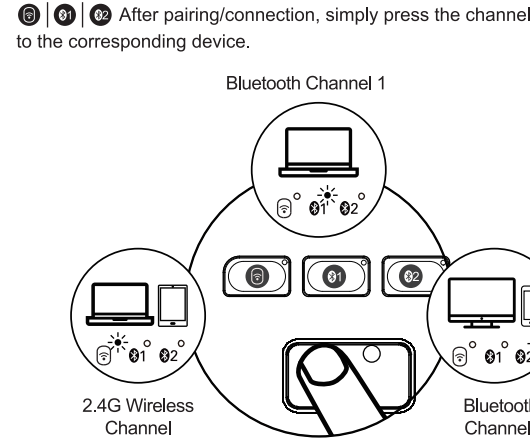
5. Your computer will automatically find "ProtoArc EK01", then click "pair" to complete pairing.



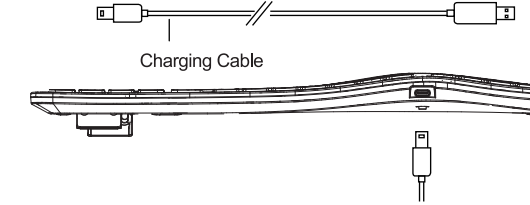
6. "ProtoArc EK01" is connected.



How to Switch Device Channels



Keyboard Charging



When the battery is low, the white indicator light on the button of the channel in use will start to flash until the device shuts down. Please charge the keyboard as soon as possible to ensure it has sufficient power for stable connection. If the battery is too low, it may cause poor connection quality, resulting in delays or other problems while using. Charge in time to avoid these problems. Power indicator light is red while charging, and will turn green when fully charged. A full charging cycle is about 2 to 3 hours.

Multimedia Function Button

Buttons	Windows	Android	iOS	MAC OS
Decrease brightness	Decrease brightness	Decrease brightness	Decrease brightness	Decrease brightness
Increase brightness	Increase brightness	Increase brightness	Increase brightness	Increase brightness
Window switching	Window switching	Window switching	/	Multi-window preview
Multi-window preview	/	/	App switching	App switching
Show desktop	/	/	/	Show desktop
Search	Search	Search	Search	Search
Select all	Select all	Select all	Select all	Select all
Copy	Copy	Copy	Copy	Copy
Cut	Cut	Cut	Cut	Cut
Home	Home	Home	Home	/
Screenshot	Screenshot	Screenshot	Screenshot	Screenshot
Lock	/	/	Lock	Lock
Volume up	Volume up	Volume up	Volume up	Volume up
Volume down	Volume down	Volume down	Volume down	Volume down
Previous	Previous	Previous	Previous	Previous
Play&Stop	Play&Stop	Play&Stop	Play&Stop	Play&Stop
Next	Next	Next	Next	Next
press FN+ESC to turn ON / OFF the FN function				

Note: The FN function is for alternate commands (F1-F12 & multimedia functions are dual-use keys).

Product Specification

Project Name	Specifications
Applicable System	2.4G: Microsoft system Bluetooth: Windows8, Windows10 or higher, Mac os X 10.12 or higher, Android4.3 or higher.
Battery Capacity	1100mAh
Sleep Mode	Go to sleep after 30 minutes of no operation
Battery Life	1000 charge and discharge cycles
Button Life	3 million keystrokes test
StandbyTime	200 h
Awake Mode	Click any key to wake up
Effective Distance	8 m / 26 ft
Working Current	≤3mA
Size	423.8 x 231.4 x 27.7mm / 16.7" x 9.1" x 1.1"

Tips

1. If keyboard fails to connect, switch the keyboard power OFF then turn it back ON, retry the Bluetooth connection procedures again. Clear the current Bluetooth connection list, remove current devices and then reconnect.

2. To switch to a already connected channel, please wait for 3 seconds after pressingthe switch device button for it to respond.

3. The keyboard has memory function, when a keyboard channel is successfully connected, that channel connection will remain connected in the default channel. The corresponding indicator light will be on.

Sleep Mode

1. When the keyboard stays idle for more than 30 minutes, it will automatically enter sleep mode and the indicator light will be off.
2. To wake the keyboard, simply press any key on the keyboard and it will be ready within 3 seconds. The indicator light will turn on again.

What's In Package

- 1* Wireless Bluetooth Keyboard
- 1* USB Receiver
- 1* Type-C Charging Cable
- 1* User Manual