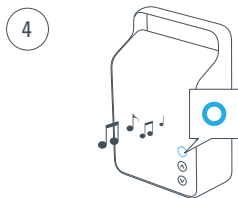
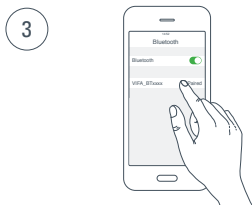
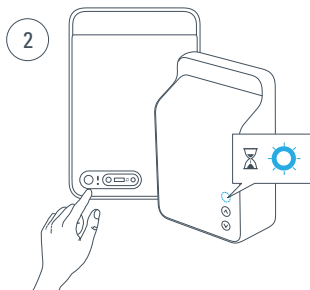
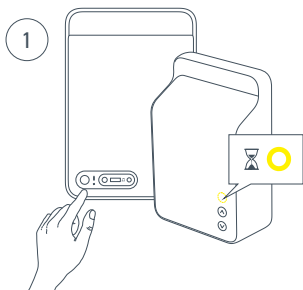
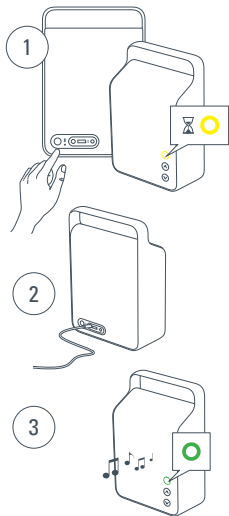


CONNECTING WITH *BLUETOOTH*



CONNEXION VIA BLUETOOTH / VERBINDUNG ÜBER BLUETOOTH / TILSLUTNING MED BLUETOOTH /
CONEXIÓN CON BLUETOOTH / YHDISTÄMINEN BLUETOOTH-YHTEYDELLÄ / CONNESSIONE CON BLUETOOTH /
BLUETOOTH로 연결 / TILKOBLING MED BLUETOOTH / ANSLUTA VIA BLUETOOTH / ПОДКЛЮЧЕНИЕ ПО BLUETOOTH / 连接蓝牙

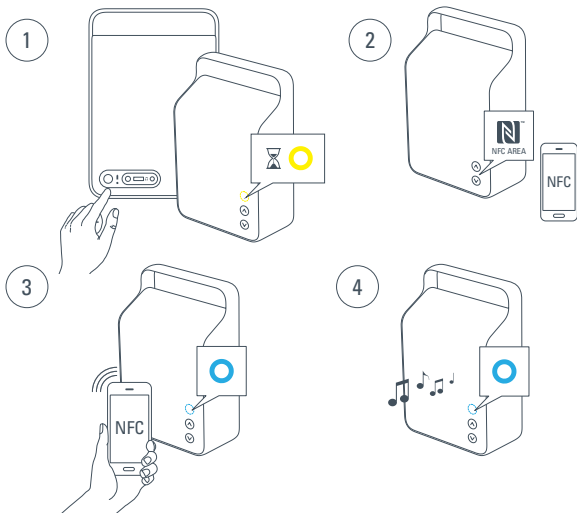
Wired connection



Connexion filaire / Kabelverbindung
Trådforbindelse / Conexión con cable
Langallinen yhteys / Connessione cablata
유선 연결 / Kabelt förbindelse
Trådbunden anslutning
ПРОВОДНОЕ ПОДКЛЮЧЕНИЕ
有线连接

Bluetooth pairing with NFC

Only for NFC enabled devices



Appariement Bluetooth avec NFC, Seulement pour les appareils compatibles NFC / Bluetooth-Kopplung mit NFC,
Nur für NFC-fähige Geräte / Bluetooth-parring med NFC, Kun for NFC-aktiverede enheder / Asociación Bluetooth con
NFC, Solo para dispositivos habilitados para NFC / Bluetooth-parinmuodustus NFC:n avulla, Vain NFC-yhteensopivat
laitteet / Abbinamento Bluetooth con NFC, Solo per dispositivi abilitati NFC / NFC Bluetooth 페어링, NFC 사용 가
능 기기에서만 사용 / Bluetooth-paring med NFC, Kun for NFC-aktiverede enheter / Bluetooth parkoppling med NFC,
Endast för NFC-aktiverade enheter / ПОДКЛЮЧЕНИЕ ПО BLUETOOTH - NFC, Только для устройств с поддержкой NFC /
NFC 蓝牙配对, 仅适用于支持 NFC 的设备