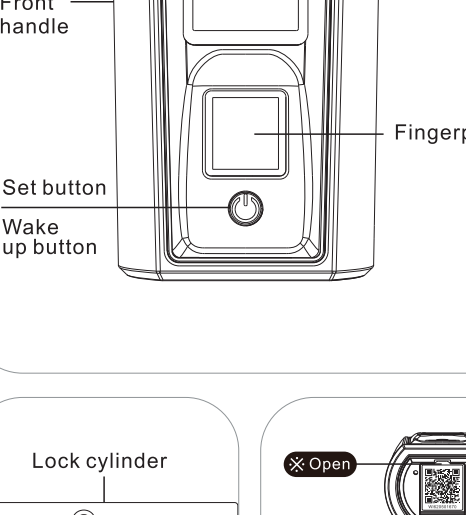


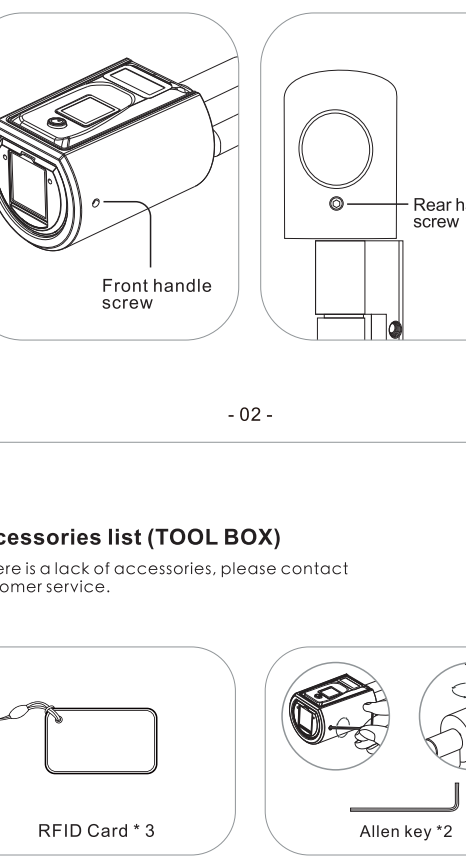
Catalogue

- Applicable size01
- Product components02
- Accessories list (TOOL BOX)03
- Install battery
- Adjust the length of the cylinder.....04
- Installation pictures/video
- Unresetting diagram
- Setting operation05
- Unlock and lock07
- Bluetooth activation and login instructions08
- Select "Android/iOS" to download
- Log in to the app
- Bind the device09
- Specifications10
- FAQ

Applicable size

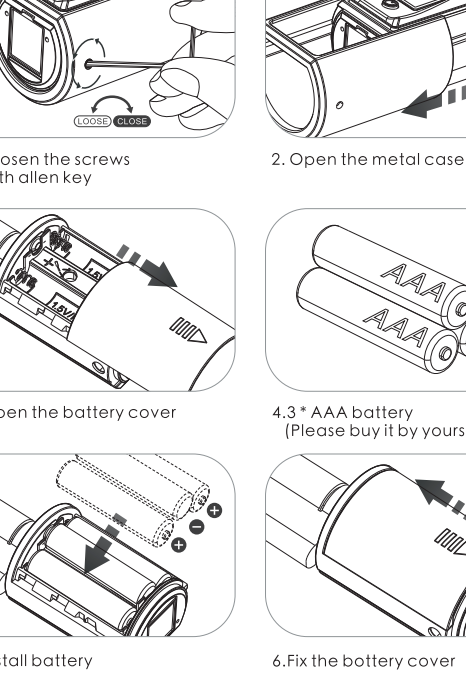


Product Components

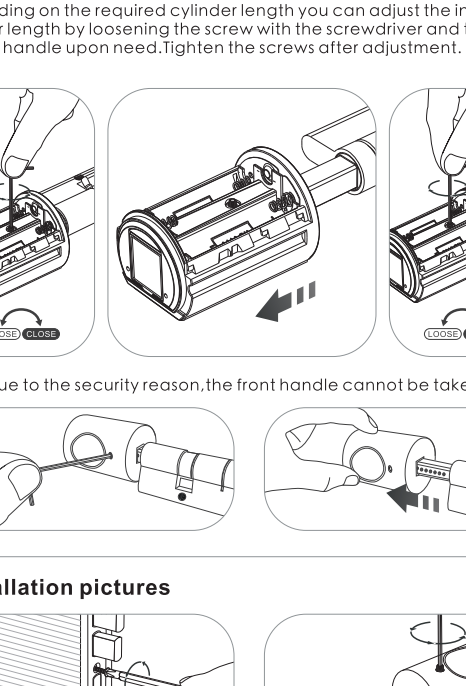


Accessories list (TOOL BOX)

If there is a lack of accessories, please contact customer service.

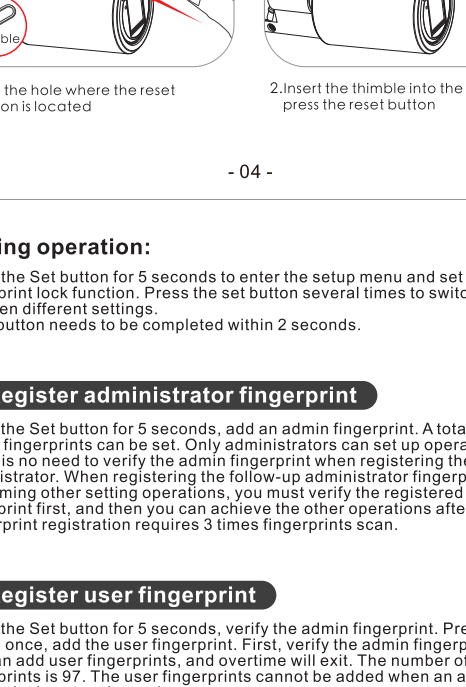


Install battery



Adjust the length of the cylinder

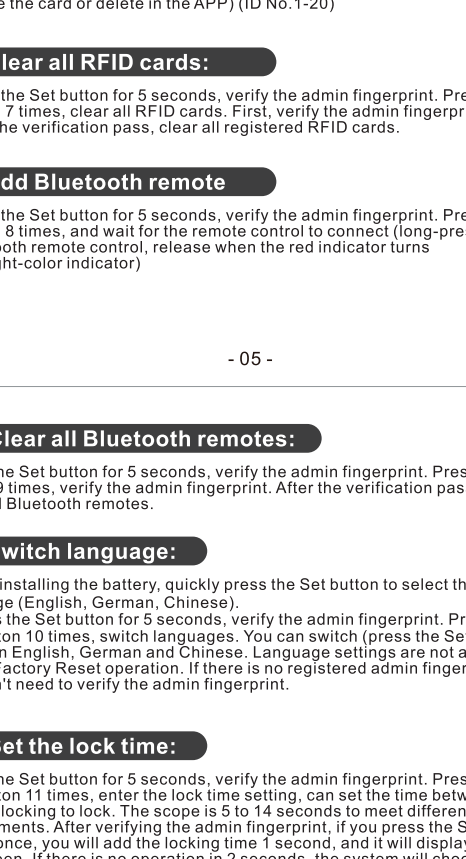
Depending on the required cylinder length you can adjust the interior and exterior length by loosening the screw with the screwdriver and then pulling out the handle upon need. Tighten the screws after adjustment.



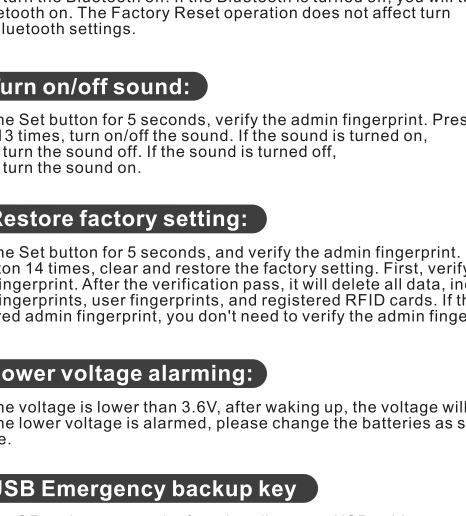
⚠ Due to the security reason, the front handle cannot be taken off.



Installation pictures



Unresetting diagram



Setting operation:

Press the Set button for 5 seconds to enter the setup menu and set the fingerprint lock function. Press the set button several times to switch between different settings. Each button needs to be completed within 2 seconds.

1. Register administrator fingerprint

Press the Set button for 5 seconds, add an admin fingerprint. A total of 3 admin fingerprints can be set. Only administrators can set up operations. There is no need to verify the admin fingerprint when registering the first administrator. When registering the follow-up administrator fingerprint and performing other setting operations, you must verify the registered administrator fingerprint first, and then you can achieve other operations afterward. Fingerprint registration requires 3 times fingerprints scan.

2. Register user fingerprint

Press the Set button for 5 seconds, verify the admin fingerprint. Press the Set button once, add the user fingerprint. First, verify the admin fingerprint, then you can add user fingerprints, and overtime will exit. The number of user fingerprints is 97. The user fingerprints cannot be added when an admin fingerprint is not registered.

3. Delete user fingerprint:

Press the Set button for 5 seconds, verify the admin fingerprint. Press the Set button twice, delete a single user fingerprint. First, verify the admin fingerprint. After registering a fingerprint or RF ID card, need a registered fingerprint or RFID card to unlock. After verifying the fingerprint and RFID card successfully, the display screen will display the user ID No. The unlock time is 5 to 14 seconds, and then the lock will lock automatically.

4. Clear admin fingerprint:

Press the Set button for 5 seconds, verify the admin fingerprint. Press the Set button 3 times, delete all admin fingerprints. First, verify the admin fingerprint, after the verification pass, the system will delete all admin fingerprints.

5. Clear user fingerprint:

Press the Set button for 5 seconds, verify the admin fingerprint. Press the Set button 4 times, clear all user fingerprints. First, verify the admin fingerprint, after the verification pass, the system will delete all user fingerprints. (ID No.4-100)

6. Add RFID card:

Press the Set button for 5 seconds, verify the admin fingerprint. Press the Set button 11 times, enter the lock time setting, can set the time between after unlocking to lock. The scope is 5 to 14 seconds to meet different requirements. After verifying the admin fingerprint, if you press the Set button once, you will add the locking time 1 second, and it will display on the screen. If there is no operation in 2 seconds, the system will choose the default locking time. The factory setting is 10 seconds. If there is no registered admin fingerprint, you don't need to verify the admin fingerprint.

7. Delete RFID card:

Press the Set button for 5 seconds, verify the admin fingerprint. Press the Set button 12 times, delete the RFID card. First, verify the admin fingerprint. After the verification pass, select to delete a registered RFID card. (Swipe the card or delete in the APP) (ID No.1-20)

8. Clear all RFID cards:

Press the Set button for 5 seconds, verify the admin fingerprint. Press the Set button 7 times, clear all RFID cards. First, verify the admin fingerprint. After the verification pass, clear all registered RFID cards.

9. Add Bluetooth remote

Press the Set button for 5 seconds, verify the admin fingerprint. Press the Set button 8 times, and wait for the remote control to connect (long-press the Bluetooth remote control, release when the red indicator turns to a light-color indicator)

10. Clear all Bluetooth remotes:

Press the Set button for 5 seconds, verify the admin fingerprint. Press the Set button 9 times, verify the admin fingerprint. After the verification pass, clear all Bluetooth remotes.

11. Switch language:

After reinstalling the battery, quickly press the Set button to select the language (English, German, Chinese). Press the Set button for 5 seconds, verify the admin fingerprint. Press the Set button 10 times, switch languages. You can switch (press the Set button) between English, German and Chinese. Language settings are not affected by the Factory Reset operation. If there is no registered admin fingerprint, you don't need to verify the admin fingerprint.

12. Set the lock time:

Press the Set button for 5 seconds, verify the admin fingerprint. Press the Set button 11 times, enter the lock time setting, can set the time between after unlocking to lock. The scope is 5 to 14 seconds to meet different requirements. After verifying the admin fingerprint, if you press the Set button once, you will add the locking time 1 second, and it will display on the screen. If there is no operation in 2 seconds, the system will choose the default locking time. The factory setting is 10 seconds. If there is no registered admin fingerprint, you don't need to verify the admin fingerprint.

13. Turn on/off Bluetooth:

Press the Set button for 5 seconds, and verify the admin fingerprint. Press the Set button 12 times, turn on/off Bluetooth. If the Bluetooth is turned on, you will turn the Bluetooth off. If the Bluetooth is turned off, you will turn the Bluetooth on. The Factory Reset operation does not affect turn on/off Bluetooth settings.

14. Turn on/off sound:

Press the Set button for 5 seconds, verify the admin fingerprint. Press the Set button 13 times, turn on/off the sound. If the sound is turned on, you will turn the sound off. If the sound is turned off, you will turn the sound on.

15. Restore factory setting:

Press the Set button for 5 seconds, verify the factory setting. Press the Set button 14 times, clear and restore the factory setting. First, verify the admin fingerprint. After the verification pass, it will delete all data, including admin fingerprints, user fingerprints, and registered RFID cards. If there is no registered admin fingerprint, you don't need to verify the admin fingerprint.

16. Lower voltage alarming:

When the voltage is lower than 3.6V, after waking up, the voltage will alarm; When the lower voltage is alarmed, please change the batteries as soon as possible.

17. USB Emergency backup key

Open the QR code cover on the front handle, use a USB cable to connect it to the USB socket and a mobile power supply, then use the App to unlock it automatically.

The operation of opening the lock:

Wake up: the system will be in a dormant state usually. If you need to verify the fingerprint or swipe card, need to press the wake-up button in a short time to wake up the system first. Then, verify the fingerprint or swipe card. Press the wake-up button in 5 seconds to enter the setting menu. Before registering any fingerprints, any fingerprints and RFID cards can unlock the lock. After registering a fingerprint or RF ID card, need a registered fingerprint or RFID card to unlock. After verifying the fingerprint and RFID card successfully, the display screen will display the user ID No. The unlock time is 5 to 14 seconds, and then the lock will lock automatically.

Unlock and lock

Unlock the door from outside

The knob can be rotated 360 degree freely after locked. To protect the lock not be damaged by torsion forcefully.

Low battery prompt:

After waking up, the screen displays:

After 3 "beep beep beep" beeps. The screen prompts: "Battery Low". Please replace the battery promptly when the above message appears.

Scan the QR code on the lock

Downloadable Instructions & Watch Videos

A smart way to open your door WE.LOCK

www.WELOCK.com

Bluetooth activation and login instructions

Scan the QR code on the lock

Select "Android/iOS" to download

Log in to the app

- ① Select your country/region
- ② Enter the phone number/email to get the verification code
- ③ Click "Send"
- ④ Enter the verification code after receiving the message
- ⑤ Click "Login"

Bind the device

1. Device list
2. Select device
3. Confirm device
4. Bind device
5. Bind success

Specifications

Brand	WE.LOCK
Applicable door types	Wooden doors, Interior doors
Adjustable range	50-100 mm
Operating Temperature	-25℃ - 60℃
Pressing Cycle Times	100,000 Times
Material of handle	Zinc Alloy
Way to unlock	Fingerprint / RFID card / Bluetooth
Battery Type	3 * AAA Battery
Power input	3.6V-4.5V
Battery Replacement	Replaceable
Color	Silver/Black
Battery Life	10-12 months

FAQ

- **How can I know the lock is out of power?**
Each time you use it, a screen above the fingerprint device shows the power. APP will prompt low battery and send text messages to the phone.
- **Does the lock knob still works after I replaced the lock?**
It still works. It only replaces the cylinder. It won't affect the other functions of the original lock.
- **Will it read slowly or fail to recognize the fingerprint when long time using?**
It won't. The fingerprint sensor has a particular protection film on it.
- **Is it complicated to set?**
It's easy. Use the thimble to press the set button to register the fingerprint. The screen will show you the functions for choosing, and you just need to press your fingerprint.
- **If we install all the houses' doors with We. Lock, can we use the phone APP to unlock all of it?**
Yes, you can. One phone can be in charge of many different locks. Just remember to mark the name of each lock.
- **Online Service:**
Email: service@welockglobal.com