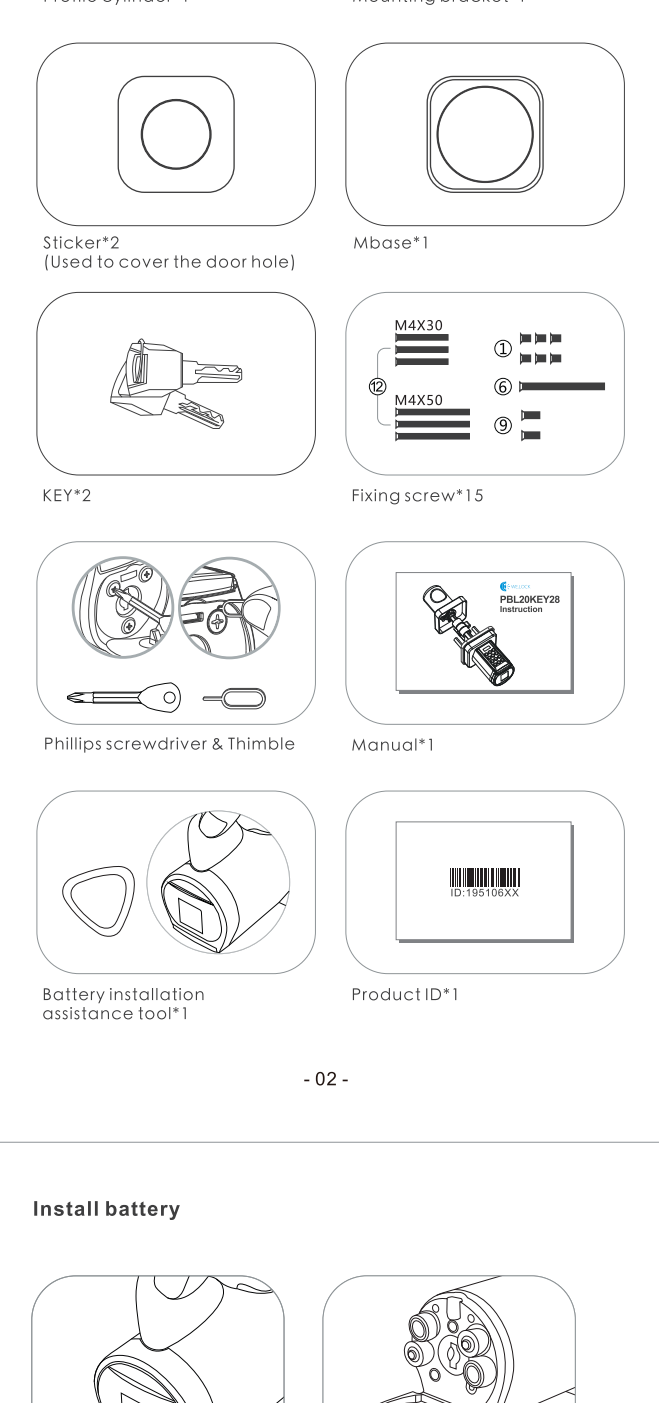


Catalogue

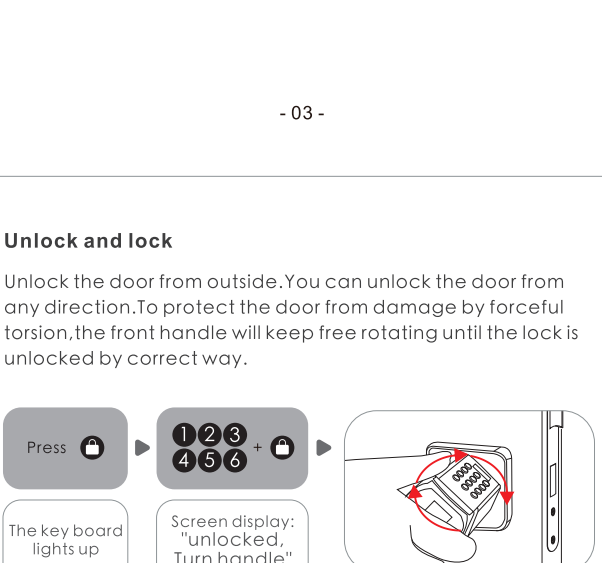
- Part list figure01
- Accessory list(TOOL BOX)02
- Install battery03
- Operating instruction
- Unlock and lock04
- Uresetting diagram
- Installation diagram05
- 1. Language:Flow chart06
- 2.Passcode:Flow chart07
- 3.Other settings:Flow chart08
- Applicable size08
- Product Introctio
- Bluetooth activation and login instructions09
- Log in to the app
- Bind the device10
- Specifications11
- FAQ



- PART LIST FIGURE**
- 1 Screws for battery compartment
 - 2 Front Handle
 - 3 Front Panel
 - 4 Screw casing
 - 5 Profile cylinder
 - 6 Scerws for profile cylinder
 - 7 Toggle lever
 - 8 Rear Panel
 - 9 Scerws for rear Panel
 - 10 Rear handle
 - 11 Mounting bracket
 - 12 Mounting bracket screw
 - 13 Mbase
 - 14 Product ID

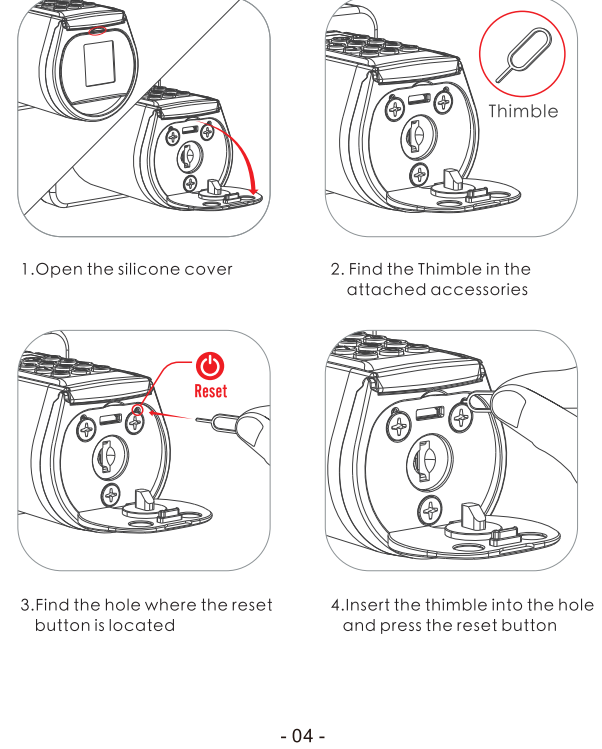
- 01 -

Accessory list(TOOL BOX)



- 02 -

Install battery



- 03 -

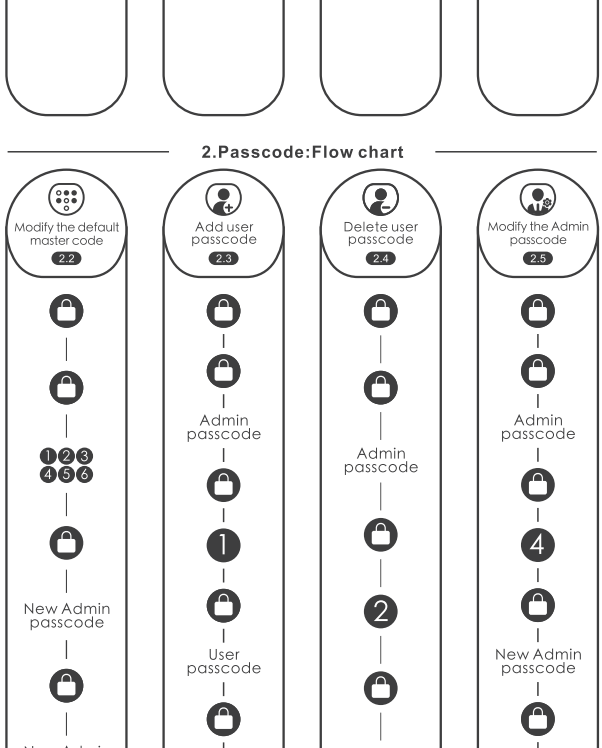
Operating instruction

- If enter wrong passcode 5 times continuously, the system will be locked for three minutes and cannot operate.
- Press **0** to wake up the keyboard+10 digits temporary passcode.Enter wrong passcode 5 times continuously, the system will be locked for three minutes and can not operate. Temporary passcode generation needs to be done in the App. The time on the screen should be same as the time on the phone,otherwise the temporarypasscode will be invalid.
- Bind the lock on APP
Bind the lock on APP via Bluetooth,click"unlock",then the phone time will be synchronized to the lock via Bluetooth.

- 03 -

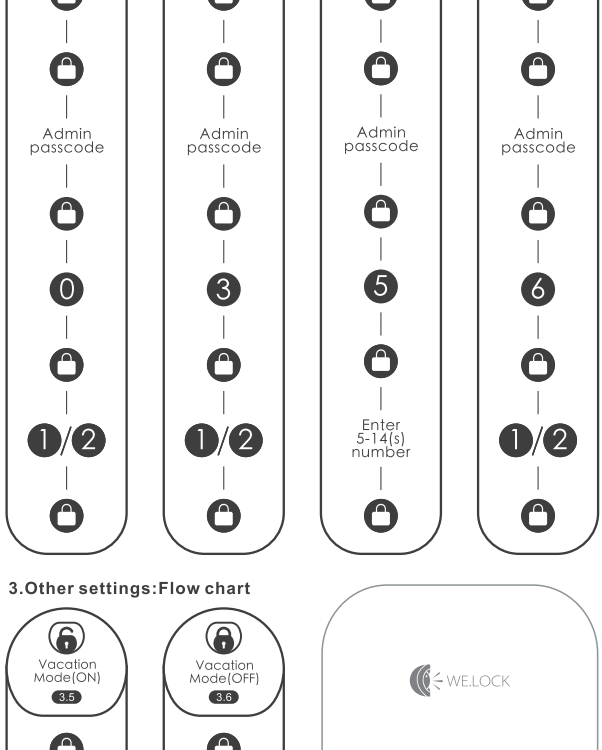
Unlock and lock

Unlock the door from outside.You can unlock the door from any direction.To protect the door from damage by forceful torsion,the front handle will keep free rotating until the lock is unlocked by correct way.



The rear handle can always unlock the lock from clockwise or conter-clockwise direction.

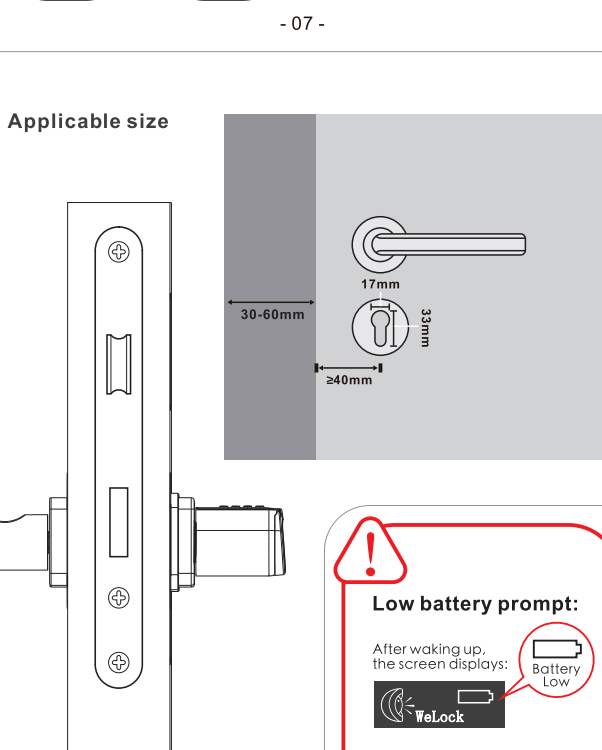
Resetting diagram



- 04 -

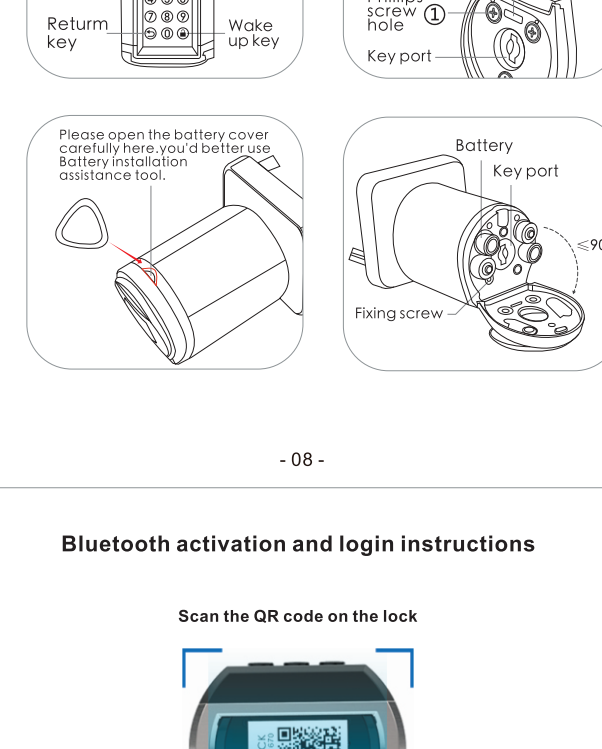
Installation diagram

2.1 Picture of installation Inward opening door:
The inclined surface of the bolt face outwards when installing.

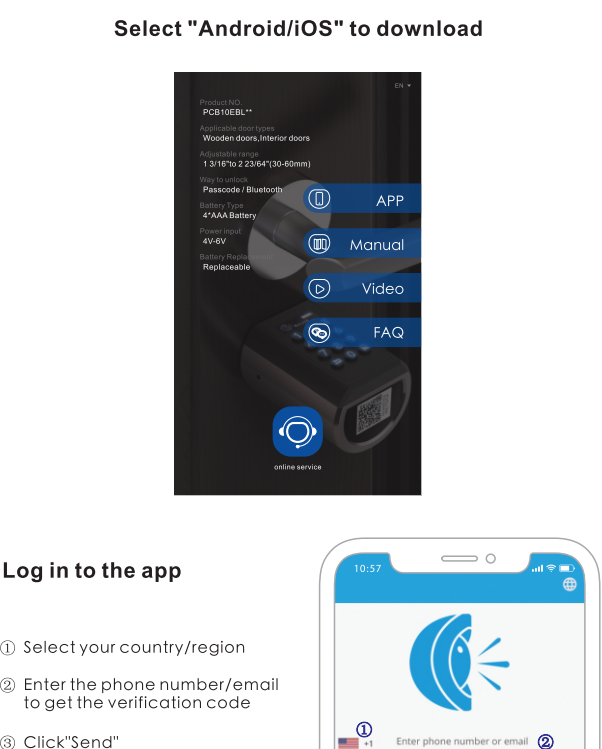


- 05 -

1. Language:Flow chart



2.Passcode:Flow chart

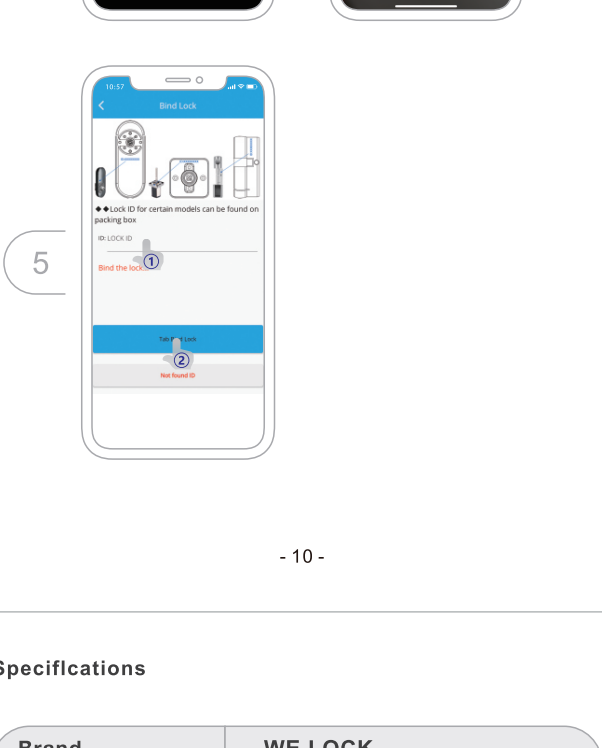


- 06 -

3.Other settings:Flow chart

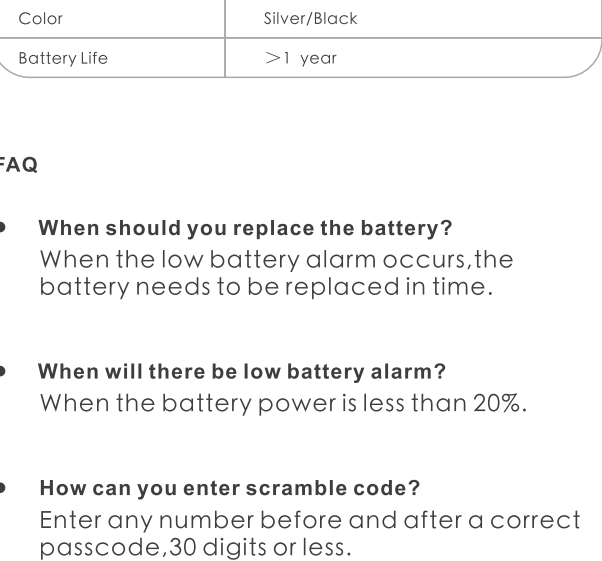


3.Other settings:Flow chart



- 07 -

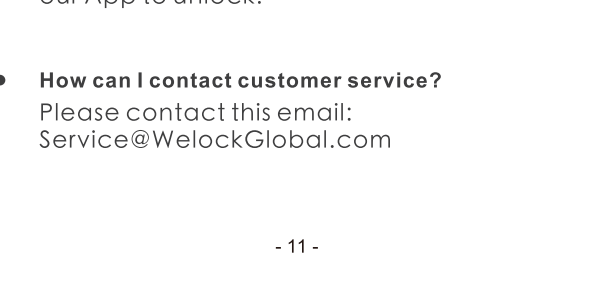
Applicable size



Low battery prompt:
After waking up, the screen displays:

After 3 "beep beep beep"beeps, the screen prompts:"Battery Low".
Battery Low
Please replace the battery promptly when the above message appear.

Product Introduction



- 08 -

Bluetooth activation and login instructions

Select "Android/iOS" to download

- 09 -

Bind the device

- 10 -

Specifications

Brand	WE.LOCK
Applicable door types	Wooden doors,Interior doors
Adjustable range	1 3/16"to 2 23/64"(30-60mm)
Operating Temperature	-25℃~60℃
Pressing Cycle Times	100,000 Times
Material of handle	Zinc Alloy
Way to unlock	Passcode / Bluetooth
Battery Type	4*AAA Battery
Power input	4V~6V
Battery Replacement	Replaceable
Color	Silver/Black
Battery Life	>1 year

FAQ

- When should you replace the battery?**
When the low battery alarm occurs,the battery needs to be replaced in time.
- When will there be low battery alarm?**
When the battery power is less than 20%.
- How can you enter scramble code?**
Enter any number before and after a correct passcode,30 digits or less.
- How can you unlock the lock when the battery runs out?**
You can use a mobile power supply to power the lock via a micro USB cable,and then use our App to unlock.
- How can I contact customer service?**
Please contact this email:
Service@WelockGlobal.com

- 11 -