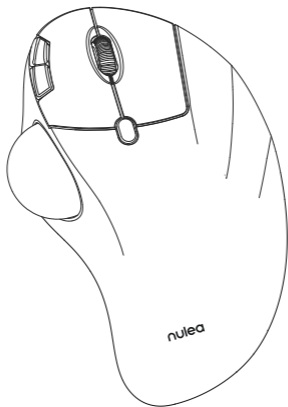


nulea®

M507B

Wireless Trackball Mouse

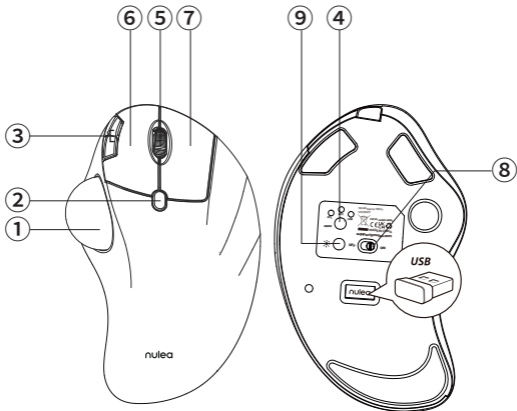


User Manual

For more detailed technical support, please contact:

support@nulea.com

www.nulea.com



Product Function

- | | | |
|-----------------------|----------------|----------------|
| ① Removable Ball | ⑤ Scroll Wheel | ⑨ Light Switch |
| ② DPI Swith Key | ⑥ Left Key | |
| ③ Back/Forward Button | ⑦ Right Key | |
| ④ Mode Switch | ⑧ ON/OFF | |

DE

Produkt Funktion

- ① Abnehmbare Kugel
- ② DPI-Umschalttaste
- ③ Zurück/Vorwärts-Taste
- ④ Modus-Schalter
- ⑤ Scrollrad
- ⑥ Linke Taste
- ⑦ Rechte Taste
- ⑧ ON/OFF
- ⑨ Licht-Schalter

FR

Fonction du produit

- ① Boule amovible
- ② Touche DPI Swicth
- ③ Bouton Back/Forward
- ④ Commutateur de mode
- ⑤ Molette de défilement
- ⑥ Touche gauche
- ⑦ Touche droite
- ⑧ ON/OFF
- ⑨ Interrupteur de lumière

IT

Funzione del prodotto

- ① Palla rimovibile
- ② Tasto DPI
- ③ Tasto avanti/indietro
- ④ Interruttore di modalità
- ⑤ Rotella di scorrimento
- ⑥ Tasto sinistro
- ⑦ Tasto destro
- ⑧ ON/OFF
- ⑨ Interruttore luce

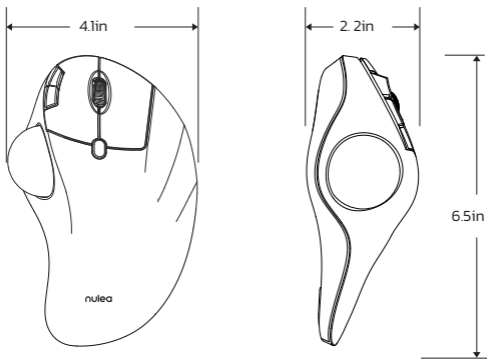
ES

Función del producto

- ① Bola extraíble
- ② Tecla DPI Swicth
- ③ Botón de avance/retroceso
- ④ Interruptor de modo
- ⑤ Rueda de desplazamiento
- ⑥ Tecla izquierda
- ⑦ Tecla derecha
- ⑧ ON/OFF
- ⑨ Interruptor de luz

US/UK/CA

Basic Parameters



Interface	2.4G/Bluetooth
DPI	200 - 400(Default) - 800 - 1200 -1600
Size	4.1 * 6.5 * 2.2in
Weight	177.6g
Transmission distance	10m
Power Rating	DC 5V---0.3A
Report Rate	250HZ (2.4G) / 115HZ (Bluetooth)

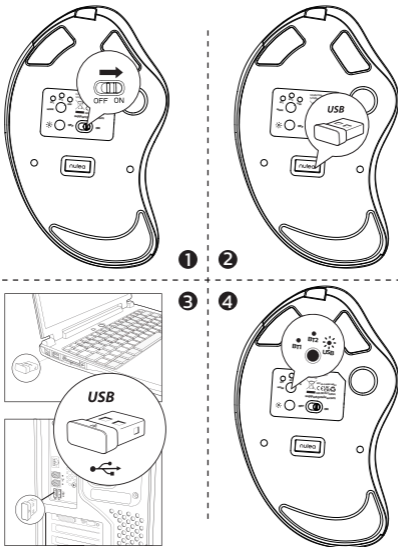
Package Content

1* Wireless Trackball Mouse

1* USB-C Cable

1* User Manual

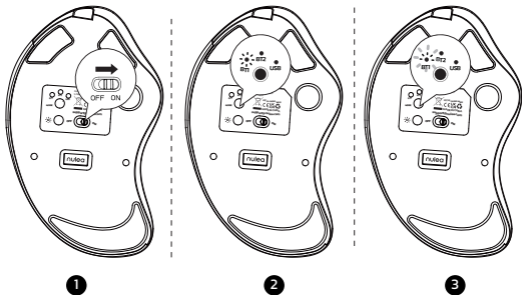
2.4G Connection



- 1 Turn on the mouse.
- 2 Take out the 2.4G receiver at the bottom of the mouse.
- 3 Plug the 2.4G receiver into the USB port of your computer.
- 4 Press the channel switch button to switch to 2.4G mode. When LED lights up for 5 seconds and then goes out, the pairing is successful.

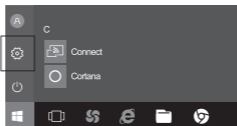
Bluetooth Connection

Windows System(Take Windows 10 as an example)



- 1 Turn on the mouse.
- 2 Press the channel switch button to switch to Bluetooth mode.
- 3 Long press the switch button for 3-5 seconds, the LED light flashes rapidly and the mouse enters Bluetooth pairing mode.

- 4 Click the "Bluetooth devices" button on the computer.



- 5 Click the "Add or remove Bluetooth devices" button.



- 6 Search the Bluetooth "BT5.0 Mouse / BT3.0 Mouse", and click the pairing button.



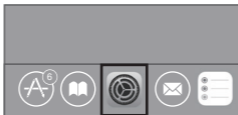
- 7 If the pairing is successful, the LED lights up for 5 seconds and then goes out.



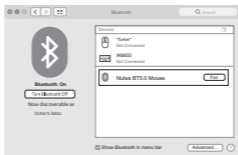
Mac OS System

Please operate the Bluetooth installation steps(1-3) before pairing.

- 1 Click the "System Preferences" button on the Mac.



- 2 Click the Bluetooth button on the system preference folder.



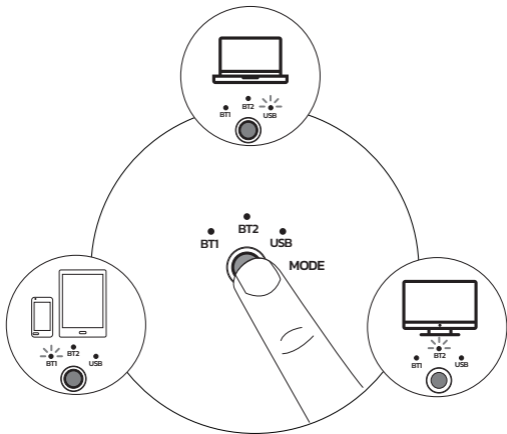
- 3 Search the Bluetooth "BT5.0 Mouse / BT3.0 Mouse", and click the Pairing button.
If installed completely, the mouse could be used normally.



Mode Switch

When 2.4G and Bluetooth are successfully matched to the device respectively, you can use the switch button at the bottom of the mouse to switch to the corresponding device.

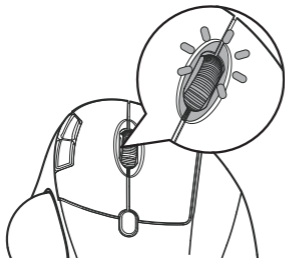
2.4G Mode LED on



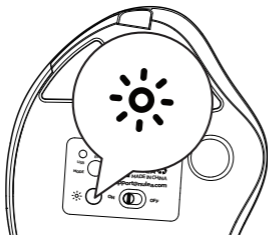
Bluetooth 1 Mode LED on

Bluetooth 2 Mode LED on

Light Indication



- DPI Switching: blue light
- Charging: red light
- Fully Charged: green light
- Low Battery: blue light



- Press the button to switch the light mode

Charging

1. Low battery indicator glows blue, in order not to affect the experience and function of the mouse, please charge in time.
2. The charging indicator will glow red while the mouse is charging. The indicator light turns green when fully charged.
3. The voltage is below 3.3V, and the low-voltage indicator flashes 10 times at a rate of 1 time per second.

DPI Mode

Press the DPI key, and the blue light flashes once/twice/three times/four times /five times, corresponding to DPI 200-400-800-1200-1600.

Sleep Mode

1. To save power, the mouse will enter sleep mode after 30 minutes of inactivity, press any key to exit sleep mode.
2. When the mouse is normally connected to the receiver, the light will be off when the mouse is not in use for 30 seconds, and the light will wake up when the mouse is awakened.

Light Mode

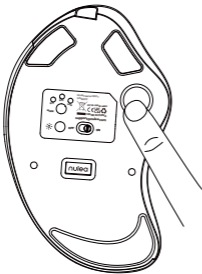
Press the light button to switch in turn: flow-breathing-solid light on-wave-light off.

FAQ1

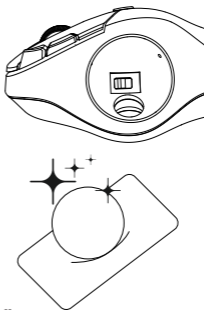
What can you do when the trackball and cursor cannot work well?

Push the trackball from the bottom of the mouse. Use a dry cloth to clean the trackball regularly for better performance.

Take out the trackball



Clean the trackball & sensor



FAQ2

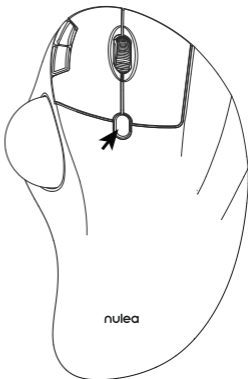
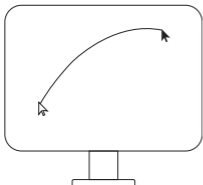
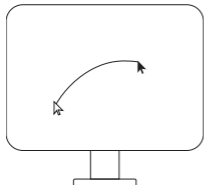
Note the mouse charging problem.

1. Please use our included charging cable to charge the mouse.
2. Do not use a fast charger to charge the mouse. Using a high-power adapter to charge the mouse may burn out the mouse's chip. (Directly use the computer USB port or a 5V charger to charge the mouse).
3. For your best experience, please fully charge the mouse before your first use.

FAQ3

Why is the cursor too sensitive to control?

There are 5 DPI levels: 200-400(Default)-800-1200-1600. Press the DPI button to adjust for your preference.



FAQ4

Don't get used to using trackball mouse.

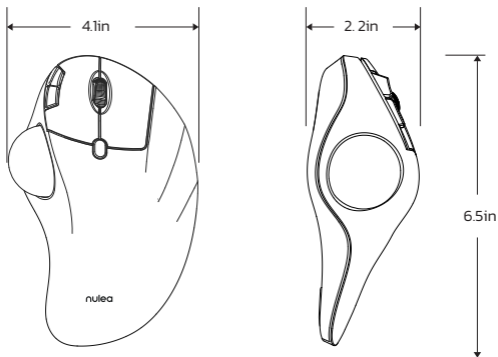
The trackball mouse helps relieve wrist discomfort when working. The special operation of the mouse may make you feel uncomfortable at first. Once you get command of using it, you will get its benefits and fall in love with it.

FAQ5

How to reprogram mouse buttons?

1. All keys are not programmable.
2. Forward/Backward buttons are not compatible with MAC OS.

Grundlegende Parameter



Schnittstelle	2.4G/Bluetooth
DPI	200 - 400(Standard) - 800 - 1200 -1600
Größe	4.1 * 6.5 * 2.2in
Gewicht	177.6g
Übertragungsentfernung	10m
Nennleistung	DC 5V===0.3A
Bericht Rate	250HZ (2.4G) / 115HZ (Bluetooth)

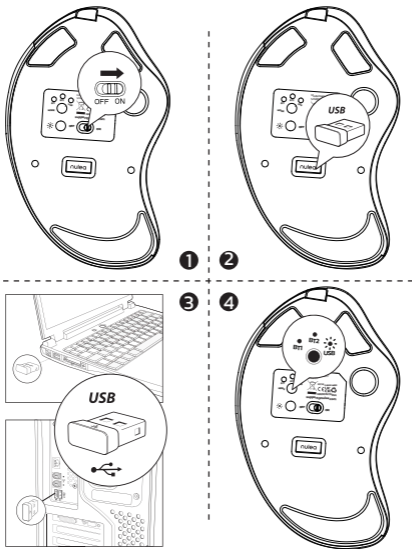
Paket Inhalt

1* Kabellose Trackball-Maus

1* USB-C Kabel

1* Benutzerhandbuch

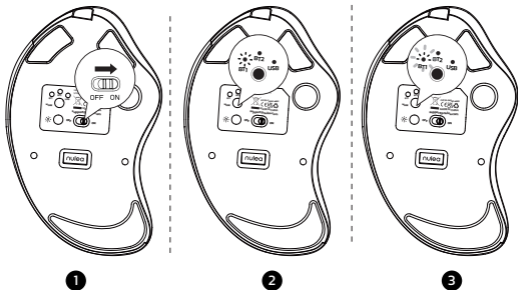
2.4G Verbindung



- 1 Schalten Sie die Maus ein.
- 2 Nehmen Sie den 2,4 -g -Empfänger am Boden der Maus heraus.
- 3 Stecken Sie den 2.4G -Empfänger in den USB -Anschluss Ihres Computers.
- 4 Drücken Sie die Kanalschaltertaste, um in den 2,4G -Modus zu wechseln. Wenn LED 5 Sekunden lang aufleuchtet und dann ausgeht, ist die Paarung erfolgreich.

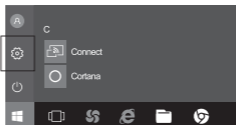
Bluetooth-Verbindung

Windows-System(Windows 10 als Beispiel nehmen)



- 1 Schalten Sie die Maus ein.
- 2 Drücken Sie die Kanalumschalttaste, um in den Bluetooth-Modus zu wechseln.
- 3 Drücken Sie die Schaltertaste für 3-5 Sekunden lang, das LED-Licht blinkt Schnell und die Maus in den Bluetooth -Pairing -Modus eintreten.

- 4 Klicken Sie auf die Schaltfläche "Bluetooth-Geräte" auf dem Computer.



- 5 Klicken Sie auf die Schaltfläche "Bluetooth -Geräte hinzufügen oder entfernen".



- 6 Suchen Sie die Bluetooth "BT5.0 Mouse / BT3.0 Mouse" und klicken Sie auf die Pairing -Taste.



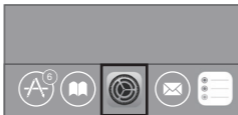
- 7 Wenn die Paarung erfolgreich ist, leuchtet die LED 5 Sekunden lang auf und geht dann aus.



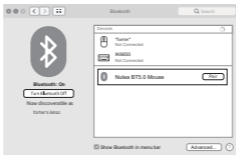
Mac OS-System

Bitte betreiben Sie die Bluetooth –Installationschritte (1 ~ 3) vor dem Paarung.

- 1 Klicken Sie auf dem Mac auf die Schaltfläche „Systemeinstellungen“.



- 2 Klicken Sie auf die Bluetooth –Taste im Systempräferenzordner.



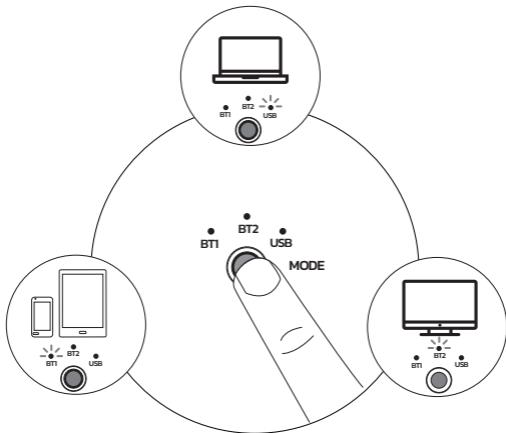
- 3 Suchen Sie die Bluetooth "BT5.0 Mouse / BT3.0 Mouse" und klicken Sie auf die Pairing –Taste. Wenn sie vollständig installiert ist, kann die Maus normal verwendet werden.



Modus-Schalter

Wenn 2.4G und Bluetooth erfolgreich mit dem Gerät übereinstimmen, können Sie die Schalttaste am unteren Rand der Maus verwenden, um zum entsprechenden Gerät zu wechseln.

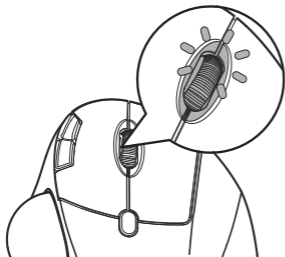
2.4G Mode LED on



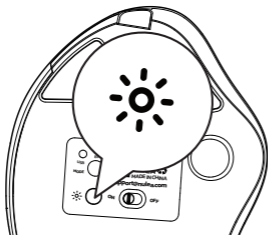
Bluetooth 1 Mode LED on

Bluetooth 2 Mode LED on

Licht-Anzeige



- DPI-Umschaltung: blaues Licht
- Aufladen: rotes Licht
- Vollständig aufgeladen: grünes Licht
- Niedriger Batteriestand: blaues Licht



- Drücken Sie die Taste, um den Lichtmodus zu wechseln

Ladung

1. Niedrige Batterieanzeige leuchtet blau, um die Erfahrung nicht zu beeinflussen und Funktion der Maus, bitte rechtzeitig aufladen.
2. Der Ladeindikator leuchtet rot, während die Maus aufgeladen wird. Das Indikatorlicht wird bei voll aufgeladenen Grün grün.

DPI-Modus

Drücken Sie die DPI-Taste, und das blaue Licht blinkt einmal/zweimal/drei mal/vier mal/fünf mal, entsprechend DPI 200-400-800-1200-1600.

Schlafmodus

1. Um Strom zu sparen, tritt die Maus nach 30 Minuten in den Schlafmodus ein. Inaktivität, drücken Sie eine beliebige Taste, um den Schlafmodus zu verlassen.

2. Wenn die Maus normal an den Empfänger angeschlossen ist, wird das Licht ausgeschaltet, wenn die Maus 30 Sekunden lang nicht benutzt wird, und das Licht wird aktiviert, wenn die Maus aufgeweckt wird.

Lichtmodus

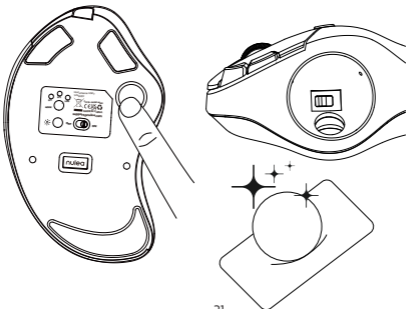
Drücken Sie die Lichtknopf, um sich nacheinander zu wechseln: Strömung-Atmung-Festkörper Licht ein-Welle-Licht aus.

FAQ1

Was können Sie tun, wenn der Trackball und der Cursor nicht gut funktionieren können?

Drücken Sie den Trackball vom Boden der Maus. Verwenden Sie ein trockenes Tuch, um den Trackball regelmäßig für eine bessere Leistung zu reinigen.

Nehmen Sie den Trackball heraus Reinigen Sie den Trackball & Sensor



FAQ2

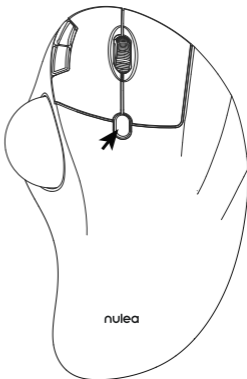
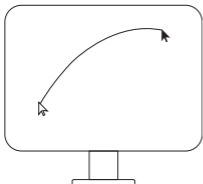
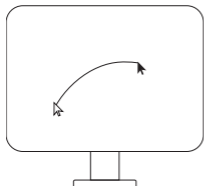
Beachten Sie das Problem der Maus -Ladung.

1. Bitte verwenden Sie unser mitgeliefertes Ladekabel, um die Maus aufzuladen.
2. Verwenden Sie kein schnelles Ladegerät, um die Maus aufzuladen. Die Verwendung eines Hochleistungsadapters zum Laden der Maus kann den Chip der Maus ausbrennen. (Verwenden Sie direkt den USB -Anschluss oder ein 5 -V -Ladegerät, um die Maus aufzuladen).
3. Für Ihre beste Erfahrung berechnen Sie die Maus vor Ihrer ersten Verwendung vollständig.use.

FAQ3

Warum ist der Cursor zu empfindlich gegenüber der Kontrolle?

Es gibt 5 DPI-Werte: 200-400 (Standard) -800-1200-1600. Drücken Sie die DPI -Taste, um Ihre Präferenz anzupassen.



FAQ4

Gewöhnen Sie sich nicht an die Verwendung von Trackball -Maus.

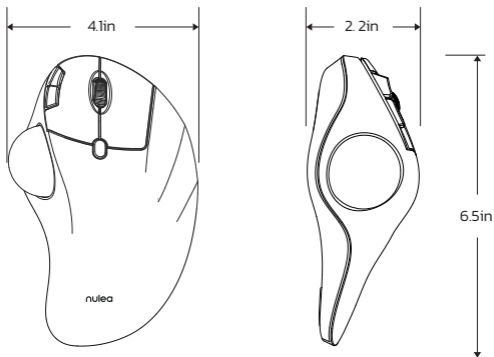
Die Trackball -Maus lindert das Handgelenksbeschwerden bei der Arbeit. Der besondere Betrieb der Maus kann sich zunächst unwohl fühlen. Sobald Sie den Befehl über die Verwendung erhalten haben, erhalten Sie seine Vorteile und verlieben sich in sie.

FAQ5

Wie programmiere ich Maustasten neu?

1. Alle Schlüssel sind nicht programmierbar.
2. Vorwärts-/Rückwärtsschaltflächen sind nicht mit Mac OS kompatibel.

Paramètres de base



Interface	2.4G/Bluetooth
DPI	200 - 400(Défaut) - 800 - 1200 -1600
Taille	4.1 * 6.5 * 2.2in
Poids	177.6g
Distance de transmission	10m
Puissance nominale	DC 5V---0.3A
Taux de rapport	250HZ (2.4G) / 115HZ (Bluetooth)

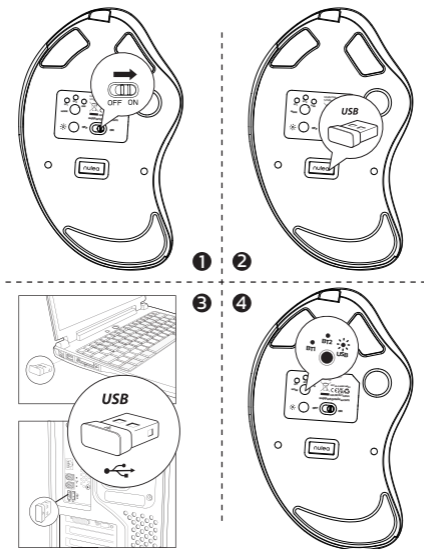
Contenu du paquet

1* Souris sans fil à boule de commande

1* Câble USB-C

1* Manuel de l'utilisateur

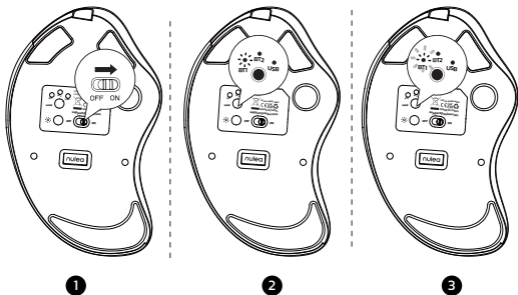
Connexion 2.4G



- 1 allume la souris.
- 2 Sortez le récepteur 2.4g au bas de la souris.
- 3 Branchez le récepteur 2.4g dans le port USB de votre ordinateur.
- 4 Appuyez sur le bouton du commutateur de canal pour basculer en mode 2.4g. Lorsque la LED s'allume pendant 5 secondes, puis s'éteint, le couple réussit.

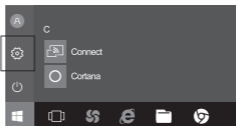
Connexion Bluetooth

Systeme Windows (prenez Windows 10 comme exemple)



- 1 Allumez la souris.
- 2 Appuyez sur le bouton du commutateur de canal pour passer en mode Bluetooth.
- 3 Appuyez longtemps sur le bouton de l'interrupteur pendant 3-5 secondes, la lumière LED clignote Rapidement et la souris entre en mode d'appariement Bluetooth.

- 4 Cliquez sur le bouton "Bluetooth Devices" sur l'ordinateur.



- 5 Cliquez sur le bouton "Ajouter ou supprimer les périphériques Bluetooth".



- 6 Recherchez la souris Bluetooth "BT5.0 Mouse / BT3.0 Mouse" et cliquez sur le bouton d'appariement..



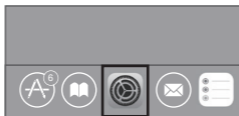
- 7 Si l'appariement est réussi, la LED s'allume pendant 5 secondes et va ensuite dehors.



Système Mac OS

Veillez utiliser les étapes d'installation Bluetooth (1 ~ 3) avant le couple.

- 1 Cliquez sur le bouton «Préférences système» sur le Mac.



- 2 Cliquez sur le bouton Bluetooth dans le dossier des préférences système.



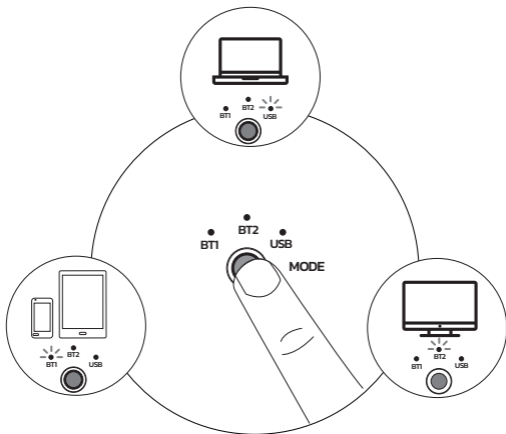
- 3 Recherchez la souris Bluetooth "BT5.0 Mouse / BT3.0 Mouse" et cliquez sur le Bouton d'appariement. S'il est complètement installé, la souris pourrait être utilisée normalement.



Changement de mode

Lorsque 2.4G et Bluetooth sont respectivement adaptés à l'appareil, vous pouvez utiliser le bouton de commutateur en bas de la souris pour passer à l'appareil correspondant.

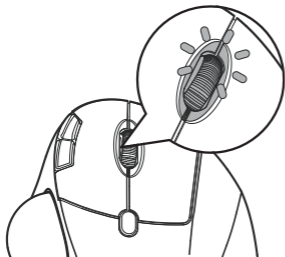
2.4G Mode LED on



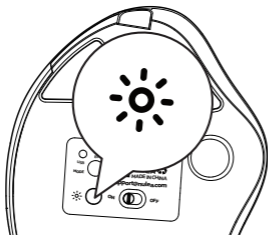
Bluetooth 1 Mode LED on

Bluetooth 2 Mode LED on

Indication lumineuse



- Commutation DPI : lumière bleue
- Chargement : lumière rouge
- Pleine charge : voyant vert
- Batterie faible : lumière bleue



- Appuyez sur le bouton pour changer le mode d'éclairage

Mise en charge

1. L'indicateur de batterie faible brille en bleu, afin de ne pas affecter l'expérience et Fonction de la souris, veuillez facturer à temps.
2. L'indicateur de charge brillera en rouge pendant la charge de la souris. La lumière indicatrice devient verte lorsqu'elle est complètement chargée.
3. La tension est inférieure à 3,3 V et le voyant de basse tension clignote 10 fois à raison d'une fois par seconde.

Mode DPI

Appuyez sur la touche DPI, et le voyant bleu clignote une fois/deux fois/trois fois/quatre fois/cinq fois, correspondant au DPI 200-400-800-1200-1600.

Mode veille

1. Pour économiser de l'énergie, la souris entrera en mode de sommeil après 30 minutes de Inactivité, appuyez sur n'importe quelle touche pour quitter le mode de sommeil.

2. Lorsque la souris est normalement connectée au récepteur, la lumière s'éteint lorsque la souris n'est pas utilisée pendant 30 secondes, et la lumière se réveille lorsque la souris est réveillée.

Mode léger

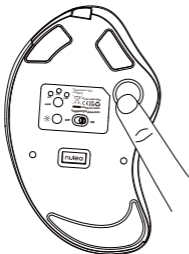
Appuyez sur le bouton LIGHT pour passer à son tour: flux-respiration-solide lumière allumée-onde-lumière éteinte.

FAQ1

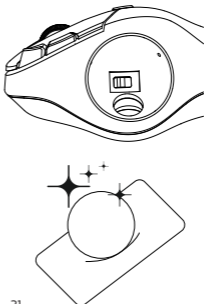
Que pouvez-vous faire lorsque le trackball et le curseur ne peuvent pas bien fonctionner?

Poussez le trackball du bas de la souris. Utilisez un chiffon sec pour nettoyer régulièrement le trackball pour de meilleures performances.

Sortez le trackball



Nettoyez le trackball et le capteur



FAQ2

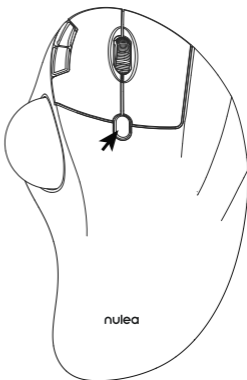
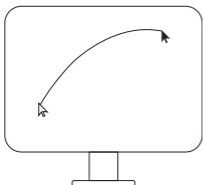
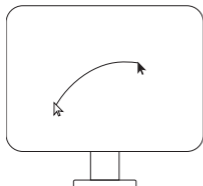
Notez le problème de charge de la souris.

1. Veuillez utiliser notre câble de charge inclus pour charger la souris.
2. N'utilisez pas de chargeur rapide pour charger la souris. L'utilisation d'un adaptateur haute puissance pour charger la souris peut brûler la puce de la souris. (Utilisez directement le port USB de l'ordinateur ou un chargeur 5V pour charger la souris).
3. Pour votre meilleure expérience, veuillez facturer complètement la souris avant votre première utilisation.

FAQ3

Pourquoi le curseur est-il trop sensible pour contrôler?

Il y a 5 niveaux de DPI: 200-400 (par défaut) -800-1200-1600. Appuyez sur le bouton DPI pour ajuster votre préférence.



FAQ4

Ne vous habituez pas à utiliser la souris trackball.

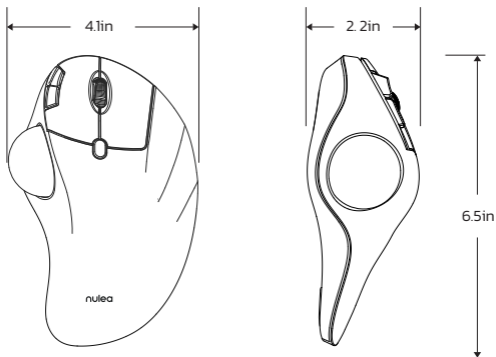
La souris trackball aide à soulager l'inconfort du poignet lors du travail. Le fonctionnement spécial de la souris peut vous mettre mal à l'aise au début. Une fois que vous aurez commandé de l'utiliser, vous obtiendrez ses avantages et vous en tomberons amoureux.

FAQ5

Come riprogrammare i pulsanti del mouse?

1. Tutte le chiavi non sono programmabili.
2. I pulsanti in avanti/indietro non sono compatibili con Mac OS.

Parametri di base



Interfaccia	2.4G/Bluetooth
DPI	200 - 400(Predefinito) - 800 - 1200 -1600
Dimensioni	4.1 * 6.5 * 2.2in
Peso	177.6g
Distanza di trasmissione	10m
Potenza nominale	DC 5V---0.3A
Rapporto Tasso	250HZ (2.4G) / 115HZ (Bluetooth)

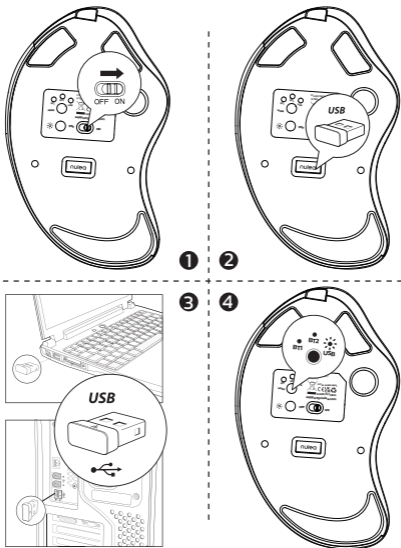
Contenuto della confezione

1* Mouse Trackball senza fili

1* Cavo USB-C

1* Manuale dell'utente

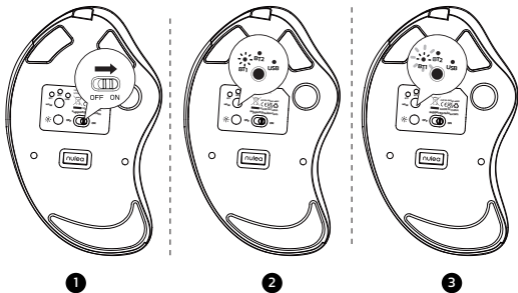
Connessione 2.4G



- 1 Accendi il mouse.
- 2 Elimina il ricevitore da 2,4 g nella parte inferiore del mouse.
- 3 Collega il ricevitore da 2,4 g nella porta USB del computer.
- 4 Premere il pulsante interruttore del canale per passare alla modalità 2.4G. Quando il LED si illumina per 5 secondi e poi si spegne, l'abbinamento ha successo.

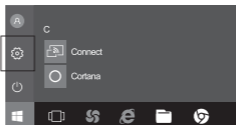
Connessione Bluetooth

Sistema Windows(Prendi Windows 10 come esempio)



- 1 Accendere il mouse.
- 2 Premere il pulsante interruttore del canale per passare alla modalità Bluetooth.
- 3 Premere a lungo il pulsante Switch per 3-5 secondi, la luce LED lampeggia rapidamente e il mouse entra nella modalità di accoppiamento Bluetooth.

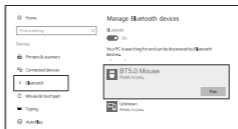
- 4 Fare clic sul pulsante "Bluetooth Devices" sul computer.



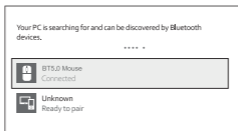
- 5 Fare clic sul pulsante "Aggiungi o rimuovi i dispositivi Bluetooth".



- 6 Cerca il mouse Bluetooth "BT5.0 Mouse / BT3.0 Mouse" e fai clic su il pulsante di abbinamento.



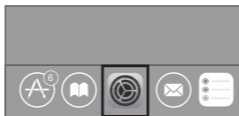
- 7 Se l'abbinamento ha successo, il LED si illumina per 5 secondi e poi va fuori.



Sistema Mac OS

Si prega di utilizzare i passaggi di installazione Bluetooth (1~3) prima dell'abbinamento.

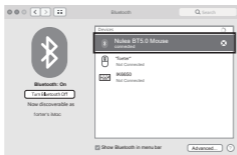
- 1 Fare clic sul pulsante "Preferenze di sistema" sul Mac.



- 2 Fare clic sul pulsante Bluetooth sulla cartella Preferenza di sistema.



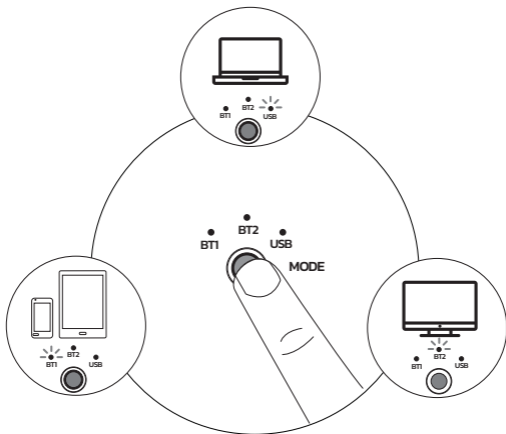
- 3 Cerca il mouse Bluetooth "BT5.0 Mouse / BT3.0 Mouse" e fai clic sul Pulsante di abbinamento. Se installato completamente, il mouse potrebbe essere utilizzato normalmente.



Interruttore di modalità

Quando 2.4G e Bluetooth vengono abbinati correttamente al dispositivo rispettivamente, è possibile utilizzare il pulsante Switch nella parte inferiore del mouse per passare al dispositivo corrispondente.

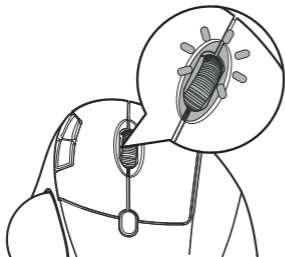
2.4G Mode LED on



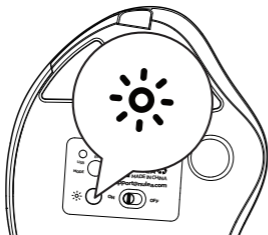
Bluetooth 1 Mode LED on

Bluetooth 2 Mode LED on

Indicazione luminosa



- Commutazione DPI: luce blu
- Carica: luce rossa
- Completamente carica: luce verde
- Batteria scarica: luce blu



- Premere il pulsante per cambiare la modalità di illuminazione

Carica

1. L'indicatore a bassa batteria brilla blu, per non influire sull'esperienza e funzione del mouse, si prega di caricare in tempo.
2. L'indicatore di ricarica brillerà in rosso mentre il mouse è in carica. Il La luce dell'indicatore diventa verde quando è completamente carica.

Modalità DPI

Premere il tasto DPI e la luce blu lampeggia una volta/due volte/tre volte/quattro volte/cinque volte, corrispondenti a DPI 200-400-800-1200-1600.

Modalità luce

1. Per salvare l'alimentazione, il mouse entrerà in modalità sospensione dopo 30 minuti di Inattività, premere qualsiasi tasto per uscire dalla modalità di sospensione.
2. Quando il mouse è normalmente collegato al ricevitore, la luce si spegne quando il mouse non viene utilizzato per 30 secondi e si risveglia quando il mouse viene risvegliato.

Modalità Sleep

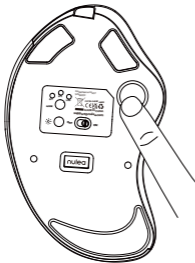
Premere il pulsante Luce per accendere a turno: flusso-respirazione-solido luce accesa-onda-luce spenta.

FAQ1

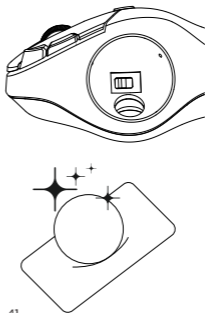
Cosa puoi fare quando il trackball e il cursore non possono funzionare bene?

Spingi la trackball dal fondo del mouse. Usa un panno asciutto per pulire regolarmente la trackball per prestazioni migliori.

Elimina la trackball



Pulisci il trackball e il sensore



FAQ2

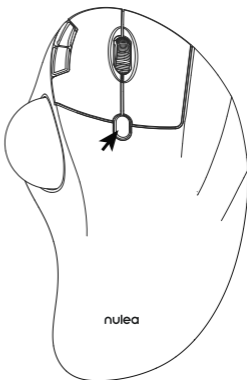
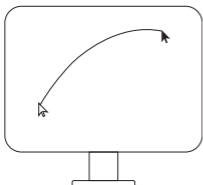
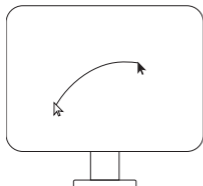
Nota il problema di ricarica del mouse.

1. Utilizzare il nostro cavo di ricarica incluso per caricare il mouse.
2. Non utilizzare un caricabatterie veloce per caricare il mouse. L'uso di un adattatore ad alta potenza per caricare il mouse può bruciare il chip del mouse. (Utilizzare direttamente la porta USB del computer o un caricabatterie da 5 V per caricare il mouse).
3. Per la tua migliore esperienza, si prega di caricare completamente il mouse prima del primo utilizzo.

FAQ3

Perché il cursore è troppo sensibile per il controllo?

Esistono 5 livelli DPI: 200-400 (impostazione predefinita) -800-1200-1600. Premere il pulsante DPI per regolare le tue preferenze.



FAQ4

Non abituarti a usare il mouse trackball.

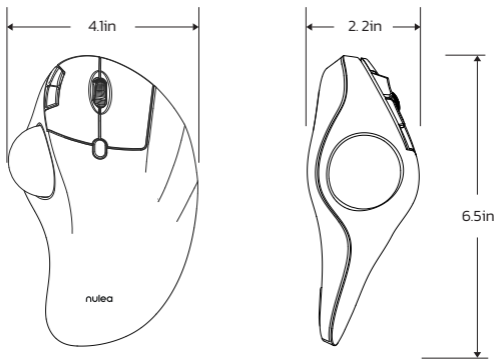
Il mouse trackball aiuta ad alleviare il disagio del polso quando si lavora. L'operazione speciale del mouse potrebbe farti sentire a disagio all'inizio. Una volta che avrai il comando di usarlo, ne otterrai i suoi benefici e ne innamori.

FAQ5

Come riprogrammare i pulsanti del mouse?

1. Tutte le chiavi non sono programmabili.
2. I pulsanti in avanti/indietro non sono compatibili con Mac OS.

Parámetros básicos



Interfaz	2.4G/Bluetooth
DPI	200 - 400(Por defecto) - 800 - 1200 -1600
Tamaño	4.1 * 6.5 * 2.2in
Peso	177.6g
Distancia de transmisión	10m
Potencia nominal	DC 5V---0.3A
Tasa de informe	250HZ (2.4G) / 115HZ (Bluetooth)

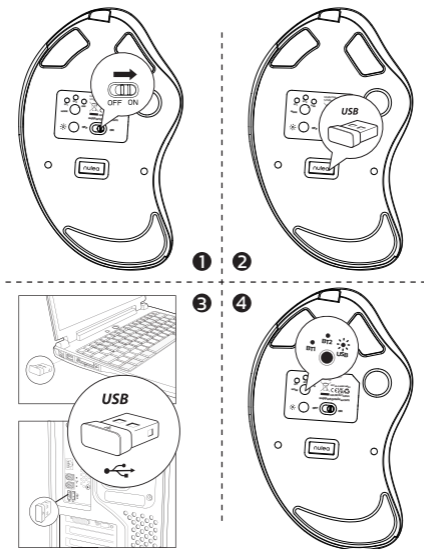
Contenu du paquet

1* Ratón inalámbrico con bola de seguimiento

1* Cable USB-C

1* Manual de usuario

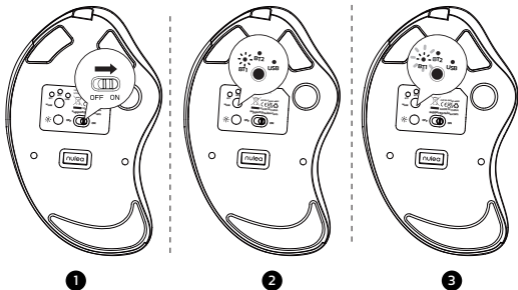
Conexión 2.4G



- 1 Encienda el mouse.
- 2 Saque el receptor 2.4G en la parte inferior del mouse.
- 3 Conecte el receptor 2.4G al puerto USB de su computadora.
- 4 Presione el botón del interruptor del canal para cambiar al modo 2.4G. Cuando LED se ilumina durante 5 segundos y luego sale, el emparejamiento es exitoso.

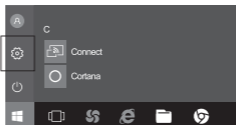
Conexión Bluetooth

Sistema de Windows(tome Windows 10 como ejemplo)



- 1 Encienda el mouse.
- 2 Presione el botón de interruptor del canal para cambiar al modo Bluetooth.
- 3 Larga presione el botón del interruptor durante 3-5 segundos, la luz LED parpadea rápidamente y el mouse entra en modo de emparejamiento Bluetooth.

- 4 Haga clic en el botón "Dispositivos Bluetooth" en la computadora.



- 5 Haga clic en el botón "Agregar o eliminar dispositivos Bluetooth".



- 6 Busque el Bluetooth "BT5.0 Mouse / BT3.0 Mouse" y haga clic el botón de emparejamiento.



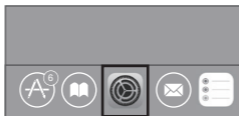
- 7 Si el emparejamiento es exitoso, el LED se ilumina durante 5 segundos y luego se va afuera.



Sistema Mac OS

Opere los pasos de instalación de Bluetooth (1 ~ 3) antes de emparejarse.

- 1 Haga clic en el botón "Preferencias del sistema" en la Mac.



- 2 Haga clic en el botón Bluetooth en la carpeta de preferencias del sistema.



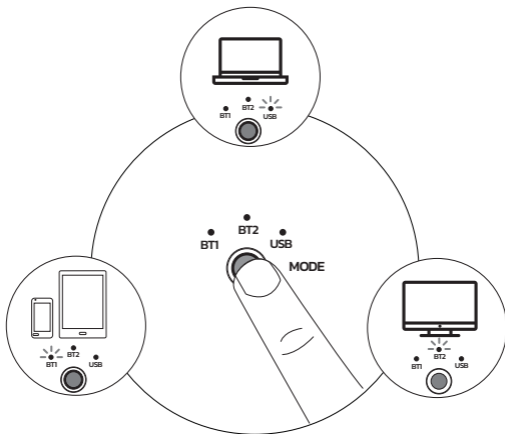
- 3 Busque en el ratón Bluetooth "BT5.0 Mouse / BT3.0 Mouse" y haga clic en el Botón de emparejamiento. Si se instala por completo, el mouse podría usarse normalmente.



Cambio de modo

Cuando 2.4G y Bluetooth coinciden correctamente con el dispositivo, respectivamente, puede usar el botón de interruptor en la parte inferior del mouse para cambiar al dispositivo correspondiente.

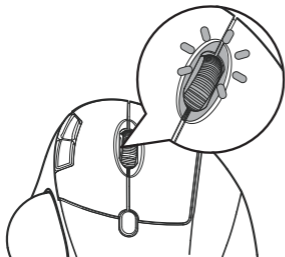
2.4G Mode LED on



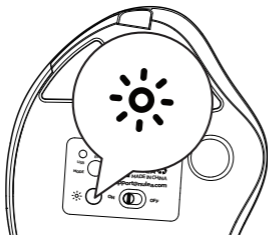
Bluetooth 1 Mode LED on

Bluetooth 2 Mode LED on

Indicación luminosa



- Cambio de DPI: luz azul
- Carga: luz roja
- Carga completa: luz verde
- Batería baja: luz azul



- Pulse el botón para cambiar el modo de iluminación

Carga

1. El indicador de batería bajo brilla azul, para no afectar la experiencia y función del mouse, por favor, por favor, cargue a tiempo.
2. El indicador de carga brillará rojo mientras el mouse está cargando. Los la luz indicadora se vuelve verde cuando está completamente cargada.
3. La tensión es inferior a 3,3 V e l'indicatore di bassa tensione lampeggia 10 volte alla frequenza di 1 volta al secondo.

Modalità DPI

Premere il tasto DPI e la luce blu lampeggia una volta/due volte/tre volte/quattro volte/cinque volte, corrispondenti a DPI 200-400-800-1200-1600.

Modo de luz

1. Para guardar la energía, el mouse entrará en modo de suspensión después de 30 minutos de inactividad, presione cualquier tecla para salir del modo de suspensión.

2. Cuando el ratón está normalmente conectado al receptor, la luz se apagará cuando el ratón no esté en uso durante 30 segundos, y la luz se despertará cuando el ratón se despierte.

Modo de sueño

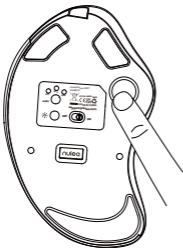
Presione el botón de luz para cambiar a su vez: flujo-respiración-sólido luz encendida-onda-luz apagada.

FAQ1

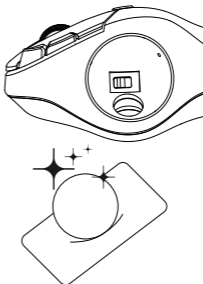
¿Qué puedes hacer cuando la bola de seguimiento y el cursor no pueden funcionar bien?

Empuje la bola de pista desde la parte inferior del mouse. Use un paño seco para limpiar la bola de pista regularmente para un mejor rendimiento.

Saca la bola de seguimiento



Limpiar el trackball y el sensor



FAQ2

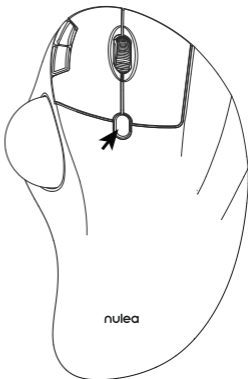
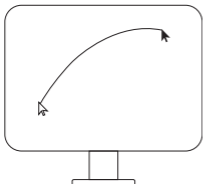
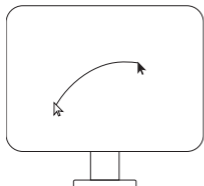
Tenga en cuenta el problema de carga del mouse.

1. Utilice nuestro cable de carga incluido para cargar el mouse.
2. No use un cargador rápido para cargar el mouse. El uso de un adaptador de alta potencia para cargar el mouse puede quemar el chip del mouse. (Use directamente el puerto USB de la computadora o un cargador de 5V para cargar el mouse).
3. Para su mejor experiencia, cargue completamente el mouse antes de su primer uso.

FAQ3

¿Por qué el cursor es demasiado sensible al control?

Hay 5 niveles de DPI: 200-400 (predeterminado) -800-1200-1600. Presione el botón DPI para ajustar su preferencia.



FAQ4

No te acostumbres a usar Trackball Mouse.

El ratón Trackball ayuda a aliviar la incomodidad de la muñeca cuando se trabaja. La operación especial del mouse puede hacerte sentir incómodo al principio. Una vez que obtenga el mandato de usarlo, obtendrá sus beneficios y se enamorará de él.

FAQ5

¿Cómo reprogramar los botones del mouse?

1. Todas las claves no son programables.
2. Los botones hacia adelante/hacia atrás no son compatibles con Mac OS.

FCC Statement

Any Changes or modifications not expressly approved by the party responsible for compliance could void the user's authority to operate the equipment.

This device complies with part 15 of the FCC Rules. Operation is subject to the following two conditions:

(1) This device may not cause harmful interference, and (2) this device must accept any interference received, including interference that may cause undesired operation.

FCC Radiation Exposure Statement

This equipment complies with FCC radiation exposure limits set forth for an uncontrolled environment. This equipment should be installed and operated with minimum distance 20cm between the radiator& your body.

Correct Disposal of This Product



(Waste Electrical & Electronic Equipment)

This Marking shown on the product or its literature, indicate that it should not be disposed with other household wastes at the end of its working life.

To prevent possible harm to the environment or human health from uncontrolled waste disposal, please separate this from other types of wastes and recycle it responsibly to promote the sustainable reuse of material resources Household user should contact either the retailer where they purchased this product or their local government office, for details of where and how they can take this item for environmentally safe recycling.

Business users should contact their supplier and check the terms and conditions of the purchase contract This product should not be mixed with other commercial wastes for disposal.

The **Bluetooth**® word mark and logos are registered trademarks owned by the Bluetooth SIG, Inc. and any use of such marks by Nulaxy is under license. Other trademarks and trade names are those of their respective owners.

nulea®

WORK WITH YOUR FAVORITE



Visit www.nulea.com for our 24/7 live chat or send an email to support@nulea.com for support.



FCC ID : 2A59F-M501



MADE IN CHINA

UK	REP
-----------	------------

CET PRODUCT SERVICE LTD.
Beacon House Stokenchurch Business Park,
Ibstone Rd, Stokenchurch
High Wycombe HP14 3FE UK
Email: info.cetservice@gmail.com
Phone: +447419325266

EC	REP
-----------	------------

UAB Qixiang Europe
Pranciškonų g. 6-46, LT-01133 Vilnius, Lithuania
Technical Information Center
Trakehner Str. 7-9, 60487 Frankfurt am Main, Germany
Email: qixiang.europe@gmail.com
Phone: +496976895074