

ieGeek

Quick Start Guide



Bell J5

www.iegeek.com | service@iegeek.com

Manual contents are subject to change without notice in accordance with our policy of continuous product improvement. The actual interface is subject to the doorbell APP interface you get.

Thank you for purchasing an ieGeek Video Doorbell!

We want to personally reach out and thank you for purchasing from our Amazon store. Selling on Amazon is what we do to support our family, and product reviews are the lifeblood of our business. It would mean a lot to us if you could take one minute to help share the love by leaving us an honest review via the link below:

www.amazon.com/ryp

Thank you again for being one of our amazing customers!

Sincerely,

ieGeek Team



Scan to join our community

CONTENT

1. After-sale Support	01
2. What's in the Box	02
3. Meet the Doorbell.....	02
4. Meet the Chime.....	03
5. Set up your Doorbell	04
6. Live View	06
7. Setting	07
7.1 APP Interface Introduction	07
7.2 Alert Setting	07
7.3 Device Sharing	08
8. Recording	10
9. History Layback	11
10. Connect the Chime	12
11. Installation	13
11.1 Retro-fit Installation.....	14
11.2 Hardwire Installation	16
12. Trouble Shooting.....	17
13. Specification.....	18
14. FAQ	21

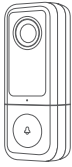
1. After-sale Support

We provided 12 months warranty for this smart video doorbell. If you have any questions, please feel free to send us direct messages on Amazon or emails at service@iegeek.com. We will reply to you in a 24-hour manner.

Tips:

- The smart video doorbell only supports 2.4GHz WIFI, it doesn't support 5GHz WIFI.
- Please ensure that the Wi-Fi signal strength is to be over than 85%; if the smart video doorbell is far away from the signal source, it won't be connected successfully for the first time.
- If your router is connected with too many devices, the smart video doorbell will fail to connect Wi-Fi because of the IP address conflict.
- This smart video doorbell does not support PC Browser and Software.
- This smart video doorbell supports events recording when Wi-Fi disconnected.
- Video playback works in CloudEdge APP only. It does not support the 3rd party player.
- Manually snapshot and recording files are saved in mobile. Events snapshot files are saved in Cloud. Events recording files are saved in Micro SD card.
- It will consume the batteries power if you watch live footage or the recorded videos from the SD card.

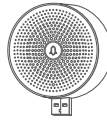
2. What's in the box



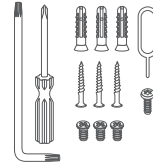
Video Doorbell



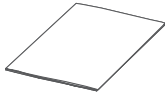
20° Angle Mount



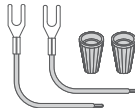
Indoor Wireless Chime



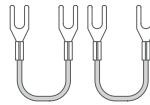
List Tools



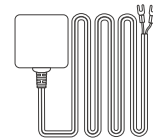
User Guide



Extension Wire
& Wire Nuts

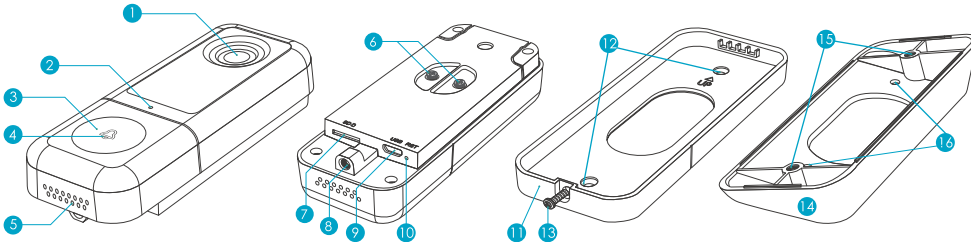


Jumper for
Indoor Chime



Power Adapter
(DC12V 1A)

3. Meet the doorbell

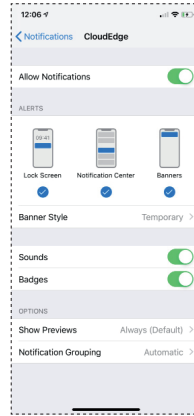


- | | | | |
|-------------------|-----------------------|------------------------|------------------------------|
| ① Camera(2K) | ⑤ Speakers | ⑨ Micro USB Port | ⑬ Security Screw |
| ② Microphone | ⑥ Hardwire Terminals | ⑩ Reset Hole | ⑭ 20° Angle Mount (Optional) |
| ③ Doorbell Button | ⑦ MicroSD Slot | ⑪ Wall Mount Bracket | ⑮ Doorbell Mounting Holes |
| ④ LED Indicator | ⑧ Security Screw Hole | ⑫ Mounting Screw Holes | ⑯ Wall Mounting Screw Holes |

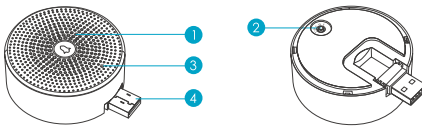
Note: The doorbell works with both 12V-24V AC and 12V DC hardwire power source. Either wire can be connected to either terminal. The cable order doesn't matter.

Tips: Please turn on 2 permissions below when use this APP at the first time.

1. Allow 'CloudEdge' APP to access mobile cellular data and wireless LAN, or it will be failed to add doorbell.
2. Allow 'CloudEdge' APP to receive pushed message, or the cellphone will not receive alarm push when motion detection or audible alarm is triggered.



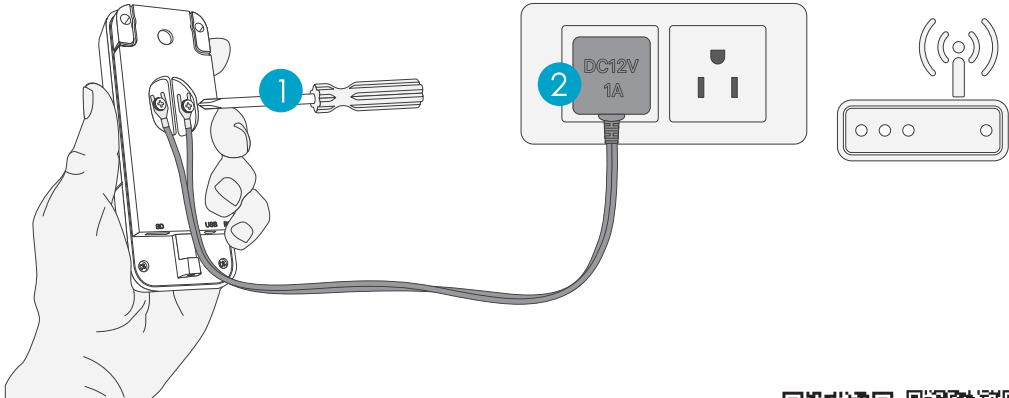
4. Meet the chime



- | | |
|----------------|-----------------------|
| 1 Speakers | 3 LED Indicator |
| 2 Reset Button | 4 USB Port (Foldable) |

5. Set up your doorbell

- 1 Attach the wires from the provided power adapter to the terminals on the rear of your doorbell, and tighten the terminal screws with screwdriver. **Each wire can be connected to each power terminal. The cable order doesn't matter.**
- 2 Plug the adapter to your AC outlet. Install the doorbell within 30 feet of your 2.4GHz WiFi router. It is suggested to test your doorbell prior to physical installation.



- 3 Download and install the 'CloudEdge' App to your smartphone. Launch the App and register an account with your mobile phone number or email ID.



iOS

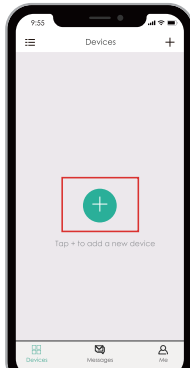
Android

- 4 **Register Account:** New users need to register by e-mail, click 'Register', and follow the steps to complete the registration of the account, then log in.

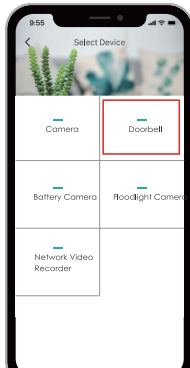
Note:

- When registering a new account, please choose the region which you are actually in. (Different registered regions can't share the doorbell.)
- Please choose to register by e-mail.

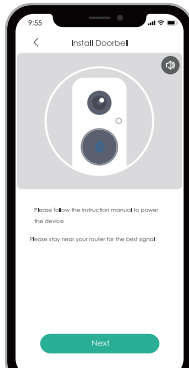
5 Start the Wi-Fi configuration following the in-App instructions or referring to below tutorial steps.



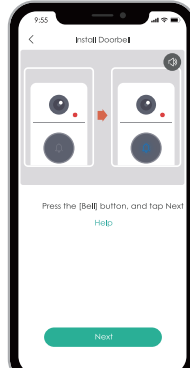
1. Tap "+" to add device



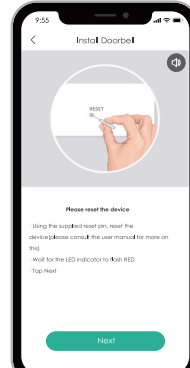
2. Select Doorbell



3. Check power status



4. Activate the doorbell



5. Reset device



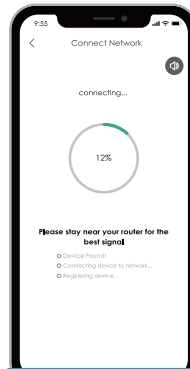
6. Input Wi-Fi password



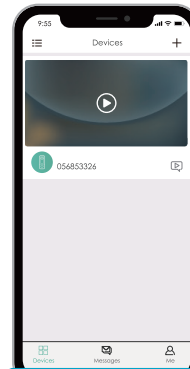
7. Prepare Code Scanning



8. Generate QR Code



9. Wait for connection



10. Device Added

6 LED indicator explanation:



- Solid Red
Device is abnormal.



- Flashing Red Slowly
Ready for WiFi configuration.



- Flashing Red Quickly
Device is connecting to WiFi.



- Solid Blue
Successfully connected to WiFi network.



- Flashing Blue Quickly
Firmware is upgrading.



- Nothing
Power failure/
Status light is turned off in doorbell Settings.

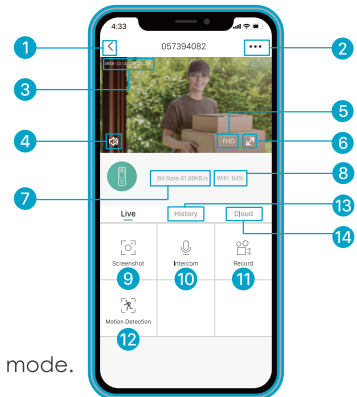
6. Live view

Tap on the Home page devices to watch live view from your doorbell.

- | | |
|-------------------------|--------------------------|
| 1 Quit live viewing | 8 Wi-Fi signal status |
| 2 Setting menu | 9 Screenshot button |
| 3 Date & time watermark | 10 Speak to the scene |
| 4 Volume on/off | 11 Record on the phone |
| 5 FHD/HD/SD switch | 12 Body detection on/off |
| 6 Full screen display | 13 Notification history |
| 7 Stream bit rate | 14 Cloud storage service |

Note:

Live viewing will not trigger device recording at Event recording mode.

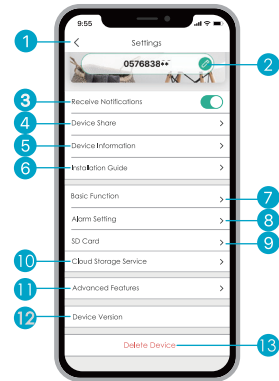


Live view interface

7. Settings

7.1 APP Interface Introduction

- 1 Back to live view
 - 2 Edit device name
 - 3 Receive/block motion alarms
 - 4 Share device with other users
 - 5 Device information
 - 6 Installation Guide
 - 7 Basic function:
 - 8 Alarm setting:
 - 9 SD Card Setting
 - 10 Cloud Storage Service
 - 11 Advanced Features: Onvif on/off
 - 12 Device Version
 - 13 Delete Device
1. Motion detection on/off
 2. Sensitivity Setting
 3. Alarm interval Setting
 4. Alert only when people appear(on/off)
 5. Alarm schedule
 6. Motion detection area setting

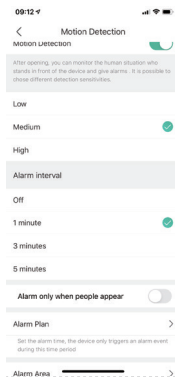
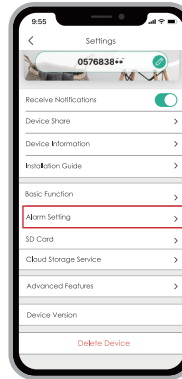
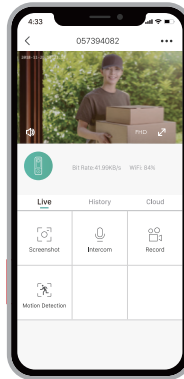


7.2 Alert Settings

PIR 'Motion Detection' is on by default and the default sensitivity is 'Medium', but it is adjustable.

Alert settings steps: 'Setting (...) ' -> 'Alarm Settings' -> 'Motion Detection'.

Tips: The detecting distance is 4 meters (13ft).



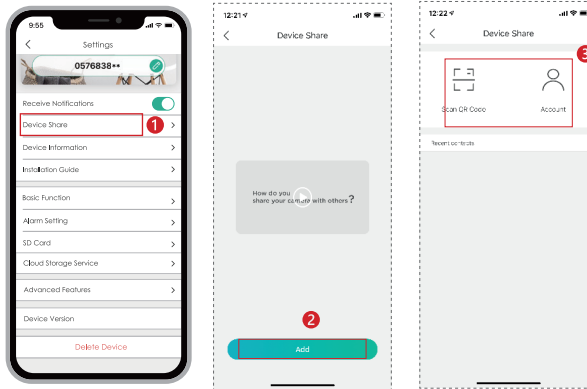
Sensitivity	Detecting Distance(For moving objects)
Low	Up to 2 meters(7 ft)
Medium	Up to 4 meters(13 ft)
High	Up to 6 meters(20 ft)

Note: Higher sensitivity offers longer detecting distance, but it would lead to more false alarms. You are advised to set up the sensitivity level to 'Medium' when you install the doorbell outdoor.

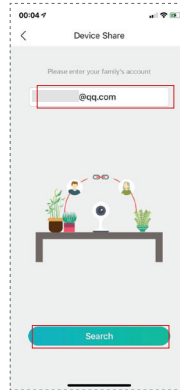
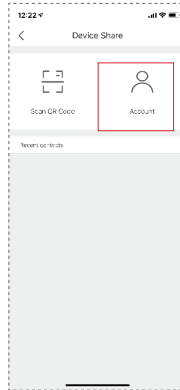
7.3 Device Sharing

Warning: When you have a sharing, please make sure the APP account is registered in the same regions. Otherwise, you won't share successfully. Other users can only live view & playback. All users can receive doorbell calls and alarm notifications (Need to open 'receive notifications').

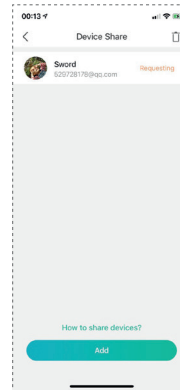
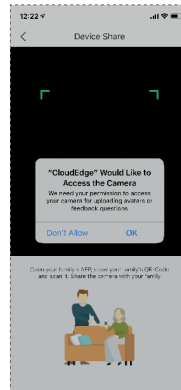
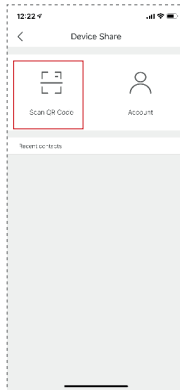
Sharing Steps: Settings (...) --> Device Share --> Tap on 'Add' --> Choose 'Scan QR Code' / 'Account' share



Method 1: Sharing by account searching
 Tap on "Account" --> Type in account ID--> Confirm Sharing -->Friends accept sharing.

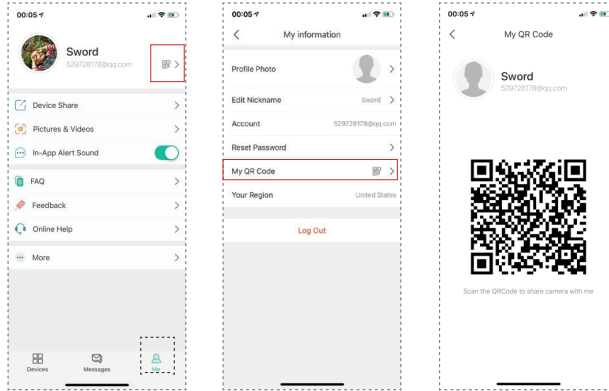


Method 2: Sharing by QR code scanning
 Tap on "Scan QR code" --> Scan friends' QR code --> Confirm Sharing--> Friends accept sharing.
 find out their OR codes



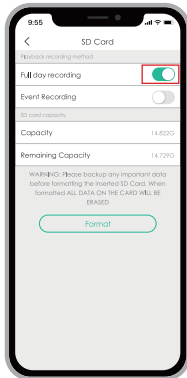
Note: The new users can in the App, and let the administrator scan the QR Code and share device.

How to find your QR code? (Run 'CloudEdge App' --> Tap on " " --> Tap on " " --> Tap on " My QR Code" --> Let the administrator scan your QR Code

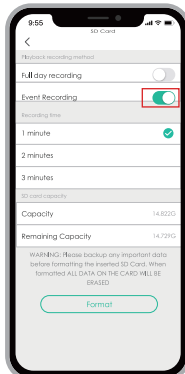


8. Recording

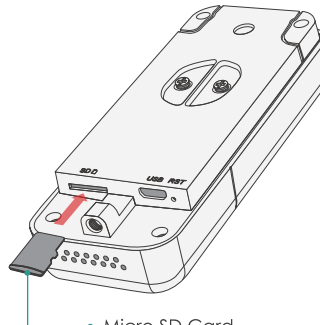
Your doorbell comes with **Event recording** by default. It will record visitor calls and motion detection events. You can also enable **Full day recording** in the **Settings -> SD Card**.



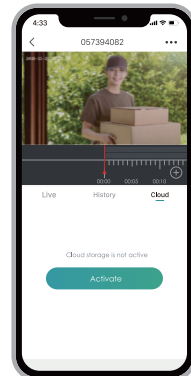
Full Day Recording



Event Recording



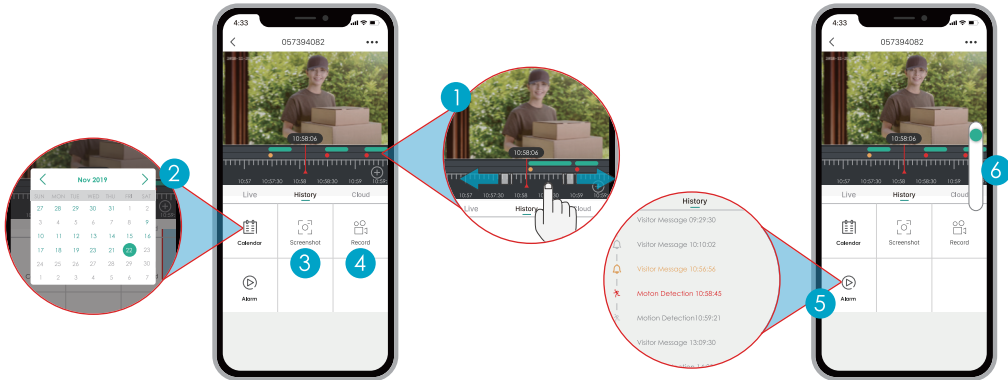
Micro SD Card
Max up to: 128GB



Cloud storage interface

9. History layback

Tap History to play the videos recorded in the MicroSD card.

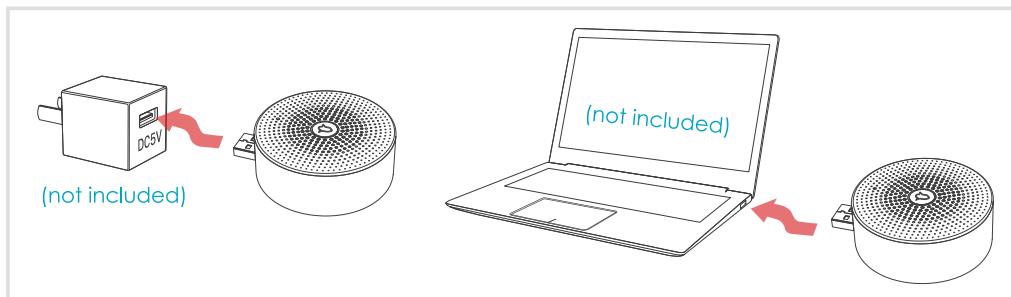


- 1** Time Line:
Slide the timeline to the left or right to locate video recordings according to time period.
— The green bar stands for video length. • The yellow dot stands for the alarm point when someone has pressed the doorbell button. • The red dot stands for the alarm point when a motion has been detected.
- 2** Calendar:
Check video history by date. The numbers in green stand for the dates that have video recordings.
- 3** Screenshot:
Tap to capture a photo and save to Me -> Pictures & Videos, Where you can share it to others.
- 4** Record:
Tap to start recording a video, tap again to end and save to Me -> Pictures & Videos, Where you share the video clips to others.
- 5** Alarm:
Tap the listed alarm records to quickly locate and display each alarm video. 🛎️ Stands for visitor call events; 🚨 stands for motion detection recordings.
- 6** Timeline Zoom:
Slide upward to zoom in the timeline and downward to zoom out.

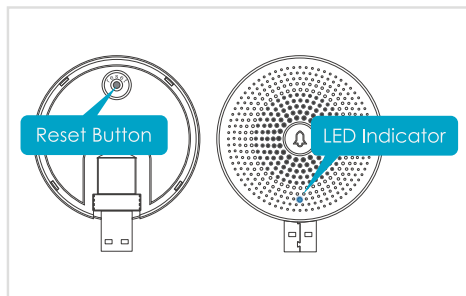
10. Connect the chime

1 Supply power to the chime

The chime can be powered by USB compatible power source(DC5V 1A), or by the USB port on your computer.

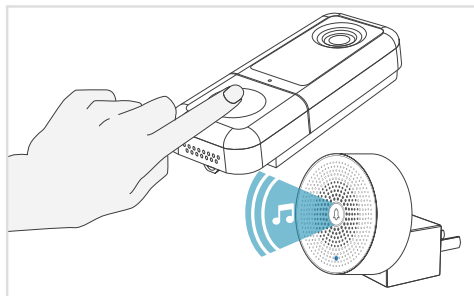


2 Click reset button



Click on **RESET** only once, and you will see the chime indicator flashing blue, indicating that the chime is in pairing mode.

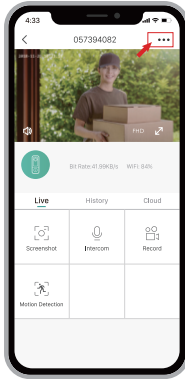
3 Press the doorbell button



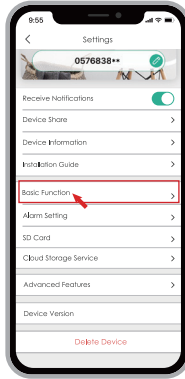
Press the doorbell button, and the chime will sound. If pairing is successful, the indicator on the chime will be in solid blue.

4 Chime settings

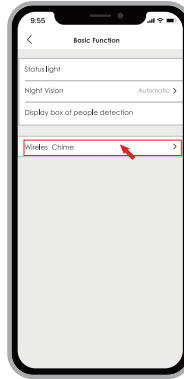
You can enter into the chime setting page following below setting steps, so as to mute the Chime Reminder, select ringtones, adjust chime volume or unbind the connection with doorbell.



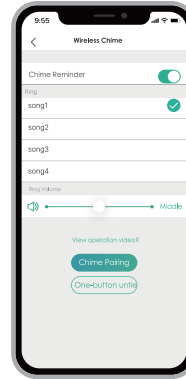
Step.1



Step.2



Step.3



Step.4

NOTE:

1. Your doorbell communicates with the chime via Radio Frequency, but not WiFi.
2. You can assign different chimes as needed.
3. Press and hold **RESET** button on the chime for 5 seconds till the indicator flashes blue 3 times, and you can also release the connection between the chime and its connected doorbell.

11. Installation

The video doorbell works with **12V** DC power source (power adapter provided), as well as an existing **12V~24V** AC hardwire power source. It enables you to make use of your legacy doorbell wiring for retro-fit installation.

NOTE:

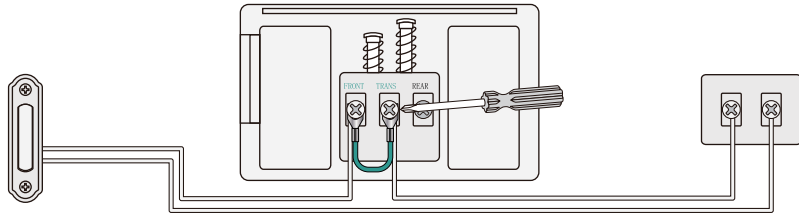
For retro-fit installation, you need to bypass your indoor mechanical chime so as to provide sufficient power for the new video doorbell.

11.1 Retro-fit installation (Optional)

To replace your existing doorbell and mechanical chime, please follow below installation steps:

- 1 Shut off the master circuit breaker in your house.
- 2 Bypass your indoor chime with provided jumper.

In most cases, the existing doorbell circuit looks similar to the image below. Remove the cover of the indoor chime and loosen the "FRONT" and "TRANS" terminal screws. Use the provided jumper to connect the two terminals, and replace the chime cover.

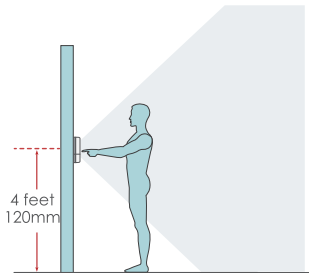


Existing Doorbell Button

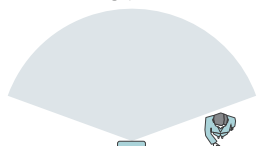
Existing Mechanical Chime

Doorbell Transformer

- 3 Select a location for your video doorbell.
Determine the mounting position of the doorbell. Check if you can reuse the existing holes on the wall. If not drill new holes to mount your video doorbell.
It is suggested to mount the doorbell at least 4 feet (120 cm) above the ground for optimal angle of view and best motion detection performance.



(Optional) Use the 20° angle mount as a supplementary mounting bracket, to adjust the viewing angle towards to fit your viewing preference.

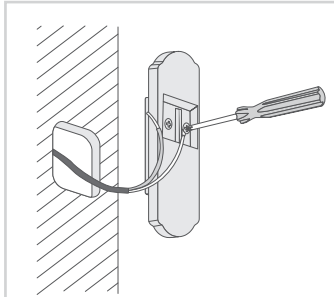


Doorbell Without Angle Mount

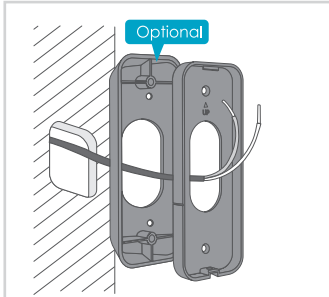


Doorbell With 20° Angle Mount

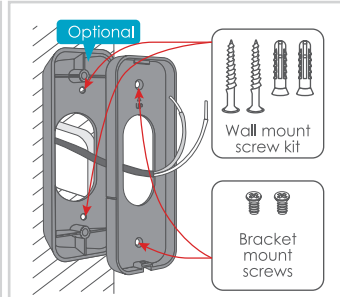
4 Replace your existing doorbell.



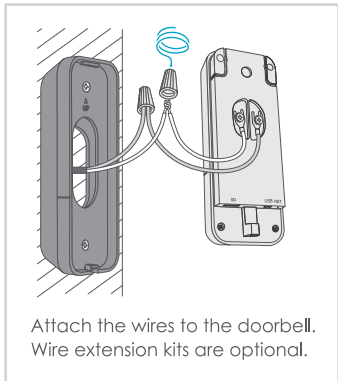
Remove the existing doorbell from the wall and disconnect the wires.



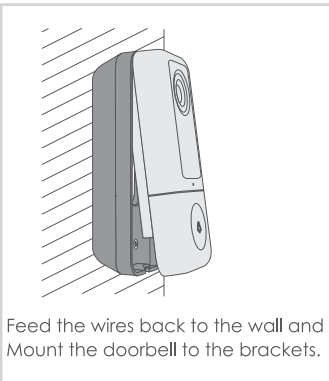
Lead the wire through the holes on the bracket before mounting.



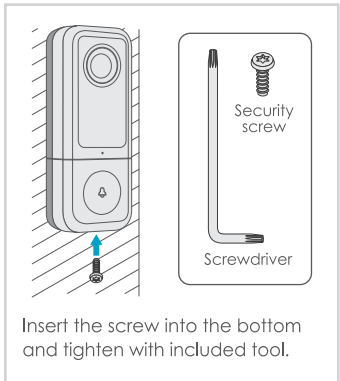
Mark the screw holes location and mount the brackets on your wall with screws.



Attach the wires to the doorbell. Wire extension kits are optional.



Feed the wires back to the wall and Mount the doorbell to the brackets.

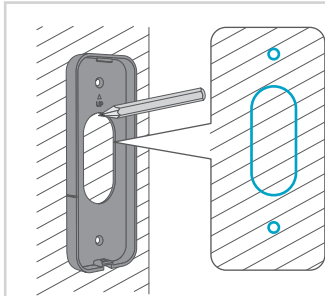


Insert the screw into the bottom and tighten with included tool.

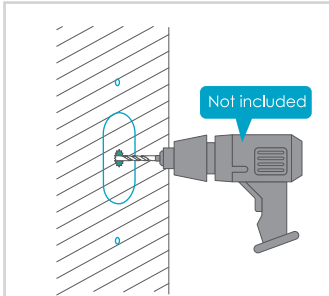
5 Restore power at the breaker, and your doorbell is ready for use.

11.2 Hardwire installation

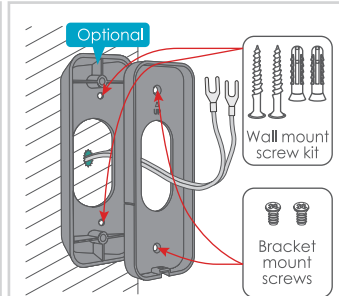
Hardwire your doorbell with the provided DC12V power adapter.



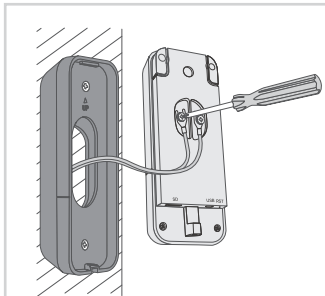
Mark the screw holes location for doorbell installation.



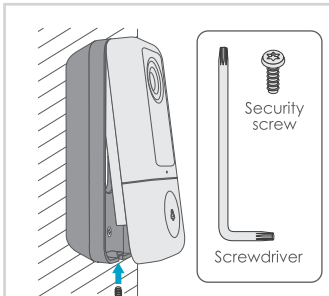
Drill a hole on the wall and lead the adapter wires out from inside.



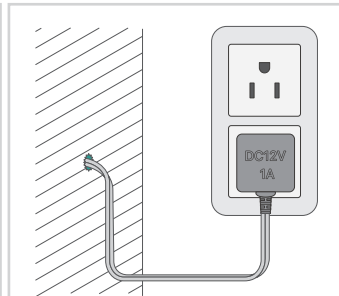
Lead the adapter wires through the brackets and install the brackets.



Attach the wires to the screws on the rear of the doorbell.



Attach your doorbell to the brackets and secure it with the security screw.



Plug the indoor adapter to your AC outlet to supply power. All set!

12. Trouble Shooting

No.	Description	Solution and Operation
1	Unable to connect	(1) Check your Wi-Fi name and password (2) Ensure your Wi-Fi is 2.4G, not 5G. (3) Ensure your doorbell and phone close to router (30-100cm)
2	Reset succeed or not	(1) Press and hold the reset button for 5 seconds (2) Hear 'boogu' sound (3) Red light turns to slow blinking
3	Change to a new network	(1) Press reset key to factory default setting (2) Re-connection
4	Alarm picture without people	(1) Opened the 'Alarm only when people appear'; (2) People move too fast.
5	No alarm push	Enable CloudEdge APP notification in mobile setting
6	No alarm video record	Please insert SD card
7	Device offline	Check if the network transferring fluency processes well
8	Browse video delay	Check the Wi-Fi network; the distance between the doorbell and the router should not be too far

13 . Specification

VIDEO DOORBELL

Video & Audio	
Image Sensor	1/3" CMOS (3.0MP)
OS	Hisilicon Lite-OS
Resolution	2304 x 1296
Image setting	FHD/HD/SD
Infrared LED	High power IR LED with ICR
Angle of view	167°
Min. illumin.	Color: 0.01 Lux@F1.2; B&W: 0.001Lux@F1.2
WDR	Digital WDR
Audio	2-way audio with noise cancellation
Frame rate	1~25 per second
Drawing speed	4 seconds
Storage	
Storage Type	Micro SD Card (Max 128GB)
Cloud storage	Support (7-day free cloud storage)
Human Detection	AI Algorithms

Network	
Wifi Frequency	2.4 GHz - 2.4835 GHz
Standards	IEEE 802.11b/g/n
Live View Speed	Within 3-4 Sec
APP	
App Name	CloudEdge
OS	IOS, Android
Remote View	Within 2-4 sec
Notification	Push notification within 2~4 sec
General	
Working Temp&Humidity	-20°C-50°C (-4°F~ 122°F) ; <90% (No condensation)
Interface protocol	Private
Communication protocl	TCP/IP,HTTP,DHCP,DNS
Installation	Flat mount bracket; 20° Angle mount bracket
Power	Hardwire 12V ~ 24V AC or 12V DC
Consumption	4.5W (Max)
Onvif	Support
Firmware Upgrade	OTA (on the air)

INDOOR CHIME

General	
Power source	DC 5V 1A
Power port	USB (Type-A)
Consumption	0.2W
Ringtones	4 ringtones optional
Volume	Max 100dB
Volume control	Low(mute), middle, high
Connection type	Radio frequency
Frequency	433MHz- 868MHz
LED	Flashing blue: pairing mode Solid blue: power on/pairing succeeded Flash blue twice: reset to factory default
Working Temp.	-10°C~50°C (14°F~ 122°F)

14. FAQ

Q1: Is the video doorbell powered by battery?

A1: No, this video doorbell requires constant hardwire power supply. Compared to battery powered doorbells, this wired video doorbell has more advanced features, like supporting full day recording, no delay quick response to visitor calls, and smaller in dimension, fitting into narrow door frames.

Q2: How to connect the hardwire to the doorbell? Does the cable order matter?

A2: Your doorbell works with both DC 12V and AC 12V - 24V hardwire power source. There are 2 terminal screws on the rear of your doorbell, and you can connect each wire to each power terminal screw. The cable order doesn't matter.

Q3: I found a Micro USB port near the Micro SD Slot, what's it for?

A3: You can power up the doorbell by the Micro USB port, using an USB compatible charger and cable. It is designed mainly for product testing in the factory.

Q4: What's the Wi-Fi range of the video doorbell?

A4: The video doorbell works with any 2.4GHz wireless Wi-Fi router, mesh system or modems. In outfield test, it works well in most 3000sqft houses. The Wi-Fi range may vary because of different WiFi transmit power, transmission distance and wall blocks in between.

Q5: I installed my video doorbell, but the video or audio quality is poor.

A5: In live view interface, WiFi status will be listed. It is suggested to ensure the Wi-Fi status be more than 70%, so as to get your doorbell work as expected. If you think your problem is caused by low Wi-Fi signal strength, try moving your Wi-Fi router closer, or add one Wi-Fi Booster to extend your Wi-Fi range.

Q6: Does the video doorbell work with existing indoor mechanical chime?

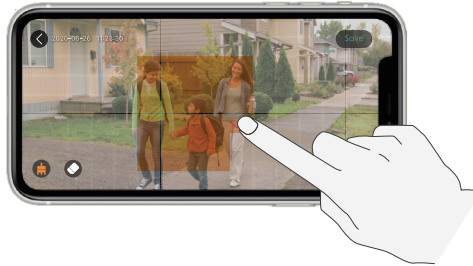
A6: No. The doorbell comes with an USB compatible wireless chime to notify people when your visitor presses the doorbell button. If you have an existing indoor chime, please use the provided jumper to bypass the existing chime, so as to provide sufficient power to the new video doorbell.

Q7: How many wireless chimes can be paired with one video doorbell?

A7: You can add as many wireless chimes as you wish on one video doorbell.

Q8: Does it support customized Motion Detection Zones.

A8: Yes it does. Go to **Settings - Alarm Setting - Motion detection - Alarm Area**. Use your finger tips to draw one or more customized motion detection zones and save your settings, and the orange zones are motion detection zones.



Q9: How does the video doorbell detect the motions? Can motion detection be disabled?

A9: The doorbell camera detects motion through the full-image pixel contrast, it will further undergo a human-shape detection to reduce false alarm rate. You can adjust the motion detection sensitivity, customize detection zone, schedule alarm intervals and disable motion detection accordingly due to various user scenarios.

Q10: Does the doorbell support cloud storage?

A10: Your doorbell support Micro SD card storage as well as cloud storage. You can activate the cloud storage service in App. There is a 7-day free cloud recording trial service. Please note that cloud storage only support event recording but not full day recording.

FCC Statement

This equipment has been tested and found to comply with the limits for a Class B digital device, pursuant to part 15 of the FCC rules. These limits are designed to provide reasonable protection against harmful interference in a residential installation. This equipment generates, uses and can radiate radio frequency energy and, if not installed and used in accordance with the instructions, may cause harmful interference to radio communications. However, there is no guarantee that interference will not occur in a particular installation. If this equipment does cause harmful interference to radio or television reception, which can be determined by turning the equipment off and on, the user is encouraged to try to correct the interference by one or more of the following measures:

- Reorient or relocate the receiving antenna.
- Increase the separation between the equipment and receiver.
- Connect the equipment into an outlet on a circuit different from that to which the receiver is connected.
- Consult the dealer or an experienced radio/TV technician for help.

Responsible for compliance could void the user's authority to operate this equipment. (Example- use only shielded interface cables when connecting to computer or peripheral devices).

Any Changes or modifications not expressly approved by the party responsible for compliance could void the user's authority to operate the equipment.

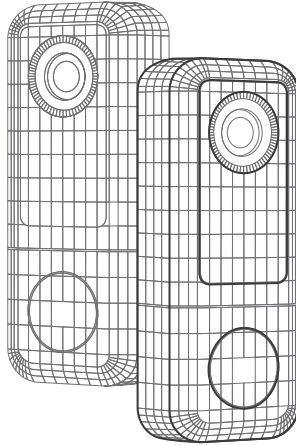
This equipment complies with Part 15 of the FCC Rules. Operation is subject to the following two conditions:

- (1) This device may not cause harmful interference, and;
- (2) This device must accept any interference received, including interference that may cause undesired operation.

FCC Radiation Exposure Statement:

The equipment complies with FCC Radiation exposure limits set forth for uncontrolled environment. This equipment should be installed and operated with minimum distance 20cm between the radiator and your body.

(FCC ID: 2AUSPBELL-J)



Be there. Secure.

© 2020 ieGeek. All rights reserved. ieGeek, the ieGeek logo, and other ieGeek marks are owned by ieGeek and may be registered.

ieGeek assumes no responsibility for any errors that may appear in this manual. Information contained herein is subject to change without notice.

