

## 2.9. Device Sharing

After you added a smart device to the list in your smartphone, no other smart phone can control this smart device. Use the device sharing to grant other Smart Life users the permission to use. Click "Add" and enter the phone number or email address of the registered user you want to share the smart device with.

## 3. Set up Amazon Echo ( Can only control brightness and ON/OFF)

You can download Alexa App from App Store or Google Play. Or follow this link to setup Alexa:

<http://alexa.amazon.com/spa/index.html>, alternatively you can setup Alexa by using the Alexa app.

### 3.1. Set up Echo using the Alexa app

You can skip this part if your Echo device is already set up.

3.1.1. Make sure your Echo device is activated.

3.1.2. Make sure Echo is in a Wi-Fi network (2.4G) which can access the Amazon service.

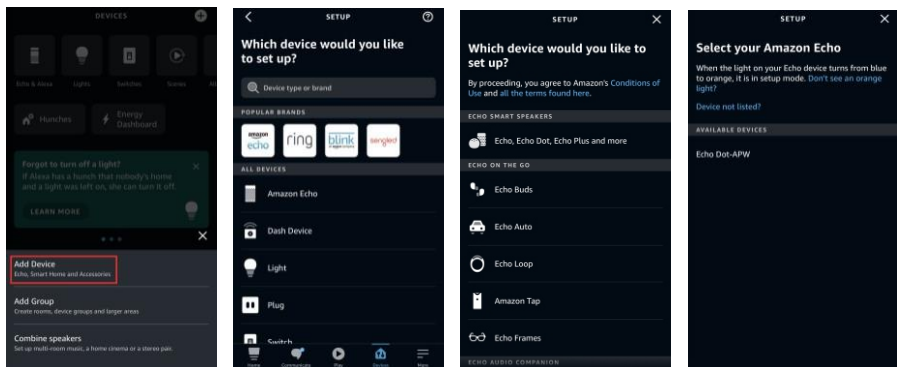
3.1.3. Open the Alexa app.

3.1.4. Input your Amazon account and password

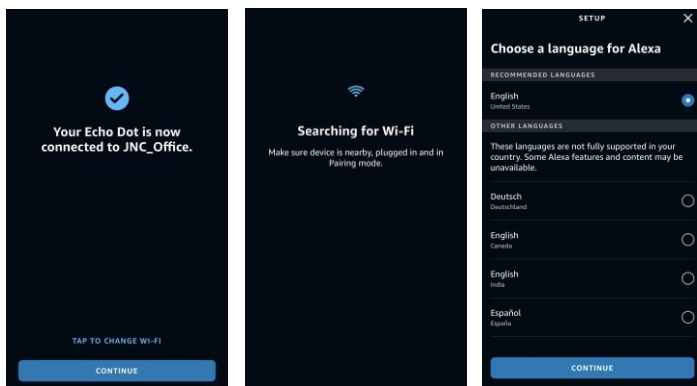
and tap "SIGN IN".

3.1.5. Tap the "+" button in the upper right corner, select

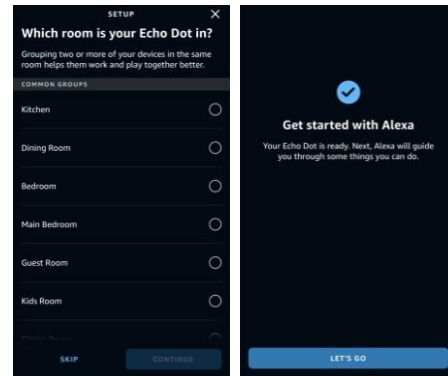
"Add Device". Long press the dot button on the top of your Echo device until the orange light shines, then tap "Amazon Echo" and select your echo model and confirm it.



3.1.6. Select your Wi-Fi and Input the Wi-Fi password to connect your echo model to Wi-Fi successfully, then choose a language for Alexa.



3.1.7. Set the group of your Echo device and the setup is completed.



## 4. Control your smart devices through Echo

Now you can control your smart devices through Echo. You can use the following commands to control your devices (e.g. bedroom light):

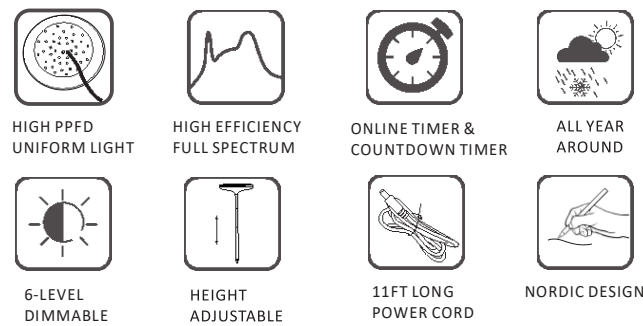
Alexa, turn on/off bedroom light.

Alexa, set bedroom light to 50 percent.

Alexa, brighten/dim bedroom light.

**Note:** If your smart device is already added in Smart Life app, the device will show in Alexa devices list. Everytime you change the name of your smart device, the name of your device will also be changed automatically on Alexa app.

## Features



## Recommended potted plants

- Herbs: Basil, Parsley, Thyme, Mint, Dill etc.
- Flowers: Dianthus, Coreopsis, Gazania, Phlox etc.
- Succulents: Cotyledon, Sedum, Echeveria etc.
- Large plants (Height<6ft): Bird of Paradise, Triangle Ficus, Parlor Palm, Parlor Palm, Umbrella Tree, Yucca, Rubber Tree, Olive Tree, Lemon Tree, Ficus Alia Plant, Sweetheart Tree, Dragon Tree, Croton, False Castor Plant, Desert Rose, Jade Plant, Weeping Fig, Money Tree, Hibiscus Tree etc

## Gardening tips

- Ideal temperature: 65-76°F/ 16-24°C.
- Keep the lighting panel 1"-2" above the plants to make sure they get the right amount of light.
- 16 hours on and 8 hours off with strongest brightness is the best setting for plants to grow better and faster as only when plants get enough DLI (Daily Light Integral), will they grow faster and stronger.
- The indoor garden only offers the necessary light for the growth of plant. Reasonable moisture, nutrients, temperature and timely maintenance and other essential factors are also necessary to maintain the health of plants.

For more gardening tips, please visit [www.i-growled.com](http://www.i-growled.com) or send an E-mail to [info@i-growled.com](mailto:info@i-growled.com), we will reach you within 24 hours.

## Warranty

GrowLED warrants this product for free from defects in material and workmanship for 1 year since the date of purchase. This warranty will be invalid if the product has been misused, damaged by accident or in any other improper use.

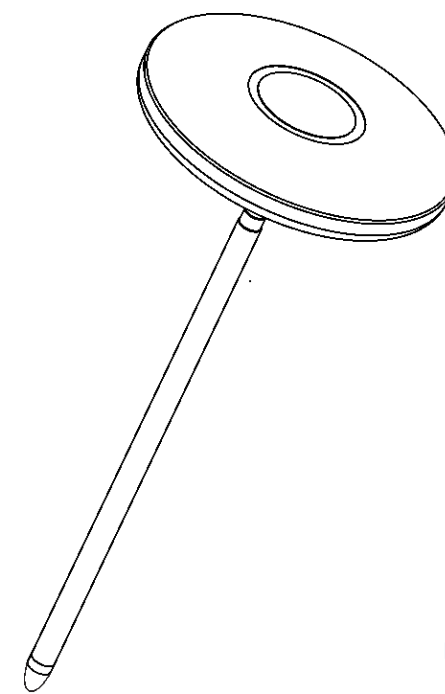
For more warranty information or additional questions, please feel free to visit our official website: [www.i-growled.com](http://www.i-growled.com) or contact us via E-mail: [info@i-growled.com](mailto:info@i-growled.com)



Made in China



GrowLED®



Work with alexa

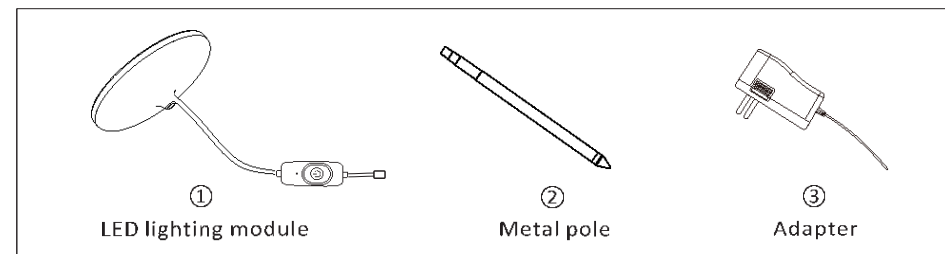
Umbrella Plus WIFI

## IMPORTANT SAFETY INSTRUCTIONS

### Read all instructions before using this GrowLED indoor garden.

- WARNING- to reduce risk of burns, fire, electric shock, or injury to people.** Unplug from outlet before assembling, taking off or cleaning parts.
- Please take proper precautions when operating the GrowLED indoor garden near or by people requiring close supervision, children included.
- This device's safety is guaranteed only if these instructions are followed properly, therefore they should be kept for any future maintenance.
- Never operate GrowLED indoor garden if it has a damaged cord or plug. If the cord or plug has been dropped, damaged or in water before, it may not working. If this happens, please contact customer service for assistance.
- The cord or electrical components should not be exposed to any liquid or detergent.
- Clean the indoor garden by using a damp, soft and clean cloth.
- Do not use outdoors.
- Do not allow water to touch hot LED lighting module.
- Keep indoor garden away from any direct sources of heat (stove, furnace vents etc.).
- Do not place or submerge cord, plug, LED lighting panel in water or other liquid to clean it.
- Electrical wiring must be in accordance with local regulations by qualified technicians.
- This product is for household and residential use only.** It is not approved for commercial applications.
- If the cord you received is damaged, it must be replaced by manufacturer in order to avoid hazard.
- Do not use GrowLED indoor garden for other intended use.
- Any changed or modifications to this product are not expressly approved by the party responsible for compliance could void the user's authority to operate the equipment.

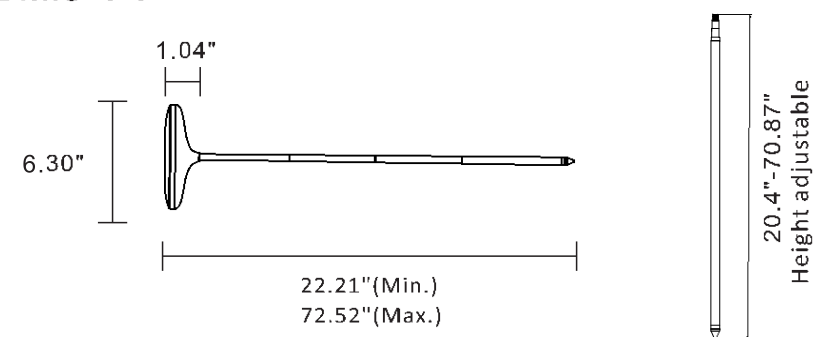
## Included In Package



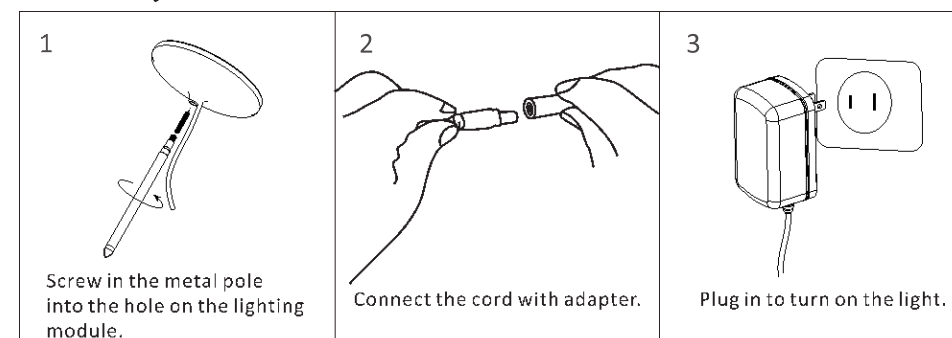
## Parameter

Model No.	Power	Beam angle	Operating voltage
GLMGUP14WAW	14W	120°	100-240V AC
Life time	Operation temperature	IP Rate	Installed size (MIN.)
25000h	-20°C~40°C	IP20	6.30"X6.30"X22.21"

## Dimension



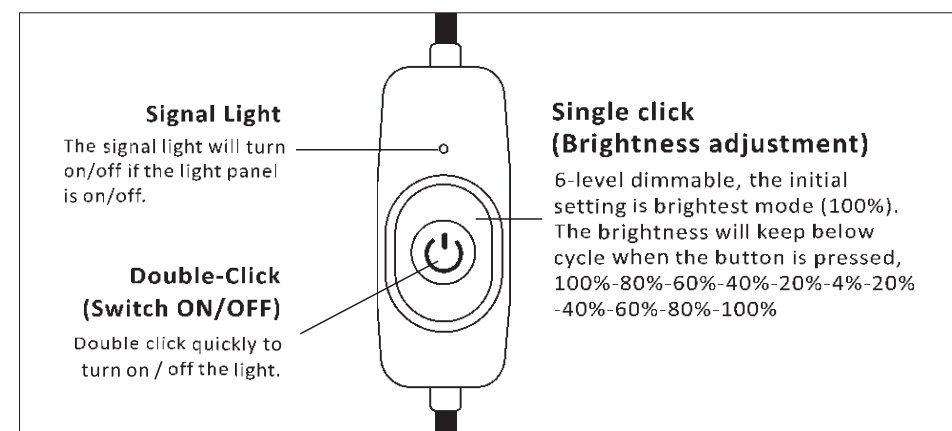
## Assembly Guide



**Note:** After plugging in, the light will keep on if you don't use the switch or app to control the timer. Please check what the switch and app can control in next page.

## Controller

(Only control brightness, ON/OFF)



2

## APP

(Control brightness, ON/OFF, online timer and countdown timer)

### 1. What you need to get started

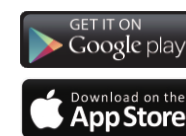
You require the following things before it is possible to use Alexa to control your smart device:

- 1.1. An Echo device and an Amazon account
- 1.2. Smart Life app and a related account
- 1.3. Network router
- 1.4. Smart device

### 2. Smart Life App Quick Guide

#### 2.1. Download the app:

Search for "Smart Life" in the App Store/Google Play or scan the QR-code below. The app is also available at

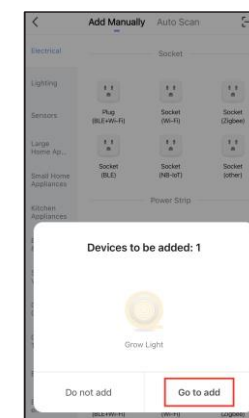
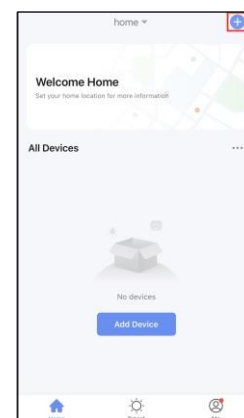


If you use the app for the first time, it is necessary to create a user account. Tap "Register" and follow the given instructions. If you already have an account, click the "Login" button.

#### 2.2. Device Network Configuration

2.2.1. Open the Smart Life App "Home" page, long press the controller for 5 seconds and above until the light flashes.

2.2.2. Click the "+" on the upper right corner of the page, a new device page will pop up and then click the "Go to add" button on the page to start the configuration.

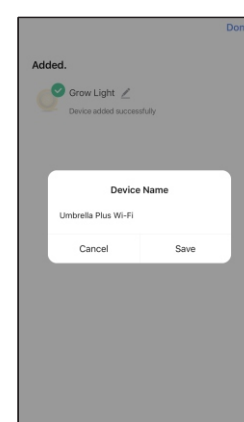
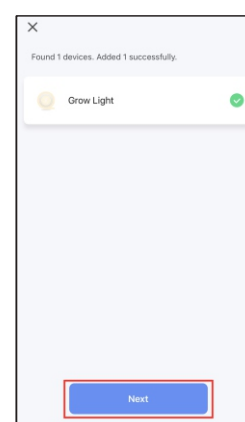


#### 2.3. Network Access Settings

2.3.1. Input the WiFi account and password.

2.3.2. You can see the light on the "Home" page after setting up successfully.

**Note:** It is recommended to edit the name of the light.



#### 2.4. Lighting Settings

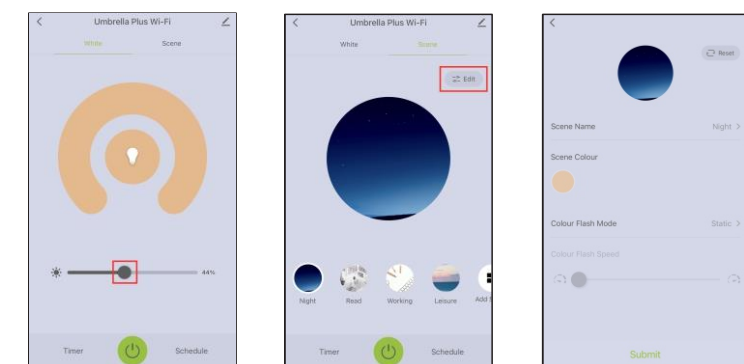
2.4.1. Click on the symbol of the switch which you can turn on/off the light. If the light is turned off, the brightness adjustment option will not be displayed. Tap the green switch to turn on the light and click the light's icon to have access to all settings.

3



2.4.2. In the "White" lighting mode the light's color is white. The brightness can be adjusted once you move the slider.

2.4.3. The "Scene" Mode offers various preset lighting modes. Some of them can be adjusted, you can also click "Edit" to set your own mode.



#### 2.5. "Schedule" Settings

On the schedule page you can add multiple timer switches.

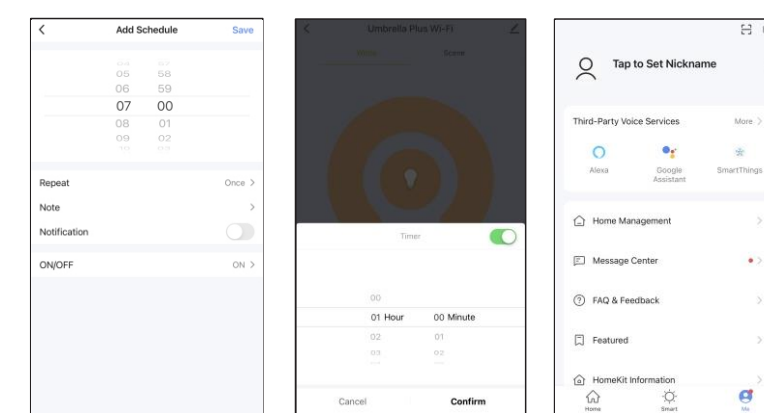
#### 2.6. "Timer" Settings

On the timer page you can add countdown timer.

#### 2.7. "Me" Page

Click the "Me" button in the lower right corner of the light control page to enter the "Me" page:

- 2.7.1. Tap to Set Nickname
- 2.7.2. Third-party Voice Services
- 2.7.3. Home Management
- 2.7.4. Message Center
- 2.7.5. FAQ & Feedback
- 2.7.6. Featured
- 2.7.7. HomeKit Information



#### 2.8. Bind your app account to your Amazon account

Click the "Me" button in the lower right corner of the light control page to enter the "Me" page, and click the ALEXA logo on Third-party Voice Services part. Then click "Sign In With Amazon" to input your Amazon account and password to bind your Smart Life app account to your Amazon account.

4