



# Instruction Manual

EOC590 Sewing Machine



Please read this manual carefully  
before using to ensure the device is used safely and effectively

# IMPORTANT SAFETY INSTRUCTIONS

Important-Please read these instruction fully before starting assembly

When using an electrical appliance, basic safety precautions should always be followed, including the following.

Read all instructions before using this sewing machine.



## **DANGER**

**To reduce the risk of electric shock:**

1. Do not allow to be used as a toy. Close attention is necessary when this sewing machine is used by or near children.
2. This appliance can be used by children aged from 8 years and above and persons with reduced physical, sensory or mental capabilities or lack of experience and knowledge if they have been given supervision or instruction concerning use of the appliance in a safe way and understand the hazards involved. Children shall not play with the appliance. Cleaning and user maintenance shall not be made by children without supervision.
3. Use this sewing machine only for its intended use as described in this manual. Use only attachments recommended by the manufacturer as contained in this manual.
4. Never operate this sewing machine if it has a damaged cord or plug, if it is not working properly, if it has been dropped or damaged, or dropped into water. Return the sewing machine to the nearest authorized dealer or service center for examination, repair, electrical or mechanical adjustment.
5. Never operate the sewing machine with any air openings blocked. Keep ventilation openings of the sewing machine and foot control free from the accumulation of lint, dust, and loose cloth.
6. Never drop or insert any object into any opening.
7. Do not use outdoors.
8. Do not operate where aerosol (spray) products are being used or where oxygen is being administered.
9. To disconnect, turn switch to the off ("O") position, then remove plug from outlet.
10. Do not unplug by pulling on cord. To unplug, grasp the plug, not the cord.
11. Keep fingers away from all moving parts. Special care is required around the sewing machine needle.
12. Never sew with a damaged needle plate as this can cause needle to break.
13. Do not use bent needles.
14. Do not pull or push fabric while stitching. It may deflect the needle causing it to break.
15. Switch the sewing machine off ("O") when making any adjustments in the needle area, such as threading needle, changing needle, threading bobbin, or changing presser foot, etc.
16. Always unplug sewing machine from the electrical outlet when removing covers, lubricating, or when making any other user servicing adjustments mentioned in the instruction manual.
17. Attention the following to avoid injury:
  - switch off or unplug the appliance when leaving it unattended;
  - unplug the appliance before carrying out maintenance.



## **CAUTION**

Moving parts-To reduce risk of injury, switch off before servicing. Close cover before operating machine .

## SAVE THESE INSTRUCTIONS

This product is for household use, or equivalent.

**This appliance complies with EMC Directive 2014/30/EU covering the electromagnetic compatibility.**



Please note that on disposal, this product must be safely recycled in accordance with relevant National legislation relating to electrical/ electronic products. If in doubt please contact your retailer for guidance.

## Know Your Machine

Name of parts -----	2
Accessories-----	2

## Preparing To Sew

Connecting machine to power suppl-----	3
Reverse sewing lever -----	3
Sewing table -----	4
Presser foot arm-----	4
Changing the presser foot-----	5
Changing the needle -----	6
Thread and needle chart -----	7
Stitch selector and indicator-----	7
Bobbin winding -----	8
Threading the upper thread -----	9
Threading the bobbin case -----	10
Drawing up the bobbin thread-----	11
Seam guide line -----	11
Thread tension -----	12

## Basic Sewing

Selecting stitch sewing -----	13
Changing sewing directions-----	14
Reverse sewing -----	14
Basic Z-stitch -----	15
Finish sewing-----	16

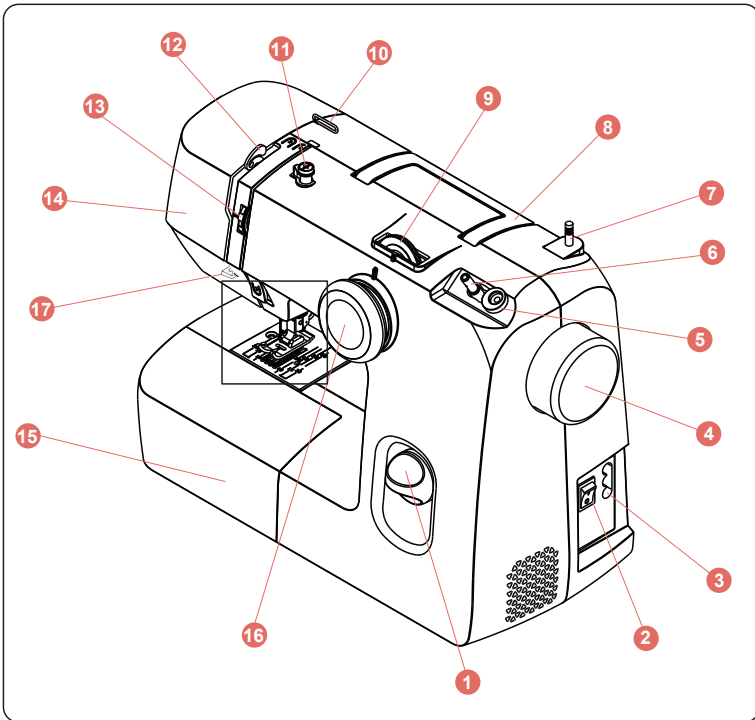
## Utility Sewing

Overlock stitches -----	17
Three-point Z-seam -----	18
Blind seam -----	19
Decorative stitch -----	20
Sewing buttonholes -----	21-23

## Care Of Your Machine

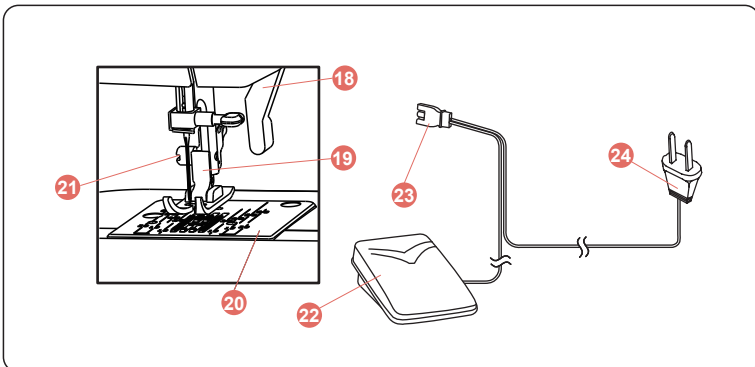
Cleaning shuttle race-----	24-25
Cleaning the feed dogs-----	25
Oiling the machine -----	26
Troubleshooting-----	27
Specification -----	28

# Know Your Machine



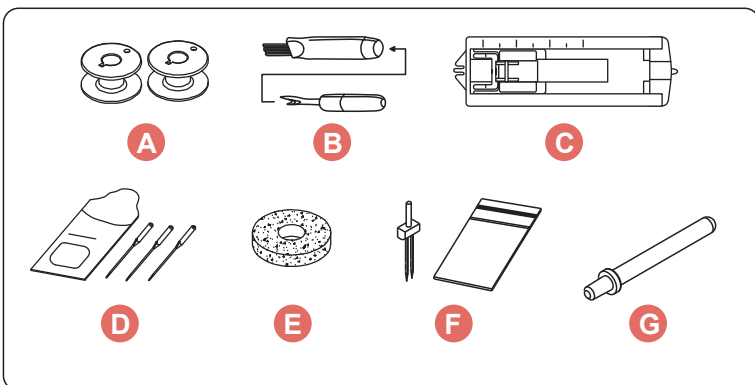
## Name of parts

1. Reverse stitch lever
2. Power switch
3. Machine socket
4. Handwheel
5. Bobbin winder stopper
6. Bobbin winder spindle
7. Spool pin
8. Carry handle
9. Stitch length adjustor
10. Thread guide
11. Bobbin winder thread guide
12. Thread take-up lever
13. Thread tension dial
14. Face plate
15. Sewing table & accessory box
16. Stitch selector dial
17. Thread cutter

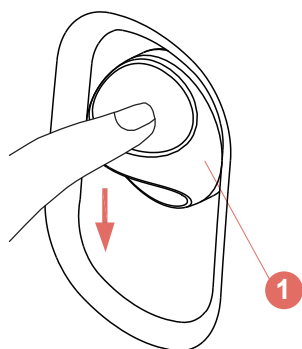
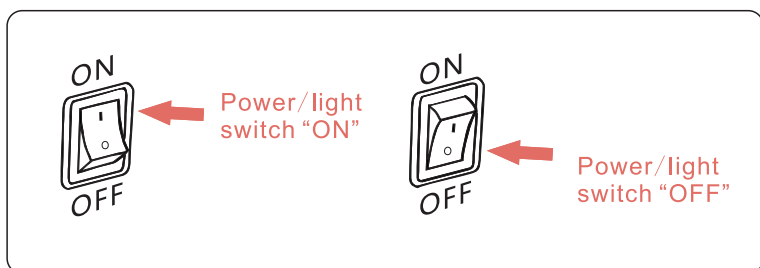
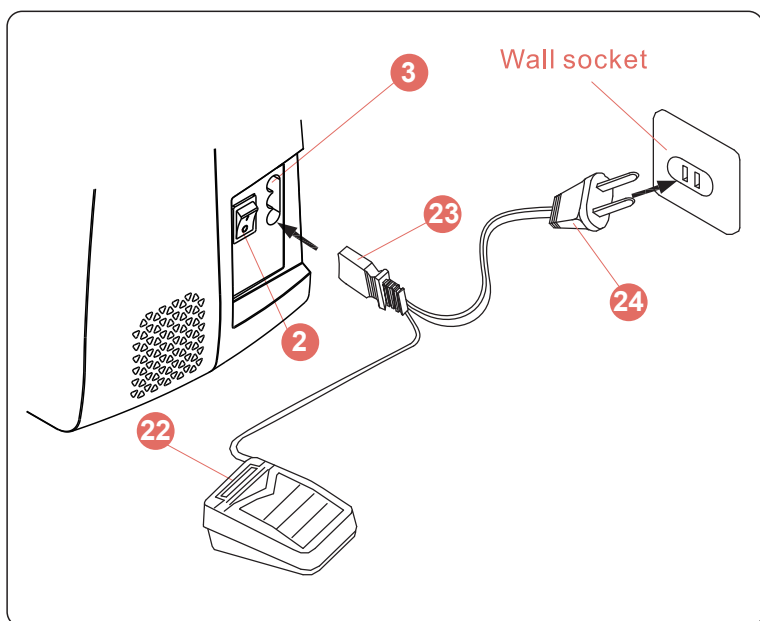


## Accessories

- A. Bobbin 3 pcs
- B. Ripper/Brush
- C. Buttonhole foot
- D. Needle set
- E. Felt pads
- F. Twin needle (optional)
- G. Auxiliary spool pin (optional)



# Preparing To Sew



## Connecting the machine to power supply

### Note:

- Please read the important safety instructions before use.
- Before connecting to the mains make sure that the rated voltage show on the rear panel matches your mains voltage supply.

a: Turn off the Power Switch **2**.

b: Insert the Machine Plug **23** into the Machine Socket **3**.

c: Insert the Power Supply Plug **24** into the Wall socket.

d: Turn on the Power Switch **2** to turn on the power and the sewing light will also automatically turn on.

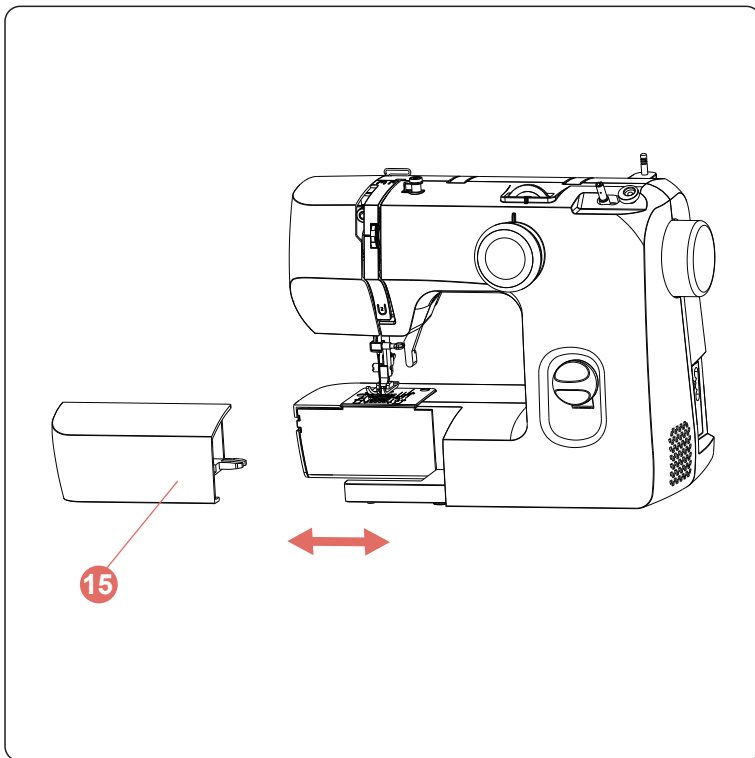
**CAUTION:** Ensure your fingers are free from the needle and presser foot area and do not press the Foot Controller **22** by mistake which would automatically start the sewing machine.

## Reverse sewing lever

Keep pressing reverse stitch lever **1** to start reverse sewing.

Reverse stitching can only be used for straight stitches.

# Preparing To Sew



## Accessory box

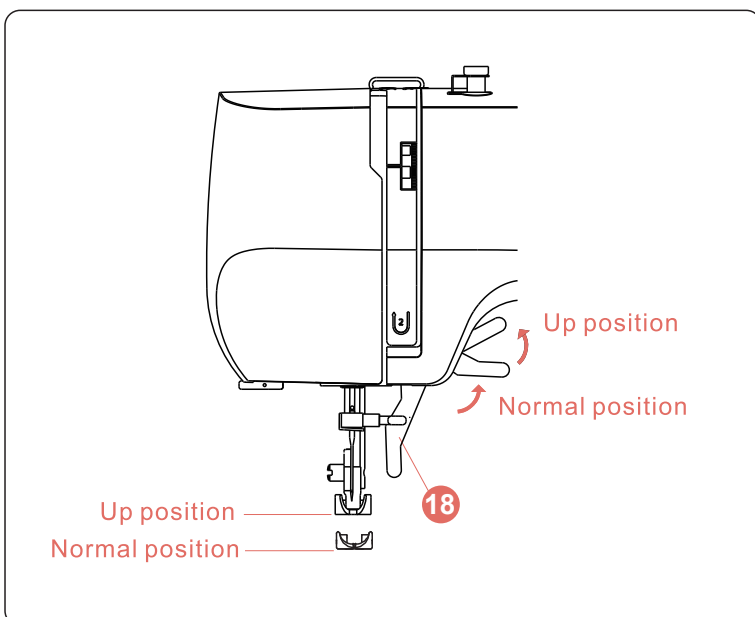
### Auxiliary function

The Accessory box **15** provides added sewing surface and can be easily removed for free arm sewing. Free-arm sewing is used when sewing tubular and hard-to-reach areas on a garment such as the hem of pant legs or sleeves.

- To remove, hold the end of the sewing table and pull away from the sewing machine.
- To replace, push the sewing table until it fits into the machine.

### Accessory storage

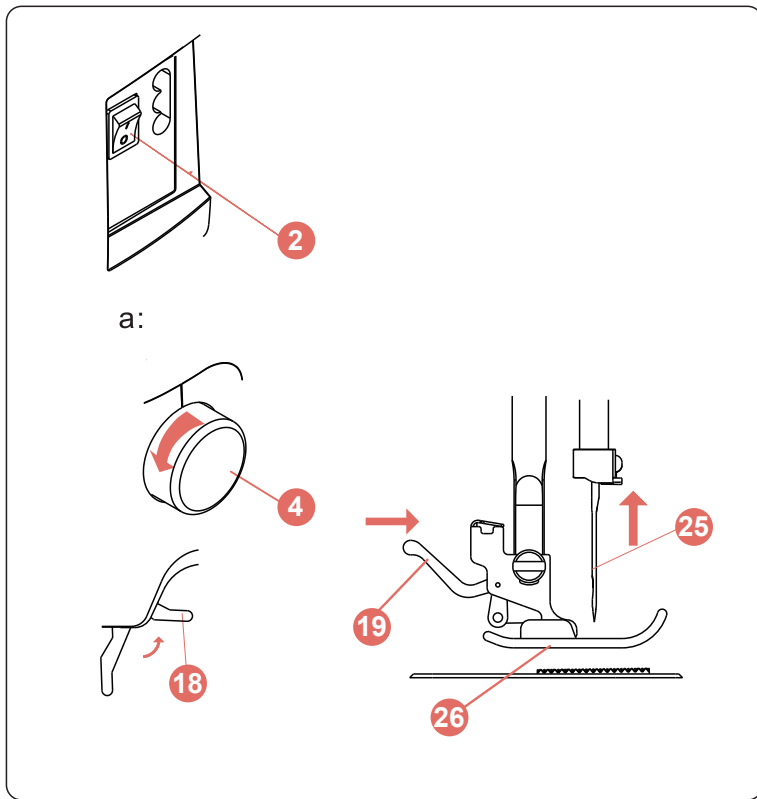
Sewing accessories are conveniently stored inside the accessory box **15**.



## Presser foot arm

The Presser Foot Arm **18** raises and lowers the presser foot.

# Preparing To Sew



## Changing the presser foot

- 25 Needle
- 26 Presser foot
- 27 Groove
- 28 Pin

a: To remove

**! Note:**

Ensure the Power Switch 2 is turned off when changing the presser foot.

Turn the Hand Wheel 4 toward you to raise the Needle 25 to its highest position.

Raise the Presser foot arm 18.

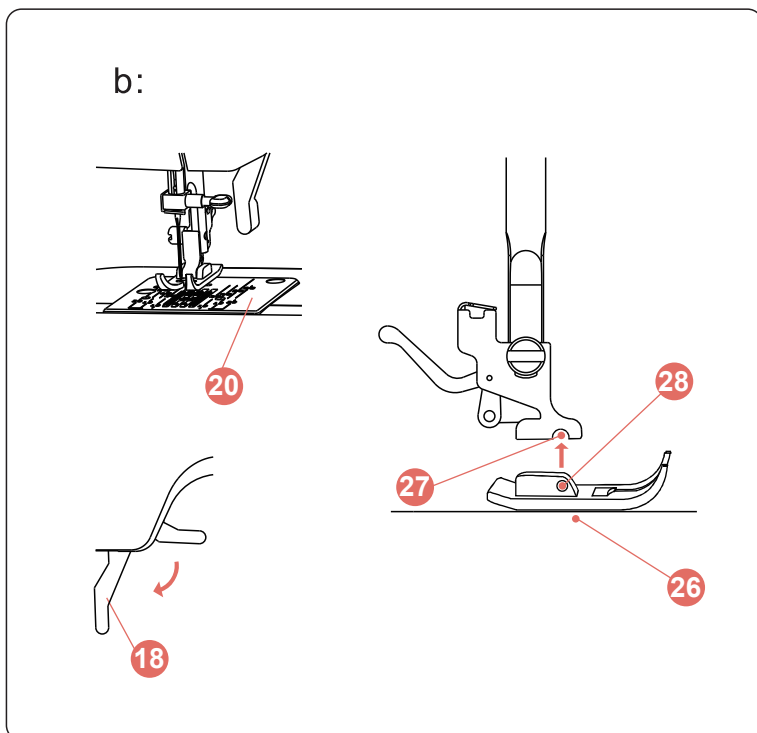
Press the Press Foot Holder 19 on the back of the foot holder. the Presser Foot 26 will release.

b: To attach

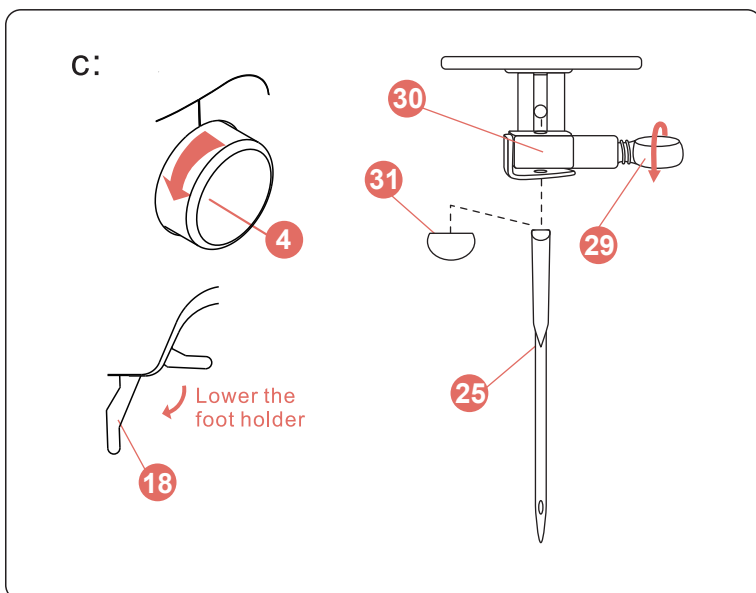
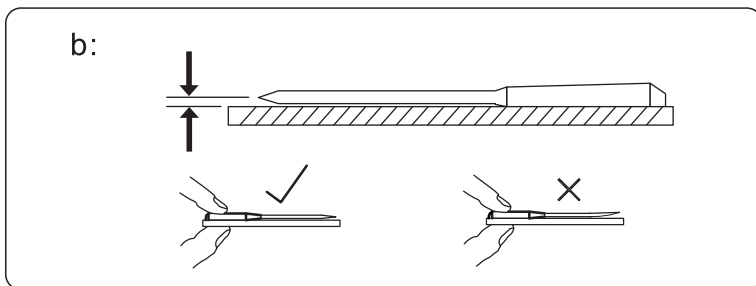
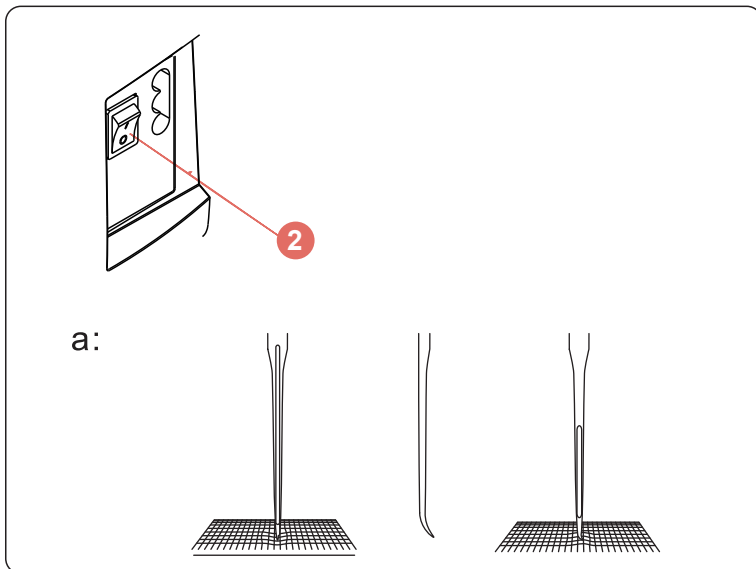
Place the Presser Foot 26 on the Needle Plate 20 and align the Pin 28 on the foot with the Groove 27 of the foot holder. Lower the foot holder to lock the foot in place.

**! Note:**

- Make sure the Presser foot 26 is secure before use.
- Make sure put down the Presser Foot Arm 18 before start sewing.



# Preparing To Sew



**Note:**

The needle must always be straight and sharp for smooth sewing.

## Changing the needle

**Note:**

Ensure the Power Switch **2** is turned off when changing the needle.

- 29** Needle clamp screw
- 30** Needle clamp
- 31** Flat side

Placing a scrap of fabric under the presser foot and lowering the presser foot makes it easier to change the needle and will preclude dropping the needle into the needle plate slot.

a: replace the needle if it is:

- Bent
- Blunt
- Point is damaged

b: To check if a needle is bent. Place the Flat Side **31** of the needle onto something flat (e.g. needle plate or glass). The gap between the needle and the flat surface should be consistent.

Never use a bent or blunt needle.

c: Raise the Needle to highest position by turning the Hand Wheel **4**, toward you, and lowering the Presser Foot arm **18**.

Loosen the Needle Clamp Screw **29** by turning it counterclockwise.

To Remove the Needle **25** from the Needle Clamp **30**.

Insert a new needle into the Needle Clamp **30** with the Flat Side **31** to the rear. Then tighten the Needle Clamp Screw **29**.

Tighten snugly, but do not over tighten.



# Preparing To Sew

Fabric		Thread	Needle Size
thin fabric	silk, voile, lawn, organdie, georgette, warp fabric	80 to 100 fine silk thread 80 to 100 fine cotton thread 80 to 100 fine synthetic cotton covered polyester.	9(65) or 11(75)
medium fabric	flax, cotton goods, pique, serge, double knitting fabric, fine cotton goods	50 silk thread 50 to 80 cotton thread 50 to 80 synthetic cotton covered polyester.	11(75) or 14(90)
thick fabric	jean, drill, gaberdine, coated fabric, wool, canvas	40 silk thread 40 to 50 cotton thread 40 to 50 synthetic cotton covered polyester.	14(90) or 16(100)

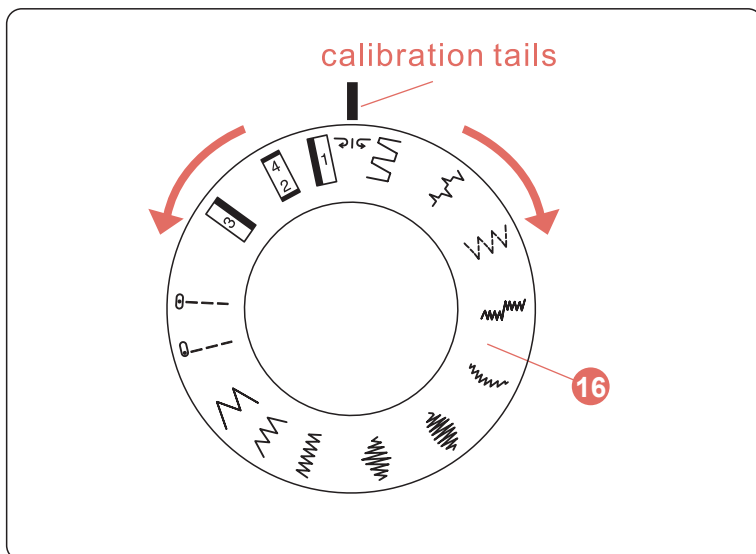
## Thread and needle chart

**Note:**

Never use a bent or dull needle.

Using the standard needles. The size of your needle should match the size of the thread and both should match the fabric type and weight.

For normal sewing, the same size and type of thread should be used in the bobbin as on the upper part of the machine.



## Stitch selector and indicator

To select a stitch, be sure needle is out of fabric at its highest position.

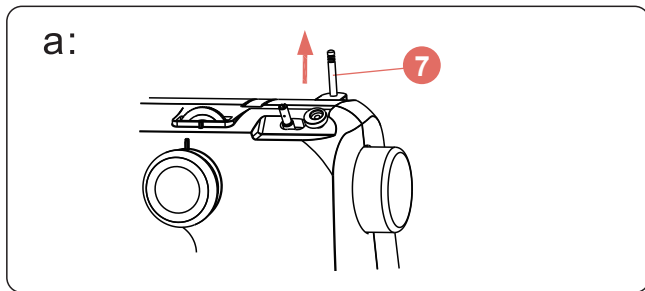
Turn the Stitch Selector dial until the required stitch is indicated by symbol.

**Note:**

The dial can not repeat rotating 360°, Please reverse rotate in the position shown arrow.

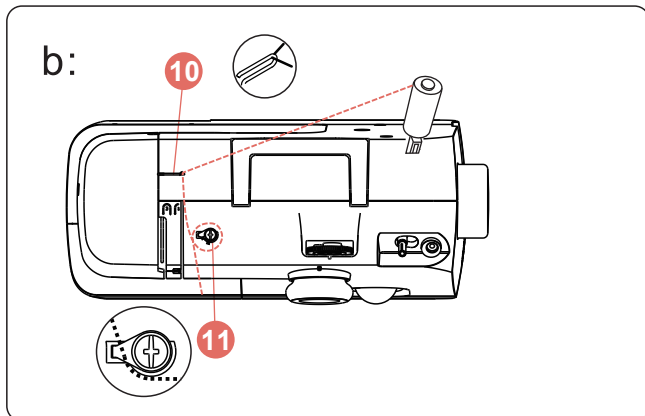
Please keep the calibration tails and the pattern on line.

# Preparing To Sew



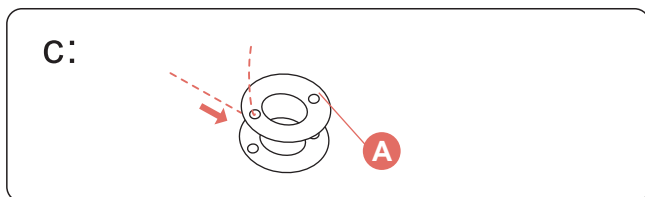
## Bobbin winding

a: Spool Pin **7** is used for holding the spool of thread in order to feed the thread to the machine. To use, pull the spool pin out and place the spool of thread over it. To store, remove the spool of thread and push back.



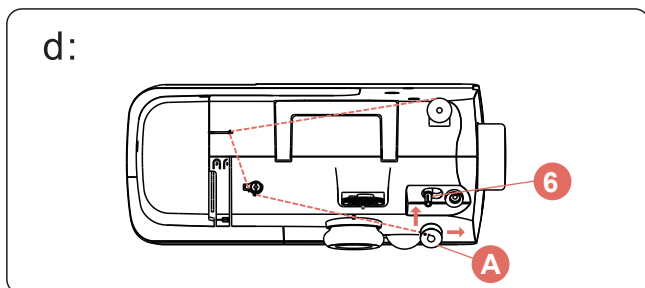
b: Place the spool of thread onto the spool pin.

Pull the thread from the spool and guide it around the Thread guide **10** and Bobbin winder Thread guide **11**.



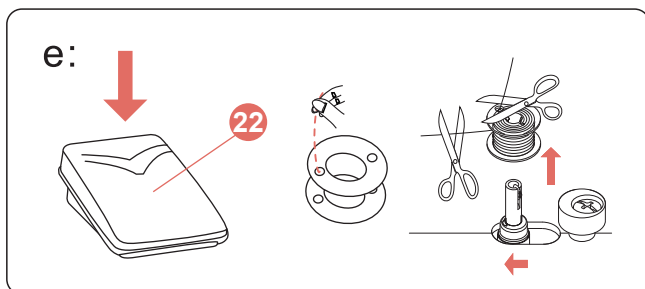
c: Insert the thread through one of the holes in the Bobbin **A** from the inside to the outside.

Wind the thread a few times by hand around the empty bobbin in a clockwise direction.



d: Place the Bobbin **A** on the Bobbin Winder Spindle **6** and push it the right to the bobbin winding position.

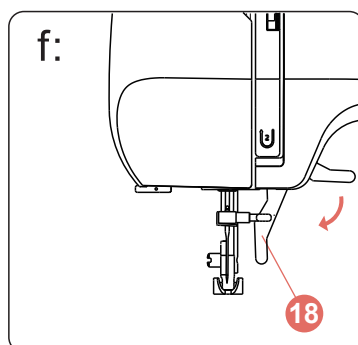
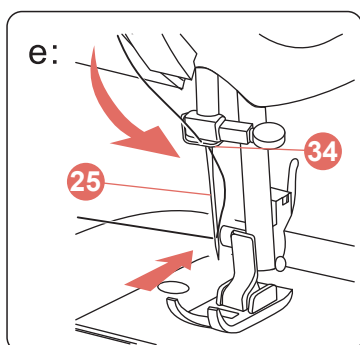
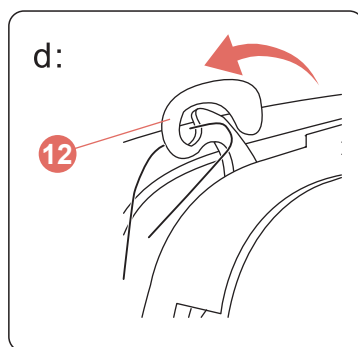
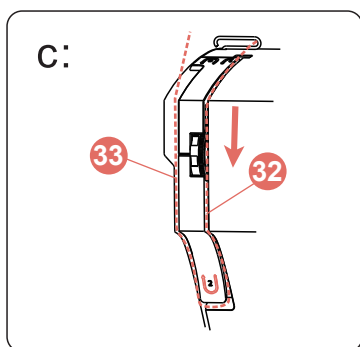
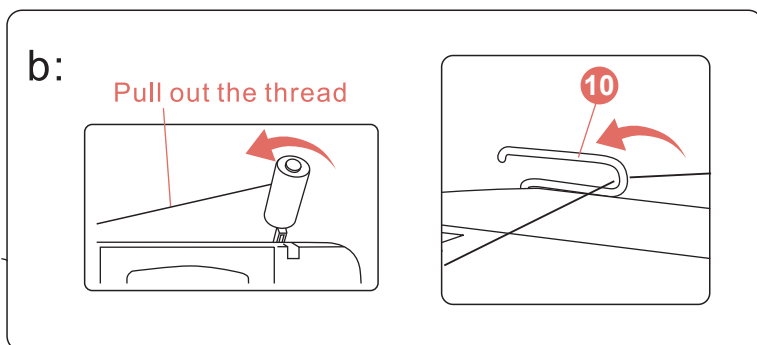
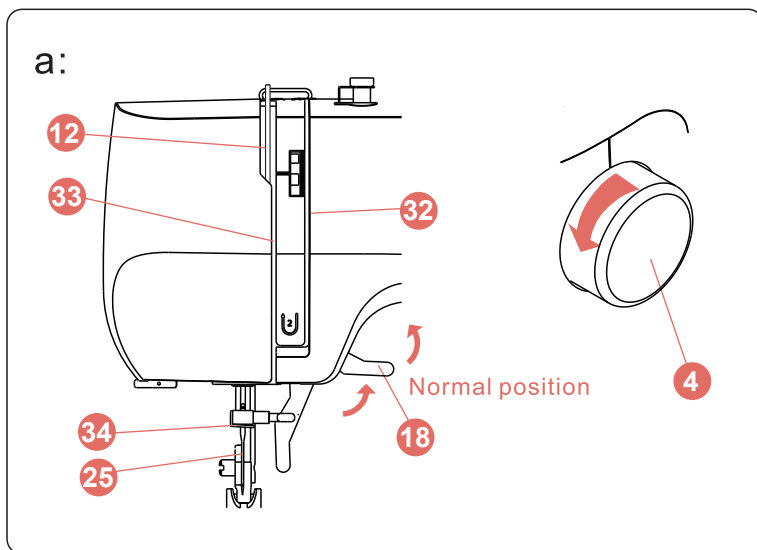
e: Turn on the power switch. Hold the thread with the right hand. Press the Foot Controller **22** gently, the bobbin will stop winding when it is full.



**! Note:**

Do not forget to push back the Bobbin winder spindle to the left, then pull out the bobbin.

# Preparing To Sew



## Threading the upper thread

**⚡ Caution:**

We recommend you remove from the mains power before completing all these procedures.

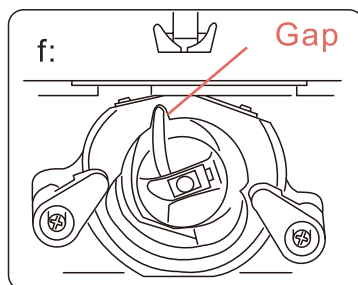
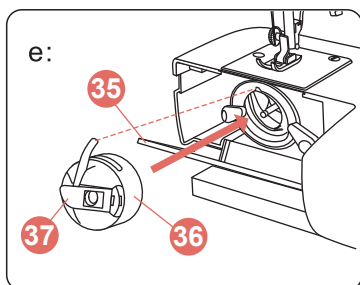
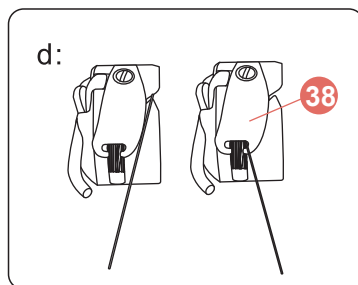
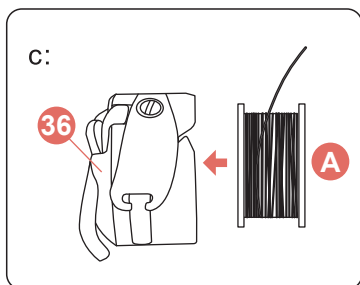
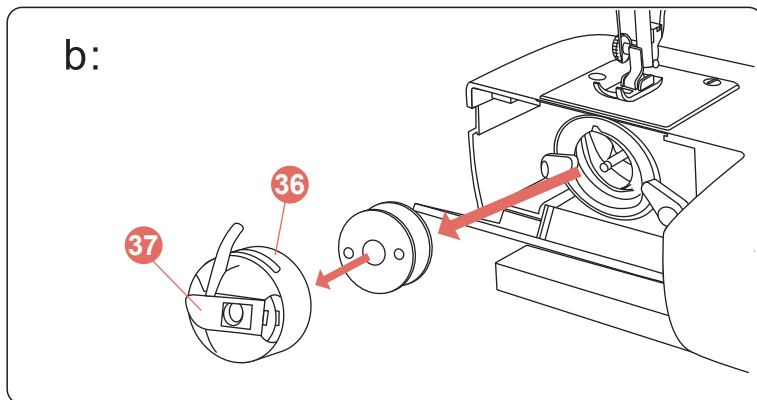
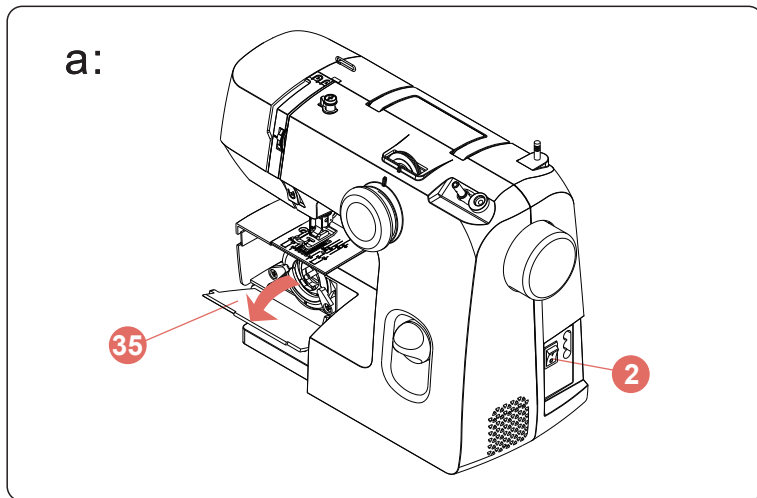
- 32 Tension area
- 33 Check spring holder
- 34 Thread guide

- a: Raise the Thread Take-up Lever its highest position by turning the Hand Wheel 4 towards you. Raise the Presser Foot arm 18 .
- b: Pull out the spool pin, and put the thread spool onto it. Carefully pull the thread from the upper spool through the Thread guide 10 .
- c: Hold the end of the thread and carefully draw the thread down and up around the Check Spring Holder 33 .
- d: Carefully draw the thread up and through the Thread Take-up Lever 12 threading from right to left.
- e: Carefully pull the thread down and pass it into the Thread Guide 34 . Then thread the needle front to back. Leave about 10cm (4 inches) of thread behind the needle. Put the thread under the presser foot
- f: Put down the Presser Foot arm 18 so that you can resume sewing.

**⚠ Note:**

Please follow these steps carefully, if you thread the machine incorrectly it will not sew properly.

# Preparing To Sew



## Threading the bobbin case

 **Caution:**

Ensure the Power Switch **2** is turned off when removing or inserting the bobbin case.

- 35** Shuttle cover
- 36** Bobbin case
- 37** Latch
- 38** Tension spring

a: Remove the sewing table from the machine by pulling it to the left. Open the Shuttle Cove **35** by pulling down the tab on the left of the cover. Raise the needle to its Highest position by rotating the hand wheel towards you.

b: To remove the Bobbin Case from the shuttle pull back the Latch **37** on the bobbin case and pull straight out of the shuttle.

c: Place a Bobbin **A** in the Bobbin Case **36** making sure the thread feeds clockwise from the bobbin.

d: Draw the thread through the slot in the case. Continue to draw the thread under the Tension Spring **38** and through the opening. Pull out about 4" (10cm) of thread.

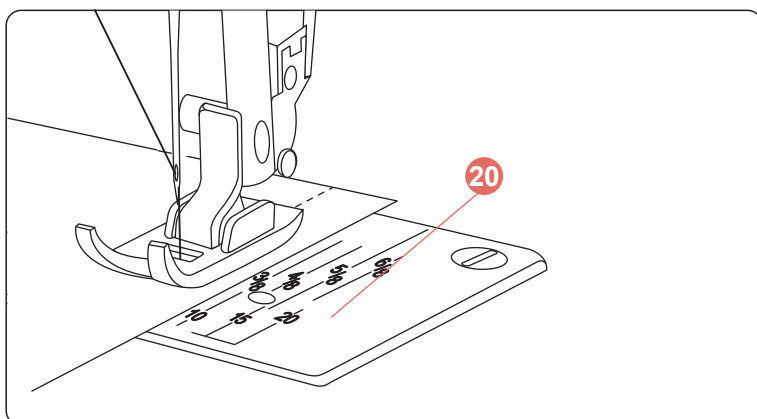
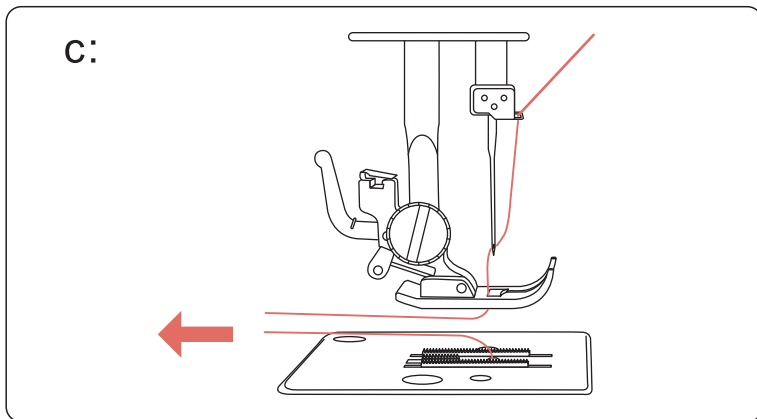
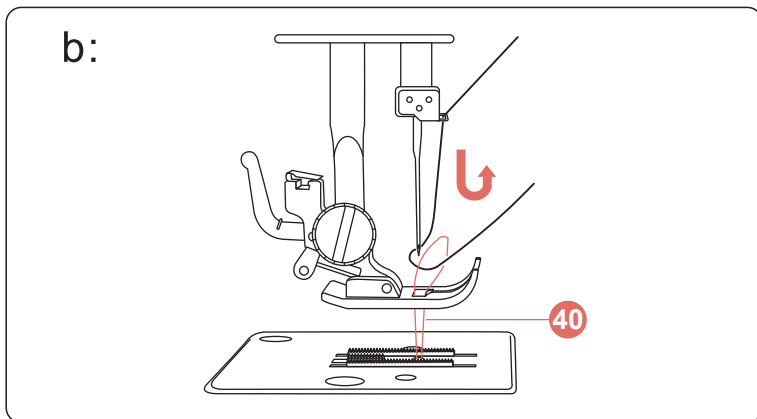
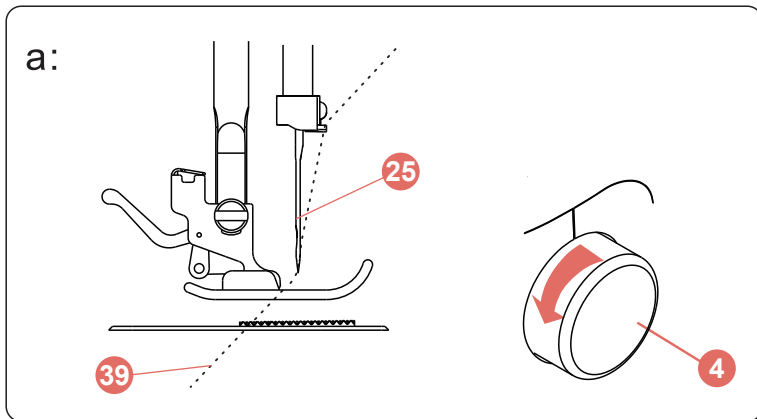
e: Raise the needle by turning the hand wheel towards you. Open the Shuttle Cover **35**. Hold the Bobbin Case **36** by the hinged Latch **37**. Insert the bobbin case fully into the shuttle race and release the latch.

f: Make sure that the latch located into the notch at top of the shuttle, closed the Shuttle Cover **35**.

 **Note:**

When you insert the bobbin case. You must push the bobbin case as far as it goes, and you can hear the "Click".

# Preparing To Sew



## Drawing up the bobbin thread

**Note:**

- Make sure you have correctly completed page 9 before starting this step.
- Must rotate the hand wheel 4 anticlockwise, toward you. Otherwise you can not draw the bobbin thread.

39 Needle thread

40 Bobbin thread

a: Raise the presser foot. Hold the Needle thread 39 lightly with your left hand and rotate the hand wheel anticlockwise, toward you, for one complete turn.

b: Bring the Bobbin Thread 40 up by pulling the needle thread.

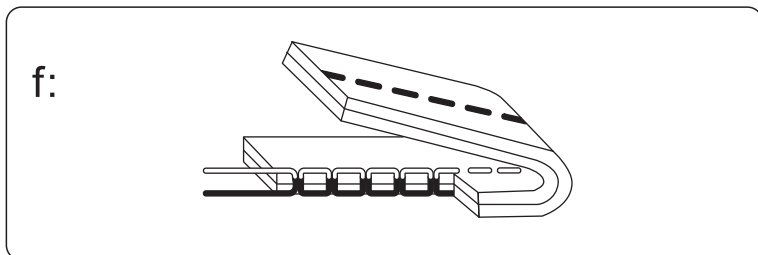
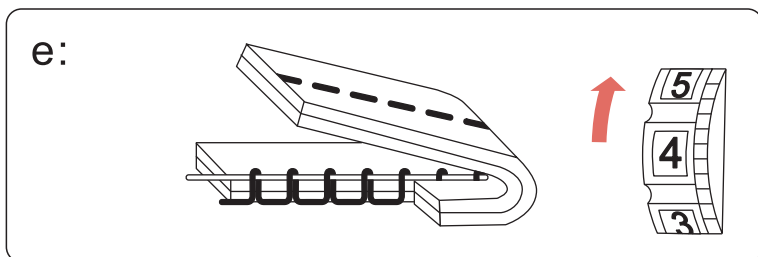
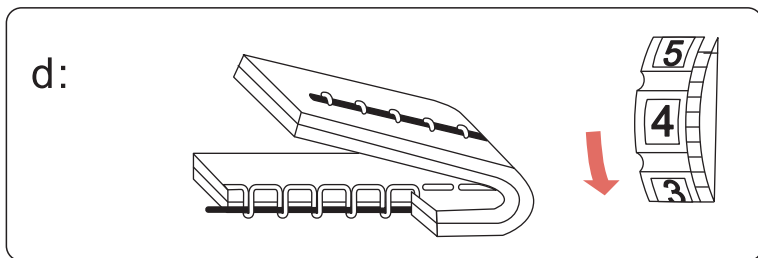
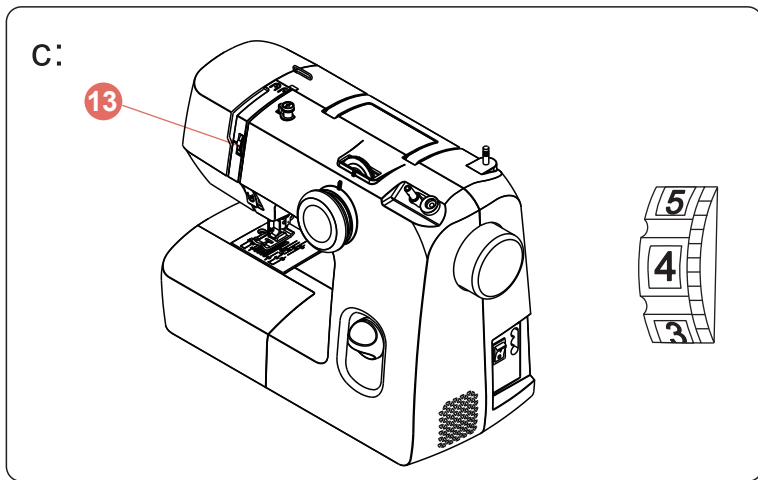
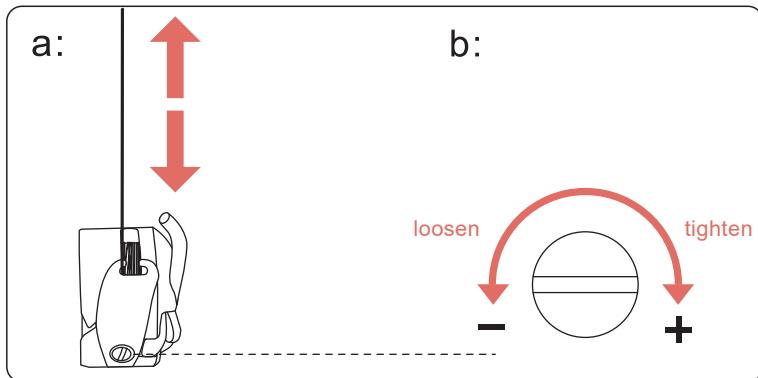
c: Pull both thread 6" (15cm) under and behind the presser foot.

## Seam guide line

The number on the Needle Plate 20 indicate the distance between the center needle position and seam guide line.

The number in the front of the needle plate are in millimeters and the ones in the back are in inches.

# Preparing To Sew



## Thread tension

**Note:**

The bobbin thread tension has been adjusted at the factory and readjustment is not usually required.

In order to obtain better zigzag stitches, the upper thread tension should be slightly weaker than the bobbin thread tension.

### Lower thread tension:

a: To set the bobbin thread tension, remove the bobbin case with the bobbin from the machine and hold the bobbin case suspended by the thread.

Holding the thread by hand, the bobbin case with the bobbin hangs down naturally. Shake it once or twice.

If the tension is correct, the thread will unwind by about an inch or two.

If the tension is too tight, it will not unwind. If the tension is too loose, the thread will unwind more than two inches.

b: Turn clockwise to tighten the tension, and turn counterclockwise to loosen the tension.

### Upper thread tension:

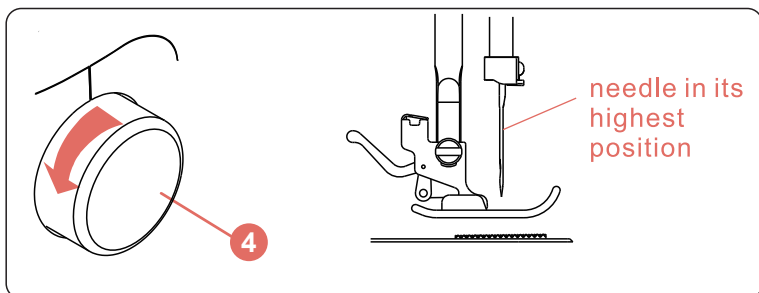
c: Turn Thread Tension dial **13** to adjust the tension. Standard thread tension setting is "3-4".

d: To tight the tension, turn the dial up to a higher number.

e: To loosen the tension, turn the dial to a lower number.

f: Normal thread tension.

# Basic Sewing

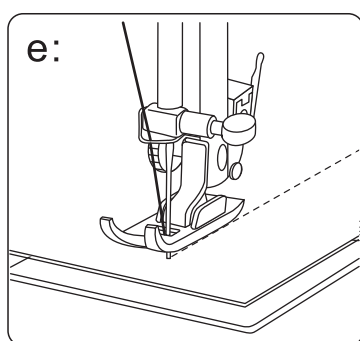
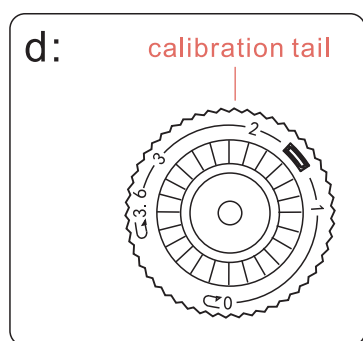
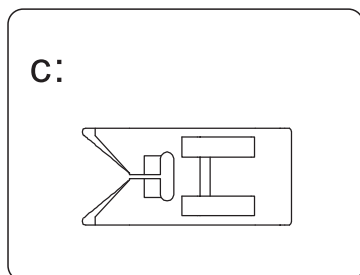
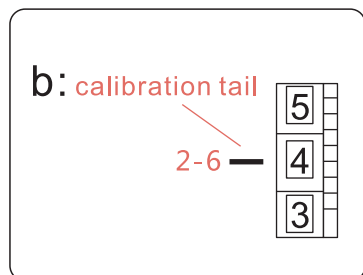
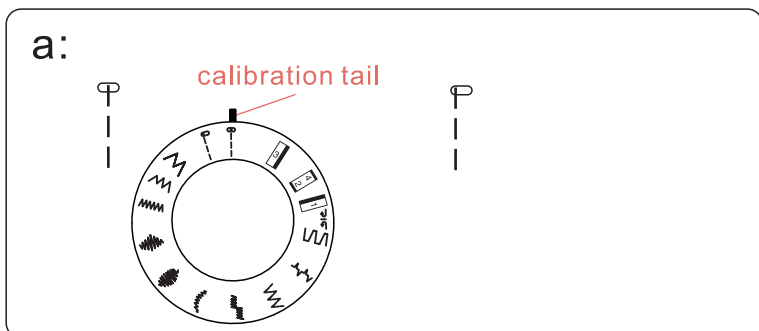


**Note:**

The dial can not repeat rotating 360°, Please reverse rotate from the arrow position arrow.

Turn the Hand Wheel ④ anti-clockwise to ensure the needle is higher than needle plate and fabric (keep the needle in its highest position) before rotating the stitch selector or after sewing. Otherwise the needle will be bent.

When selecting a pattern, please keep the pattern on knob aligned with the calibration tail.



## Selecting stitch sewing

- a. Stitch selector dial: “ | ” or “ | ”
- b. Thread tension dial: 2-6
- c. Presser foot: zigzag presser
- d. Stitch length adjustor: 0-3.6

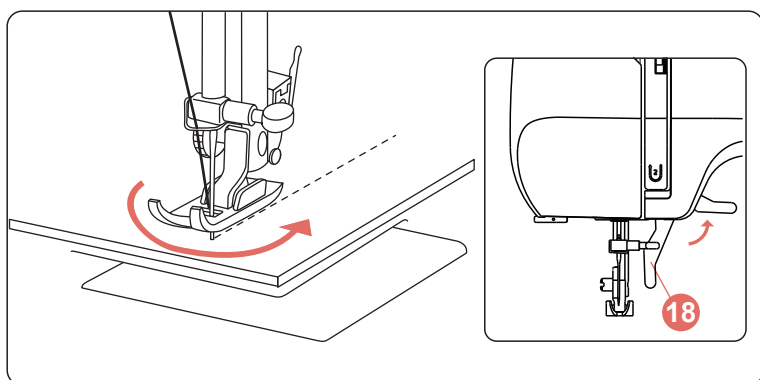
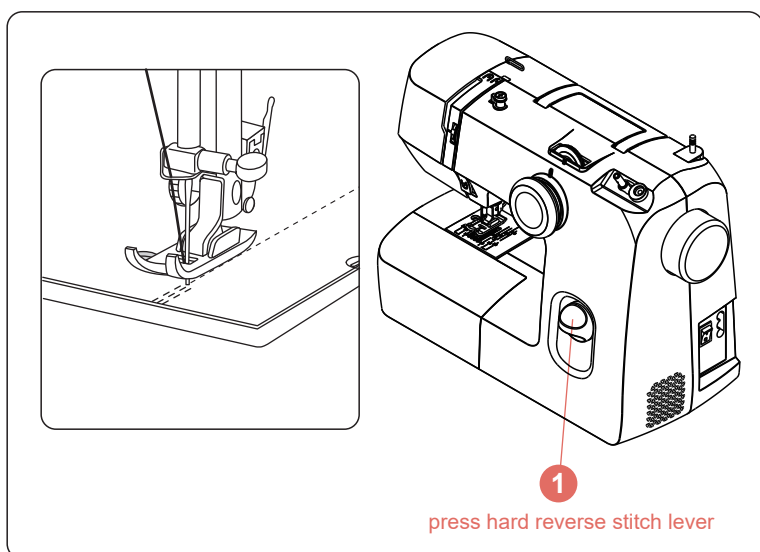
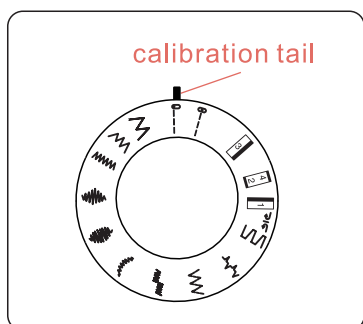
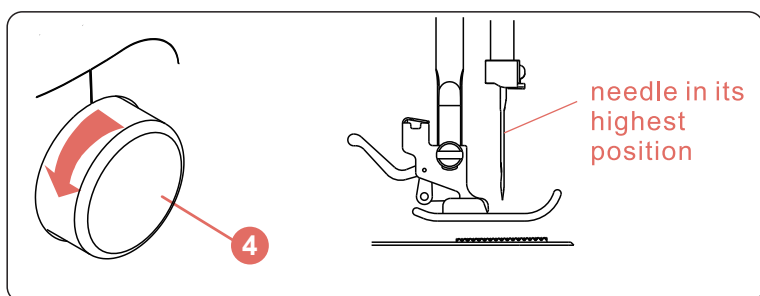
Lift the presser foot and align the fabric with the guide on needle plate. Pull the needle thread and the bobbin thread to back and lower the presser foot. Slowly press the foot controller and start sewing along the guide.

Stitches ( Pic. e )

**Note:**

You can select the suitable stitch length for most fabric. The higher the number, the longer the stitch length.

# Basic Sewing



## Note:

The dial can not repeat rotating 360°, Please reverse rotate from the arrow position arrow.

Turn the Hand Wheel **4** anti-clockwise to ensure the needle is higher than needle plate and fabric (keep the needle in its highest position) before rotating the stitch selector or after sewing. Otherwise the needle will be bent.

When selecting a pattern, please keep the pattern on knob aligned with the calibration tail.

## Reverse sewing

Reverse sewing is used for locking the end of seams and where reinforcement is need.

At the end of a seam, keep pressing hard on the Reverse stitch lever **1** and touch the foot controller lightly. Sew a few reverse stitches.

Reverse stitching can only be used for straight stitches.

Release the reverse sewing lever and the machine will sew forward again.

## Changing sewing directions

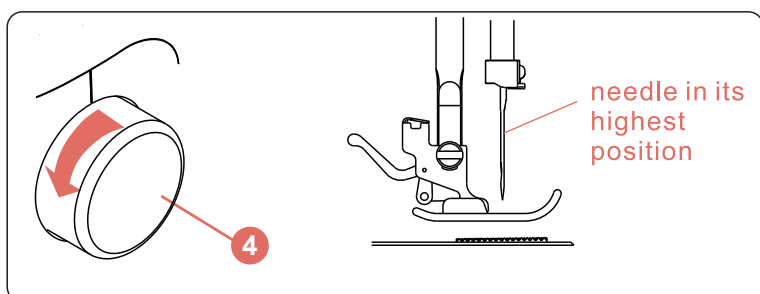
Stop the machine at the point where you wish to change directions with the needle still in the fabric.

Raise the presser foot and turn the fabric to line up to its new direction using the needle as a turning point.

Lower the presser foot and continue sewing in the new direction.



# Basic Sewing

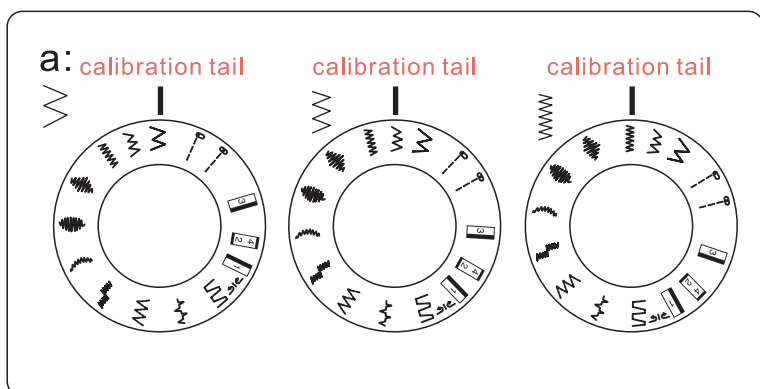


**Note:**

The dial can not repeat rotating 360°, Please reverse rotate from the arrow position arrow.

Turn the Hand Wheel ④ anti-clockwise to ensure the needle is higher than needle plate and fabric (keep the needle in its highest position) before rotating the stitch selector or after sewing. Otherwise the needle will be bent.

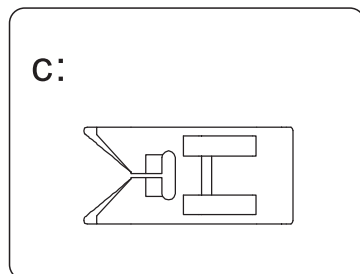
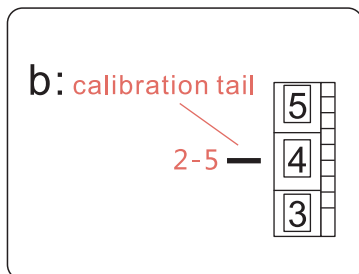
When selecting a pattern, please keep the pattern on knob aligned with the calibration tail.



## Basic Z-stitch

Simple zigzag sewing is widely used for overcasting or sewing on button, etc.

For better zigzag stitches, the upper thread tension should be looser than for straight stitches.



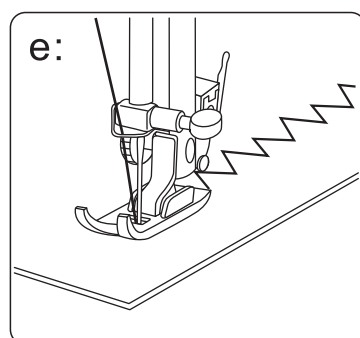
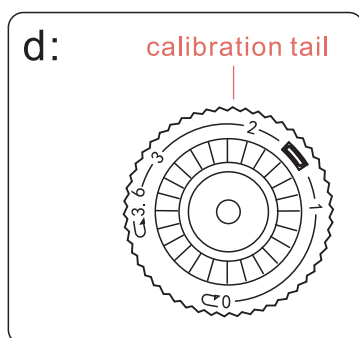
a. Stitch selector dial: “>” “<” or “wavy”

b. Thread tension dial: 2-5

c. Presser foot: zigzag presser

d. Stitch length adjustor: 0-3.6

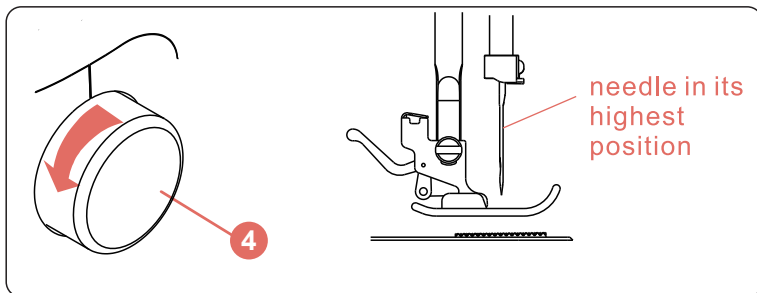
Stitches ( Pic. e )



**Note:**

You can select the suitable stitch length for most fabric. The higher the number, the longer the stitch length.

# Basic Sewing

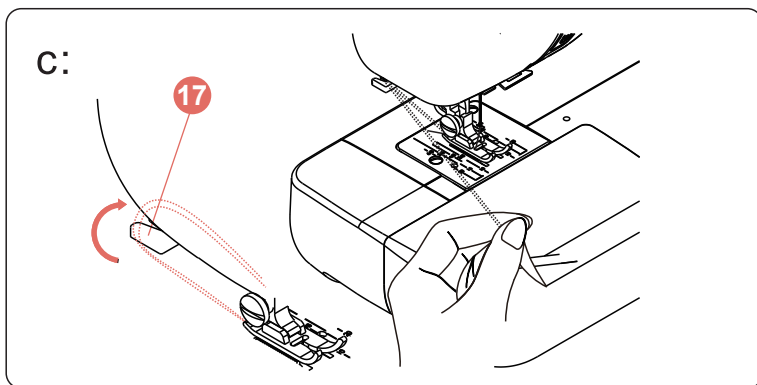
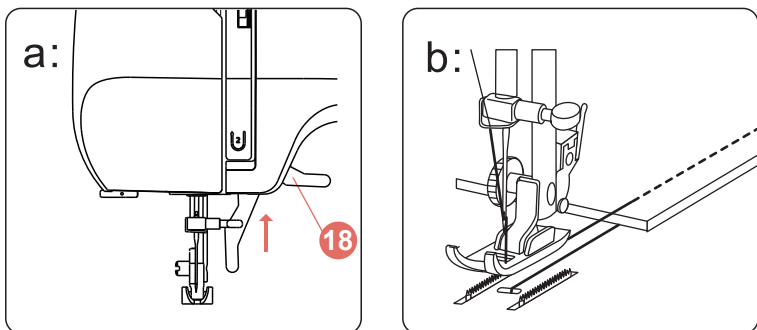


 **Note:**

The dial can not repeat rotating 360°, Please reverse rotate from the arrow position arrow.

Turn the Hand Wheel **4** anti-clockwise to ensure the needle is higher than needle plate and fabric (keep the needle in its highest position) before rotating the stitch selector or after sewing. Otherwise the needle will be bent.

When selecting a pattern, please keep the pattern on knob aligned with the calibration tail.



## Finish sewing

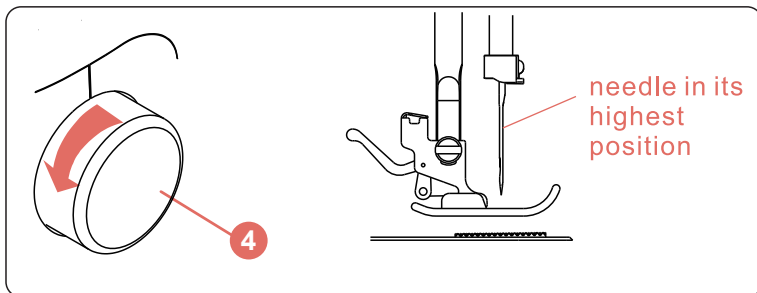
Rotate the Hand Wheel **4** anticlockwise (toward you) to bring the thread take up lever to its highest position.

Raise the presser foot and draw the fabric away from you.

Hold the threads behind the presser foot with both hands.

Guide them through the slit in the Thread Cutter **17** and press down.

# Utility Sewing

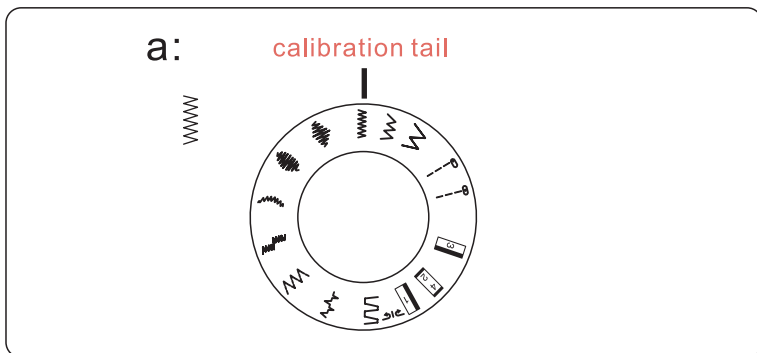


**Note:**


The dial can not repeat rotating 360°, Please reverse rotate from the arrow position arrow.

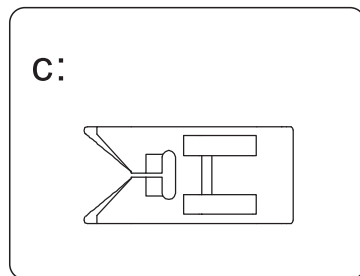
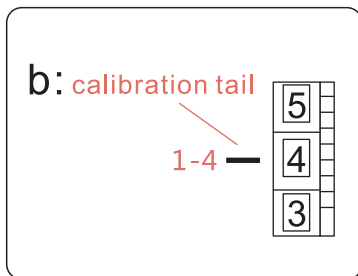
Turn the Hand Wheel **4** anti-clockwise to ensure the needle is higher than needle plate and fabric (keep the needle in its highest position) before rotating the stitch selector or after sewing. Otherwise the needle will be bent.

When selecting a pattern, please keep the pattern on knob aligned with the calibration tail.



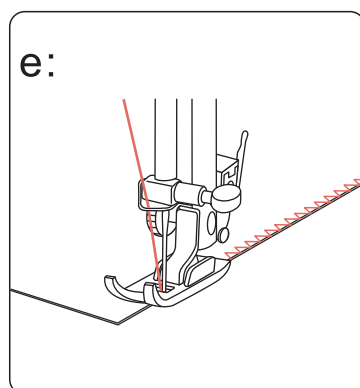
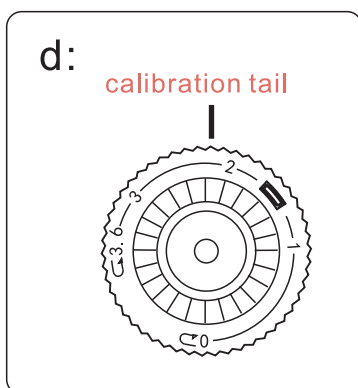
## Overlock stitches

- a. Stitch selector dial: “”
- b. Thread tension dial: 1-4
- c. Presser foot: zigzag presser
- d. Stitch length adjustor: 0-3.6



## Stitches ( Pic. e )

Overlock stitches are used for seams or neatening visible hems.



All overlock stitches are suitable for sewing and neatening edges and visible seams in one operation.

When neatening, the needle should just go over the edge of the fabric.

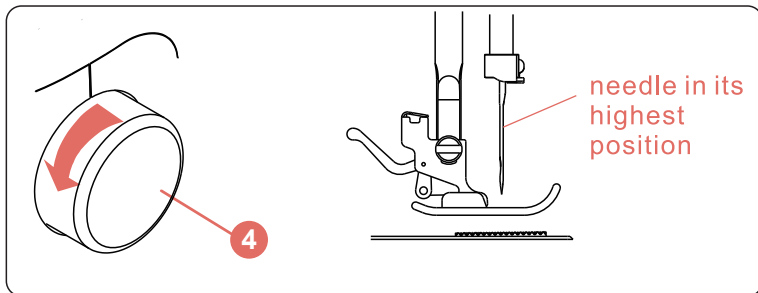
The stretch overlock stitch is used for fine knits, jerseys, neck edges or ribbing.

The double overlock stitch is used for fine knits, hand knits and seams.

**Note:**

You can select the suitable stitch length for most fabric. The higher the number, the longer the stitch length.

# Utility Sewing

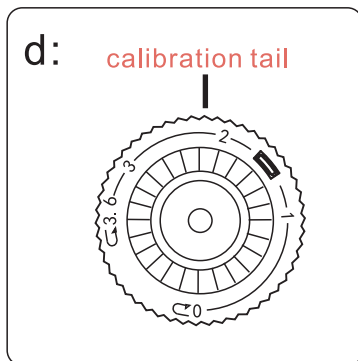
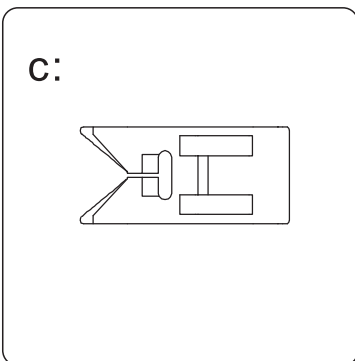
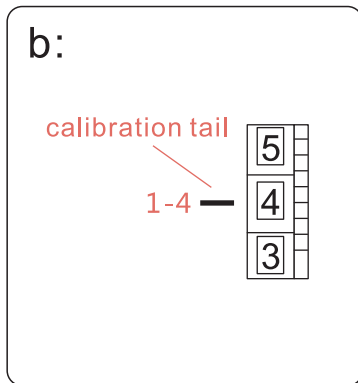
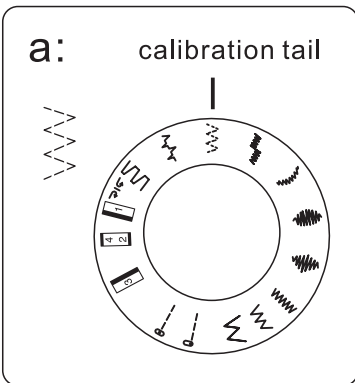


**Note:**

The dial can not repeat rotating 360°, Please reverse rotate from the arrow position arrow.

Turn the Hand Wheel 4 anti-clockwise to ensure the needle is higher than needle plate and fabric (keep the needle in its highest position) before rotating the stitch selector or after sewing. Otherwise the needle will be bent.

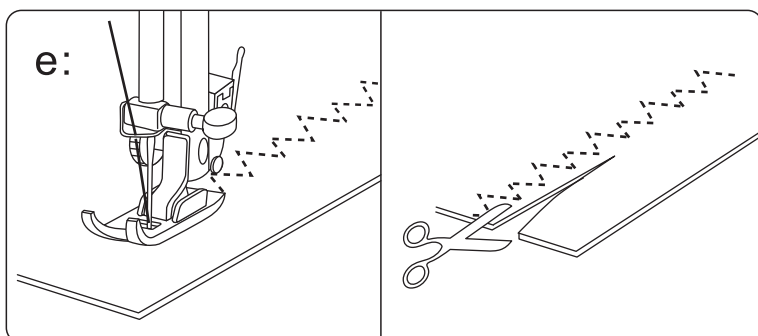
When selecting a pattern, please keep the pattern on knob aligned with the calibration tail.



## Three-point Z-seam

- a. Stitch selector dial: “Z”
- b. Thread tension dial: 1-4
- c. Presser foot: zigzag presser
- d. Stitch length adjuster: 0-3.6

Use this stitch for sewing a raw edge to crease sensitive fabric or synthetic elastic fabric such as rayon. Leave sufficient allowance at the edge and after sewing cut the hem as show.



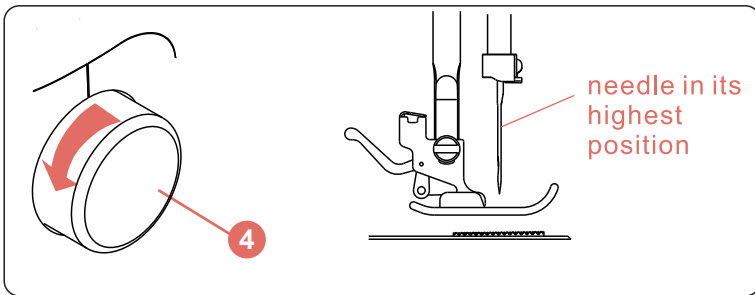
Stitches ( Pic. e )

**Note:**

You can select the suitable stitch length for most fabric. The higher the number, the longer the stitch length.

When cutting take care not to cut the stitches.

# Utility Sewing

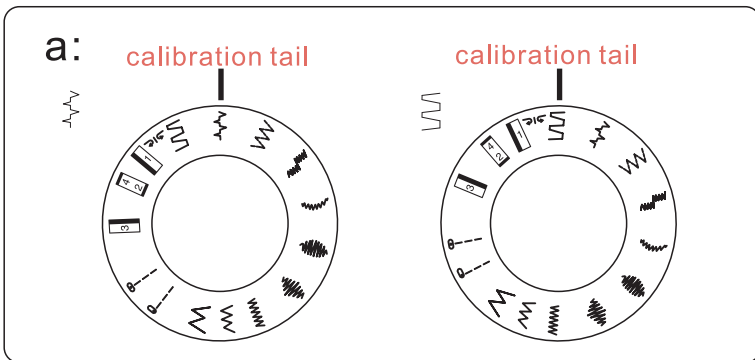


**Note:**

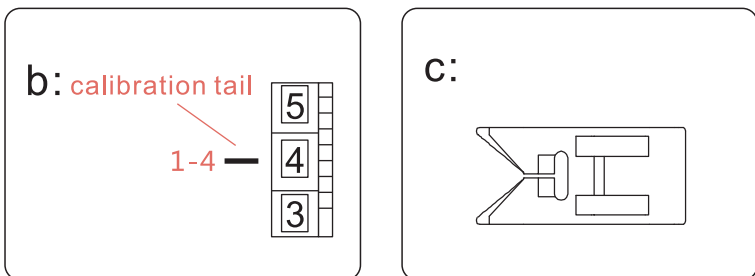
The dial can not repeat rotating 360°, Please reverse rotate from the arrow position arrow.

Turn the Hand Wheel **4** anti-clockwise to ensure the needle is higher than needle plate and fabric (keep the needle in its highest position) before rotating the stitch selector or after sewing. Otherwise the needle will be bent.

When selecting a pattern, please keep the pattern on knob aligned with the calibration tail.



## Blind seam

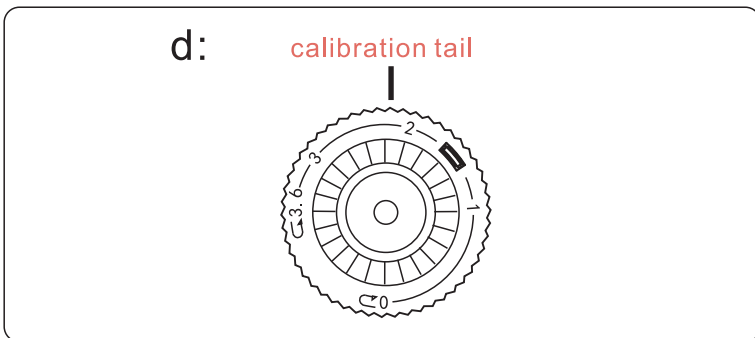


a. Stitch selector dial: “” or “”.

b. Thread tension dial: 1-4

c. Presser foot: zigzag presser

d. Stitch length adjustor: 0-3.6

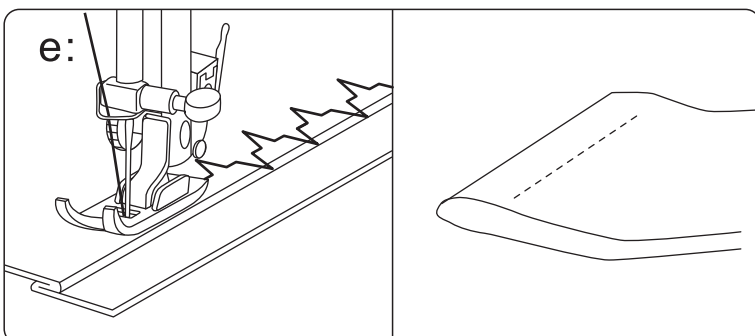


For loose or thick fabric you can overlock the raw edge, fold the fabric and leave approx 1cm hem.

When sewing allow the needle to just pass through the fold of the fabric.

After sewing press the fabric to make the blind stitch visible on its face side.

Stitches select ( Pic. e )

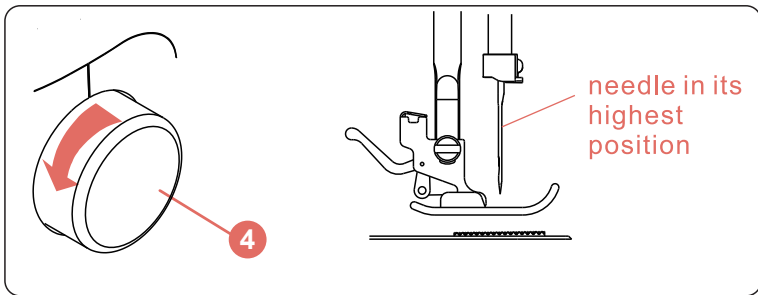


**Note:**

You can select the suitable stitch length for most fabric.

The higher the number, the longer the stitch length.

# Utility Sewing

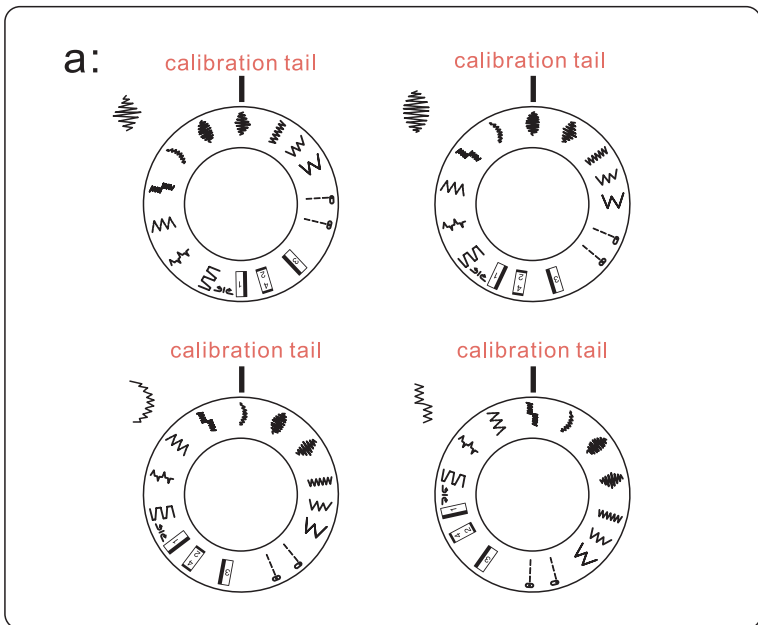


**Note:**

The dial can not repeat rotating 360°, Please reverse rotate from the arrow position arrow.

Turn the Hand Wheel ④ anti-clockwise to ensure the needle is higher than needle plate and fabric (keep the needle in its highest position) before rotating the stitch selector or after sewing. Otherwise the needle will be bent.

When selecting a pattern, please keep the pattern on knob aligned with the calibration tail.



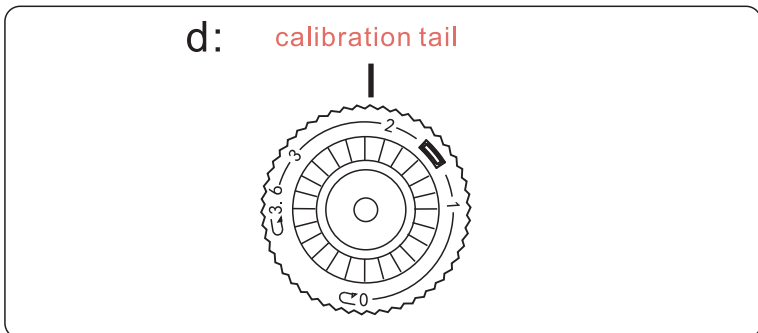
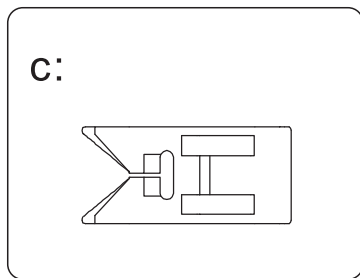
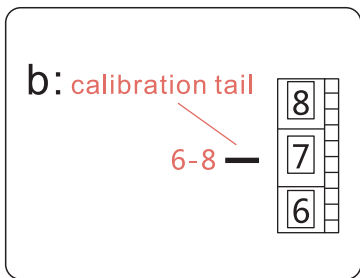
## Decorative stitch

- a. Stitch selector dial: “” “” “” or “”.
- b. Thread tension dial: 6-8
- c. Presser foot: zigzag presser
- d. Stitch length adjustor: 0-3.6

Adjust the thread tension so that the upper thread appears on the reverse side of the fabric.

Test on a scrap piece of fabric first to get the best results.

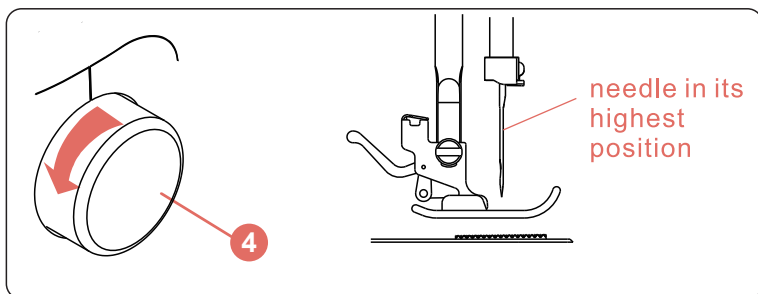
When sewing very thin fabrics, it is recommended that you use sewing stabilizer on the backside of the fabric.



**Note:**

You can select the suitable stitch length for most fabric. The higher the number, the longer the stitch length.

# Utility Sewing



**Note:**

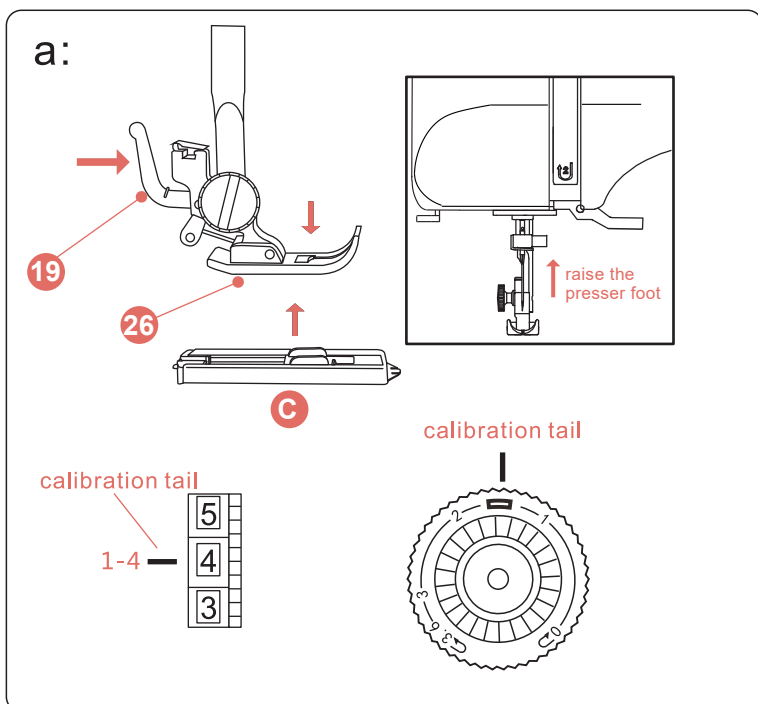
The dial can not repeat rotating 360°, Please reverse rotate from the arrow position arrow.

Turn the Hand Wheel **4** anti-clockwise to ensure the needle is higher than needle plate and fabric (keep the needle in its highest position) before rotating the stitch selector or after sewing. Otherwise the needle will be bent.

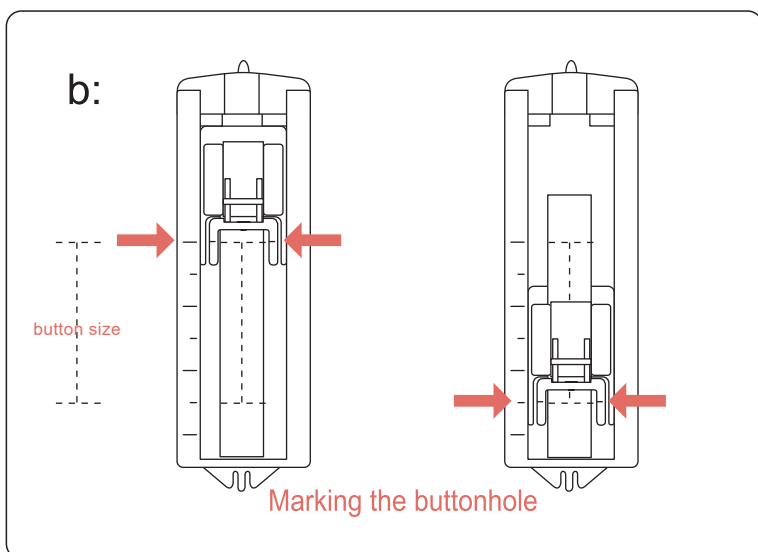
When selecting a pattern, please keep the pattern on knob aligned with the calibration tail.

## Sewing buttonholes

1. Stitch selector dial: “1” “2” or “3”
2. Thread tension dial: 1-5
3. Presser foot: Buttonhole foot
4. Stitch length adjustor:



- a: Raise the presser foot then press on the Presser Foot Holder **19** to release the Presser Foot **26**. Attach the Buttonhole foot **C**. Adjust the thread tension dial to 1-5. Stitch Length Dial **9** can be adjusted between .



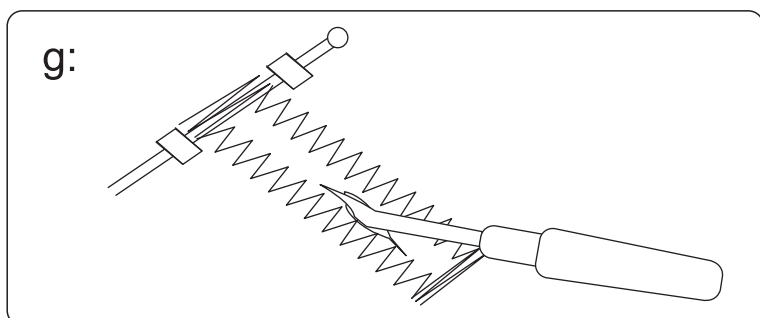
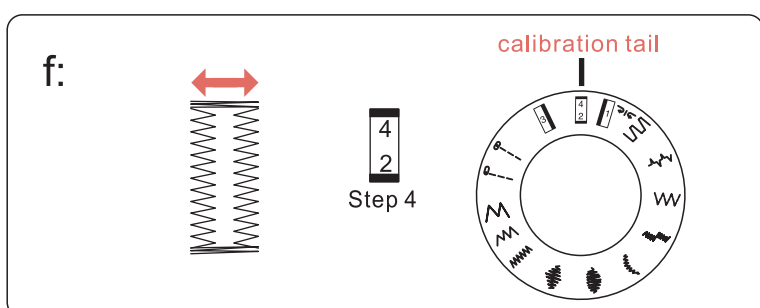
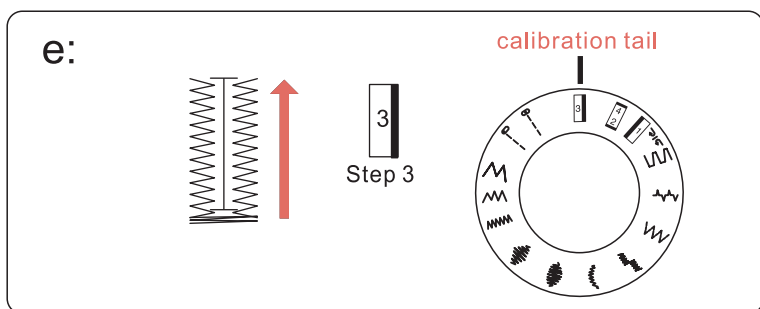
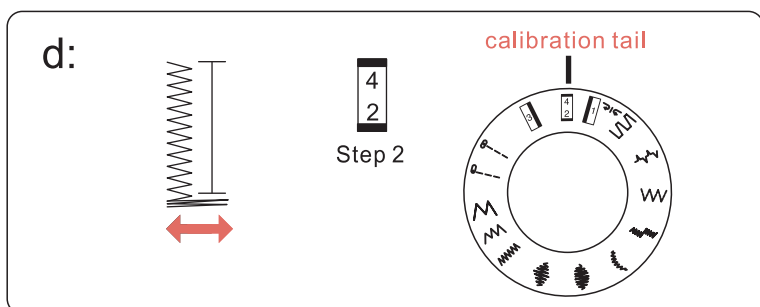
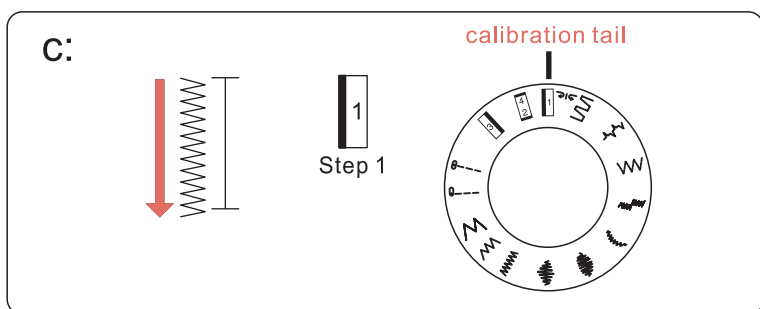
- b: Position the fabric so that the needle is on the mark that is furthest from you. Pull the Buttonhole Foot **C** towards you as far as it will go. Lower the foot.

Note: It is recommended that you practice sewing buttonholes on a scrap piece of fabric before trying to sew them on the actual garment.

Preparing to sew a buttonhole: Measure the diameter of the button to be used and add 1/8 inch (0.3cm) for the bar tacks. If you have a very thick button, add more to the diameter measurement.

Mark the position and length of the buttonhole on the fabric with tailor's chalk.

# Utility Sewing



## Note:

The dial can not repeat rotating 360°, Please reverse rotate from the arrow position arrow.

Turn the Hand Wheel **4** anti-clockwise to ensure the needle is higher than needle plate and fabric (keep the needle in its highest position) before rotating the stitch selector or after sewing. Otherwise the needle will be bent.

When selecting a pattern, please keep the pattern on knob aligned with the calibration tail.

## Sewing buttonholes

Step:

**c:** Turn the Stitch Selector Dial **16** to **1** and sew at moderate speed until you reach the end of your mark. When finished, lift the needle.

**d:** Turn the Stitch Selector Dial **16** to **2** and sew at 5-6 bar tack stitches. When finished, lift the needle.

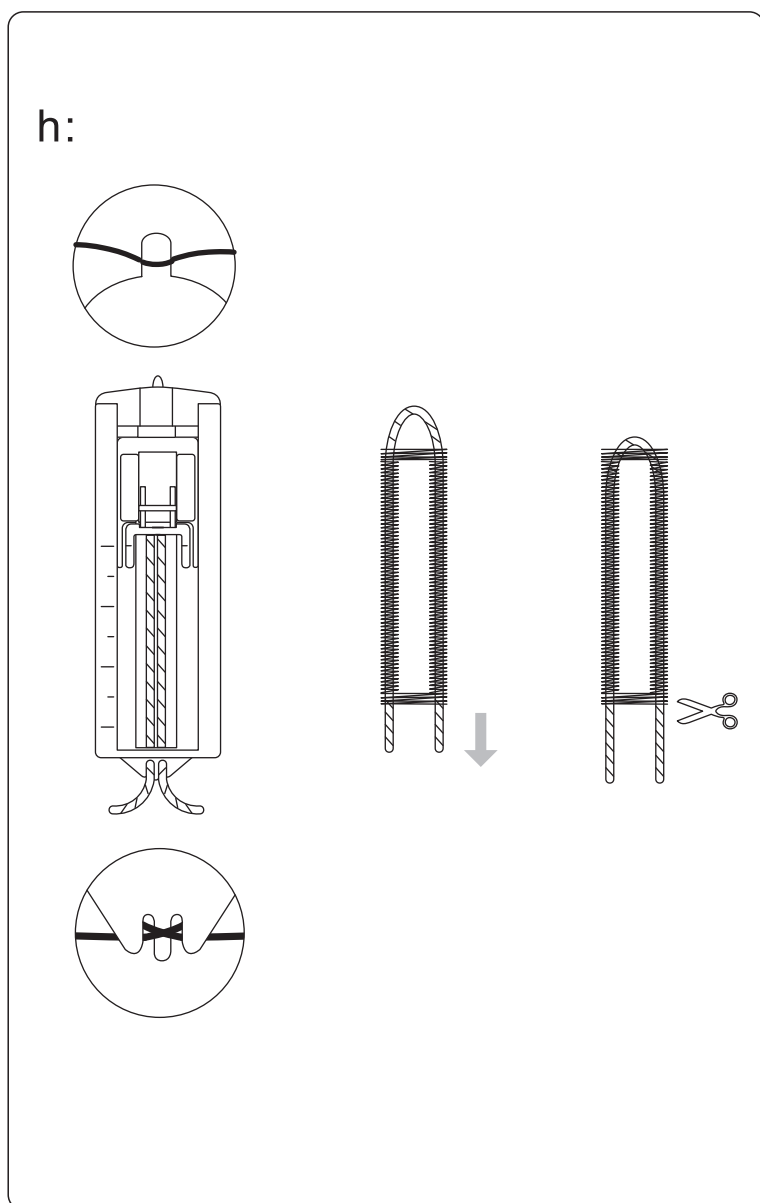
**e:** Turn the Stitch Selector Dial **16** to **3** and sew the left side of the buttonhole to the mark at the end of which is furthest from you. When you are finished sewing the left side, lift the needle.

**f:** Turn the Stitch Selector Dial **16** to **4** and sew 5-6 bar tack stitches. Lift the button foot and remove the fabric. Finishing the buttonhole:

**g:** Draw the upper thread through the backside of the garment and tie the upper and bobbin threads together. Cut the center of the buttonhole with the seam un-picker being careful not to cut the stitches on either side.



# Utility Sewing



## Note:

The dial can not repeat rotating 360°,  
Please reverse rotate from the arrow position arrow.

Turn the Hand Wheel **4** anti-clockwise to ensure the needle is higher than needle plate and fabric (keep the needle in its highest position) before rotating the stitch selector or after sewing. Otherwise the needle will be bent.

When selecting a pattern, please keep the pattern on knob aligned with the calibration tail.

## Sewing buttonholes

Tips:

Slightly reduce the upper tension to produce better results.

Use backing material for fine or stretchy materials.

We recommend placing a pin across the end of the buttonhole as a precaution against cutting the stitches with the seam ripper.

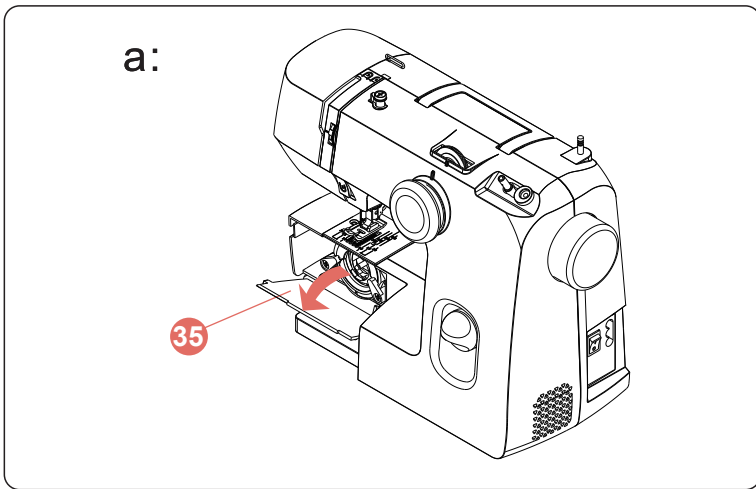
It is advisable to use gimp cord for stretch or knit fabrics. The zigzag should sew over the gimp.

The lines on the buttonhole foot can be used guides when sewing multiple buttonholes.

h: Sewing buttonholes with lines

1. Lift the presser foot, pull the gimp cord and come round the protruding point on back of the buttonhole foot.
2. Pull the gimp cord under the foot to the front.
3. Fix the gimp cord to the protruding point on front of foot.
4. Turn the needle down to the starting position on fabric, put down the presser foot.
5. Sew the buttonhole according to page 23.
6. Pull the gimp cord straightly.
7. Cut the gimp cord.

# Care Of Your Machine



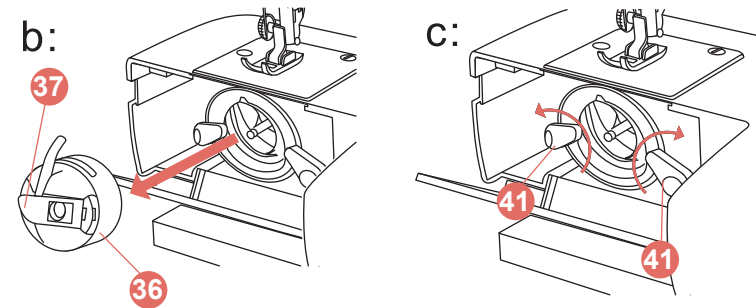
## Cleaning shuttle race

**⚡ Caution:**

Turn off the power switch and unplug the machine before cleaning. Do not dismantle the machine other than as explained in this section.

- 41 Shuttle race cover holder
- 42 Shuttle race cover
- 43 Shuttle
- Shuttle race

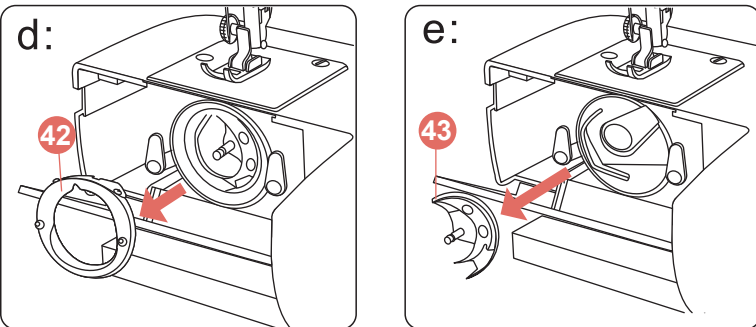
## To dismantle the hook race



a: Raise the needle to its highest position and open the Shuttle cover 35.

b: Open the hinged Latch 37 of the Bobbin Case 36 and take it out of the machine.

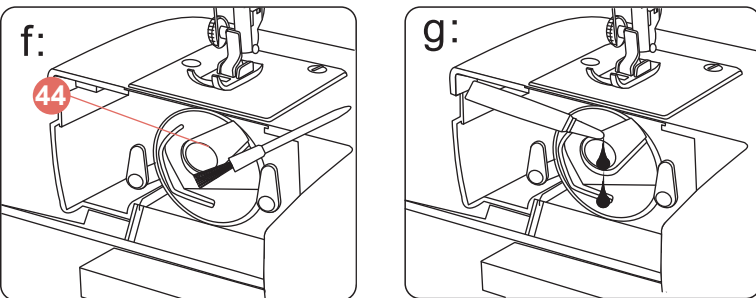
c: Open the Shuttle Race Cover Holder 41.



d: Remove the Shuttle Race Cover 42.

e: Remove the Shuttle 43.

f: Clean the Shuttle Race 44 with a brush and soft dry cloth.



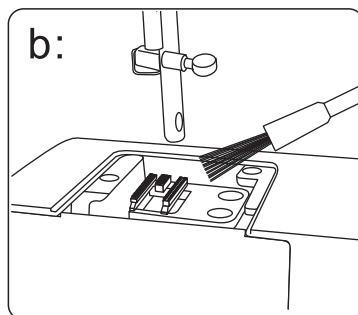
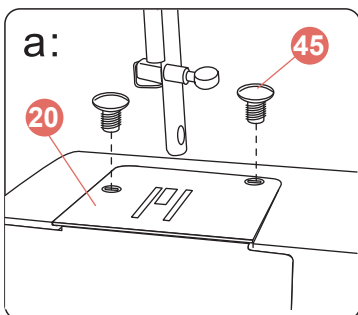
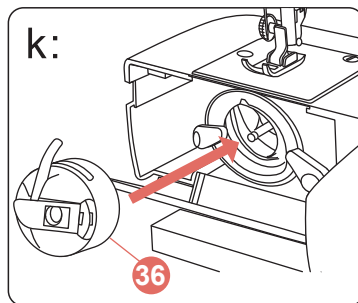
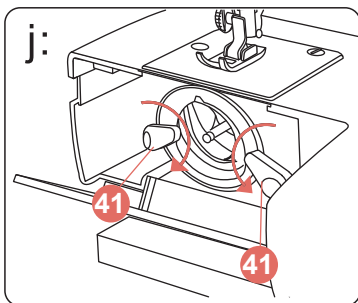
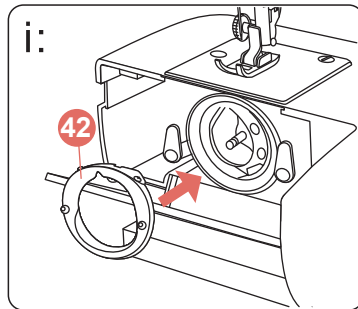
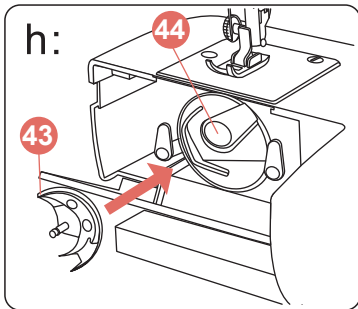
## To oil the shuttle race

g: Before assembling the shuttle race, oil the shuttle race using a few drops of fine quality sewing machine oil.

## Please add oil under below three conditions:

1. When the machine is keeping running for 8-12 hours;
2. When use the machine again after machine for a longer period;
3. When there is dry wear noise from the machine.

# Care Of Your Machine



## Cleaning shuttle race

Turn off the power switch and unplug the machine before cleaning. Do not dismantle the machine other than as explained in this section.

### To assemble the shuttle race

h: Hold the Shuttle **43** by the center pin and fit it carefully back into the Shuttle Race **44** , forming a perfect circle with the shuttle driver.

i: Attach the Shuttle Race Cover **42** making sure that the bottom pin fits into the notch.

j: Lock the Shuttle Race Cover Holders **41** by turning the holders back into position until heard a “click” sound.

k: Insert the Bobbin Case **36** until heard a “click” sound.

## Cleaning the feed dogs

### **45** Needle plate screw

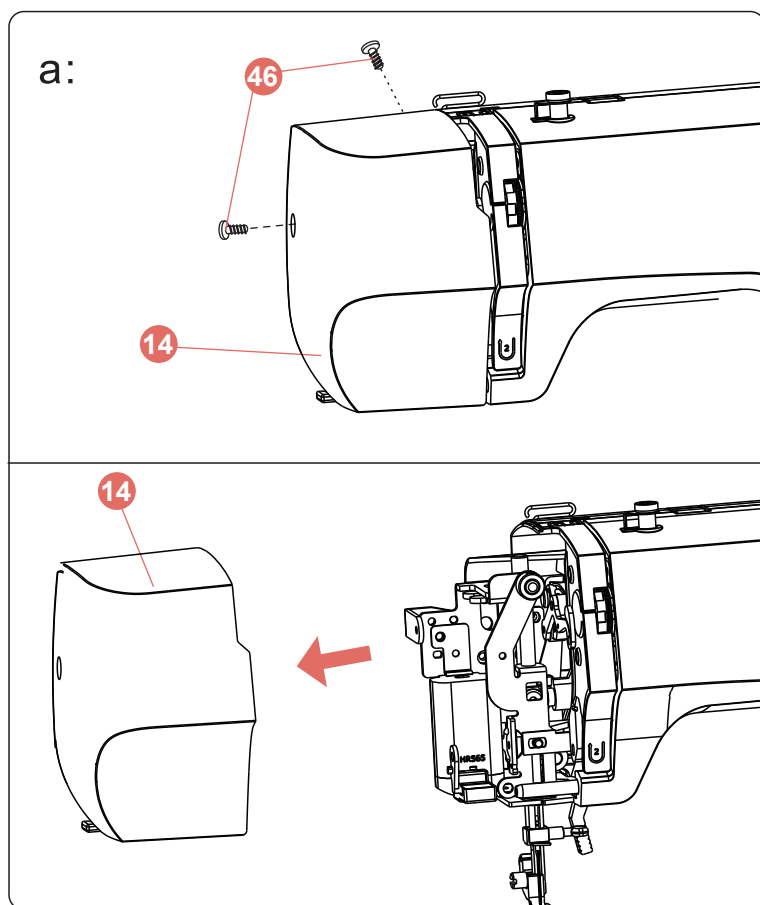
a: Remove the needle and the presser foot.

Remove the Needle Plate Screws **45** and remove the Needle plate **20** .

b: With a brush, clean out dust and lint clogging on the feed dog teeth.

Replace the Needle Plate **20** , tighten the Needle Plate Screw **45** .

# Care Of Your Machine



## Oiling the machine



Turn off the power switch and unplug the machine before cleaning. Do not dismantle the machine other than as explained in this section.

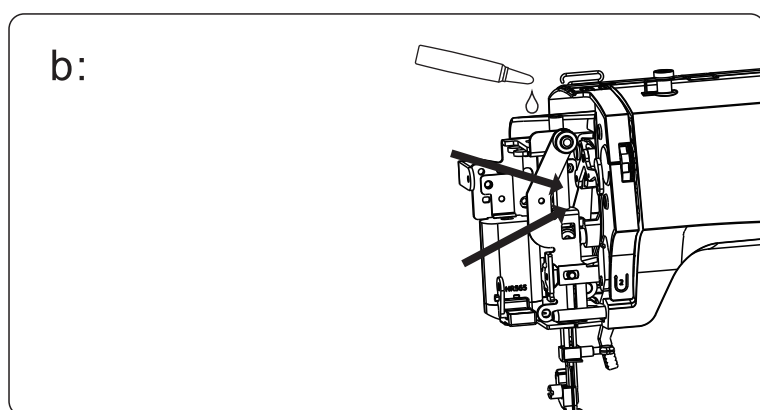
**46** Face cover screw

a: Remove the Face cover **14** .

Loosen the Face Cover Screw **46** and remove the Face Cover **14** to left side.

b: Oil the points shown by the arrows.

Replace the Face Cover **14** , tighten the Face Cover Screw **46** .



## Please add oil under below three conditions:

1. When the machine is keeping running for 8-12 hours;
2. When use the machine again after machine for a longer period;
3. When there is dry wear noise from the machine.
4. Appropriate amount of oil, do not add too much oil (Generally 2~3 drops are enough).

# Troubleshooting

Trouble	Causes	Solution
Top thread broken	<ol style="list-style-type: none"> <li>1.Improper top threading.</li> <li>2.Excessively tight top tension.</li> <li>3.Blunt or bend needle.</li> <li>4.Improper fixing of needle.</li> <li>5.At start of sewing, top thread and bottom thread are not correctly fixed beneath the presser.</li> <li>6.The thread is unsuitable</li> </ol>	<ol style="list-style-type: none"> <li>1.Threading the top thread again. (Refer to page 9.)</li> <li>2.Adjust the top tension. (Refer to page 13.)</li> <li>3.Replace the needle. (Refer to page 6.)</li> <li>4.Reinstall the needle. (Refer to page 6.)</li> <li>5.Proper operation. (Refer to page 12.)</li> <li>6.Replace the proper thread. (Refer to page 7.)</li> </ol>
bobbin thread broken	<ol style="list-style-type: none"> <li>1.The bobbin thread is not correctly threaded into bobbin case.</li> <li>2.Cotton flock collected on shuttle race.</li> <li>3.The bobbin is damaged and impossible to smoothly rotate.</li> </ol>	<ol style="list-style-type: none"> <li>1.Thread the bobbin thread again. (Refer to page 11.)</li> <li>2.Clean the shuttle race. (Refer to page 25,26.)</li> <li>3.Replace the bobbin. (Refer to page 11.)</li> </ol>
Needle broken	<ol style="list-style-type: none"> <li>1.Improper fixing of needle.</li> <li>2.Blunt or bend needle.</li> <li>3.The needle cramp screw is loosening.</li> <li>4.Excessively tight top tension.</li> <li>5.Too thin needle.</li> </ol>	<ol style="list-style-type: none"> <li>1.Reinstall the needle. (Refer to page 6.)</li> <li>2.Replace the needle. (Refer to page 6.)</li> <li>3.Tight the needle cramp screw.</li> <li>4.Adjust the top tension. (Refer to page 13.)</li> <li>5.Replace the proper needle. (Refer to page 7.)</li> </ol>
Skipping stitches	<ol style="list-style-type: none"> <li>1.Improper fixing of needle.</li> <li>2.Blunt or bend needle.</li> <li>3.The needle and (or) thread is unsuitable for the used fabric.</li> <li>4.Improper top threading.</li> <li>5.The needle is unsuitable.</li> </ol>	<ol style="list-style-type: none"> <li>1.Reinstall the needle. (Refer to page 6.)</li> <li>2.Replace the needle. (Refer to page 6.)</li> <li>3.Replace the proper needle and thread. (Refer to page 7.)</li> <li>4.Threading the top thread again. (Refer to page 9.)</li> <li>5.Replace the proper needle. (Refer to page 6.)</li> </ol>
Seam puckering	<ol style="list-style-type: none"> <li>1.Excessively tight top tension.</li> <li>2.Improper top threading.</li> <li>3.Excessively thick top thread for the used fabric.</li> </ol>	<ol style="list-style-type: none"> <li>1.Adjust the top tension. (Refer to page 13.)</li> <li>2.Threading the top thread again. (Refer to page 9.)</li> <li>3.Replace the proper thread. (Refer to page 6.)</li> </ol>
Unsmooth feed	<ol style="list-style-type: none"> <li>1.Feed dog is wound by thread.</li> <li>2.Thread jams.</li> </ol>	<ol style="list-style-type: none"> <li>1.Clean the feed dog. (Refer to page 26.)</li> <li>2.Clean the clamping thread.</li> </ol>
Not run of machine	<ol style="list-style-type: none"> <li>1.Not surely inserting power plug.</li> <li>2.Clamping thread at shuttle race.</li> <li>3.Failure to replace the bobbin winder shaft at original position after winding bobbin.</li> </ol>	<ol style="list-style-type: none"> <li>1.Check the power connector. (Refer to page 3.)</li> <li>2.Clean the clamping thread.</li> <li>3.Push the bobbin winder shaft to original position. (Refer to page 8.)</li> </ol>
Thread jaming	<ol style="list-style-type: none"> <li>1.The presser foot lifter is not lower down when sewing.</li> <li>2.Improper top threading.</li> <li>3.Improper bobbin threading.</li> </ol>	<ol style="list-style-type: none"> <li>1.Lower down the presser foot lifter. (Refer to page 4.)</li> <li>2.Threading the top thread again. (Refer to page 9.)</li> <li>3.Threading the bobbin thread again. (Refer to page 11.)</li> </ol>

# Specifications

Specifications	
Model:	590
Sewing Speed:	650±50 rpm
Needle Size:	14# (90#)
Power:	70W(motor) + 1W (led lamp)
Voltage:	AC 220~240V; 50Hz
Press Foot Height:	5.7±0.2 mm
Stitch Width:	4.5 mm
Stitch Length:	3.6 mm
Weight:	G.W. 6kg / N.W. 5 kg
Machine Size:	345 x 145 x270 mm
Package Size:	405 x 210 x335 mm



### Meaning of crossed - out wheeled dustbin:

Do not dispose of electrical appliances as unsorted municipal waste, use separate collection facilities.

Contact you local government for information regarding the collection systems available.

If electrical appliances are disposed of in landfills or dumps, hazardous substances can leak into the groundwater and get into the food chain, damaging your health and well-being.


When replacing old appliances with new ones, the retailer is legally obligated to take back your old appliances for disposals at least free of charge.



# MAKE SEWING EASIER REACH EMBROIDERY CLOSER

 Richword(Wuxi)Supply Chain Management Co.,Ltd

 (+86)0510 83380568

 [poolinservice@richword.com](mailto:poolinservice@richword.com)

 Room 1601, Jianghai West Road, Liangxi District,  
Wuxi City, Jiangsu Province, China