



Model : **RIDER  
BULL**

**READ THIS MANUAL CAREFULLY  
BEFORE YOU USE THIS VEHICLE!**  
It contains important safety information.



## **OWNER'S MANUAL**

PLEASE CHECK YOUR LOCAL RIDING LAWS AND  
REGULATIONS BEFORE OPERATEING THIS VEHICLE

# FOREWORD

Thanks for purchasing an ATV of our company. This ATV conform the European 2001/95EC,2004/108EC,98/37EC and the American ANSI/SVIA1-2017, section 213 of the Clean Air Act (42 U.S.C.7547) and 40 CFR Parts 1051, 1065 and 1068.

This manual includes important safety information. It provides information about special techniques and skills necessary to ride this vehicle. It also includes the details to operate and necessary maintenance procedure to perform safely.

## **IMPORTANT SAFETY MESSAGE:**

- PAY ATTENTION TO THE CAUTION AND WARNING LABELS ON THIS ATV.
- READ THIS MANUAL BEFORE OPERATING THIS ATV. MAKE SURE YOU UNDERSTAND ALL INSTRUCTIONS. ALSO KEEP ALL INFORMATIONS IN MIND WHILE OPERATING THIS ATV.
- ANYONE UNDER AGE 12 SHOULD NEVER BE ALLOWED TO OPERATE THIS ATV.
- KEEP THIS MANUAL IN THE WATERPROOF PLASTIC BAG AND STORED IN THE COMPARTMENT PROVIDED.
- FAILURE TO FOLLOW THE WARNINGS CONTAINED IN THIS MANUAL CAN RESULT IN SERIOUS INJURY OR DEATH.
- NEVER CARRY A PASSENGER ON THIS ATV.

# IMPORTANT NOTICE

All-Terrain Vehicle riding is a wonderful sport, and we hope you will enjoy it to the fullest.

This vehicle complies with all applicable traffic laws and regulations. Please check your local riding laws and regulations before operating this vehicle.

Read this manual carefully and completely before starting your new ATV.

it contains important safety information. Never operate this ATV without proper instruction.

Beginner should take a training course before operating this vehicle.

Never allow a child under the age 12 to operate this ATV. Use of this ATV by children under 12 years of age can lead to severe injury or death of the child. Even youths at or over age 12 may not have the skills, abilities, or judgment needed to operate this ATV safely. Therefore youths starting at age 12 should have adult supervision even after they attend a training course. To protect your safety, make sure you use your vehicle legally, show concern for the environment, and respect the rights of other people.

## WARNING

Indicate a potential hazard that could result in personal injury or death.

Whenever you see the symbols shown below, heed their instructions. Always follow safe operating and maintenance practices.

### **WARNING**

#### **HAZARD**

Failure to heed WARNINGS.

#### **WHAT CAN HAPPEN**

WARNINGS identify special instructions or procedures which, if not correctly followed, could result in serious injury or death.

#### **HOW TO AVOID THE HAZARD**

Read all WARNINGS in this manual carefully and for your safety be sure to follow this instruction.

### **CAUTION**

This caution symbol identifies special instruction or procedures which, if not strictly observed, could result in damage to or destruction of **equipment**.

### **NOTE**

This note symbol indicates points of particular interest for more efficient and convenient **operation**.

**FAILURE TO FOLLOW THE WARNINGS CONTAINED IN THIS MANUAL CAN RESULT IN SERIOUS INJURY OR DEATH.**

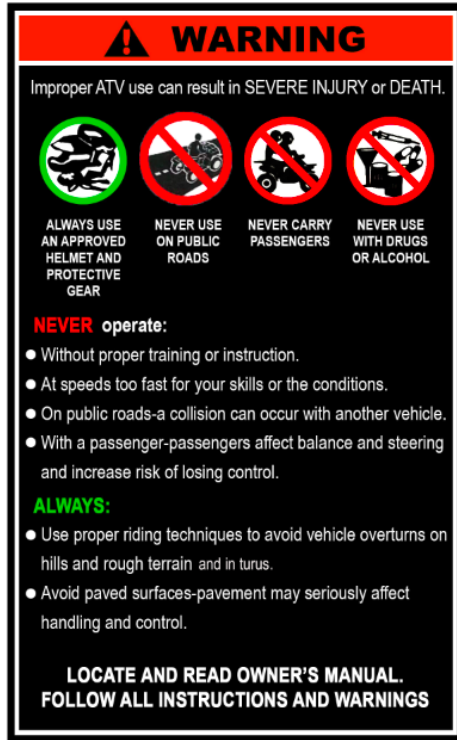
# WARNING LABELS LOCATION

Read and understand all of the labels on your ATV. They contain important information for safe and proper operation of your ATV. Never remove any labels from your ATV. If a label becomes difficult to read or comes off, a replacement label is available from your dealer.

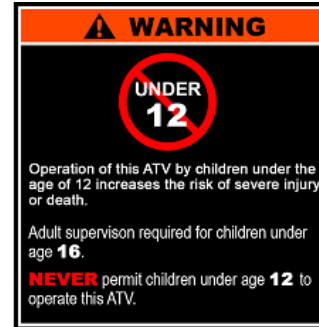


1. General warning labels
2. Age warning label
3. Warning labels to remind passengers
4. Overloading and tire pressure combinations warning labels
5. Max load: 10kg

### 1. General warning labels



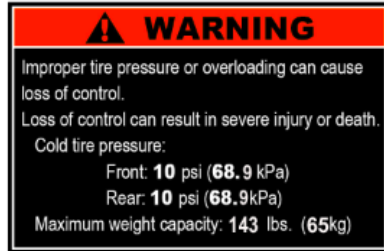
### 2. Age warning labels



### 3. Warning labels to remind passengers



4. Overloading and tire pressure combinations warning labels



5. Max load:10kg



# CONTENTS

FOREWORD .....	1
IMPOTANT NOTICE .....	2
Important notice to parents and adults.....	3
WARNING LABELS LOCATION .....	4
SAFETY INFORMATION.....	9
Safety riding recommendations .....	13
COMPONENTS LOCATION.....	16
SERIAL NUMBER LOCATION.....	17
VEHICLE IDENTIFICATION.....	17
PARTS INSTRUCTIONS.....	18
Key .....	18
The Ignition switch.....	18
Multifunction switch .....	18
Right handlebar .....	18
Speed Limiter Screw .....	19
Parking brake lever and pin.....	19
Seat .....	20



Fuel tank .....	21
REMOTE CONTROL.....	22
BEFORE THE INSPECTION OPERATION.....	27
IMPORANT ELEMENTS OPERATION ANG RIDES.....	33
REGULAR MAINTENANCE AND MINOR REPAIRS.....	38
CLEANING .....	62
STORAGE.....	63
MAIN SPECS .....	66
ELECTRIC DIAGRAM.....	68



## SAFETY INFORMATION

**AN ATV IS NOT A TOY AND CAN BE HAZARDOUS TO OPERATE.** An ATV handles differently from other vehicles including motorcycles and cars. A collision or rollover can occur quickly, even during routine maneuvers such as turning and driving on hills or over obstacles, if you fail to take proper precautions.

**SEVERE INJURY OR DEATH can result if you do not follow these instructions:**

- Read this manual and all labels carefully and follow the operating procedures described.
- Never operate an ATV without proper instruction. Take a training course. Beginners should receive training from a certified instructor.
- Never allow a child under age 12 to operate ATV without adult supervision, and never allow continued use of an ATV by a child if he or she does not have the abilities to operate it safely.
- Never carry a passenger on an ATV. Never consume alcohol or drugs before or while operating this ATV.
- Never operate an ATV without wearing an approved motorcycle helmet that fits properly. You should also wear eye protection (face shield or goggles), gloves, boots, long-sleeved shirt or jacket, and long pants.
- Always go slowly and be extra careful when operating on unfamiliar terrain. Always be alert to

changing terrain conditions when operating the ATV.

- Always follow proper procedures for turning as described in this manual. Practice turning at low speeds before attempting to turn at faster speeds. Do not turn at excessive speed.
- Never operate on excessively rough, slippery or loose terrain until you have learned and practiced the skill necessary to control the ATV on such terrain. Always be especially cautious on these kinds of terrain.
- Always keep both hands on the handlebars and both feet on the footrests of the ATV during operation.
- Always inspect your ATV each time you use it to make sure it is in safe operating condition.
- Always follow the inspection and maintenance procedures and schedules described in this manual.
- Never attempt wheelies, jumps, or other stunts.
- Never operate at speeds too fast for your skills or the conditions. Always go at a speed that is proper for the terrain, visibility and operating conditions, and your experience.
- Never exceed the stated load capacity for an ATV. Cargo should be properly distributed and securely attached. Reduce speed and follow instructions in this manual for carrying cargo or pulling a trailer. Allow greater distance for braking.
- Never modify an ATV through improper installation or use of accessories.
- Never operate the ATV on hills too steep for the ATV or for your abilities. Practice on smaller hills before attempting larger hills.

- Always follow proper procedures for climbing hills as described in this manual. Check the terrain carefully before you start up any hill. Never climb hills with excessively slippery or loose surfaces. Shift your weight forward. Never open the throttle suddenly or make sudden gear changes. Never go over the top of a hill at high speed.
- Always use the size and type tires specified in this manual. Always maintain proper tire pressure as described in this manual.
- Never attempt to operate over large obstacles, such as large rocks or fallen trees. Always follow proper procedures when operating over obstacles as described in this manual.
- Always use proper procedures if you stall or roll backwards when climbing a hill. To avoid stalling, use proper gear and maintain a steady speed when climbing a hill. If you stall or roll backwards, follow the special procedure for braking described in this manual. Dismount on the uphill side or to a side of pointed straight uphill. Turn the ATV around and remount, follow the procedure described in this manual.
- Always be careful when skidding or sliding. Learn to safety control skidding or sliding by practicing at low speeds and on level, smooth terrain. On extremely slippery surface, such as ice, go slowly and be very cautious in order to reduce the chance of skidding or sliding out of control.
- Never operate an ATV in fast flowing water or in water deeper than the recommended in this manual. Remember that wet brakes may have reduced stopping ability. Test your brakes after leaving water. If necessary, apply them several times to let friction dry out the linings.

- Always follow proper procedures for going down hills and for braking on hills as described in this manual. Check the terrain carefully before you start down any hill. Shift your weight backward. Never go down a hill at high speed. Avoid going down a hill at an angle that will cause the ATV to lean sharply to one side. Go straight down the hill where possible.
- Always follow proper procedures for crossing the side of a hill as described in this manual. Avoid hills with excessively slippery or loose surface. Shift your weight to the uphill side of the ATV. Never attempt to turn the ATV around on any hill until you have mastered the turning technique described in this manual on level ground. Avoid crossing the side of a steep hill if possible.
- Always check for obstacles before operating in a new area.

# **SAFETY RIDING RECOMMENDATIONS**

## **1. FAMILIARIZE YOURSELF WITH THE ATV**

Your riding skill and your mechanical knowledge form the safe riding practices. We suggest that you practice riding your ATV in a non-traffic situation without obstacles until you are thoroughly familiar with your machine and its controls. Remember that practice makes perfect.

## **2. KNOW YOUR SAFETY SPEED LIMITS**

Ride within the boundaries of your own skill at all times. Knowing these limits and staying within them will help avoid accidents.

## **3. BE EXTRA SAFETY CONSCIOUS ON BAD WEATHER DAYS**

Riding on bad weather days, requires extra caution. Braking distance doubles on a rainy day. Stay off the painted surface marks, pot holes and greasy appearing areas as they can be especially slippery. Use extreme caution at railway crossings and on metal gratings. Whenever in doubt about road conditions, SLOW DOWN!

## WARNING

### **POTENTIAL HAZARD**

Improper handling of gasoline.

### **WHAT CAN HAPPEN**

Gasoline can catch and you could be burned.

### **HOW TO AVOID THE HAZARD**

Always shut down the engine while refueling. Do not refuel immediately after the engine has been running and is still very hot. Do not spill gasoline on the exhaust muffler/pipe or engine when refueling. Never refuel while smoking, or while in the vicinity of sparks, open flames, or other sources of ignition such as the pilot lights of clothes dryers or water heaters.

When transporting the ATV in another vehicle, make sure it is placed upright and its fuel cock is in the "OFF" position. Otherwise, gasoline may leak out from the fuel tank or carburetor.

### **WHAT CAN HAPPEN**

Gasoline is poisonous and can cause injuries.

### **HOW TO AVOID THE HAZARD**

If you swallow some gasoline or breathe a lot of gasoline vapor, or get some gasoline into your eyes, see your doctor right away. If gasoline spills on your skin, wash with water and soap immediately. If gasoline spills on your clothes, change your clothes immediately.

## **WARNING**

### **POTENTIAL HAZARD**

Starting or running the engine in a closed area.

### **WHAT CAN HAPPEN**

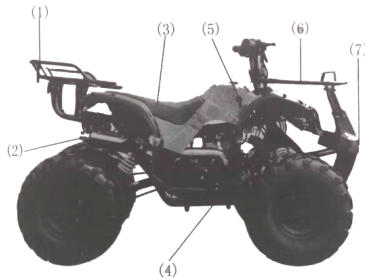
Exhaust smokes are poisonous and may cause people unconsciousness and death within a short time.

### **HOW TO AVOID THE HAZARD**

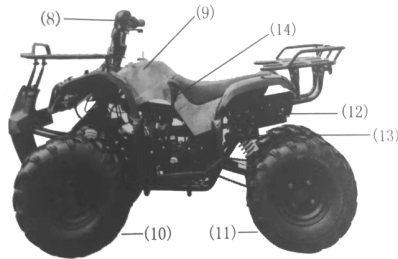
Always start and operate your ATV in an area with adequate ventilation



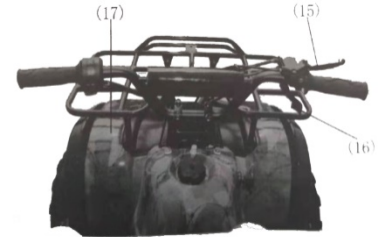
# COMPONENTS LOCATION



- 1) Rear rack
- 2) Muffler
- 3) Seat
- 4) Foot brake
- 5) Key switch
- 6) Front rack



- 7) Front protector
- 8) Handle bar
- 9) Fuel box
- 10) Front wheel
- 11) Rear wheel
- 12) Rear light



- 13) Battery
- 14) Shift Gears
- 15) Front brake
- 16) Greaser
- 17) Body

# SERIAL NUMBER LOCATION VEHICLE IDENTIFICATION

The Product Identification Number (PIN) and/or engine serial numbers are used to register the ATV. They are also used to assist your dealer when ordering parts or referring to special service information.

The PIN NO. is stamped on the nameplate and the nameplate is riveted on the frame. The engine serial number is stamped on the left side of crankcase.



PIN



Engine number

## Identification number records

Record the product identification number and engine number in the follow spaces provided for assistance when ordering spare parts from your dealer or for reference case the ATV is stolen.

1. Product identification Number:

--	--	--	--	--	--	--	--	--	--	--	--	--	--	--	--	--	--

2. Engine Number

--	--	--	--	--	--	--	--	--

## Product identification number



Product identification number is stamped on the nameplate. This vehicle identification number is used to identify your ATV.

# PARTS INSTRUCTIONS

## KEY





This ATV comes with a pair of identical ignition keys. Keep the spare key in a safety place.

## The ignition switch

Location	Functions	Key state
	All circuits wire disconnected	Pull out
	Circuit was connected, engine starter	Not pull out

## Multifunction switch

- 1) Dimmer switch
- 2) Starter switch
- 3) Emergency engine stop switch

Location	Functions
	Turn on dipped headlight
	Turn on high beam
	When press the starter switch, engine rotation
	When press the off switch, stop rotating engine

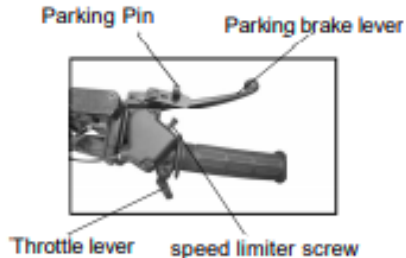
## Right handlebar

### Throttle Lever

**Accelerate:** Press the throttle lever.

**Decelerate:** Release the throttle lever. The spring of the lever will return to the position prior pressing and the engine will return to an idle. Before starting the engine, check the throttle

lever to make sure it is operating smoothly. Make sure it return to idle position as soon as the lever is released.



#### WARNING

##### **POTENTIAL HAZARD**

Malfunction of throttle.

##### **WHAT CAN HAPPEN**

The throttle lever could be hard to operate, cause it difficult to speed up or slow down when you need to. This could cause an accident.

##### **HOW TO AVOID THE HAZARD**

Always check the operation of the throttle lever before you start the engine. If it does work smoothly, check for the reason. Correct the problem before riding this ATV. Consult your dealer if you cannot find or solve the problem by yourself.

### **Speed Limiter Screw**

There is a screw on throttle box, which is designed to keep the throttle from fully opening, even the throttle lever is pushed to the maximum. Screwing in the adjuster limits the maximum engine power available and decreases the maximum speed of the vehicle. Your ATV was delivered with an adjustable speed limiter. We recommends that all beginners start off with the speed limiter screw turned into limit the speed while they learn. Once the beginner becomes more familiar with operating the ATV,

the screw maybe gradually turned out to increase maximum speed. Adults should decide when to adjust the ATV for more power as the riding skills of their youngster improve.

#### **WARNING**

##### **POTENTIAL HAZARD**

Adjust the speed limiter and throttle improper.

##### **WHAT CAN HAPPEN**

The throttle cable could be damaged and cause improper throttle operation. You could lost control. have accident or be injured.

##### **HOW TO AVOID THE HAZARD**

Do not turn the speed adjuster out more than 20 mm (0.8in).

## **Parking pin**

Squeezing the parking brake lever will activate the front brake to slow down or stop the ATV.

Check the free play of parking brake lever. The normal free play is between 10 to 20 mm. You can adjust the brake lever by turning the adjuster.

#### **WARNING**

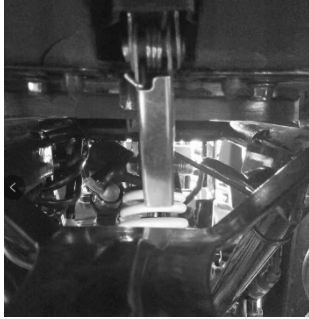
Using only the front or rear brake is dangerous while driving in high speed, apply the brakes lightly and with great care.

## **Seat**

Removing the seat by pulling the seat lock lever upward and pull up the seat at the rear. Insert the projection on the front of the seat into the holder and push down on the seat at rear to install the seat.

#### **NOTE**

Always make sure the seat is securely fitted.



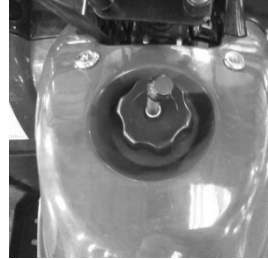
Seat lock lever

## Fuel tank

The fuel tank is steel, its maximum capacity is 2L.

### WARNING

- Do not overfills the fuel tank.
- Always shut the engine off by turning the ignition key to the “OFF” position while refueling. Never refuel near an open flame or lit cigarettes.
- Take special care of not spilling the gasoline during refueling, always clean off the fuel stain or residual before starting the engine.



Fuel tank

open the fuel tank cap, remove the end of the vent tube from the hole in the vehicle body and turn the fuel tank cap counterclockwise. To close the fuel tank cap, turn it clockwise and tighten it securely. Be sure that the end of the vent tube is reinstalled in the hole in the vehicle body and routed properly as shown.

## REMOTE CONTROL

The ATV comes equipped with a remote control which consists of a purple Flameout key and a black unlock key. An adult supervising operation of the vehicle can use the remote control to stop the engine from a short distance. The adult who trains the young rider above 12 should always use this remote control until the rider develops sufficient skills for safe operation of the vehicle.



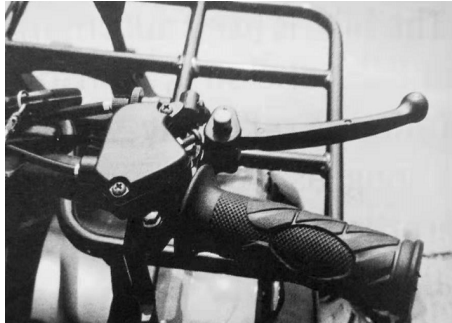
This remote control is black and small, it's very easy to operate. There are two keys on it, one purple Flameout key and one black unlock key. If you notice any driving hazard or unsafe situation, press the purple Flameout key then the engine will stop running. When you want to start the engine again, you must press the black key first to unlock it, then you can start to move. The best distance to use this remote control is within 20m.

### WARNING

When the stop switch cap is pulled off, the engine will stop running. The vehicle will continue to roll for some distance, however. Remember this when judging when to operate the remote engine stop switch.

### The front wheel brake handle

Front-wheel brake handle in the right hands. To handle its direction pinch Rafah as a front-wheel brake.



### The fuel Cover

**Note:** the fuel Cover mouth ventilation can not plug.

### The rear brake pedal

rear-wheel brake pedal in the right pedal. To trample the pedal as a rear brake.





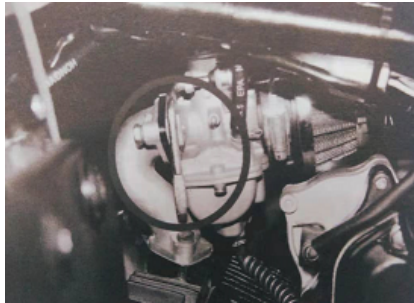
### Shift Gears

The Bike is used automatic centrifugal clutch, shift operation is relatively simple, as long as by pegging the throttle to stall with their hands on up. The car stalls non-circulating system; The middle is neutral gear, move forward is forward gear, move back is reverse gear.



### Choke

Resistance carburetor throttle in the right arm. Starting cold engine needs a concentration of combustible gas concrete, in such circumstances, will be impacted throttle arm moving down. After pre- heating the engine will pull rod to the original starting position.



### .Start

Start, please go of the pinch after the brake handle, then press the start switch.



### The fuel valve (If having)

The fuel valve in the fuel filter will supply fuel from the tank to the carburetor. Fuel valve has three locations.



Disconnect: fuel will not flow. When the engine is not running, always will be back to handle the position.



Connected: fuel flow carburetor run, it will handle this position.

## BEFORE THE INSPECTION OPERATION

Prior the use of the car, should check the following

Item	Normal checks
Brake	Inspect the brake to make sure it is operational and unrestricted. Adjust as necessary. Test the brakes by using them at a low speed.
accelerator	Check to see if operate of the accelerator is smooth. Apply lubrication/adjustments if necessary.
Chain-driven	Inspect the chain for wear and tear. Adjust the chain if necessary.
Tire/wheel	Check tire pressure and wheel for possible wear and tear. Make adjustments or pump air if necessary.
Transmission and brake pedal shaft	Inspect to make sure parts are functional, and add lubricant if necessary.
Brake and clutch manipulation of the handle	Inspect to make sure both parts are functional Add lubrication if necessary.
The stents and stent-axis side	Check to make sure components are functional. Add lubrication if necessary.
Parts /fasteners	Inspect the parts and fasteners.Tighten or adjust as necessarv.

Fuel tank	Inspect the fuel tank for possible leakage. Add fuel as necessary, but do not overfill, battery.
Battery	Check liquid level. If necessary, distilled water should be added.
Engine stop switch	Proper operation of switch. Start engine, then press stop switch. Engine should stop.
General condition	Bolts and nuts are tight; no rattle from any parts of the engine when running; no visible evidence of damage including frame cracks.

### **POTENTIAL HAZARD**

Failure to check the ATV before operating. Failure to maintain the ATV properly.

### **WHAT CAN HAPPEN**

It could cause an accident or equipment damage.

### **HOW TO AVOID THE HAZARD**

Always check your ATV carefully each time before you use it to be sure the ATV is in safe operation condition.

Always follow inspection and maintenance procedure as shown in the owner's manual.

## Brakes

1. Brake operation Test the brakes at slow speed after starting to make sure they are working properly. If any of the bakes does not provide proper braking function, inspect the brake for wear.
2. Brake levers check the correct free play in the brake levers. Adjust it if the free play is incorrect.

### **POTENTIAL HAZARD**

Improperly operating brakes while riding.

### **WHAT CAN HAPPEN**

The braking ability could lose and cause an accident.

### **HOW TO AVOID THE HAZARD**

Always check the brakes every time before you start to ride. Do not ride the ATV if you find there is any problem with the brakes. Find your dealer to inspect it if you cannot correct the problem by yourself according to the adjustment procedures provided in this manual.

## Fuel

Always fill regular unleaded gasoline to your ATV. Do not use leaded gasoline, it will cause damage to internal engine parts and also there is very big influence to the environment al pollution.

If knocking or pinging occurs, use a different brand of gasoline or premium unleaded fuel.

Do not overfill the fuel tank. Be careful not to spill fuel, especially on the engine or exhaust pipe.

Make sure the fuel tank cap is closed securely.

Do not refuel right after the engine has been running and is still very hot.

## DRIVERS MUST

**Fuel:** fuel compartment confirm the adequacy of fuel.

**Warning.** Do not add fuel tank drive. Otherwise, and in the subsequent heating and fuel inflation, the fuel will overflow.

Fuel spillage should be avoided in the hot engine.

Recommended fuel: 90 "petrol

Fuel tank capacity:

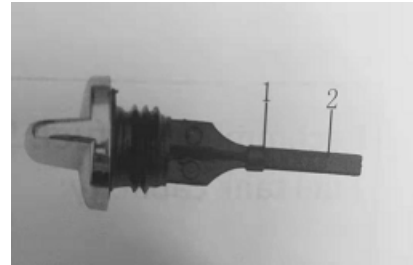
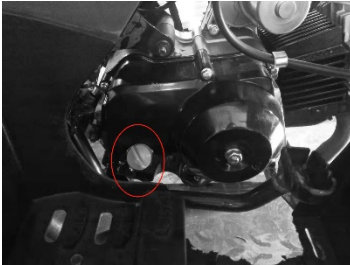
Total: 2.2 L

## Oil:

Oil confirm whether oil at the designated place. (See it picture)

1, The maximum oil level.

2, The lowest of oil. (See right picture)



### Recommended oil

-20° -10° 0 10° 20° 30° C



SAE 20W40 SF Engine oil

SAE 10W30 SF Engine oil

SAE 5W30 SF Engine oil



oil:

Total: 0.9L

Regular replacement of oil: 0.8L

Oil Filters replacement: Does deformation, damage

## TIRES

### 1. Tire pressure

Before the cars in operation, should always check and adjust tire pressure. (Tires Barometer)

### 2. Tire Inspection

Before the cars in operation, should check the tires. If excessive tire wear, to be replaced.

#### **Warning:**

- use of the tire wear is dangerous to travel

	size	pressure
Front tire	16X8-7	10PSi
Rear tire	16X8-7	10PSi
Front tire	19X7.00-8	10PSi
Rear tire	18X9.50-8	10PSi

# IMPORTANT ELEMENTS OPERATION AND RIDES

## Cold Start and engine preheating

Note: This car has used to control the operation of brake motor starter switch. Only in pinch engine brake handle on when to start. We had closed choke before delivery.

1. The ignition switch will turn to the " • " position.
2. Step on the rear brake pedal. (launched in order to prevent the car after forward)
3. The upward resistance throttle arm closed not to refuel the door.
4. Press the start switch.
5. The resistance after heat engine throttle arm downward completely open.



Note: If the engine can not start, should be released start switch, wait a few seconds, then try again, Each attempt, as far as possible in a short period of time in order to protect the battery Each starter not to exceed 5 seconds when the engine.

Note: In order to achieve maximum engine life, before moving to engine should always be preheated. Not on a Cold-engine acceleration.

## **Hot engine starter**

When the engine has been preheated, then you do not need closure resistance throttle.

## **Brake**

Running, when there are obstacles in front of that (pedestrians, vehicles, goods), in order to brake security measures must be taken. Divided into braking deceleration braking, parking brake and emergency brake.

### **1) The braking deceleration**

Braking is deceleration in the decrease throttle alone can no meet the requirements of deceleration taken under braking, under normal circumstances, only gently point stamping on the right foot after brake arm can be.

### **2) Parking brake**

Parking brake in the arrival at the destination. in order to accurately stop to stop in the position taken by the brake. before the brake or the rear brake can be. generally, when the speed is higher, with the rear brake, lower speed, brake before or after using brake

### **3) Emergency brake**

Emergency braking is in the face of unexpected emergency situations, in order to avoid incidents taken braking. then minded response to fast and cool followed by throttle ,the rear brake ,brake before the car stopped and bit. these order and spacing is necessary also to science. these moves

very short interval of time is almost at the same time.

## Shift and acceleration of engine

**If this vehicle just with 1 forward gear and 1 reverse gear, please do as follows.**

1. If you want to move forward just take the gear shift lever forward with a gear.
2. Open the accelerator slowly.
3. If you want to go backward, please take the gear shift lever back to neutral first, then go backward to reverse gear.
4. Open the accelerator slowly.

**If this vehicle with 3 forward gears and 1 reverse gear, please do as follows**

1. If you want to move forward just take the gear shift lever forward with a gear.
2. Open the accelerator slowly.
3. When to enter premier gear you need to close throttle valve. then put forward 1 gear after clutch apart.
4. Repeat process above, you can enter superior gears
5. If you want to go backward, please take the gear shift lever back to neutral first. then go backward to reverse gear.
6. Open the accelerator slowly.

**Note: Don't shift when you are riding, in order to prevent the risks. We must disengage the clutch first when you want to shift.**

## The acceleration engine

Because the cars use Automatic Clutch body, so acceleration and deceleration size only need to control the throttle on the up. According to the former right hand thumb of increased speed, deceleration is loosened.

## The commissioning Engine

0-1000 km from the motorcycle mileage during your life is very important for the period. Because the engine is new and in the meantime we must avoid prolonged Full Throttle or any situation that could be the super-engine overheating.

1, 0 -150 km: Operation and avoid prolonged refueling over 1/4 throttle position, An hour after the operation should cease engine to cool 5 to 10 minutes.

2, 150- 500 km: Operation to avoid refueling over 1/2 throttle position. At any time, should not be used Full Throttle operation of this vehicle.

3, 500-1000 km: To avoid refueling over 3/4 throttle position.

4, 1000 km long and more: Full throttle operation should be avoided. Avoid ultra-high speed engine work.

Note: When traveling to the 300 km 500km, the oil must be replaced. As the car had not been installed odometer to estimate mileage can only be calculated.

### **Parking**

When the car to stop, they should stop and pull out  
The engine ignition key.

the fuel valve turn to: "see right picture" position.

(If there is oil switch, please click it.)

### **warning:**

- Because after running and the exhaust muffler very hot, vehicles should be parked in child care and others not likely to encounter places.



## Regular maintenance and minor repairs

Periodic inspection and emphasize peace and lubrication and the car will at the best and most effective work state

Note: If you are not familiar with this vehicle maintenance services, the work should be Golden Wing maintenance station.

### Regular maintenance / lubrication

Item	Notes	Running-in 1000km or one month	Initial 3000km or three month	Every 3000km or three month
Spark plug	Heck their state, when necessary, should be cleaned or replaced	☆	☆	☆
Air filter	Cleaning. if necessary, should be replaced	☆	☆	☆
Carburetor	Die checks starting operation. if necessary, should be adjusted	☆	☆	☆

Fuel pipe*	Check whether the fuel for cracks or damage there. If necessary, should be replaced	☆	☆	☆
Oil filter*	Check the status, if necessary, should be replaced.		☆	☆
Engine oil	The replacement. (In the Engine prior to release oil preheating)	2000km and 3000km the first replacement	☆	☆
Engine oil filter* *	Cleaning. If necessary, adjust or replace	☆		
Tire/wheel	Check tire pressure /balance/Wear state/ poor place, if necessary, repair or replacement		☆	☆
Front hub Bearing*	Bearing components check whether loosening/ damaged. if damaged, and should be replaced**	☆	☆	☆
Rear axle bearing*	Bearing components check whether loosening/ damaged. If damaged,		☆	☆



	and should be replaced**			
Chain-driven	Check chain relaxation. If necessary, should be adjusted. cleaning and lubricating	☆	☆	☆
Parts/ fasteners	Check all the parts and fasteners. Necessary correction should be carried out	☆	☆	☆
Battery*	Check proportion. if necessary, the correction should be carried out	☆	☆	☆
Rear gear lubricant	Replacement. (in the engine prior to release oil preheating)	☆	☆	☆
Gearshift lubricant	Replacement. (in the engine prior to release oil preheating)	☆	☆	☆
Brake liquid	Once every two years to replace			
Brake liquid pipe	Once every four years, the replacement (if any breakage or leakage and replace			

Steering mechanism	Before each use should be checked and, if necessary, should be anchored.			
--------------------	--	--	--	--

\*: We propose that these items should be Golden Wing repair station for maintenance services.

\*\* : Medium weight wheel bearing grease.

## Parts/ Fasteners

Prior to the use of the car, should always check with the parts and fasteners tight degrees. We suggest that these projects should be carried out irregular inspections. (I asked, after the demolition of the self-locking nut Please replacement of the self-locking nut, as will the use of safety.)

### Correspondence tables fastening torque

Screw size	Fastening torque N/m	Standard torque N/m	Screw size	Fastening torque N/m	Standard torque N/m
M5	4.5-6.0	5	M10	37-79	60
M6	8-12	9	M12	73-115	99
M8	16-26	13	M14	146-205	180

# Oil

1. The measurement of oil (See left picture)

A. Engine preheater minutes.

B. When the engine stopped operating, hold on a few minutes later, the oil Cypriots will be removed after the oil-observation.

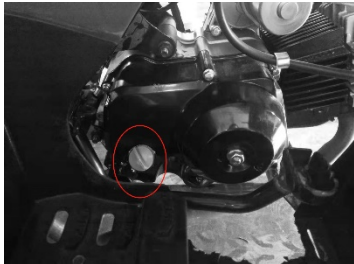
C. The oil should be located at the highest and the lowest among the oil-marker. If the oil level low, should be enough oil to rise to the oil-appropriate.

2. Oil and oil filter replacement of the replacement. (See right picture)

A. Engine preheater minutes.

B. Engine will stop. In an engine oil was placed underneath.

C. Discard release oil bolts, release oil. Put oil may moderate shaking body to be inside the engine from impurities.



D. Installed release oil bolts, and then full of engine oil. Tightening oil Cypriots.

E. Starting engine and a few minutes to preheat. Preheat should check whether there are oil spills. If it appears that an oil spill, should immediately stop engine and check reasons.

3. The replacement of oil in the second about a month or so to clean oil filters.

Warning:

- Do not join any chemical additives. Also lubricating oil clutch, clutch slipping and additives will.

Note: In the replacement of oil, must be in accordance with the following method to check oil pressure

1. Removed the cylinder covered with oil release boles.

2. Starter motors, and keep them idle until the oil outflow from caving hole. If no one minute after the oil outflow or unusual phenomenon, should stop the engine running to the nearest Golden Wing dealer or repair shop for repair.

3. After the test should be tightened release oil bolts.

## Carburetor adjustment

Carburetor is a key part of the car, the need for fine adjustment.8Most adjustments should be

entrusted with the expertise and experience Golden Wing dealers or repair shops.

## Idle adjustment



Idle speed adjuster screw

Release oil point

1. Connect speed
2. Speed Festival through idle screw on the carburetor, idling provisions set to rotate within the raise into the engine speed, to a decrease in engine speed from.

**Standard Idle:  $1500 \pm 150$  r/ min**

## Crankcase emission filter of the circulatory stem



1. The part works for 150 hours, please cleaning to make the part to use normally.
2. Take out filter of oil and gas separator, using gasoline or he to carry out the washing, and drying.
3. In the filter out, remember not to damage the filter.
4. The part may clean and use repeatedly in the non-damage's situation.
5. The part in use, will be regularly open sewage outfall for discharge, the user can also be observed at any time, please discharge the squalidity in accordance with the actual situation.

## Air Filters

Filter should carry out regular checks, cleaning. If necessary, replaced.

## The throttle cable adjustment



Locked nut

Adjuster

Note: In adjusting the throttle cable free trip before, we must adjust engine idling. Through rotational regulator to adjust throttle cable, it can lead to throttle the right hand free Filed doors itinerary.

Free trip:3 to 7 mm

1. Loosen lock nut.
2. Hinn into a regulator or until attaining the free trip.

## Spark Plug inspection

Model: D7RTC

Clearance: 0.6~0.7 mm

Torque: 12.5 N. M

The spark plug is an important engine parts, and easy to check. The state can spark plug of the engine that state.

The normal riding in the car, in the center electrode white ceramic insulators around the ideal color is appropriate. Brown. Do not attempt to self-diagnosis of any fault, and should be sent to Golden Wing the car dealer or repair shop. You must be regularly removed and examined spark plugs, as heat and carbon deposition will spark plugs slowly breakdown and ablation. If the electrode ablation too seriously, we must use the provisions of its spark plugs will be replaced.

Before installing the spark plug, the regulation should be used to measure the thickness electrode gap, if necessary, will be adjusted to space requirements value.

Note: If you have not installed when the spark plug torque wrench, torque correct estimation method is tightening its hand to exceed 1/4 to 1/2 laps.



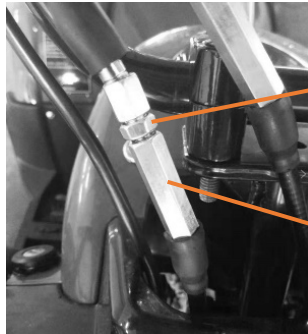


## The front wheel brake adjustment

The front wheel brake handle free trip for 10-15 mm,

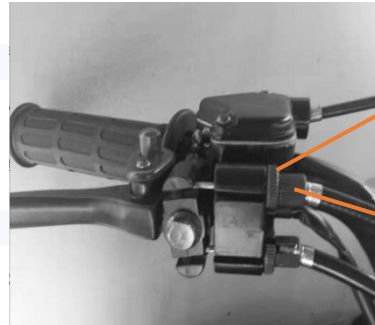
1. Loosen lock nut
2. Rotation cable length regulator screw or screw into the appropriate date and up.
3. Tighten the lock nut.

When the brake handle and can not be used to appropriate requests lease Golden Wing commissioned b he dealer or repair shop to adjust rake shoes.



Locked nut

Adjuster



Locked nut

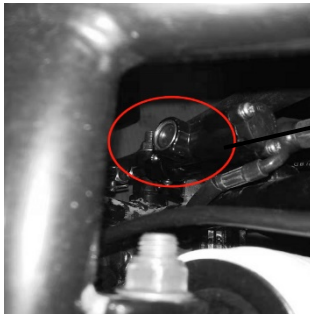
Adjuster

## Rear disc brake

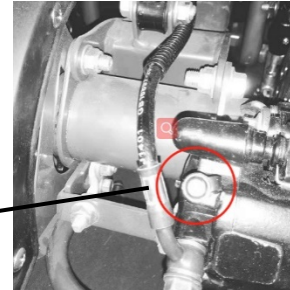
Brake oil:

The brake oil crock must be kept between the upper and lower mark. The brake friction must be checked to see if it is damaged once the limit depth, then there may be leakage in the brake oil crock. You should turn to the after-sale service station for inquiry.

If brake oil is ok, adjusting the air nut, let air education the down-pump, then lock the nut.



Oil-amount view windows



Adjusting bolt(air bolt)

Brake friction:

During the maintain period, the abrasion can be examed by eye. Once either friction pads is worn the limit depth, replace both pads in time. The tube and lining fitting must be examed to ensure that the brake oil never be leakage.

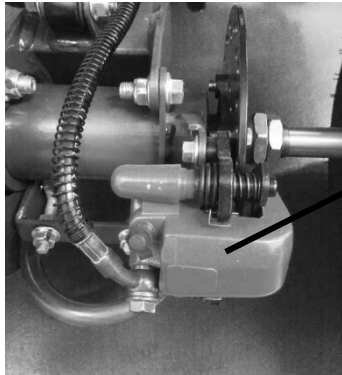
Repeat this procedure until the parking brake is properly adjusted

Brake friction:

During the maintain period, the abrasion can be examined by eye. Once either friction pads is worn the limit depth, replace both pads in time. The tube and lining fitting must be examined to ensure that the brake oil never be leakage.

Brake lining:

The main points for checking brake lining are to see whether the lining pad is worn out of the limitation range. Replace the brake lining if the lining wear is beyond the brake wear limit mark.



Brake pump

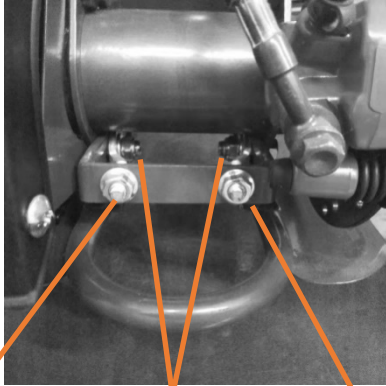
## Driving chain relaxation of inspection

Note: rotating wheel several times to identify the most compact location of the chain. When the chain in the most compact position, check or adjust chain relaxation.

The normal relaxation of 10 to 20mm. If relaxation beyond 20 mm should be adjusted.



## The drive chain adjustment



Adjuster      Setscrew      Adjuster

Forward and rear axle into. The same should be fully rotate the regulator of the M6 and the prevention of arti-retreat pine Nut Nut. pian would maintain coaxial.

3. In the adjustment, must tighten all loosen the parts.

4. In the adjustment, the chain must tighten regulation of the fixed screws and mats.

Note: chain relaxation too small engines and other key will zero overloading, Relaxation should be made to maintain the prescribed limit scope.

1. Loosen the fixed chain adjuster screw and nut.

2. For tensioning chain, the chain by rotating clockwise direction on the M8 regulator anti-retreat pine nut and nut. If required relax chain, according to the direction of rotation 10,000 antichain adjuster on the M8 and the prevention of anti-retreat Pine Nut Nut.

## The drive chain lubrication

The chain includes many mutual operation of the parts. If the chain would not carry out proper maintenance, the chain that will soon wear. Therefore, we must carry out regular maintenance of the chain. In this dusty region riding car, the more maintenance is necessary.

1, May use any brands of spray-chain lubricant, First, the use of brush or cloth to remove all the dirt and mud masonry. Then two. rows of siding between the center and all spraying lubricant on the roller.

2. For cleaning chain, will be removed from the board, the Baptist in solution should as far as possible removal of masonry scale. The chain removed from the solution and make it dry. The chain lubrication will be carried out immediately to prevent corrosion.



## Throttle limited & parking function

Please use parking button when you are parking, see picture.

1. Fasten front brake
2. Press parking button

Left picture throttle limited nut.

- (1) adjust screw
- (2) lock nut
- (3) parking button



parking button

adjust screw

lock nut

adjust screw. parking button adjust nut

## Battery

Check the battery voltage and see if the terminals are tightened. If the voltage is lower than 12V, it needs to be charged in time. Poorly maintained batteries will discharge and cause the batteries to be scrapped.

Note: The battery voltage should be checked at least one time per month.

Warning:

- When using the battery, it should be charged within 30 minutes and cooled to home-inside temperature to ensure battery used in right way.
- battery would have exploded gas. Should stay away from sparks, flames, cigarettes, and so on, in or rechargeable battery sealed in a space, ventilation should be maintained. Near the battery should always work to protect your eyes
- should be placed in child care could not get places.
- When the battery will not be used for a month or longer, take out the battery and put it in a cool place.
- The battery should be fully charged before use. If the storage time of the battery exceeds the above time, at least check the specific gravity of the battery
- Once per month, charge the battery when the battery is too low.
- When putting the battery back into your atv, make sure that the wiring is connected correctly

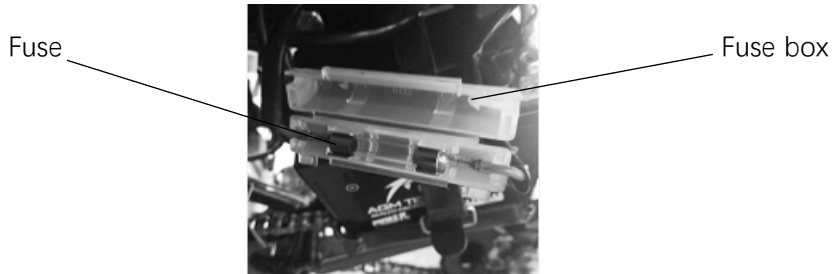




## The replacement Fuse

1. Fuse at the top of batteries.
2. If the fuse. customs breakpoint fire Switches and circuit Switching problem. With the correct installation of the new ampere fuse. Connect the switch and watch the work of electrical Installations. using immediately if the fuse again, please Golden Wing dealer or repair shop contact

Warning: Do not use the recommended ampere rating higher than the use. Under the correct rating is the fuse will cause large-scale damage to electrical system and will cause the fire  
Provides fuse: 10 amps



## Common problem

Problem instance	reason		Solve way
Hard start or could start	1.no mixed gas in cylinder	Leaking for intake system	screw down on sealed point
		Oil way plugged up	scatter
	2.heap fuel in cylinder		Open spark plug, clean fuel
	3.fuel has water or dirty		Clean fuel tank, carburetor, change fuel
	4.cylinder compression low	Spark plug leaking	Screw down spark plug
		Leaking on the sealed point between cylinder cover and cylinder body	Clean it, install gaskets, screw down nut
		Crankcase leaking	Renew crankcase or sealed glue of crankcase
		Piston ring or cylinder body wear	Renew piston ring or cylinder body

Hard start or could start		and tear heavy	
		Piston ring broke off or block	Renew piston ring or clean it
	5.exhaust block	Exhaust of cylinder or vent-pipe is dirty	clean it
	6.mixed gas is thick or thin		Adjust carburetor
	7.spark plug problem	Spark plug is dirty	Clean it with gas
		Insulator of spark plug broke	Renew or adjust
		Space of spark plug is too big or small	Renew or adjust
	8.magneto problem	Low-press wire is short circuit or turnoff	Find it, repair or renew
		Ignition broke	renew
		Ignition coil	renew
	9.noegough battery (hard start)		Remove and
	10.foot start could work		Repair or renew

Hard start or could start	11.E-start	Rotor of e starter couldn't work	renew
	12. other device couldn't work		Check and repair
Engine Is instability	1.ignition touch is not good		Connect again
	2.electrode of spark plug is dirty		Clean if
	3. all circuits block up		scatter
	4.clutch skid		Repair or renew
	5.mixed gas is thick or thin		Adjust carburetor
	6.engine oil is not enough		Add engine oil
	7.vent-pipe block up		clean
Engine couldn't work	1.fuel couldn't feed (circuit block up)		Check oil switch, carburetor et cetera , repair if
	2.break off		Check wire from spark plug to magneto
	3.cylinder broken heavy, piston dead		Repair or renew
	4.join bearing dead		Repair or renew
	5.engine leaking		Check, repair
	6.vent-pipe block up		scatter

Bike is shaking heavy	1.spring of suspension break off	renew
	2.suspension bend	renew
	3. suspension leaking	renew
	4.bearing of wheel broke	renew
Running direction is instability	1.parts of director handle if tight or loose	Check them
	2.tire press is not enough	Check them
	3.frame, suspension install is improper	Install again and adjust
	4.axes is easy to move	adjust
Brake couldn't work	1.shoes of rear brake wear and tear heavy	renew
	2.barke cam wear and tear	renew
	3.front, rear brake pull cable broke	renew
	4.space of front, rear wheel is too much	renew

# CLEANING

1. In order to keep the car clean and protect the surface appearance of the painting, electroplating, should regularly or irregularly be cleansing. When cleaning, use of external surface water irrigation, rush soil Use a soft cloth or sponge dip cleaning liquid bubble gently cleans the outer surface, to avoid residual gravel surface and paint scratches electroplating layer. Finally reuse water for irrigation.

2. Attention:

- washing, to avoid using the high-pressure water erosion under parts:

(1) Ignition switch;

(2) Multi-purpose switch;

(3) Below cushion;

(4) The exhaust pipe muffler exports;(5) air filter inlet

After the car wash thoroughly dry, and then start engine, running for a few minutes. Finally repeatedly braking performance brake inspection and adjustment until braking performance standards so far.

Special Note: in the hot engine, the first will not wash. Engine room temperature with the same question again when cleaning. If water pressure caused the brake, the former damping seals and electrical parts Loss.

# STORAGE

If the car does not need to be used for a long time, in order to maintain a good state of the car, you please address the following methods:

1. Select the right parking place. The location should have security, ventilation, moisture-proof, anti-freezing conditions.
2. For engine lubricants.
3. In the fuel tank and the carburetor fuel release all net. oil stored properly.

Note: Do not overlook the release carburetor net residual oil. Otherwise, no need for a long, time, the surface of the plastic fuel carburetor of holes to plug, re-use of the car when trouble

Warning: volatile fuel in the fuel emissions, the engine must be stopped operating in the ventilation good place to prohibit smoking ban on the use of open flame and sparks objects.

4. In order to prevent cylinder rust, we should adopt the following measures:

Remove spark plugs, A Spoonful (15-20 mL) from the clean engine oil into the cylinder spark plug hole with a piece of cloth spark plug, holes starter motors, mobile number to Detroit from top to bottom so that the oil in the cylinder wall are cloth. Finally, the spark plugs and spark plug cap installed.

5. Battery demolition down, stored in antifreeze, sunscreen, and other items collision difficult places. Every two weeks an additional charge



6. Wash and dry your car, paint waxing to all, to all chrome painted on the surface antirust oil.
7. To inflatable tires, tire pressure up to the required standard air pressure. After stopping the car will be good, with shelves or pieces of wood and other wheels will be boosted so that the wheel does not contact with the ground
8. Will cover the car to prevent the dust down. Do not use plastic sheeting to things such as gas-tight coverage, as there are for the mechanical vapor corrosion.

## Transport

1. Vehicles should be solidly fixed on the transporters, there should be effective rain preventing measures. without bumps and damaged phenomenon happen.
2. The packing carton shall not be tilted on the way of delivery.

## AFTER THE RE-USE STORAGE

1. Remove the guards cover the car, clean the body. If placed more than four months, the need for replacement of engine oil.
2. The battery will be sufficient to re-installed on board.

3. Add fuel to the fuel tank.
4. All of the pre-inspection lane.
5. Before traveling during the next regular session, a choice open, pedestrian areas for less performance inspection, confirmed properties normal traffic could resume normal.

## MAIN SPECS

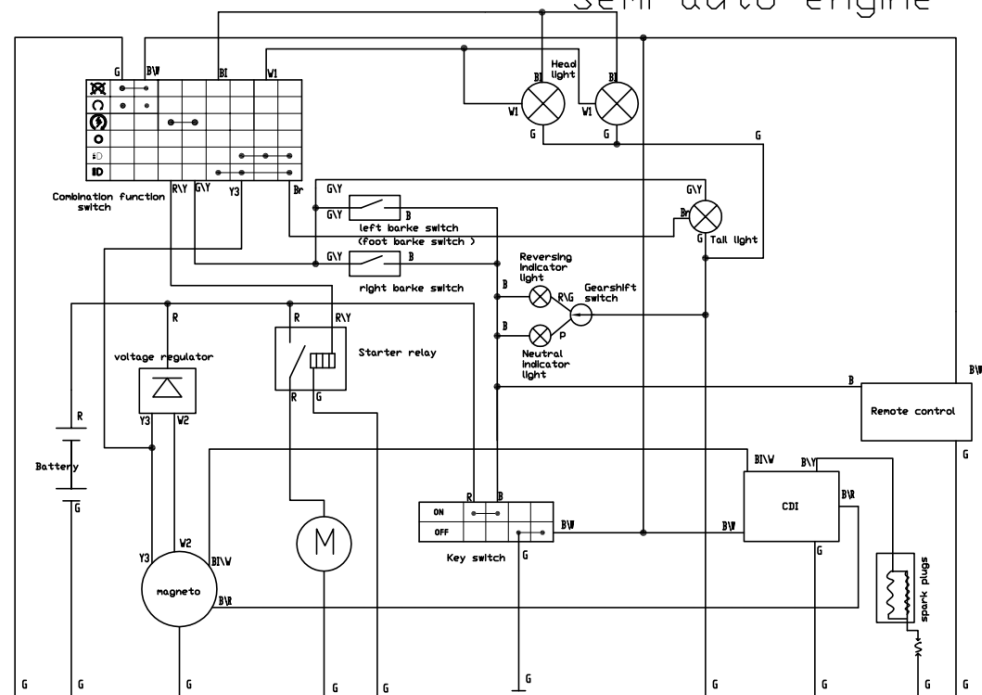
Model Number:	RIDER		BULL	
Engine Type:	Single cylinder, 4-stroke, air-cooled		Single cylinder, 4-stroke, air-cooled	
Displacement:	106.7	119.6	106.7	119.6
Number of cylinders:	1		1	
Max Torque:	6.9N.m/6500r/min (N.m/r/min)	6.9N.m/6500r/min (N.m/r/min)	6.9N.m/6500r/min (N.m/r/min)	6.9N.m/6500r/min (N.m/r/min)
Max Power:	4.8kW/8500r/min (kW/r/min)	5.5kW/8500r/min (kW/r/min)	4.8kW/8500r/min (kW/r/min)	5.5kW/8500r/min (kW/r/min)
Bore Stroke:	52.4x49.5mm	52.4 x 55.5mm	52.4 x49.5mm	52.4 x 55.5mm
Compression ratio:	9.0:1	9.6:1	9.0:1	9.6:1
Cooling system:	Air cool		Air cool	
Spark plug valve:	0.6-0.7MM		0.6-0.7MM	
Carburetor type:	PZ20		PZ20	
Ignition:	CDI		CDI	

Lubrication type:	Pressure spatter	Pressure spatter
Lubricant type:	SF 10w/40	SF 10w/40
Idle speed:	1500± 150 rpm	1500± 150 rpm
Starting System:	Electric	Electric
Battery:	12V, 5Ah	12V, 5Ah
Clutch:	Auto clutch	Auto clutch
Transmission:	Chain, rear wheel drive	Chain, rear wheel drive
Brakes Front/Rear:	Hub/hydraulic disc	Hub/hydraulic disc
Tires Front/Rear:	16 x 8.0-7 / 16 x 8.0-7	19 x 7 – 8 / 18 x 9.5 – 8
Fuel Capacity:	2.2L	2.2L
Weight:	(N.W./G.W) 98kg/118 kg	(N.W./G.W) 107kg/131 kg
Max Load:	65kg	65kg
Wheelbase:	855mm	960mm
Dimensions:	1,490 x 910x 900mm	1560 x 970 x 940mm
Height to Seat:	630mm	700mm
Min. Ground Clearance:	70mm	140mm

# ELECTRIC DIAGRAM

Semi-auto engine

Note	Color
B	Black
G	Green
Br	Brown
R	Red
Bl	Blue
P	Pink
W	White
Y	Yellow
Bl/W	Black/White
Bl/Br	Black/Brown
Bl/W	Blue/White
Bl/Y	Black/Yellow
R/Y	Red/Yellow
G/Y	Green/Yellow
W2	White 2
R/G	Red/Green
W1	White 1
Y3	Yellow 3





## WARNING

Improper ATV use can result in SEVERE INJURY or DEATH.



ALWAYS USE  
AN APPROVED  
HELMET AND  
PROTECTIVE  
GEAR



NEVER USE  
ON PUBLIC  
ROADS



NEVER CARRY  
PASSENGERS



NEVER USE  
WITH DRUGS  
OR ALCOHOL

### **NEVER** operate:

- Without proper training or instruction.
- At speeds too fast for your skills or the conditions.
- On public roads-a collision can occur with another vehicle.
- With a passenger-passengers affect balance and steering and increase risk of losing control.

### **ALWAYS:**

- Use proper riding techniques to avoid vehicle overturns on hills and rough terrain and in turns.
- Avoid paved surfaces-pavement may seriously affect handling and control.

**LOCATE AND READ OWNER'S MANUAL.  
FOLLOW ALL INSTRUCTIONS AND WARNINGS**