

## RFC2000

RFC2000-1: GPO, DC to 40 GHz



Female

Male

RFC2000-4: K, DC to 40 GHz



Female

Male

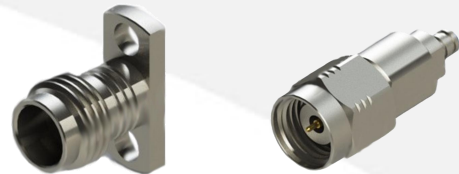
RFC2000-2: GPPD, DC to 67 GHz



Female

Male

RFC2000-5: V, DC to 67 GHz



Female

Male

RFC2000-3: SMA, DC to 26.5 GHz



Female

Male