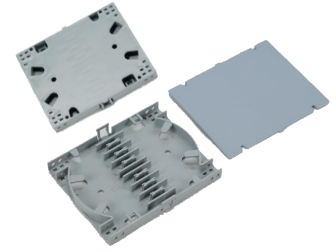


1303 Fiber Tray

FT2000



4/6/8/12 Core Fiber Optical Splice Tray

The splice tray is assembled in the fiber optic cable exchange box. One part of the fiber and pigtails of the optical cable are spliced for connection path scheduling, and the other part is directly connected to other optical cables (direct fusion). The splice tray is each optical fiber, which can be connected to each other at will.

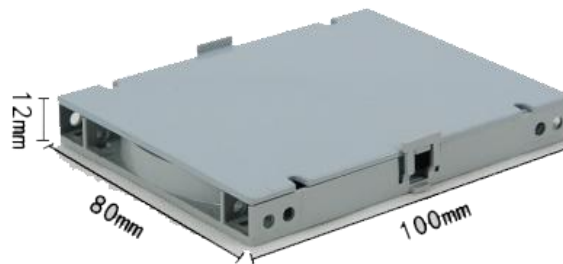
FEATURES

- Flame Retardant
- High Strength
- Long Anti-aging Time
- Can Be Stacked
- Built-in Fixed Card Slot

USE IN

- FTTH Access Network
- Telecommunication Networks
- Data Communications Networks

MECHANICAL DRAWING



No. of Fiber	4/6/8/12
Material	ABS Plastic
Weigth	0.05 kg
Dimension	100x80x12 mm
Storage Temperature	-40°C to +85°C

Order notes to our customers: The default parameters are as follows. For special needs, please contact sales.

1) Connector FC/APC, 900 um, 1 m by default for all devices except for high power devices.

2) Slow axis working, fast axis blocked, connector key is aligned to slow axis by default for PM devices.