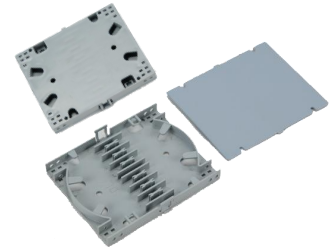


1203 Fiber Tray



4/6/8/12 Core Fiber Optical Splice Tray

The splice tray is assembled in the fiber optic cable exchange box. One part of the fiber and pigtails of the optical cable are spliced for connection path scheduling, and the other part is directly connected to other optical cables (direct fusion). The splice tray is each optical fiber, which can be connected to each other at will.

FEATURES

- Flame Retardant
- High Strength
- Long Anti-aging Time
- Can Be Stacked
- Built-in Fixed Card Slot

USE IN

- FTTH Access Network
- Telecommunication Networks
- Telecommunication Networks
- Data Communications Networks

No. of Fiber	4/6/8/12
Material	ABS Plastic
Weigth	0.05 kg
Dimension	100x80x12 mm
Storage Temperature	-40°C to +85°C