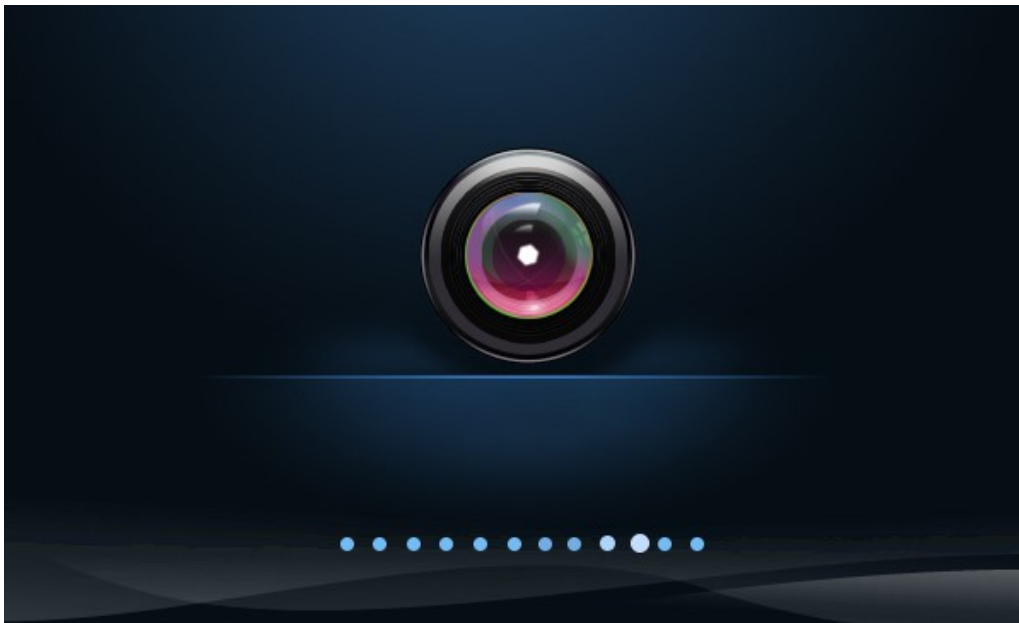


120M H.265 AV over IP Extender work with CMP System

Max resolution 4K@30HZ,4:4:4

Support Video Wall, Multi Viewer, Matrix

OPERATION MANUAL



Catalogue

Dear Customer.....	3
1. Features.....	3
2. Specifications.....	3
3. Package Contents.....	3
4. Panel Descriptions.....	4
4.1. Encoder:.....	4
4.2. Decoder:.....	4
5. Application:.....	5
6. CMP System:.....	5
6.1. Installation process description:.....	5
6.2. Registration and login platform.....	8
6.2.1. Registration.....	8
6.2.2. Login.....	8
6.2.3. Retrieve the Password.....	9
6.2.4. Enter CMP System.....	9
6.3. Add Device Instruction.....	10
6.3.1. Specific steps.....	11
6.4. User Management Instruction:.....	20
6.4.1. Create Account:.....	20
6.5. Live Preview Instruction:.....	22
6.6. Basic Instruction:.....	24
6.6.1. Select Language:.....	24
6.6.2. OSD Switch:.....	24
6.7. Video Scheme Instruction:.....	25
6.7.1. Matrix Configuration.....	25
6.7.2. Screen Divide:.....	26
6.7.3. Screen Splice:.....	27
6.7.4. KVM/IR/RS232 configuration:.....	30
7. WEB Instruction:.....	32
7.1. Change the IP address of your PC.....	32
7.2. System Setting:.....	33
7.3. Network configuration.....	34
7.4. Audio configuration.....	35
7.5. Video configuration.....	36
7.6. OSD configuration.....	37
7.7. Time configuration.....	37
7.8. Video Wall.....	38
MAINTENANCE.....	39
PRODUCT SERVICE.....	39
WARRANTY.....	39

Dear Customer

Thank you for purchasing this product. For optimum performance and safety, please read these instructions carefully before connecting, operating or adjusting this product. Please keep this manual for future reference.

1. Features

- Compression Technology: H.265
- Max resolution 4K@30HZ YUV 4:4:4
- Latency Time (from TX to RX) less than 200 millisecond
- Transmit up to 120m over single Cat5e/6 cable, with 1x looping HDMI output
- Request for (many to many mode) IGMP Switch
- Support IP/ICMP/IGMP/TCP/UDP Control (PC Tool)
- Support KVM RS232, IR, Local HDMI output on TX
- Additional Features VLC / Looping HDMI output
- Support RTSP/RTMP protocol
- Support Video Wall, Multi Viewer, Matrix work with CMP system supports real-time switch OSD; Displaying firmware version, IP address, MAC address, etc
- Support Multicast(one to many, many to many), Unicast (one to one)
- DC12V Power supply

2. Specifications

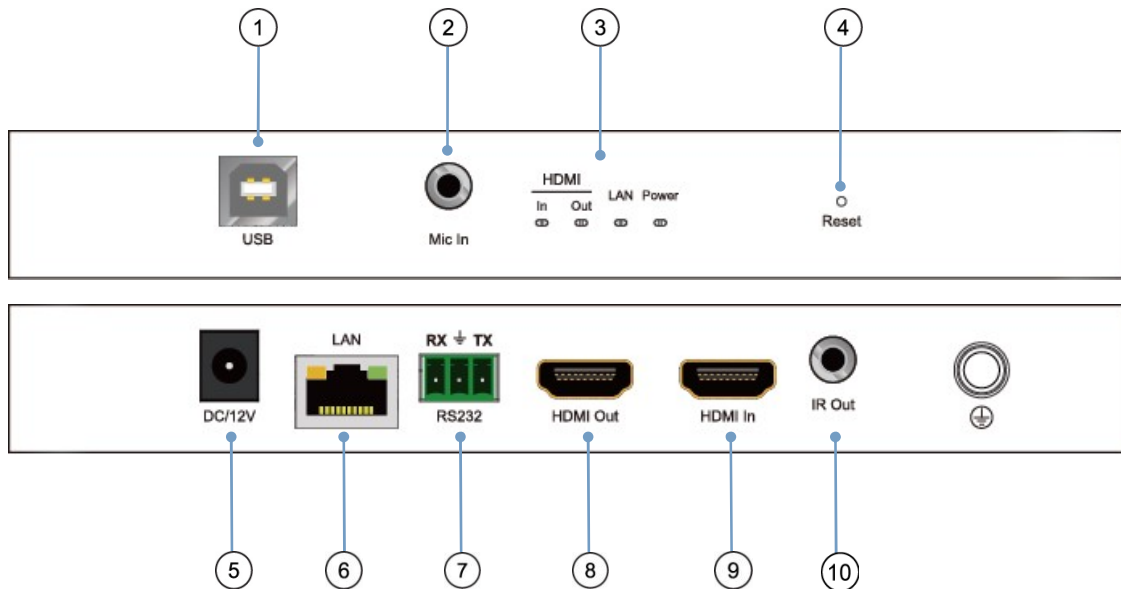
Performance	
Protocol	H.265 Encoder over TCP/IP
Video format	480P/720P/1080P/4K2K/800*600/1280*1024@60hz etc
Audio format	Analog Embedded and Analog Extractor
Streaming Bit Rate	0-100Mbps Default: 20Mbps
IR frequency	38Khz
RS232 Baud Rate	115200
IP SETTING	
Request for Switch/Router	Support IGMP, support DHCP
Environmental & Power Requirements	
Operating temperature	-5 to +35 °C (+23 to +95°F)
Operating Humidity Range	5 to 90%RH (No Condensation)
Power supply	12V1A Support POE
Power consumption	TX: 4.68W; RX: 3.36W
Dimension	TX&RX: 184*95*24mm
Net Weight	TX: 465g; RX: 465g

3. Package Contents

- 1). Main Unit Encoder and Decoder x1
- 2). Power Adapter DC12V1A x2
- 3). IR TX cable X1; IR RX cable X1; Phoenix terminal x2; Fixed Hanger x4
- 4). Disk (PC TOOL; User manual; Update software; CMP system) x1

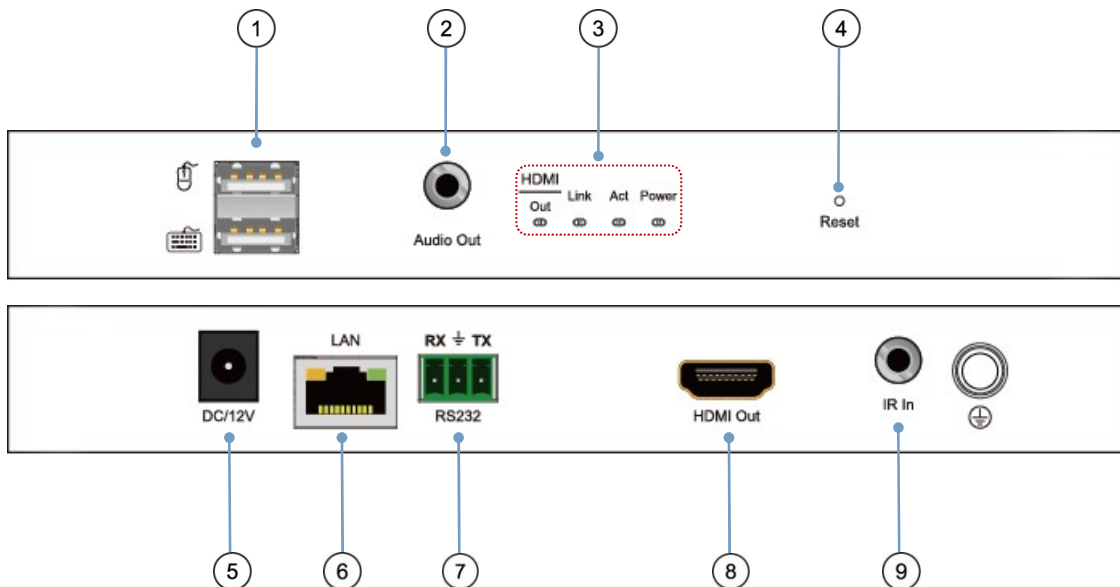
4. Panel Descriptions

4.1. Encoder:



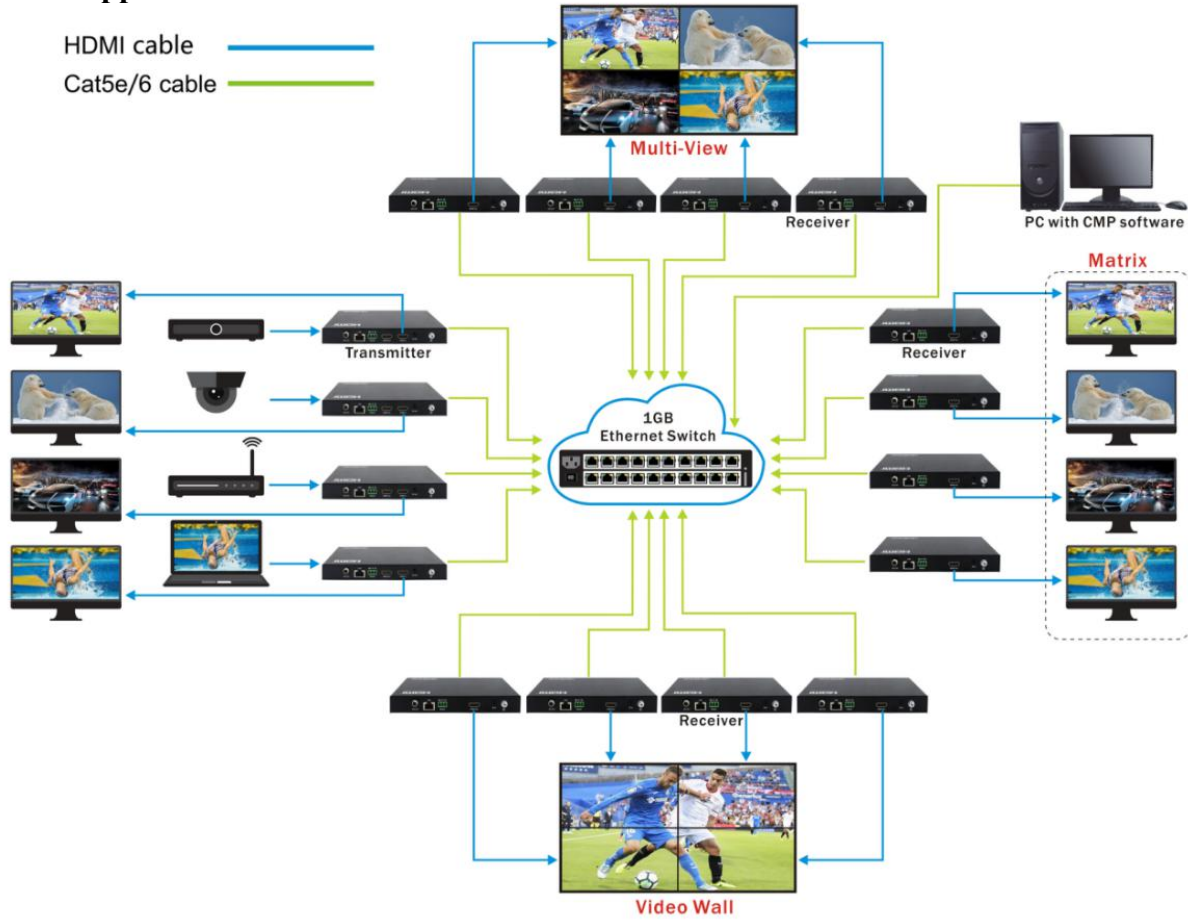
- ① USB Type B input
- ② Analog Input
- ③ Indicator of HDMI; LAN; Power
- ④ Reset button
- ⑤ DC/12V input
- ⑥ Cat5/6 output
- ⑦ RS232 pass through
- ⑧ HDMI Loop output
- ⑨ HDMI Input
- ⑩ IR out

4.2. Decoder:



- ① USB Type A output
- ② Analog Output
- ③ Indicator of HDMI; Link; Act; Power
- ④ Reset button
- ⑤ DC/12V input
- ⑥ Cat5e/6 input
- ⑦ RS232 pass through
- ⑧ HDMI output
- ⑨ IR input

5. Application:



6. CMP System:

6.1. Installation process description:

Before connecting the product, copy "CMP plate-setup" from the CD, double-click the software in the installation package to run, and install the platform on the computer.

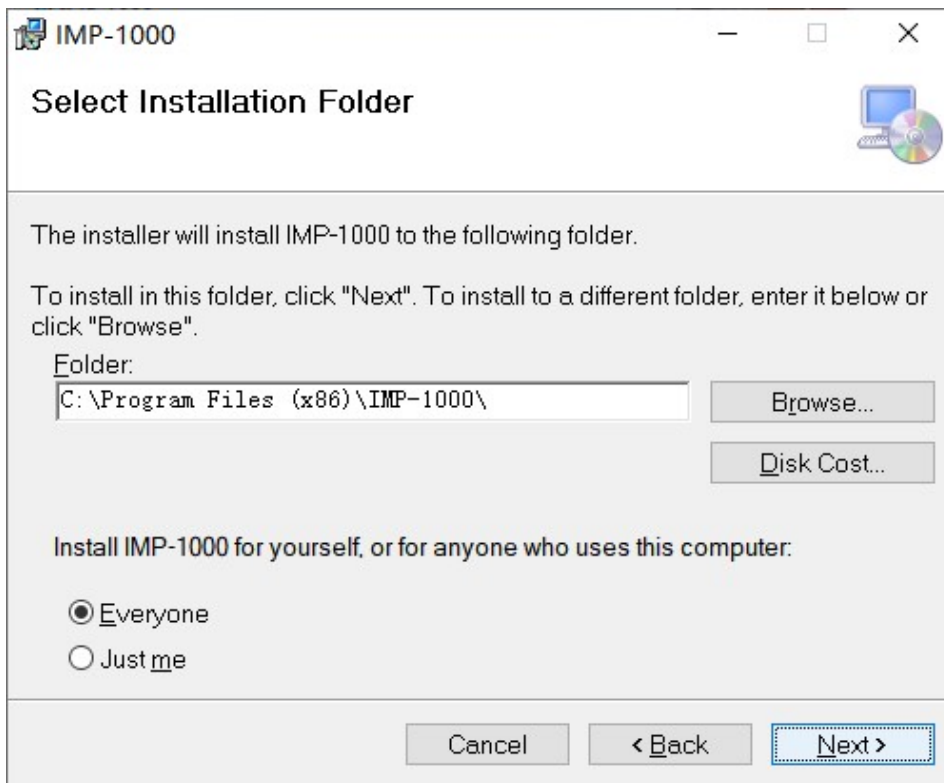
Take Win7 operating system as an example, the installation process is as follows



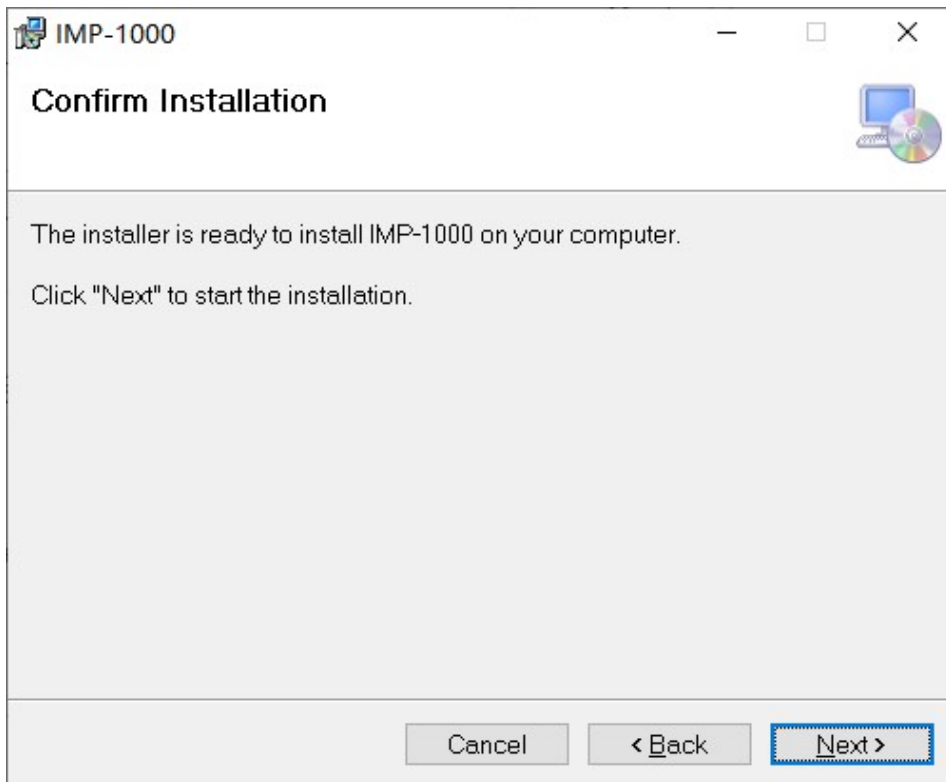
CMP (P1)



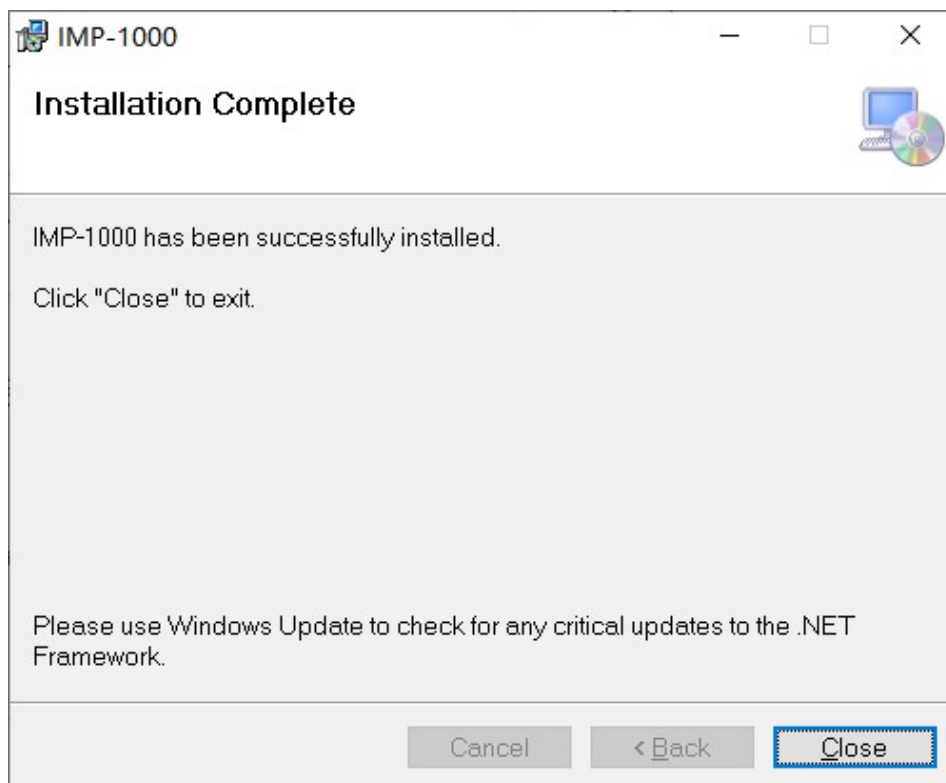
CMP (P2)



CMP (P3)



CMP (P4)

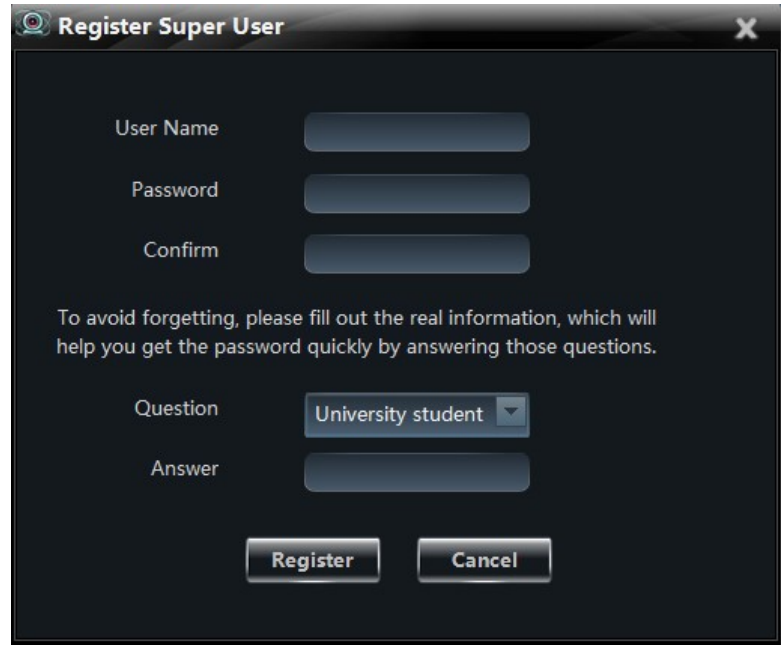
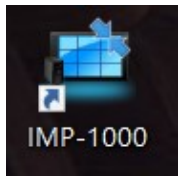


CMP (P5)

6.2. Registration and login platform

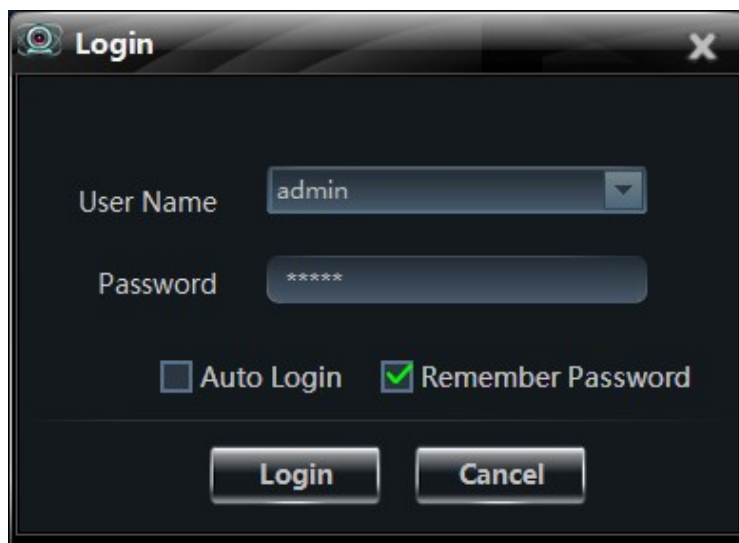
6.2.1. Registration

Double-click the mouse to open imp-1000 integrated management platform, and the registration window will pop up when it is opened for the first time. Enter username, password, confirmation password, and any questions and answers. To retrieve the password if you forget.

A screenshot of the 'Register Super User' dialog box. It has a dark background and a title bar with a close button. The form contains the following fields: 'User Name' (text input), 'Password' (password input), 'Confirm' (password input), 'Question' (dropdown menu with 'University student' selected), and 'Answer' (text input). Below the fields is a paragraph of text: 'To avoid forgetting, please fill out the real information, which will help you get the password quickly by answering those questions.' At the bottom are two buttons: 'Register' and 'Cancel'.

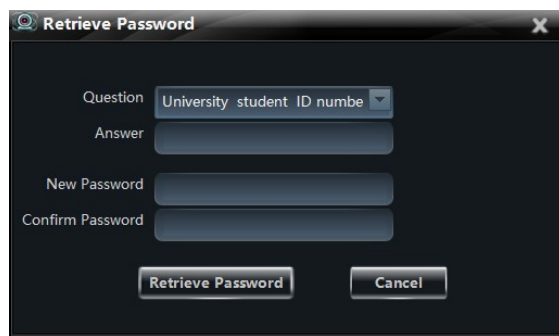
6.2.2. Login

After registration, the login interface will pop up, enter the registered user name and password, and you can choose to log in automatically or remember the password. Click login to log in to the main interface of the platform.

A screenshot of the 'Login' dialog box. It has a dark background and a title bar with a close button. The form contains the following fields: 'User Name' (dropdown menu with 'admin' selected), 'Password' (password input with '*****' visible), and two checkboxes: 'Auto Login' (unchecked) and 'Remember Password' (checked). At the bottom are two buttons: 'Login' and 'Cancel'.

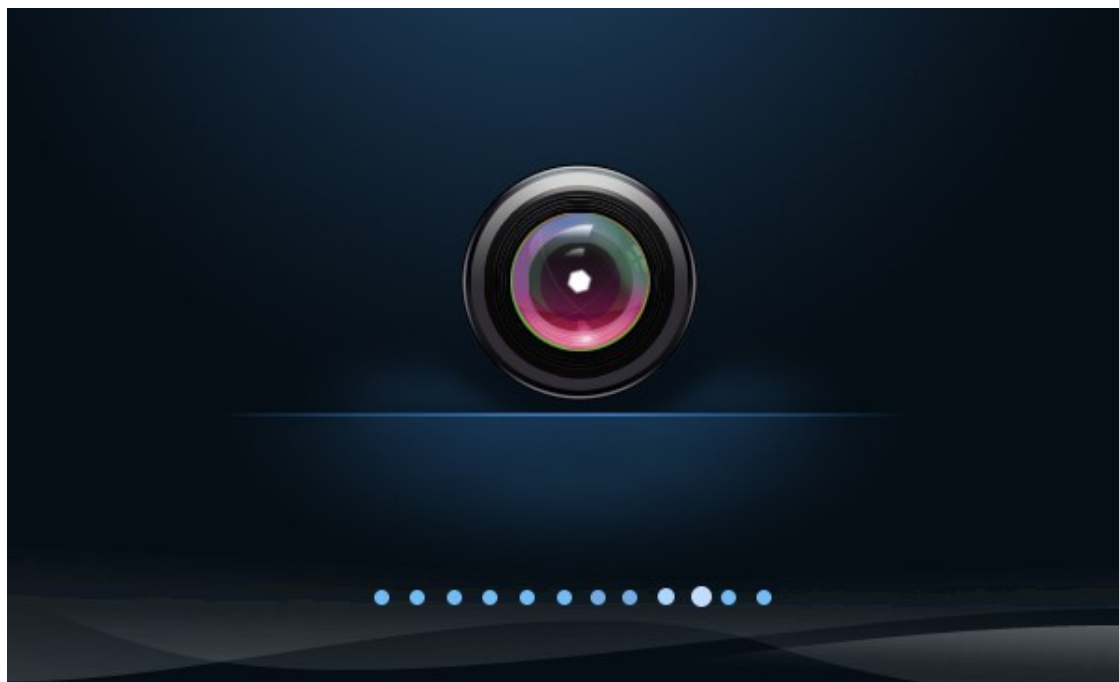
6.2.3. Retrieve the Password

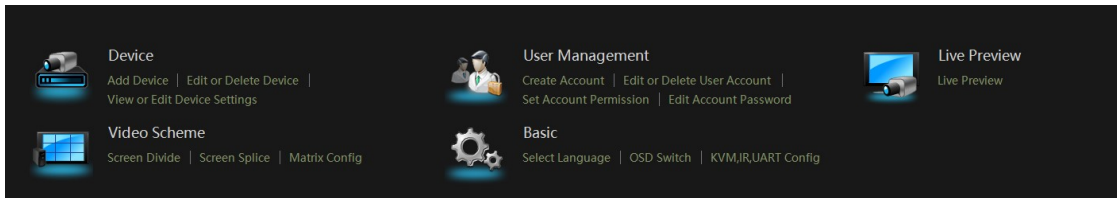
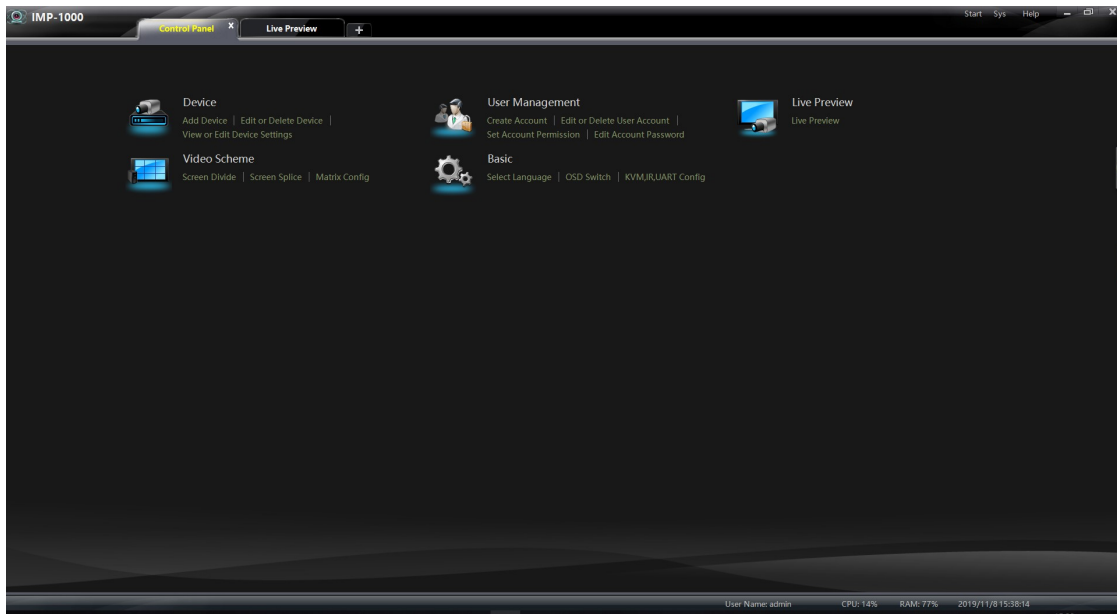
If you enter a wrong password or forget your password in the login interface, the system will automatically pop up a prompt to retrieve your password. You can enter the password retrieval interface, enter the answer to the question you filled in during registration, and reset your password.



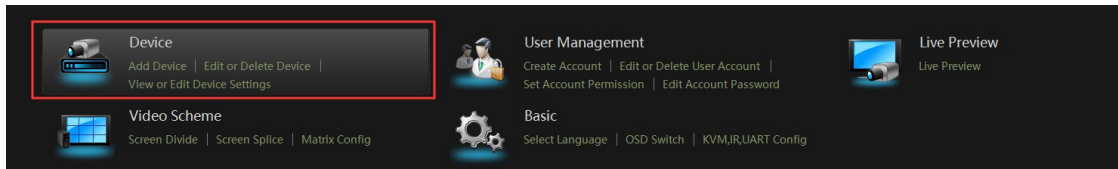
6.2.4. Enter CMP System

Enter the user name and password correctly and enter the main function interface.





6.3. Add Device Instruction



According to the above diagram, connect the products to the switch. And the router LAN port is connected to the switch through the network cable. And the network property IPV4 is set as automatic acquisition. Because the product default DHCP is ON, the router DHCP address pool can automatically assign IP addresses to the product and computer. Then the computer can open the software platform to manage and operate.

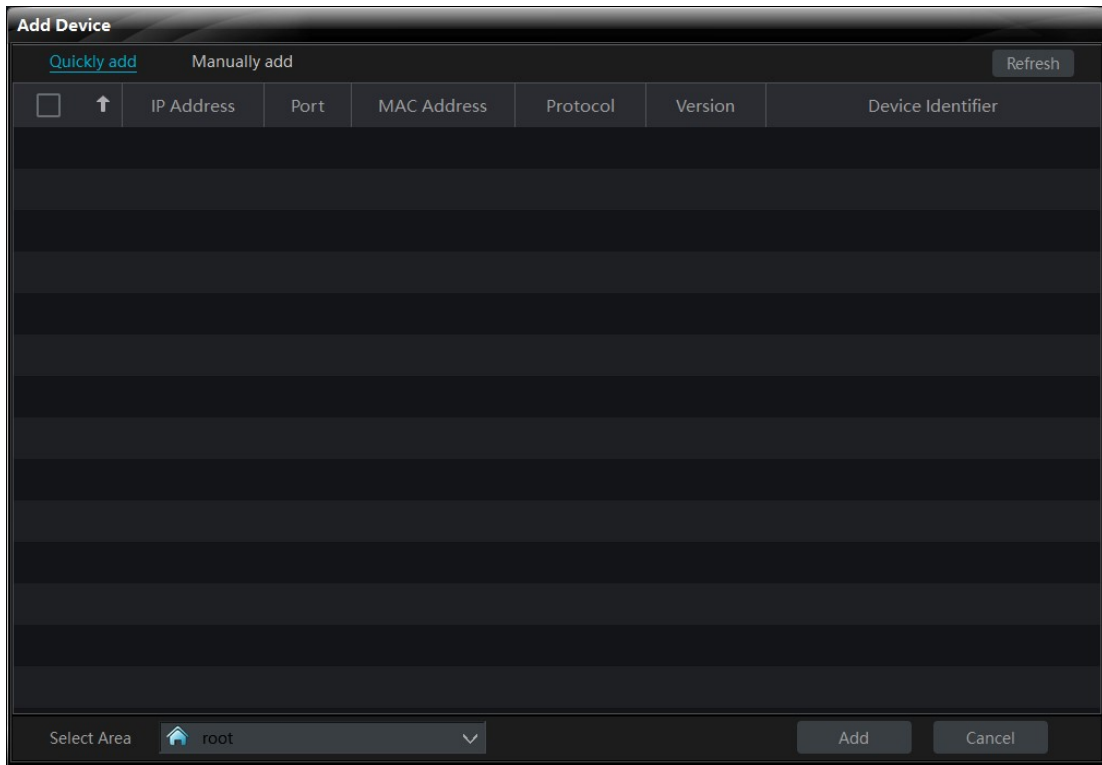
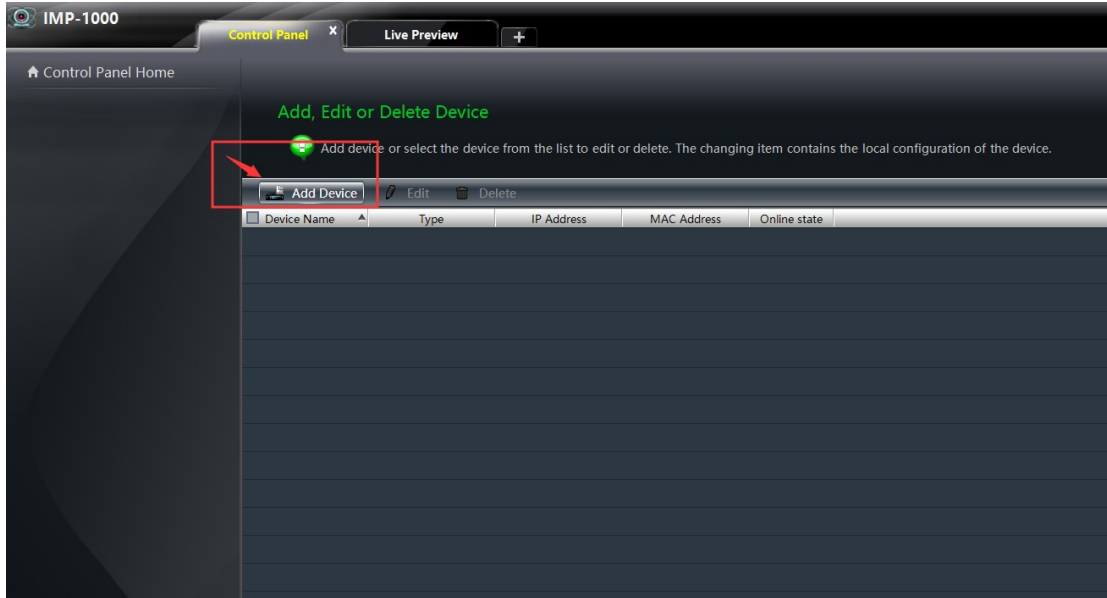
To login to the platform for the first time, click add device in device management, and you can choose to add device quickly (automatically scan all devices in the regional network) or manually. Quick add only need to check add, manually add need to input network parameters and other settings can be successfully added.

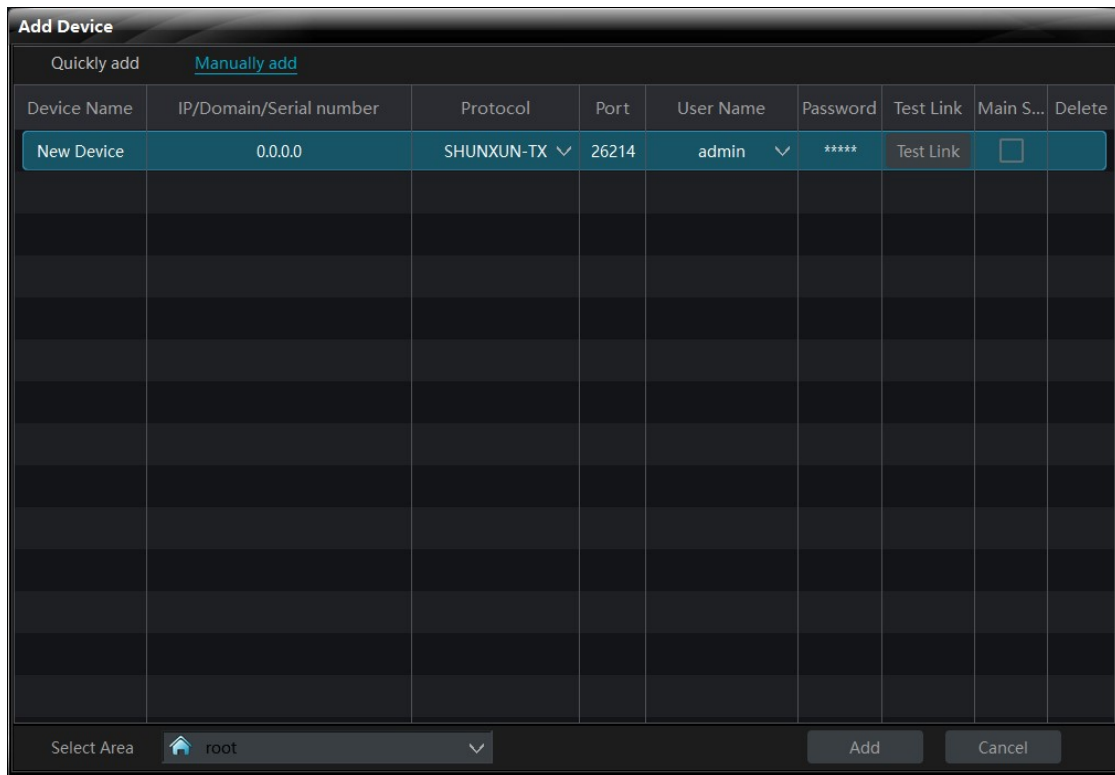
6.3.1. Specific steps

3.1 Open the software of the control platform, enter the account and password, enter the verification into the main interface, and click "Add Device" with the mouse.

Quick add: Click refresh key will automatically search all product IP address in LAN

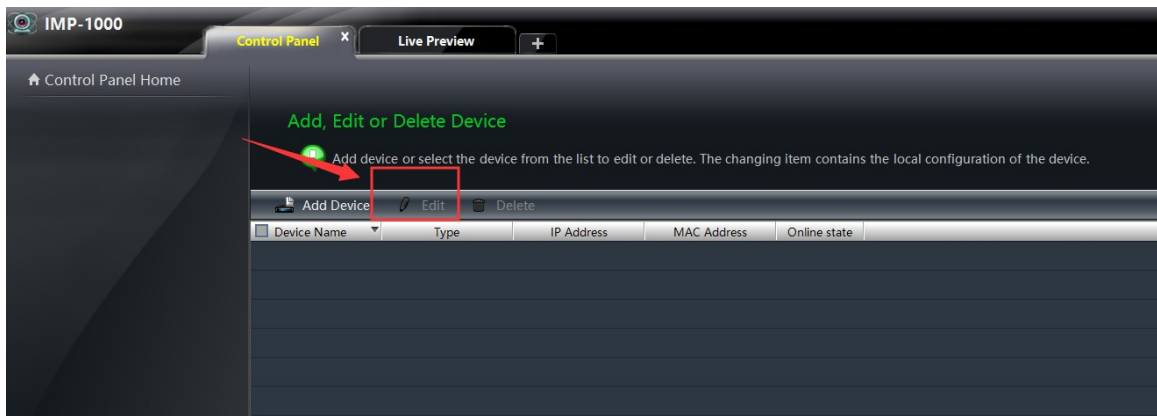
Manually add: Enter known IP address, protocol (TX/RX), port, default username/password admin.
Enter the correct IP address and other parameters by clicking "test connection" to ensure that the device added is correct.

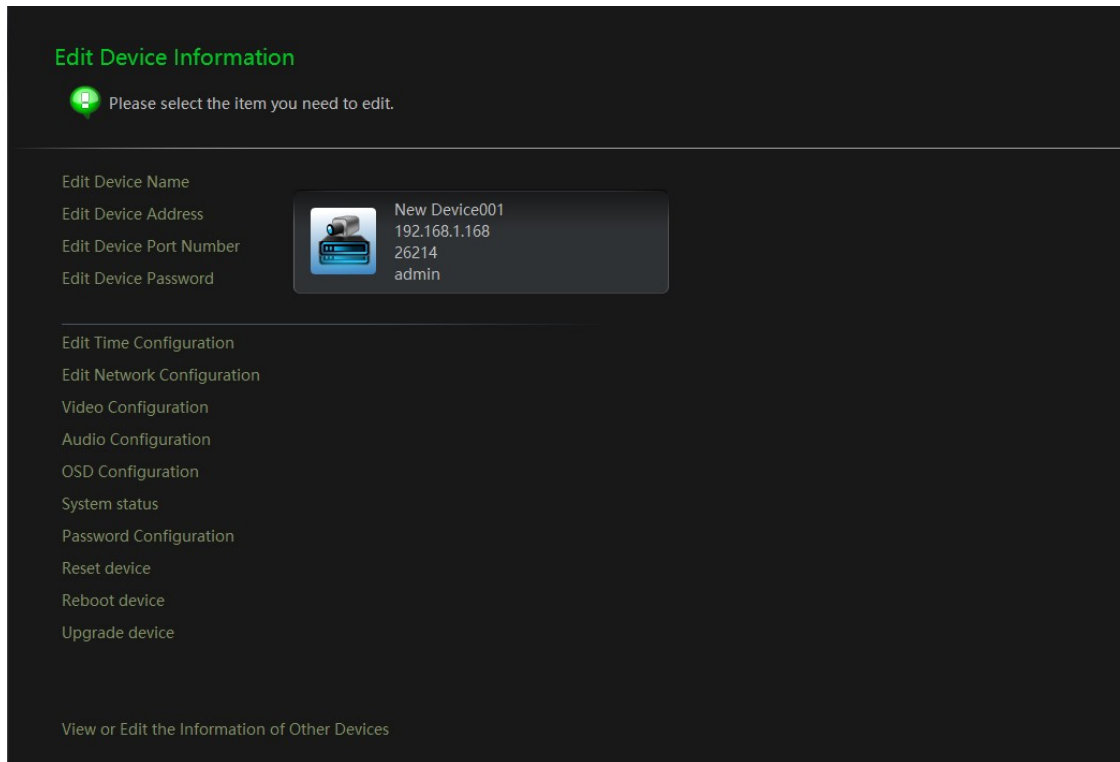




When the device is restarted or reassigned to a new IP address, the original IP address will be temporarily invalid (reassigned to a new IP address requires the device to be added), and the platform will indicate that the device is not online with a dialog box and online status, gray means not online, and green means online

3.2 Edit:





In Edit page, device parameters can be configured.

3.2.1 After each device was set, click “View or Edit the Information of Other Devices” to return, and select other devices for parameter setting.

3.2.2 Edit device Name, Edit Device Address, Edit Device Port Number, Edit Device Password (the default user name/password of all devices is admin), change the password of the login device, and it will take effect immediately after it is confirmed. The above change function is only used for the platform when the device is manually added, the parameter error can be quickly modified here, and the parameter of the device itself cannot be changed.

3.2.3 Edit Time Configuration

Default check the NTP server synchronization. You can check the NTP server synchronization to select time zone or un-check the NTP server synchronization for manual calibration.



3.2.4 Edit Network Configuration

1. UDP port, RTSP port, Auto get IP address, IP address, Sub-net mask, Gateway and Domain name server can be implemented in the network configuration. Once the network configuration is modified, need manually restart of the device to take effect.

2. Provide two video streaming protocols: RTSP primary and secondary bit streams and RTMP live streaming protocols

3. RTSP anonymous access: check means that there is no need to enter account and password when receiving video stream; otherwise, you need to enter account and password when you do not check

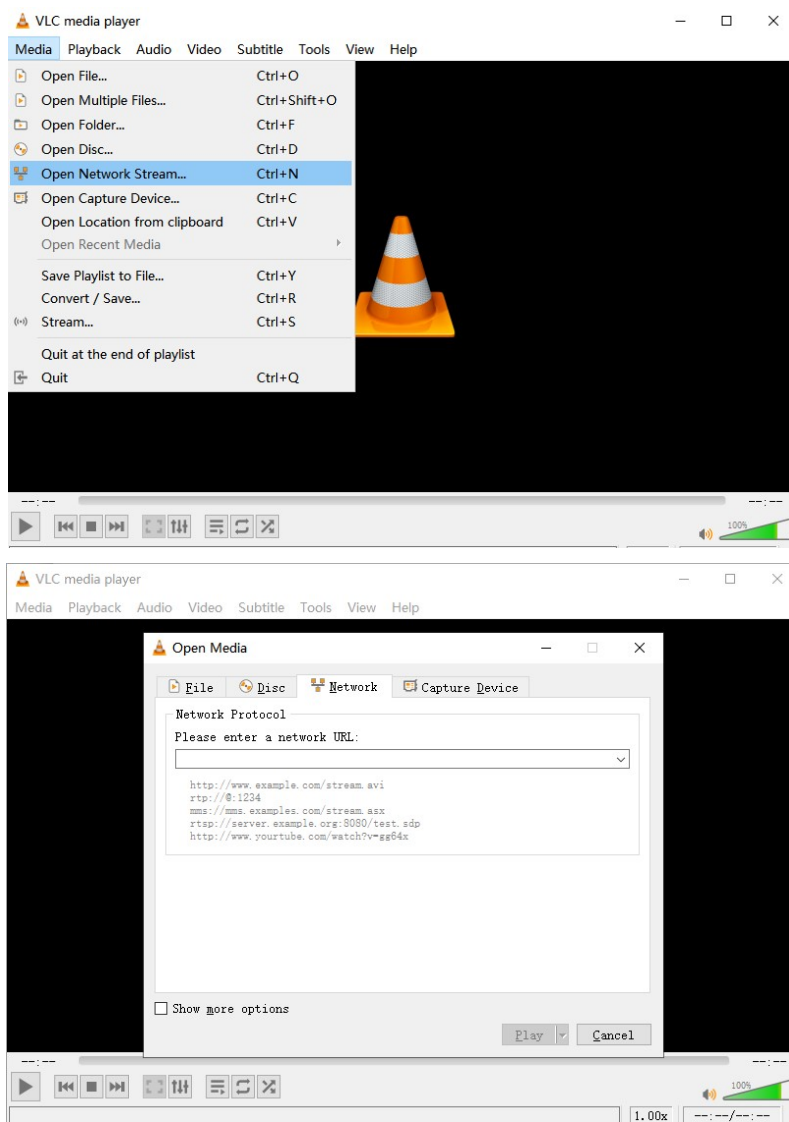
4. Default account and password: admin

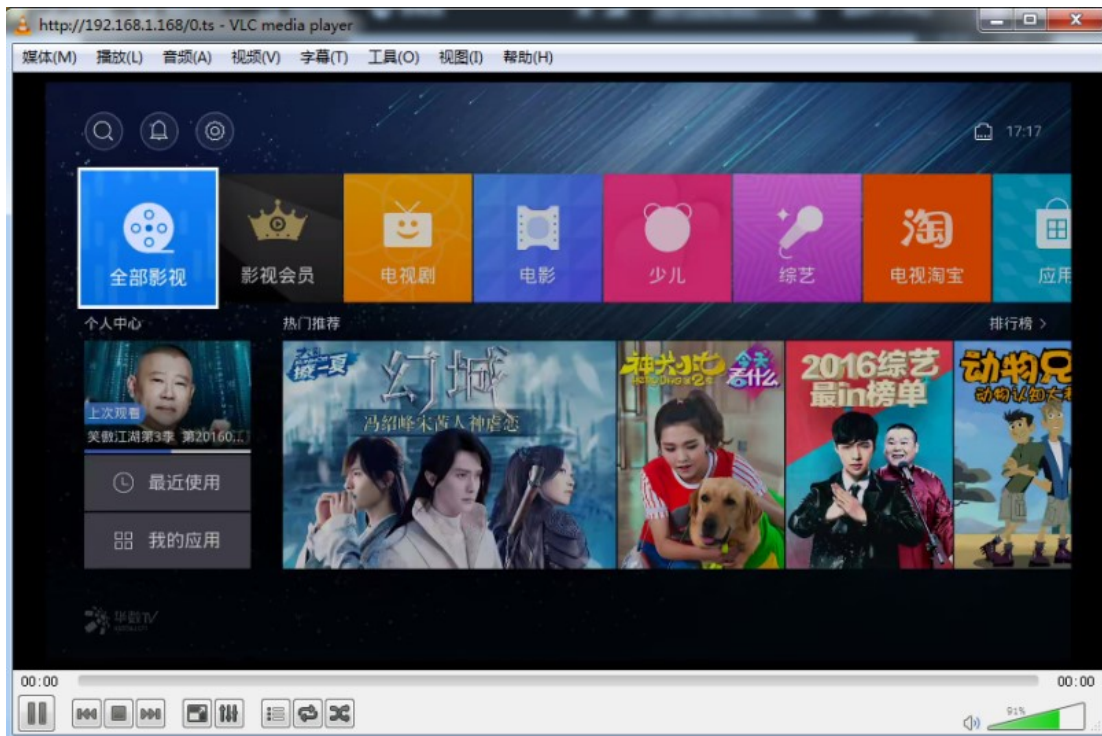
Note: the modified IP address cannot be the same as the IP address of all connected devices in the network

5. RTSP usage instructions:

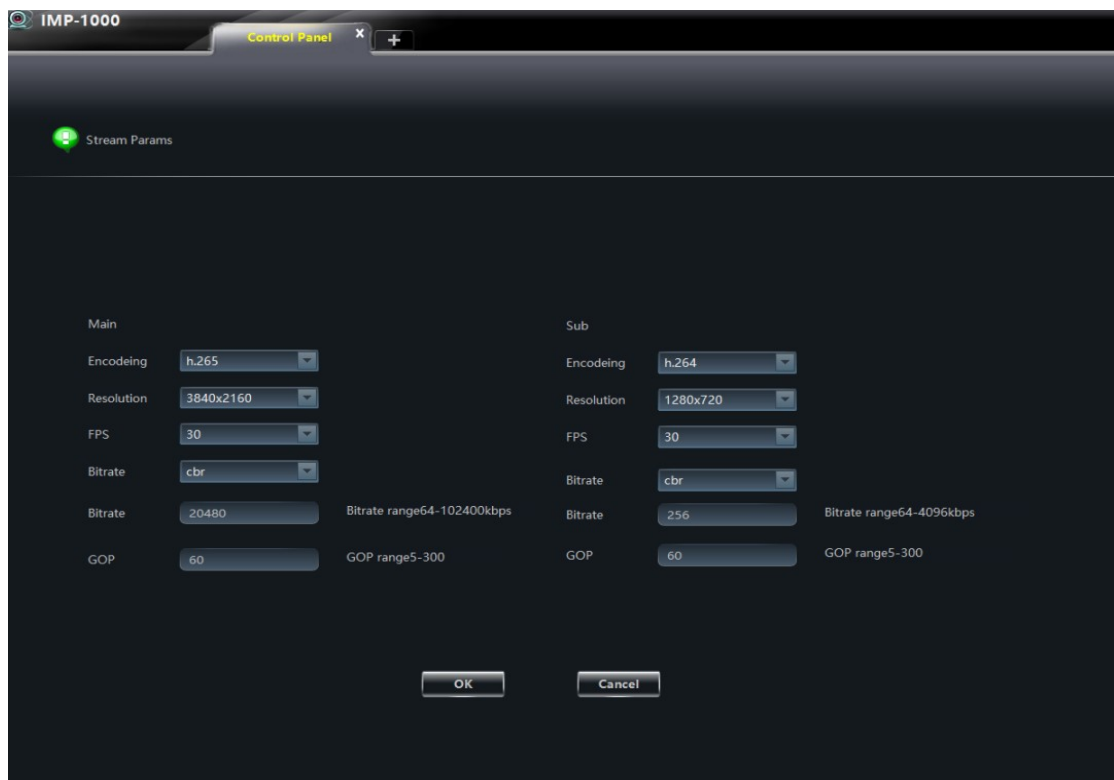
Pre-install and open the VLC player (download address: <http://www.videolan.org/>) in the computer, then select media → open the network streaming as shown in the figure below, enter the device RTSP code stream address, click play as shown in the figure below, you can successfully play the video stream encoded by the device. The device stream address is composed of IP address and RTSP port number.

Specific steps are as follows:





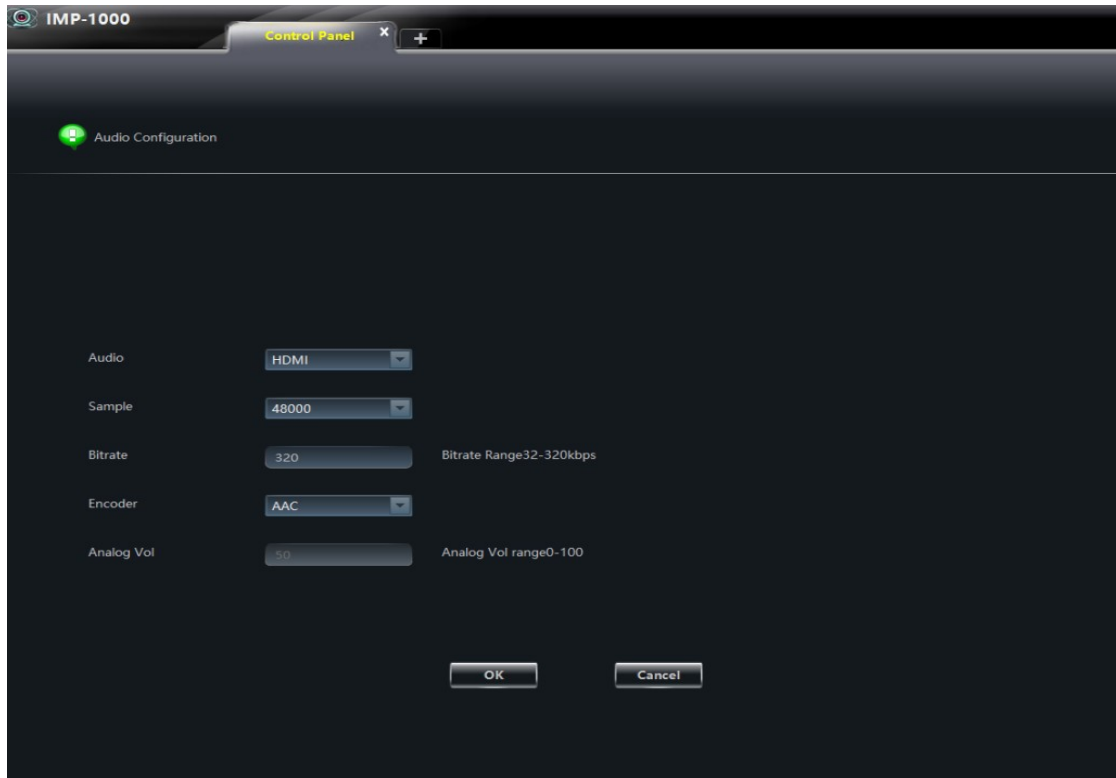
3.2.5 Video Configuration



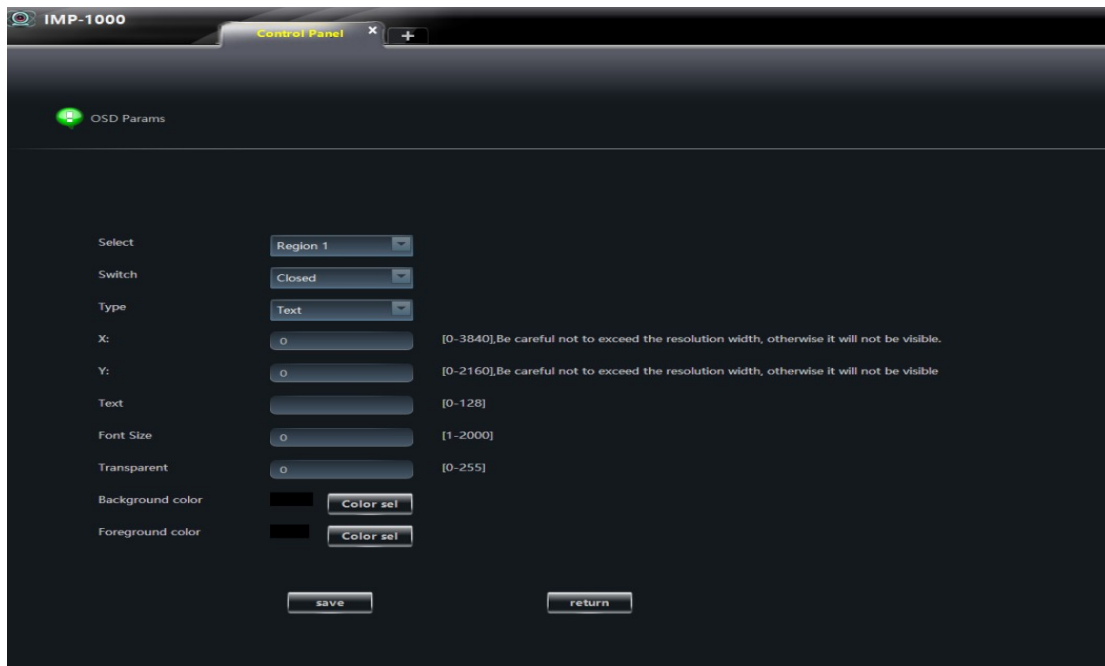
In video configuration, the parameters of the main and sub streams can be set as shown in the figure. Once the parameter modification is confirmed, it can take effect immediately

Note: these Settings are valid only if the encoding type is set to h.264.

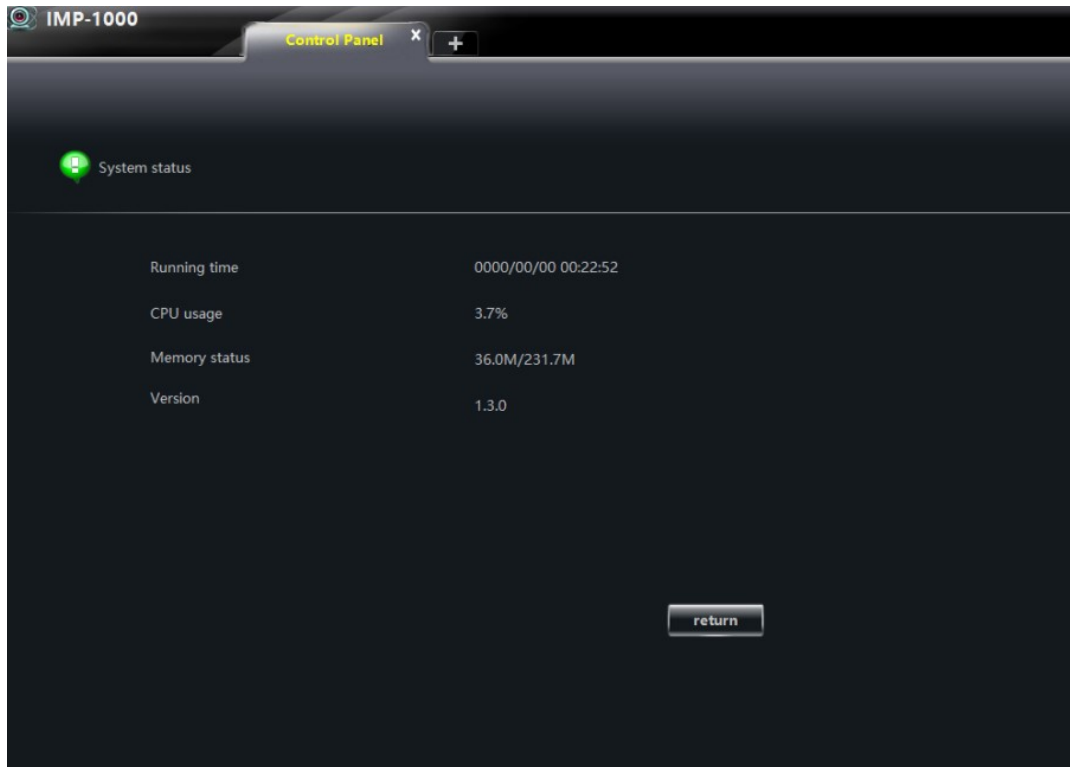
3.2.6 Audio Configuration



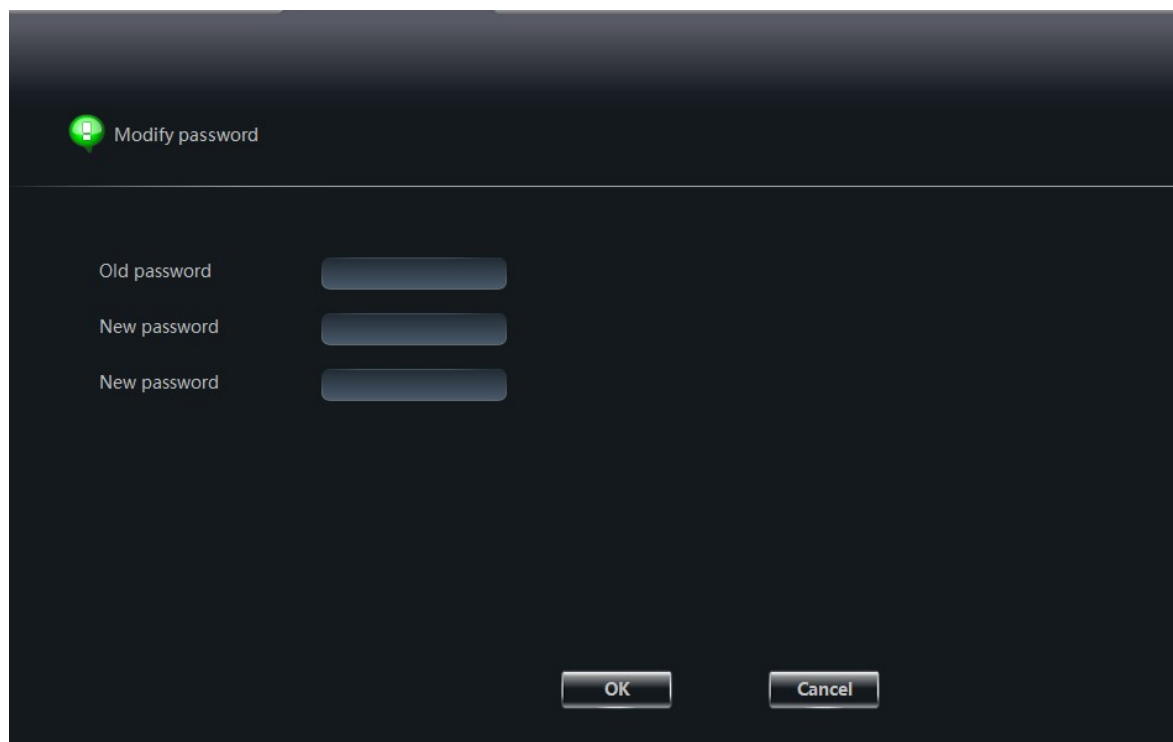
3.2.7 OSD Configuration



3.2.8 System Status



3.2.9 Password Configuration

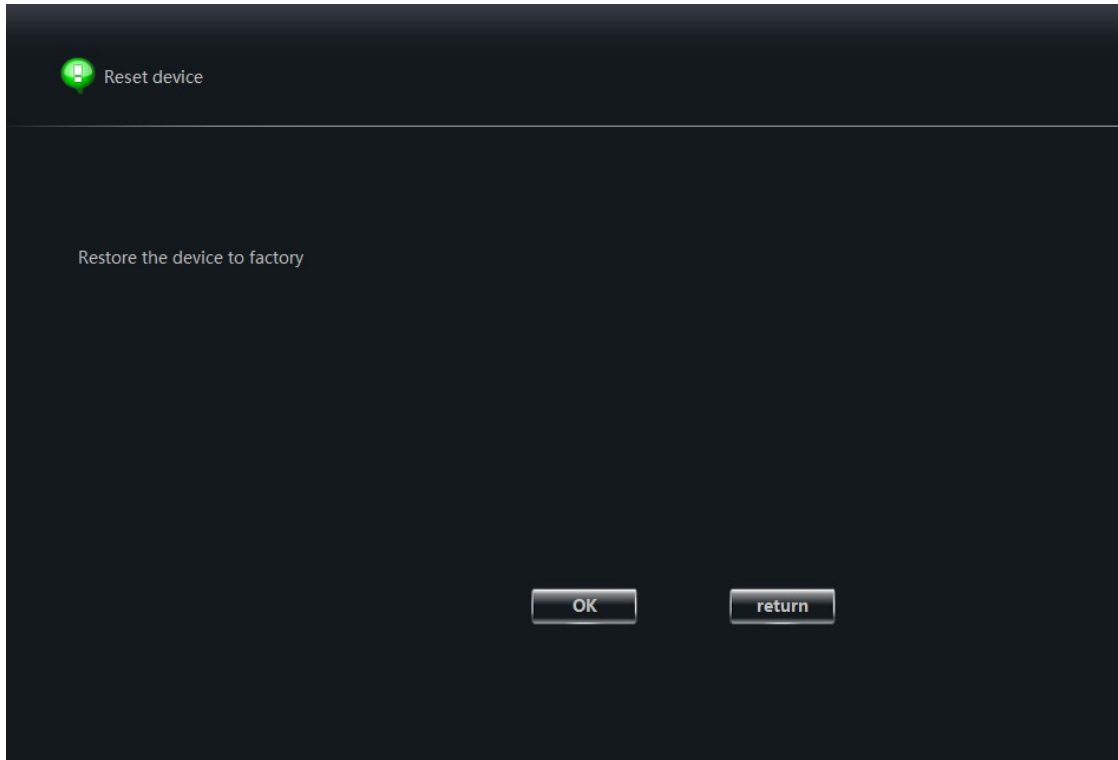


1. The default password for communication between platform and device is admin
2. After the device password is changed, the connection between the platform and the device will go offline
3. Return to the device function panel, select the login device password input, enter the newly modified password to enter confirmation
4. After the device and platform verify the password successfully, it will automatically restore to the online state

3.3.0 Reset Device

Once the reset device is determined, the device will restore factory Settings and all parameters will be restored to the initial state.

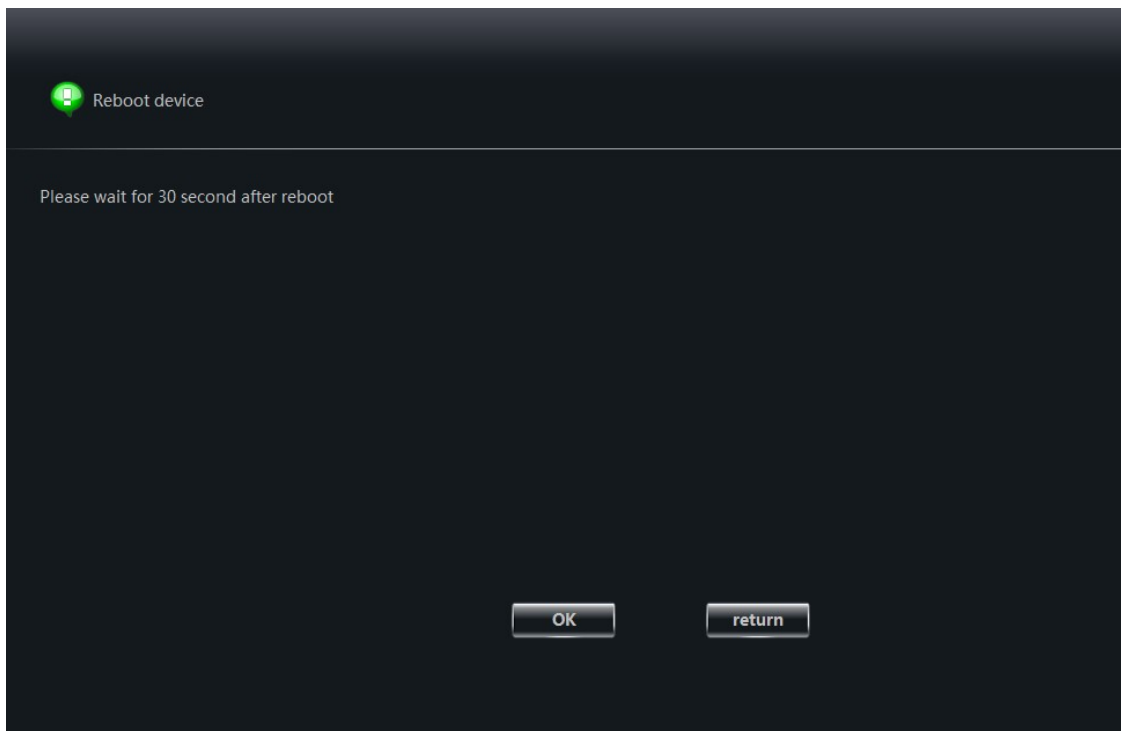
Note: if factory Settings are restored, the router will reassign the IP address of the product. If the original address fails, the device should be added again



3.3.1 Reboot Device

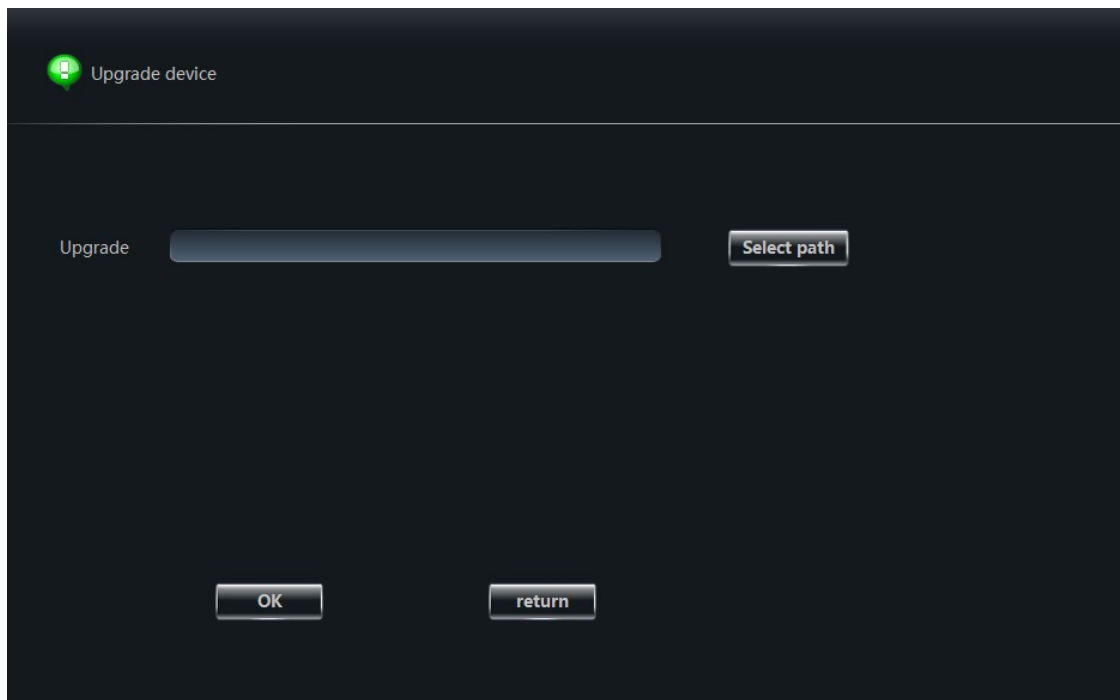
The parameters previously set will be saved on restart. The device can also be restarted through the restart button on the product.

The platform will be offline for a short time with the device, and the online state of the device will be automatically restored after the restart

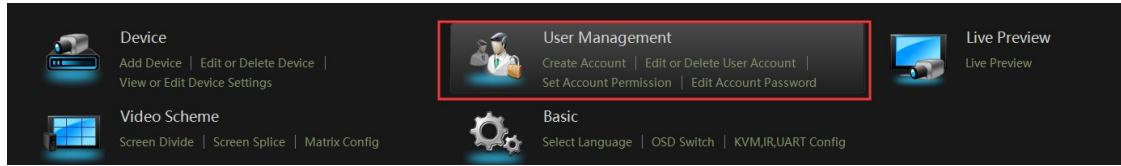


3.3.2 Upgrade Device

Select the path to find the upgrade file (bin format) and complete the software upgrade after confirmation. The platform upgrade device will not change the previous parameter configuration. Successful upgrade will be prompted and restart.



6.4. User Management Instruction:



Access to user accounts and permissions through the function panel, you can create accounts, edit or delete user accounts, set account permissions, edit account password

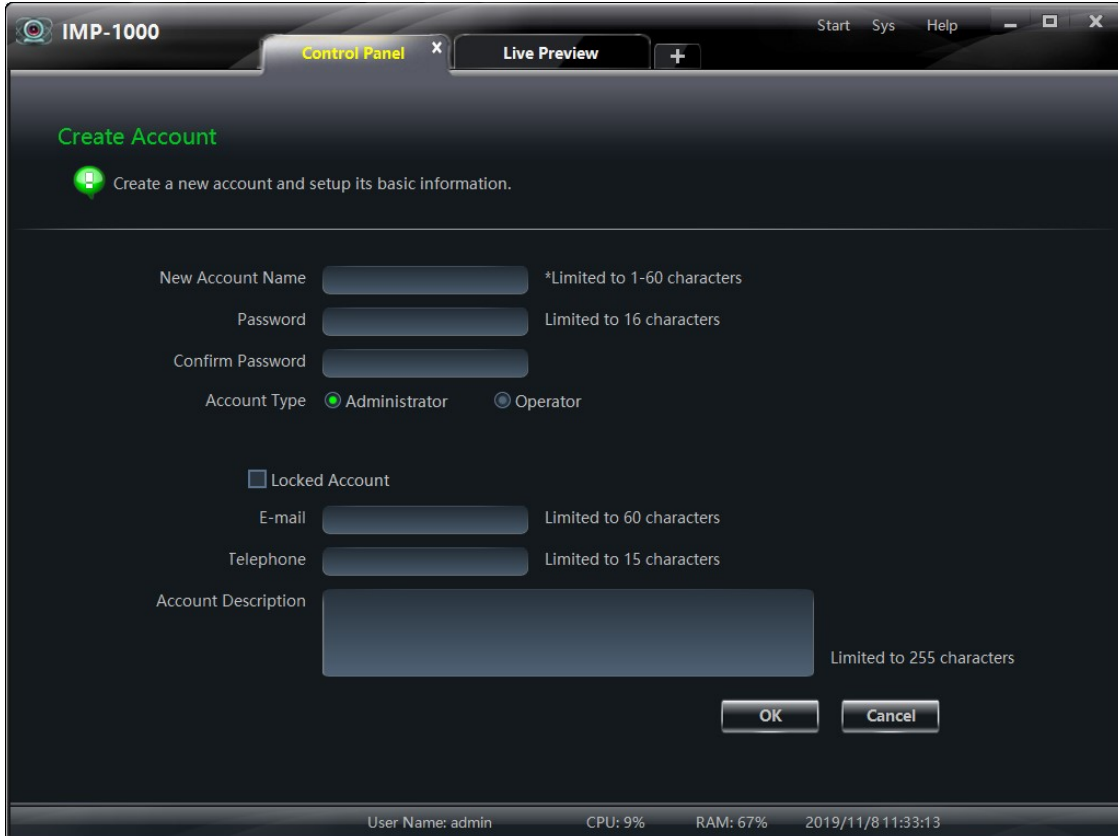
6.4.1. Create Account:

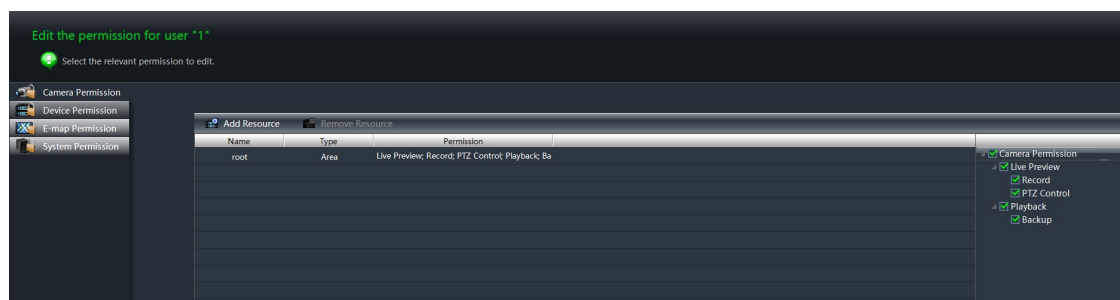
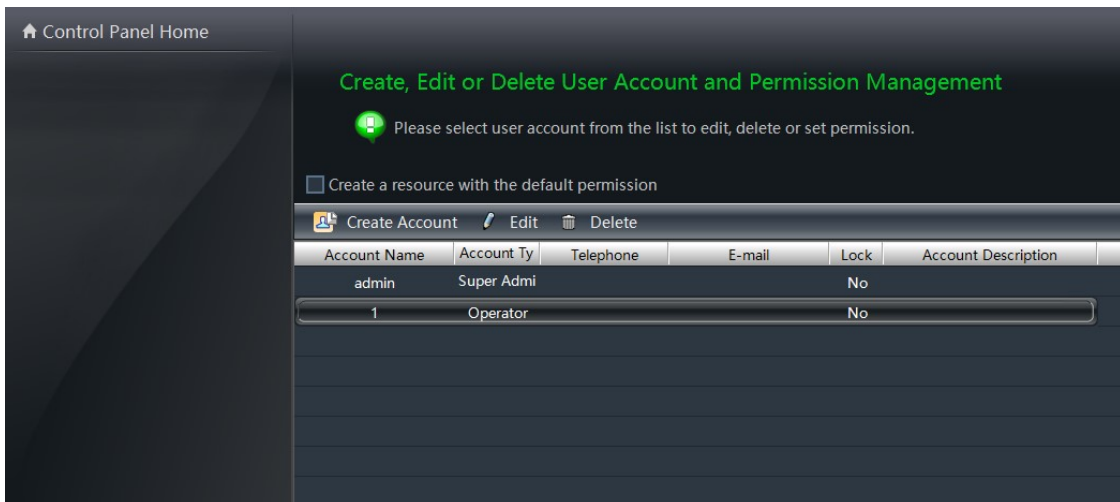
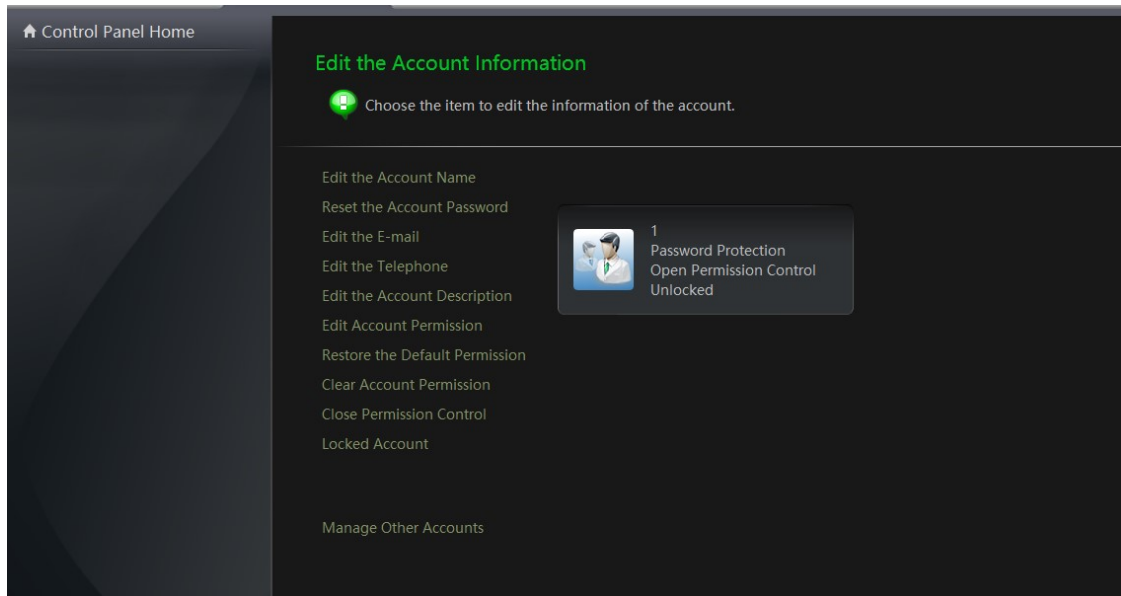
Super administrators can create other administrators or operators and set permissions as needed. To login to the created account, you must either logout of the current user or switch the user to the login screen in the upper right corner of the screen.

Specific operation steps:

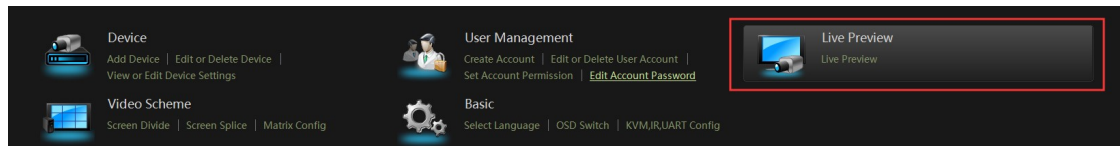
1. Open the platform and enter the main function interface
2. Select “Create Account”, fill in new account name and password, set account type (administrator, operator) and click confirm
3. Return to the main function interface and click "user account and permission"
4. Check the list of accounts created after entering
5. If the account is wrong, can click on a group of accounts to select and delete them.

Note: the first created account is super administrator by default.





6.5. Live Preview Instruction:



The Live Preview can monitor the input signal source image in real time, so that it can be used as a monitoring function.

Live Preview area: can accommodate 1-100 groups of signal source devices access and view at the same time (with one key to close all and full screen)

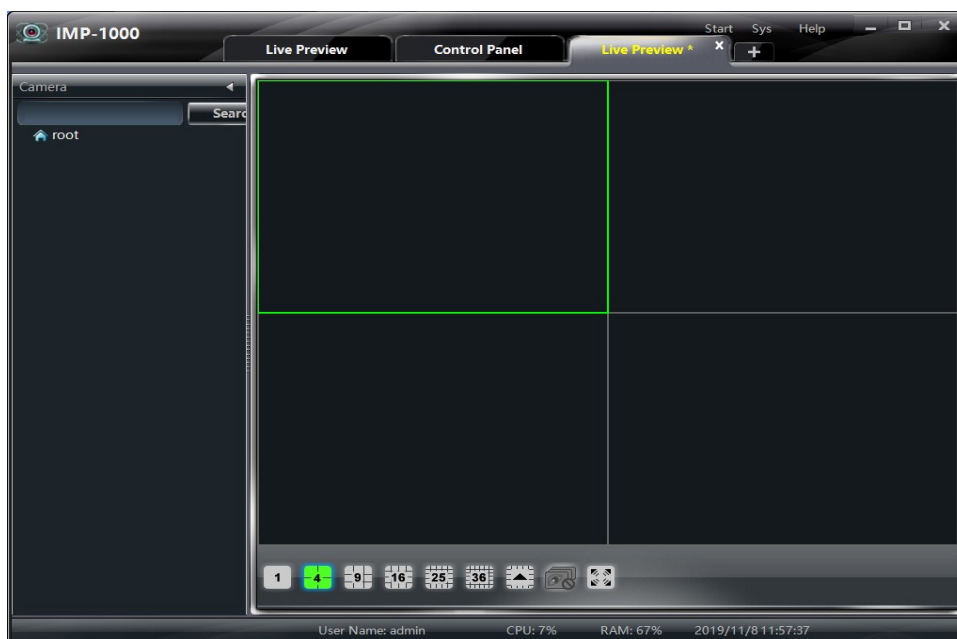
Each group of devices can select the following functions by right mouse button:

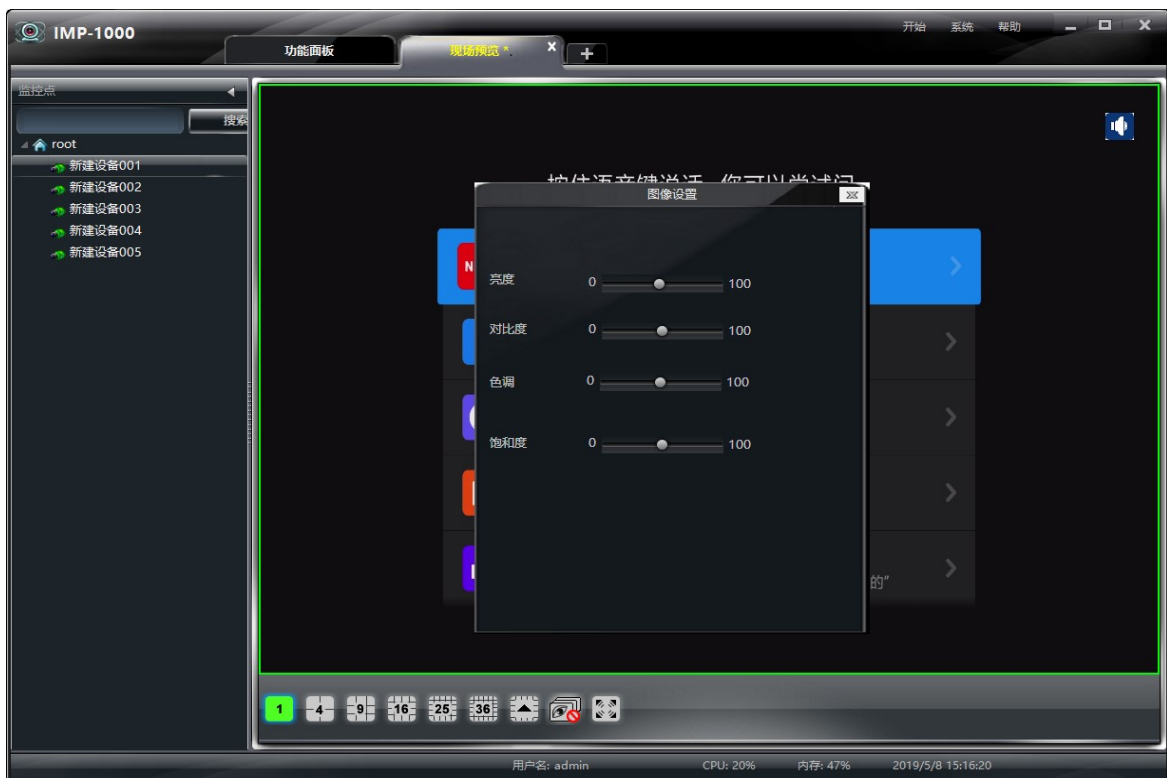
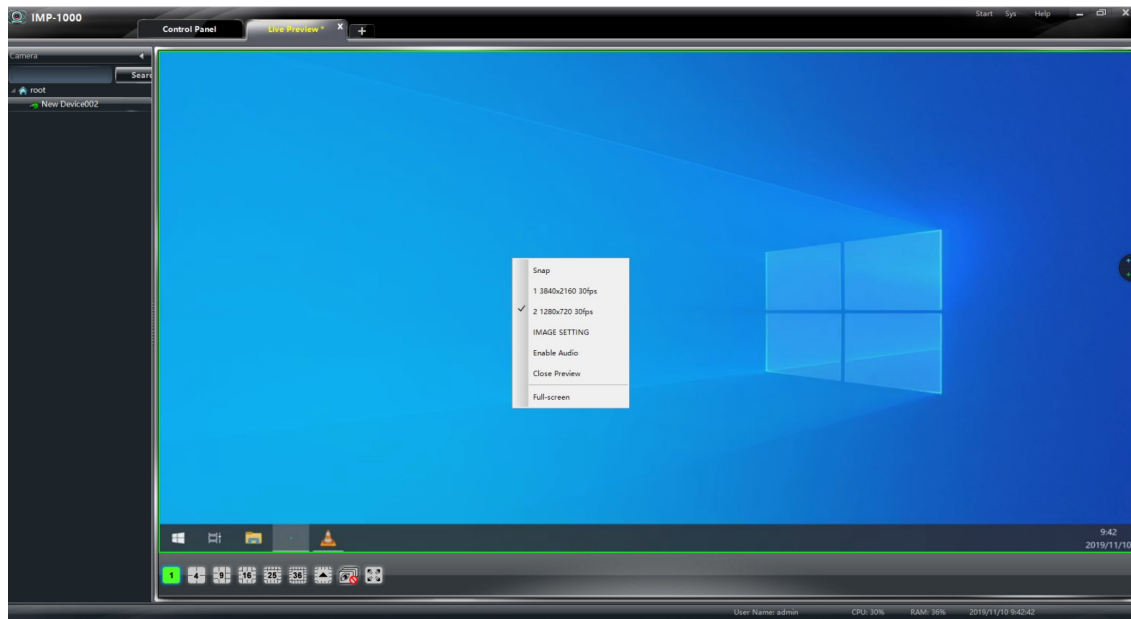
1. Capture (capture five identical images in a row)
2. Switch between primary and secondary streams
3. Image setting (brightness, contrast, hue, saturation)
4. Turn on sound and turn off sound
5. Close preview
6. Full screen

Specific steps are as follows:

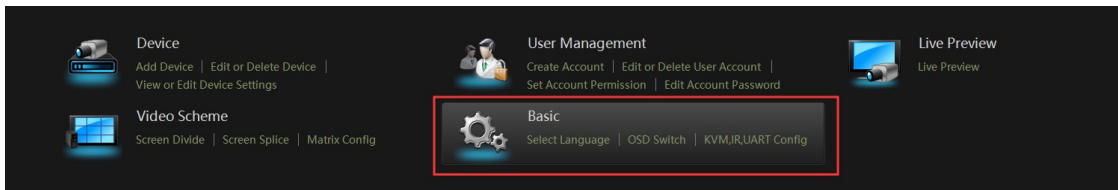
1. Open Live preview in the function panel
2. A list of TX device names will be displayed on the left
3. Long press the left button to select a group of devices and drag the current device name into the segmentation box
4. Complete live preview

Noted: right mouse button to select the resolution of the main stream will automatically enter the full screen state. Switch to other segmentation image to recover sub stream automatically.



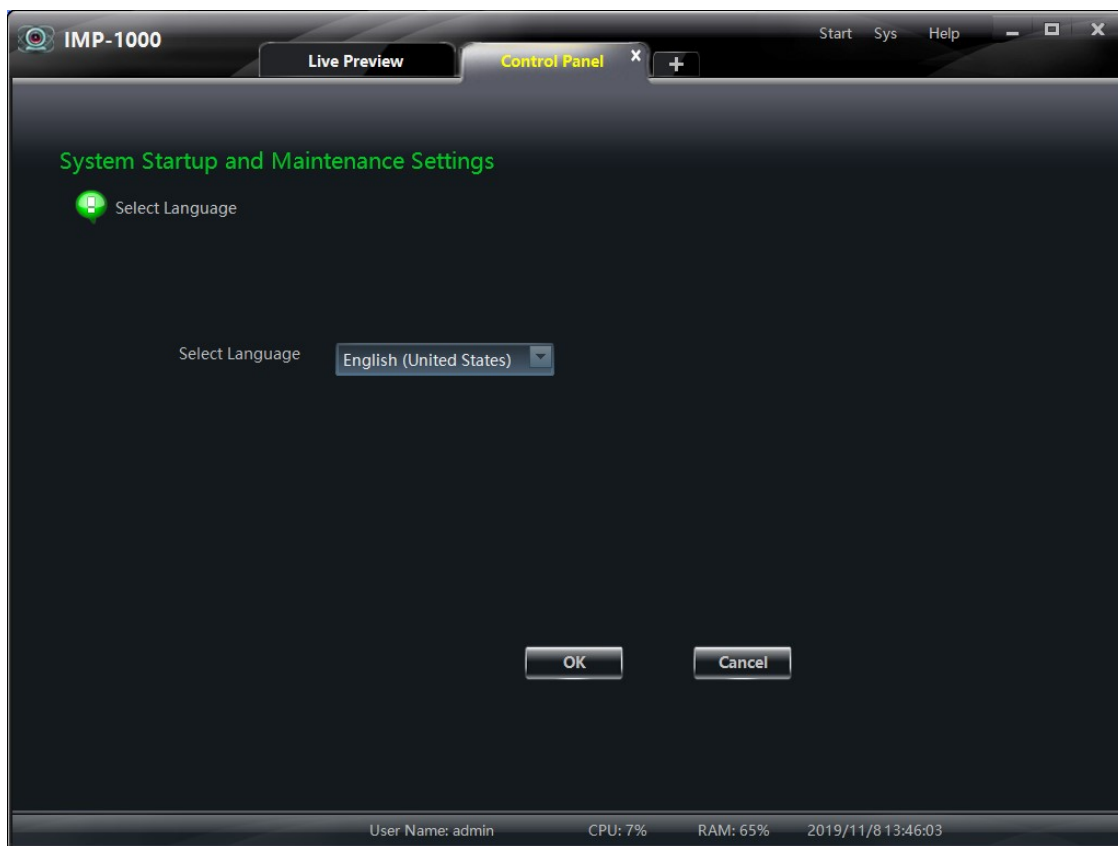


6.6. Basic Instruction:



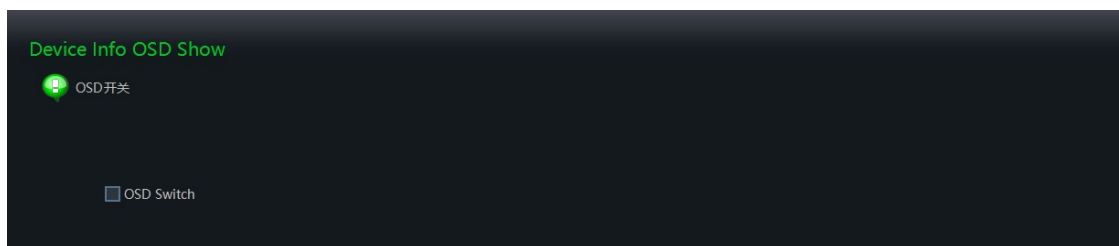
6.6.1. Select Language:

The platform supports switching between Chinese and English. If the switching is completed, the platform needs to be restarted.

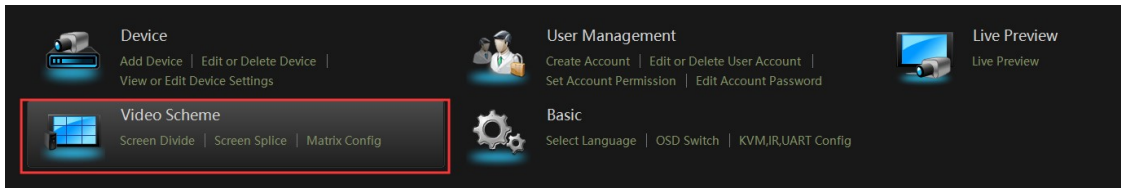


6.6.2. OSD Switch:

For large screen segmentation, large screen splicing, matrix configuration to find RX IP address and other information, in order to quickly operate the configuration.



6.7. Video Scheme Instruction:



6.7.1. Matrix Configuration

Before use RX with the platform. Set up the matrix configuration on the platform. Many-to-many or one-to-many can be preset as video matrix.

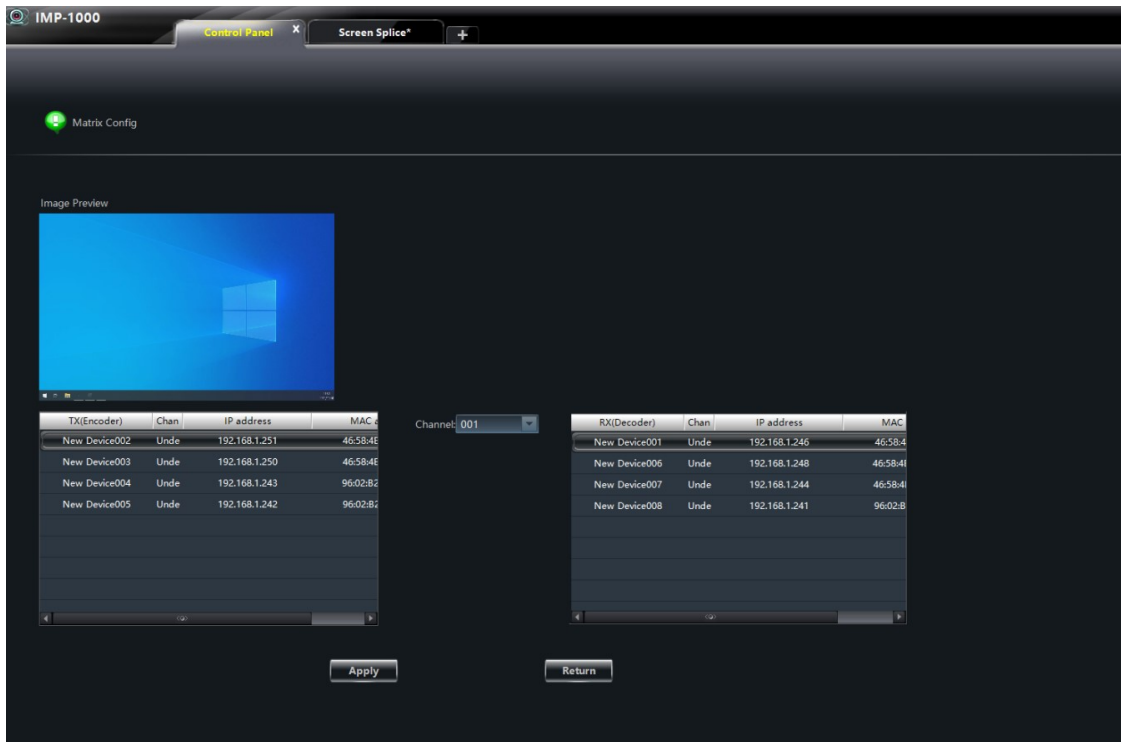
Factory default OSD interface is as follows:

The current software version information, RX IP address and RX MAC address are displayed in the light blue background



Specific steps are as follows:

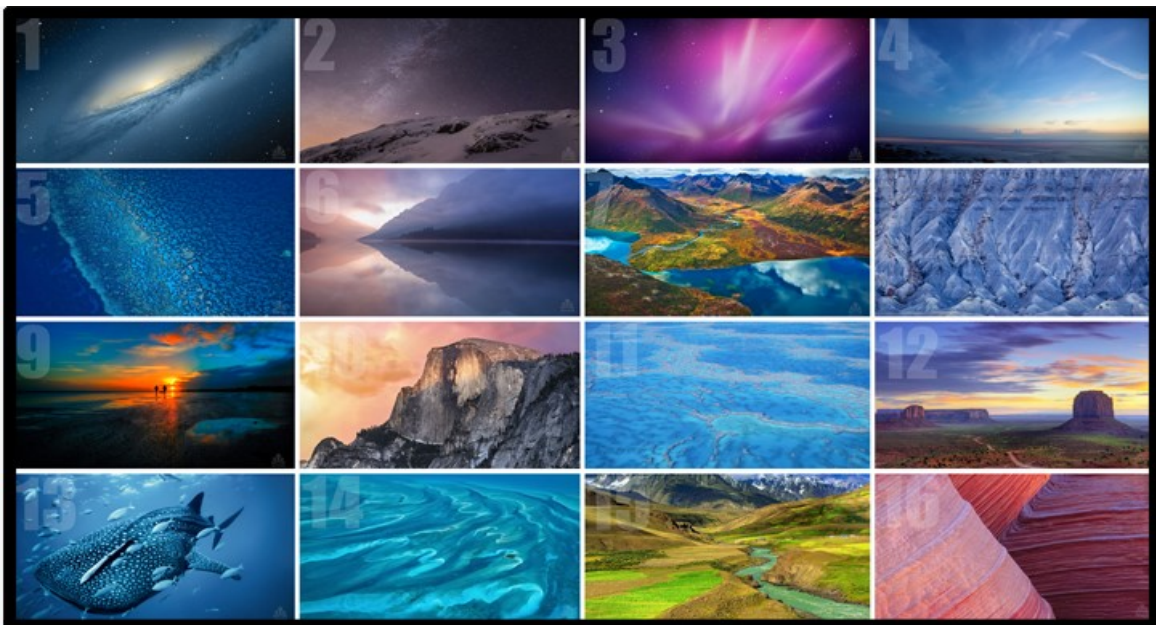
1. Open the function panel and select matrix configuration
2. The top of the left column represents the preview window, and the bottom of the left column represents the TX device list information
3. The middle represents the group channel ID, and the right column represents the RX device list information
4. Click any device in the TX list once with the left mouse button, and the upper window will take the real-time preview image as the current signal source
5. Customize the channel ID of TX device (click the blank in the list to unselect it with the left mouse button)
6. The RX list corresponds to the TX device channel set to be consistent
7. Completion of matrix configuration



6.7.2. Screen Divide:

Large screen divide means that multiple groups of signal sources are displayed in one screen. See the example image below:

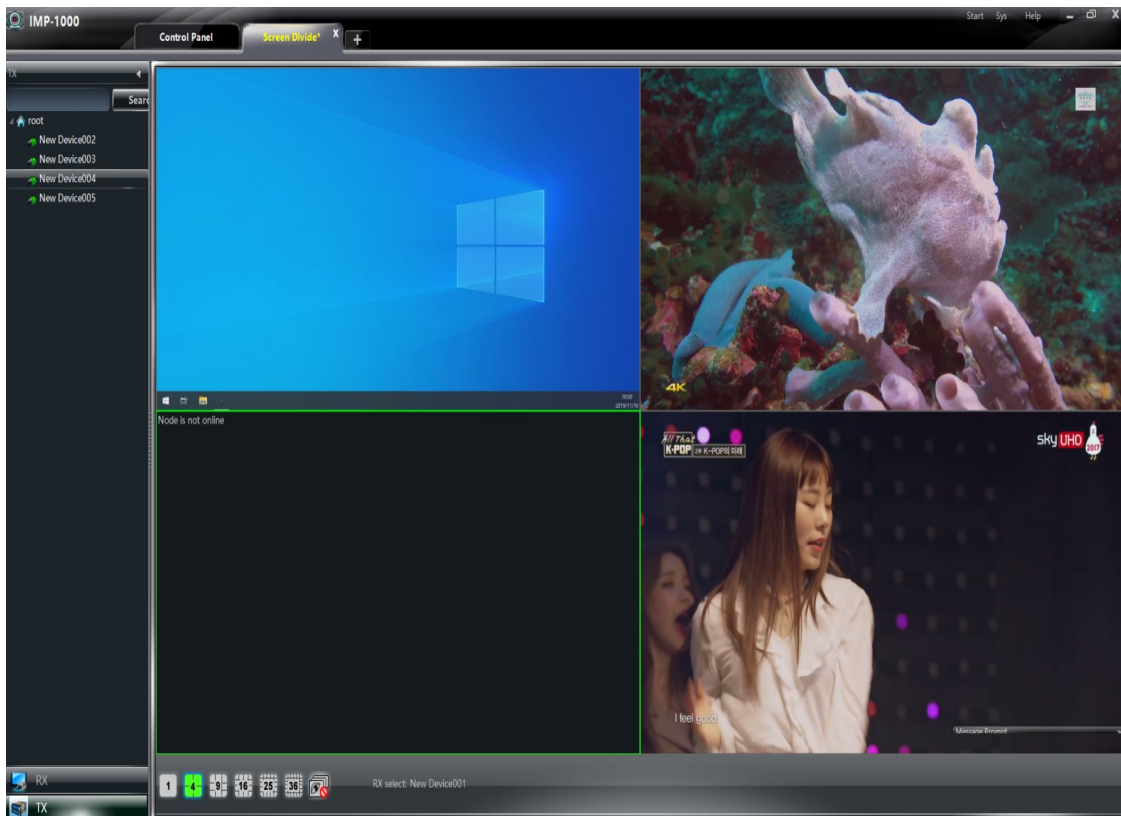
- 1). Each group of video sources is presented as a sub stream within the large screen divide.
- 2). Up to 36 groups of signal source segmentation can be supported



Specific steps are as follows:

- 1) open the CMP integrated management platform and enter the main interface of the functional panel;
- 2) select the "OSD switch" option, check the OSD switch and return to the main interface of the functional panel;
- 3) select the "Screen Divide" option to enter the large-screen divide interface;
- 4) set the required number of divide boxes (1, 4, 16, 25, 36);
- 5) select the RX device to be divided according to the IP address displayed by OSD;
- 6) open the RX device list in the monitoring point area (left side), select the required RX device, and long press the left mouse button to drag it into the divide box;
- 7) open the TX device list in the monitoring point area, select the required TX device, and long press the left mouse button to drag it into the divide box;
- 8) large screen divide operation is completed.

Note: if the RX returns to normal one-to-many or many-to-many, it can be restored by re-entering the matrix configuration. Exit will prompt you to save the view.

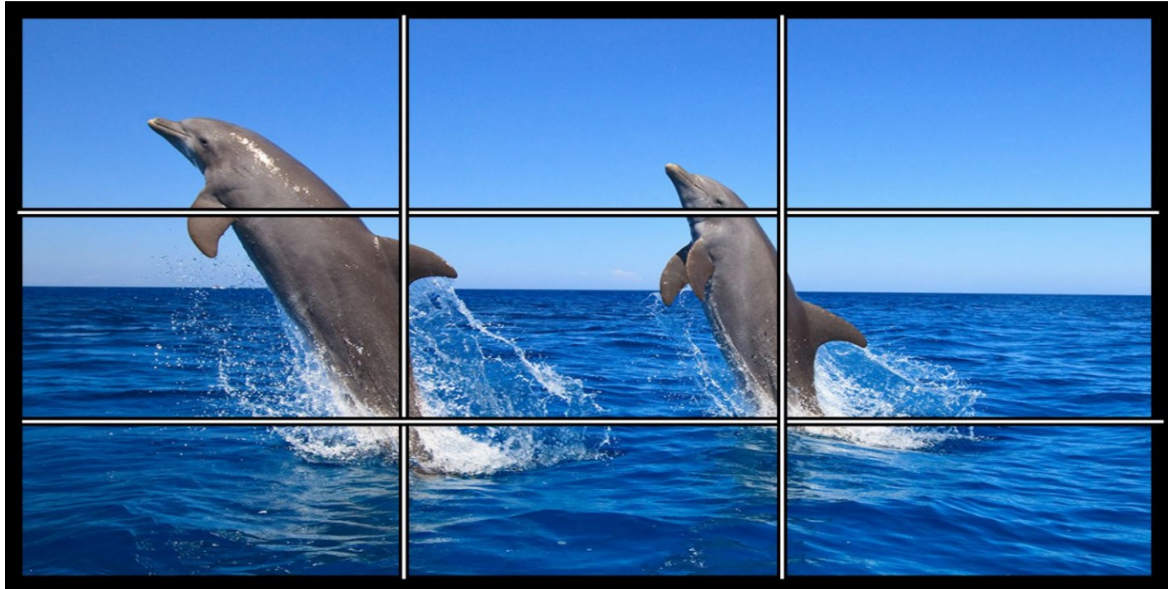


6.7.3. Screen Splice:

A large screen splice consists of a single signal source splicing multiple sets of RX (TV) into a single image. See the example image below

- 1) . Under large screen splicing, the maximum resolution of each group of RX devices supports 4K30.

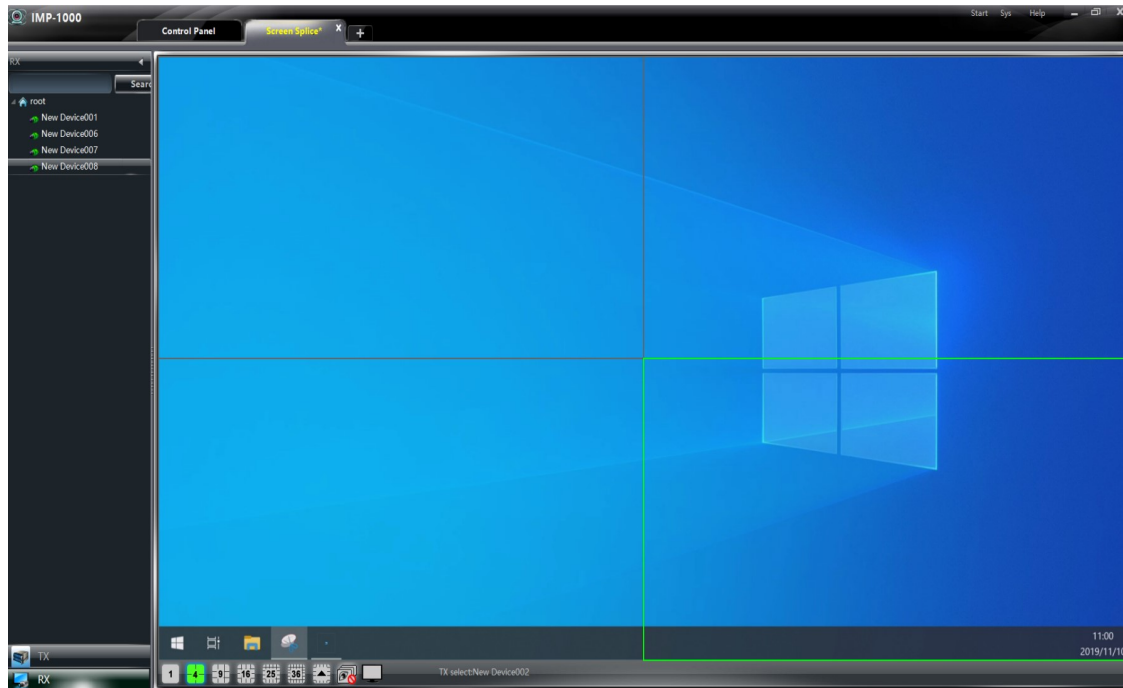
- 2). The current maximum support is 9×9 splicing
- 3). Edge shielding (screen width, screen height, display width and display height) can be set separately for each group of spliced images.



Specific steps are as follows:

- 1) Open the CMP integrated management platform and enter the main interface of the functional panel;
- 2) Select the "OSD switch" option, check the OSD switch and return to the main interface of the functional panel;
- 3) Select the "Screen Splice" option to enter the big-screen splicing interface;
- 4) Select the required number of splicing boxes (1, 4, 16, 25, 36);
- 5) Select the RX device signal source required to be spliced first according to the IP address displayed by OSD;
- 6) Open the TX device list in the monitoring point area, select the required TX device, and long press the left mouse button to drag it into the splicing box;
- 7) Open the RX device list in the monitoring point area, select the required RX device, and long press the left mouse button to drag it into the splicing box;
- 8) Large screen splicing operation is completed.

Note: if RX returns to normal one-to-many or many-to-many, that is, reentry into matrix configuration can be restored, exit will prompt whether to save the view.



6.7.4. KVM/IR/RS232 configuration:

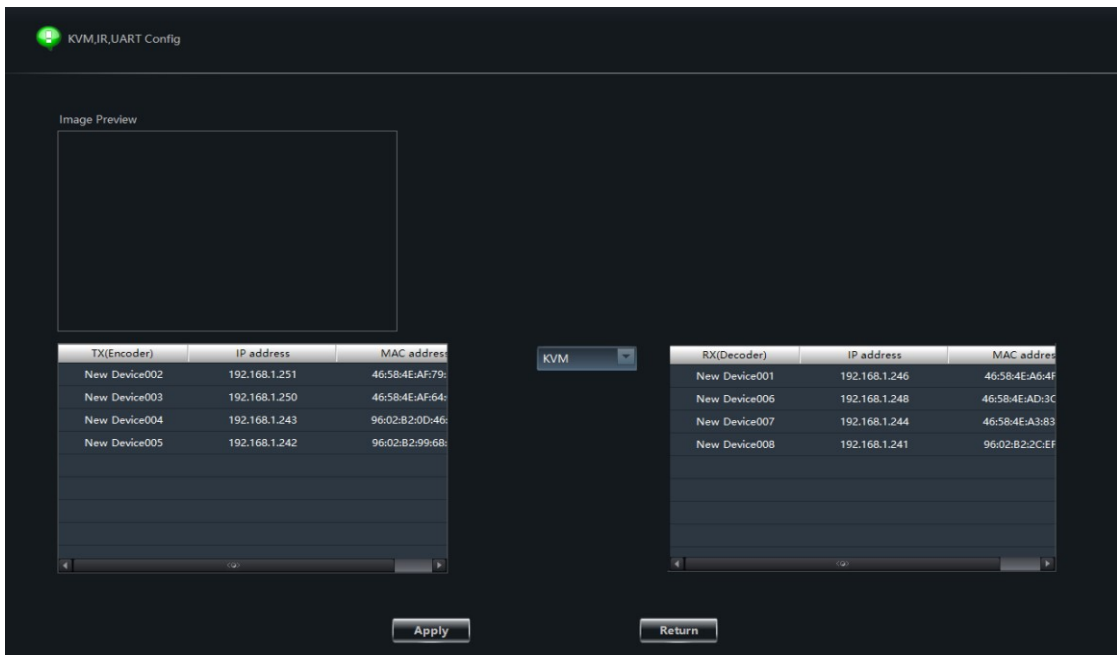
KVM:

Devices can be pre-configured one to one, one to many, or many to many when paired with KVM capabilities.

Specific operating instructions:

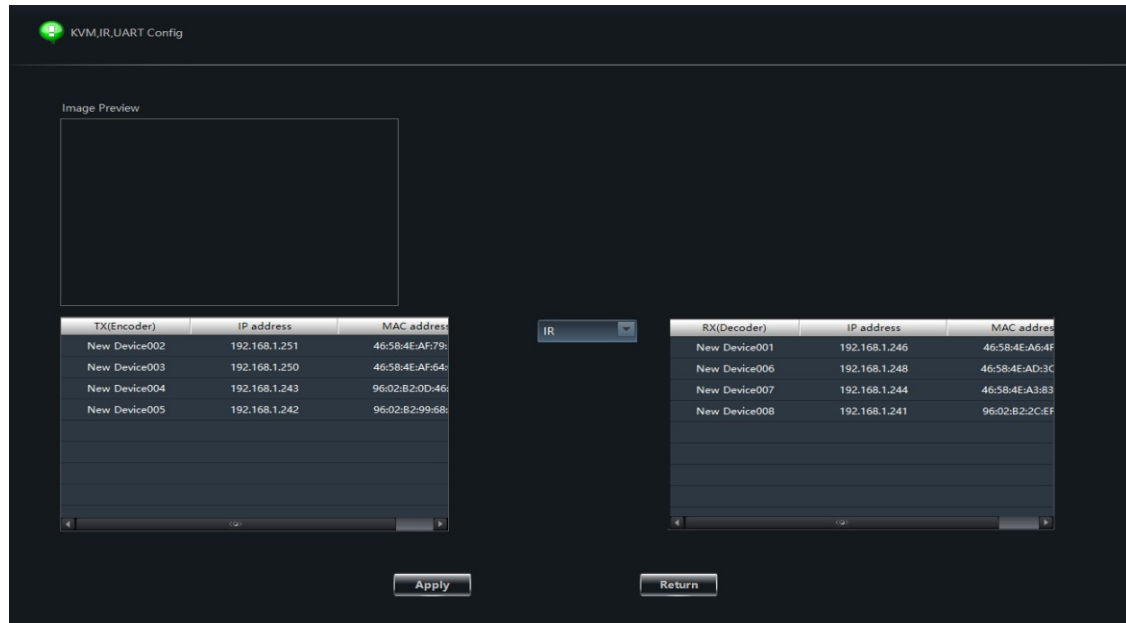
- 1) open the CMP integrated management platform and enter the main functional interface;
- 2) select the option of "KVM, infrared and serial port configuration" to enter the interface of KVM, infrared and serial port configuration;
- 3) in the configuration interface of KVM, infrared and serial ports, there are image preview window, TX device list window, RX device list window and function selection window

As shown below:

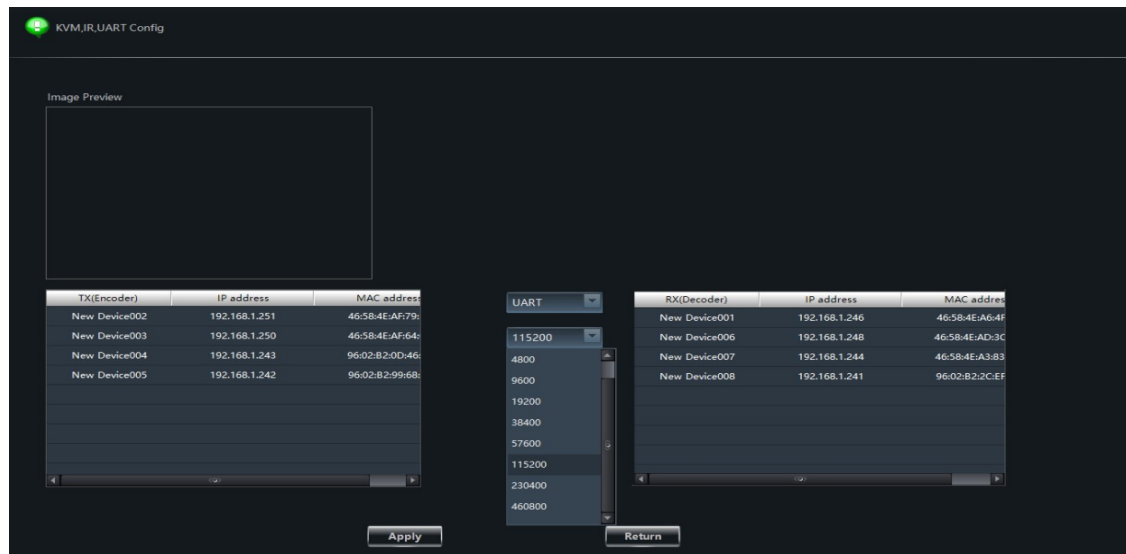


- 1) select "KVM" in the function selection window
- 2) select the TX device to be configured in the TX list window;
- 3) in the RX list window, select the RX device to be configured (click the left mouse button to select the device, hold down the Ctrl key, then select the device with the left mouse button for multiple selection, and click the right mouse button to cancel the current selection in the blank in the window), and then click apply.
- 4) after the selected TX device and RX device are configured, the rx-connected keyboard and mouse will normally control the tx-connected computer.

IR:



RS232:

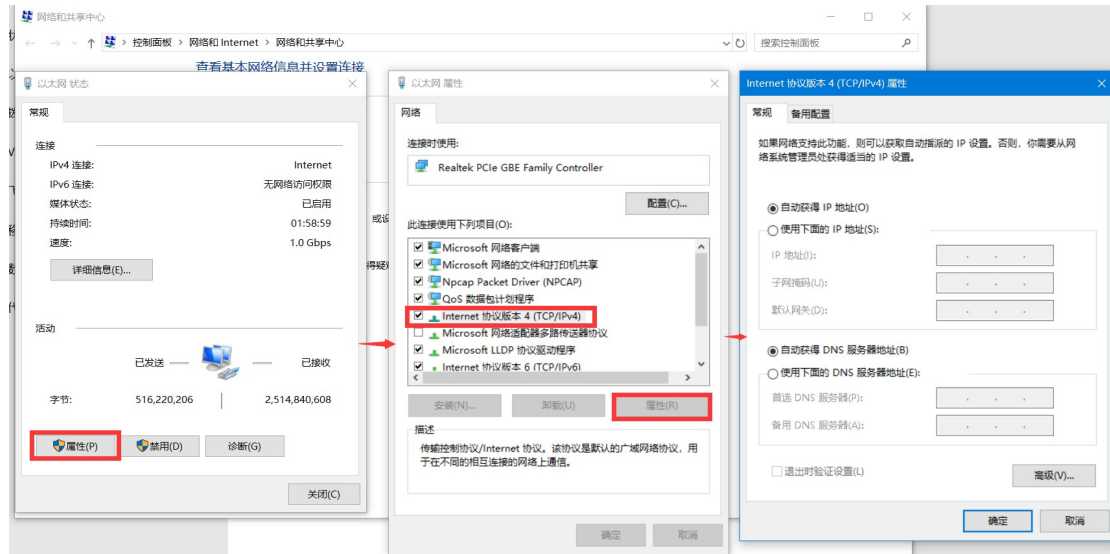


7. WEB Instruction:

7.1. Change the IP address of your PC

Before configuring the device through the web side, it is necessary to configure the IP address of the computer configured with the device (mainly to ensure that the computer and the device are set in the same network segment).

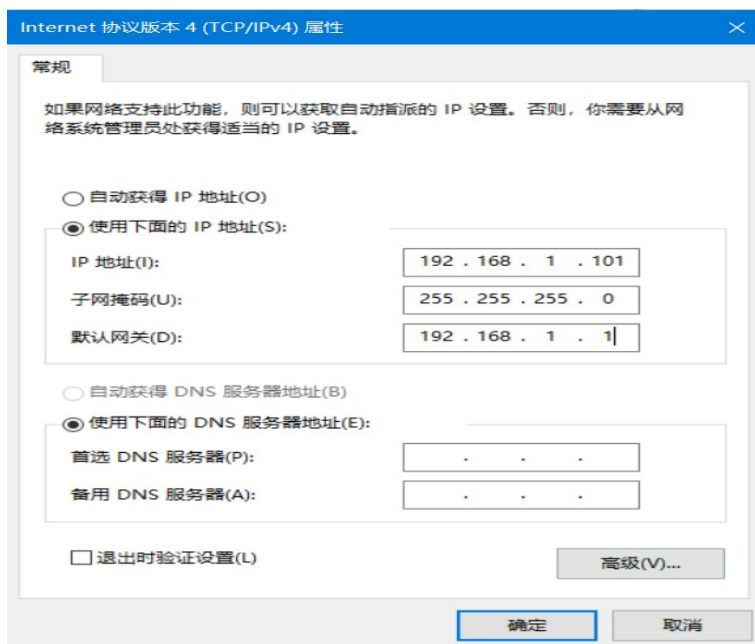
1. Open the network control center and set the computer's IP address:



2. Choose to use Static IP, with the IP address set to 196.168.1.x (x ranges from 0 to 254, but cannot be consistent with the device's IP address),

3. Subnet mask set to 255.255.255.0

4. Gateway set to 192.168.1.1



5. Enter the device's IP address in the web browser for the device configuration interface

Note: TX Static default IP: 192.168.1.10, RX default IP: 192.168.1.15 (device and computer directly connected by network cable).

Device DHCP default open, if there is a router will directly assign IP address.

7.2. System Setting:

1) System Status

In the "System", you can view the system status and device version

Note: the current system state does not support real-time refresh. If you want to get another refresh after entering the system, you need to reload the page.

And select the language of the interface, change the channel of the device, upgrade the device, restart the device, and restore the factory Settings.

2) Language Switching

- In the "System" interface, the language of the interface can be switched
- Select the language we need, after the selection is completed, we can switch the interface language (support Chinese and English)

3) Channel

- The channel of the device can be configured in advance in the "System" before configuring to use the RX device;
- If the TX and RX devices are configured on the same channel, the display connected to the RX device can play the audio and video signals from the TX device
- Through channel configuration, Can set one-to-many, many-to-many video matrix (Note: channels between TX devices and TX devices cannot be set to be consistent, otherwise channel conflict will be caused).

4) Upgrade Equipment

In the "system configuration" interface, you can upgrade the device

- Find the file (bin format) to upgrade by selecting the path, and complete the software upgrade after confirmation.
- The platform upgrade device will not change the previous parameter configuration.

Reset Device

- After confirming to Reset Device Settings, the device will restore factory Settings and all parameters will be restored to the original state;
- Reset Device Settings, and the product will be re-assigned the IP address by the router. If the original address is invalid, the device IP address should be re-entered in the web browser address bar.

6) Reboot Device

- The parameters set before reboot will be saved when reboot;
- After Reboot Device, the platform and the device will be temporarily offline, and the online state of the device will be restored automatically after the restart

The screenshot shows the 'System' configuration page of a device. At the top, there are tabs for 'System', 'Network', 'Audio', 'Video', 'OSD', and 'Time'. The 'System' tab is selected. Below the tabs, there are several sections:

- System state:** A table-like view showing system information: Product model (Encoder(TX)), Running time (01:19:45), CPU usage (12.87%), Memory status (38.58M/231.73M), and Version (1.4.1).
- Language Switch:** A dropdown menu currently set to 'English'.
- Channel switching:** A dropdown menu set to '000' and a button labeled 'application'.
- Upgrade:** A section with a 'Select file' button, the text 'Please upload', and an 'Upload' button.
- System Operation:** A section with two buttons: 'Reset device' and 'Reboot device'.
- User password:** A section with three input fields for 'Current Password', 'New Password', and 'Confirm Password', and a 'Determine' button.

Red rectangular boxes are drawn around the 'Language Switch', 'Channel switching', 'Upgrade', and 'System Operation' sections, highlighting them.

7.3. Network configuration

1) In the "Network" configuration, UDP, RTSP, Network address, Sub-net Mask, Gateway and Domain name server can be modified; After the network configuration is confirmed, the device needs to be restarted manually to take effect. (note: only when the static network address can be modified)

2) Two video streaming protocols are provided: primary and sub-code streams of RTSP; RTMP live streaming protocol.

3) RTSP anonymous access: check the box to indicate that there is no need to enter the account and password when receiving the video stream; otherwise, Need enter the account and password when not checked.

4) Default account and password: admin

5) Note: the modified IP address cannot be the same as the IP address of all connected devices in the network.

System	Network	Audio	Video	OSD	Time
UDP port	<input type="text" value="26214"/>				
RTSP port	<input type="text" value="554"/>				
Acquisition mode	<input type="radio"/> Static IP Address <input checked="" type="radio"/> DHCP				
Network Address	<input type="text" value="192.168.1.10"/>				
Subnet Mask	<input type="text" value="255.255.255.0"/>				
Gateway	<input type="text" value="192.168.1.1"/>				
Preferred DNS	<input type="text" value="114.114.114.114"/>				
Alternate DNS Server	<input type="text" value="8.8.8.8"/>				
MAC address	<input type="text" value="46:58:4E:AF:64:09"/>				
RTSP Anonymous Access	<input checked="" type="checkbox"/>				
Main Stream RTSP	<input type="text" value="rtsp://192.168.1.10:554/profile1"/>				
Sub Stream RTSP	<input type="text" value="rtsp://192.168.1.10:554/profile2"/>				
RTMP Address	<input type="text" value="rtmp://192.168.1.55:8899/live/"/>				<input type="button" value="Enable"/> ▼
	<input type="button" value="Save"/>				

Note: How to use RTSP and RTMP refer to the operating steps of the platform

7.4. Audio configuration

Digital audio (HDMI) and ANALOG audio (ANALOG) can be configured on the "Audio" interface

HDMI: audio of the source (Default)

- ANALOG: ANALOG audio embedding
- Sampling rate: 48000 (default), 41000

- Coder: ACC
- Analog audio volume: used to adjust analog audio output volume, default is 50, volume range 0-100
- ANALOG embedding: access audio equipment (such as mobile phone) through 3.5mm audio line, connect to TX's ANALOG audio input, then open audio configuration, set the audio input as ANALOG audio input, then output audio will be ANALOG audio.

System	Network	Audio	Video	OSD	Time
	Audio	HDMI			
	Sample	48000			
	Bitrate	180	Bitrate32~320kbps		
	Encoder	AAC			
	Analog Vol	40	Analog Vol range0~100		
		Save			

7.5. Video configuration

System	Network	Audio	Video	OSD	Time
Main			Sub		
Encodeing	h.264		Encodeing	h.264	
Resolving power	1920*1080		Resolving power	1280*720	
FPS	30		FPS	30	
Bitrate	vbr		Bitrate	cbr	
Bitrate	4096	Bitrate64~102400kbps	Bitrate	256	Bitrate64~4096kbps
GOP	60	GOP range5-300	GOP	60	GOP range5-300
	Save				

7.6. OSD configuration

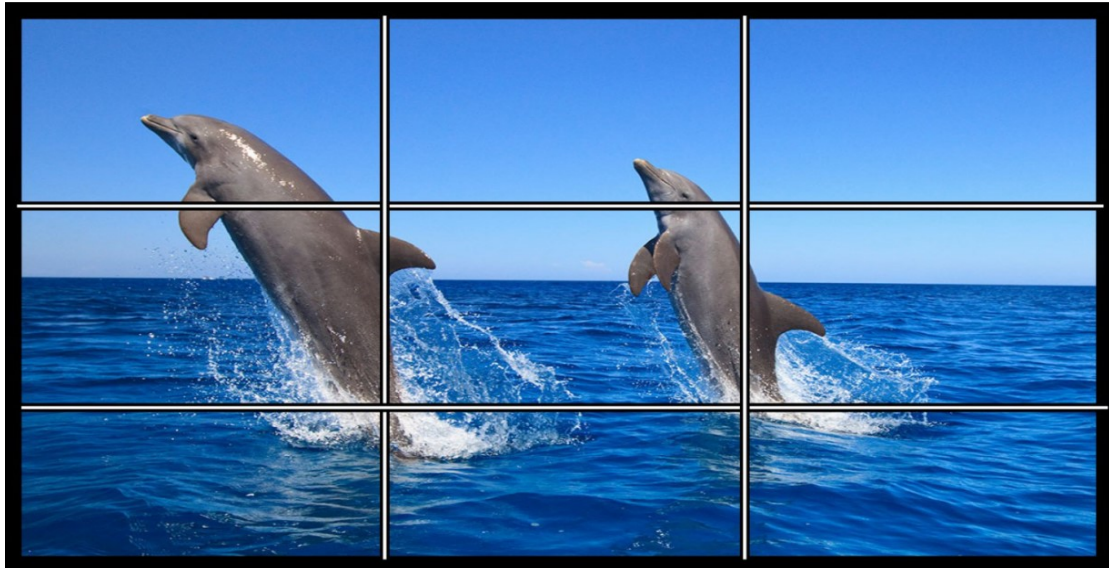
System	Network	Audio	Video	OSD	Time
Select	Region 1				
Switch	closed				
Type	Text				
X	0 [0-3840]Be careful not to exceed the resolution width,otherwise it will not be visible				
Y	0 [0-2160]Be careful not to exceed the resolution width,otherwise it will not be visible				
Text					
Font Size	0 [1-2000]				
Transparent	0 [0-255]				
Background color	<div style="display: flex; align-items: center;"> <div style="width: 20px; height: 20px; background-color: black; margin-right: 5px;"></div> <input type="text" value="Color sel"/> </div>				
foreground color	<div style="display: flex; align-items: center;"> <div style="width: 20px; height: 20px; background-color: black; margin-right: 5px;"></div> <input type="text" value="Color sel"/> </div>				
<input type="button" value="Save"/>					

7.7. Time configuration

System	Network	Audio	Video	OSD	Time
时区	<div style="border: 1px solid #ccc; padding: 5px;"> <div style="display: flex; align-items: center;"> <div style="width: 20px; height: 20px; background-color: black; margin-right: 5px;"></div> <input type="text" value="Color sel"/> </div> </div>				
Server synchronization	<div style="border: 1px solid #ccc; padding: 5px;"> <div style="display: flex; align-items: center;"> <div style="width: 20px; height: 20px; background-color: black; margin-right: 5px;"></div> <input type="text" value="Color sel"/> </div> </div>				
<input type="button" value="Save"/>					

7.8. Video Wall

- 1) In Video wall interface, One source splicing into a picture by multiple groups of RX devices.
- 2) The maximum resolution of each group of RX devices is 4K30hz



- 3) Edge shielding (screen width, screen height, display width and display height) can be set separately for each group of splicing images.

System Network Audio OSD Time **Wall**

Bezel and Gap

OW

OH

VW

VH

UNIT: 0.1mm

4) Step of doing Video Wall

- Configure the corresponding TX and RX devices as the same channel in the system configuration interface
- In the "Video Wall" interface of RX, select the required number of splices
 Number of vertical monitors: 0~10 (up to 8 monitors can be spliced in one column)
 Number of horizontal monitors: 0~10 (up to 8 monitors can be spliced in one row)

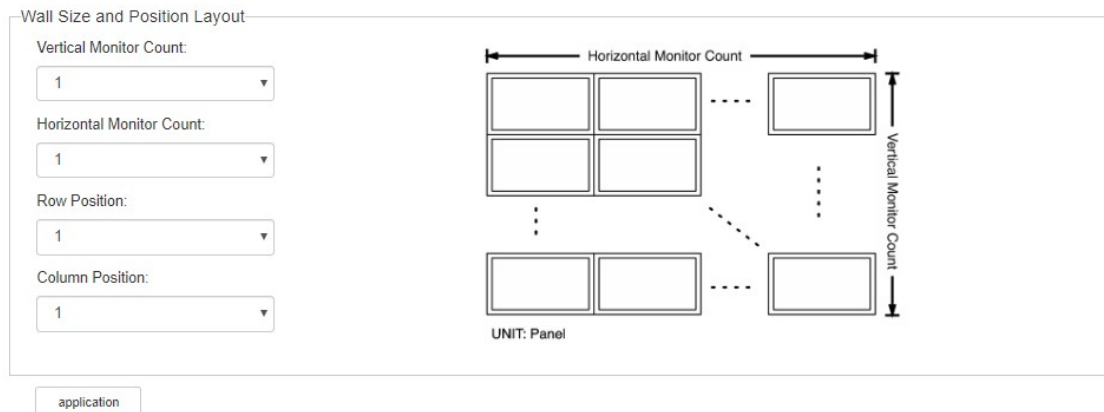
- Select the position of the RX device on the splicing screen

Row position: 0~10

Column positions: 0~10

(example: if the row position is set to 1 and the column position is set to 1, RX will play the video on the display of the first column of the first row.)

Note: if RX returns to normal one-to-many or many-to-many, re-enter "system configuration" and reset the channel



MAINTENANCE

Clean this unit with a soft, dry cloth. Never use alcohol, paint thinner or benzene to clean this unit.

PRODUCT SERVICE

(1) Damage requiring service:

The unit should be serviced by qualified service personnel if:

- The DC power supply cord or AC adaptor has been damaged;
- Objects or liquids have gotten into the unit;
- The unit has been exposed to rain;
- The unit does not operate normally or exhibits a marked change in performance;

The unit has been dropped or the cabinet damaged.

(2) **Service Personnel:** Do not attempt to service the unit beyond that described in these operating instructions. Refer all other servicing to authorized servicing personnel.

(3) **Replacement parts:** When parts need replacing ensure the servicer uses parts specified by the manufacturer or parts that have the same characteristics as the original parts. Unauthorized substitutes may result in fire, electric shock, or other Hazards.

(4) **Safety check:** After repairs or service, ask the servicer to perform safety checks to confirm that the unit is in proper working condition.

WARRANTY

If your product does not work properly because of a defect in materials or workmanship, our Company (referred to as "the warrantor") will, for the length of the period indicated as below,

(Parts(2)Year, Labor(90) Days) which starts with the date of original purchase ("Limited Warranty period"), at its option either(a) repair your product with new or refurbished parts, or (b) replace it with a new of a refurbished product. The decision to repair or replace will be made by the warrantor.

During the "Labor" Limited Warranty period there will be no charge for labor.

During the "Parts" warranty period, there will be no charge for parts. You must mail-in your product during the warranty period. This Limited Warranty is extended only to the original purchaser and only covers product purchased as new. A purchase receipt or other proof of original purchase date is required for Limited Warranty service.

MAIL-IN SERVICE

When shipping the unit carefully pack and send it prepaid, adequately insured and preferably in the original carton. Include a letter detailing the complaint and provide a day time phone and/or email address where you can be reached.

LIMITED WARRANTY LIMITS AND EXCLUSIONS

1) This Limited Warranty ONLY COVERS failures due to defects in materials or workmanship, and DOES NOT COVER normal wear and tear or cosmetic damage.

The Limited Warranty ALSO DOES NOT COVER damages which occurred in shipment, or failures which are caused by products not supplied by warrantor, or failures which result from accidents, misuse, abuse, neglect, mishandling, misapplication, alteration, faulty installation, set-up adjustments, misadjustment of consumer controls, improper maintenance, power line surge, lightning damage, modification, or service by anyone other than a Factory Service center or other Authorized Servicer, or damage that is attributable to acts of God.

2) THERE ARE NO EXPRESS WARRANTIES EXCEPT AS LISTED UNDER "LIMITED WARRANTY COVERAGE". THE WARRANTOR IS NOT LIABLE FOR INCIDENTAL OR CONSEQUENTIAL DAMAGES RESULTING FROM THE USE OF THIS PRODUCT, OR ARISING OUT OF ANY BREACH OF THIS WARRNTY. (As examples, this excludes damages for lost time, cost of having someone remove or re-install an installed unit if applicable, travel to and from the service, loss of or damage to media or images, data or other recorded content. The items listed are not exclusive, but are for illustration only.)

3) PARTS AND SERVICE, WHICH ARE NOT COVERED BY THIS LIMITED WARRANTY, ARE YOUR RESPONSIBILITY.