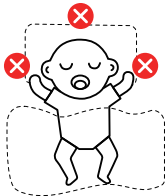


User Manual



WARNING



1. For safety reasons, please **DO NOT** place the baby monitor close to or directly above the baby's head.
2. To gain the best observance and detection, it is highly recommended to place the baby monitor and the floor stand near the center of the crib.
3. **ALWAYS** check the baby monitor is attached or mounted firmly and does not wobble with any movement.



Smart Baby Monitor

Keeping your precious little ones safe and protected

Bella U1

Download App

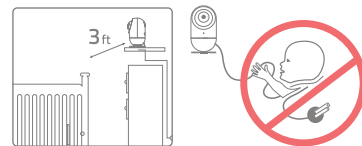


Thank you for supporting us and
purchasing our Smart Baby Monitor Bella!
We feel proud and honored to
become your ultimate parenting assistant.

Safety Instructions

WARNING:

- **STRANGULATION HAZARD**-Children have STRANGLED in cords . Keep this cord out of the reach of children (more than 3 ft (1m) away).
- **NEVER PLACE THE CAMERA OR CORD IN OR NEAR CRIB OR PLAYPEN**. Secure the cord at least 3 ft away from crib or playpen.
- **CHOKING HAZARD**-This product contains small parts which may cause choking.
- **SHOCK WARNING**-To prevent electric shock, NEVER use the camera near water, including near a bathtub, sink, laundry tub, wet basement, etc.
- **CAUTION**-Only insert a battery pack of the same type. Risk of explosion if battery is replaced with an incorrect type.
- Use only the DC adapters provided.
- Adult assembly is required. Keep small parts away from children when you are assembling.
- This product is not a toy. Do not allow children to play with it.
- This product is NOT intended to replace proper adult supervision of children.
- You MUST check your child's activity regularly, as this product will not alert parents to silent activities of a child.
- Before using this product, read and follow all instructions and warnings contained in this booklet.
- Do not allow water damage to the camera unit, power adapter, or charging cable which cause overheating of the charging components.
- Do not use unofficial third party charging cables to charge the device. This may result in overheating of the charging port. Only use the charging cables provided in the box.
- Do not use unofficial third party power adapters, especially high wattage adapters. This may result in overheating of the cable and/or charging port. Only use the adapter provided in the box.



FCC Statements

- These devices, including Baby Camera, comply with Part 15 of the FCC rules. Operation is subject to the following two conditions:
These devices may not cause harmful interference. These devices must accept any interference received, including interference that may cause undesired operation, Class B Digital Device. These equipments have been tested and found to comply with the limits for a Class B digital device pursuant to Part 15 of the FCC Rules. These limits are designed to provide reasonable protection against harmful interference in a residential installation. These equipments generate, use, and can radiate radio frequency energy and, if not installed and used in accordance with the instructions, may cause harmful interference to radio communications. However there is no guarantee that interference will not occur in a particular installation. If these equipments do not cause harmful interference to radio or television reception, which can be determined by turning the equipments off and on, the user is encouraged to try to correct the interface by one or more of the following measures.
 - Reorient or relocate the receiving antenna.
 - Increase the separation between the equipment and receiver.
 - Connect the equipment into an outlet on a circuit different from that to which the receiver is connected.
 - Consult an experienced radio / TV technician for help.
- Caution to the user. The Federal Communications Commission warns the users that changes or modifications of the unit not expressly approved by the party responsible for compliance could void the user's authority to operate the equipments.
- **Radiation Exposure Statement**
This equipment complies with FCC radiation exposure limits set forth for an uncontrolled environment. This equipment should be installed and operated with minimum distance 20cm between the radiator & your body.

Customer Service

Warranty Information

Product Name	Item	Warranty
Bella Smart Baby Monitor	Camera	12 months
	Power Adapter	

Please note that the above warranty does not cover the following:

- Wear and tear through normal product usage
- Accidental damage caused by product misuse
- The warranty will also be deemed void if any product parts are replaced by non-approved personnel

Support Information

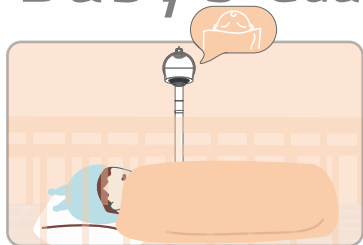
- Should you have any questions, please feel free to contact us via our official email address:
- hello@ebemate.com
 - www.ebemate.com

Catalog

<u>Baby's Guardian</u> P1	<u>Product Introduction</u> P3	<u>Quick Start</u> P5
<u>Connect App</u> P7	<u>Network & Operating System Requirements</u> P9	<u>Specifications</u> P10
<u>Placement</u> P11	<u>Multifunctional Base</u> P12	<u>Wall Support Set Up</u> P13
<u>Customer Service</u> P15	<u>Safety Instructions</u> P16	

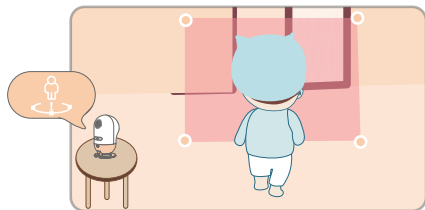
COME

Baby's Guardian



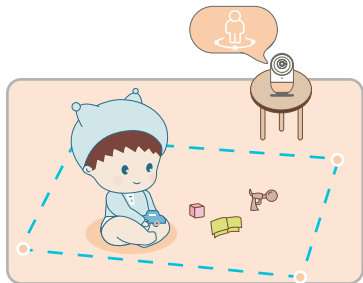
• Face Detection

Bella will alert you if your baby's face is not visible or rolls over in the crib.



• Danger Zone

Bella will alert you if your baby is approaching hazardous area you previously set.



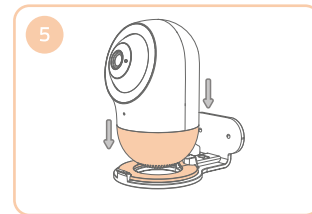
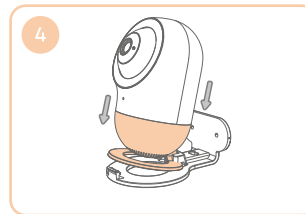
• Safe Zone

Bella will alert you if your baby leaves a predefined 'Safe Zone'

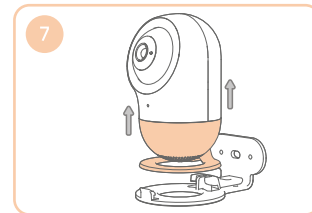
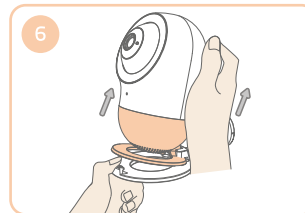


• Cry Detection

Bella will alert you if your baby cries

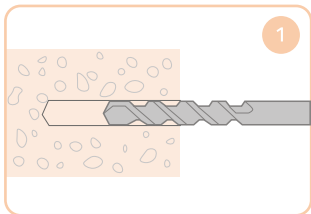


To attach Bella to the Wall Support

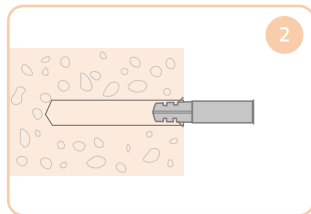


To remove Bella from the Wall Support

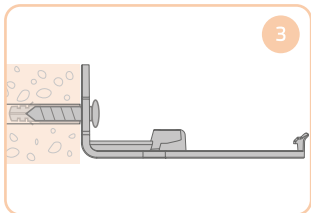
Wall Support Set up



Drill hole

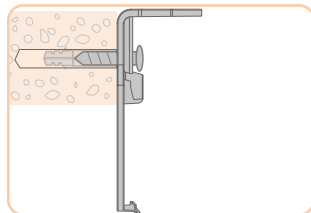


Put the expansion bolt into the hole

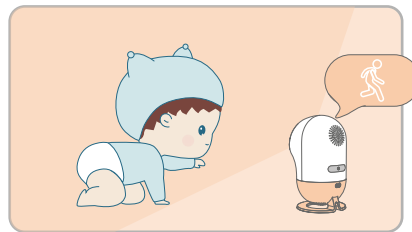


Method 1:
Put the screw through the hole shown to
mount monitor horizontally

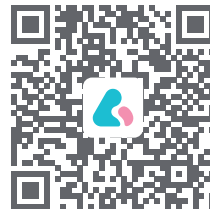
or



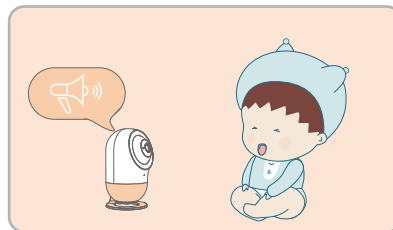
Method 2:
Put the screw through the hole shown to
mount monitor vertically



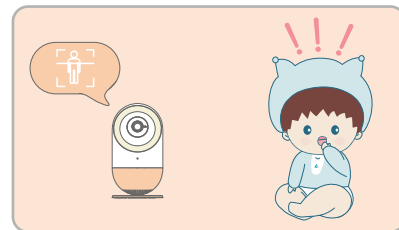
- **Movement Tracking**
Bella will alert you if there's any object movement



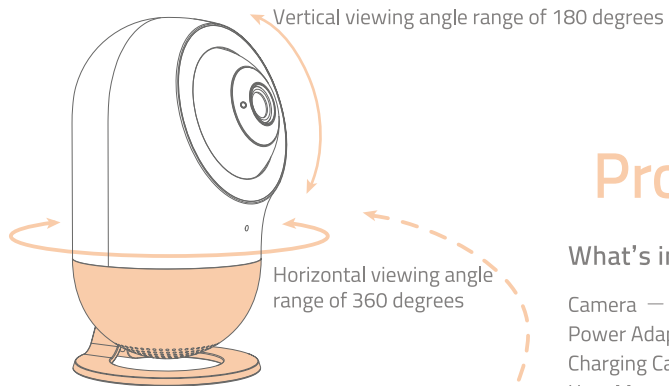
QR CODE
[Learn how to use AI features](#)



- **Sound Detection**
Bella will alert you if there's any loud noises near your baby



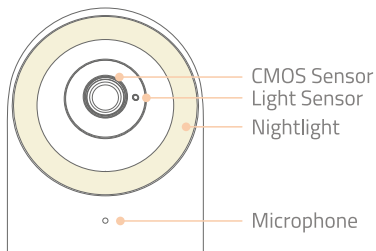
- **Human Detection**
Bella will alert you as soon as someone enters the same space as your baby



Product In

What's included in your b

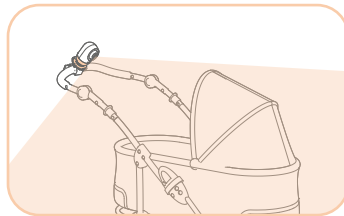
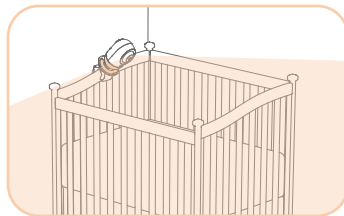
- Camera — — — — —
- Power Adapter — — — — —
- Charging Cable — — — — —
- User Manual — — — — —
- Wall Support — — — — —
- Configure PIN — — — — —
- Wall-Mounting Parts — — — — —



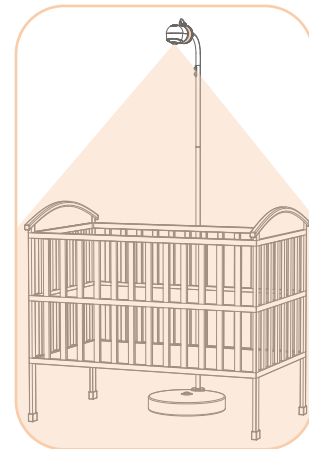
P3

Multifunctional Base Floor Stand

Can be purchased separately



- **Multifunctional Base**
Can be easily attached to almost any crib or to your buggy / stroller

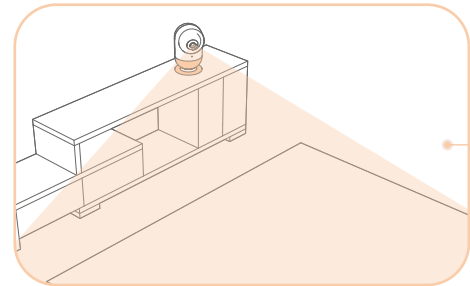


- **Floor Stand**
Place near the center of the crib. Slide the base of the Bella device all the way into the holder on top of the Floor Stand until it stays firm.

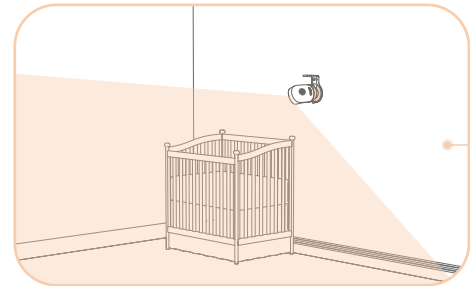
P12

Placement

Bella has large battery capacity (6-8 hrs) in which can be placed and moved around flexibly without plugging into power.



When placing Bella on a table or unit, please ensure the surface is flat and stable for optimum performance.

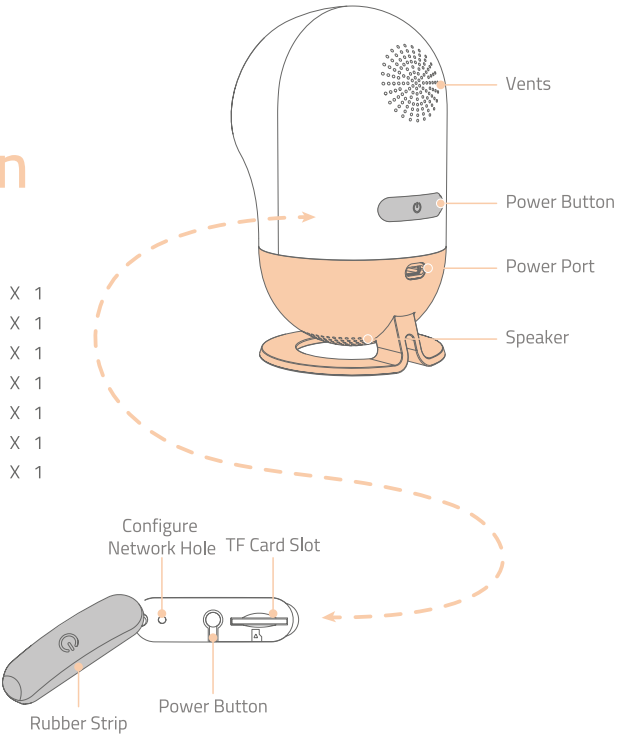


When you mount Bella on a wall, please ensure Bella is always kept out of the reach of toddlers and young

Introduction

Box?

-----	X 1
-----	X 1
-----	X 1
-----	X 1
-----	X 1
-----	X 1
-----	X 1



Quick Start

1. Check network frequency

Please note that Bella only supports 2.4G Wi-Fi (it doesn't currently support 5G Wi-Fi)



2. Check phone version

Please note that the App will only run on Android 5.0 & above or iOS 9.0 & above



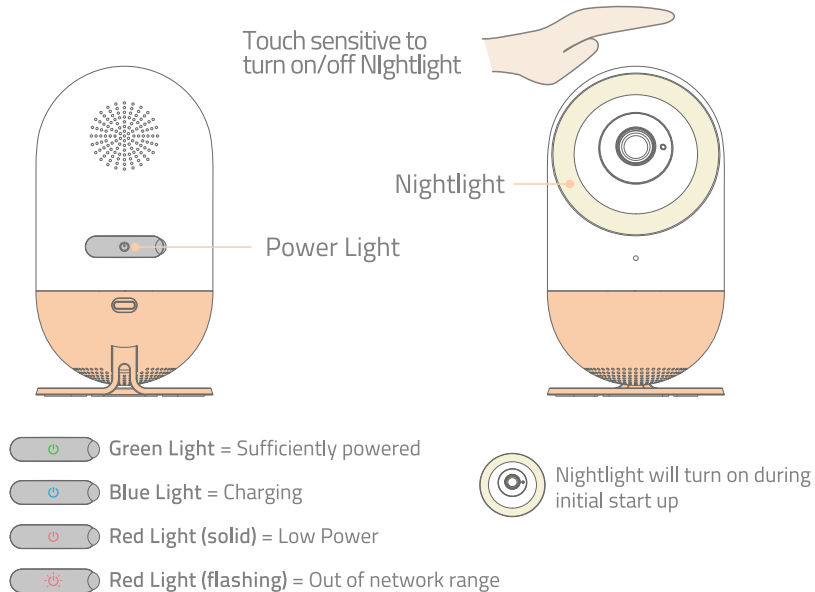
Specifications

Input Voltage:	5V	Operating Power:	< 1.5A
IR/Night Vision:	YES	Picture Sensor:	ov2735
Built-Len:	EFL4.21 F2.8	Operating Temperature:	0~40 C
Power Adapter:	5V/2A	Charging Cable:	2m
Exposure Control:	Auto	White Balance Control:	Auto
Vertical Turning Angle:	355°	Horizontal Turning Angle:	110°
Other Special Feature:	Internal battery	Dimensions(L xW xH):	2.95×3.35×5.51(in)

Product Warnings

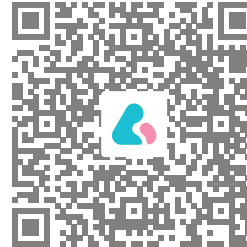
- Please keep this product and any associated small parts out the reach of children
- Please do not use unofficial 3rd party power adaptors which may present a fire risk
- Please keep the product dry at all times to prevent malfunction or safety issues
- Note that ebemate handle the protection of data security seriously and your privacy is of utmost importance to us. For more information, please visit www.ebemate.com

Network & Operating System Requirements



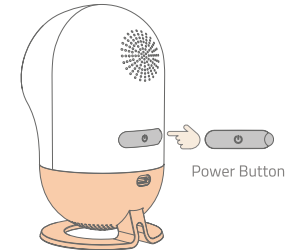
3. Download App

Scan QR code to download App



4. Start Bella

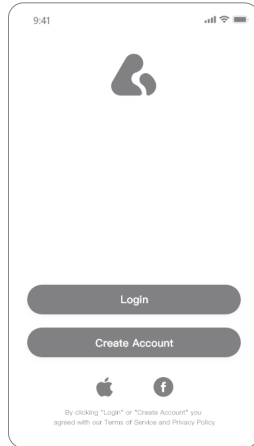
Press and hold power button until Nightlight illuminates



Connect App

1.Download & Register

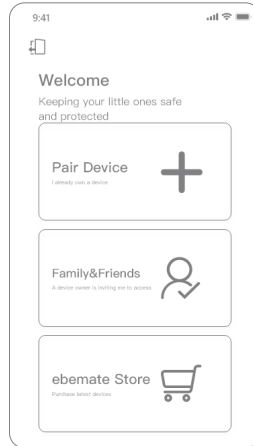
Download the App and follow the onscreen instructions to complete your initial registration



P7

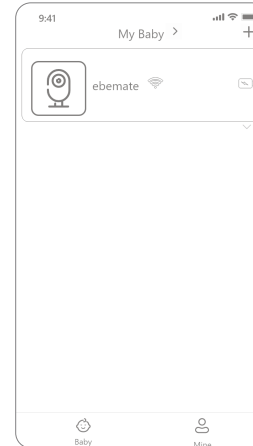
2.Pair Device

Tap 'Pair Device' to pair your phone with your new smart baby monitor



3. Ready to begin

Now start your journey with Bella!



P8