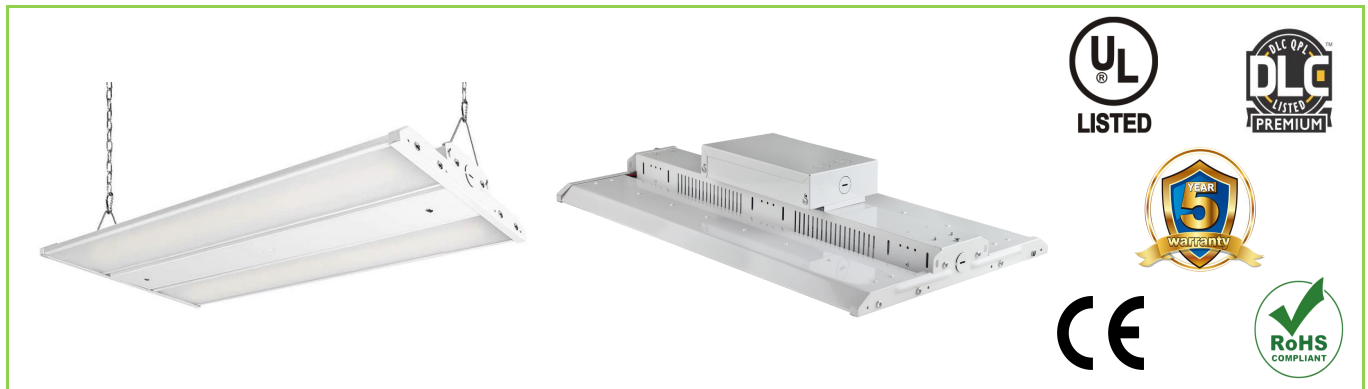


## LED Linear High Bay Light

### Product Description

Eagle Star LED Linear High Bay fixtures are the ideal replacement of traditional lamps in locations with scalability for high ceiling applications 15' to 50' ceiling such as warehouse, factory, Convention Centre, Retail, Showroom & Storage Lighting, etc. These fixtures offer 50,000 hours of life and substantially reduce maintenance costs and are available with high lumen outputs of 140lm/W.

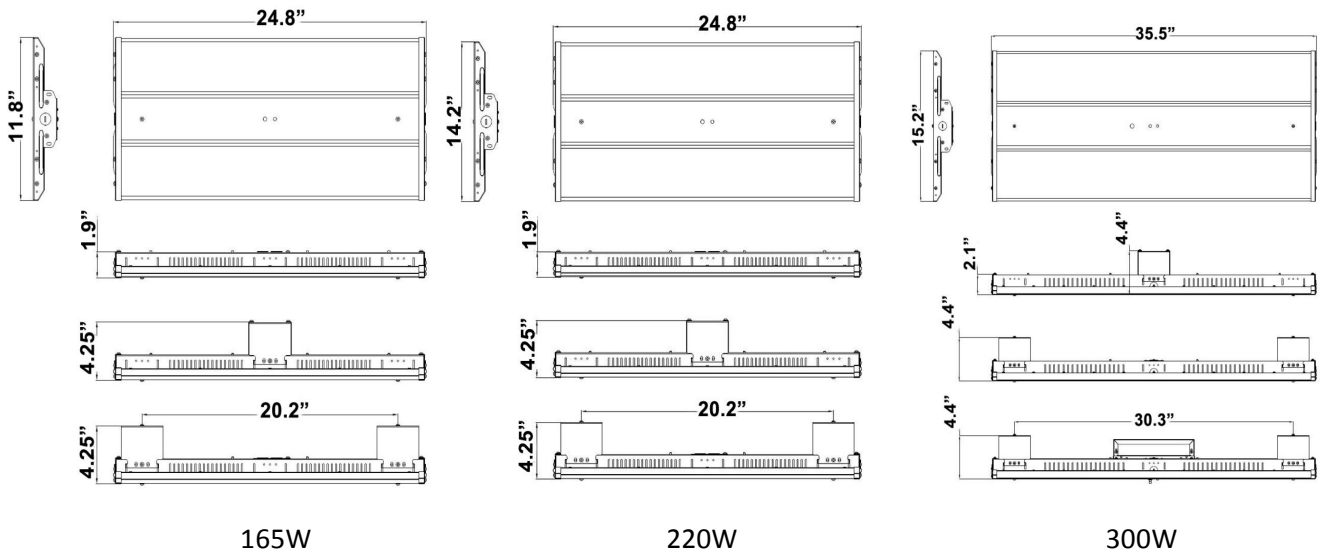


- Voltage 100-277V AC
- Light Efficiency 140lm/w
- Lifespan above 50,000 hours
- Qualified with CE, RoHS, UL, DLC
- LM-79/80 data available
- Warranty: 5 years
- Two kinds of installations for you to install easily
- UL approved driver with 0-10V dimming
- Superior Photometric Performance
- Microwave motion sensor and battery backup available
- Ambient temperature from -30°C to 50°C
- IP 44

### Product Parameters

Input Power	165W	220W	300W
LED Chips	PHILIPS LEDS		
Initial Lumens	23,100lm	36,300lm	42,000lm
Efficacy	140lm/w	140lm/w	140lm/w
Length	2FT	2FT	3FT
CCT	5000K		
Beam Angle	120°		
Input Voltage	100-277V AC 50Hz/60Hz		
Working Temperature	-30°C Up to 50°C (-22°F up to 122°F)		
Certification	CE, RoHS, UL cUL, DLC Premium		
Warranty	5 years		
Carton/Pieces	2	2	1
G.W	8kg	9.9kg	8.6kg
Carton Size	72*36*20cm	72*42*20cm	107*46*14cm

## Dimensions



165W

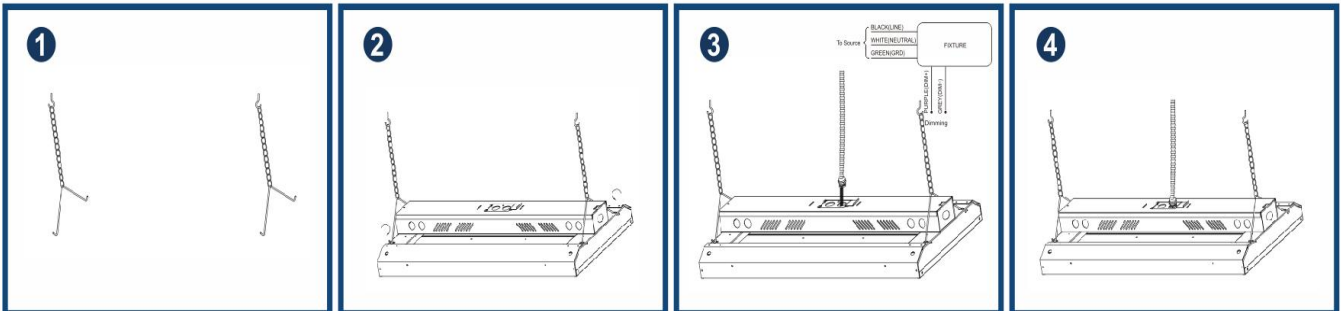
220W

300W

## Installation

### Chain Mount

1. Hook the chain as below picture.
2. Insert the hook into the slotted holes, as shown below.
3. Turn off the power, and make wiring connections with terminal cap. (see wiring instruction below)
4. Insert the wire terminal joint to the wire entry.



### Pendant Mount

1. Screw on the terminal cap.
2. Fixed the high bay on the steeve with provided hardware.
3. Turn off the power and make wiring connections with terminal cap. (see wiring instruction below)
4. Attach both face platets to the junction box with the provided hardware.

