

LED UFO High Bay Light



Product Description

Eagle Star LED UFO styled LED High Bay Light Fixtures look like a UFO flying ship, which makes them more futuristic and full of the feeling of high-tech. These LED high bay fixtures come in two models, which can replace 250W to 1200W Metal Halide Lamp. Beam angle is 120°, which is ideal for warehouse, garage, workshop, gymnasium, parking place etc. The starting time is less than 0.5 s in -40°C. Normal cable length is 3ft or 6ft.

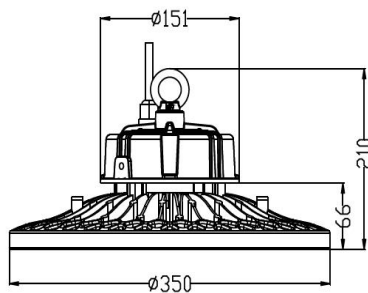


- Voltage 100-277V & 200-480V
- Efficacy 140lm/w
- Lifespan above 50,000 hours
- Qualified with CE, RoHS, cETL, ETL, DLC
- UL approved LED driver
- 5 years warranty
- IP 66
- Die-casted aluminum housing is polyester powder coated to be rust and corrosion proof
- High efficiency, energy saving, eco-friendly
- Sealed fixture is dirt and bug free
- PIR and motion sensor available
- Ambient temperature from -40°C to 50°C

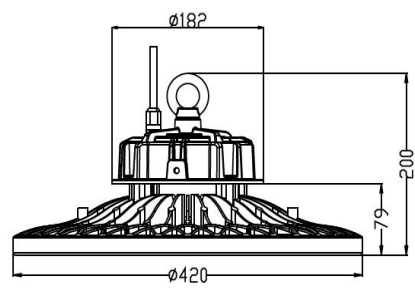
Product Parameters

Input power	100W	150W	200W	240W	300W
LED Chips	PHILIPS LEDs				
Lumens	14,000lm	21,000lm	28,000lm	33,600lm	42,000lm
Efficacy	140lm/w	140lm/w	140lm/w	140lm/w	140lm/w
CRI	> 80Ra				
CCT	5000k				
Beam angle	120°				
Input voltage	100-277V/200-480V AC				
Working temperature	-40°C Up to 50°C (-40°F up to 122°F)				
Certification	CE, RoHS, cETL, ETL, DLC premium				
Warranty	5 years				
Replacement	250W MH	480W MH	750W MH	1000W MH	1200W MH
piece/carton	2	2	2	2	2
G.W	10kg	11kg	12kg	16kg	17kg
BOX dimensions	39x36x39cm	39x36x39cm	39x36x39cm	47x42x47cm	47x42x47cm

Dimensions

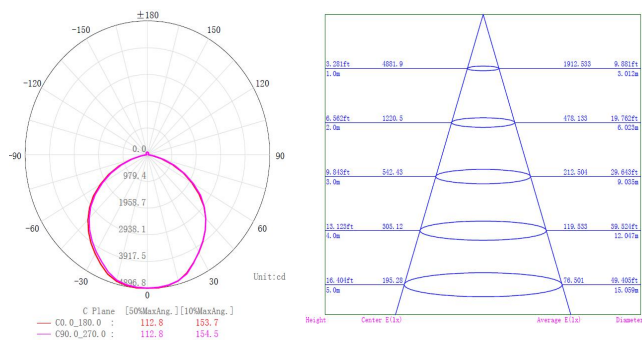


100W/150W/200W

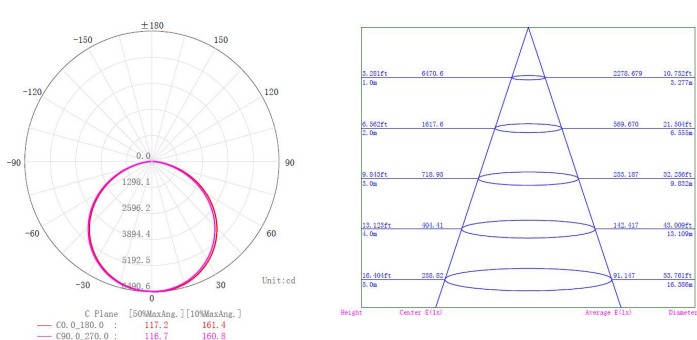


240W/300W

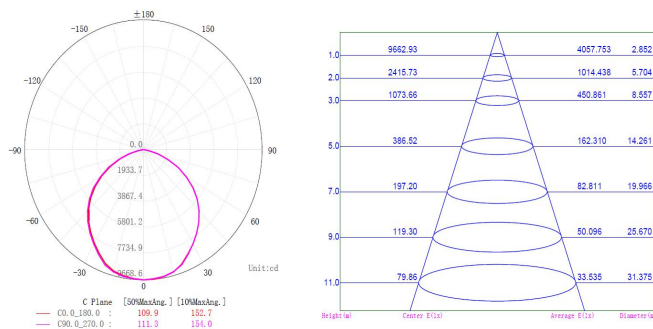
Photometrics



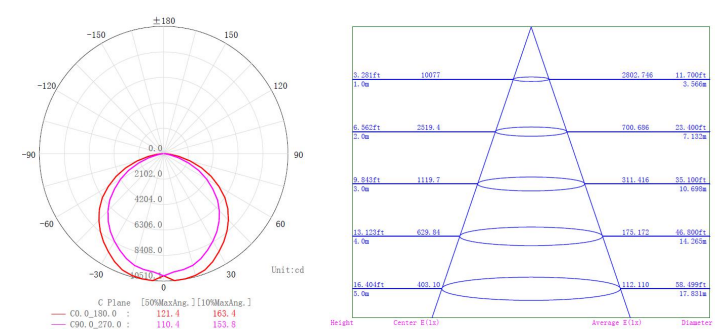
100W



150W



200W



240W

