


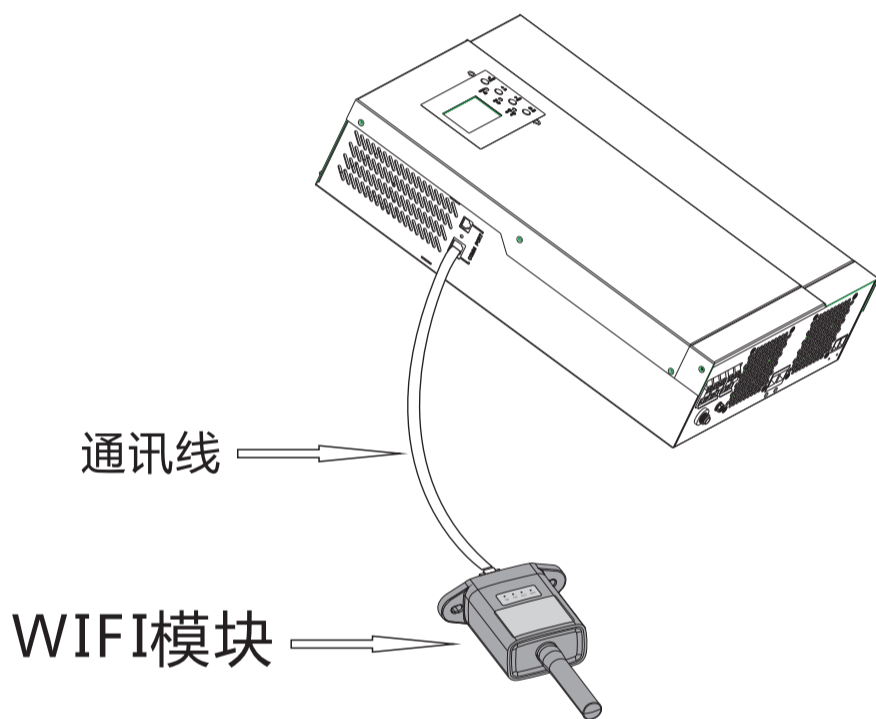
储能逆变器 (Wi-Fi版) 数采器 快速安装指南

1. 电气连接

- ① 根据数采器型号在右方找到对应的接口编码。
- ② 根据接口编码按照对应图示进行电气连接。
- ③ 确认数采器各指示灯状态正常 (步骤2.3连网设置成功后, 四灯常亮为正常)。

| 数采器型号 | 接口编码 | 接口图例 |
|----------------|------|---|
| Wi-Fi Plug Pro | ① |  |

- ① 将通讯线一头与WIFI模块相连, 另一水晶头与逆变器COMM口相连, 并插紧。将WIFI模块放置在安全位置并固定, 请不要直接放置在逆变器上, 避免产生干扰。



2. 无线路由器连接

2.1 APP下载

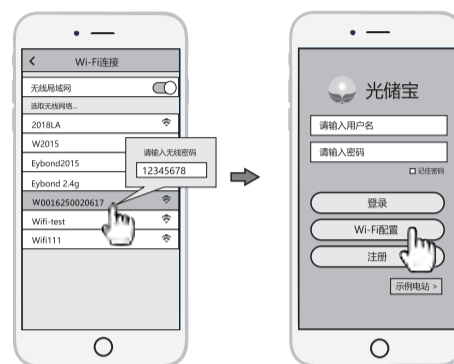
- ① 扫描右方的二维码, 下载APP。



光储宝(iOS)



光储宝(Android)

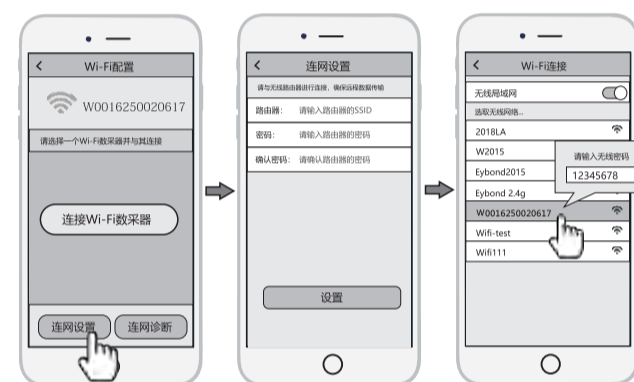


2.2 Wi-Fi数采器连接

- ① 打开手机的无线局域网, 找到与数采器PN号相同的Wi-Fi进行连接。(初始密码: 12345678)。
- ② 手机连接数采器Wi-Fi后, 打开APP, 点击“Wi-Fi配置”按钮, 进入“Wi-Fi配置”页面。

2.3 连网参数设置

- ① 在“Wi-Fi配置”页面中, 点击“连网设置”按钮, 进入该界面。
- ② 在“连网设置”页面, 填写路由器相关信息, 完成连网设置。
- ③ 数采器重启成功后, 回到手机无线局域网重新连接步骤2.1所连接的数采器Wi-Fi。



3. 注册账号与添加数采器

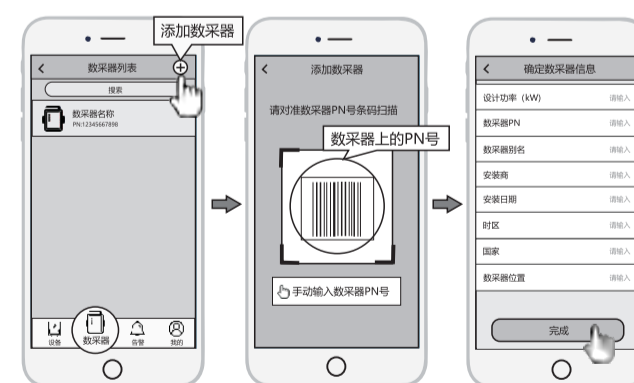


3.1 账号注册

- ① 在APP首页, 点击“注册”按钮, 按提示填写相关信息, 完成注册。

3.2 添加数采器

- ① 登录APP, 选择“数采器列表”菜单, 点击右上角的“+”按钮, 进入到“扫描二维码”界面。
- ② 扫描数采器的PN号, 添加数采器; 若扫描不成功, 请手动输入。
- ③ 根据提示输入相关信息, 完成数采器添加。




Wi-Fi Plug Pro

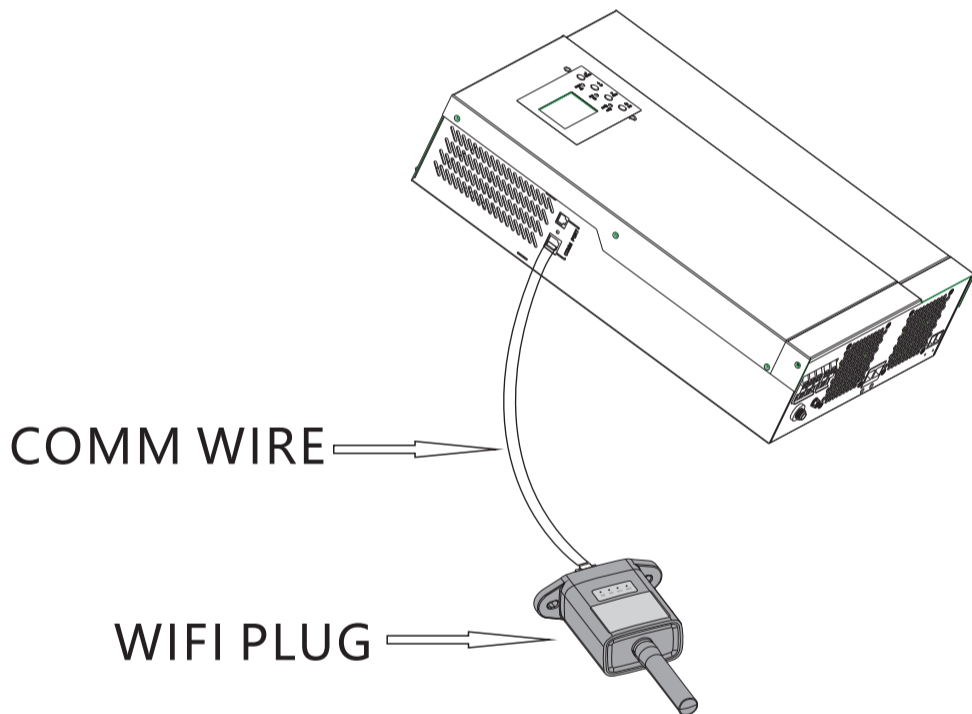
Quick Installation Guideline

1. Installation

- Find the corresponding interface code on the right table, according to the model of the datalogger.
- Based on the corresponding icon, finish the installation according to the interface code.
- Confirm the status of the LED light (After step 2.3, when 4 LED light keep on, showing the normal working status).

| Datalogger Model | Interface Code | Interface Icon |
|------------------|----------------|---|
| Wi-Fi Plug Pro | 1 |  |

- Connect one end of the communication cable to the WIFI module, and connect the other RJ45 port to the COMM port of the inverter and plug it in tightly. Place the WIFI module in a safe position and make it stable. Please do not place it directly on the inverter to avoid interference.



2. Wireless Router Connection

2.1 Download APP

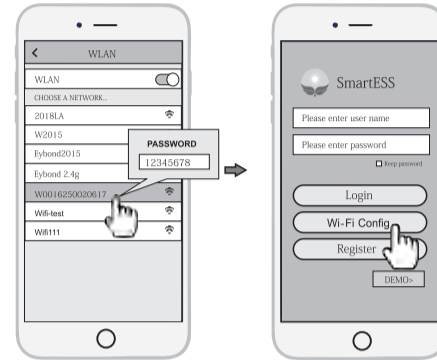
- Scan the QR Code on the right side and download the APP.



SmartESS(iOS)



SmartESS(Android)

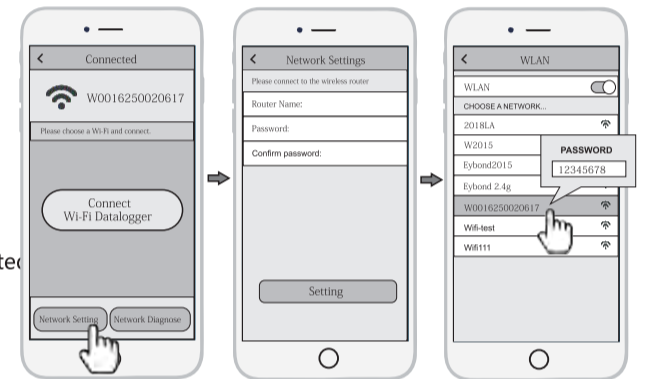


2.2 Connect Wi-Fi Datalogger

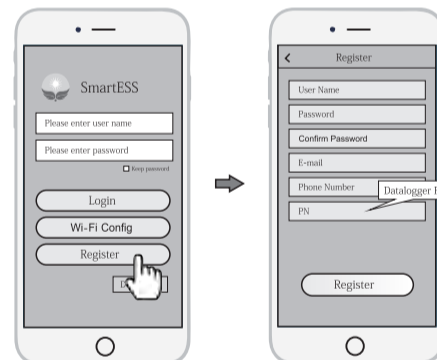
- Select the same number of Wi-Fi Plug Pro PN to connect on your phone WLAN. (InitialPassword:12345678)
- Open the APP, tap the Wi-Fi Config button to enter this page.

2.3 Network Setting

- Then tap the Network Setting button.
- According to the prompts, type in the information to finish the network setting.
- After the Wi-Fi Plug Pro is restarted, reconnect the Wi-Fi which connected by step 2.1.



3. Create Account And Add Datalogger



3.1 Create Account

- Open the APP, tap the **Register** button to enter this page.
- According to the prompts, type in the information to create an account.

3.2 Add Datalogger

- Login the account and click the **Datalogger** button. Tap the "+" button on the top-right corner of the Datalogger page.
- Scan the PN on the Wi-Fi Plug Pro, or input it manually.
- According to the prompts, type in the information to finish add datalogger.

