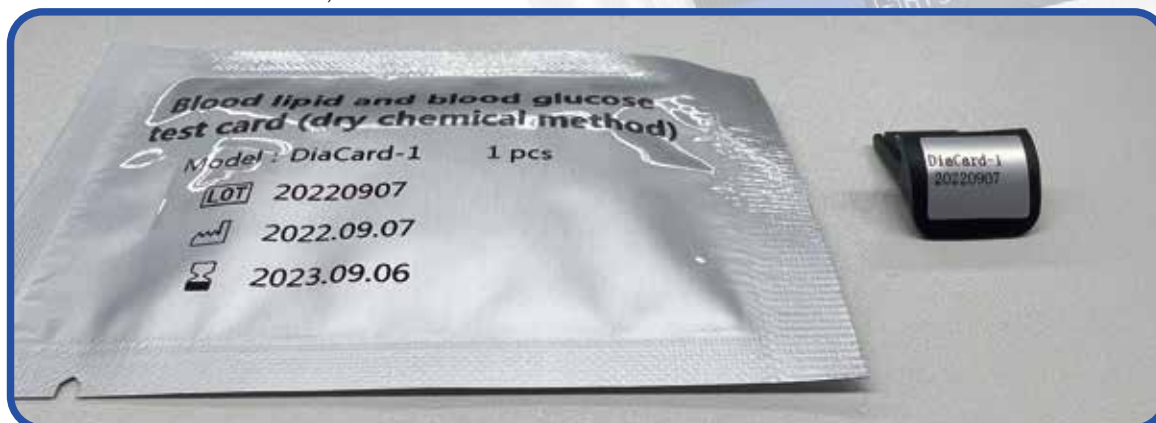


Test cards and quality control cards for the analyser

1. Ensure that the inserted code card is the same colour as the test card when using it.

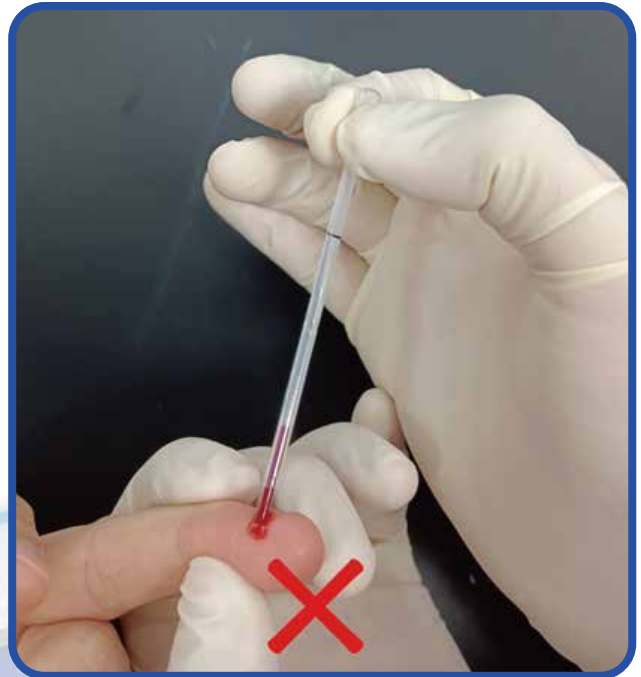
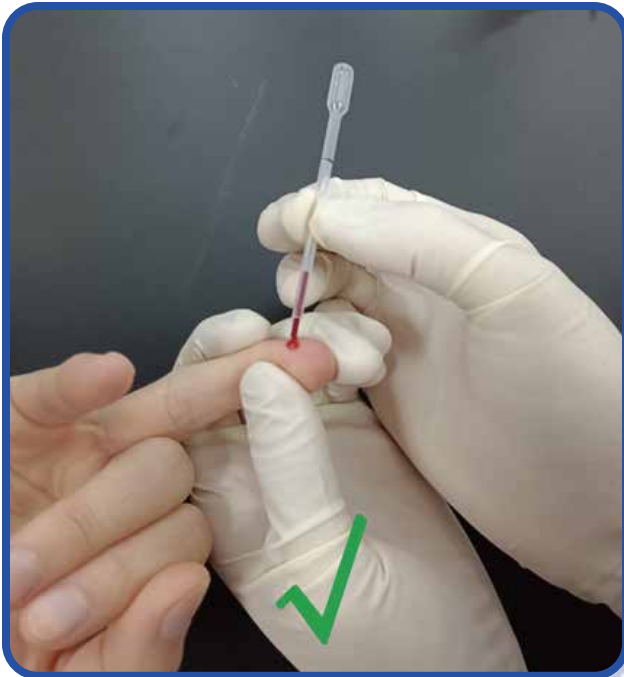


2. Ensure that the batch number and model number on the code card are the same as the test card packaging when using. New kits are supplied with new code cards, do not reuse them.

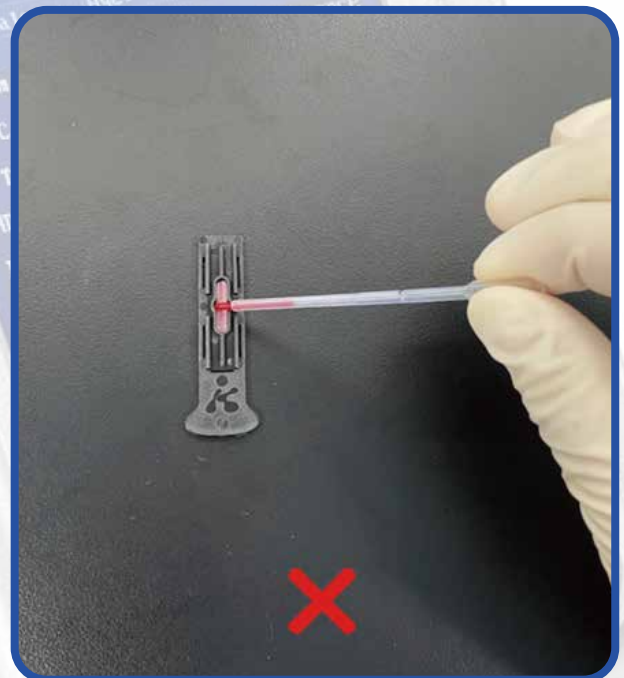


Precautions and operation demonstration

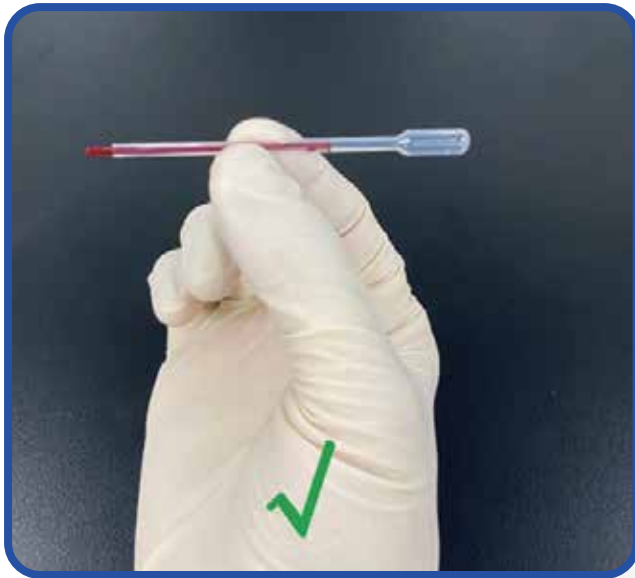
1. When collecting blood from the blood collection tube, pinch your fingers in the middle of the tube, without blocking the black scale line and without pinching the top.



2. Insert the test card before adding the sample, not outside the machine.



3. Take blood to the black mark when collecting blood at the end, and try to avoid air bubbles.



4. Keep the blood tube as horizontal as possible after collection to prevent blood from flowing out of the ends.



5. Add the sample in the middle of the test card.



※Note in particular that the sample must be added in one go and must not be repeated more than once.



Use Twitter to scan the QR code or go to the website:
<https://youtu.be/KmFqEdeEO24> to watch a video of the procedure