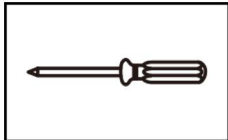


► Notes before installation

1. Confirm whether the inlet pipe and corner valve have been properly installed before installation.
2. Before installation, be sure to clean the dust, sand and other foreign bodies in the water supply pipe to ensure that the inlet pipe is free of sundries, so as not to shadow sound water outlet function.
3. Inlet water pressure of $0.05\text{Mpa} \leq \text{inlet water pressure} \leq 0.75\text{Mpa}$, if the water pressure is lower than 0.05Mpa , it may cause poor effect for the water outlet.
4. The cold and hot water piping should not be mismatched, and the heating pipes should not use steam.

► Recommend Tools And Materials



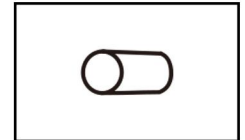
Screwdriver



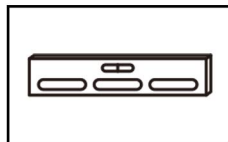
A Tape Measure



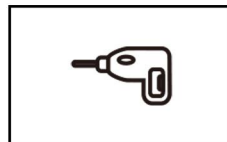
Sealant



PVC Tube



Level

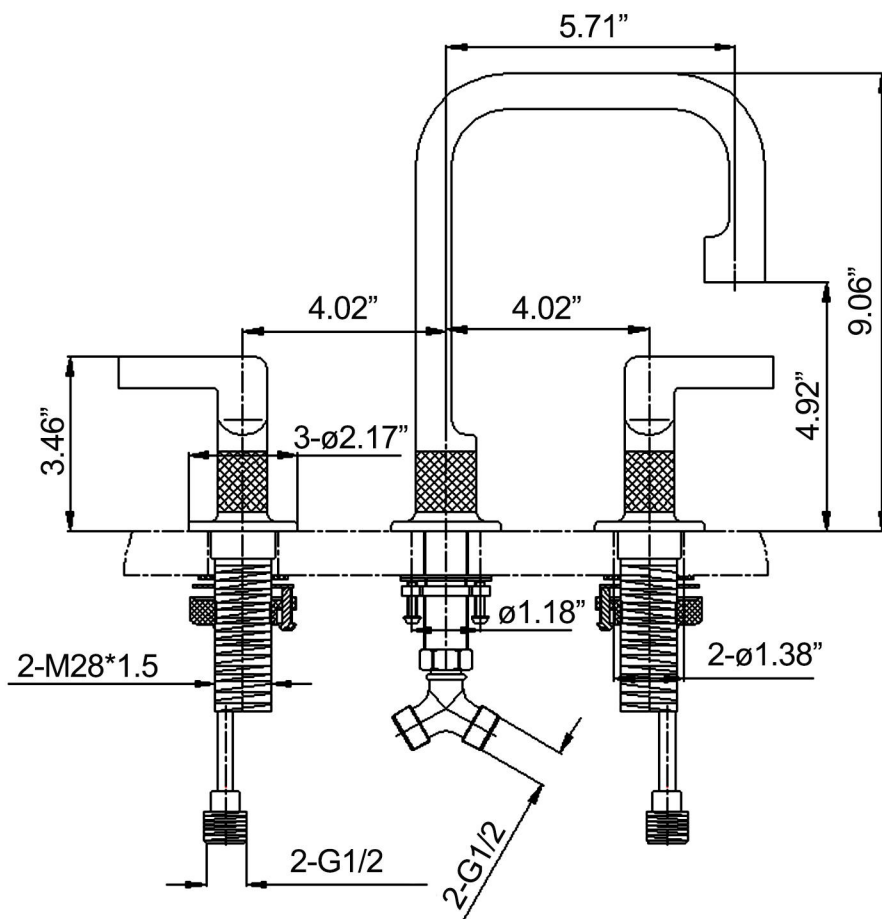


Impact Drill



Adjustable Wrench

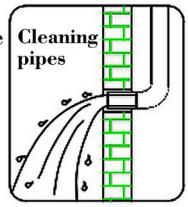
► Installation Dimension



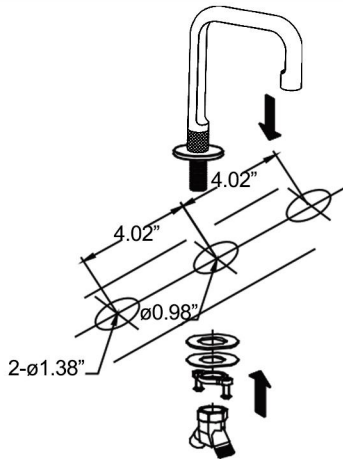
This product has been inspected and debugged by the factory to the best condition. Please do not disassemble and assemble it yourself.



Before installing the faucet, please be sure to remove sundries and sludge from the water pipe to prevent sundries from blocking the faucet.

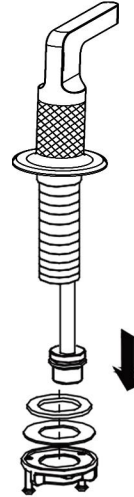


1



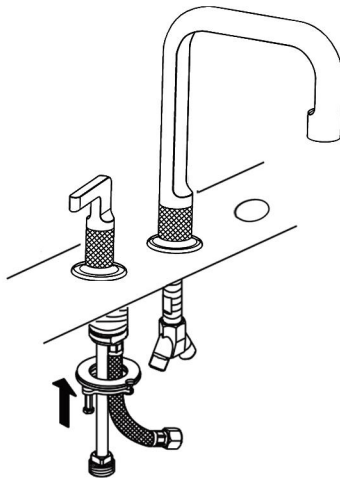
1. Fixing the nut and remove the washer bolt of the three-way adapt. Then install the water outlet into the hole on the counter. Install the washer bolt and fix the nut to lock the water outlet. After that, install the three-way adapt.

2



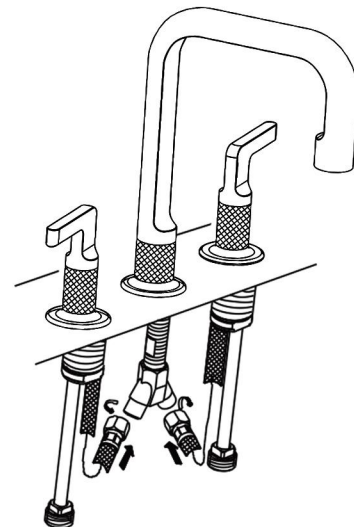
2. Remove the fixing nut and washer bolt under the handle. (Do not disassemble the handle)

3



3. Insert the handles into the installation holes on the counter. Lock the fixing washer bolt and fixing nut. Then install the water inlet hose into the main body.

4



4. Connect the water inlet hose of the handle to the three-way adapt of the water outlet.

CLEANING CARE

In order to keep the appearance of faucet clean, bright and good performance, please take care of the faucet as follows;

1. Rinse with water only and dry with soft cotton cloth;
2. Use mild liquid and colorless glass cleaner to remove surface dirt and scale film, or use polish without abrasive effect;
3. Do not use abrasive detergent, polish, emery cloth, paper towel or scraper, etc.;
4. Do not use acid cleaner, or cleaner and soap with insoluble gran etc.;
5. In the process of use, mud may accumulate in the bubbler and make the water flow show, The bubbler can be unscrewed, rinsed with water, and then installed back in place.

