

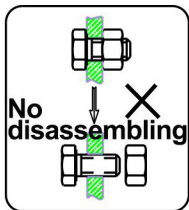


User's Manual

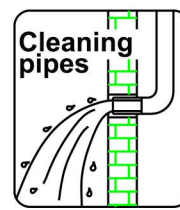


INSTALLATION STEPS

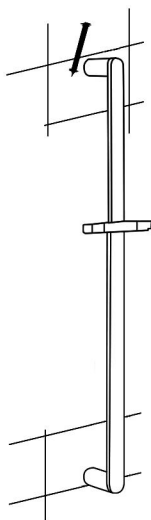
This product has been inspected and debugged by the factory to the best condition. Please do not disassemble and assemble it yourself.



Before installing the product, please be sure to remove sundries and sludge from the water pipe to prevent sundries from blocking the product.

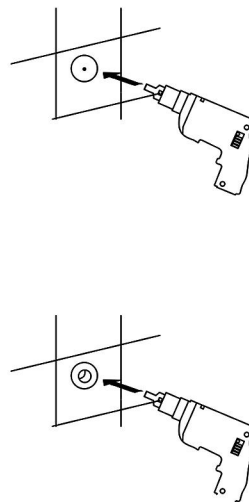


1



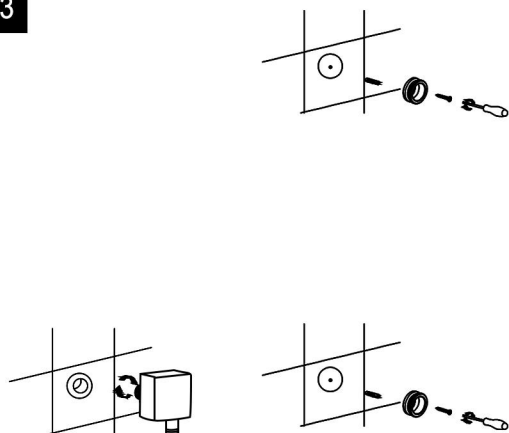
Fix the slide bar on the wall to be installed, use a pencil to draw the positions of 2 fixing seats.

2



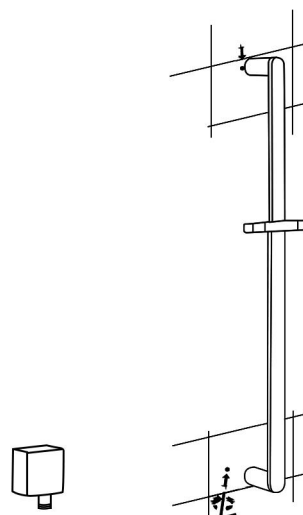
Take down the slide bar, use an electric drill to drill fixed holes according to the position.

3



Drive the screw pellets into the hole and tighten the screw with a screwdriver. Lock the fixing seat on the wall. screw the outlet seat into the outlet pipe and correct the direction.

4



Install the slide bar into the fixing seat on the wall, and fix the slide bar with a hexagonal screwdriver.

CLEANING CARE

In order to keep the appearance of product clean, bright and good performance, please take care of the product as follows;

1. Rinse with water only and dry with soft cotton cloth;
2. Use mild liquid and colorless glass cleaner to remove surface dirt and scale film, or use polish without abrasive effect;
3. Do not use abrasive detergent, polish, emery cloth, paper towel or scraper, etc;
4. Do not use acid cleaner, or cleaner and soap with insoluble gran etc;
5. In the process of use, mud may accumulate in the bubbler and make the water flow show, The bubbler can be unscrewed, rinsed with water, and then installed back in place.



Please feel free to contact us if you have any questions. We will help to solve the issue together with you. OUR EMAIL: services@rbrohant.com



Service Contact:
+1(801) 800-9309
services@rbrohant.com

Made in China