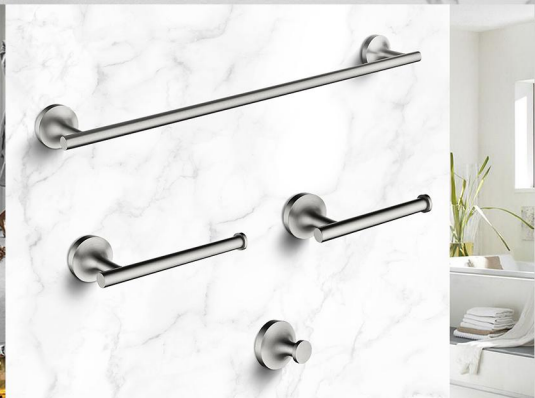
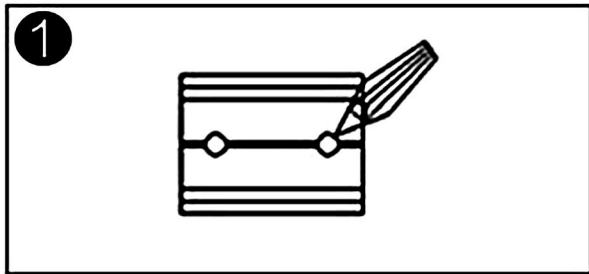




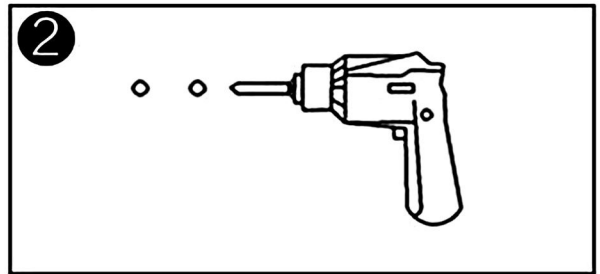
User's Manual



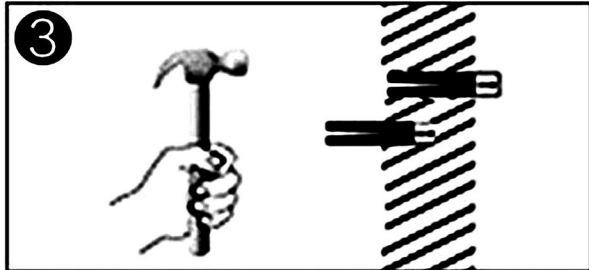
INSTALLATION STEPS



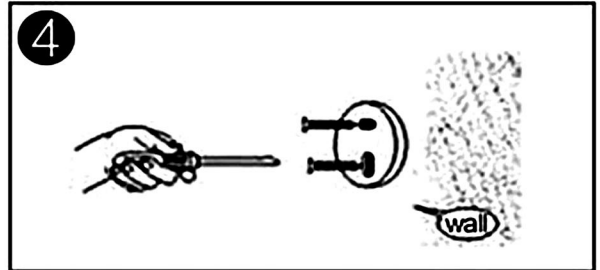
1. FIRST, MARK THE POSITION OF THE HOLE IN THE WALL



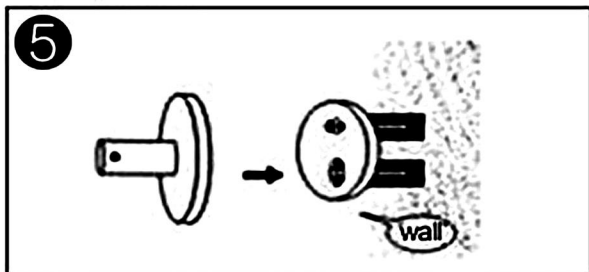
2. USE THE M6 BIT TO PUNCH HOLES IN THE MARKED POSITION



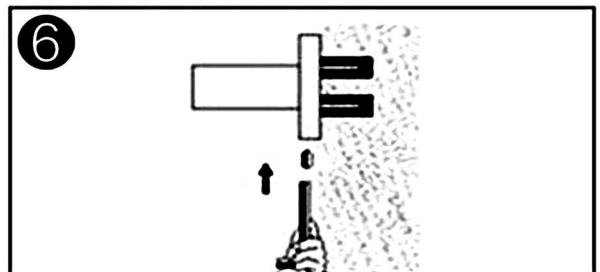
3. USE THE HAMMER TO PUSH THE PLASTIC EXPANSION PIPE INTO THE HOLE



4. TIGHTEN THE STAINLESS STEEL SCREWS WITH A SCREWDRIVER AND FIX THE GASKET



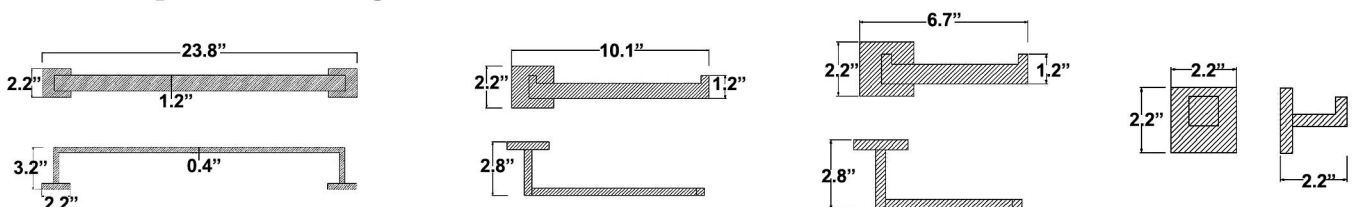
5. PLACE THE PRODUCT BASE IN THE GASKET POSITION



6. SCREW THE BASE POSITION WITH WRENCH OF THE DISTRIBUTION

NOTE:

- This product need to be installed on wood or cement wall, if installed on another wall , the function of the product will be affected.
- Before drilling, check whether there is power cable, communication cable or water pipe in the wall with electronic detector.
- Different wall material need to adopt different drill , rill the hole carefully.
- If you use a electric drill, please do not forget two points as follows: 1.please wear protective glasses.
2.Turn off the power after using the device.



CLEANING CARE

In order to keep the product surface beight, please keep offer or regularly to clean the product. Wash holder with clean water ,and wipe with soft cotton cloth.

Avold using cleaning power ,harsh cleaning chemicals ,brushes ,and cloth with coarse surface to prevent scrtching and corrosion.

Do not use acidic cleaning agents for washing the product as it may cause corrosion on the surfaceoffaucet in contact with harmful acidic agents.

Please feel free to contact us if you have any questions. We will help to solve the issue together with you. OUR EMAIL: services@rbrohant.com



Service Contact:
+1(801) 800-9309
services@rbrohant.com

Made in China