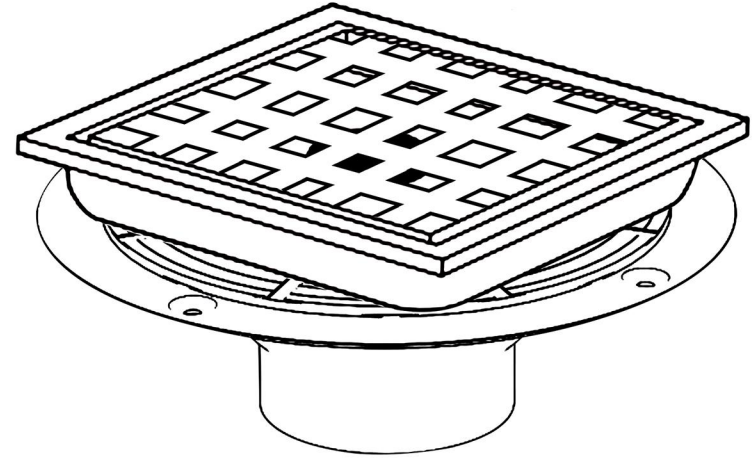




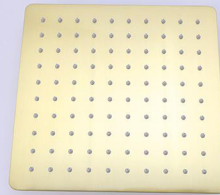
# User's Manual

## INSTALLATION INSTRUCTIONS

### Installation Manual



# RB001G



**IAPMO RESEARCH AND TESTING, INC.**  
5001 East Philadelphia Street, Ontario, California 91761-2816 - USA - 909-472-4100 - 909-472-4244 - www.iapmo.org

**ANSI** **IAPMO** **UPC**

**CERTIFICATE OF LISTING**

**UPC**

This certificate is not evidence of product listing. To verify listing status, visit the IAPMO R&T Product Listing Directory at [pdl.iapmo.org](http://pdl.iapmo.org)

Effective Date: December 2019 Rev. 2/24/2020 Void After: November 2024  
Product: Finishable Water Connectors File No. 1511  
Issue To: Roca Group Inc.,  
Rembrandt & Besselaar  
Industrial Drive,  
Tulane County,  
Ghana 31780, 08823880  
China

Identification: Products shall be marked with manufacturer's name or trademark, a statement "For use with water in accessible locations only." The products shall also bear the UPC® certification mark. Markings shall be by means of etching a permanent mark on the product, a label on the product or a tag attached to the product.

Characteristics: Finishable water connectors manufactured in various sizes, lengths and metal and fittings for hot or cold water applications that consist of an inner tube, which may or may not have an outer heated cover. Connectors are to be installed for use in accessible locations only. Do be installed in accordance with the manufacturer's instruction, and the latest edition of the Uniform Plumbing Code and National Plumbing Code of Canada.

Products listed in this certificate have been tested by an IAPMO R&T recognized laboratory. This recognition has been granted based upon the following information:

*Tom Collins* *Ron Cheng*  
IAPMO Research and Testing, Inc. IAPMO Research and Testing, Inc.

The listing process is based upon the test results obtained at the IAPMO R&T test facility. Any change in design, manufacturing process, material or other factors affecting the safety of the product, or any other factor that may affect the safety of the product, shall be reported to the IAPMO R&T test facility. The listing process is based upon the test results obtained at the IAPMO R&T test facility. Any change in design, manufacturing process, material or other factors affecting the safety of the product, or any other factor that may affect the safety of the product, shall be reported to the IAPMO R&T test facility. The listing process is based upon the test results obtained at the IAPMO R&T test facility. Any change in design, manufacturing process, material or other factors affecting the safety of the product, or any other factor that may affect the safety of the product, shall be reported to the IAPMO R&T test facility.

**IAPMO RESEARCH AND TESTING, INC.**  
5001 East Philadelphia Street, Ontario, California 91761-2816 - USA - 909-472-4100 - 909-472-4244 - www.iapmo.org

**ANSI** **IAPMO** **UPC**

**CERTIFICATE OF LISTING**

**UPC**

This certificate is not evidence of product listing. To verify listing status, visit the IAPMO R&T Product Listing Directory at [pdl.iapmo.org](http://pdl.iapmo.org)

Effective Date: November 2019 Void After: November 2024  
Product: Finishing Fixture Fittings File No. 15133  
Issue To: Aqua Utility Co., Ltd.  
1200-1200 26th Street,  
International Offices,  
Baltimore City, 21200  
Pakistan,  
China

Identification: Finishing fixture fittings complying with this standard shall be marked with the manufacturer's corporate name, trademark, or other mark or, in the case of private labeling, the name, trademark or other mark of the customer for whom the fitting was manufactured. The marking shall be accomplished by use of a permanent mark or by placing a permanent label on the product. Markings on finishing fixture fittings shall be visible after installation.

Single-handle, single-control, and automatic compensating mixing bath and shower valves shall have identifiable temperature control settings in which the settings are indicated by words "Hot", "Warm", "Hot", "Hot", "Hot", or equivalent.

Products shall be marked with the manufacturer's name, trademark, or other mark as well as the model number or, in the case of private

*Tom Collins* *Ron Cheng*  
IAPMO Research and Testing, Inc. IAPMO Research and Testing, Inc.

The listing process is based upon the test results obtained at the IAPMO R&T test facility. Any change in design, manufacturing process, material or other factors affecting the safety of the product, or any other factor that may affect the safety of the product, shall be reported to the IAPMO R&T test facility. The listing process is based upon the test results obtained at the IAPMO R&T test facility. Any change in design, manufacturing process, material or other factors affecting the safety of the product, or any other factor that may affect the safety of the product, shall be reported to the IAPMO R&T test facility.

**IAPMO RESEARCH AND TESTING, INC.**  
5001 East Philadelphia Street, Ontario, California 91761-2816 - USA - 909-472-4100 - 909-472-4244 - www.iapmo.org

**ANSI** **IAPMO** **UPC**

**CERTIFICATE OF LISTING**

**UPC**

This certificate is not evidence of product listing. To verify listing status, visit the IAPMO R&T Product Listing Directory at [pdl.iapmo.org](http://pdl.iapmo.org)

Effective Date: March 2019 Void After: March 2024  
Product: Finishing Fixture Fittings - Components File No. MC-9751  
Issue To: Finishing Fixture Technology Co., Ltd.,  
Fujian Date, Chongqing,  
People's Republic of China

Identification: Each fitting component shall bear permanent legible markings to identify the manufacturer. This marking shall be the trade name, trademark, or other mark known to identify the manufacturer. The product shall also bear all other markings required by the standard. The marking shall be applied so as to be visible after installation. The product or packaging shall also bear the UPC® certification mark along with the name "IAPMO R&T".

Characteristics: Finishing fixture fittings components to be installed in accordance with the manufacturer's instructions and the requirements of the latest edition of the Uniform Plumbing Code.

Products listed on this certificate have been tested by an IAPMO R&T recognized laboratory. This recognition has been granted based upon the laboratory's compliance to the applicable requirements of ISO/IEC 17025.

Products are in compliance with the following standards:  
Uniform Plumbing Code (UPC)

*Tom Collins* *Ron Cheng*  
IAPMO Research and Testing, Inc. IAPMO Research and Testing, Inc.

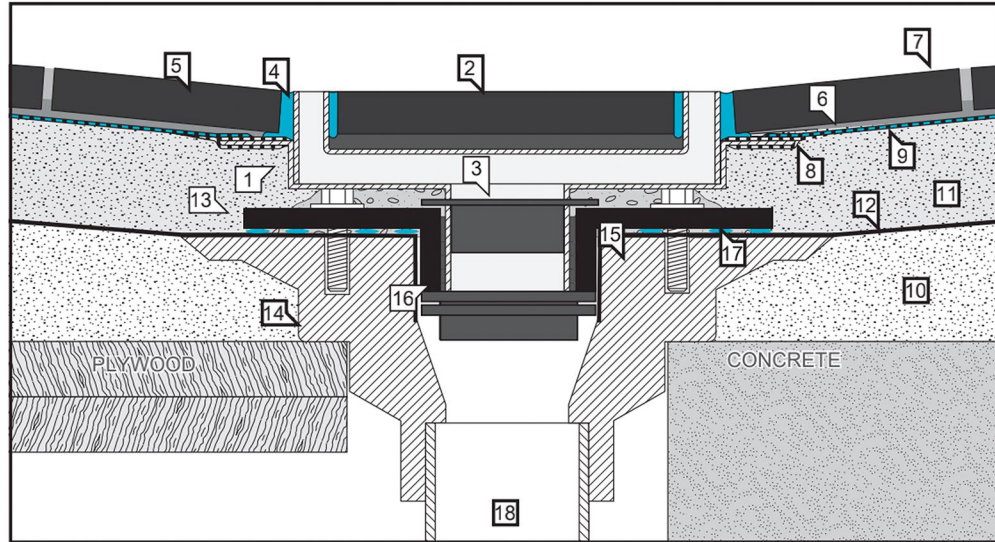
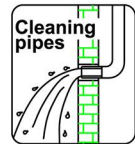
The listing process is based upon the test results obtained at the IAPMO R&T test facility. Any change in design, manufacturing process, material or other factors affecting the safety of the product, or any other factor that may affect the safety of the product, shall be reported to the IAPMO R&T test facility. The listing process is based upon the test results obtained at the IAPMO R&T test facility. Any change in design, manufacturing process, material or other factors affecting the safety of the product, or any other factor that may affect the safety of the product, shall be reported to the IAPMO R&T test facility.

# BEFORE INSTALLATION

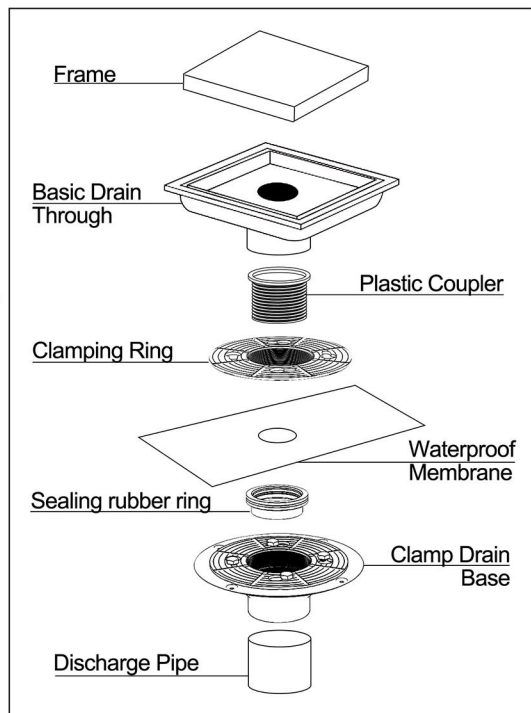
This product has been inspected and debugged by the factory to the best condition. Please do not disassemble and assemble it yourself.



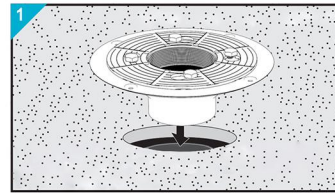
Before installing the product, please be sure to remove sundries and sludge from the water pipe to prevent sundries from blocking the product.



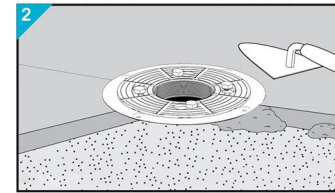
- ① Basic Drain Trough
- ② Grating (tiled)
- ③ Strainer
- ④ Elastic sealant - Silicone
- ⑤ Tiles
- ⑥ Thin set tile adhesive
- ⑦ Grout
- ⑧ Pre-assembled waterproofing membrane
- ⑨ Thin-set sheet membrane (entire floor!)
- ⑩ Sloped mortar bed - first layer
- ⑪ Sloped mortar bed - second layer
- ⑫ Pan liner / Moisture resistant material
- ⑬ Pea Gravel
- ⑭ 2\"/>



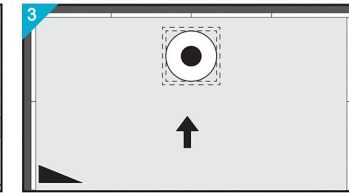
# INSTALLATION STEPS



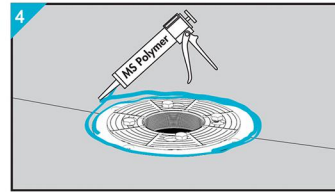
1. Install the clamp drain base to ensure that the drain port of the base is connected to the drain pipe tightly.



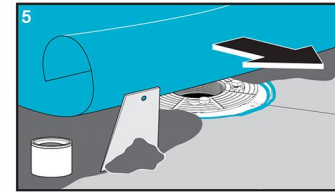
2. Sloped mortar bed, ensure that the drain port of the base is connected to the drain pipe tightly.



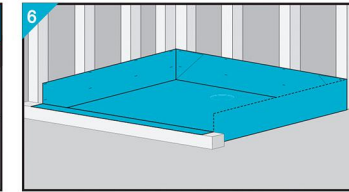
3. Adjust and fix in place.



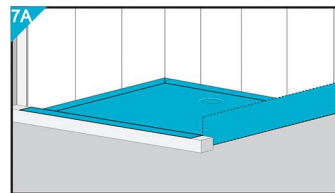
4. Put sealant around.



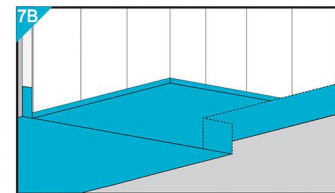
5. Cover the mortar bed with a waterproof membrane.



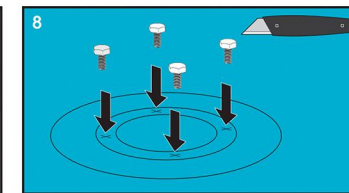
6. Cover the entire floor with waterproof membrane.



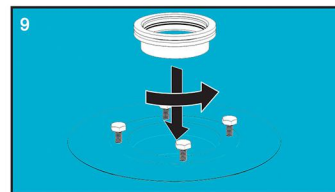
7A. Plus cement retaining plate.



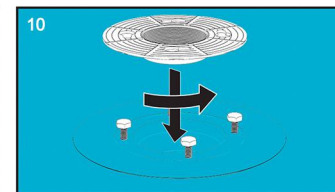
7B. Or choose a shower with a hood.



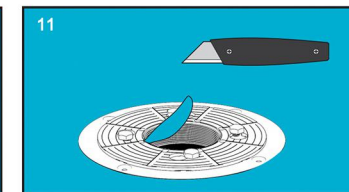
8. Screw 4 fixing screws on the base.



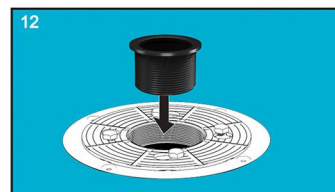
9. Add sealing rubber ring.



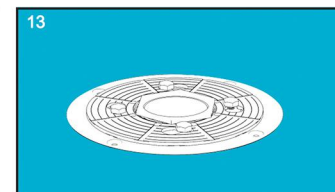
10. Put the clamping ring into the screw, turn and lock.



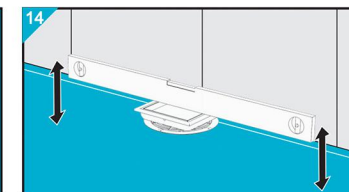
11. Slash the waterproof membrane with a knife at the drain.



12. Fit the plastic coupler .

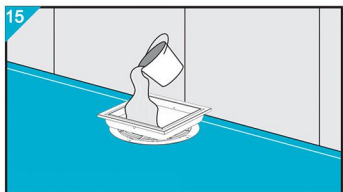


13. Tighten it to the right position.

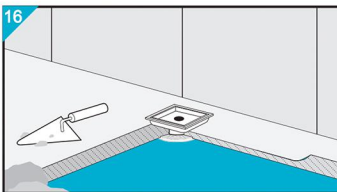


14. Put the floor drain into the clamp drain base and adjust it with a spirit level.

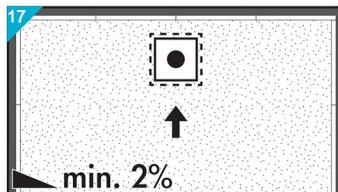
# INSTALLATION STEPS



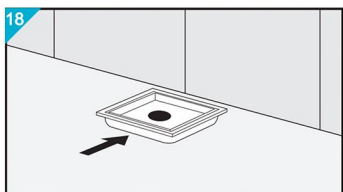
15. Test water tightness



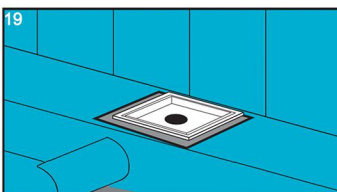
16. Cement.



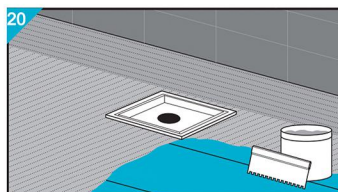
17. Leave a slope of not less than 2 degrees on the ground against the floor drain.



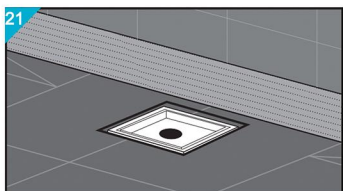
18. Sloped mortar bed



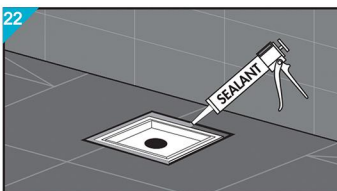
19. Cover the mortar bed with a waterproof membrane.



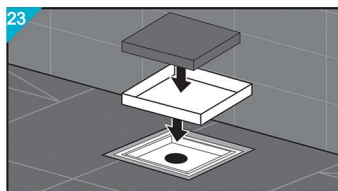
20. Apply tile adhesive.



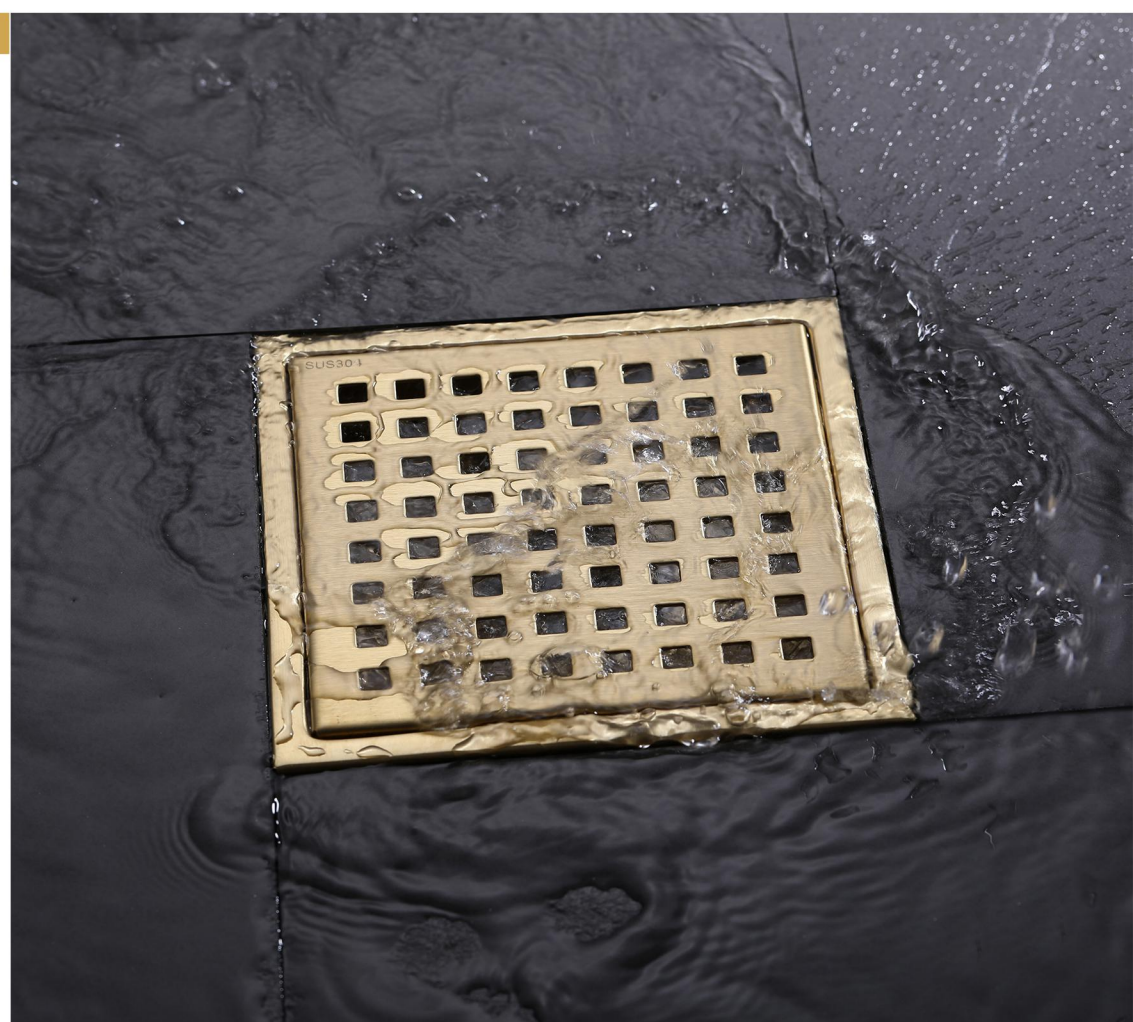
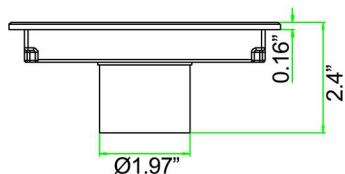
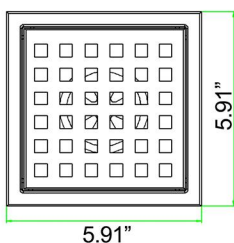
21. Install tiles.



22. Put on the sealant.



23. Cover the surface with tiles and install it to the main body of the floor drain.



## CLEANING CARE

In order to keep the appearance of product clean, bright and good performance, please take care of the product as follows;

1. Rinse with water only and dry with soft cotton cloth;
2. Use mild liquid and colorless glass cleaner to remove surface dirt and scale film, or use polish without abrasive effect;
3. Do not use abrasive detergent, polish, emery cloth, paper towel or scraper, etc;
4. Do not use acid cleaner, or cleaner and soap with insoluble gran etc;
5. In the process of use, mud may accumulate in the bubbler and make the water flow show, The bubbler can be unscrewed, rinsed with water, and then installed back in place.



Please feel free to contact us if you have any questions. We will help to solve the issue together with you. OUR EMAIL: [services@rbrohant.com](mailto:services@rbrohant.com)



Service Contact:

**+1(801) 800-9309**  
[services@rbrohant.com](mailto:services@rbrohant.com)

Made in China