



MILK FROTHER

USER MANUAL

WWW.KOIOSSHOP.COM

CONTENTS

CUSTOMER SERVICE	01
SAFETY PRECAUTIONS	02
PRODUCT FEATURES	04
SPECIFICATIONS	05
PRODUCT OVERVIEW	06
USAGE	08
WARRANTY	10

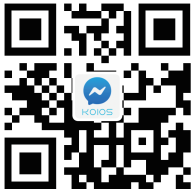
01 CUSTOMER SERVICE

CUSTOMER SERVICE

Our customer service team is standing by to assist you if you have any questions or concerns.



Please scan QR-code to start chatting instantly:



Scan QR-code & Start Chatting



1-855-888-2111



support@koiosshop.com



www.koiosshop.com

Please read the following instructions carefully before using the KOIOS milk frother for the first time and keep it for future reference. Basic safety precautions should always be followed.

1. Do not touch the product if your hands are moist or wet.
2. To reduce the risk of electrical shock, do not immerse the cord, plug, or other parts of the appliance in water or other liquids.
3. Close supervision is necessary when the appliance is in use. Keep the appliance away from children.
4. Unplug from the outlet when not in use and before cleaning. Allow the appliance to cool down before cleaning.
5. Do not operate the appliance when the power cord or plug is damaged. If the appliance malfunctions, dropped, or damaged in any manner, contact KOIOS customer service.
6. Unauthorized use or the use of attachments that do not belong to this product may cause fire, electrical shock or personal injury, or damage to your appliance.

03 SAFETY PRECAUTIONS

7. This appliance is intended for household use only.
8. Do not let the power cord hang over the edge of a table or counter, or touch any hot surface.
9. Do not place the appliance near a gas outlet, electric burner, or heated oven.
10. Do not operate the unit without liquid.
11. Always operate the appliance with the lid in place.
12. Some parts of the unit are hot when the appliance is in use. Please use the handle to move or carry the jug housing.
13. Ensure the milk frother is operated on a clean, stable, and level surface. Do not operate on a sink, draining board, or polished wooden surfaces.
14. Never leave unattended.

Thank you for purchasing KOIOS Milk Frother. This instruction manual contains important information about safety and usage. Use the product as described and keep this manual for future reference.

Make your favorite cappuccino with thick, rich frothed milk, latte macchiato, and hot chocolate in your own kitchen!

EASY TO USE:

Toggle through the 4 preset programs on the control panel: Heating Milk, Hot Airy Foam, Hot Dense Foam, Cold Milk Froth.

SAVE YOUR TIME:

Choose the desired function and push the corresponding button on the control panel. The heating indicator lights up, single "beep" sound indicates the milk frother starts operating. When the process is done, you will hear a triple "beep" sound.

05 SPECIFICATIONS

Model No: SMF-500C

Rated Voltage: 120V/60Hz

Power consumption: 500W

Max Level for Heating: 300ml

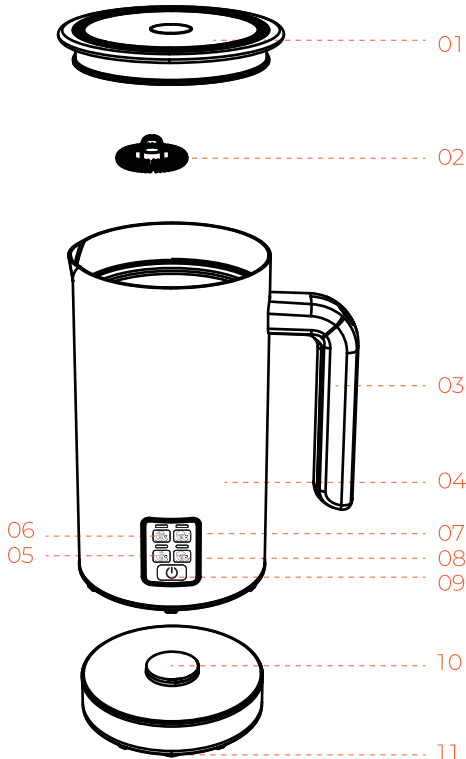
Max Level for Frothing: 150ml

Min Liquid Level: 70ml

ROTATIONAL SPEED

	Hot Airy Foam	1700~2900r/min
	Hot Dense Foam	3000~4200r/min
	Heating Milk	400~850r/min
	Cold Milk Froth	3000~4200r/min

PRODUCT OVERVIEW 06



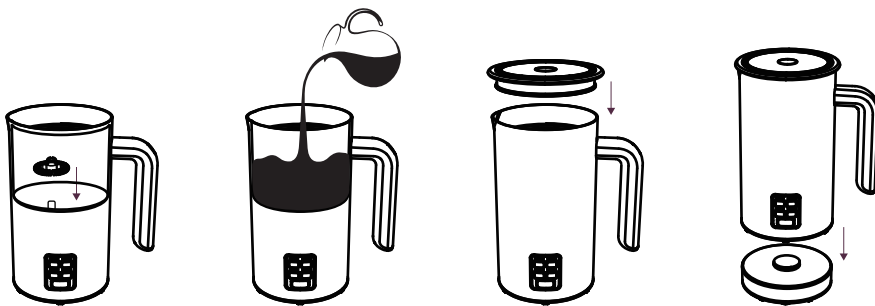
01	Lid
02	Whisk for frothing
03	Handle
04	Jug housing
05	Heating Milk Mode
06	Hot Airy Foam Mode
07	Hot Dense Foam Mode
08	Cold Milk Froth Mode
09	On/Off button
10	Base
11	Power cable

07 USAGE

NOTE:

It is recommended to use whole milk, as it will be easier to form a delicate and dense milk froth.


1. Insert whisk up to the stop on the drive shaft inside the canister.
2. Take the canister off the base and pour milk up to the min marking inside the canister, the volume of the milk increases during the frothing process. Only pour milk up to the lower Max marking in order to prevent the milk froth from overflowing.
3. Place the lid onto the canister.
4. Place the canister onto the base.



FROTHING & HEATING MILK:


1. HEATING MILK

Press the "  " button to turn on the unit.

Press the "  " button, LED light turns red to show that the unit is in operation. As the milk is hot, the LED light will start to flash indicating the process has finished. The milk frother switches off automatically.

2. HOT AIRY FOAM

Press the "  " button to turn on the unit.

Press the "  " button, LED light turns red to show that the unit starts the frothing process. As the milk is ready, the LED light will start to flash indicating the process has finished. The milk frother switches off automatically.

3. HOT DENSE FOAM

Press the "  " button to turn on the unit.


Press the "  " button, LED light turns red to show that the unit

09 USAGE

starts the frothing process to create a rich, dense style of microfoam. As the milk is ready, the LED light will start to flash indicating the process has finished. The milk frother switches off automatically.

4. COLD MILK FROTH

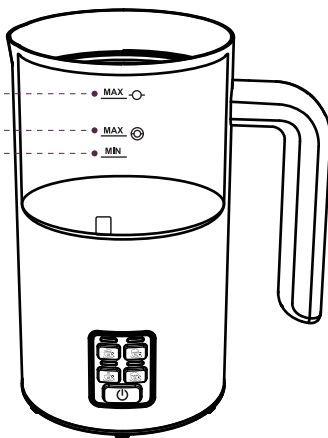
Press the "  " button to turn on the unit.

Press the "  " button, LED light turns red to show that the unit starts the frothing process. As the milk is ready, the LED light will start to flash indicating the process has finished. The milk frother switches off automatically.

Max Level for Heating

Max Level for Frothing

Min Liquid Level




WARRANTY

- KOIOS-branded products are covered by the KOIOS 12-month warranty from the original date of purchase. If you want to extend your warranty for one more year, please do not hesitate to contact us.
- Become a KOIOS member and get access to exclusive benefits, such as updates about the latest KOIOS products.

REGISTER ONLINE NOW!

warranty.koiosshop.com



 1-855-888-2111

 support@koiosshop.com

 www.koiosshop.com

KOIOS



Made in China