

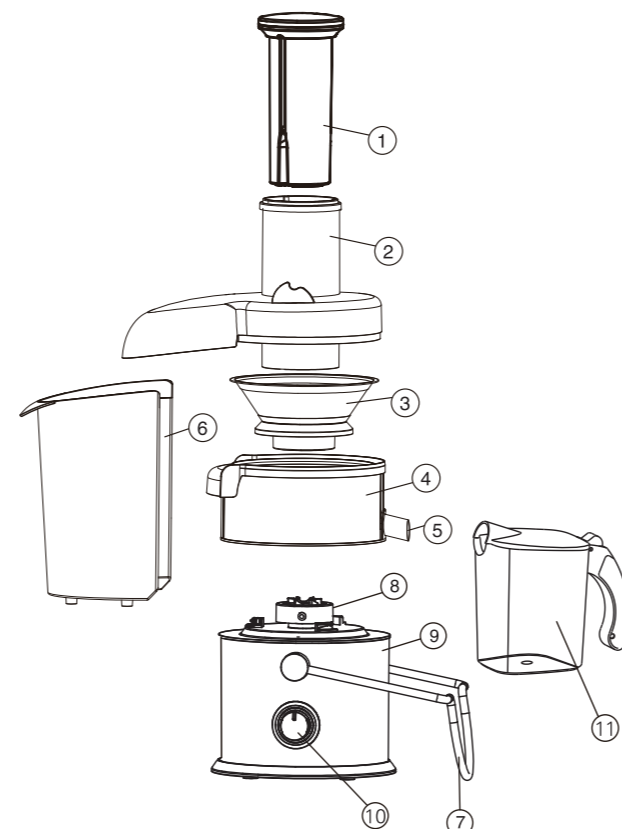
KOIOS\_JE-70\_说明书  
 材质: 200G双铜,黑白印刷  
 工艺: 装订  
 尺寸: 100\*230mm

**CENTRIFUGAL  
 JUICER  
 INSTRUCTION  
 MANUAL**

www.koiosshop.com  
 support@koiosshop.com  
 1-855-888-2111  
 m.me/KoiosShop

KOIOS

GENERAL PARTS DESCRIPTION



- 1. Pusher
- 2. Feeder Tube and Lid
- 3. Filter
- 4. Juice Collector
- 5. Juice Spout
- 6. Pulp Container
- 7. Locking Arm
- 8. Drive Shaft
- 9. Motor Unit
- 10. Control Knob
- 11. Fruit juice cup

CONTACT US 1

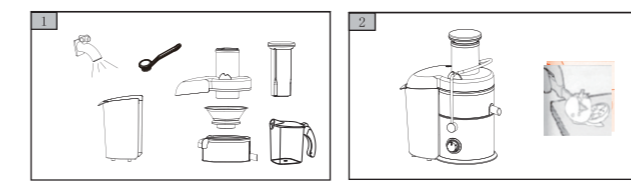
IMPORTANT SAFEGUARDS

- Before first connecting the appliance to power, check that voltage indicated on the rating label corresponds to the mains voltage in your home.
- For home use only. Do not use for commercial or industrial purposes. Do not use this appliance for any purposes other than described in this instruction manual.
- Do not use outdoors.
- Do not disassemble the juicer when it is connected to a power supply. Always unplug the appliance from the power supply before cleaning and when not in use.
- To prevent risk of electric shock and fire, do not immerse the appliance in water or any other liquids. If this happens, unplug the appliance immediately and have the appliance checked by a suitably qualified person.
- This appliance is not intended for use by persons (including children) with reduced physical, sensory or mental capabilities, or lack of experience and knowledge, unless they have been given supervision or instruction concerning use of the appliances by a person responsible for their safety. Children should be supervised to ensure that they do not play with the appliance.
- Do not leave the appliance switched on when not in use.
- Do not use other attachments than those supplied.
- Do not operate if the appliance malfunctions or if the cord is damaged.
- Do not attempt to repair, adjust or replace parts on the appliance yourself.
- Have the malfunctioning appliance checked by a suitably qualified person at an appliance repair center.
- Keep the cord away from sharp edges and hot surfaces.
- Do not pull, twist, or wrap the power cord around the appliance.
- Do not place the appliance near gas or electric oven or store at heated surface.
- Avoid contact with moving parts.
- The grating filter is very sharp, so handle it with care.
- Always make sure the cover and the safety lock is fastened correctly before switching on. The unit is designed to shut off automatically if locks are not fastened securely in place.
- Do not push food into the appliance by fingers while it is in operation. If food becomes lodged in feeder tube, use the pusher to push it down. If this doesn't work, turn the motor off, unplug the unit, and then disassemble juice extractor to remove remaining food.
- Do not run the appliance continuously for longer than 2 minutes.
- Switch off the appliance and let it cool down for at least one (1) minute to prevent possible damage to the motor.
- For cleaning, make sure that the appliance is unplugged and all moving parts within the appliance have completely stopped moving before disassembling and cleaning.
- Be sure to switch off the unit after each use.
- Do not overload the appliance with produce.
- The manufacturer reserves the right to introduce minor changes to the product design without prior notice, unless such changes significantly influence the product's safety, performance and functions.

2 GENERAL PARTS DESCRIPTION

PREPARING FOR USE

1. After unpacking the unit and before using it, check and make sure all mechanical parts of the unit and all attachments are not damaged.
2. Wash and dry all parts of the appliance that will come into contact with food (figure 1). Clean the body of unit with a soft dry cloth.
3. Practice assembling and dismantling the unit a few times before making juice.
4. Wash fruit and/or vegetables and cut them into pieces that fit into the feeding tube (figure 2).



CLEANING AND CARE

Switch off the appliance and unplug before cleaning.  
 The appliance is easier to clean if you clean it immediately after use.  
 Do not use abrasive cleaning agents, scourers, acetone or alcohol etc. to clean the appliance.  
 All detachable parts are dishwasher-safe. Clean these parts with a cleaning brush in warm water with some washing-up liquid and rinse them under the tap.  
 Wipe off the motor unit with a soft dry cloth, and keep it away from water. The blade is sharp, take special care when cleaning it and do not touch blade edges.  
 Check the filter basket regularly for signs of damage, do not use it if the filter basket is damaged.  
 Never immerse the motor unit in water nor rinse it under a tap.

STORAGE

Before storing, make sure the appliance is unplugged, and all moving parts are completely stopped.  
 Air dry and wipe clean all the detachable parts.  
 Assemble the clean parts and accessories into a complete appliance by following the steps in the ASSEMBLE chapter of this manual.  
 Store the clean, assembled appliance in a dry, flat place.

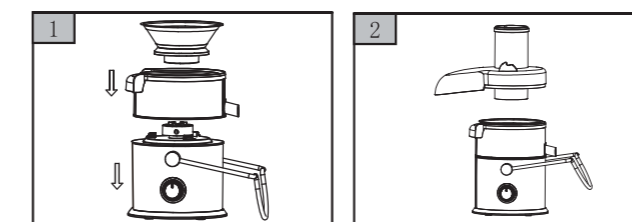
SPECIFICATION

Voltage: AC 120V Frequency: 60Hz

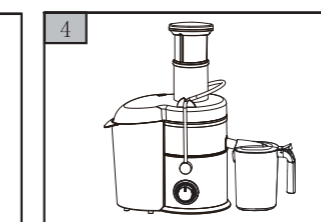
IMPORTANT SAFEGUARDS 3

USING JUICE EXTRACTOR

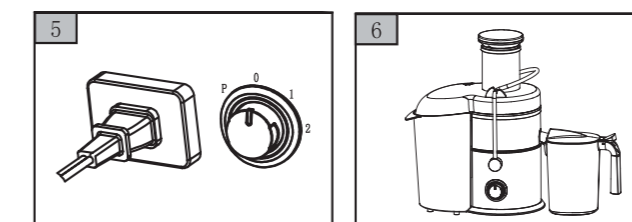
The appliance will only function if all parts have been properly assembled and the lid has been properly locked in place with the locking arm.



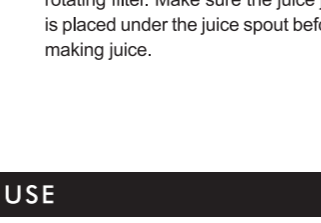
Place the juice collector onto the motor unit, and put the filter into the juice collector. Make sure the filter is fitted securely onto the drive shaft.



Place the lid on the unit, and lift the locking arm upwards to lock in position on either side of the lid.



Place the pulp container under the appliance by tilting it forward slightly.



Slide the pusher into the feeding tube by aligning the groove in the pusher with the small protrusion on the inside of the feeding tube.



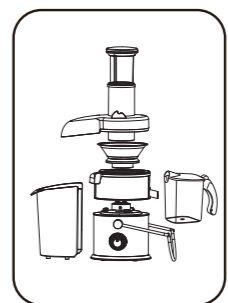
Switch on by turning the control knob to select setting 1 (low speed), 2 (normal speed) or P (pulse) to start.

4 PREPARING FOR USE

HOW TO DISMANTLE AND ASSEMBLE

DISMANTLING THE JUICER:

- Unplug the appliance from the power supply.
- Release the locking arm.
- Remove the pulp container, transparent lid and pusher. Pull the filter basket upwards and juice collector separately.



ASSEMBLING THE JUICER:

- Place the juice collector on the motor unit and insert filter.
- Mount the transparent lid onto the juice collector, and fasten the locking arm upwards until it clicks into place.
- Place the pulp container under the pulp spout and put the juice jug under the juice spout.
- Plug in.

OPERATING INSTRUCTIONS:

- This appliances is equipped with a safety lock system. If the transparent lid is not correctly placed or the locking arm is unfastened, the appliance will not function.
- Before starting, make sure the appliance is switched off, and the transparent lid and locking arm are fastened properly.
- Wash fruits and vegetables thoroughly and cut fruits into small pieces so they can fit into the feeder tube. Remove stones, pits, seeds or peel from fruits such as prunes, apricots, cherries, oranges, lemons, melons etc.
- Plug in, switch on the appliance and choose the desired speed according to the fruits or vegetable used.
- Insert the prepared fruits and vegetables into the feeder tube and press the pusher down gently.
- NEVER USE FINGERS OR OTHER OBJECTS AS A PUSHING DEVICE.
- When the pulp container or juice jug is full, switch it off and empty the container/jug before continuing the process.

ATTENTION:

- Do not run the juice extractor continuously for longer than 2 minutes. Should more time be required, switch off the appliance to allow it to cool down before continuing.

CAUTION:

- Remove stones, pits, seeds or peel from fruits such as prunes, apricots, cherries, oranges, lemons, melons etc., or any fruits with a thick seedcase or inedible seedcase.
- Unsuitable fruits and vegetables to use are those that do not have a watery juice, such as bananas, mangos, papayas etc. As well as any hard fruits or vegetables such as coconuts.
- When the juicing process is completed, switch off appliance and unplug the unit.

USING JUICE EXTRACTOR 5

www.koiosshop.com  
 support@koiosshop.com  
 1-855-888-2111  
 m.me/KoiosShop

