







MULTIFUNCTIONAL BLENDER

USER MANUAL

WWW.KOIOSSHOP.COM

CUSTOMER SERVICE

Our customer service team is always ready to assist you if you have any issues or concerns.

-  www.koiosshop.com
-  support@koiosshop.com
-  1-855-888-2111
-  m.me/KoiosShop

CONTENTS

IMPORTANT SAFEGUARDS	01
PRODUCT OVERVIEW	03
USER GUIDE	04
TROUBLESHOOTING	06
CLEANING AND MAINTENANCE	07

01 IMPORTANT SAFEGUARDS

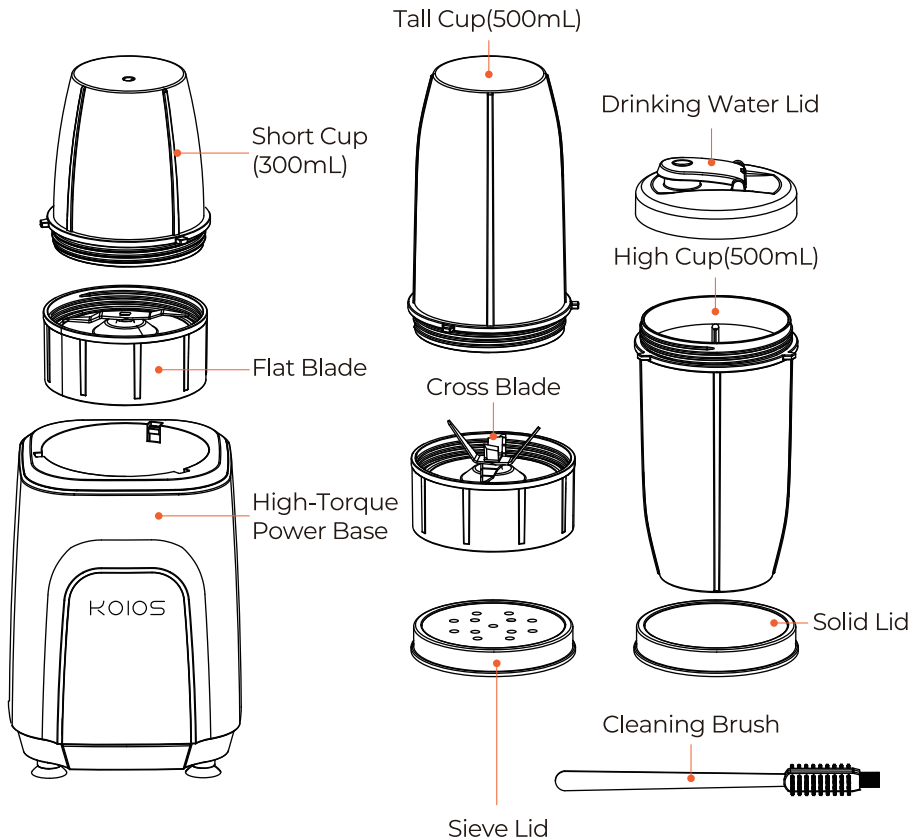
To avoid electric shock, fire, or injury, please read the user manual carefully before using the appliance and keep it for future reference.

1. This appliance can be used by children aged from 8 years and above and persons.
2. Do not operate any appliance with damaged cord or plug, or after appliance has been dropped or damaged in any way. Return the appliance to the nearest authorized service facility for examination, repair or electrical or mechanical adjustment.
3. Never immerse the motor unit or supply cord in water nor rinse it under the tap.
4. Make sure motor has completely stopped before removing cover.
5. Make sure the cover is securely locked into position before operating.
6. Unauthorized use or the use of attachments that do not belong to this product may cause fire, electrical shock or personal injury, or damage to your appliance.
7. This appliance is intended for home use only.
8. This appliance shall not be used by children. Keep the appliance and its cord out of reach of children.

IMPORTANT SAFEGUARDS 02

9. If the supply cord is damaged, it must be replaced by the manufacturer, its service agent or similarly qualified persons in order to avoid a hazard.
10. Always unplug the appliance from the outlet when it is not in use, before putting on or taking off parts, before removing food, and before cleaning.
11. Take care while handling the sharp cutting blades or emptying the bowl in order to avoid injury.
12. This product is strictly prohibited for no-load or overload operating.
13. Keep hands and utensils out of container while blending to reduce the risk of severe injury to persons or damage to the blender.
14. To reduce the risk of injury, never place flat/cross blade base on high-torque power base without cap properly attached.

03 PRODUCT OVERVIEW

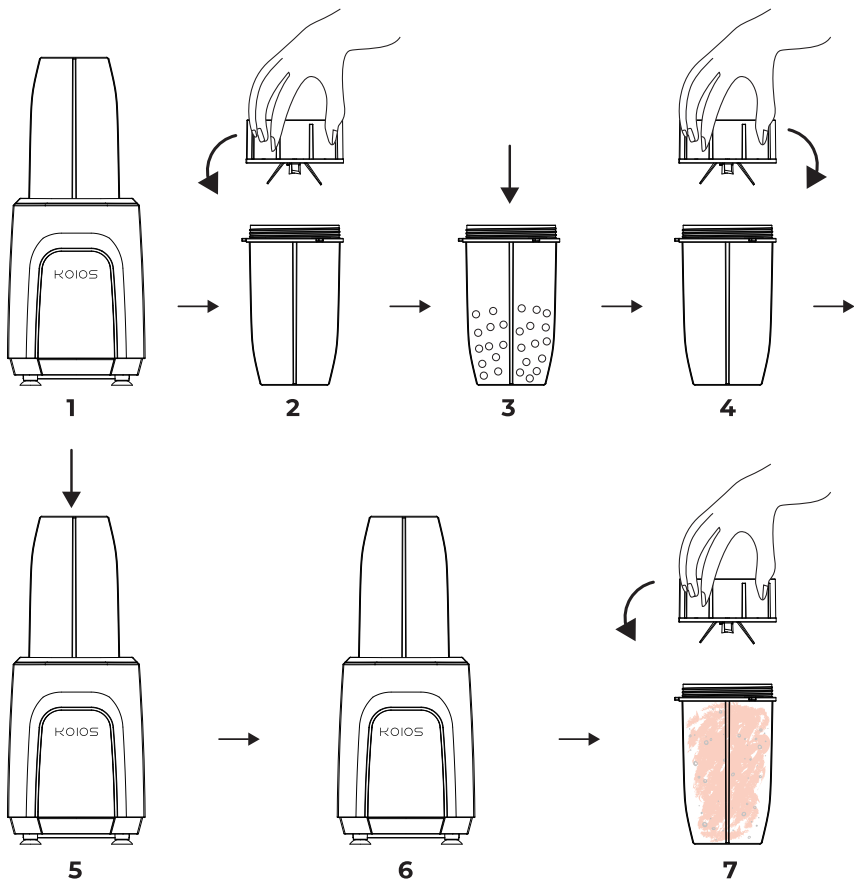


KOIOS personal blender comes with a handy sieve top that is used to sift dry ingredients, such as cinnamon, nutmeg, ground coffee beans, cocoa powder, etc.

FOOD	BLADE TYPE	CUP TYPE	TIME
Fruits and Vegetables	Cross Blade	Tall Cup	60 seconds with the recommended max 400g loaded capacity with water
Coffee beans or nut	Flat Blade	Short Cup	30 seconds with the recommended max 100g loaded capacity

1. Remove the blade/cup assembly from the base. Twist the flat/cross blade base clockwise to unseal the blade base and the cup.
2. Load the ingredients into the short or tall cup. Be careful not to exceed the max level mark.
3. Twist on the blade base rotating counterclockwise until the blade and cup have a tight seal.
4. Place the blade/cup assembly on the base upside down, line up the unit's three grooves. Press down the mixing cup with your hand to turn it on.
5. As long as you're pressing the mixing cup down, the unit is operating.
6. Release the hand pushing the mixing cup after the machine has been running for 1 minute to stop the food from mixing. It is advised to press multiple times occasionally until the food is thoroughly smashed when stirring hard food/ingredients such as ice cubes;
7. Take out the blade/cup assembly. Twist the flat/cross blade base clockwise to unseal the blade base and the cup.

05 USER GUIDE



1. The appliance doesn't work.

Check if the power cord is plugged into the outlet properly.

2. Can I blend hot foods?

No. NEVER blend hot foods in a blender. Cool the food to a temperature that is lower than 60°C (140°F).

3. My KOIOS blender smells when I use it.

It is normal for a new product to produce an unusual smell when it is used for the first time. It stops after you have used the appliance several times.

If an unusual smell appears after the usage for a long time, turn the appliance off and let it cool down for 60 minutes.

4. Blender stops while blending.

Unplug the power cord, take out the cup and try to:

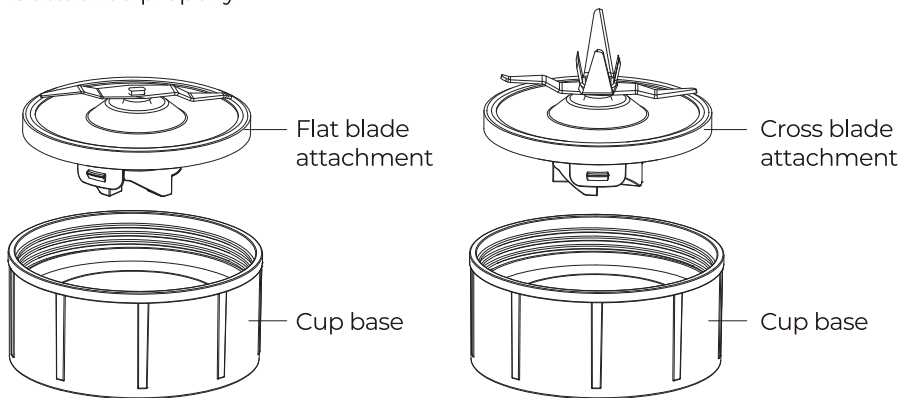
- a.Shake the cup;
- b.Reduce the loaded capacity.

5. How to crush ice cubes?

1. Don't put too many ice cubes at a time to prevent the blade from jamming.
2. Don't blend continuously for more than 20 seconds.
3. It is recommended to press down the cup intermittently several times in quick, two-second bursts until the ice cubes are crushed completely.

07 CLEANING AND MAINTENANCE

1. Remove the cross/flat blade attachment from the cross/flat blade base by pushing the blade gear.
2. Remove the gasket ring.
3. Add dishwashing liquid. Clean the gasket ring and the cross/flat blade attachment with the small brush to loosen debris, then rinse with water.
4. Dry well in a cool place.
5. Assemble the cross/flat blade attachment. Please ensure the gasket ring is attached properly.



CLEANING AND MAINTENANCE 08

1. UNPLUG the appliance from the power source when it is not in use.
2. Please store the appliance in a dry, well-ventilated place when it is not in use for a long time.
3. You can clean the accessories under running water.
4. Clean the blender with a dry cloth. To protect against the risk of electrical shock, never immerse the motor base in water or place it under running water.

DISPOSAL

The appliance should not be disposed off via the household bin collection. Disposal of the appliance should be carried out in accordance with the national regulations. If electrical appliances are disposed of in landfills or dumps, hazardous substances can leak into the groundwater and get into the food chain, damaging your health and well-being.

When replacing old appliances with new ones, the retailer is legally obligated to take back your old appliance for disposal.



KOIOS

-  www.koiosshop.com
-  support@koiosshop.com
-  1-855-888-2111
-  m.me/KoiosShop



Made in China