

## ColorBand Prestained Protein Marker Broad Range 10 kDa -180 kDa

Cat#: 8011051/801105X

### [Product Composition]

Product Name	Cat No.	Specification
ColorBand Prestained Protein Marker Broad Range 10 kDa -180 kDa	8011051	250 $\mu$ L/Kit
	801105X	250 $\mu$ L*5/Kit

### [Product Description]

The product is a prestained protein molecular weight standard in three colors. It contains 10 standard proteins with a known molecular weight range of 10~180 kDa (10 kDa, 17 kDa, 25 kDa, 35 kDa, 45 kDa, 55 kDa, 70 kDa, 100 kDa, 130 kDa, 180 kDa). After SDS-PAGE or Western Blot, 10 clear colored protein bands can be observed, of which 10 kDa is a green band, 70 kDa is a red band, and the remaining 8 are blue bands.

The product is a ready-to-use liquid that does not require heating, dilution or adding reducing agents before loading sample. It can be loaded directly for SDS-PAGE.

The concentration of each protein band in the product is approximately 0.1~0.4 mg/mL.

### [Storage buffer]

20 mM Tris-H<sub>3</sub>PO<sub>4</sub> (pH 7.5, 25°C), 2% (w/v) SDS, 0.2 mM DTT, 3.6 M Murea, 15%(v/v) glycerin.

### [Storage and Transportation]

Store at 2°C-8°C. Valid for 3 months.

Store at -25°C~-15°C. Valid for 24 months.

Avoid repeated freezing and thawing.

Blue ice transport.

### [Instruction]

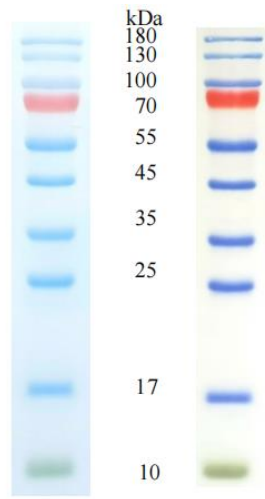
1. This product is a ready-to-use liquid. Take it out of the refrigerator and leave it stationarily at room temperature for a few minutes before using it.
2. For SDS-PAGE, if you use Mini-gel (0.75 mm-1.0 mm), you need load 5  $\mu$ L Marker in each well. For Western Blot, you need 2~3  $\mu$ L Marker in each well. If the concentration of the separation gel is less than 8% , and the thickness of it is  $\geq 1.5$  mm or Large-gel, it was necessary to increase the amount of marker appropriately.

### [Precaution]

1. the product avoids repeated freezing and thawing and stored at -25°C~-15°C after sub-packaging.
2. The separation effect of the product is related to the concentration of PAGE-gel. If it is a gel of low concentration (<8%), the low molecular weight proteins in the product might migrate faster than the dye. If the concentration of separation gel is about 10%, the bands of protein which less than 25 kDa would be not easy to separate, and the rest bands would not be affected. If the target band of protein is less than 25 kDa, it is recommended to use 15% separation gel. For the separation of 10~250 kDa bands of protein, it is recommended to use New Flash Protein AnyKD PAGE Gel (Cat. No. 8012011) or NewFlash Protein AnyKD Color PAGE Gel (Cat. No. 8012021).
3. This product is suitable for common membranes such as PVDF, nylon and cellulose acetate membranes.
4. The transfer effect is related to the transfer time and needs to be determined according to the size of the target band. If the transfer time is short, some of the large molecular weight bands may not be successfully transferred, which is a normal phenomenon.

5. The product contains a small amount of DTT. For your safety and health, please wear a lab coat and disposable gloves.


**[Product legend]**










Gel 12.5%Tris-Glycine Blot

**[Molecular weight guide]**

When using different protein gel types, concentration and electrophoresis buffer, the colored protein marker shows different mobilities and slightly different molecular weights, as shown in the table below.

Banding	Color	TRIS-GLYCINE	BIS-TRIS(MOPS)	BIS-TRIS(MES)	
1	blue	180	180	180	
2	blue	130	130	130	
3	blue	100	100	100	
4	red	70	70	70	
5	blue	55	55	55	
6	blue	45	45	45	
7	blue	35	35	35	
8	green	25	25	25	
9	blue	17	17	17	
10	green	10	10	10	

**[Description of Product Symbol]**

Product Symbol	Description	Product Symbol	Description
	Catalog Number		Batch code
	Date of Manufacture		Manufacturer
	Storage at -25°C~-15°C		Use-by date
	Consul tinstructions for use		

**[Company Information]**

**Manufacturer and after-sales service unit Name:** Shenzhen Dakewe Bio-engineering Co., Ltd.

**Website:** www.dakewe.com

**Telephone:** (86-755) 86235300

**Email:** RD@dakewe.com

**Address:** Room 702-703, Building No.1, Shenzhen Biomedicine Innovations Industrial Park, No.14 Jinhui Road, Kengzi Street, Pingshan District, Shenzhen, China

**After-sales service telephone:** (86-755) 86235300

**Zip Code:** 518122