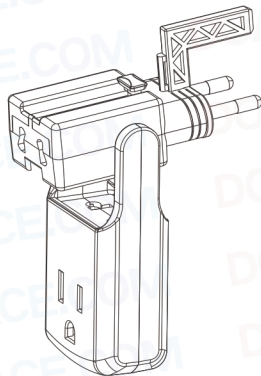


DOACE[®]

1>3 One to three
Universal travel adapter
Model: Ace3



www.doace.com

Thank you for choosing DOACE as your travel companion, for safety, please read this manual carefully before using and keep it for the next use.

Any damage caused by the wrong use or operation will be borne by the buyer.

Caution

- 1 Make sure your appliance is dual-voltage that will operate on a voltage supply between 100V and 240V.
- 2 This product could NOT convert voltage, please make sure the power socket you intend to use has the proper voltage that meet your device's requirement to avoid the damage and safety hazards.
- 3 This product may not work with certain high power appliances. Check your appliance label to see if it requires less than 10A.
- 4 Each country has their own regulations regarding the use of travel adapters, please check in each country before using this adapter.
- 5 Do not use with appliance requiring earth connection.
- 6 Please removed it from the electrical outlet when not in use.
- 7 Children should use it under parental supervision.
- 8 Parent Protected.

Supplementary explanation

- 1 How to distinguish between Dual-voltage and Single-voltage?
Dual-voltage: Some devices have a built-in converter or transformer, which are called dual voltage devices. Its surface usually appears parameters: 100-240V. Most laptop battery chargers and mobile phones are dual-voltage.

Customer service

- 1 18-month limited warranty
 - 2 Lifetime technical support
- Mail: support@doace.com
More ways to get help,
scan the QR code on the right



Features

- 1 3 US outlets, two 3-prong outlets and one 2-prong outlet included.
- 2 Covers more than 190 countries with US/EU/UK/AU plugs.
- 3 360° Rotatable, light, slim and easy to use gadge.
- 4 Single plug safety feature.

Specification

- 1 Input/Output: 100-240V AC, 10A Max, 50/60 Hz, 1100W Max at 110V AC, 2300 Max at 230V AC
- 2 Compatible with most dual-voltage devices like computer, mobile phone, camera, etc.

Operation instructions

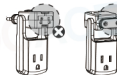
- 1 Please ensure that each plug must be in backward slots to the locking position after using this adapter.



- 2 Two sockets side: This side can be used one 3-prong device only or two 2-prong devices simultaneously.



- 3 Please do not insert plugs into the holes that are non-connective parts.

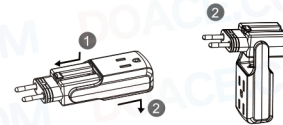


DOACE[®]



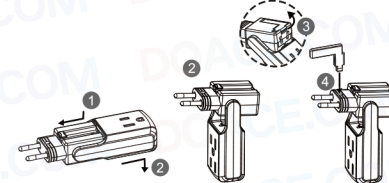
Waste electrical products should not be disposed of with household waste. Please recycle where facilities exist. Check with your Local Authority for recycling advice. Made in China

EUROPE



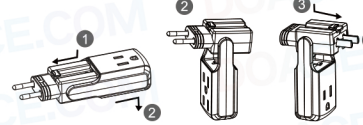
- 1 Gently press the button and slide to the end for EUROPE plug completely as shown.
- 2 Rotate the plug portion of the adapter as shown.

U.K.



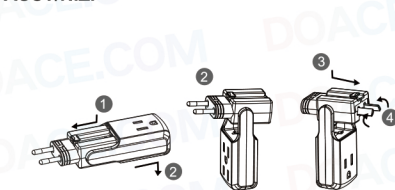
- 1 Gently press the button and slide to the end for U.K. plug completely as shown.
- 2 Rotate the plug portion of the adapter as shown.
- 3 Pull out the insulated U.K. ground pin.
- 4 Insert the U.K. ground pin to the rectangular slot as shown.

USA/CHINA



- 1 Gently press the button and slide to the end.
- 2 Rotate the plug portion of the adapter as shown.
- 3 Gently press the button and slide to the other end for USA/AUST plug completely as shown.
- 4 Make sure the contact blades are turned to the parallel position.

AUST/N.Z.



- 1 Gently press the button and slide to the end.
- 2 Rotate the plug portion of the adapter as shown.
- 3 Gently press the button and slide to the other end for USA/AUST plug completely as shown.
- 4 Make sure the contact blades are rotated to the "V" position.