



USER *Donner* **MANUAL**

Thank You for Choosing DONNER!

Please Read This Guide Carefully Before Use.

Welcome to Donner

We are very grateful to have you purchasing our product.

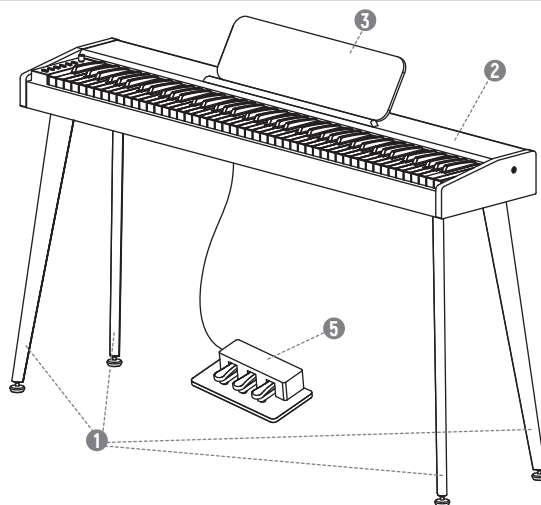
Please take a few minutes to read the instructions for operating this product, which will show you how to use it and explain the function and operation of the device, ensuring a trouble-free installation.

Please keep these operating instructions properly for future reference.

PRODUCT LIST

Please confirm whether the product is in good condition and accessories are included.

Name	Quantity
① Piano Stand	4 PCS
② Piano Body	1 PC
③ Music Stand	1 PC
④ M6*14mm Screws	20 PCS
⑤ Triple-Pedal	1 PC
⑥ Power Adapter	1 PC
⑦ Manual	1 PC



PRODUCT SPECIFICATIONS

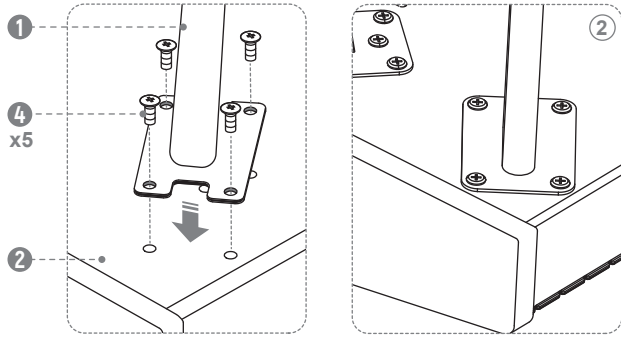
Product Name		Donner 88 Key Portable Digital Piano	
Size/Weight	Product Size	133.3*30.7*73.5cm (52.5*12.1*28.9in)	
	Product Weight	27.7kg (61.1pound)	
	Package Size	140*48.5*36cm (55.1*19.1*14.2in)	
	Package Weight	31.7kg (69.9pound)	
Performance Control	Keyboard	Keys	88-key Semi-weighted keyboard
		Touch Response	Off/Soft/Standard/Hard/Default
Function	Polyphony	Polyphonies (Max)	128
	Double Keyboard		Support
	Split Timbre		Support
	Rhythms		83
	Tones		128
	Demo Songs		47
	Effects		Reverb(8 types, switchable &adjustable)
	Record Function		Support
Metronomes	Type		6
	Beat Speed		30 ~ 280
Connecting Sockets Sound System	Power Socket		DC 12V 3A
	Headphone Socket		Support 6.35mm (1/4-inch)
	AUX OUT Socket		YES
	USB-MIDI Socket		YES
	Pedal Socket		YES
	Speaker output power		≥15Wx2
Specifications	Rated voltage		220-240V ~ (EU/UK)
			120V (US)
	Rated frequency		50Hz (EU/UK)
			60Hz (US)
	Rated power		1.0A Max
Intonation		≤3 cent	
Range		A2 ~ C5	

Attention: This product is electronic device and it's normal to hear some current noises in the speakers (one or two speakers, headphone) after power on. Keep away from interference sources including RF devices and equipment with motors, such as radios, routers, TVs, receivers, refrigerators, washing machines, etc.

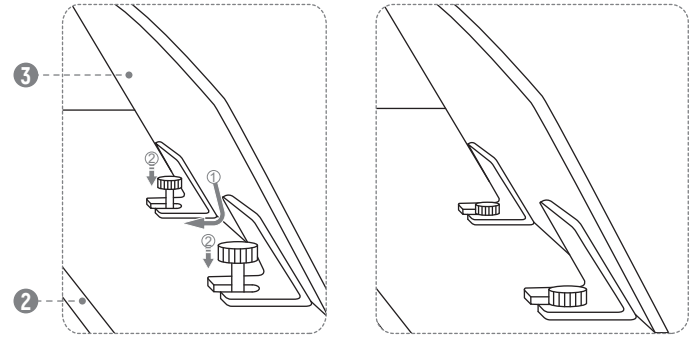


INSTALLATION GUIDE

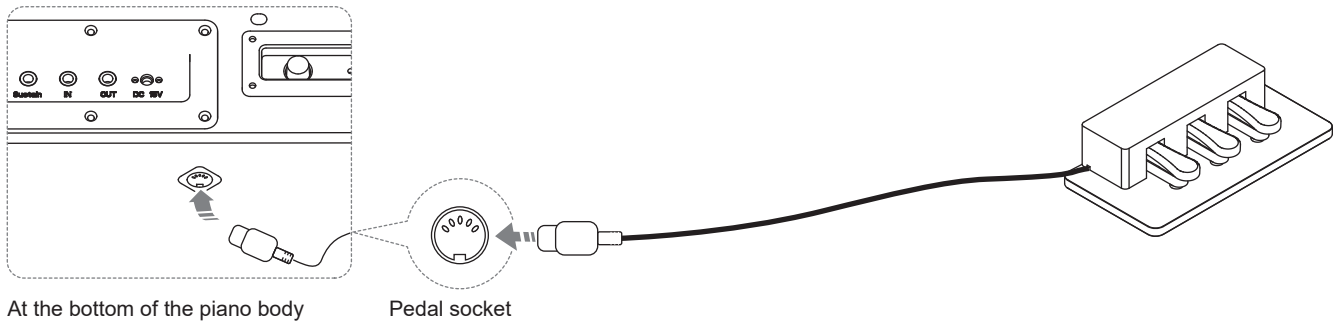
1. Piano stand installation



2. Music Stand Installation



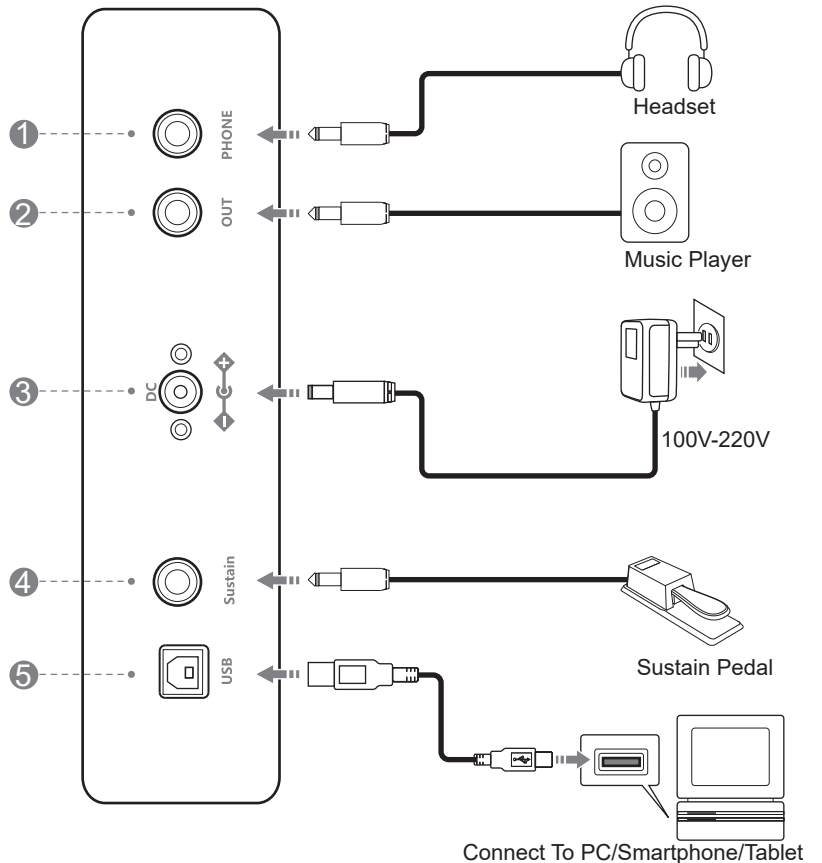
3. Pedal socket installation



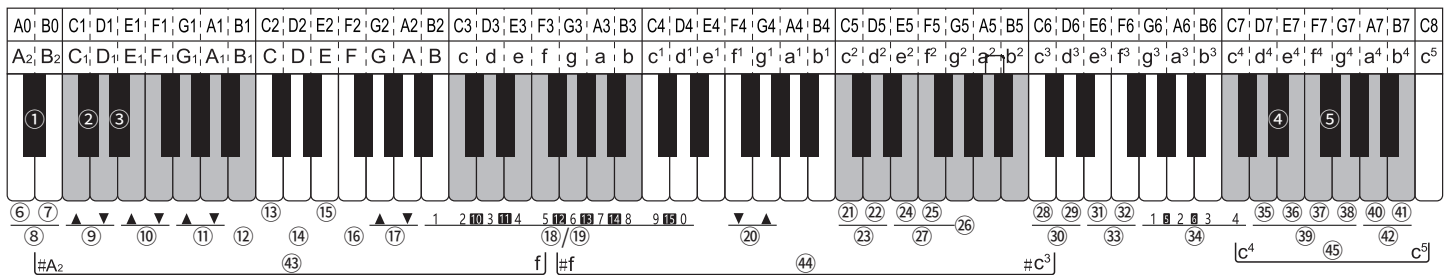
SOCKET ICON

Back of piano

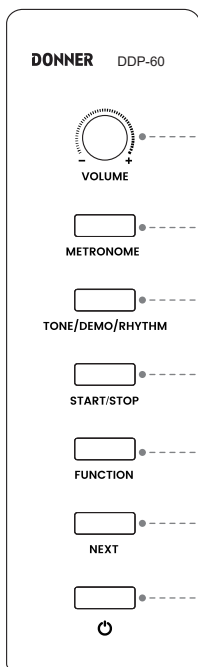
- 1 Headphone Port**
The output of electronic keyboard built-in speakers will be automatically cut off when headphone is connected so as not disturb others when playing.
- 2 Audio Output Plug**
The audio output port can support high-power speaker equipment.
- 3 Power Cord Connection**
1. Follow the power cord connection shown in the figure when in use, connect one end to the power socket in the panel at the bottom of piano, and the other end to the 100V-220V household power socket.
2. If the product will not be used for long, please unplug the power cord and keep in safe place.
- 4 Sustain Pedal**
This product is equipped with sustain pedal. Please step on the pedal as needed when in use.
- 5 USB Port**
The digital piano can be connected to computer through the USB port to learn or play the keyboard for performance, composition, storage and other functions by means of the pre-installed music software on the computer. The edited music and the built-in accompaniment of music software can be played on the digital piano by software connection or performed according to the accompaniment music.



FUNCTION INTRODUCTION



- | | | | | |
|------------------------|-------------------|----------------------------|----------------------------|-------------|
| ① Number - | ⑩ Octave | ⑲ Number" Key" | ⑳ On | ⑳ Standard |
| ② Sync Switch | ⑪ Transposition | ⑳ Brightness | ㉑ Off | ㉑ Hard |
| ③ Intro/Ending | ⑫ Memory Setting | ㉑ On | ㉒ Off | ㉒ Reverb |
| ④ Speed + | ⑬ Settings 1 | ㉒ Off | ㉓ Dual Tones | ㉓ On |
| ⑤ Speed - | ⑭ Settings 2 | ㉓ On | ㉔ On | ㉔ Chorus |
| ⑥ On | ⑮ Settings 3 | ㉔ On | ㉕ On | ㉕ Metronome |
| ⑦ Off | ⑯ Settings 4 | ㉕ On | ㉖ Off | ㉖ Off |
| ⑧ Chord | ⑰ Memory | ㉖ Off | ㉗ Dual Keyboard/Dual Piano | ㉗ Soft |
| ⑨ Accompaniment Volume | ⑱ Recording Track | ㉗ Dual Keyboard/Dual Piano | | ㉘ Tone |



- | | | |
|--------------|-------------|----------------------|
| ① VOLUME | ② METRONOME | ③ TONE/ DEMO/ RHYTHM |
| ④ START/STOP | ⑤ FUNCTION | ⑥ NEXT |

Tone Selection

1. No. 0 Acoustic Grand Piano is the default tone after power on.
2. Long press the "TONE/DEMO/RHYTHM" button and simultaneously press a corresponding key in the tone area "white key c4-c5" to enter the tone mode.
3. Press the "NEXT" button or long press the "FUNCTION" button and simultaneously press the "#A2 number-" key to switch the tone. Or long press the "FUNCTION" button and simultaneously press the corresponding "B-d1 number" Key" to select the tone (please refer to the Table of Tones).

Rhythm Selection

1. Long press the "TONE/DEMO/RHYTHM" button and simultaneously press any black and white key in rhythm area (#f-c3) to enter the Rhythm Mode.
2. In the mode of Rhythm Selection, press the "NEXT" button or long press the "FUNCTION" button and simultaneously press the "#A2 number-" key to switch the rhythm.
3. Or long press the "FUNCTION" button and simultaneously press the corresponding "B-d1 number key" to select the rhythm (please refer to the Table of Rhythms)
4. After the selection, press the "START/STOP" button to start rhythm playback, press the "START/STOP" button again to stop playing.

Selection of Demo Music

1. Long press the "TONE/DEMO/RHYTHM" button and simultaneously press any black and white key in the demo area (#A2-f) to enter the Music Mode.
2. In the mode of Music Mode, press the "NEXT" button or long press "FUNCTION" button and simultaneously press the "#A2 number-" key to switch the rhythm.
3. Or long press the "FUNCTION" button and simultaneously press the corresponding "B-d1 number key" to select music (Please refer to the Table of Music)
4. After the selection, press the "START/STOP" button to start music playback, press the "START/STOP" button again to stop playing.

Demo Teaching Function

1. In the demo music mode (please refer to the Demo Selection to enter the demo mode), long press any black and white key (demo area #A2-f) first and then press "START/STOP".
2. Then enter the mode of demo teaching. Press any key on the keyboard to start playing the main melody. The melody will stop if no keys are pressed.
3. Press the "START/STOP" button again to exit the mode.

Auto Chord

1. Long press the "FUNCTION" button and simultaneously press the "A2 Chord On" button on the keyboard to activate the auto chord.
2. Long press the "FUNCTION" button and simultaneously press the "B2 Chord Off" button on the keyboard to inactive the auto chord.

Sync ON and Sync OFF

1. Long press the "FUNCTION" button and simultaneously press the "#C1Sync" button on the keyboard to turn on the sync function.
2. Press the "#C1Sync" button again to turn off the sync function.

Intro/Ending

1. Long press the "FUNCTION" button and simultaneously press the "#D1Intro/Ending" button on the keyboard, and then press the "START/STOP" button to start the intro playing,
2. During the rhythm playing, long press the "FUNCTION" button and simultaneously press the "#D1Intro/Ending" button on the keyboard to start the ending playing.

Accompaniment Volume

Long press the "FUNCTION" button and simultaneously press the "C1 Accompaniment Volume Up" button or "D1 Accompaniment Volume Down" on the keyboard adjust the accompaniment volume.

Octave

Long press the "FUNCTION" button and press "E1 Octave Up" or "F1 Octave Down" on the keyboard to adjust the octave.

Transposition

Long press the "FUNCTION" button and press "G1 Transposition Up" or "A1 Transposition Down" on the keyboard to adjust ± 12 semitones.

Brightness

Long press the "FUNCTION" button and press "f1 Brightness Up" or "g1 Brightness Down" on the keyboard to adjust the sound brightness.

Recall/Save

1. Long press the "FUNCTION" button and press any one of "C-F Settings 1-4" keys on the keyboard, and then long press the "Memory Setting" to save your selected parameters such as tone, rhythm, speed and volume.
2. Long press the "FUNCTION" button and press the "C-F Settings 1-4" key in the settings you just saved, and then short press the "Memory Setting" to recall the saved parameters.
3. This piano is capable of four save settings, 4 memories and 16 memory settings in total. Long press the "FUNCTION" button first and then press the "G Memory Up" key or "A Memory Down" key to select the memory.

Recording/Playback

1. Long press the "METRONOME" button and press "B-d1 Recording Track" on the keyboard after the beep to select the track to be recorded. There are "0-15" tracks in total, of which 1-15 is the melody track and 0 is the accompaniment track.
2. After selecting the recording track, it will enter the recording mode. Play the piano and start recording, the metronome indicator flashes to start recording.
3. Long press the "START/STOP" button to stop recording, and the metronome stops flashing to exit the recording mode.
4. Long press the "START/STOP" button again to play the recorded sound.
5. Recording Deletion: Long press the "metronome" button to enter the recording mode after the beep, and then long press the "PLAY/STOP" button to delete all track recordings.

Dual Tones:

1. Choose one tone as the first of dual tones.
2. Long press the "FUNCTION" button and press the "C2 Dual Tone" key on the keyboard.
3. The dual tone is activate now and the second tone is the No. 49 tone by default.
4. In this mode, enter the Tone Mode to change the second tone (please refer to the Tone Selection.)
5. Press and hold the "FUNCTION" button again, and press the "d 2 Dual Tone Off" key on the keyboard to exit the dual tone mode.

Dual Keyboard/Dual Piano:

1. Choose a tone as the left area.
2. Long press the "FUNCTION" button and press the "e2 Dual Keyboard" key on the keyboard to activate the Dual Keyboard mode.
3. In the activated state, the keyboard is divided into two identical areas on the left and right. The split point is located at the Middle C. In the Dual Keyboard mode, the pitch of Middle C is always the same as the pitch of the rightmost C.
4. In this mode, enter the Tone Mode to change the tone of right area (please refer to the Tone Selection.)
5. Long press the "FUNCTION" button and press the "f2 Dual Piano" key on the keyboard. Then, both the left and right keyboards will play the tone of piano.
6. Long press the "FUNCTION" button and press the "g2 Dual Keyboard/Dual Piano Off" key on the keyboard to exit Dual Keyboard/Dual Piano mode.

Reverberation

1. Long press the "FUNCTION" button and press the "c3 Reverb On" key on the keyboard to activate the reverb mode. Then, the digital piano will play with the reverb effect.
2. Press the "C3 Reverb" button to switch the type of reverberation. All together 8 reverberation effects are preset.
3. Long press the "FUNCTION" button and press the "d3 Reverb Off" button to turn off the reverb effect.

Chorus

1. Long press the "FUNCTION" button and press the "e3 Chorus" key on the keyboard to activate the chorus mode, then the digital piano will play with the chorus effect.
2. Press the "e3 Chorus" button to switch the type of chorus. All together 8 chorus effects are preset.
3. Long press the "FUNCTION" button and press the "f3 Chorus Off" button to turn off the chorus effect.

Metronome

1. Long press the metronome button in the function box and the indicator will light up to play the metronome.

2. Long press the "FUNCTION" button and press the "g3-b3 Beat 1-6" key on the keyboard to select the number of beats.

Speed

1. Long press the "FUNCTION" button and press "#d4 Speed Up" on the keyboard to increase the BPM value.
2. Long press the "FUNCTION" button and press "#f4 Speed Down" on the keyboard to reduce the BPM value.
3. BPM Range: 30-280

Strength

1. Long press the "FUNCTION" button and press the "d4-g4 Strength" button on the keyboard to select the strength curve of the keyboard.
2. All together 5 strength curves: "OFF, SOFT, STANDARD, HARD" and default strength after power on.

Keyboard Percussion

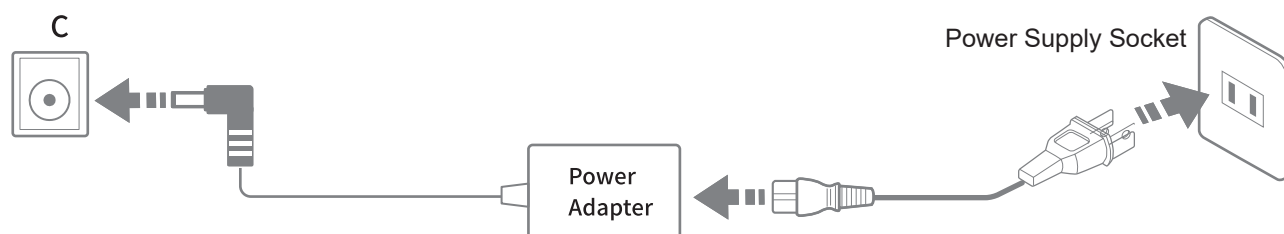
1. Long press the "FUNCTION" button and press the "a4 Percussion On" button on the keyboard to enter the Keyboard Percussion mode, and the keyboard will play the percussion effect.
2. Long press the "FUNCTION" button and press the "b4 Percussion Off" button on the keyboard to exit the Keyboard Percussion mode.

SECURITY CONSIDERATION

WARNINGS/CAUTIONS

● Power Adapter

- This product is available for the standard indoor wall socket.
- Please use only the power cord specified by this product.
- Please turn off the power supply and pull out the power cord when the product is not in use for an extended period of time.



● Smoke, odor, overheating

- The following operations shall be carried out immediately to avoid the danger of fire and electric shock when the product is smoking, emitting odors, or overheating.
 1. Turn off the power supply.
 2. Pull the plug from the power outlet.
 3. Contact the local agency.

● Power Supply and Power Line

- Improper use of power supply and power lines may cause the danger of fire and electric shock. The following precautions must be observed:
 1. Specified power lines for this product must be used.
 2. An AC power adaptor with output voltage within the household rated voltage must be used.
 3. Do not place the power cord near the heat and wet sources.
 4. Do not overload wall outlets and extension cords.
 5. Do not place heavy objects on the power lines.
 6. Do not twist and bend the power lines.
 7. Do not use wet hands to touch the power cord and plug.
 8. Unplug the power cord from the power outlet when not using the instrument or during a thunderstorm.
 9. Make sure that the power is off when connecting or cutting off the power cord.
 10. Children should not be allowed to contact the plug and power line when there is no adult supervision.

● Water and Foreign Matter

- Please turn off the power supply and unplug the power cord so as to avoid the danger of fire and electric shock when water and other foreign matter into this product.

● Dismantlement

- Please do not disassemble or modify this product so as to avoid the danger of fire and electric shock.

- **Handling and transportation**

- Never apply excessive force to the controls, connectors, or other parts of the instrument.
- Grab the plug firmly while unplugging the cables, never pull the cables with force.
- Disconnect all cables before moving the instrument.
- Shocks caused by dropping, bumping the instrument, or placing heavy objects on top of it, can result in scratches and even more severe damages.

- **Placement**

- Please do not place this product on an uneven surface or any other unstable place so as to avoid any falling damage.

- **Interface**

- The interface of this product can only be connected to the specified equipment and devices. The connection of non-designated equipment or devices has the risk of fire and electric shock.

- **Plastic Bag**

- Keep the plastic bag away from children to avoid suffocation

- **Volume**

- Do not use the instrument at high volume for long periods of time. A high volume may damage your hearing.

- **Clean**

- Please remove the power cord from the wall outlet before cleaning this product so as to avoid the danger of fire and electric shock.

TROUBLESHOOTING

Issue	Reason	Solution
There was no sound on the keyboard.	1. Volume Controller Set at Minimum Position. 2. Headphones or Plug Converters insert headphone jack. 3.The power supply is not connected or the piano is off.	1.Turn the volume to the right maximum volume. 2.Remove the original connector from the headphone jack. 3Turn on the power supply and press the boot button.
The pedals don't work.	1.Connecting the Line jack of the pedal is not plugged into the piano. 2.Pedal plug loose.	1.Plug the pedal cord into the piano socket. 2.Check to confirm whether the plug at one end of the pedal connection is loose or not and then tighten it.
When the piano power is turned on or off there is a murmur.	Normal phenomenon	This is a normal phenomenon, indicating that the current enters the machine at this time.
The piano is noisy when using a mobile phone.	Radio interference	The use of mobile phones in the vicinity of the piano produces radiation. To avoid this situation, you can turn off the mobile phone or use it away from the piano.
Abnormal tone or rhythm.	Power shortage	Power shortage. Check power stability.
It seems that all tones are pronounced or that the pronunciation seems to be cut off.	Normal phenomenon	The maximum number of simultaneous sounds on this instrument is 128 notes. If the dual tone mode is in use and the accompaniment or music is playing, some notes or sounds in the accompaniment or music will be default.
Under the same timbre, the quality of a note is different from that of a note.	Normal phenomenon	This is a normal phenomenon. This machine adopts AWM sound source mode. This kind of sound source is sampled and recorded in the whole keyboard area, so the quality of the two notes is slightly different.
Connecting Computer, Not recognized	USB plug loose	No need to install extra drives. If the piano isn't recognized by the computer, please check if the USB cords are connected securely or try to connect the other USB socket of the computer.

PIANO MAINTENANCE

Conscientiously do a good job in the maintenance and protection of this product. It plays an important role in prolonging the service Life and reducing faults.

1. Avoid heat, dampness, or direct sunlight

The product should not be exposed excessively to the direct sunlight, placed near the air conditioner or extremely hot places.

2. No use near TV or radio.

This product may cause video or audio interference to the reception of TV and radio. If this happens, it should be removed from the radio or TV products.

3. Don't use paint, diluent or similar chemicals to clean it.

Wet a soft towel with weak solution and detergent and wring it out until it dries. Clean the product with this towel.

4. No shaking and collision.

The product should be moved carefully. Violent shake and collision are prohibited to avoid damaging the shell or internal electronic components.

AFTER SALE SERVICE

This product is available for 12 months of quality guarantee service.

If you need help concerning the product, after-sales service or any other related questions, please feel free to contact us via email service@moukeysound.com.

FCC STATEMENT

Changes or modifications not expressly approved by the party responsible for compliance could void the user's authority to operate the equipment.

This equipment has been tested and found to comply with the limits for a Class B digital device, pursuant to Part 15 of the FCC Rules. These limits are designed to provide reasonable protection against harmful interference in a residential installation. This equipment generates uses and can radiate radio frequency energy and, if not installed and used in accordance with the instructions, may cause harmful interference to radio communications. However, there is no guarantee that interference will not occur in a particular installation. If this equipment does cause harmful interference to radio or television reception, which can be determined by turning the equipment off and on, the user is encouraged to try to correct the interference by one or more of the following measures:

- Reorient or relocate the receiving antenna.
- Increase the separation between the equipment and receiver.
- Connect the equipment into an outlet on a circuit different from that to which the receiver is connected.
- Consult the dealer or an experienced radio/TV technician for help

This device complies with part 15 of the FCC rules. Operation is subject to the following two conditions (1) this device may not cause harmful interference, and (2) this device must accept any interference received, including interference that may cause undesired operation.

This equipment complies with FCC radiation exposure limits set forth for an uncontrolled environment. This equipment should be installed and operated with minimum distance 20cm between the radiator & your body.

Demo Songs

0	Marriage Dreamour	16	Etude 05	32	Etude 21
1	ChopinFi	17	Etude 06	33	Etude 22
2	Turkish March	18	Etude 07	34	Etude 23
3	Carman Orerture	19	Etude 08	35	Etude 24
4	The River of	20	Etude 09	36	Etude 25
5	Nobody	21	Etude 10	37	Etude 26
6	Book of songs	22	Etude 11	38	Etude 27
7	Canon	23	Etude 12	39	Etude 28
8	The Butterfly lovers	24	Etude 13	40	Etude 29
9	Romance De Amor	25	Etude 14	41	Etude 30
10	Starry sky	26	Etude 15	42	Etude 31
11	Sonata	27	Etude 16	43	Etude 32
12	Etude 01	28	Etude 17	44	Etude 33
13	Etude 02	29	Etude 18	45	Etude 34
14	Etude 03	30	Etude 19	46	Etude 35
15	Etude 04	31	Etude 20		

Voice

Piano		Chromatic Percussion		Organ	
0	Acoustic Grand	8	Celesta	16	Hammond Organ
1	Bright Acoustic	9	Glockenspiel	17	Percussive Organ
2	Electric Grand	10	Music box	18	Rock Organ
3	Honky-tonk Piano	11	Vibraphone	19	Church Organ
4	Rhodes Piano	12	Marimba	20	Reed Organ
5	Chorused Piano	13	Xylophone	21	Accordian
6	Harpsichord	14	Tubular Bells	22	Harmonica
7	Clavichord	15	Dulcimer	23	Tango Accordian

Guitar		Bass		Strings	
24	Acoustic Guitar	32	Acoustic Bass	40	Violin
25	Acoustic Guitar	33	Electric Bass(finger)	41	Viola
26	Electric Guitar (jazz)	34	Electric Bass (pick)	42	Cello
27	Electric Guitar	35	Fretless Bass	43	Contrabass
28	Electric Guitar	36	Slap Bass 1	44	Tremolo Strings
29	Overdriven Guitar	37	Slap Bass 2	45	Pizzicato Strings
30	Distortion Guitar	38	Synth Bass 1	46	Orchestral Harp
31	Guitar Harmonics	39	Synth Bass 2	47	Timpani

Ensemble/Synth		Brass		Reed	
48	String Ensemble 1	56	Trumpet	64	Soprano Sax
49	String Ensemble 2	57	Trombone	65	Alto Sax
50	Synth Strings 1	58	Tuba	66	Tenor Sax
51	Synth Strings 2	59	Muted Trumpet	67	Baritone Sax
52	Choir Aahs	60	French Horn	68	Oboe
53	Voice Oohs	61	Brass Section	69	English Horn
54	Synth Voice	62	Synth Brass 1	70	Bassoon
55	Orchestra Hit	63	Synth Brass 2	71	Clarinet

Pipe		Synth Lead		Synth Pad	
72	Piccolo	80	Lead 1 (square)	88	Pad 1 (new age)
73	Flute	81	Lead 2 (sawtooth)	89	Pad 2 (warm)
74	Recorder	82	Lead 3 (caliope)	90	Pad 3 (polysynth)
75	Pan Flute	83	Lead 4 (chiff lead)	91	Pad 4 (choir)
76	Bottle Blow	84	Lead 5 (charang)	92	Pad 5 (bowed)
77	Shakuhachi	85	Lead 6 (voice)	93	Pad 6 (metallic)
78	Whistle	86	Lead 7 (fifths)	94	Pad 7 (halo)
79	Ocarina	87	Lead 8	95	Pad 8 (sweep)

Synth Effects		Ethnic		Percussive		Sound Effects	
96	FX 1 (rain)	104	Sitar	112	Tinkle Bell	120	Guitar Fret Noise
97	FX 2 (soundtrack)	105	Banjo	113	Agogo	121	Breath Noise
98	FX 3 (crystal)	106	Shamisen	114	Steel Drums	122	Seashore
99	FX4 (atmosphere)	107	Koto	115	Woodblock	123	Bird Tweet
100	FX 5 (brightness)	108	Kalimba	116	Taiko Drum	124	Telephone Ring
101	FX 6 (goblins)	109	Bagpipe	117	Melodic Tom	125	Helicopter
102	FX 7 (echoes)	110	Fiddle	118	Synth Drum	126	Applause
103	FX 8 (sci-fi)	111	Shanai	119	Reverse Cymbal	127	Gunshot

Rhythm

0	7_8	21	DanceRock	42	JazzDance	63	Samba
1	8Beat	22	DancyPop	43	JazzFunk	64	Shuffle
2	16Beat	23	DeepHappy	44	JazzRap	65	SlowBeat
3	80sPop	24	Disco	45	LazyPop	66	SlowPop
4	90sDance	25	Dixie	46	March	67	SlowRock
5	Acid	26	Drum_Bass	47	Polka	68	Smooch
6	African	27	EasyBeat	48	Pop	69	SoBas
7	AfroPop	28	EasyRock	49	Pop_Rock	70	Soca
8	70sDisco1_E	29	EuroSong	50	PopBallad	71	SoulBeat
9	Balla_B	30	FastFunk	51	PopBossa	72	Standard
10	Beguine	31	Folk	52	PopDisco	73	Swing
11	Big_Band	32	Funk	53	Popeuro	74	Tango
12	Blues	33	Fusion	54	Power_Pop	75	TecnoPop
13	Bossa_Nova	34	Geloun	55	R&B	76	TeenyPop
14	Break_Beat	35	GlamRock	56	R&B_Ballad	77	TetJazz
15	CaSo	36	GothDance	57	RealSoul	78	Trot
16	Cha-Cha	37	Grunge	58	Reggae	79	Trycoun
17	Chinadance	38	Guinebe	59	ReggaeSoul	80	Uban
18	CntrRock	39	HappyPop	60	Rock&Roll	81	UesBI
19	CoolSoul	40	Hard Rock	61	RockBeat	82	Waltzer
20	Dancekik	41	HipHop	62	Salsa		