

SPECIFICATION

GB

This technical product information is exclusively for the installer or trained specialists. Please pass these instructions on to the user.

Application:

Operation with unpressurized storage heaters is not possible. Use for indoor public places and common residence.

Specifications

Flow pressure:	min. 0.5 bar – recommended 1 – 5 bar
Operating pressure:	max. 10 bar
Test pressure:	16 bar
Flow rate at 1 bar flow pressure for shower:	4-9 L/min
Hot water inlet temperature:	max. 90°C
Recommended (energy saving):	60°C
Environment temperature:	5°C ~45°C

If static pressure exceeds 5 bar, a pressure-reducing valve must be fitted.

Avoid major pressure differences between hot and cold water supply.

Installation:

Flush piping system prior and after installation of fitting thoroughly (Consider EN 806)! Fitting a temperature limiter is possible.

Function:

Check connections for leaks and check function of fitting.

Maintenance:

Inspect and clean all components and replace if necessary. Shut off water supply for maintenance work.

When installing the cartridge, ensure that the seals are correctly seated. Tighten the screws evenly and alternately.

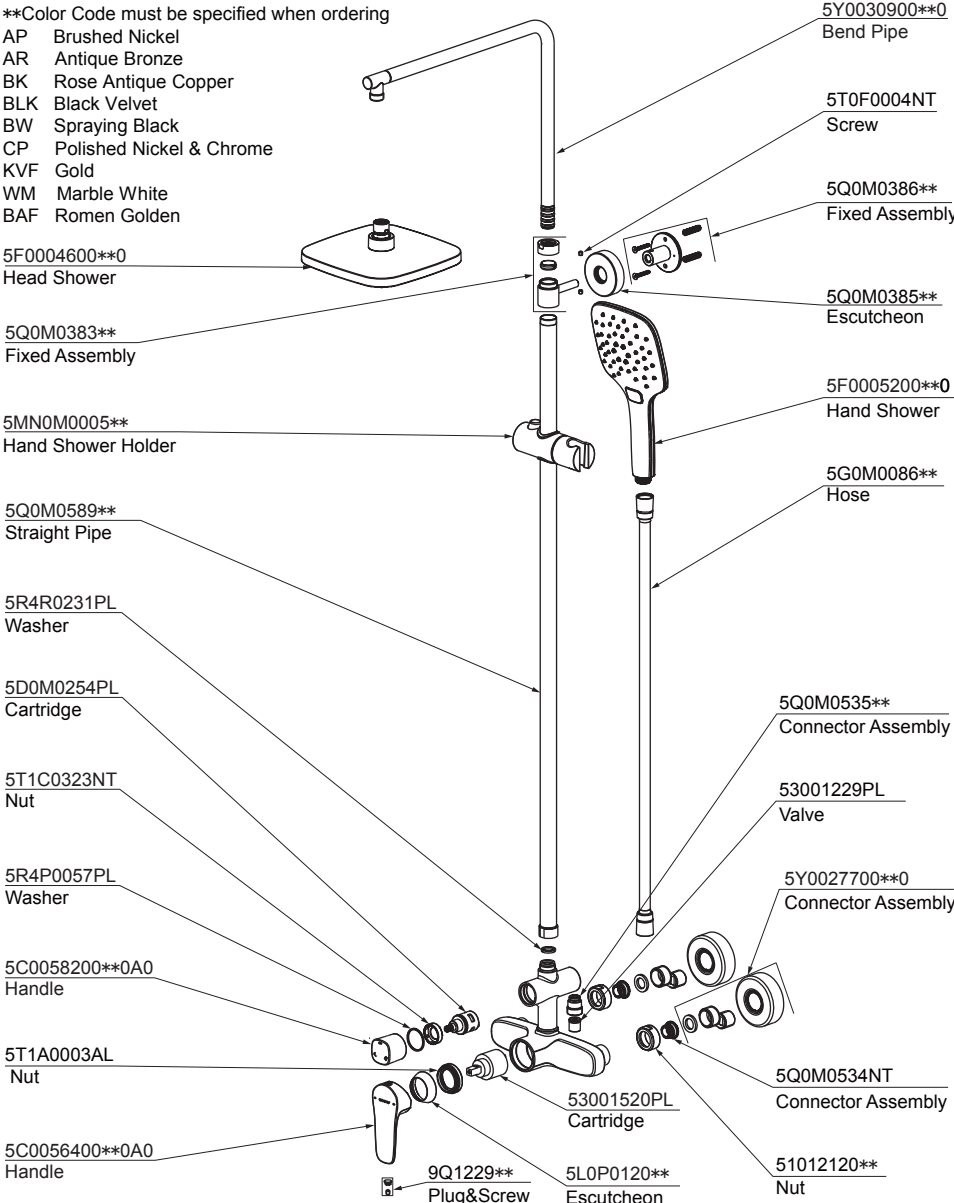
Replacement parts: see exploded drawing. Care: see Care Instructions.

PACKING LIST

ITEM	QTY	ITEM	QTY
Products Installation Instructions	1		
Bravat Warranty Terms & Conditions	1		
Valve assembly	1		
Shower(Spray)	2		
Shower bracket	1		
Fixed seat	1		
Hose	1		
Pipe	2		
Accessories (pack)	1		
Escutcheon	1		

Designed and Developed by Bravat/Dietsche,Germany

PRODUCT INSTALLATION INSTRUCTIONS

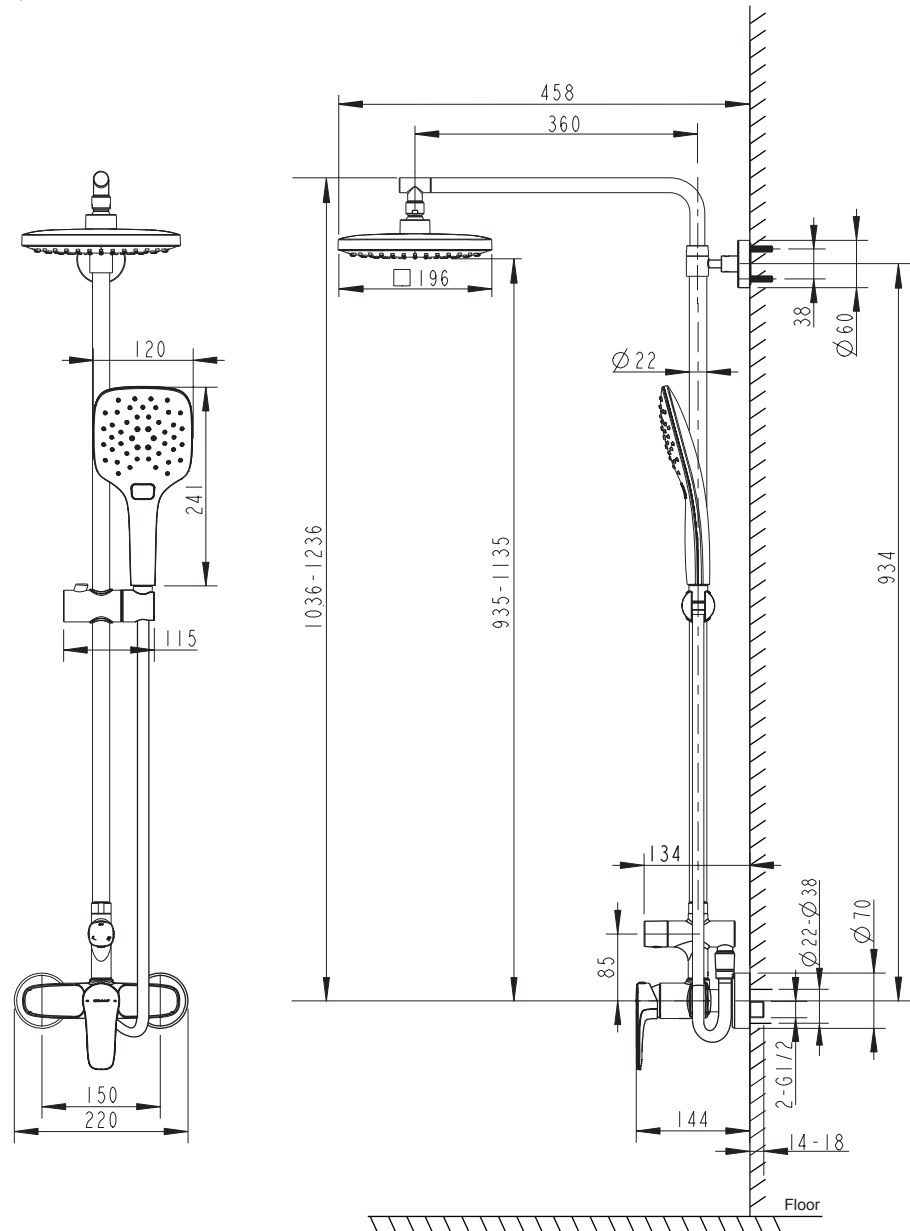


Designed and Developed by Bravat/Dietsche,Germany

15123093-A

A INSTALLATION DIMENSION

Unit:mm



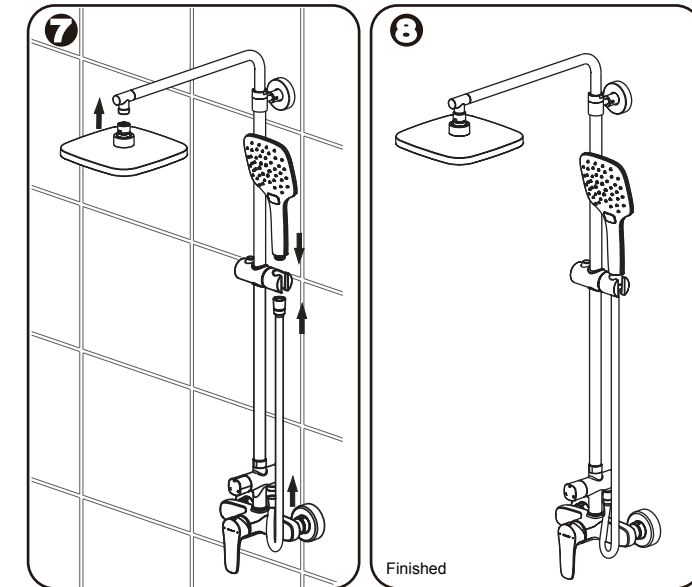
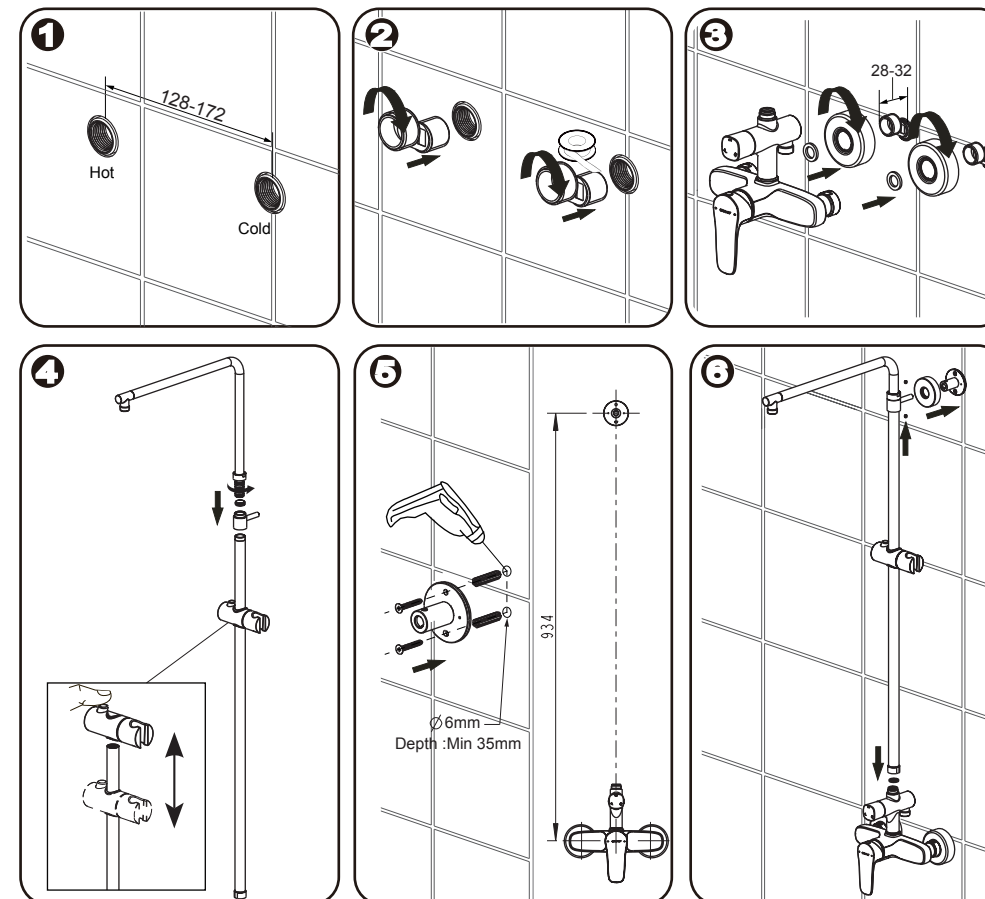
B HELPFUL TOOLS



 Points for attention before installation

- Before installing the new mixer, it is essential that you thoroughly flush through the supply pipes in order to remove any remaining swarf, solder or other impurities. Failure to carry out this simple procedure could cause problems or damage to the workings of the mixer.
- Work water pressure: 0.5-5 bar (Including cold and hot).
- If the pictures and statements in the 'Installation Specifications' is unconfirmed with practicality, please take practicality as standard.

C INSTALLATION STEP



D FAUCET OPERATION

