

PRODUCTS INSTALLATION INSTRUCTIONS

A HELPFUL TOOLS

Pencil



Impact Drill



Adjustable Wrench



Screwdriver



Tape Measure



Cutting machine



Supply Shut-Off Valve



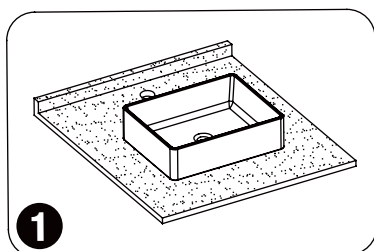
Neutral Mildew Resistant
Silicone Sealant



Teflon Tape

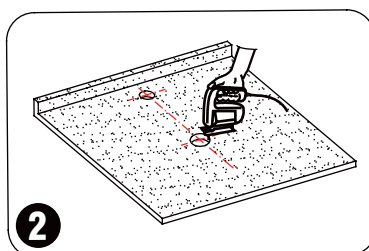


B COUNTERTOP BASIN INSTALLATION PROCEDURES



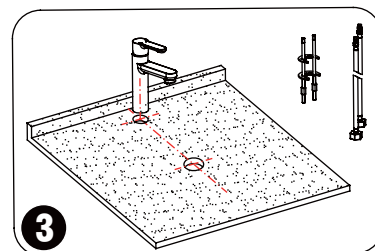
1

Place the basin on the counter, and determine the installation positions for the faucet and basin according to the installation requirements for the supporting faucet.



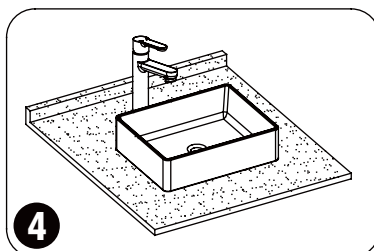
2

Mark the faucet and basin at the determined installation positions with a pencil, use the cutting machine or electric drill to make holes, and then sand the edge of the holes.



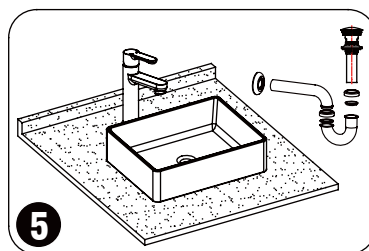
3

Install the faucet and its components.



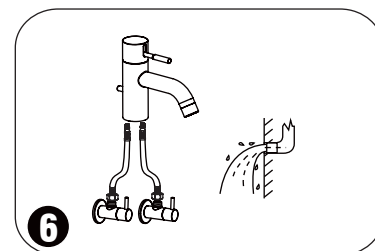
4

Apply mildew-proof neutral glass cement on the contact area of the basin bottom part and counter, place the basin properly on the surface, and then firmly press it (let it dry for 24 hours).



5

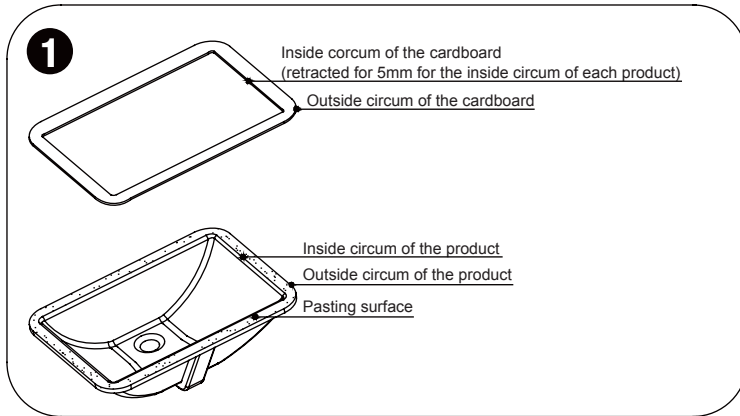
Install a lever faucet to the basin.



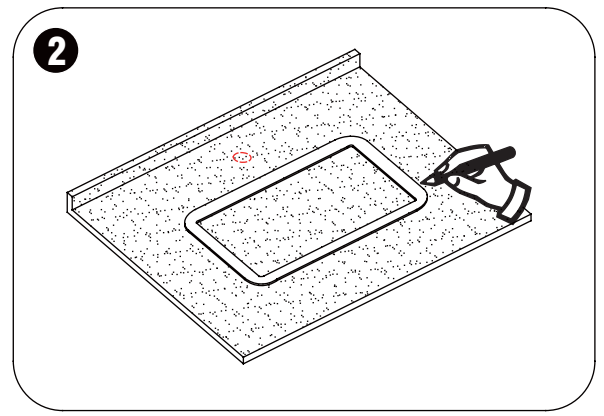
6

Connect the water supply pipe to the faucet, and carefully bend the pipe to make it match the water supply shut-off valve. Ensure the pipe is sealed. (Always wash the sediments in the water supply pipe away before connecting the shut-off valve.)

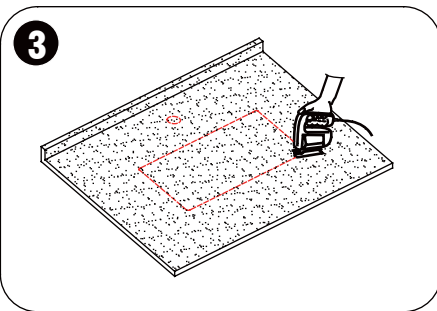
C UNDERCOUNTER BASIN INSTALLATION PROCEDURES



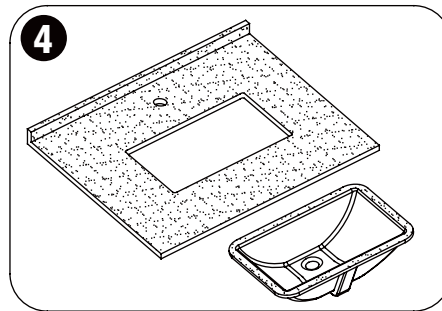
Make the cardboard mold according to the pasting surface of the basin.



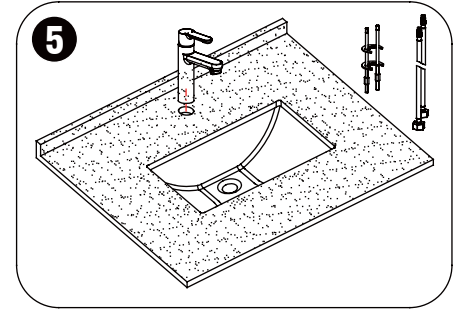
Place the cardboard mold on the counter, and determine the installation positions for the faucet and basin according to the installation requirements for the supporting faucet. Use a pencil to draw the auxiliary line.



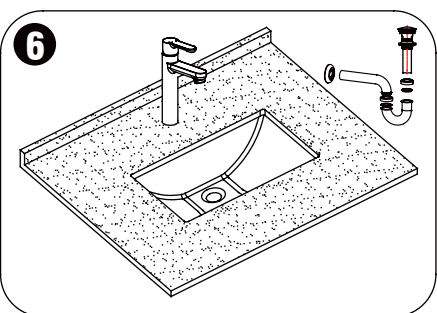
Use the cutting machine or electric drill to make holes along the auxiliary line, and sand the edge of the holes.



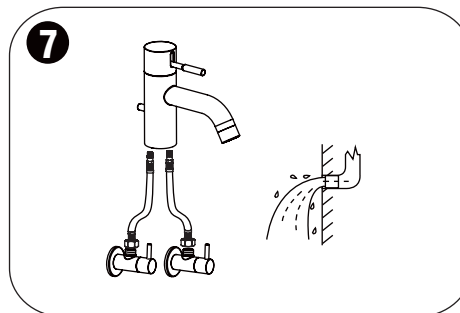
Use the cutting machine or electric drill to make holes along the auxiliary line, and sand the edge of holes. Place the cardboard mold to the bottom of the counter, use a pencil to draw the auxiliary line. Apply special glue water on the contact area of the basin and counter, and then paste the basin along the auxiliary line with tightness (let it dry for 24 hours).



Install the faucet and its components.

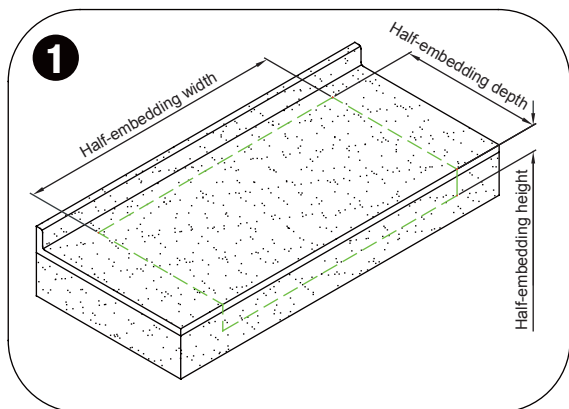


Install a lever faucet on the basin. Install the faucet and its components.

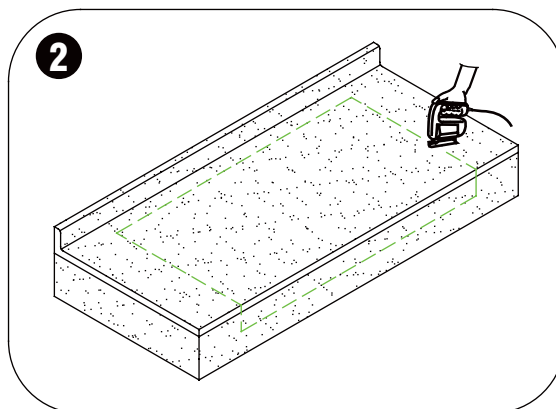


Connect the water supply pipe to the faucet, and carefully bend the pipe to make it match the water supply shut-off valve. Ensure the pipe is sealed. (Always wash the sediments in the water supply pipe away before connecting the shut-off valve.)

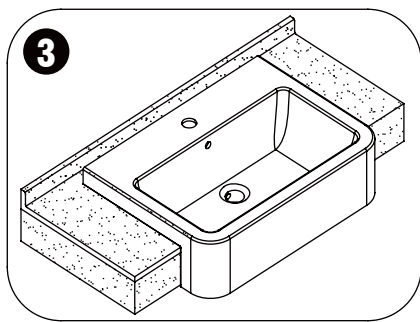
D COUNTERTOP HALF-EMBEDDED BASIN



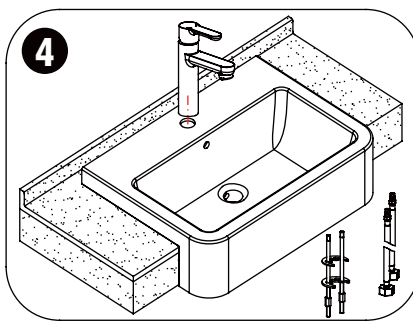
Use a ruler and a pencil to draw the auxiliary line on the counter surface according to the half-embedding dimensions of the countertop half-embedded basin.



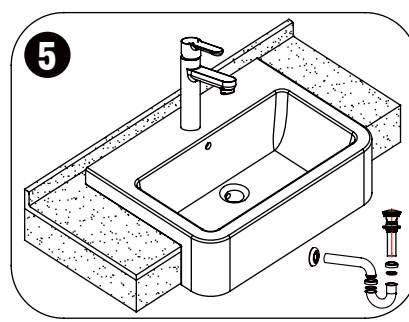
Use the cutting machine or electric drill to make holes along the auxiliary line, and sand the edge of the holes.



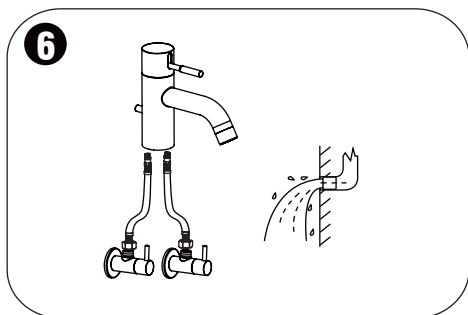
Place the basin on the counter already drilled with holes, and then apply the mildew-proof neutral glass cement in the same color to the contact area of the basin and counter to prevent leakage.



Install the faucet and its components.

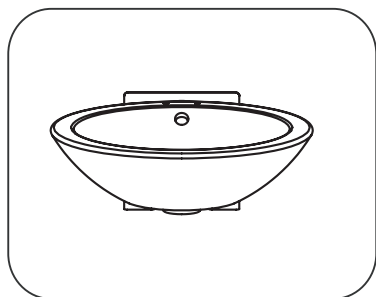


Install a lever faucet on the basin.

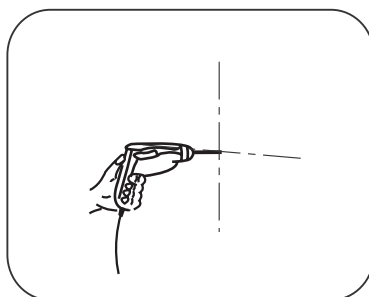


Connect the water supply pipe to the faucet, and carefully bend the pipe to make it match the water supply shut-off valve. Ensure the pipe is sealed. (Always wash the sediments in the water supply pipe away before connecting the shut-off valve.)

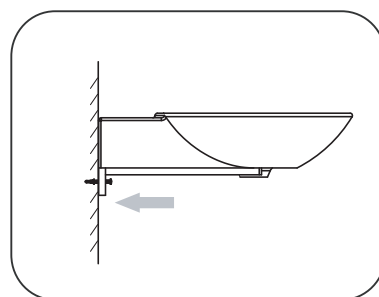
E WALL-HUNG BASIN



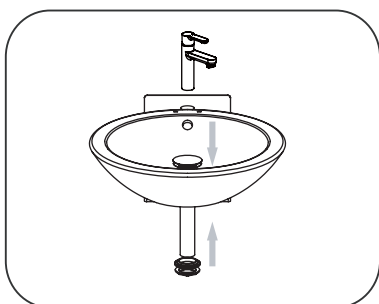
Place the wall-hung basin to the installation position followed by the level correction, and then check whether the basin is aligned with the wall. Use a pencil to draw the installation positions on the wall according to the basin installation holes.



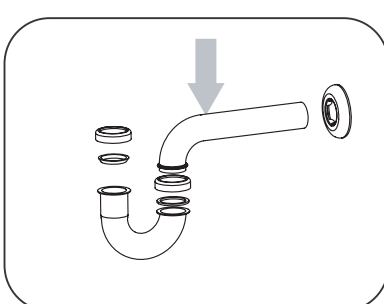
Use an impact drill to drill hole at the marked installation positions.



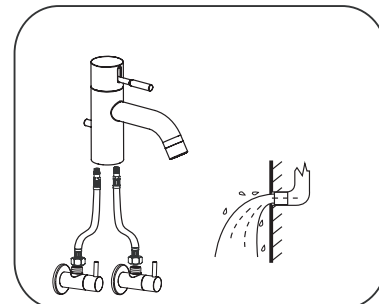
Mount the expansion bolts in the installation holes and adjust the extension length. Fix the wall-hung connecting expansion bolts to the wall.



Install the faucet and its components.

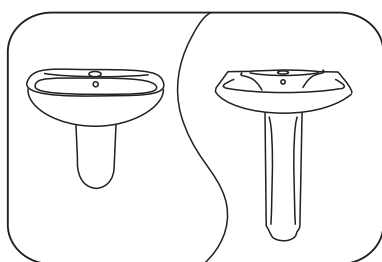


Install a lever faucet on the basin.

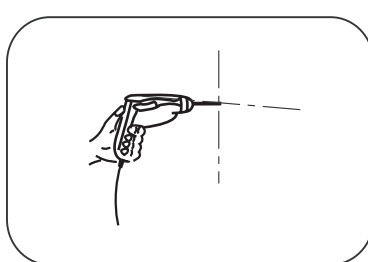


Connect the water supply pipe to the faucet, and carefully bend the pipe to make it match the water supply shut-off valve. Ensure the pipe is sealed. (Always wash the sediments in the water supply pipe away before connecting the shut-off valve.)

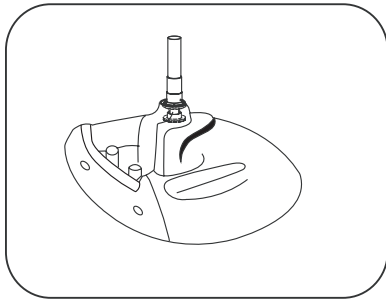
F WALL-HUNG PEDESTAL BASIN/VERTICAL PEDESTAL BASIN



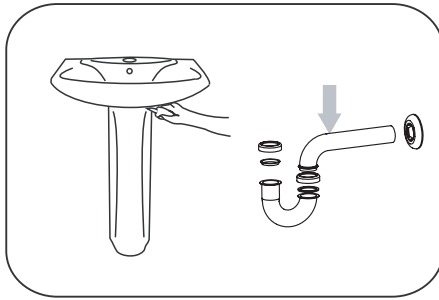
Place the wall-hung basin to the installation position followed by level correction, and then check whether the basin is aligned with the wall. Use a pencil to draw the installation positions on the wall according to the basin installation holes.



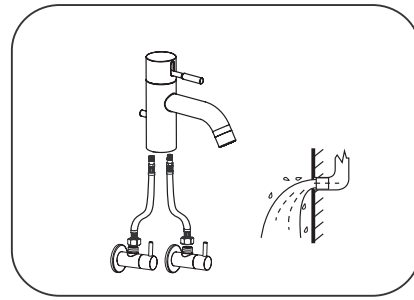
Use an impact drill to drill hole at the marked installation positions.



Install the faucet and its components.



Mount the expansion bolts in the installation holes and adjust the extension length. Fix the wall-hung connecting expansion bolts to the wall, and install a lever faucet on the basin.



Connect the water supply pipe to the faucet, and carefully bend the pipe to make it match the water supply shut-off valve. Ensure the pipe is sealed. (Always wash the sediments in the water supply pipe away before connecting the shut-off valve.)

G MAINTENANCE

- If the pictures and statements in the 'Installation Specifications' is unconfirmed with practicality, please take practicality as standard.

To keep the surface clean and bright, please clean regularly, please abide by the following procedures:

1. Use rinsing water and soft cloth, clean bilge and bilge membrane on the surface to the best of the abilities.
2. Cleaned the residua with the following cleansers only.

- ☒ Soft liquid cleanser.
- ☒ Colorless glass cleanser, totally soluble powder cleanser without abrasive capability. (Mixed by instructions.)
- ☒ No abrasive cleansers waxes
- ☒ Never use cleanser, emery cloth or handkerchief which can rub.
- ☒ Never use cleaners containing abrasive cleansers, ammonia, bleach, acids, waxes, alcohol, solvents or other products not recommended for chrome.

3. After cleaning, use rinsing water to clean all cleanser immediately and drying with a soft cotton cloth.

H SPECIAL STATEMENT

The products installation instruction is written in accordance with the latest product information, following the sustainable development strategy of the Company, to improve continually the produce's specification, performance etc., subject to change without notice. (The Company reserves the right to interpret)