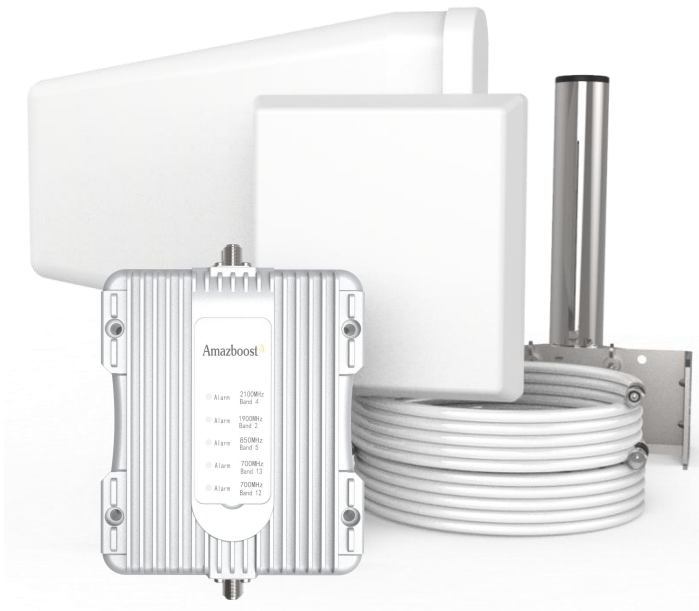




## A2 Cell Phone Signal Booster Manual



Manufactured and Warranted by  
Amazboost Technology Inc.  
[www.amazboost.com](http://www.amazboost.com)

customer service number:

Office (435) 319-6858

Toll Free (877) 579-7878

US: [Support@SolidRFINC.com](mailto:Support@SolidRFINC.com)

Canada: [Support@SolidRF.ca](mailto:Support@SolidRF.ca)

Operational Diagram  
(How It Works)  
Package Contents  
Page 2

Basic Signal Level Knowledge  
Page 3

Preparation  
Page 4 - 7

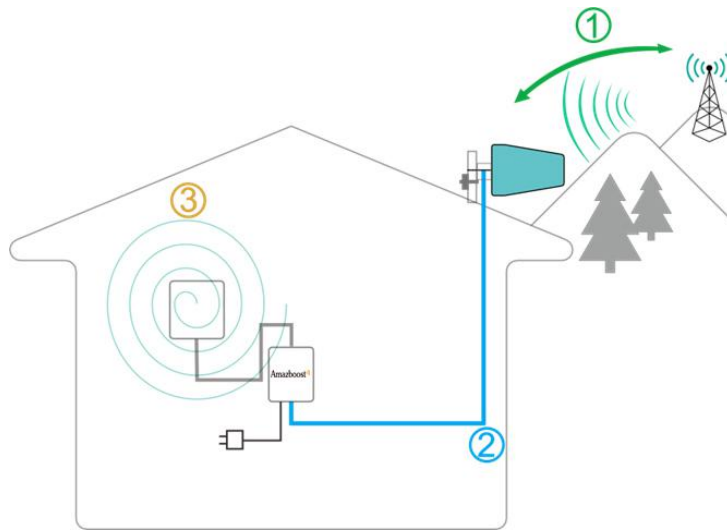
Installation Step By Step  
Page 8 - 16

Trouble Shooting  
Page 17 - 18

Technical Specification  
Warranty Information  
Page 19

Safety Guidelines  
Page 20

# Working Diagram (How It Works)



1. The outdoor antenna catches the signal from the tower.
2. Sends outside signal to the booster through a coax cable.
3. The booster amplifies the signal then rebroadcasts the signal indoors to all mobile devices within range.
4. The system also works in reverse; amplifying outgoing signal back to the tower.

**⚠** The **size** and the coverage area and the **strength** of the boosted signal are directly related to two key factors:

1. Signal strength received by the outdoor unit. So, setting up the outside unit where the signal is the strongest will provide the best results.
2. Distance of **separation** between the outdoor unit and the indoor unit.

## Package Contents

The kit includes the following items:

1. Outdoor Antenna (with mounting kits), Indoor Antenna;
2. Booster;
3. Power supply;
4. 2\*30 ft of RG6 cable, for connecting the outdoor unit and indoor unit;
5. Stainless steel pole (with mounting kits) ;



Outdoor Antenna



Indoor Antenna



Booster



Power supply

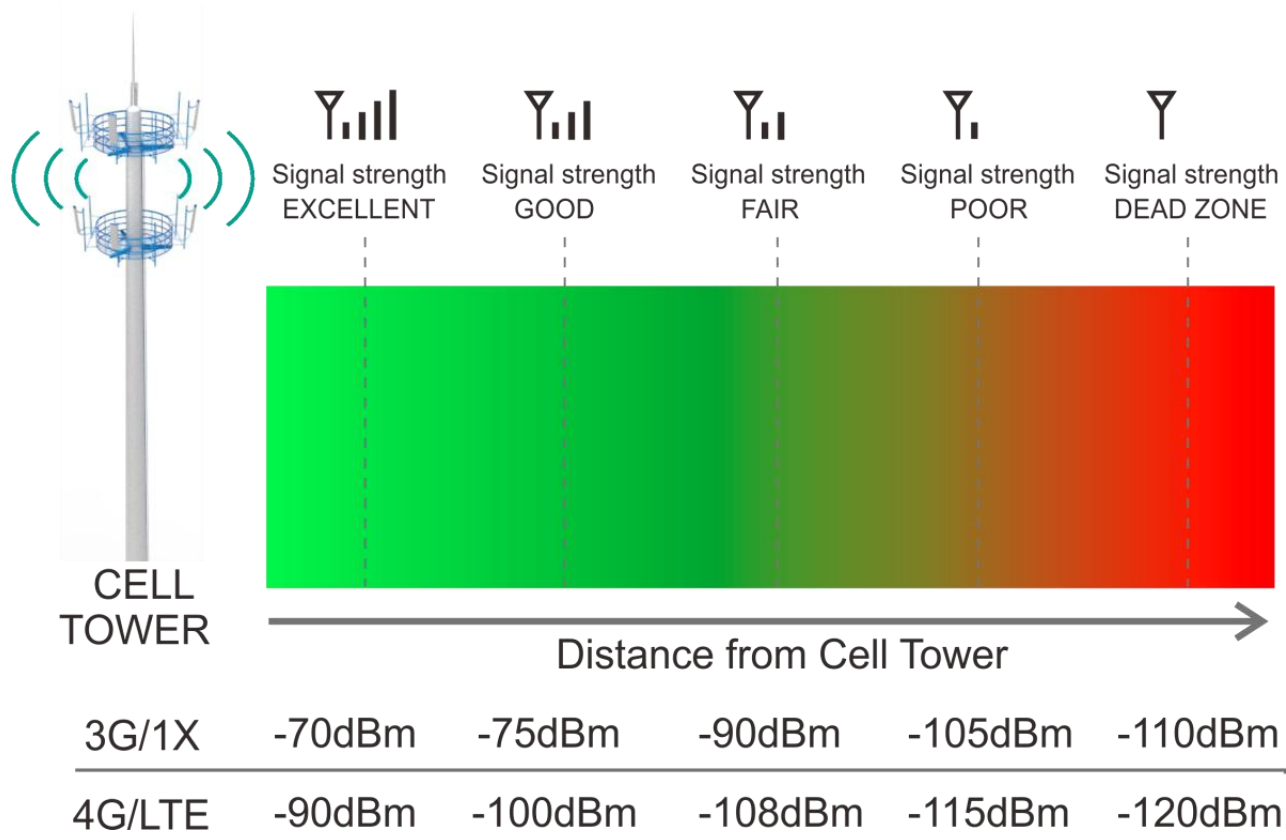


RG6 cable



Stainless steel pole

# Signal transmission loss and power level

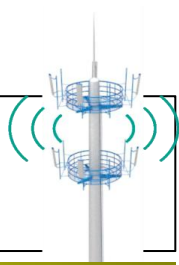


# Coverage area ability

**Note:** FCC regulations limit the amplification of all cell phone boosters in order to prevent damage to the telecommunications infrastructure. Therefore, the maximum coverage area of a booster depends on the original power level of the signal captured by the outdoor unit.

**! Notice:** Not recommended when outdoor signal strength is less than -110dbm(3G/1x) or -120dBm(4G/LTE). The resulting coverage area of the boosted signal will be prohibitively small.

Power level at the outdoor antenna location	Coverage Area (sq. ft.)
Strong (5 bars on the cellphone)	5,000
Medium (3~4 bars on the cellphone)	2,500
Weak (1~2 bars on the cellphone)	700

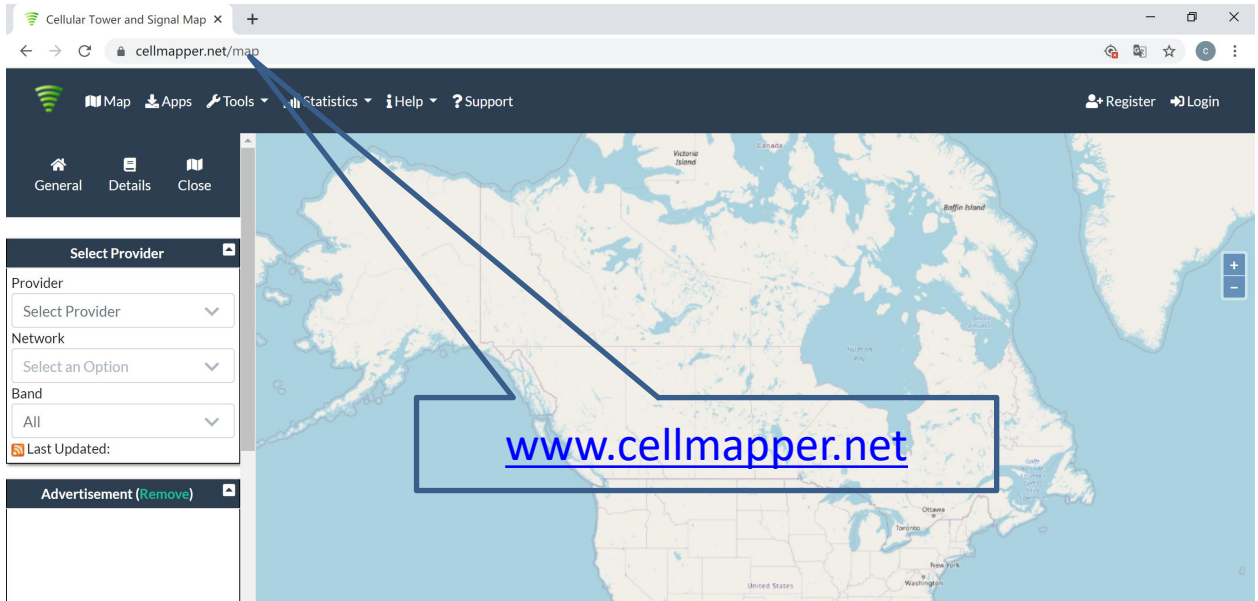


## Find your cell tower nearby!

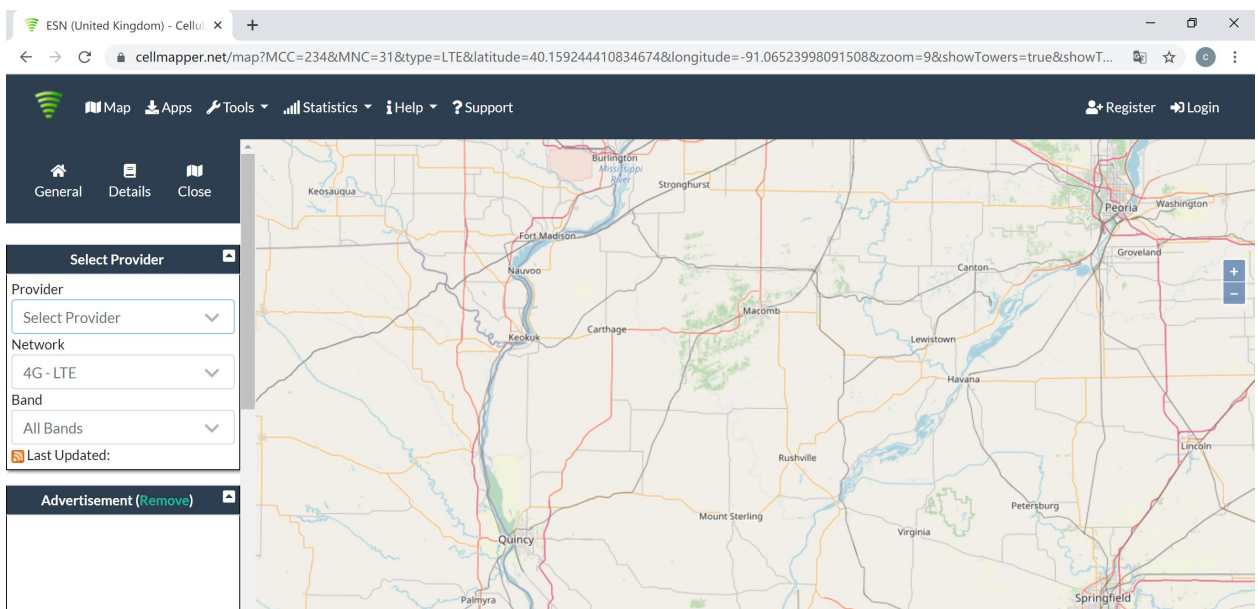
There are a variety of resources available online, here is a third party website recommended. Use it to locate your nearest cell tower: [www.cellmapper.net](http://www.cellmapper.net)

**Note:** This is very important step. If we use the wrong direction, we won't have good result.

## Step 1: Visit website [www.cellmapper.net](http://www.cellmapper.net)



## Step 2: Find your location on the map and zoom in on your area



# Step 3: Select Provider. You will find the cell tower around your house.

ESN (United Kingdom) - Cellul

cellmapper.net/map?MCC=234&MNC=31&type=LTE&latitude=40.159244410834674&longitude=-91.06523998091508&zoom=9&showTowers=true&showT...

Map Apps Tools Statistics Help Support Register Login

General Details Close

Select Provider

Provider

Select Provider

BT OnePhone Limited - 2348

ESN - 23431

UNITED STATES OF AMERICA

**T-Mobile USA - 310260**

AT&T Mobility - 310410

Sprint - 310120

Select Provider

AT&T Mobility (United States)

cellmapper.net/map?MCC=310&MNC=410&type=LTE&latitude=40.19911538655444&longitude=-91.01442821333697&zoom=10&showTowers=true&show...

Map Apps Tools Statistics Help Support Register Login

General Details Close

Select Provider

Provider

AT&T Mobility - 310410

Network

4G - LTE

Band

All Bands

Last Updated:

Advertisement (Remove)

eNB ID 293448 Bands 2

eNB ID 293442 Bands 2

eNB ID 294772 Bands 2,12

eNB ID 215497 Bands 2,4,12,17,30,66

eNB ID 215491 Bands 12,17

eNB ID 215490 Bands 2,12

eNB ID 293445 Bands 2

eNB ID 291415

eNB ID 293633 Bands 12

eNB ID 241643 Bands 4,6

eNB ID 215171 Bands 4,12,14,17

eNB ID 215045 Bands 2

eNB ID 215207 Bands 2,17

eNB ID 215891 Bands 2,5,12

eNB ID 215105 Bands 2,4,12,66

eNB ID 215180 Bands 4,12

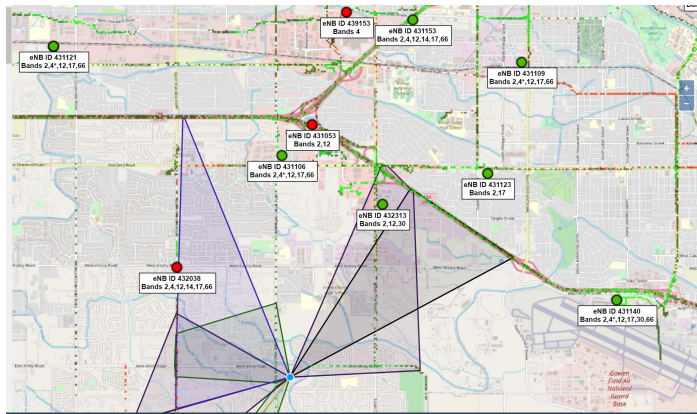
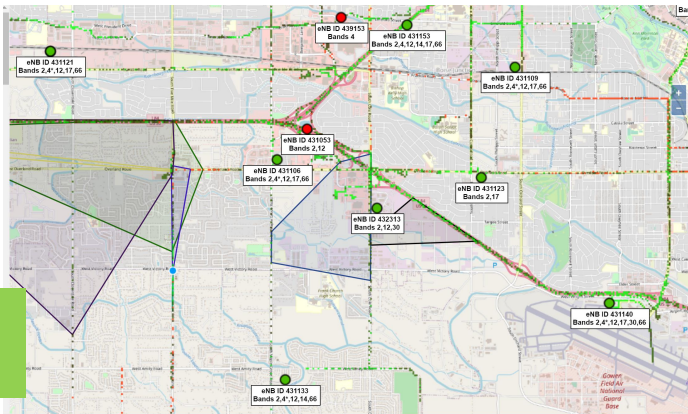
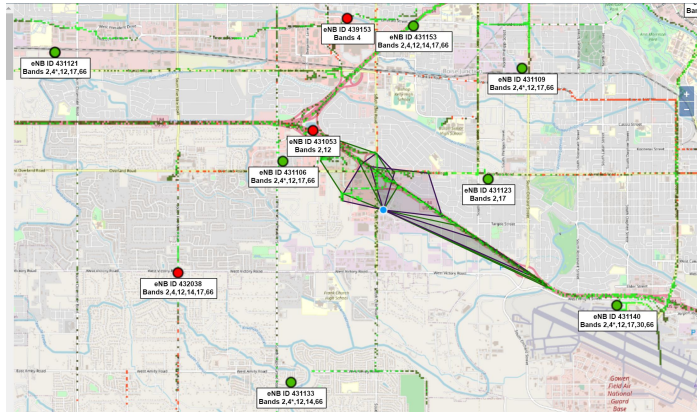
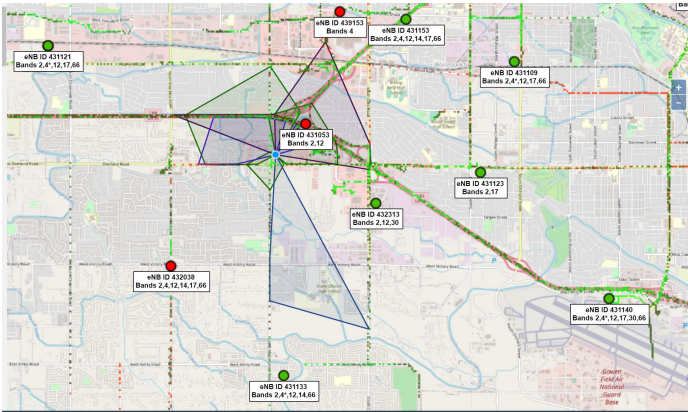
eNB ID 241631 Bands 4,6

eNB ID 215011 Bands 4,12

eNB ID 215245 Bands 2,4,12,14,66

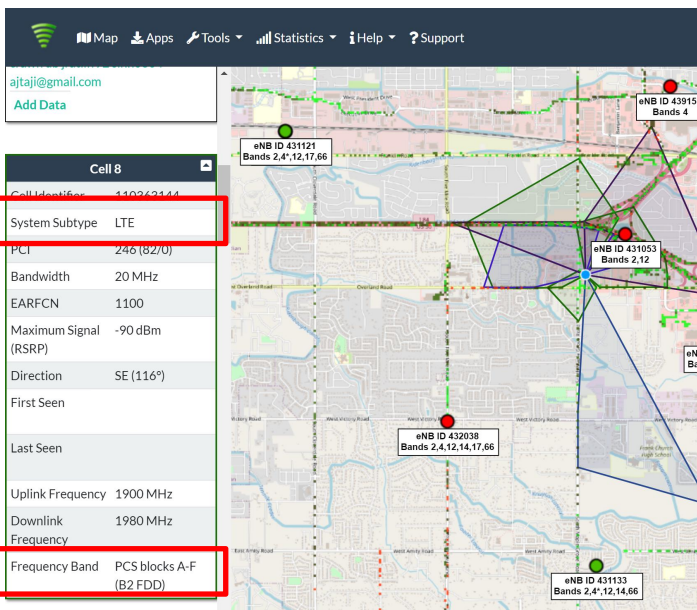
eNB ID 215139 Bands 4,12

# Step 4: Find your cell tower



Click the red or green dot on the map that represents the base station, and the detailed information of the base station will be displayed.

- The first important information, you can see from the above four pictures, the coverage area (shaded part) of each base station is different. You have to find a base station with signal coverage to your house, or the coverage direction is facing you, and the coverage area is closest to you.



- The second important information, you can scroll the information content on the left to find the specific carrier information of this base station, including the communication standard and frequency band. Please reference the left picture, "LTE" and "B2 FDD" (Band 2, FDD).

## Find The dBm Reading On Your Phone

Having an accurate measurement of signal strength in decibels (dBm) is crucial when installing your system. Decibels accurately measure the signal strength you are receiving.

**Note:** Turn off your cell phone's WiFi to ensure you are checking the cellular connection. The dBm reading will be refreshed every 30-60 seconds. Want faster results? Once you have a reading, turn on airplane mode. Wait 15 seconds. Turn off airplane mode. The signal strength reading is refreshed.

**iPhone:** dial \*3001#12345#\* then press call

The image shows the iPhone dial pad with the number \*3001#12345#\* entered. A blue arrow points from the dial pad to the 'Serving Cell Meas' menu option in the 'Serving Cell Info' screen.

sel_plmn_mcc	302
ul_bw	100
sel_plmn_mnc	220
timestamp	2020-07-07 14:22:57 MDT
phy_cell_id	6
freq_band_ind	2
dl_bw	100
ul_freq	18900
num_mnc_digits	
dl_freq	

**Band number** points to the 'freq\_band\_ind' value of 2.

rsrp0	-107
rsrq0	-25
sinr0	10.0
rsrp1	-107
rsrq1	-27

**Receive level dBm** points to the 'rsrp0' value of -107.

**Android:** download third part APP-LTE Discovery

The image shows the LTE Discovery app interface. A blue bar at the top contains 'DISCOVER', 'SIGNALS', and 'MAP'. Below this, the text 'Cell radio status: Connected' is displayed. A signal strength bar is shown next to the text 'Band: 12'. Below the band information, the text 'LTE: -98.0 dBm' is displayed. A signal strength bar is shown next to the text 'GSM: -113.0 dBm'. A blue box highlights the 'Band: 12' text, and a blue box highlights the 'LTE: -98.0 dBm' text.

**Band number** points to the 'Band: 12' text.

**Receive level dBm** points to the 'LTE: -98.0 dBm' text.

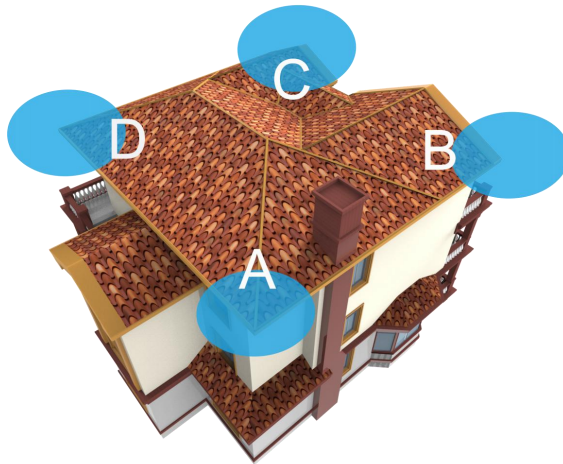
We **STRONGLY** recommend doing a test installation before finalizing the installation. Doing a test installation of your cell phone booster ensures that you will get the optimal performance from your system.

### Step1: Select the Location for the Outside Unit

**Note:**This is the most critical step and will determine the overall performance of the booster system.

1. Generally, the strongest signal will be located on the side of your home facing the nearest cell tower. Keep in mind, the signal strength at ground level may be different from the signal strength at or above the roofline due to obstructions (trees, other buildings, etc.) that block the incoming signal. In most situations, the strongest signal is found about 25 feet above the ground on the side of your home facing the nearest cell tower.
2. The most ideal installation position is the corner of the building, choose the one facing your cell tower.

**Four corner of the building are the most ideal position**



**Choose the one facing your cell tower**





## Step 2: Temporarily Mount the Outside Antenna

In addition to the four corners of the building, the chimney and the pole above the roof can also be selected. As long as the installation distance between indoor and outdoor antennas is maintained enough, satisfactory results can also be achieved.

Use one of the three options to mount the outside antenna on your roof on the side of the house with the strongest signal.

The height of the outside antenna should never exceed the highest point of your house. This is a precaution against damage and safety concerns caused by lightning strikes to the outside unit.

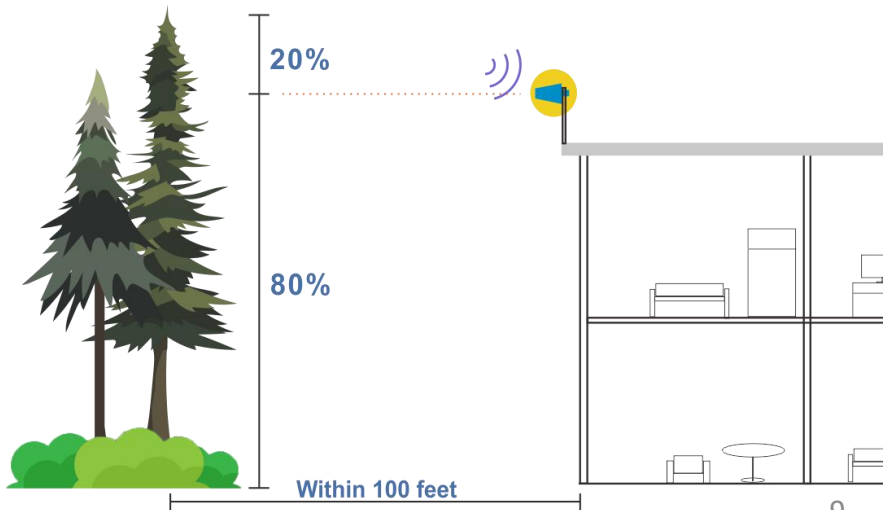


### Caution

Trees will greatly attenuate wireless signals. If there are tall trees within 100 feet of the house. At the same time you can't find a stable signal above 3 bars, the outdoor antenna needs to be erected 60%(at least) to 80%(best) of the tree height. **Never exceed the trees!**

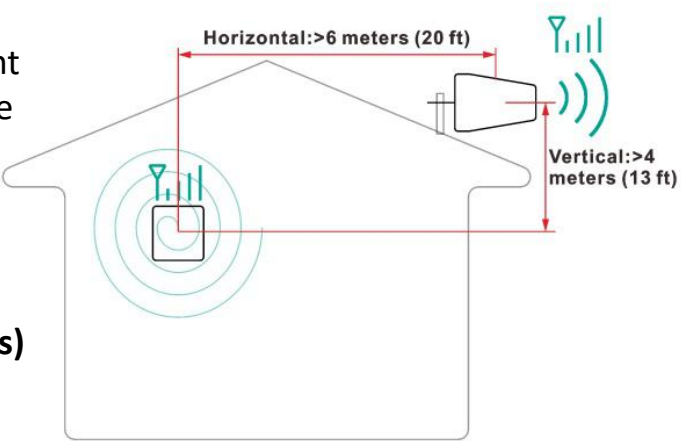
But according to FCC regulations, outdoor antenna height cannot exceed 30 feet.

At the same time, if the antenna exceeds the roof, please pay attention to lightning protection measures.



## Step3: Select the Location for the Inside Antenna

In order to achieve the best signal coverage effect, there is a certain distance requirement between the indoor and outdoor units. Make sure the inside and outside units are facing away from each other.



**Minimum Required Separation Distance Between Indoor and Outdoor Antenna:**  
**Straight line distance over 30 feet(10 meters)**  
 or  
**20 ft (6 meters) horizontal distance**  
**13 ft (4 meters) vertical distance(As far as possible)**

## Measure the Signal Strength Inside your Home

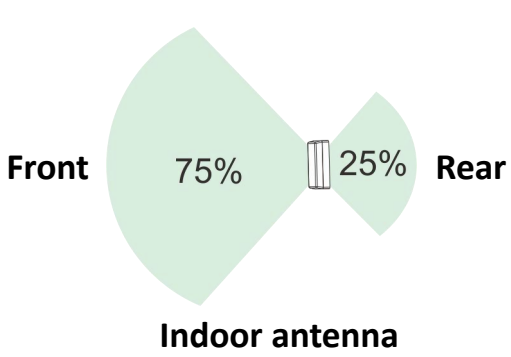
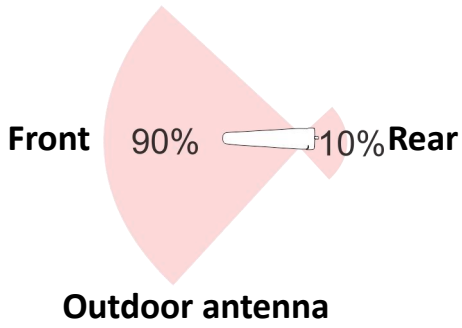
- Test your current signal strength in multiple locations throughout the home
- Record the current signal strength in the table provided for reference



No	Location	Record(dBm)
1		
2		
3		
4		

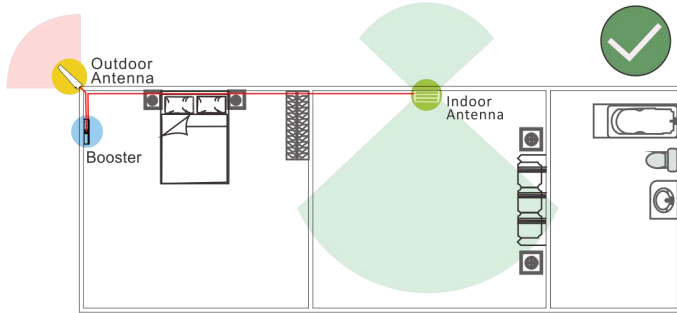
## Top view of antenna beam shape and energy distribution

- The radiation beam angle of indoor and outdoor antennas is about 90 degrees;
- In addition to signal radiation in front of the antenna, there is also energy radiation behind the antenna;

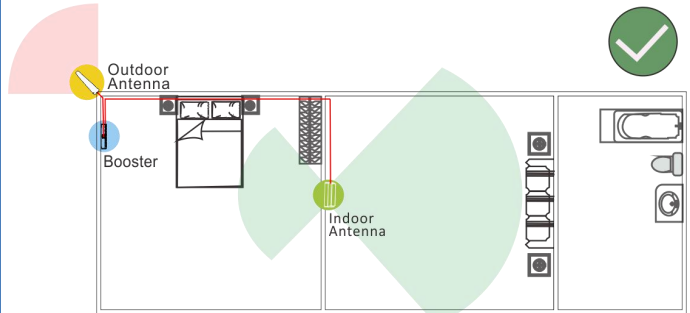


# Antenna mutual position( top view)

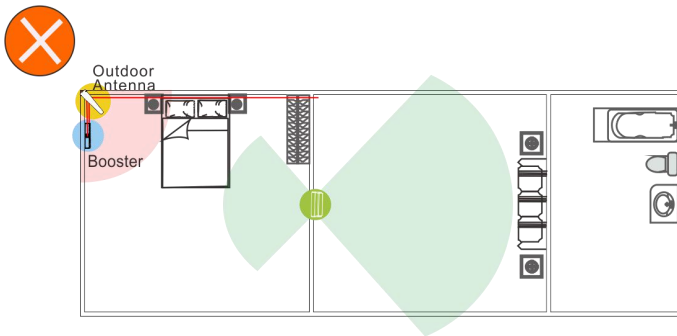
Avoid cross antenna beams( the best solution)



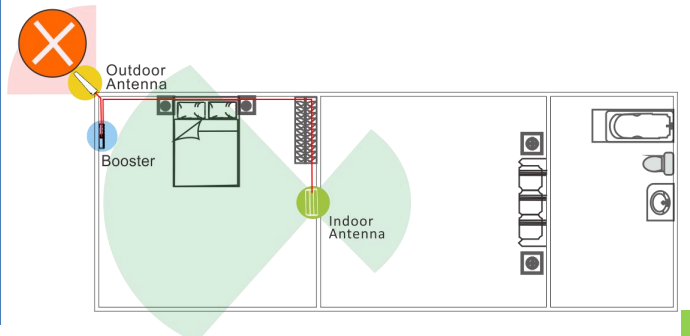
Ensure the distance, allow the antenna to cross the rear beam( good solution)



Do not face the outdoor antenna to the indoor antenna



Do not face the indoor antenna to the outdoor antenna



The indoor antenna is a panel directional antenna. Choosing a location facing all over your home will help to maximize your coverage area.



## Step4: Connect the System

1. Connect the outside antenna to the 30 feet RG6 cable, fix the connector(In order to avoid internal damage of the antenna connector due to gravity or pulling the cable)



Secure the cable near the antenna to prevent cable damage caused by wind shaking

2. Connect the outside antenna to the "OUTSIDE" port of booster.



3. Connect the 15 ft RG6 cable to the booster at the "INSIDE" port.



4. Connect the other end of the coax cables to the panel antennas.



6. Plug in the power adaptor and connect it to the nearest power outlet (surge protector recommended).



## Step5: Evaluate the Effects

- Now that the booster is up-and-running, re-test the signal strength inside your home at the same locations from Step 1. If the number is higher (dBm reading is closer to zero) than the original reading, your booster is working.
- If your signal is not stronger, check the LED lights on the booster and refer to the “Quick Troubleshooting” section at the end of the manual.



No	Location	Record(dBm)
1		
2		
3		
4		

### Decibel Gain vs. Power Amplification/Distance/Coverage area

Decibel Gain	Power Amplification (times)	Distance Enhance (times)	Coverage Enhance (times)
6	4	2	4
10	10	3	9
20	100	8	64
30	1000	32	900

**Note:** Decibel Gain and Power Amplification may vary depending on the specifics of your situation. Different building materials and other obstructions in your home will result in different outcomes.

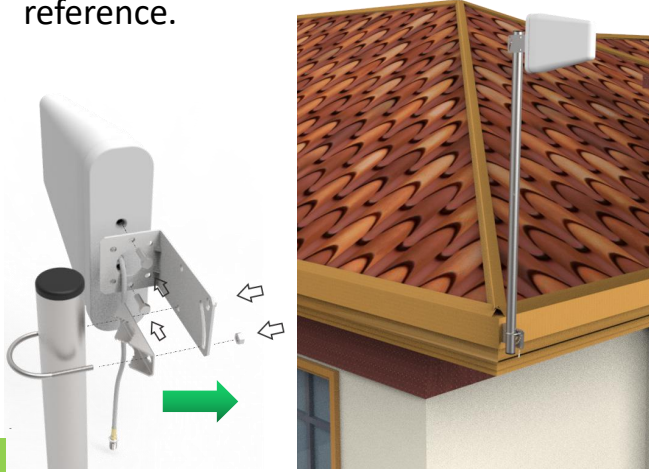
# Step6: Finalizing Outdoor Antenna Installation

Once you have tested the performance of the signal booster and made all necessary adjustments, it's time to finalize the installation.

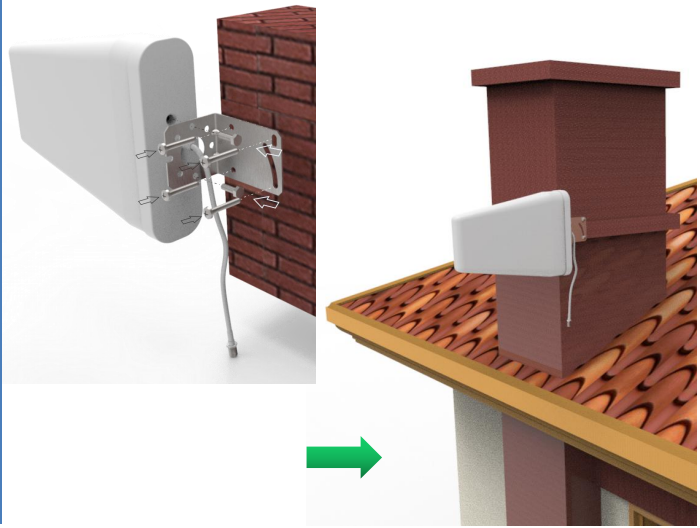
## Outdoor Antenna Installation

Make sure that the outside unit is mounted at least 3 feet away from any windows.

**Option A : Outside Roof Pole Mount (Best Choice)** Use an existing pole to mount the outdoor unit in the optimal signal location. Use the picture for reference.




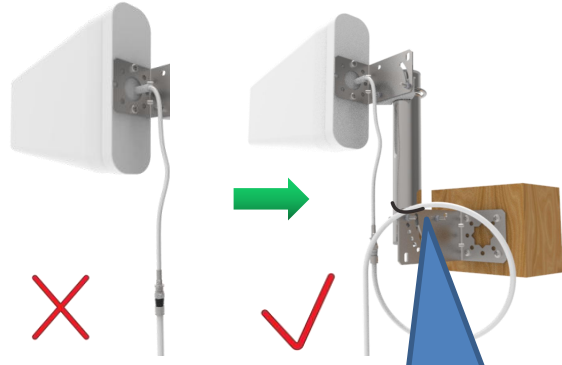
**Option B : Mounting on the side of the chimney(Second Choice).**



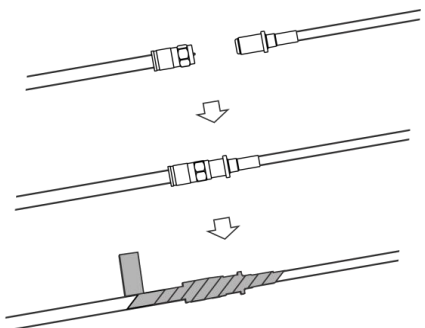
## Seal and Fix the Connector

In particular, cables for outdoor antenna locations must be fixed. Otherwise, the internal wires of the cable will be pulled off after the wind has been shaken for a long time. The amplifier will not receive the signal and the system will fail completely.

 As shown in the figure, it is best to have the cable around a single turn shape and then fix it.




Secure the cable to prevent cable damage caused by wind shaking

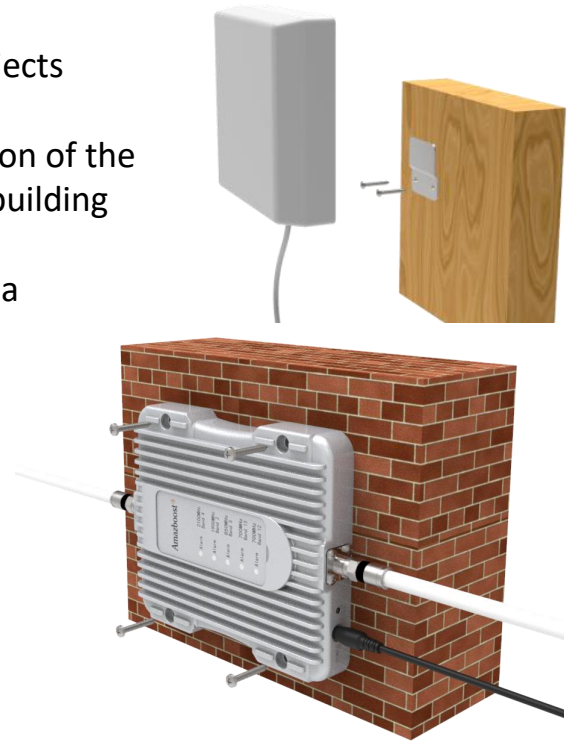


Long-term rain or moisture erosion can damage the electrical characteristics of outdoor antenna connectors. Make sure connectors are well screwed in and seal the connectors with glued tape.

## Step8: Finalizing Indoor Installation

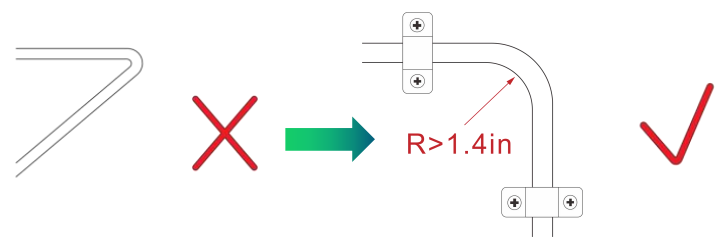
- a. Choose right position for the indoor antenna
  - 20 cm away from facing any other metallic objects
  - 50 cm away from any windows
  - The inside antenna should be facing the location of the signal dead zone/weak signal area inside the building
- b. Mount the inside antenna
- c. Connect the inside cable to the inside antenna
- d. Mount the booster
  - Choose a ventilated and dry place
  - Keep away from heat
  - Don't cover booster

 **Booster will about 30 degrees Fahrenheit higher than the ambient temperature, which is a normal phenomenon.**



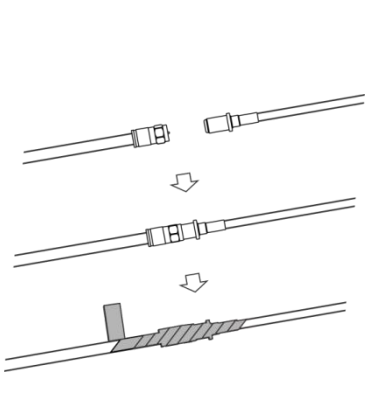
## Step9: Finalizing and Securing Cable Route

- Find the best route for the cable. Follow the lines of your home to hide the cable in eaves or between the soffit and the exterior wall.
- If needed, cable clips can be purchased at most hardware stores.
- Whether the cable is properly secured is very important for the entire system. In most cases, the customer found that the booster did not work after working for a period of time because the cable was not installed securely.
- Carefully arrange the cable along the outside of the building and ensure that there are no folds or kinks. Fix the cable at each corner



## Caution

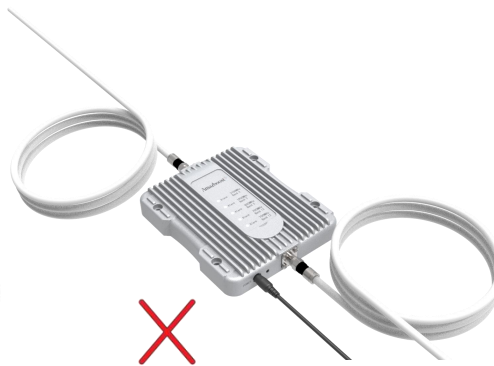
### Seal and Fix the Connector



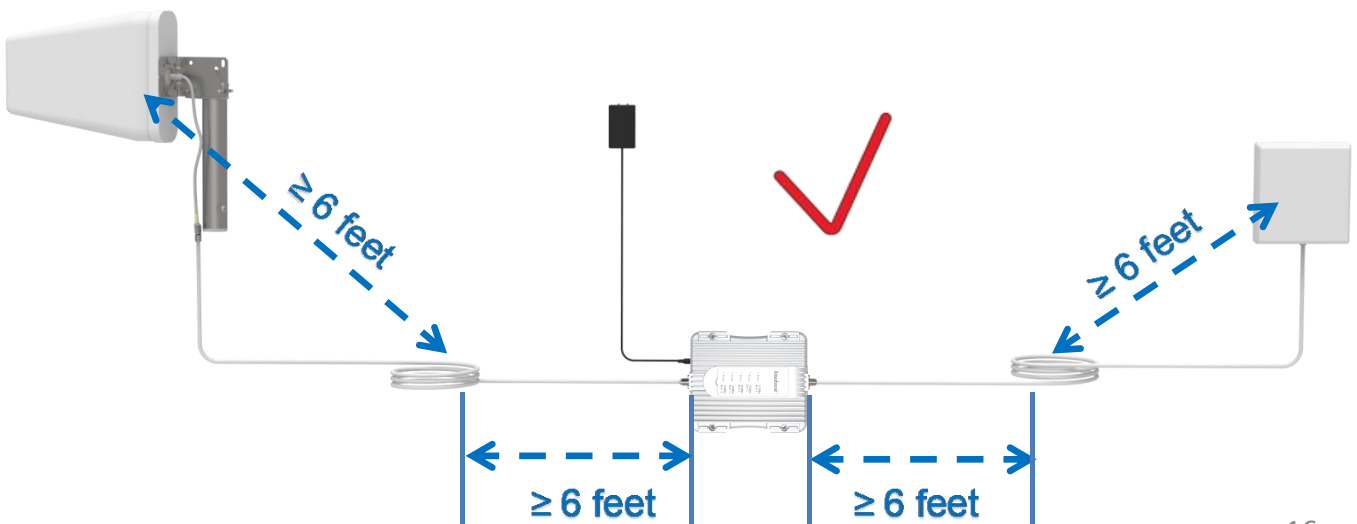
Secure the cable near the antenna to prevent cable damage caused by wind shaking

### Properly Handle Excess Cables

If the coiled cable is too close to the antenna or booster, the system will be unstable. Make sure these coiled cables are more than 6 feet (2 meters) from the antenna or booster



Make sure these excess coiled cables are more than 6 feet (2 meters) from the antenna or booster can make your system work more stable.



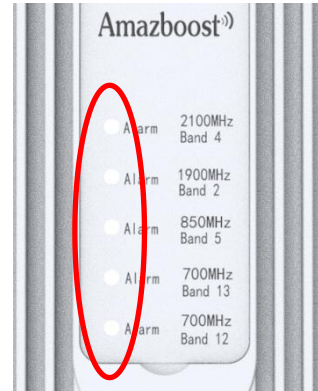


## Correct functioning:

- Power Light should be solid green
- The indicator light on the front panel indicates the status of the booster. Every time the booster is turned on, all the indicators will turn green for a period of time and then go out. This means that the booster has passed the self-check and is in good condition.



Power Light



Panel State Light

## Trouble Shooting: No Signal Improvement

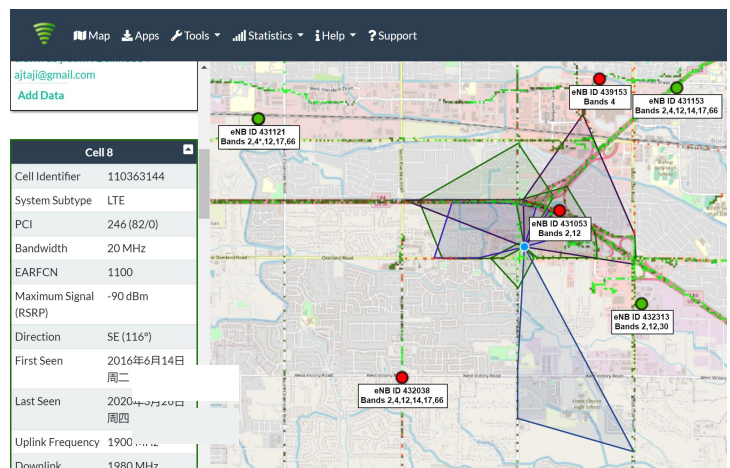
Step 1. Check power. Ensure the indoor unit is plugged in and the LED Power Light is lighting.

Step 2. Check cable connections. Ensure the indoor and outdoor units are securely connected to the coax cable.

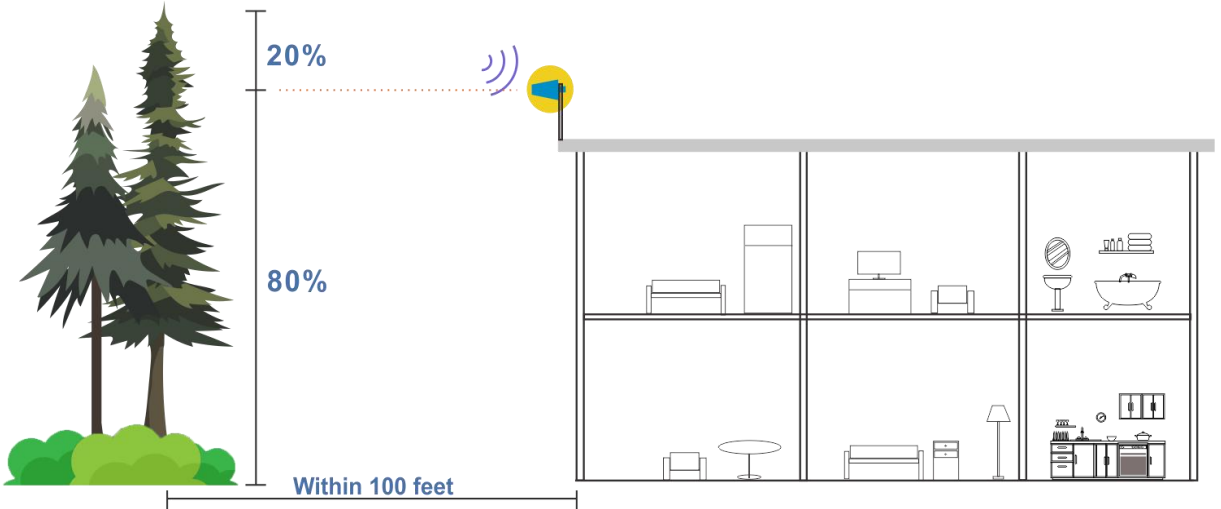
Step 3. Check incoming signal level at outdoor unit position. Usage of a booster is not recommend when the outdoor signal is less than -110dbm(3G/1x) or -120dBm(4G/LTE).



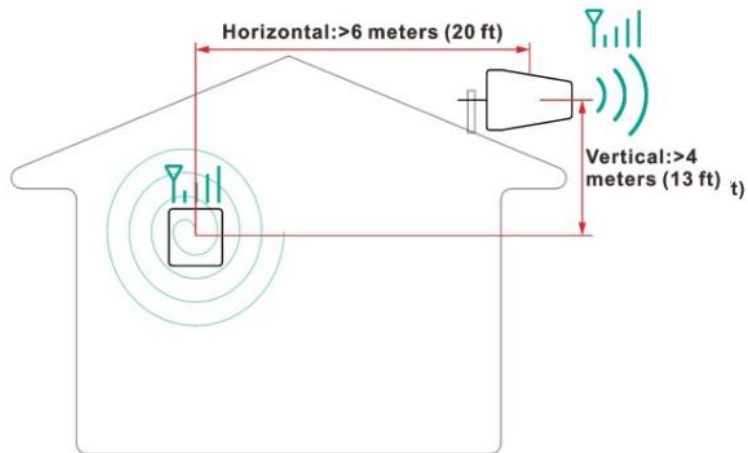
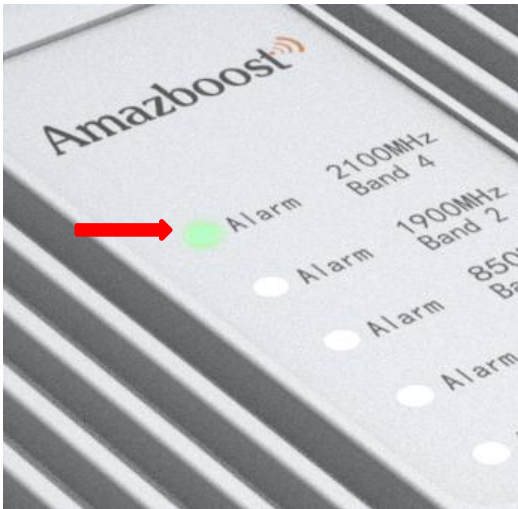
Step 4. Check your outdoor antenna direction is facing the tower which coverage your house



Step 5. Trees will greatly attenuate wireless signals. If there are tall trees within 100 feet of the house. At the same time you can't find a stable signal above 3 bars, the outdoor antenna needs to be erected 60%(at least) to 80%(best) of the tree height. **Never exceed the trees!**



Step 6. If any of the lights on the front panel are flashing in green then off/continue flashing/solid green, it means that self oscillation is occurring. You must switch off the booster and check the outside and inside antennas' separation immediately. Make sure that the Minimum Separation Requirements have been met. Make sure that the outside antenna is not pointed towards the inside antenna.



**Minimum Required Separation Distance Between Indoor and Outdoor Antenna:**  
**Straight line distance over 30 feet(10 meters)**  
or  
**20 ft (6 meters) horizontal distance**  
**13 ft (4 meters) vertical distance(As far as possible)**

Frequency (MHz)		LTE (band 12)	LTE (band 13)	Cellular (band5)	PCS (band 25/2)	AWS (band 4)
	Uplink	698-716	776-787	824-849	1850-1915	1710-1755
	Downlink	728-746	746-757	869-894	1930-1995	2110-2155
Gain	Uplink	62	62	62	65	65
	Downlink	65	65	65	68	68
Output power	23dBm(Uplink)/6dBm(Downlink)					
Noise figure	<5dB					
In-band Flatness	<9dB					
Weight	0.65Kg					
EIRP	1W					
Impedance	50 ohm					
Operating temperature	5°F to 140°F (-15°C~60 °C)					
Current	≤1.5A(12V DC)					
Dimension(mm/in)	158*125*25/6.2*4.87*0.98					

## WARRANTY



The Booster is covered under a three-year product warranty for failures or defects that result from craftsmanship and/or materials. Dated proof of purchase should be retained for use in warranty cases. Contact the retailer/reseller directly with any warranty issues, or alternatively contact the manufacturer in cases where the reseller is no longer available to handle warranty claims. In cases where the reseller is unavailable, the product may be returned to the manufacturer at the consumer's expense, with a dated proof of purchase and a return authorization letter which can be attained by contacting Amazboost.

This warranty does not apply to any signal booster components determined by Amazboost to have been subjected to misuse, abuse, neglect, tampering, or mishandling that result in damages to the physical or electronic properties of the product. Refurbished products that have been recertified to conform to product specifications may be used for product replacements.

**DISCLAIMER:** The information provided by Amazboost is believed to be complete and accurate, to the best of our knowledge. However, no responsibility is assumed by Amazboost for any business or personal losses arising from the use of the information herein contained, or for any infringements of patents or other rights of third parties that may result from its use.

## Safety Guidelines

To uphold network protection standards and ensure compliance, all active cellular devices must maintain a separation distance of at least six feet between the inside unit antenna and outside unit antenna and at least four feet of separation distance from the inside unit. Use only the power supply provided in this package. Use of a non-SolidRF product or accessory may result in damage to the equipment or components of the equipment. The inside unit is designed for use in an indoor, temperature-controlled environment (less than 100 degrees Fahrenheit). It is not intended for use in attics or similar locations where temperatures may be in excess of that range.

RF Safety Warning: Any antenna used with this device must be located at least 8 inches from all persons.

### This is a **CONSUMER** device

**BEFORE USE**, you **MUST REGISTER THIS DEVICE** with your wireless provider and have your provider's consent. Most wireless providers consent to the use of signal boosters. Some providers may not consent to the use of this device on their network. If you are unsure, contact your provider.

In Canada, **BEFORE USE** you must meet all requirements set out in ISED CPC-2-1-05. You **MUST** operate this device with approved antennas and cables as specified by the manufacturer. Antennas **MUST** be installed at least 20 cm (8 inches) from (i.e., **MUST NOT** be installed within 20 cm of) any person.

You **MUST** cease operating this device immediately if requested by the FCC (or ISED in Canada) or licensed wireless service provider.

**WARNING.** E911 location information may not be provided or may be inaccurate for calls served by using this device.

This device complies with Part 15 of FCC rules. Operation is subject to two conditions: (1) This device may not cause harmful interference, and (2) this device must accept any interference received, including interference that may cause undesired operation. Changes or modifications not expressly approved by SolidRF could void the authority to operate this equipment.

FOR MORE INFORMATION ON REGISTERING YOUR SIGNAL BOOSTER WITH YOUR WIRELESS PROVIDER, PLEASE SEE BELOW:

Sprint <https://www.t-mobile.com/support/coverage/register-a-signal-booster>  
T-Mobile/MetroPCS: <https://www.t-mobile.com/support/coverage/register-a-signal-booster>  
Verizon Wireless: <https://www.verizon.com/solutions-and-services/accessories/register-signal-booster/>  
AT&T: <https://securec45.securewebsession.com/attsignalbooster.com/>  
U.S. Cellular: <https://www.uscellular.com/support/fcc-booster-registration>

If you have any questions or concerns when installing or operating your cell phone booster, please email us at

US: **Support@SolidRFINC.com**

Canada: **Support@SolidRF.ca**

Or call our customer service number

Office **(435) 319-6858**

Toll Free **(877) 579-7878**