

Magician X2

Instructions for quick assembly

CONTENTS

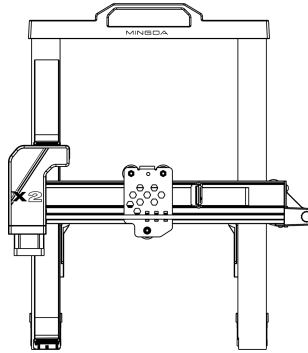
1	Accessories	01
2	Assemble	02
3	Auto-leveling	06
4	Preheat	07
5	Insert the Filament	08
6	Printing	09
7	Z-offset adjust	10
8	Software Instructions	11

1

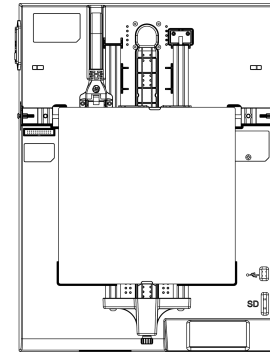
Accessories



Extruder



Gantry



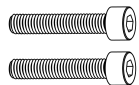
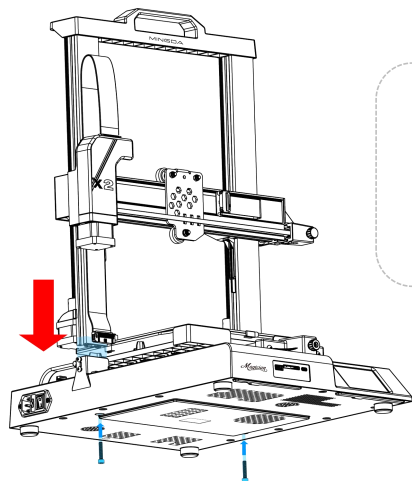
The Main Chassis

Toolkit



2 Assemble

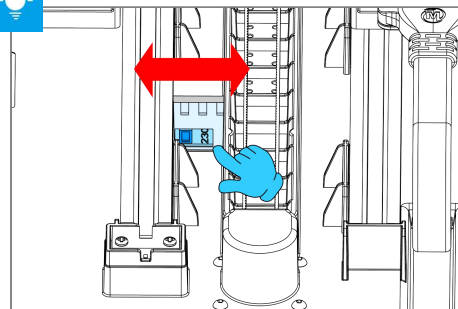
Step 1 Install the gantry



M5*25 (2pcs)

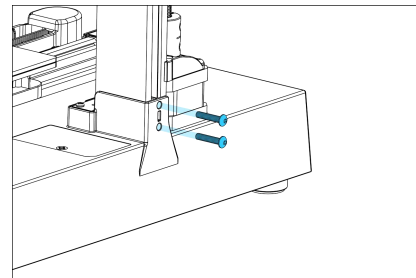
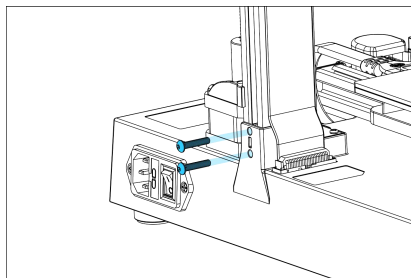
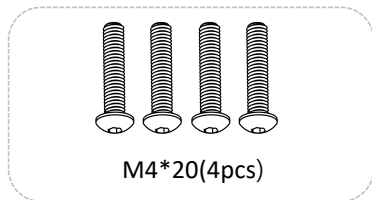


Note: To avoid bending the lead screw and effect the printing model, don't touch or twist the lead screw when take out the gantry from the package.

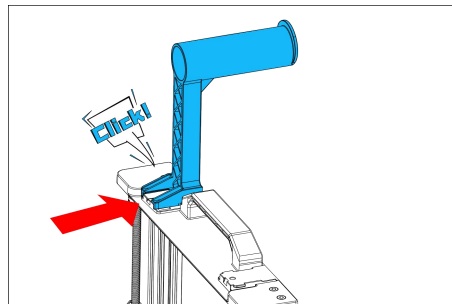
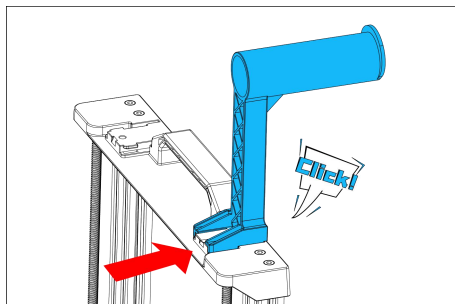


Note: The power supply has been adjusted according to the local voltage. If you need to adjust the voltage, please follow the picture to operate it.

Step 2 Install the fixing plate screw

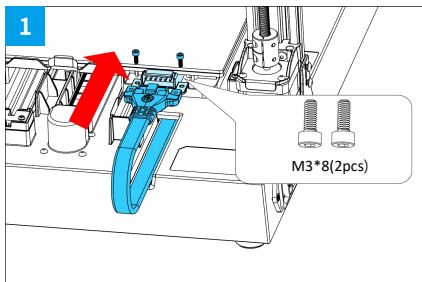


Step 3 Install the Filament Holder

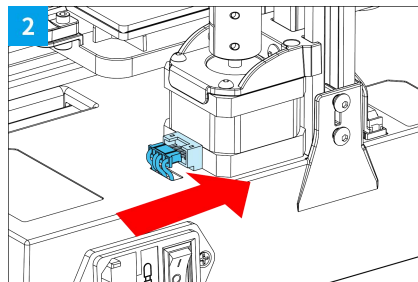


The filament holder can be installed left and right

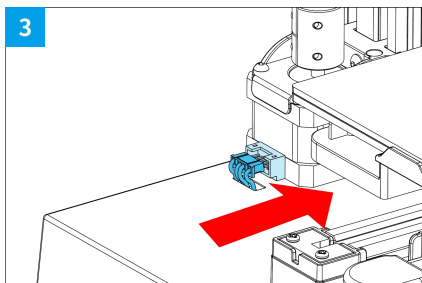
Step 4 Connect Cable



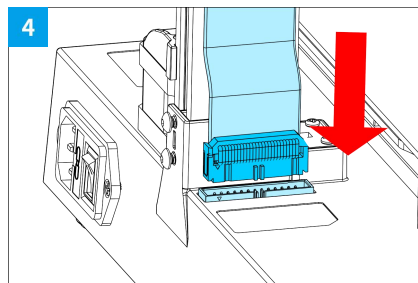
Hotbed cable



Z Motor 1 cable



Z Motor 2 cable

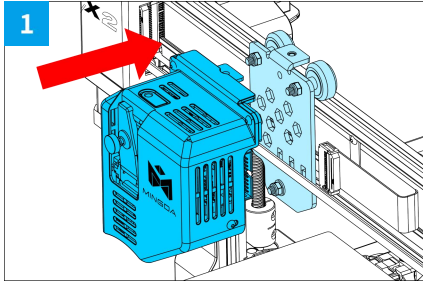


Arranging Wire

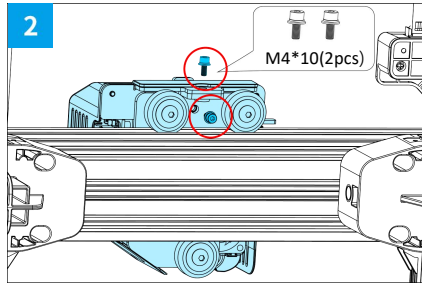


Note: If you find there is a little shaking on extruder, bed or X-axis, don't worry, this is caused by long-term transportation. Please refer to the adjustment video link in the SD card to adjust, it is helpful.

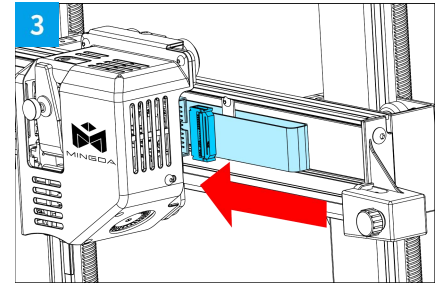
Step 5 Install the Extruder



1. Push the extruder parallel into the support, make sure the screw holes on the top of the extruder are aligned with the screw holes on the support.

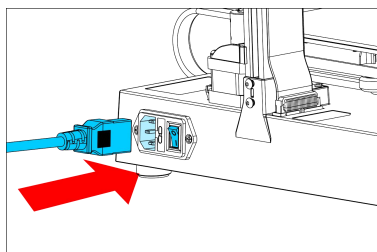


2. Use M4*10 screws to fix the extruder on the support.

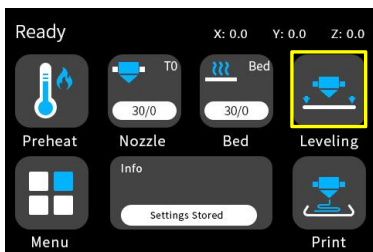


3. Connect the ribbon cable to the port on the right side of the extruder.

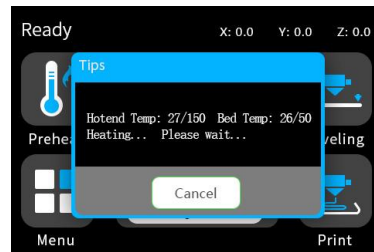
3 Auto-leveling



Plug in the cable and turn on the power



Click "Leveling" on main interface

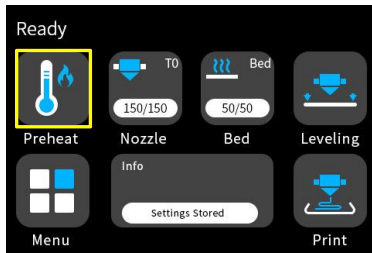


The printer will start auto-leveling after preheat.

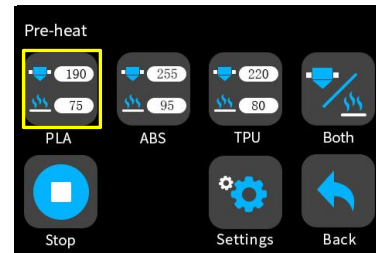


Nota: le informazioni sull'interfaccia utente sono solo per riferimento, l'interfaccia utente effettiva potrebbe essere diversa.

4 Preheat



Click “preheat” on the main interface

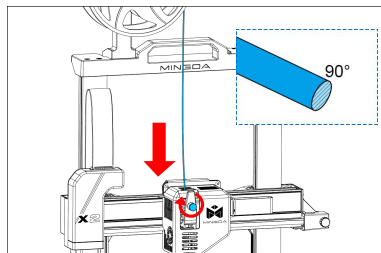


According to your filament, select appropriate settings

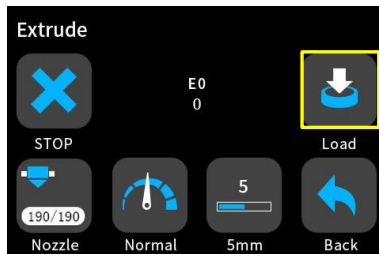


Nota: le informazioni sull'interfaccia utente sono solo per riferimento, l'interfaccia utente effettiva potrebbe essere diversa.

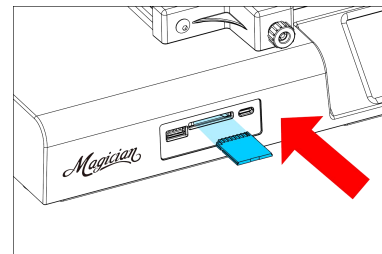
5 Insert the filament



In order to feed filament smoothly, Please keep the end of the filament at 90° .



Click "load" to feed the filament until the filament is out of nozzle.

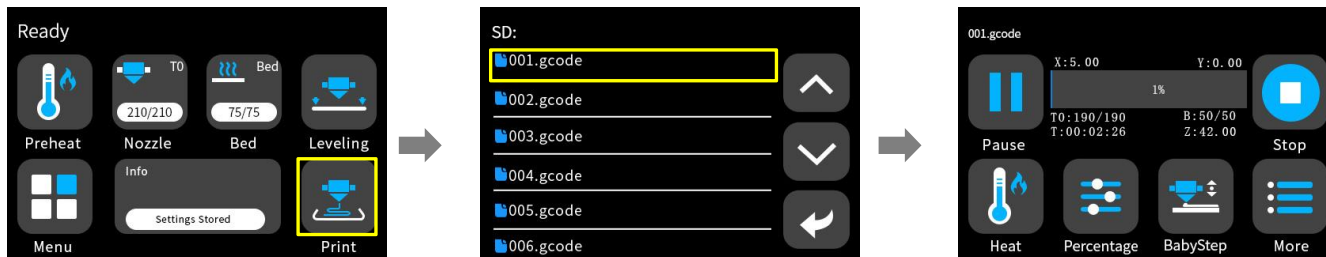


Insert SD card



Nota: le informazioni sull'interfaccia utente sono solo per riferimento, l'interfaccia utente effettiva potrebbe essere diversa.

6 Printing

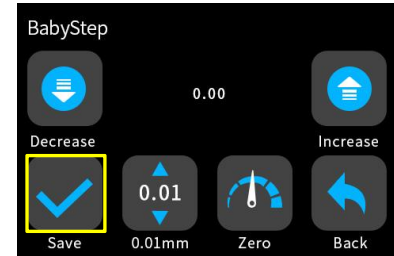
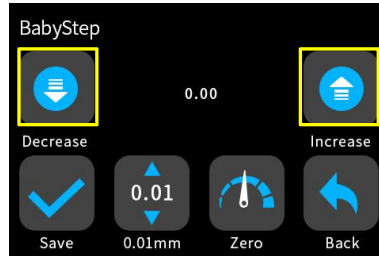
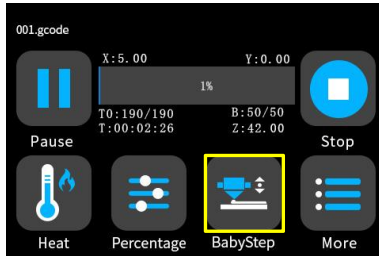


Select a gcode file to print



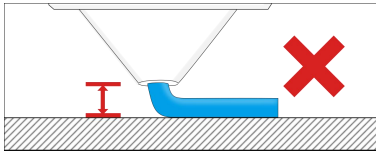
Nota: le informazioni sull'interfaccia utente sono solo per riferimento, l'interfaccia utente effettiva potrebbe essere diversa.

7 Z-offset adjust

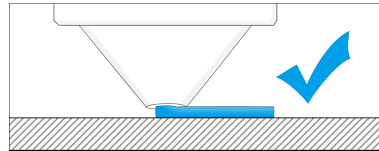


When you start your first printing, adjust the Babystep value according to the adhesion of the filament and the glass platform. Click "Save" to save your setting, and you don't need to adjust the value again next time.

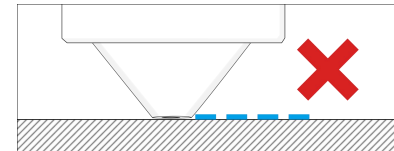
[Note: Z-off set use for the first layer only]



If the distance between the nozzle and the platform is too high, the filament will not easy to stick to the platform. Should click "Decrease" until the distance is proper.



Keep the distance between the nozzle and the hot bed at 0.1mm, the filament will stick to the hot bed evenly



If the distance between the nozzle and the platform is too low, the filament will be not easy to feed out smoothly . Should click "Increase" until the distance is proper.

8

Software Instructions

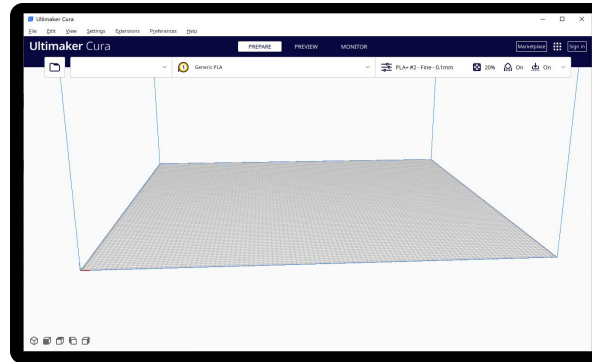
Magician X2 works with a variety of slicing software, such as Cura, Simplify 3D, Repetier-Host, and more. We will introduce CURA_xx.xx in detail, and you will learn how to set the slicing parameters, which will help you become more familiar with the slicing software and print your first model successfully.

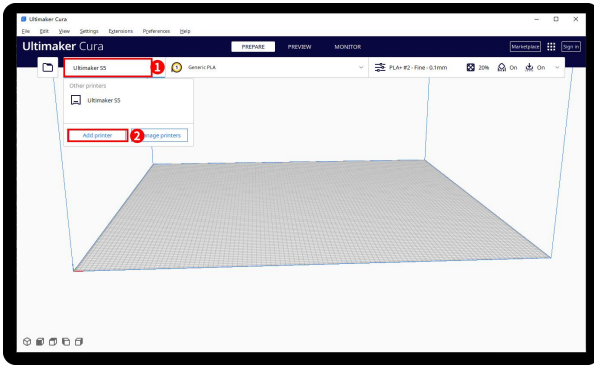
First, you can find the CURA_xx.xx from the SD card, and install it on your computer.

Install CURA

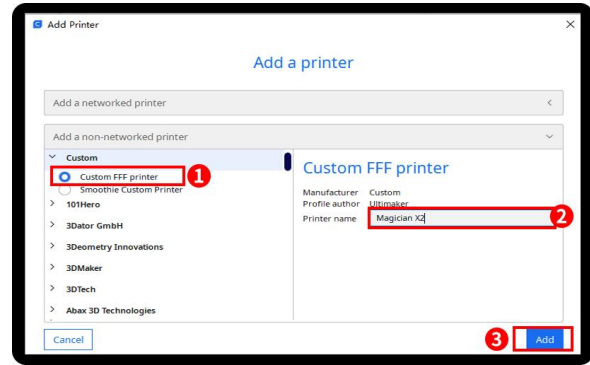
1. Double click Cura_xx.xx.exe to install
2. Install the software by default as follows.

Step 1 Add Printer

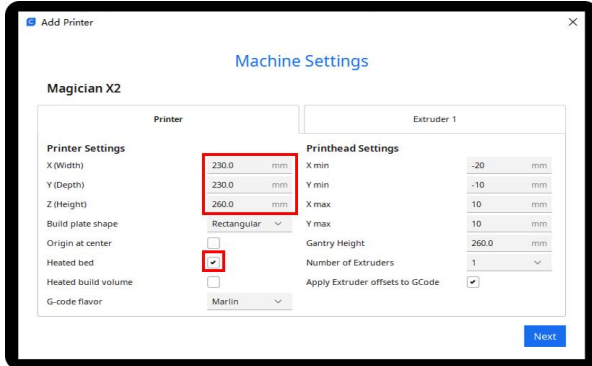




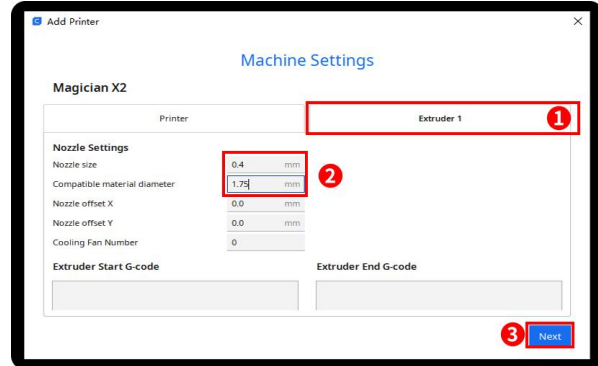
Click Add printer



Choose Custom[Custom FFF printer], insert Printer name for example Magician X2, and Click Add

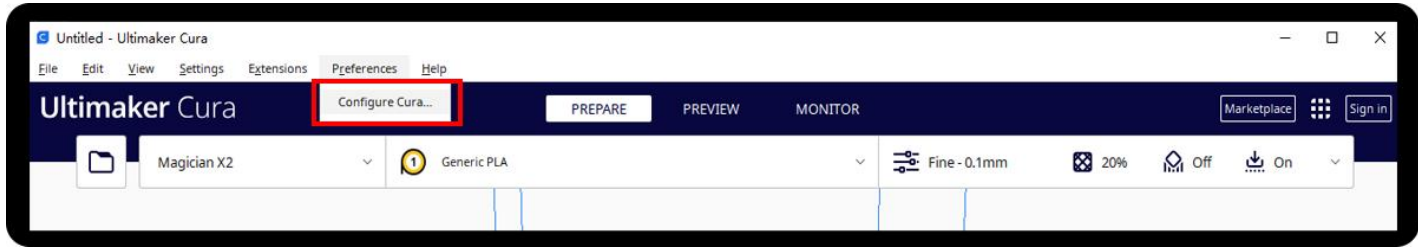


Insert print size, X230 Y230 Z260, select Heated bed

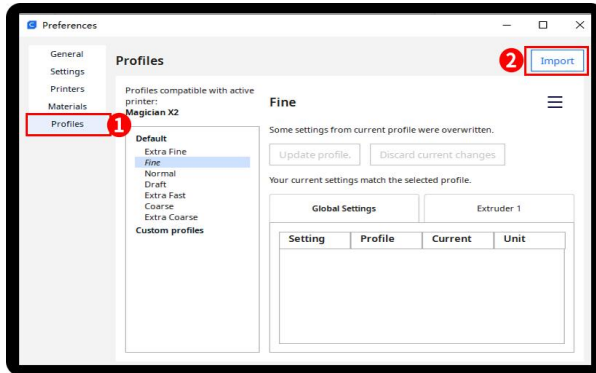


Click Extruder 1, nozzle size 0.4mm, Compatible material diameter 1.75mm, Click next

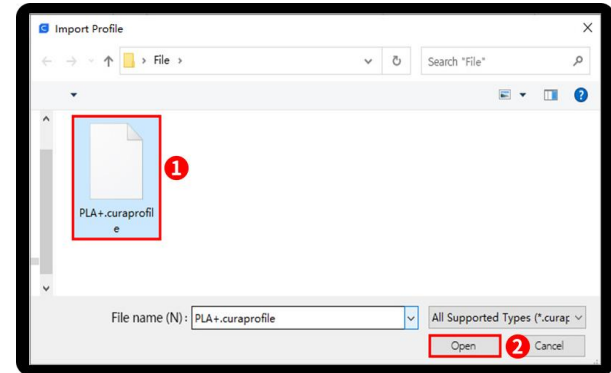
Step 2 Import Configuration file



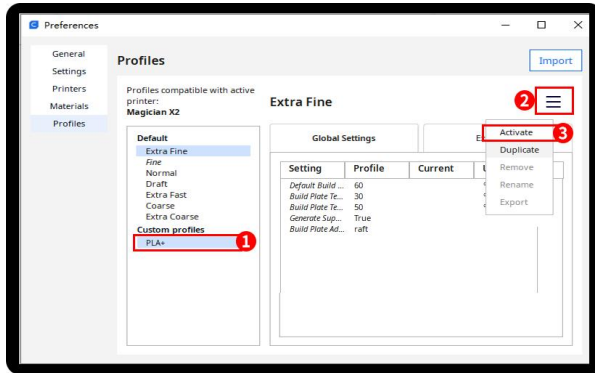
Click Preferences, Configure Cura...



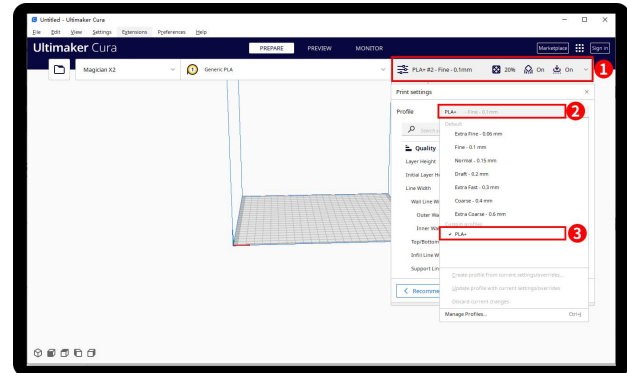
Click Profiles, Import



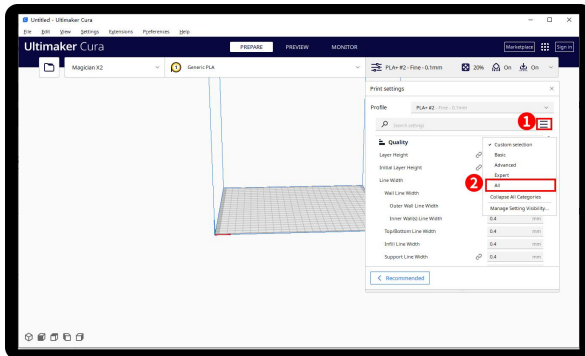
Choose PLA+.curaprofile in SD card



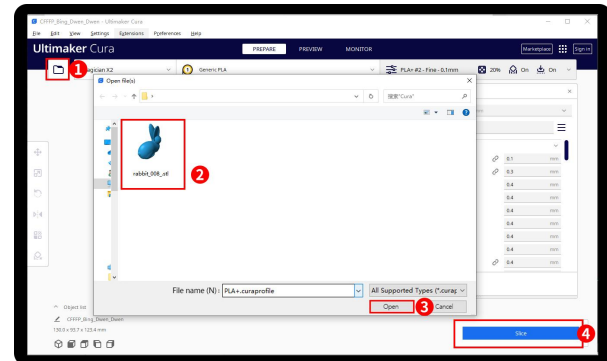
After Import the profile, you will see it below, choose PLA+, and click Activate



On the right side you can see PLA+ active

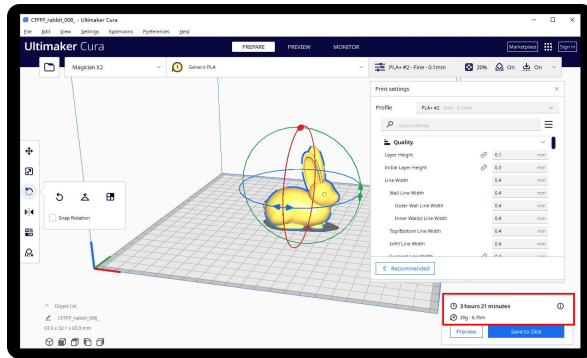


Click here, you can check all the parameter, when you move mouse on it will show the explanation to help you under more clearly

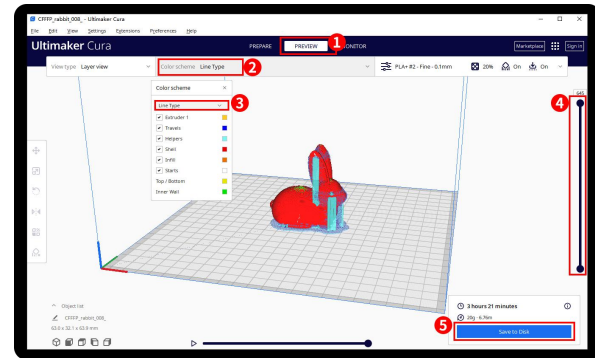


Step 3 Slicing

Click load button you can load a stl file, you can move, rotate, and Zoom the model. Click Slice button.



After slice completed, you can see the time and weight of material that the printing will take;



We suggest you click PREVIEW to check, you can choose line Type and Drag the slider on the right side to see the printing process clearly. After that , you can save it in your SD card to print it out by the printer.

For detailed warranty policy, please visit

http://www.3dmingda.cc/single/request_after_sales_service.html

For support ,please visit our Youtube Channel

https://www.youtube.com/channel/UC6PO64H7CfQtBy4H-fSRM4A?view_as=subscriber

Or you can visit our Facebook group at

<https://www.facebook.com/groups/1018823731846578>

Shenzhen MINGDA Technology Co.,LTD

Email: info@3dmingda.com

www.3dmingda.cc



Support request



Youtube Channel



Facebook Page



Official website