

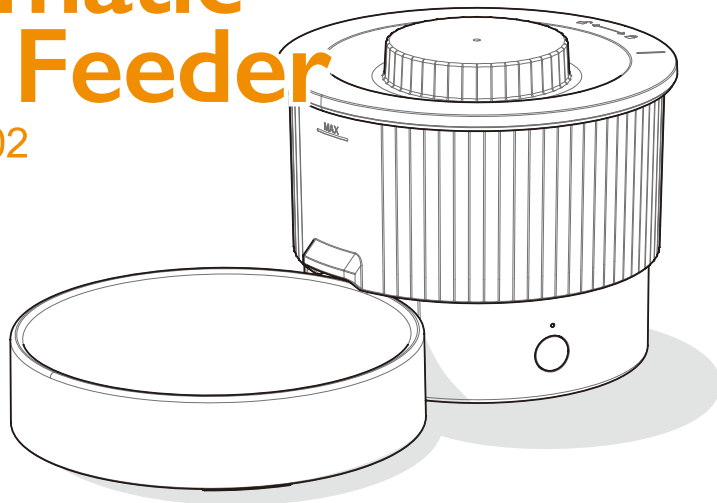


DOG CARE



Automatic Slow Feeder

Model: ASF02



Scan to download app



PurPur



<https://www.dogcare.net>

IMPORTANT SAFETY INSTRUCTIONS

BEFORE USING THIS PRODUCT READ ALL INSTRUCTIONS AND WARNINGS IN THIS MANUAL.

WARNING

To reduce the risk of burns, fire, electric shock, or injury to persons:

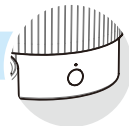
1. This product is not intended for use by, on, or near young children, invalids or infirm persons with reduced physical, sensory, or reasoning capabilities, or lack of experience and knowledge, unless they have been given supervision or instruction concerning use of the product by a person responsible for their safety. To reduce the risk of injury, close supervision is necessary when the product is used near children.
2. Dispose of all packaging materials properly. Some items may be packed in polybags; these bags could cause suffocation; keep away from children and pets.
3. Base unit should NOT be submerged in water at any time, as this may damage its electronic components.
4. Do not place or store the product on wet surfaces or in damp places. Do not place or store the product where it can fall or be pulled into a tub or sink.
5. Place the product on a flat surface. To avoid tripping, please always place the product out of the paths people walk. Do not place the product on or near a stairway.
6. The product is intended for indoor use only. Do not use the product outdoors.
7. The product is intended for use with dogs or cats only. Do not use the product for any purposes other than its intended purpose. Do not use this product on puppies or kittens under 3 months of age and dogs or cats not able to reach the food bowl or with any physical disability.
8. Do not touch the food outlet or the inside of the food hopper when the product is in use.
9. The use of attachments not recommended or sold by the manufacturer may cause an unsafe condition. Do not modify the product. Do not disassemble the product (except for detachable accessories as shown in this manual) as incorrect reassembly may result in an electric shock or fire.
10. When not in use, the product should be unplugged, stored in a safe and dry location, out of reach of children. If the product is not to be used for a long time, remove the batteries. Install new batteries before using it again.
11. The ambient temperature range for operation and charging should be 32 °F to 113 °F.

CAUTION

1. For dry pet food or freeze dried raw pet food only. The product can be adapted to dry food with particle diameter from 3/32" to 5/8". Do not use wet, canned or moist food.
2. Examine this product after installation. Do not plug in if there is water on the power cable. If there is water in the battery compartment, do not insert the batteries.
3. Do not place anything other than dry pet food or freeze dried raw pet food in the food hopper. This may cause abnormal functioning of the product or even injuries to humans or pets.
4. Do not allow pets to chew on or swallow any parts. If you are concerned your pet may chew the power cable, purchase a cord conduit (a hard plastic protector) at any hardware.
5. Some pets have been known to be sensitive to plastic food containers. If your pet shows sign of an allergic reaction to the plastic, please discontinue use until you have consulted with your veterinarian.
6. It is recommended to replace the desiccant every month. If the desiccant is damaged, stop using and replace it. Do not immerse the desiccant in water.
7. Check the operating status of the product regularly and clean the outlet regularly to ensure that it functions normally.
8. Do not lift the product by lid, hopper, or bowl. Lift and carry it using both hands and the base, while keeping product in upright position.
9. In order to prevent tip-overs, it is recommended to place the product at the corner of a room or against a wall, and use the included fixing bracket.

READ AND SAVE THESE INSTRUCTIONS

Quick Start



System requirements:

iPhones with iOS 10.0 or higher or Android smartphone with 9.0 or later, Bluetooth and location permission enabled



Scan to
download app

■ Dual feeding modes



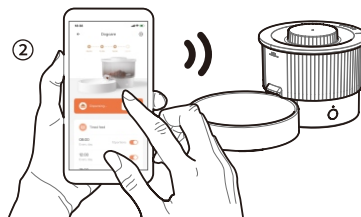
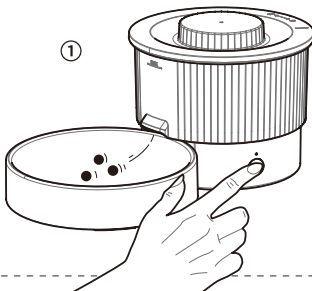
① Immediate Feed Mode

Short press the button to wake up the automatic slow feeder.
Short press the button again and the automatic slow feeder begins to feed.
During feeding, short press the button to stop feeding.



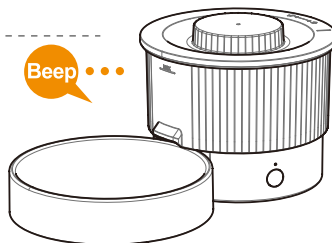
② Scheduled Feed Mode

After connecting your smartphone to the automatic slow feeder via Bluetooth, you can set or modify the feeding schedule on your smartphone.
Search for "PerPur" in your phone's app store and download the app. Locate the app on your Smartphone and follow the onscreen instructions.



■ Low battery alert

If only battery power is used, when the battery power is low, the automatic slow feeder will beep every 5 minutes to remind you to replace the batteries.



Setting up

1. In the box

Dishwasher safe

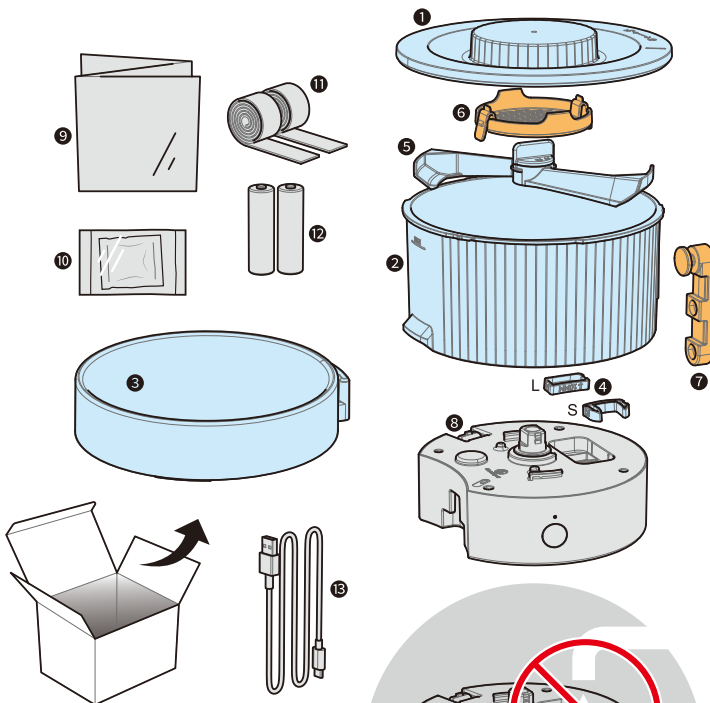
- ① Lid
- ② Food hopper
- ③ Bowl
- ④ Food outlet adjusters (S/L)
- ⑤ Agitator

Hand wash with cold water

- ⑥ Desiccant holder
- ⑦ Fixing bracket

Do not wet

- ⑧ Base
- ⑨ User manual
- ⑩ Desiccant
- ⑪ Hook and loop fasteners x2
- ⑫ AA batteries x2
- ⑬ USB-C cable



2. Clean the washable parts before first use

Use mild detergent and water to clean the lid, desiccant holder, agitator, food hopper, food outlet adjusters (S/L) and bowl. Rinse thoroughly. Let all parts air dry completely before assembling.

Caution: do not wet the base, batteries, and USB-C cable.

3. Dual power supply

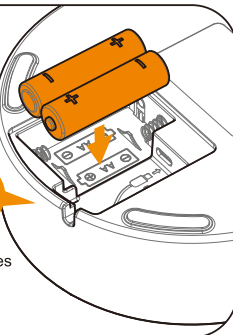
① Batteries

Open the battery compartment located at the bottom of the base and install two AA batteries in the specified direction.

After the batteries are properly installed, the automatic slow feeder will beep.

Note: if not using the feeder for a long time, take out the batteries before storing.

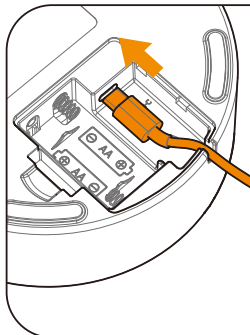
Beep



② USB-C cable

Insert the USB-C cable into the port at the bottom of the base and fix the cable through the slot. Close the battery compartment. Connect the USB-C cable to a 5V/1A adapter or other relevant power sources.

If both power supplies are used, the battery power will be the backup power.



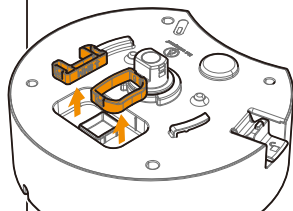
4. Adjust the food outlet

3/8"-5/8"
5/16"-3/8"
3/32"-5/16"

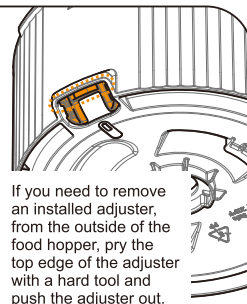
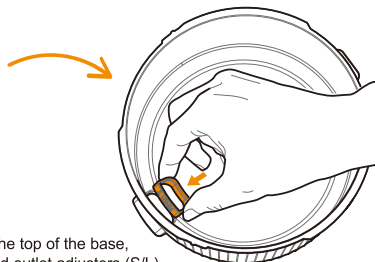
(L)
(S)

Adjust the size of the food outlet according to the diameter of pet food used.

- Diameter 3/8"-5/8": no need to install the food outlet adjusters
- Diameter 5/16"-3/8": install the larger outlet adjuster (L)
- Diameter 3/32"-5/16": install the smaller outlet adjuster (S)

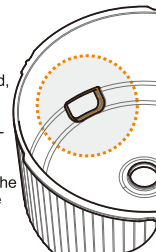


In the groove at the top of the base, there are two food outlet adjusters (S/L). Take out the suitable one and install it at the food outlet from inside the food hopper.

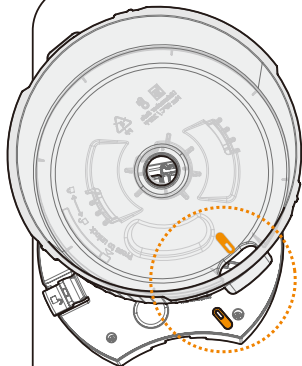


If you need to remove an installed adjuster, from the outside of the food hopper, pry the top edge of the adjuster with a hard tool and push the adjuster out.

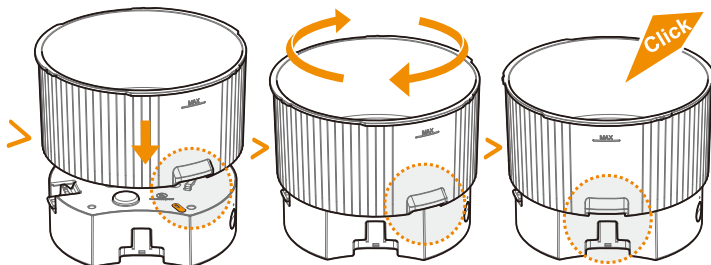
Note: When properly installed, the adjuster should be flush with the inside of the food hopper. Otherwise, it can cause the agitator to malfunction; it may even fall out of the food outlet and into the food hopper.



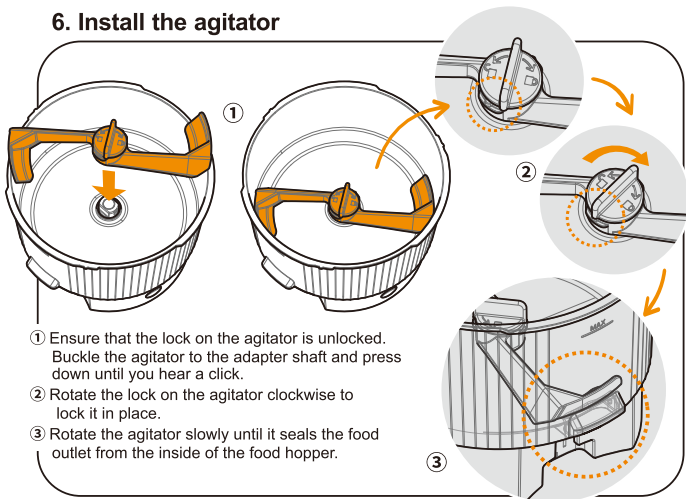
5. Install the food hopper



Place the food hopper above the base, align the alignment mark on the base with the alignment mark on the food hopper, and rotate the food hopper clockwise until you hear a click. The food hopper will be locked with the base after installation. To detach the food hopper, you will need to press the lock.



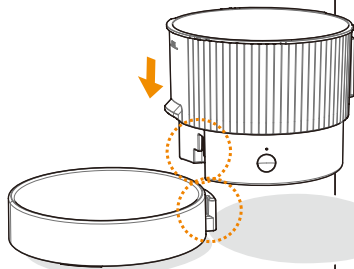
6. Install the agitator



- 1 Ensure that the lock on the agitator is unlocked. Buckle the agitator to the adapter shaft and press down until you hear a click.
- 2 Rotate the lock on the agitator clockwise to lock it in place.
- 3 Rotate the agitator slowly until it seals the food outlet from the inside of the food hopper.

7. Install the bowl

Place the bowl on a flat surface, clamp the base down on the slot of the bowl until they are flush with each other.



8. Add dry food

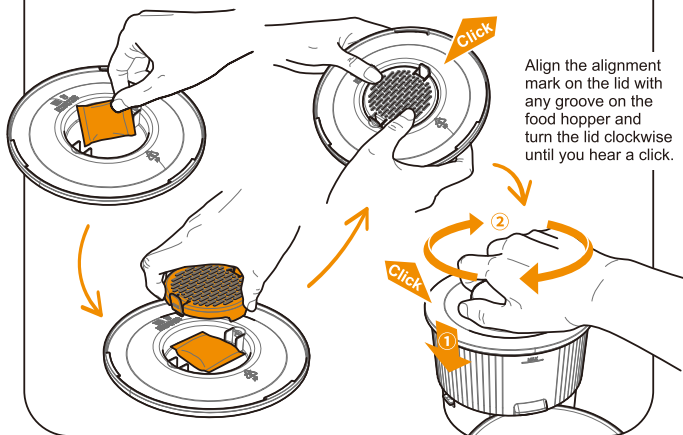
Add your pet's favorite dry food or freeze dried raw food to the food hopper, the height of the food should not exceed the MAX scale line.
The automatic slow feeder can be adapted to dry food with particle diameter from 3/32" to 5/8".

Caution: do not use wet, canned or moist food. Do not put anything other than dry food or freeze dried raw food in the food hopper.



9. Install the lid

Take out the desiccant from the polybag. Place the desiccant in the desiccant holder. Install the desiccant holder at the bottom of the lid until you hear a click.

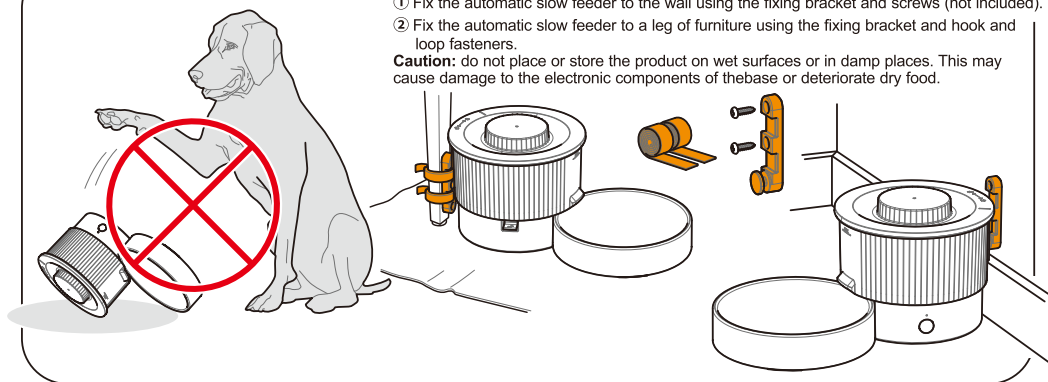


10. Fix the automatic slow feeder

To prevent pets from accidentally tipping over the automatic slow feeder, it is recommended to use the fixing devices provided in the package.

- ① Fix the automatic slow feeder to the wall using the fixing bracket and screws (not included).
- ② Fix the automatic slow feeder to a leg of furniture using the fixing bracket and hook and loop fasteners.

Caution: do not place or store the product on wet surfaces or in damp places. This may cause damage to the electronic components of the base or deteriorate dry food.



Maintenance and Cleaning

Maintenance

We recommend that you clean the agitator after the automatic slow feeder has been in continuous operation for more than a week. Detach the agitator and remove the food residue to ensure the agitator works properly.

Clean the automatic slow feeder regularly to prevent residue and grease from contaminating your pet's food.

Cleaning

1. Unplug the USB-C cable.
2. Remove the lid, open the desiccant holder, and take out the desiccant.

Caution: do not immerse the desiccant in water.

3. Rotate the lock on the agitator counterclockwise to unlock it. Detach the agitator.

4. Press the lock on the base while turning the food hopper counterclockwise to remove the food hopper from the base.

Caution: always detach the base before cleaning the feeder. Do not wet the base. Wetting the base may damage its electronic components.

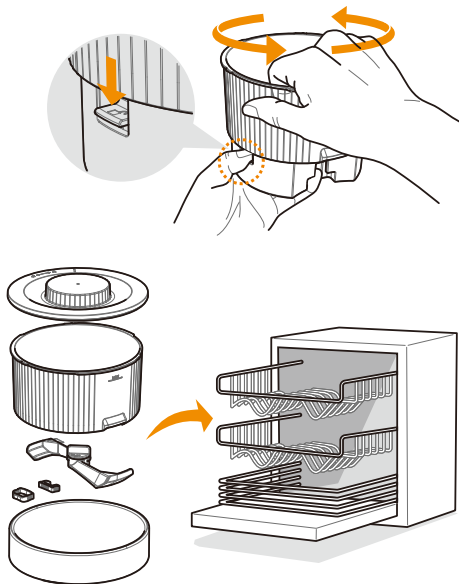
5. Clean the lid, desiccant holder, agitator, food hopper, food outlet adjusters (S/L), and bowl with mild detergent and water. Do not use water above 120 °F. Rinse thoroughly.

Caution: do not wet the base, batteries, and USB-C cable.

6. The lid, food hopper, food outlet adjusters (S/L), and bowl are dishwasher safe. If placing the parts inside the dishwasher, we recommend the top rack and/or silverware holder. If possible, turn down the temperature of the water inside the dishwasher to below 160 °F.

Caution: do not put any parts in a disinfection cabinet for high-temperature sterilization.

7. Let all parts air dry completely or wipe dry with a clean soft cloth. Reassemble the automatic slow feeder.



Troubleshooting

Failure to start

If the batteries are not installed, perform the following steps:

- Check that the household electrics are on—test by plugging in another appliance.
- Check that the outlet is working—test by connecting the feeder to another USB port.
- Check the USB-C cable for signs of damage. If damaged, stop using and replace the USB-C cable.
- If an adapter is used to connect the USB-C cable, ensure that the adapter meets the 5V/1A output requirements.
- Try battery power and install 2 new AA batteries, as described in Setting up.

If the batteries are installed, perform the following steps:

- Check whether the batteries are correctly installed in the battery compartment according to the polarity direction.
- For the installation method of the batteries, as described in Setting up.
- Check whether the protective plastic film of the batteries are removed. Otherwise, the batteries cannot be powered on.
- Batteries may have run out, replace 2 new AA batteries.

Failure to work

If the batteries are not installed, perform the following steps:

- Check that the power cable connection is not loose by unplugging and replugging the USB-C cable.

If the batteries are installed, perform the following steps:

- If the feeder beeps every 5 minutes, it indicates low battery—please replace two new AA batteries.

Failure to feed

- Check the Scheduled Feed Mode settings—whether the time is set correctly, whether the number of servings is not 0.
- Try the Immediate Feed Mode (short press the button) to check whether the agitator is working normally.
- If the agitator rotates normally in the Immediate Feed Mode, check whether an improper food outlet adjuster is installed at the food outlet that may have blocked food dispensing. Try a larger food outlet adjuster or removing the adjuster.
- If the agitator does not rotate in the Immediate Feed Mode, please contact DogCare Customer Support for further assistance.

Failure to seal the outlet during non-feeding time

- Try the Immediate Feed Mode (short press the button) to check whether the agitator is working normally. If the agitator rotates, it will automatically reset and seal the food outlet.
- If the agitator does not rotate the Immediate Feed Mode, remove and reinstall the agitator, as described in Setting up. After the agitator is installed, try the Immediate Feed Mode again to check whether the agitator rotates normally.

Failure to connect with smartphones

- Make sure Bluetooth is enabled on your phone.
- Hold the smartphone as close as possible to the feeder. The connection distance should be kept within 6.5 ft.
- Press the button, if the status LED flashes and your feeder is displayed on the app, follow the onscreen instructions to connect.
- If the status LED flashes and your feeder is not displayed on the app, or your feeder is displayed but cannot be connected long press the button for 5 seconds to restore factory settings and try to connect the app again. If the connection still fails after trying the above steps, please contact DogCare Customer Support for further assistance.

**If the problem is still not resolved after trying the above solutions, please speak to DogCare Customer Support Team.
Do not disassemble the product as incorrect reassembly may result in an electric shock or fire.**

Contact Us

Live Chat

Live chat with us 24/7 on
www.dogcare.net or on
Facebook [@dogcareglobal](https://www.facebook.com/dogcareglobal).



Scan the QR code
to access



Phone

1-833-220-1900

Our helpline hours:

- 9am – 9pm EST, 6am – 6pm PST
- 7 days a week



Email

dogcare@afterservice.vip

To help us address your inquiry as quickly as possible, please include the following in your email:

- Your name
- Phone number
- Product name or model number

We will respond to your inquiry within 12 hours.

Guarantee Terms and Conditions

LIMITED 12-MONTH WARRANTY

Your DogCare product will be covered for parts (excluding the batteries) and labor for 12 months from the date of purchase, subject to the terms of the warranty. This warranty does not cover damage resulting from accident, misuse or abuse, lack of reasonable care, the affixing of any attachment not provided with the product or loss of parts or subjecting the product to any but the specified voltage or batteries. NO RESPONSIBILITY IS ASSUMED FOR ANY SPECIAL, INCIDENTAL OR CONSEQUENTIAL DAMAGES.

In order to obtain warranty service, simply contact DogCare Customer Support for assistance.

CONFORMITY INFORMATION

This equipment has been tested and found to comply with the limits for a Class B digital device, pursuant to part 15 of the FCC Rules. These limits are designed to provide reasonable protection against harmful interference in a residential installation. This equipment generates, uses and can radiate radio frequency energy and, if not installed and used in accordance with the instructions, may cause harmful interference to radio communications. However, there is no guarantee that interference will not occur in a particular installation. If this equipment does cause harmful interference to radio or television reception, which can be determined by turning the equipment off and on, the user is encouraged to try to correct the interference by one or more of the following measures:

- Reorient or relocate the receiving antenna.
- Increase the separation between the equipment and receiver.
- Connect the equipment into an outlet on a circuit different from that to which the receiver is connected.
- Consult the dealer or an experienced radio/TV technician for help.

Changes or modifications not expressly approved by the party responsible for compliance could void the user's authority to operate the equipment.

Product Specifications

Product Name	DogCare Automatic Slow Feeder (Bluetooth version)
Model Number	ASF02
Product Capacity	4 cups
Maximum Food Weight	Approx. 18 oz
Product Size	7" x 7" x 5"
Material	PP, ABS
Input	USB-C DC 5V/1A or AA batteries x2
Operating Ambient Temperature	32 °F to 113 °F
Relative Ambient Humidity	10% to 85% RH