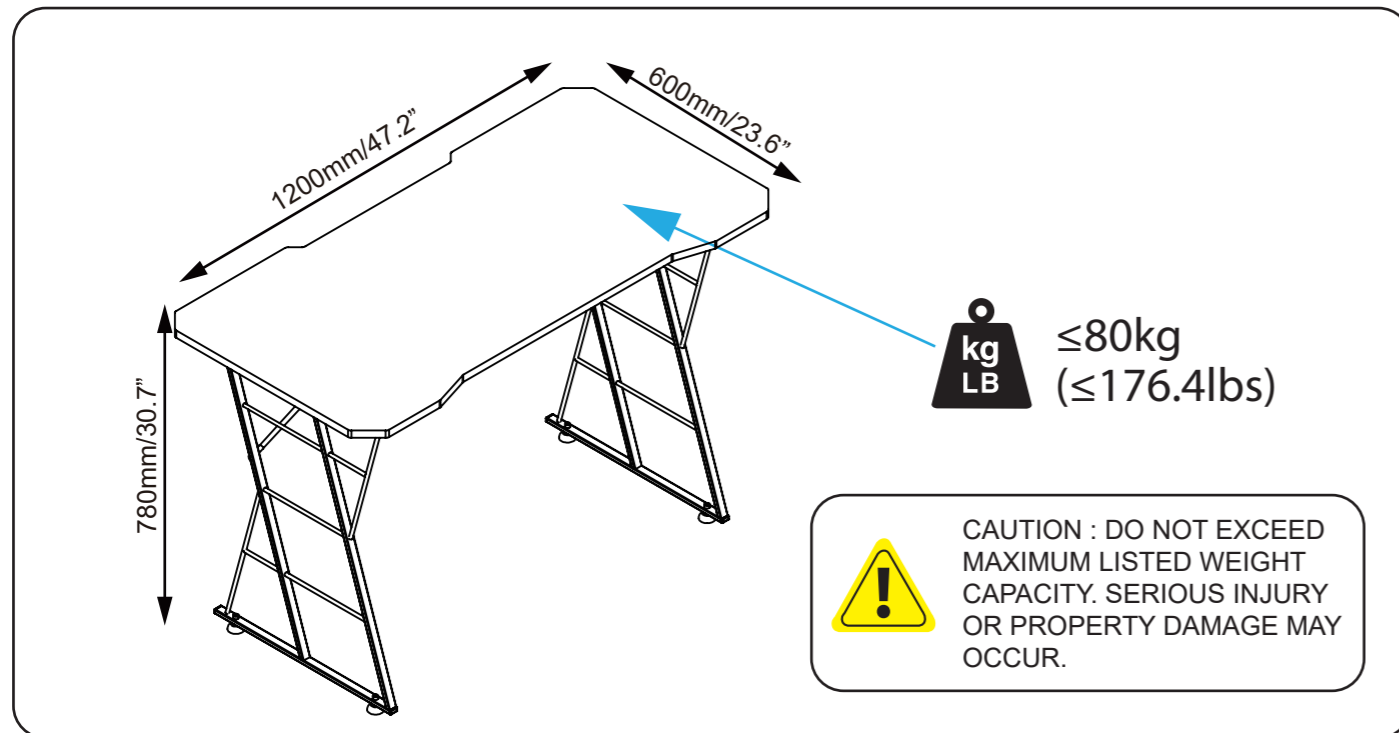
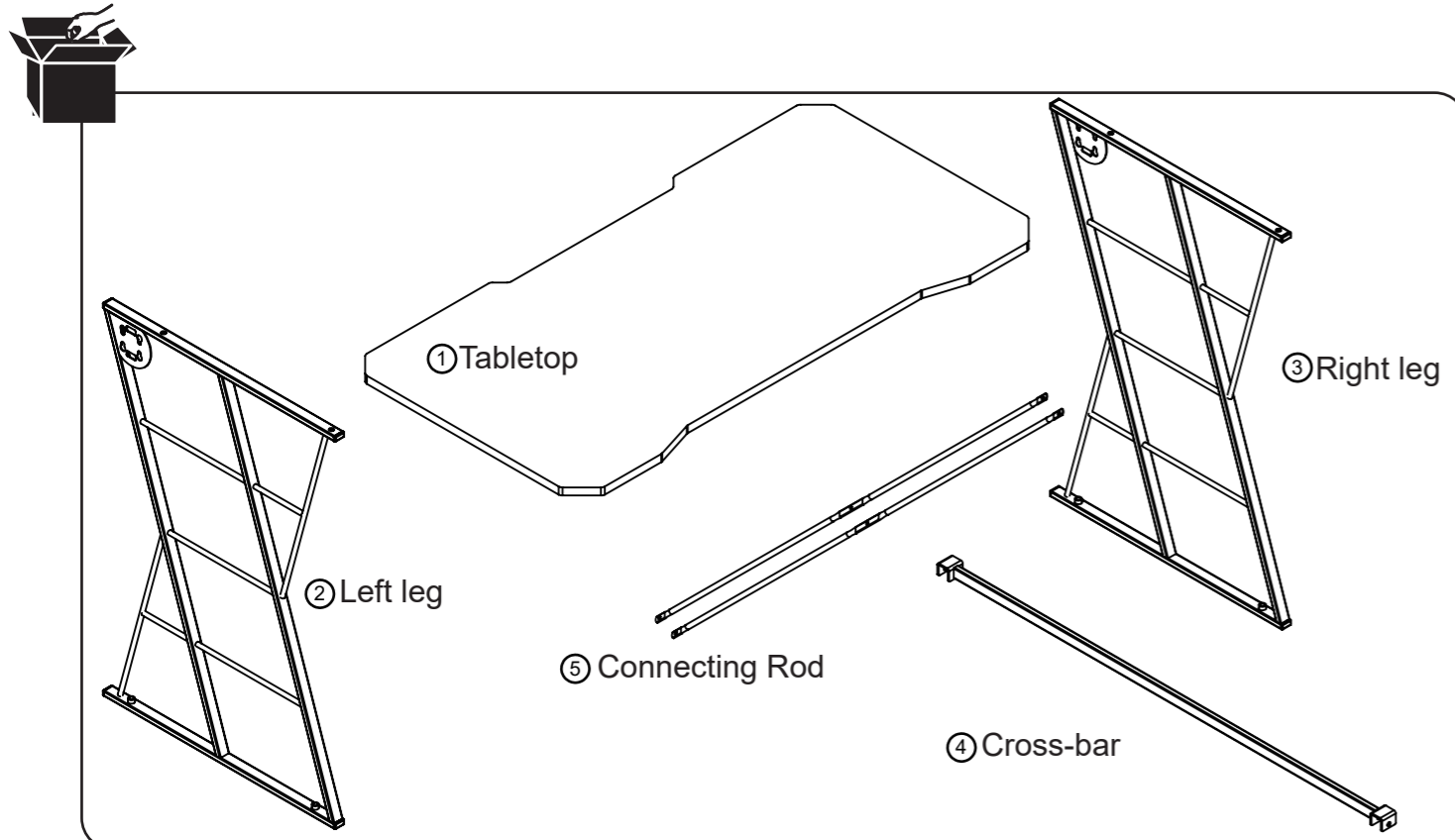


DZ-XGD25 Gaming desk

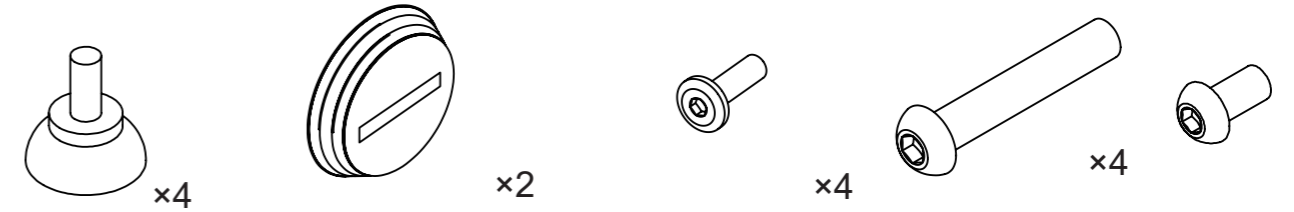
MOUNTING INSTRUCTIONS



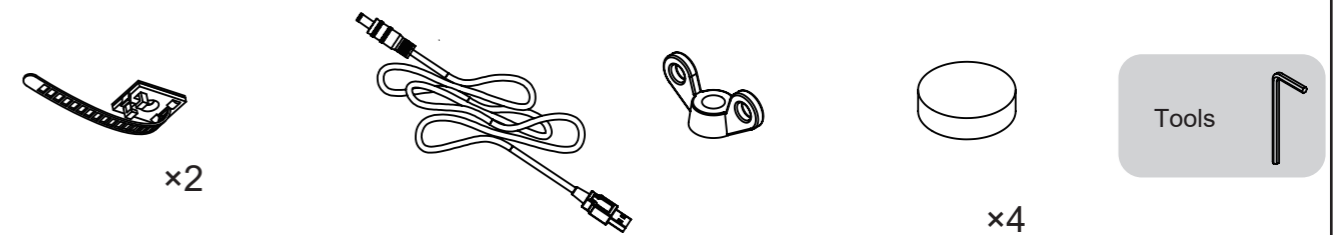
PARTS LIST



A) Adjustable pad B) Decorative cover C) M6×10mm D) M6×25mm E) M6×12mm

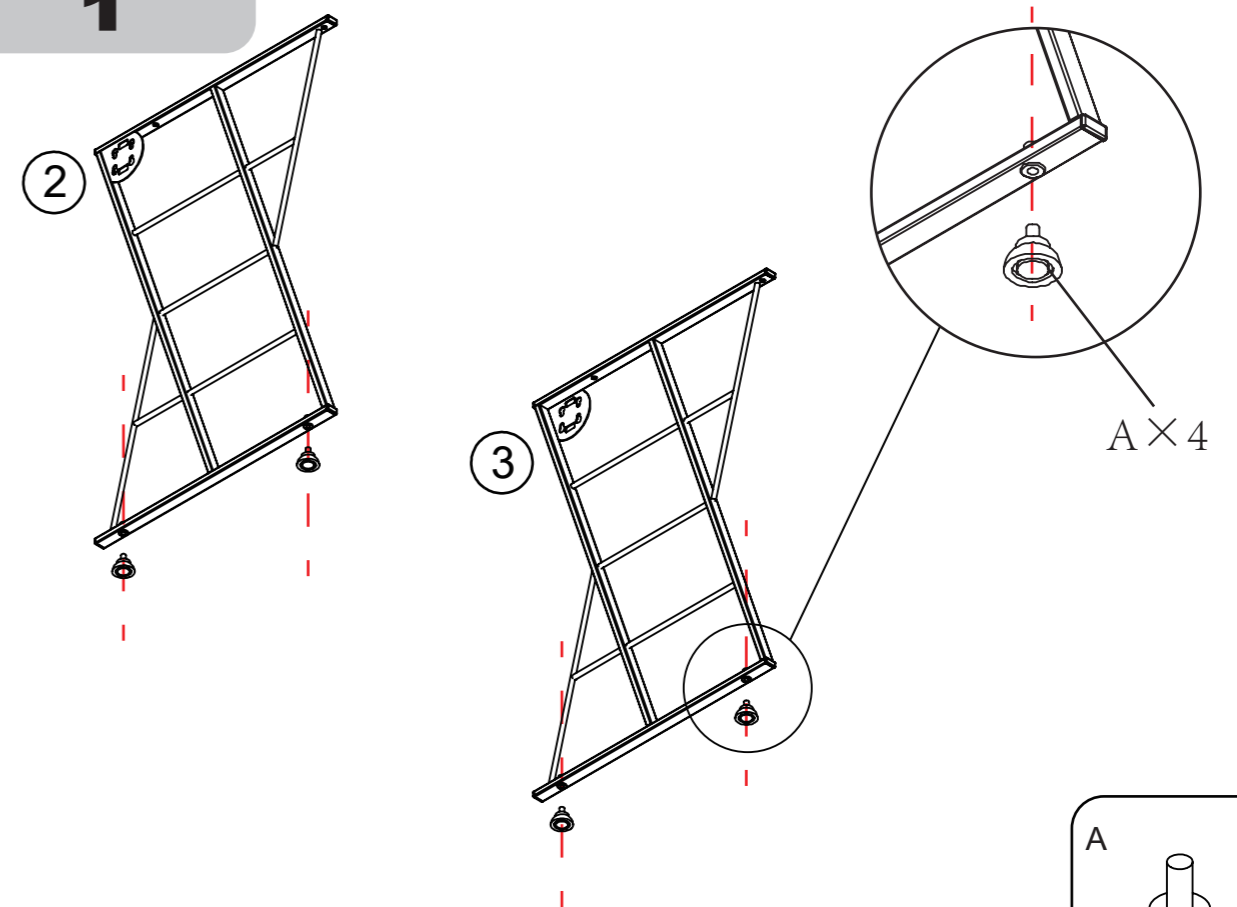


F) Cable management G) USB cable H) Wing nut M6 I) Rubber mat

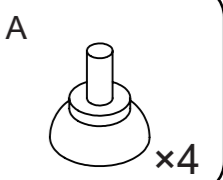


INSTALLATION STEPS

1

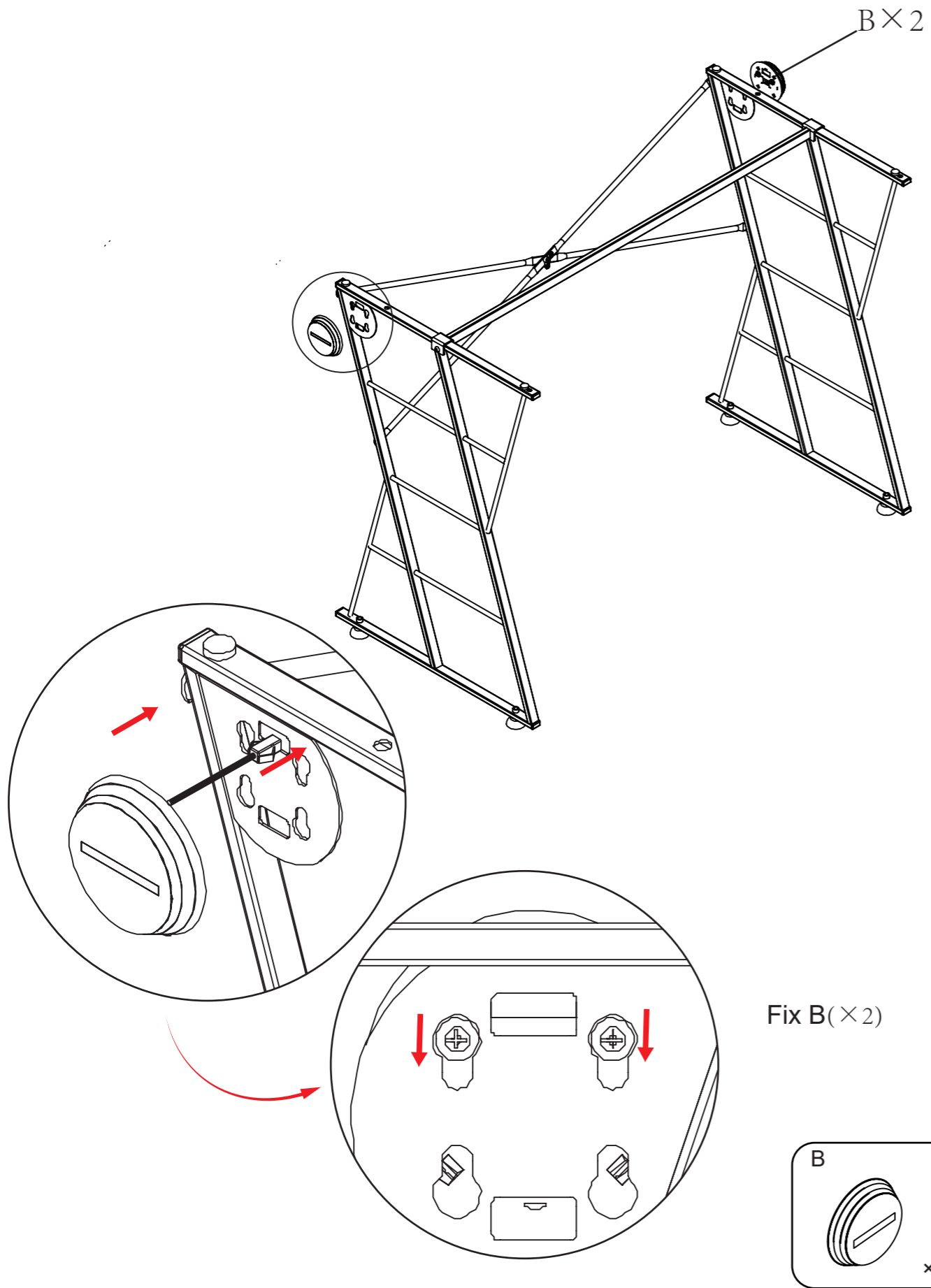


Swirl adjustable pad A (x4) into base



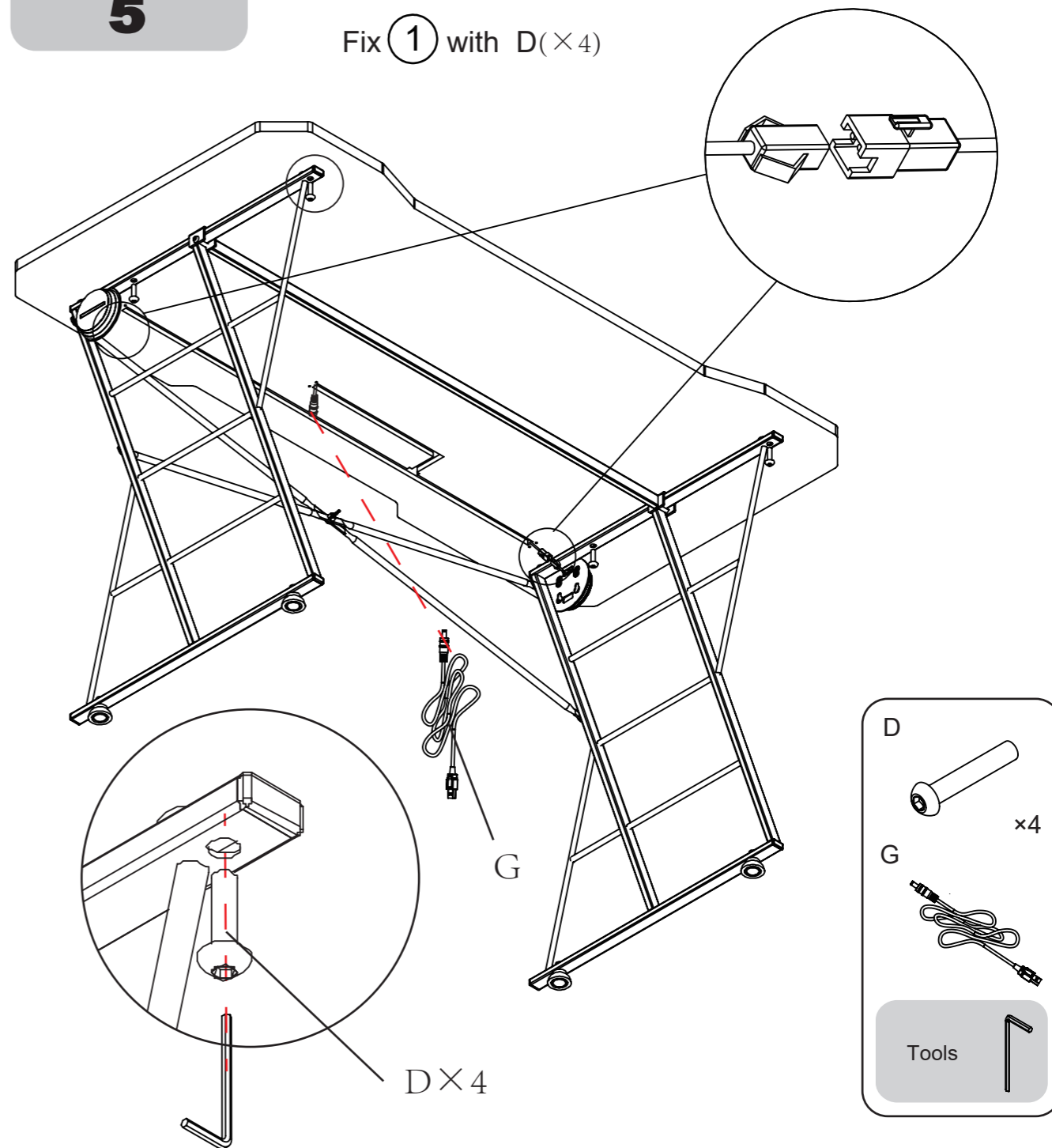
4

B × 2



5

Fix ① with D (x4)



Tips

Uncover the back glue of F and stick it under the leg, F can be used to arrange cables

