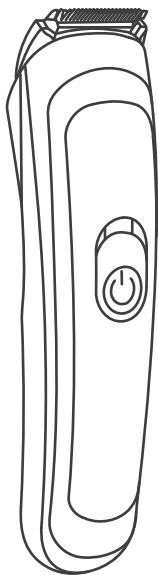


ACEKOOL

Hair Trimmer BT1

—
INSTRUCTION MANUAL

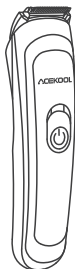


Thank you for purchasing Acekool Hair Trimmer. Before operating this unit, please read these instructions completely and keep the manual ready for further reference.

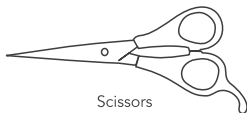
CONTENTS

■ Description	01
■ Specifications	02
■ Important Instructions	02
■ Installation and Removal of The Attachments	02
■ Cleaning and Maintenance	07
■ Safety Instructions	08
■ Environmental Protection	09
■ Battery Disposal	09

Description



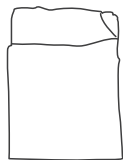
Extra Wide Hair Trimmer



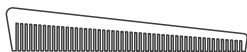
Scissors



Cleaning Brush



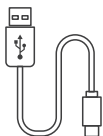
Hairdressing Apron



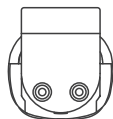
Comb



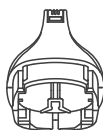
Pouch



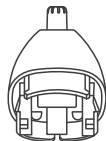
USB Cable
(for 5V 1A Charger)



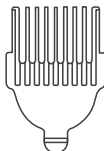
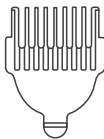
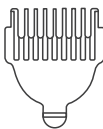
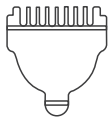
Beard Trimmer



Design Precision
Trimmer

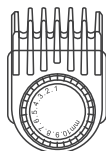


Nose/ Ear Trimmer



Hair guard comb attachment*8

(3mm/6mm/9mm/12mm/14mm/16mm/18mm/20mm)



Beard guard comb*2

(0.5-10mm/10.5-20mm)

Specifications

Battery type: Lithium battery

Rated power: 5W

Charging time: 1.5 hours

Battery life: 90 minutes

Standard input voltage and ampere: 5V=1000mA

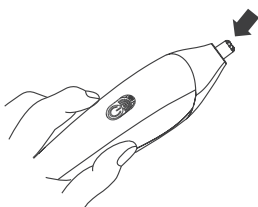
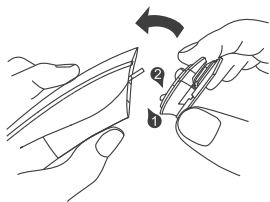
Important Instructions

- When using the trimmer for the first time, please charge it for 2 hours to activate the battery.
- Make sure the product is turned off before charging.
- Connect appliance to charger, it uses the standard USB 5V, 1A.
- The trimmer cannot be charged for too long time. If you don't use it for a long time (2-3 months), please unplug the power cord. Please fully charge your trimmer prior to using it again.
- To extend battery life, charge them at least once every six months after the battery has been fully discharged.

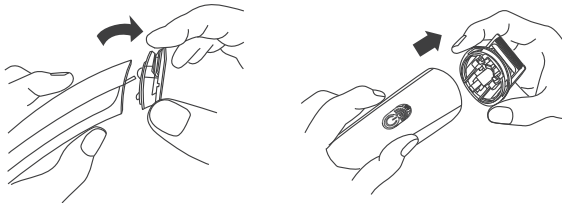
Installation and Removal of The Attachments

How to use

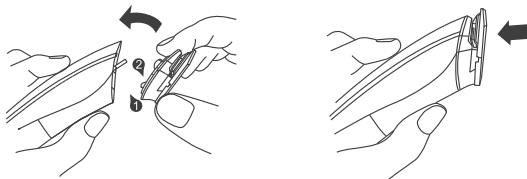
- When replacing an attachment, first place it in the right position with your fingers and then align the clipper with the slot of the attachment and snap it on.



- Please remove the cutting heads according to the illustrations.



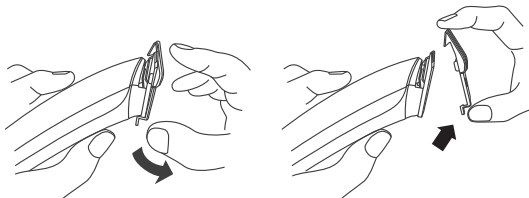
- Align the slots on the comb and the clipper, snap the precision trimming comb on to install it.
- There are eight hair guard attachment with specification as follows.



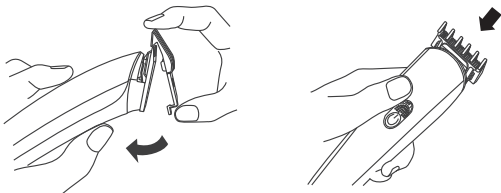
Combs for full-size trimmer

No.	Grade	Length (mm)
1	1	3
2	2	6
3	3	9
4	4	12
5	5	14
6	6	16
7	7	18
8	8	20

- Remove the guide comb from the back to the front as shown.

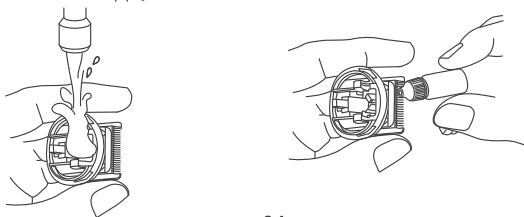


- Align the attachment comb with the front slot and snap it on in the direction of the arrow to install the clipper guide comb.
- Different guide combs can be selected according to different needs.



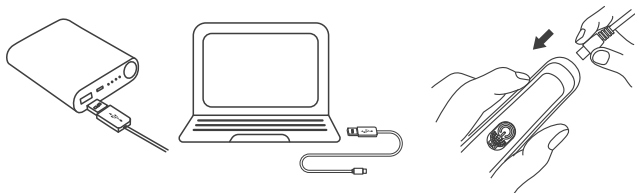
Ways to clean the appliance

- Remove the cutting heads from the appliance before cleaning them in the water as shown. And then clean the internal parts with a cleaning brush to remove dust and apply lubricant.



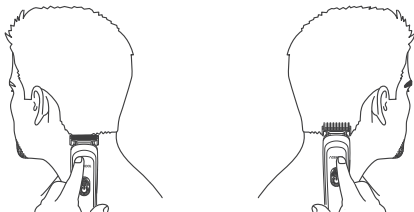
Ways to charge

- Charging through USB port is available and it is very convenient.
- Insert the plug of the charger directly into the appliance.



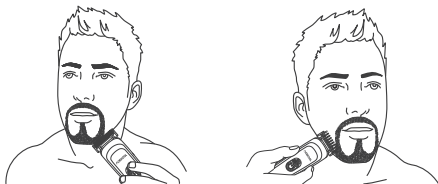
To trim hair

- Install a guide comb onto the full-size trimmer. If you are trimming for the first time, the maximum trimming length is recommended.
- Turn the trimmer on.
- Place the flat top of the comb against the skin.
- Comb your hair slowly with the clipper.
- If the hair accumulates too much on the comb, remove the comb and clean it with a brush or rinse it.



To trim beard

- Trim beard / moustache line with a precision trimming blade.
- Gently place the blade of the trimmer against your skin and start from the edge of the beard / slowly shape it to desired shape.

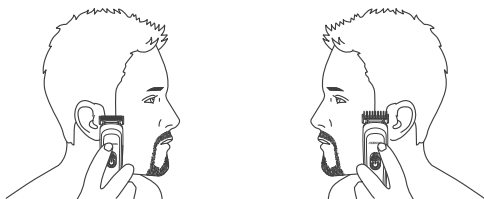


! Note

To trim beard, Choose beard guard (10.5-20mm) or beard guard (0.5-10mm)

To trim sideburns

- Hold the trimmer with the precision trimming and make the blade facing you.
- Starting from the edge of the sideburns, gently lean the blade of the trimmer against your skin and trim the edge of the of the sideburns to a desired position on the face .



Nose or ear trimmer

- Install the nose trimmer.
- Gently insert the trimmer into the nostrils or ears.
- Gently move the trimmer in and out of the nostrils or ears, while rotating.
- Avoid inserting the blade more than 6 mm into the nostrils or ears.



Attach and remove combs from the trimmer



Note

Make sure the trimmer is turned off before replacing the combs.

Tips for desired results

- Keep the beard, moustache and sideburns dry, while trimming them.
- Avoid using lotion before using the trimmer. And comb your hair in the direction it grows.

Cleaning and Maintenance

After using

- Turn off the trimmer.
- Brush off the remaining hair gently. It is recommended to wash the comb and blade with warm water.

Cleaning precautions

- Only soft brush is used for cleaning, such as the brush provided in the package.
- It is recommended to use the lubricating oil attached in the kit or that for professional sewing machines.
- Do not clean the the unit or blade with irritant and corrosive detergent.
- The trimmer can be washed in water in a short time (within 5 seconds), but can not be soaked in water for a long time. Please dry the charging port before charging to avoid accidents.

Storage

- Please put the appliance and adapter in a dry and ventilated place. And Keep the temperature under 140°F.
- Do not wrap the cord of the charging adapter around the appliance.

Safety Instructions

Warnings: to reduce the risks of burns, electric shock, fire or personal injury.

- Watch out when the appliance is plugged into the power socket.
- Keep the plug and electrical cord away from heated surfaces.
- Make sure that the plug and cord are free from moisture.
- Do not plug or unplug the appliance with wet hands.
- Please don't use the appliance with a broken cord. Please contact the seller to purchase a new cord.
- Please charge it, use it and keep it stored at 60-100°F.
- Remember to unplug the appliance when cleaning it.
- Only the attachments provided with the appliance can be used.
- Keep the trimmer out of the reach of children. It's not recommended to use it with people who reduced physical, sensory or mental capabilities, lack experience is not recommended use, either. Otherwise, it may lead to a dangerous situation.

Environmental Protection

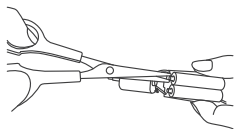
- Please handle the battery properly when discarding the trimmer. Otherwise, it may cause environmental pollution.
- You can seek advice from our service center or from your local solid waste management department.

Note

- Do not put the battery into the fire, otherwise it may burst or be damaged to release toxic substances.
- Do not discard electrical appliances together with general household waste. Please send them to official recycling facilities for the sake of environmental protection.

Battery Disposal

Take the battery out of the shell with scissors and disconnect the battery and the appliance by cutting the connecting wires.



- Unplug the clipper from the socket to avoid the risk of electric shock. Screw out the back screws with a screwdriver; pry open the shell; screw out the screws on the circuit board; find the connecting wires on the battery and cut them.
- Clamp the wire connecting the battery with steel wire pliers.
- Batteries removed from the appliance should be disposed of properly as per local regulations.

Note

The internal battery is a lithium battery. Please take out the lithium battery before dispose the item.

ACEKOOL

— Make Life Easier —

Model: RTCW-9163

Email: support@acekool.vip

Website: <https://www.acekool.vip>

Made in China



IPX6