

Thank You For Purchasing Aobio Label Printer

AOBIO X4 USER GUIDE



Reminders:

1. Aobio X4 is compatible with Windows, Mac & Linux.
2. It is not Compatible with Chromebook, Wifi & Bluetooth.
3. It is a thermal label printer, it only needs thermal media instead of ink, toner or ribbon.
4. It does not work with iPad, Cellphone, iOS and Android.

www.AobioPrinter.com

CONTENTS

1. Quick Installation Video	-----001
2. Item Overview	-----002
3. Connect to PC/MAC	-----003
4. Label Setup	-----004
5. Driver Installation for Mac & Windows	-----005
6. Mac & Windows Printing Setup	-----010
7. User Tips	-----013
8. Safety Notices	-----014
9. LED Status / Feeder Button Instruction	-----015
10. Specifications	-----016
11. Maintenance	-----017
12. Support	-----018

1. QUICK INSTALLATION VIDEO

Watch the short installation video at :

www.AobioPrinter.com

Please go to Aobio official website www.AobioPrinter.com to download the driver, or find the driver in the U Disk comes with the printer.

Aobio X4 is a thermal label printer which uses thermal label media without ink, toner and ribbon. It can print various labels for logistics, pricing, barcodes, QR codes, shipping address, badges, etc.

WARNING

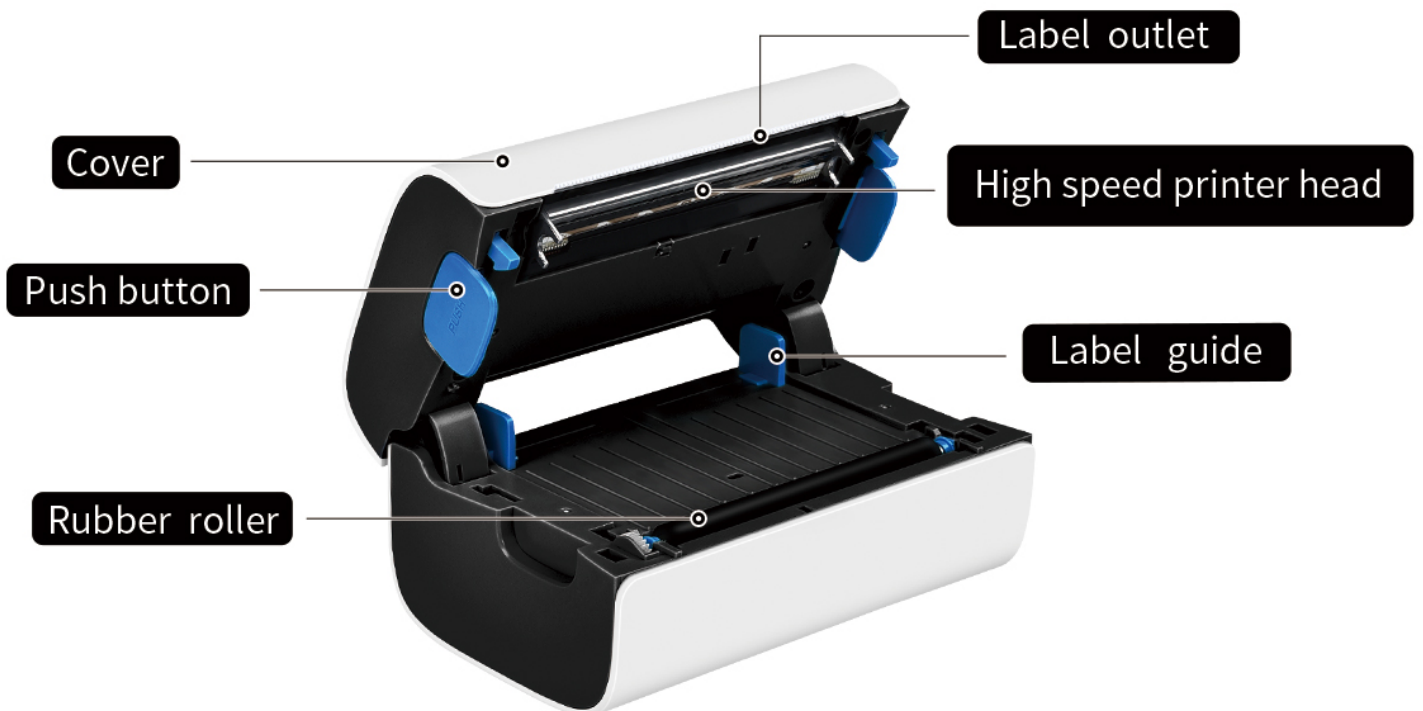
Printer head(TPH) may be very hot.

Please do not touch the printer head or parts around it after printing.

2. ITEM OVERVIEW

Packing List :

1 x Printer	Some Test Fanfold Shipping Labels
1 x U Disk	1 x Power Cable + 1 x Power Adapter
1 x USB Cable	2 x Alcohol Swaps 1 x User Guide



Tips: Press the blue buttons on both sides **at the same time** to open the cover.

3. CONNECT TO YOUR PC/MAC

1. Ensure the printer is OFF.



2. Insert the USB cable totally into the printer USB port and connect to the same computer USB port each time to avoid creating duplicate copies of the printer in your operating system. (If your computer is type-C interface, please buy a Type-C USB cable, or find a USB-C to USB Adapter)



3. Make sure the power adapter is tightly connected, then connect the power cable to the printer's power port and the electrical socket.



4. Turn the power ON, (Pressing down “—” means turn ON) and you will see the top button shining.



Warning !

Must turn off the switch before you plugging the power cable into power port each time or it may cause spark!

4. LABEL SETUP

Aobio is capable of working with labels in various sizes. Your printer needs to learn your label properties prior to its first use.

To initiate **Automatic Label Identification** and run **Intelligent Label Study** please follow these steps:



1. Turn on power and wait for 5 seconds until the printer is initialized.



2. **Automatic Label Identification:** Load the label from the back side of printer (don't need to open the cover), push both blue Label Guides to make sure they are flush against the label with no gap, until the paper is auto fed and identified.



3. **Intelligent Label Study (Identify the paper size):** press and hold the top feeder button for 3 sec until you hear one beep then release, the label will auto move back and forth to complete label size study. Then you can start printing.

5. DRIVER INSTALLATION

Two ways:

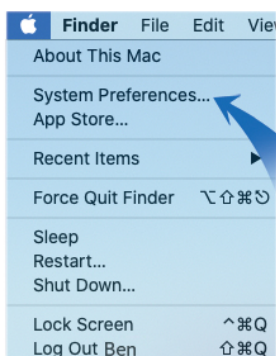
- ① Download the driver for Windows/Mac from www.AobioPrinter.com
- ② Directly install the driver from our support U Disk.

5.1 Driver Installation for Mac

1. Double click the "Aobio-Mac-Driver_Latest.dmg".
2. Double click "AobioPrinter.pkg" to install the driver, if you see a warning showed below (If you do not see this warning you can skip 3、4、5 steps).



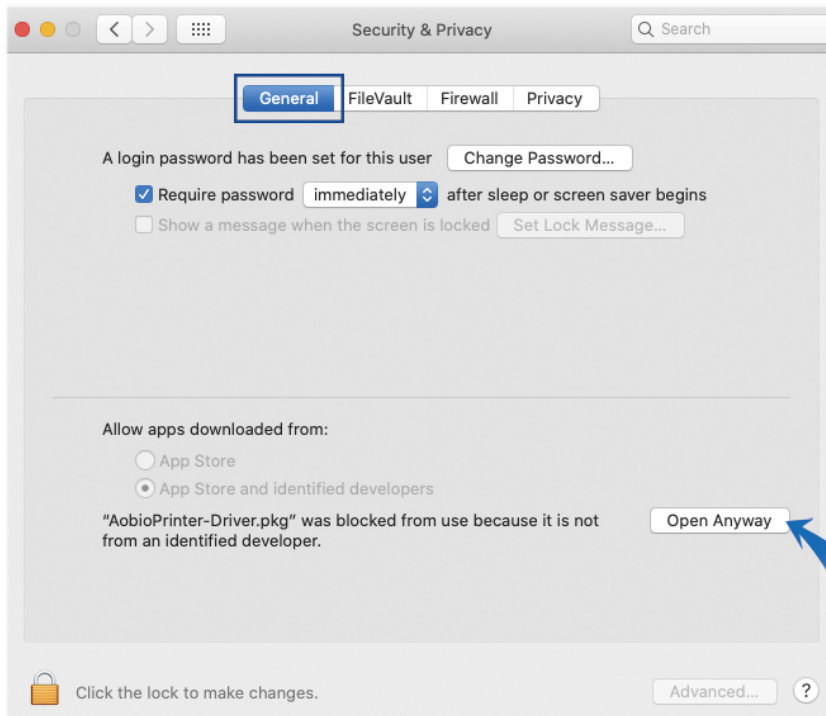
3. Click "System Preferences".



4. Click "Security & Privacy".



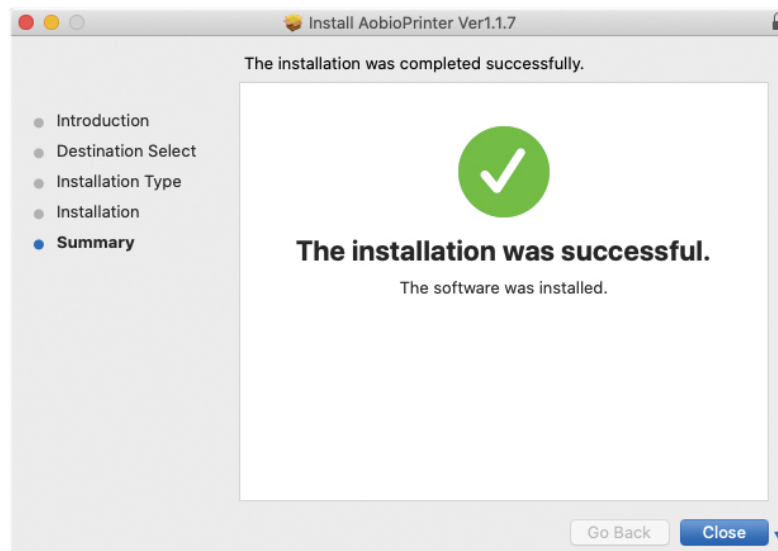
5. Click "General" and then Click "Open Anyway" .



6. Click "continue" button.



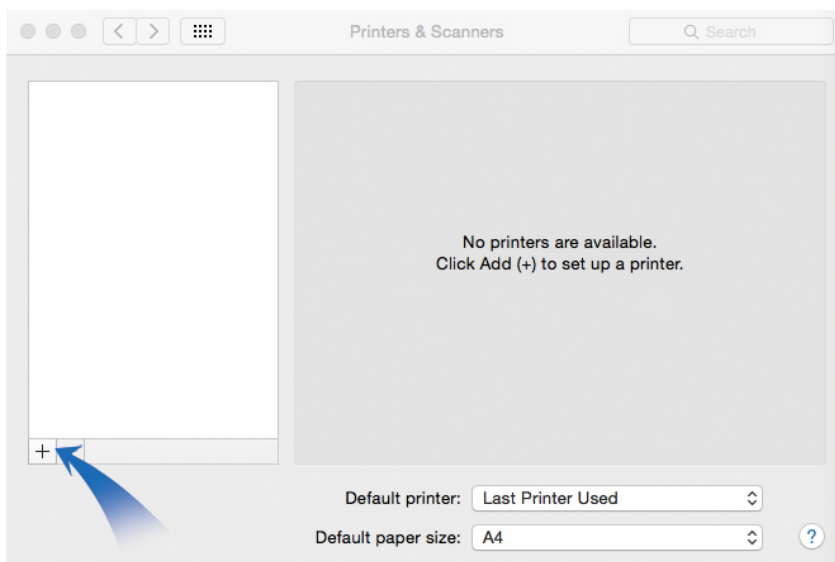
7. Click "Close" to finish.



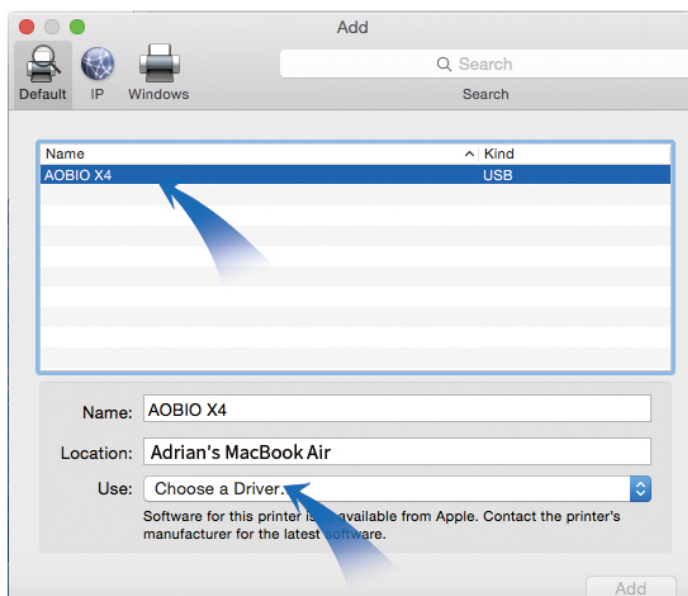
8. Open "System Preferences", and click "Printers and Scanners".



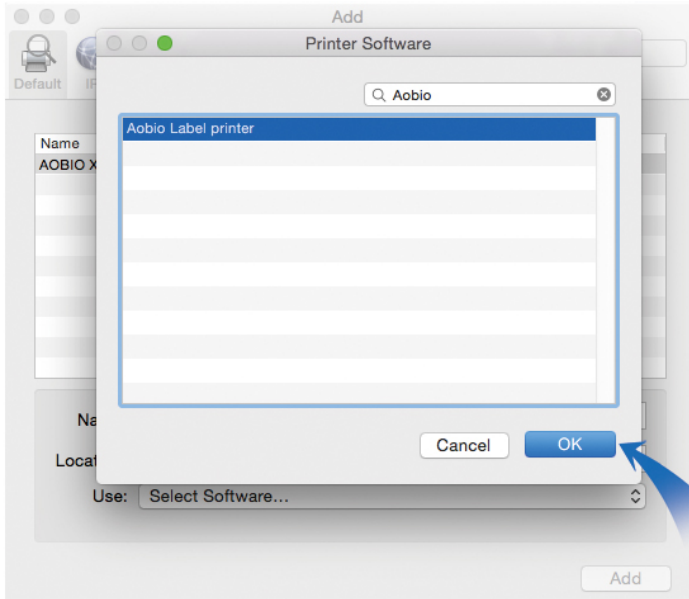
9. Click "+" to add a new printer.



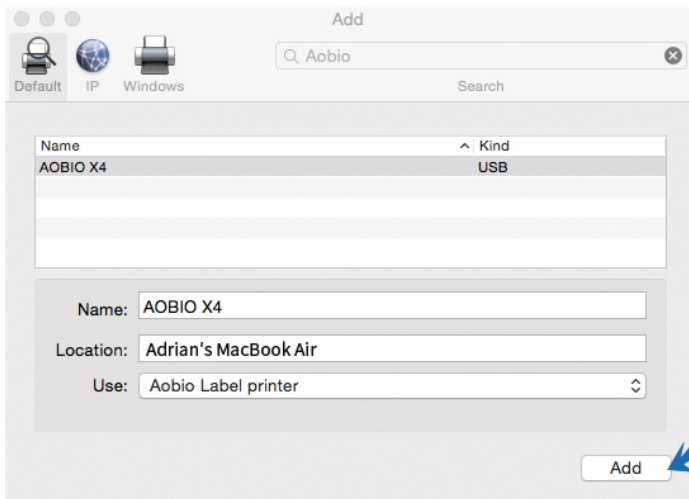
10. Turn on your printer, and double click "Aobio X4", select "Choose a Driver..." under "Use" drop down menu.



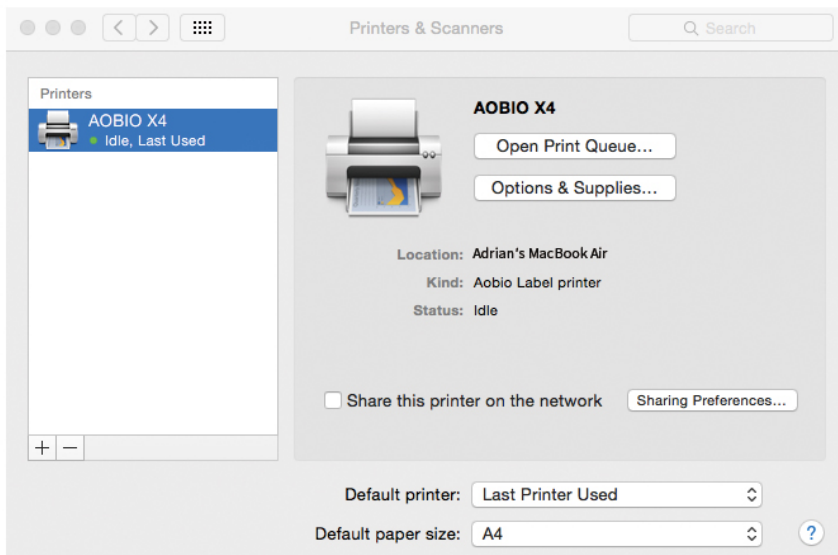
11. Input "Aobio", and choose "Aobio Label printer".



12. Click "Add".

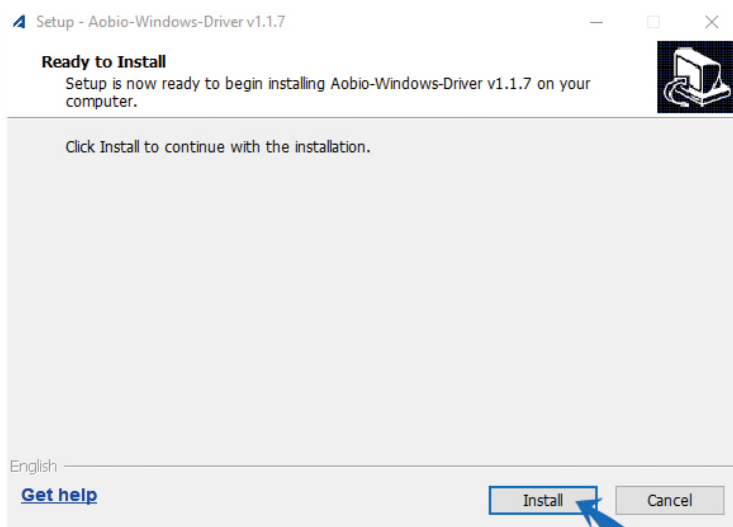


13. Congratulations, printer is successfully installed!

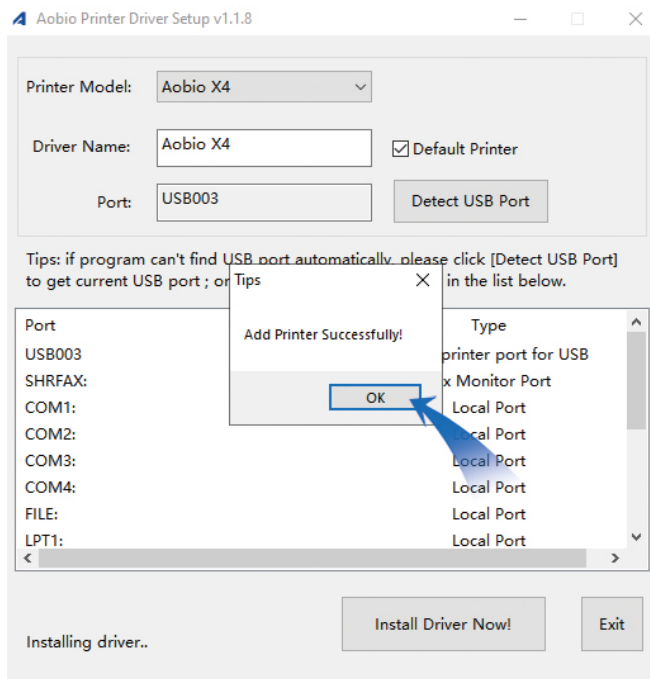


5.2 Driver Installation for Windows

1. Double click “Aobio-Windows-Driver-Latest” to install.



2. Then, “Add Printer Successfully!” appears.

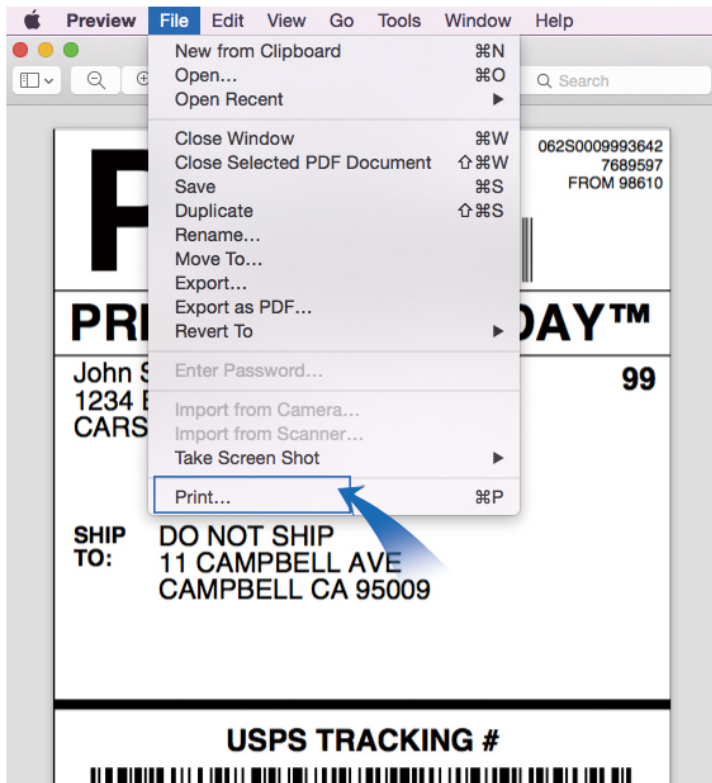


6. MAC & WINDOWS PRINTING SETUP

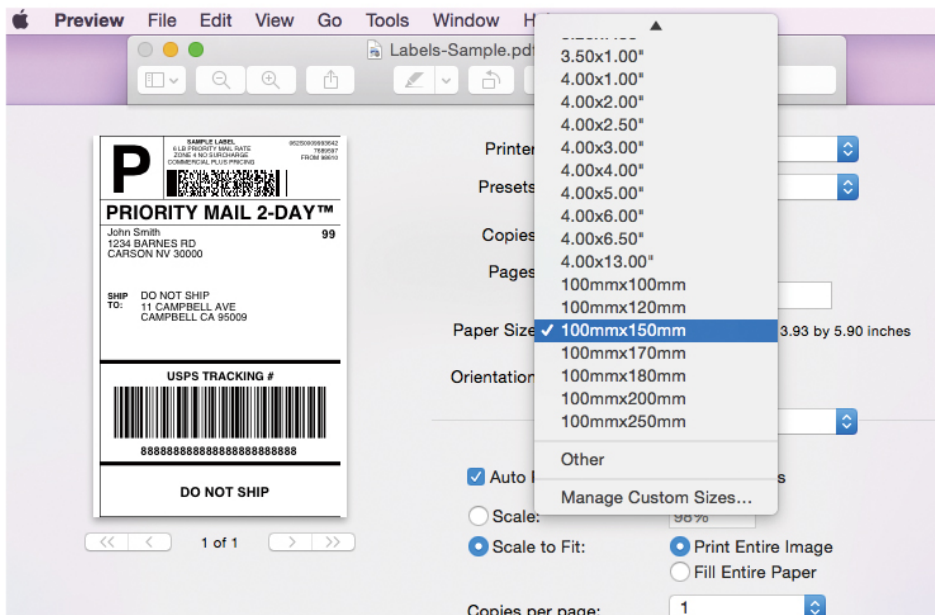
Aobio X4 is default to common size of 4"x 6"(102 mm x 152 mm)setting. When printing your file ensure "paper size" is set correctly for your label, If you print the same size please skip this chapter 6. If you print other size labels you need to set label size in the driver. please set as follows:

6.1 Mac printing setup

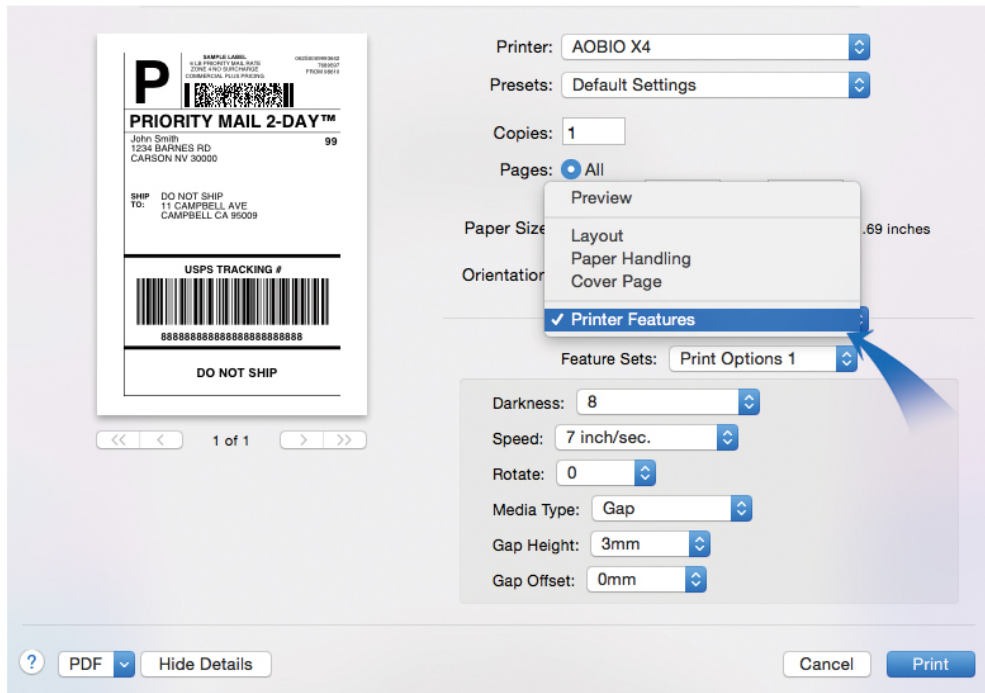
1. Open a PDF file (any document file is ok), Select "File" → "Print" .



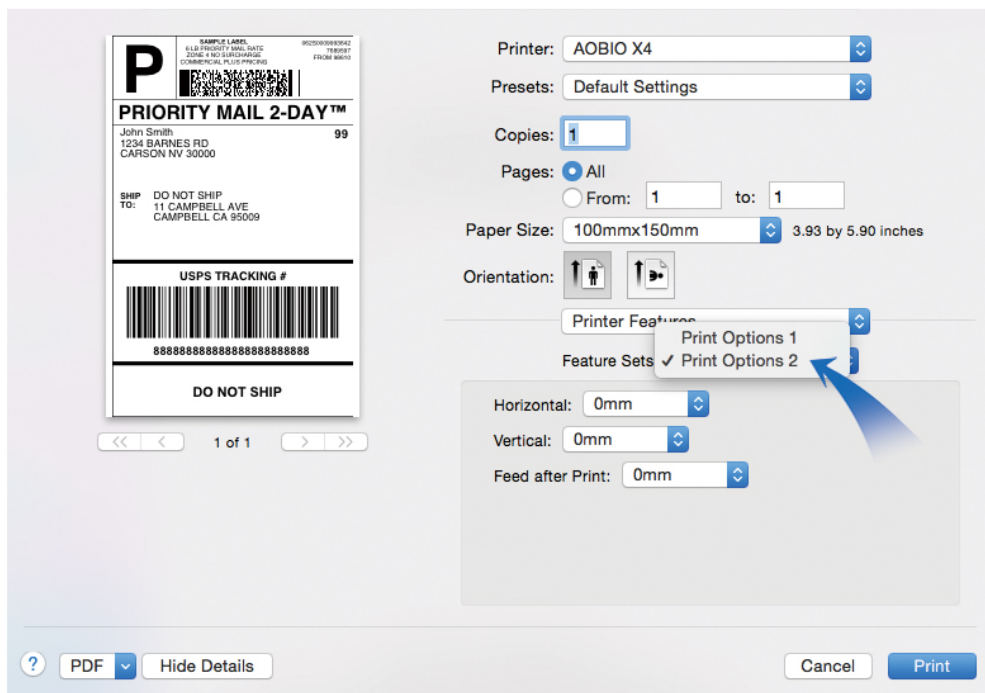
2. Choose "100 mm x 150 mm" under "Paper Size " drop down menu.



3. Select "Printer Features", then you can change the setting of printer, for example: Speed, Darkness...



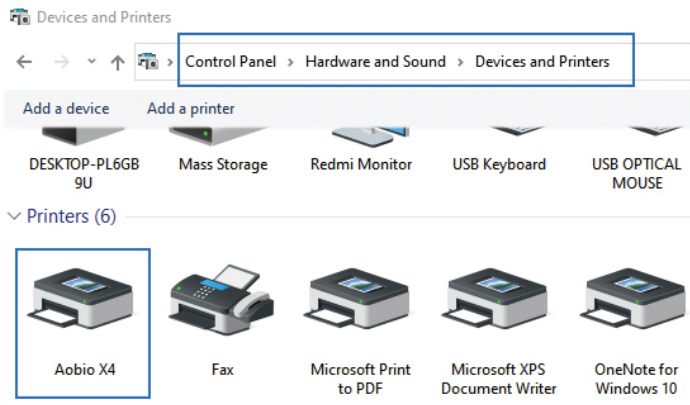
4. Select "Print Options 2", then you can change the setting of printer, for example: Horizontal, Vertical, Feed after Print.



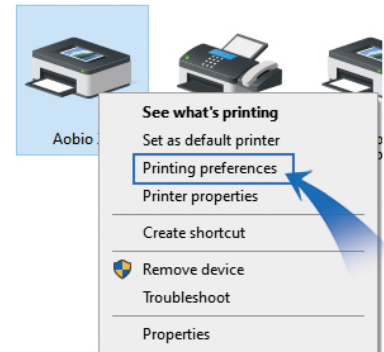
6.2 Windows printing setup

Take Win 10 as example:

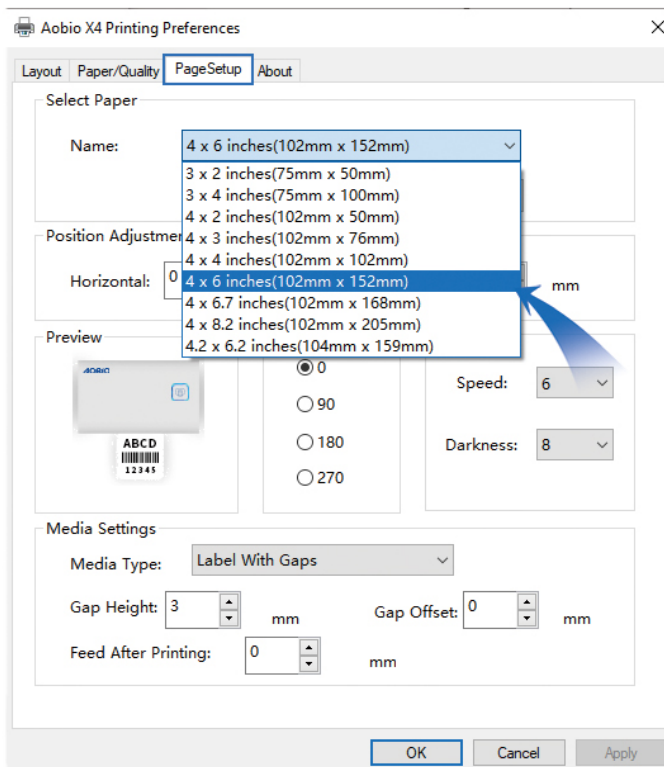
1. Open your printer page Control Panel → Hardware and Sound → Devices and Printers.



2. Right Click on your newly installed printer "Aobio X4", choose Printing preferences.



3. Click "Page Setup" and choose the size of your label from the drop down menu, Ensure "Name" is set correctly for your label.



7. USERS TIPS

1. When you load the labels, the side for peeling label should face up.
2. Make sure there is no particles on the surface to avoid damage to the printer head.
3. When “No Aobio printer was found! Please connect the printer and switch” appears, please check whether the USB head is plugged in accordingly.
4. The label size of Aobio X4 printer is default to 4"x 6"(102 mm* 152 mm). Every time you change different size labels , please run **Intelligent Label Study** before printing.
5. If you need to adjust the label size, please click: Print-->Attributes -->Page---> Name , choose label size same as actual ones, otherwise it will lead to blank labels or skip labels.
6. In case the labels keep coming out after one is printed, just clear the printing queue.
7. If there are white spots on printed labels, stop printing to clean the printer head.
8. When the label is jammed, or the printer head needs to be cleaned, just press blue buttons at the same on both sides to open the cover.

8.SAFETY NOTICES

- 1.Do not touch the printer head, because it maybe very hot after using.
- 2.Do not keep the printer power cable plugging in if you are not going to use it in near future.
- 3.Do not use the printer if you find any irregularities which could result in electrocution or fire.
- 4.Use only approved accessories, and do not disassemble or repair the unit by yourself.
- 5.Keep the printer away from water and other objects that could destroy the components.
- 6.Do not bend the power cord excessively or place objects on the cord.
- 7.Keep the printer out of reach of children.

9. LED STATUS /FEEDER BUTTON INSTRUCTION

Red Light	Blue Light	Description
OFF	ON	Normal operation
Flashing once every 1 second	Flashing once every 1 second	Printer head is overheated (Turn off the power to cool down and will resume.)
Flashing once every 2 seconds	OFF	Paper shortage (Be sure the label is loaded correctly. You may need to run automatic label identification.)
Flashing once every 1 second	OFF	Cover is not closed

Feeder button Instruction:

1. When you change different size label, please press feeder button for 3 sec to run **Intelligent Label Study** again.
2. When the printer is running, press the feeder button once to pause. When you need to resume the printing job, just press the same button once again.

10. SPECIFICATIONS

Model	X4
Method	Direct Thermal
Resolution	203 dpi (8 dots/mm)
Max Printing Speed	180 mm/s (7ips)
Paper Width	40-110 mm, (1.57"~ 4.3")
Printing Width	40-108 mm, (1.57"~ 4")
Paper Thickness	0.06-0.25 mm
Max Label Length	300 mm (11.8")
Power Adapter	24 V / 2A
Printing Life	~ 700,0000 labels
Operating Environment	Temperature: -10 to 50 °C Humidity: 10-90% (non condensing)
Storage Environment	Temperature: -40 to 80 °C Humidity: 5-95% (non condensing)
Connection	USB
Weight	1.59 lbs / 720g
Dimensions	L176mm *W110mm *H93mm
Supported Operating	Windows(XP and Latest) Mac(10.9 and Latest) Linux

11. MAINTENANCE

1. Printer Head Cleaning Steps:

- (1). Turn off the printer, remove the power cord, push the blue buttons at the same time to open the cover.



- (2). Wait for 3 minutes until the printer head cools down. The printer head may be very hot after printing.
- (3). Please use an alcohol swap to clean the thermal printer head (don't use water to clean it, move the swap from center to both ends of the TPH).
- (4). Wait for 2 minutes until the alcohol has completely vaporized, then close the cover.

2. Do not touch or scratch the printer head surface, roller, or sensor.

12.SUPPORT

Your Aobio printer is covered by a 365-day warranty.

For Tech support, please reach us by:

Email: service@AobioPrinter.com

Whatsapp: 571 410 5259

Skype: 571 410 5259

Call: 571 410 5259

For more questions and answers, please visit
www.AobioPrinter.com