



Automatic Electric Milk Frother



Before using please read the instruction manual and keep it for future use

www.giveneuhq.com

IMPORTANT SAFETY INSTRUCTIONS

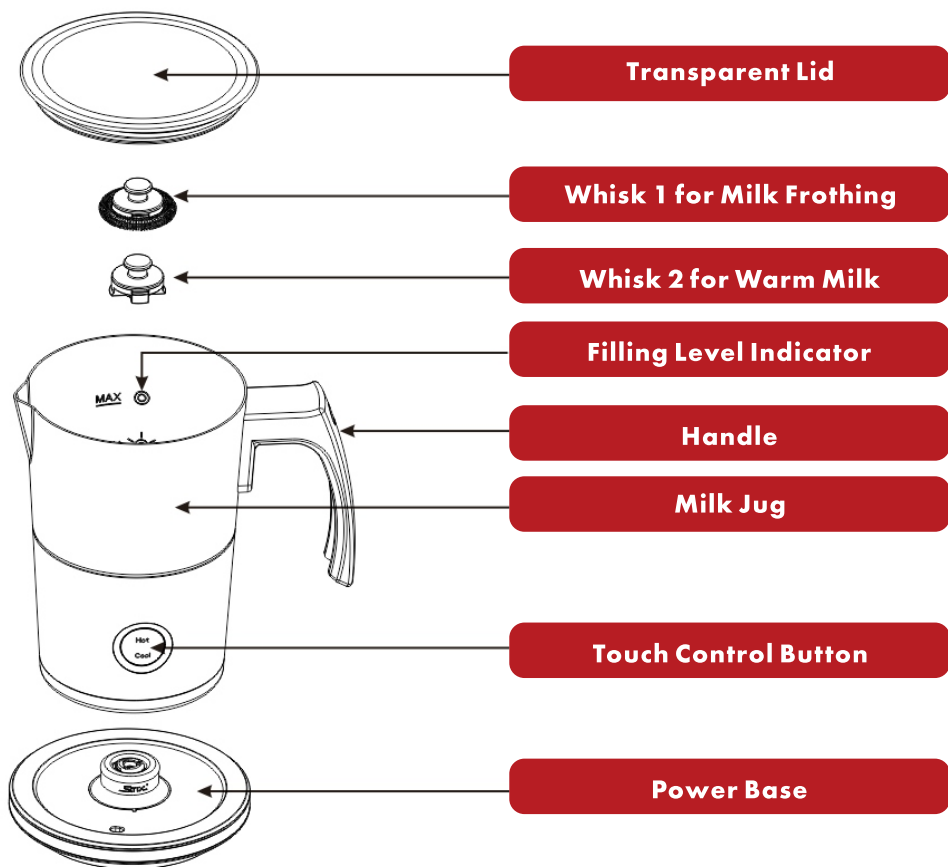
READ ALL INSTRUCTIONS, WARNINGS, AND PRECAUTIONS COMPLETELY AND CAREFULLY BEFORE USE.

Save these instructions in an easily accessible place for future use.

1. To protect against electric hazards, do not immerse cord, plug, or the appliance in water or any liquid.
2. Children must not use the appliance unless they are older than eight years old and are supervised.
3. Unplug from outlet when not in use and before cleaning. Allow to cool before putting on or take off parts; and before cleaning the appliance.
4. Do not operate the appliance without jug or run empty.
5. The lid must be placed on the jug during operation.
6. Do not operate any appliance with a damaged cord or plug, or after the appliance malfunctions or has been damaged in any manner.
7. Do not let cord hang over the edge of table or counter or touch hot surfaces.
8. **CAUTION:** This appliance generates heat during use. Proper precaution must be taken to prevent the risk of burn, fire or other damage to persons or properties.
9. The use of accessory attachments not recommended by the appliance manufacturer may result in fire, electric shock or personal injury.

PRODUCT FEATURES

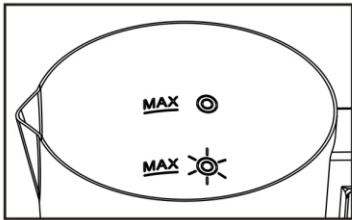
GIVENEU



Technical Data:

Rated Voltage	220-240V~ 50-60Hz
Power Consumption	500-550W
Protection Class	1

FILLING LEVEL INDICATORS



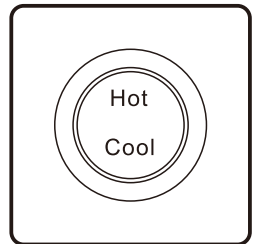
MAX	⊙	MAX level for heating milk/hot chocolate milk (300ml)
MAX	☀	MAX level for cold/hot milk frothing/ warm airy milk frothing (120ml)



Notice: Do not exceed the MAX line-the middle max inside of jug.

Touch Control Button Function :

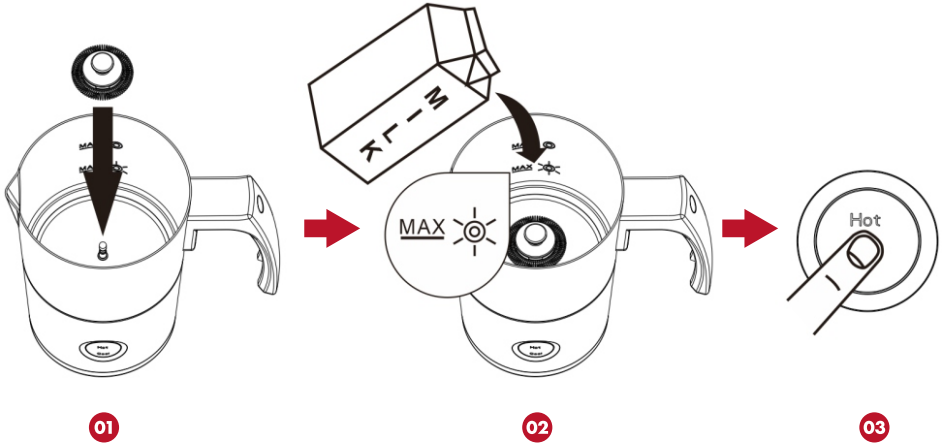
1. Touch once. Red light will illuminate to indicate milk heating and frothing.
2. Touch twice in a row. Blue light will illuminate to indicate cold milk frothing without heating.



WISK	PROGRAMME	BUTTON OPERATION	LED LIGHT	FILLING VOLUME	FILLING	TEMPERATURE
	Hot Milk Foam	Touch Once	Hot (Red)	120ml	150s	50-65°C
	Cold Milk Foam Without Heating	Touch Twice in a Row	Cool (Blue)	120ml	150s	
	Heating Milk	Touch Once	Hot (Red)	300ml	150s	50-65°C
	Hot Chocolate Milk	Touch Once	Hot (Red)	300ml	150s	50-65°C

1. The button is touch control, please press the button gently.
2. This milk frother adopts advanced magnetic drive technique unlike other milk frothers on the market, so there will be slight noise when working.
3. Use refrigerated whole milk for best result. Non-dairy milk doesn't froth as well as dairy milk since the protein content is lower than dairy milk, so it barely froths.
4. For non-dairy milk lovers, we recommend a Barista style non-dairy milk which should help with the milk frother for plant based milk. Froth result cannot be guaranteed for any other non-barista style plant milk.
5. Milk heats to approximately 50-65°C when heating milk. This is the optimal temperature, as it ensures the flavor of the coffee is not impaired. Over-heating will destroy milk nutrients.
6. Do not fill the milk amount exceed corresponding level indicator inside of the jug. It will overflow.
7. The key factor in achieving good froth is using fresh and cold milk. Milk should be very cold. Use milk that has been taken directly from the refrigerator and start frothing immediately.

■ Milk Frothing & Heating

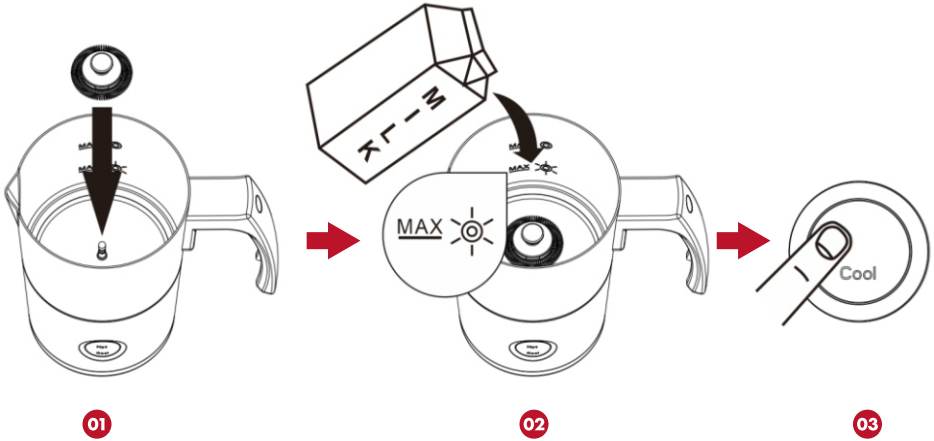


1. Set the whisk 1 inside of the jug.
2. Pour the milk into the jug: MAX Fill Line: 120ml.

Notice: Do not exceed the MAX line-the middle max inside of Jug.

3. Touch the button once, then the red indicator light will illuminate to show that the unit is in operation. Approx 150 seconds the device power off automatically. The led light will flash 10 seconds to indicate the work is done and then go off. The process can be interrupted at any time by touching the button.
4. Unplug the power plug from the power socket after done.

■ Frothing Cold Milk:

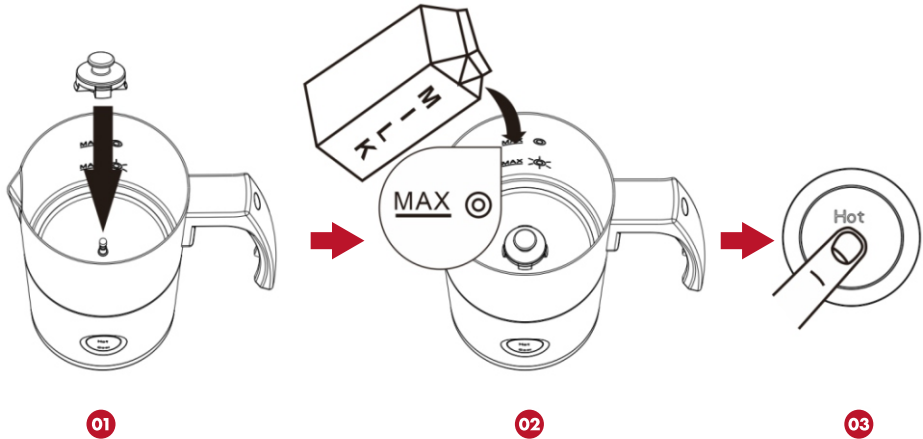


1. Set the whisk 1 inside of the jug.
2. Pour the milk into the jug: MAX Fill Line: 120ml.

Notice: Do not exceed the MAX line-the middle max inside of Jug.

3. Touch Twice in a Row, then the blue indicator light will illuminate to show that the unit is in operation. Approx 150 seconds the device power off automatically. The led light will flash 10 seconds to indicate the work is done and then go off. The process can be interrupted at any time by touching the button.
4. Unplug the power plug from the power socket after done.

■ Heating Milk:



1. Set the whisk 2 inside of the jug.
2. Pour the milk into the jug: MAX Fill Line: 300ml.

Notice: Do not exceed the MAX line-the middle max inside of Jug.

3. Touch the button once, then the red indicator light will illuminate to show that the unit is in operation. Approx 150 seconds the device power off automatically. The led light will flash 10 seconds to indicate the work is done and then go off. The process can be interrupted at any time by touching the button.
4. Unplug the power plug from the power socket after done.

Note:



1. Unplug the power plug and allow the appliance to cool down after each use.
2. Always remove the jug from the power base before cleaning.
3. The power base with cord cannot be cleaned in dishwasher. Clean it with a soft cloth only.
4. The milk frother is non dishwasher-safe. Do not rinse the milk frother bottom into water.

Important:

Never use sharp cleaning agents, metal objects or a hard nylon or metal brush on the milk frother. Abrasive cleaner will scratch the non-stick inner surfaces.

1. The jug: clean immediately after each use. Flush and clean the walls using warm, soapy water and a non-abrasive cloth.
2. The lid: separate the silicon ring from the lid before washing/rinsing both pieces with water. Reassemble the ring into the lid before reuse or storage.
3. The whisks: remove the whisks from the jug. Wash with warm water. Dry and store in a safe place. Out of young children reach. Do not use the dishwasher.

	Dishwasher	Water
Transparent Lid	✓	✓
Sealing ring inside of the lid	✓	✓
Whisk 1/Whisk2	X	✓
Jug	X	✓
Power Base with Cord	X	X

1 YEAR WARRANTY



This product is covered by 1-year limited warranty from the date of purchase subject to the below conditions:

- ① The product is free of defects in materials and workmanship by manufacturer.
- ② This product is being correctly used according to our user manual.

LIMITATIONS:

- ① Product misuse, abuse, negligence, accident, repairs, alterations, or lack of maintenance.
- ② Our warranty policy is limited to purchase made from us(GIVENEU). If you purchase from a different retailer, please contact them directly. Unauthorized reselling of GIVENEU products is prohibited.
- ③ Warranty-related shipping costs can only be covered in the country of purchase. If the product is taken outside the country of purchase, any shipping costs will be the buyer's responsibility.

Friendly reminder: When contacting us for help, be sure to provide the Order ID for a fast solution.

CONTACT US:

We would love to hear from you. Please contact us a support@giveneuhq.com for any inquires.

Give you a new life experience

Subscribe us for more deals and news!



Follow Us@giveneu