



Induction Cooker

Give you a new life experience



Before using please read the instruction manual and keep it for future use

www.giveneuhq.com

■ **Warning:**

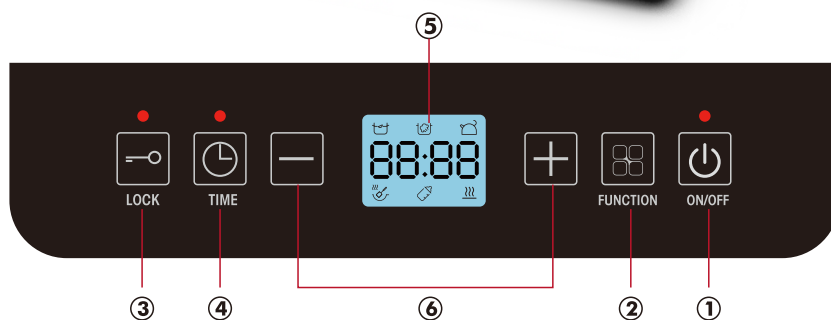
Switch off the induction cooker in case of any crack on the cook-top panel.

1. Do not place the unit in any place that is near gas or hot environment in order to avoid damages or malfunction.
2. To reduce the risk and damage, this plug should be fit into an individual outlet. The rated electrical current is not less than 15A.
3. Place the unit on a level surface, the distance between it and its background surrounding must be not less than 10cm
4. Do not immerse the appliance and electric cord in water liquid, or allow liquid to go into the cabinet and get short/contact inner electrical parts, the power cord must be plugged out before cleaning.
5. Do not cover gas vent with anything during cooking, otherwise it will cause danger.
6. To avoid danger, please uncap the cover before heating tinned food.
7. If it is still not working after the inspection by self, please immediately contact with our service points, do not apart the unit to avoid any danger.
8. Be sure to use the power cord recommended by the appliance manufacturer after it is damaged.
9. It would get dangers when the metal gets heated directly or indirectly.
10. Do not place any metal on the plate, also the nonmetal pad within 10cm.

SAFETY CAUTION

11. Do not cook with an empty pot, it will cause malfunction or danger.
12. Always clean the unit to avoid any dirt goes into the fan to affect normal working.
13. Do not touch the plate while the unit is working, to avoid getting burned.
14. Do not let children operating alone to avoid getting burned or danger.
15. Who with cardiac pacemaker, please operating the unit after confirm with doctor there's no any effect.
16. Do not operate the unit on the gas stove or metal surface to avoid any danger.
17. Please do not place paper, cloth or other articles under the bottom of the pan to get heated, to avoid the danger of fire.
18. Do not place the unit on the cloth, carpet to avoid blocking the gas vent.
19. Please kindly avoid hitting the plate of the unit, in case of getting cracked, should turn off the unit and plug out immediately, and then contact with service points of our company.
20. Do not touch the control panel with any sharp implements.
21. Do not place any metal on the unit while operating.

■ Control Panel and Operation Mode



- ① **On/Off button** : To turn the appliance on or off.
- ② **Function button** : Start the operation of different cooking mode.
- ③ **Lock button** : To enter or cancel Child lock mode (press 3 seconds to cancel).
- ④ **Time button** : To enter or cancel timer setting mode (press 3 seconds to cancel).
- ⑤ **Display** : LCD display
- ⑥ **"+" or "-" button** : To set the power level, temperature or cooking time.

■ Product Operating Instructions

1. Plug the cord into the 120 V wall outlet.
2. After plugging in, a "Beep" signal will be heard and all the indicators will flash once, indicating the appliance is connected to a power source. The ON/OFF indicator light will remain blinking.
3. Place a suitable cookware on the center of the cooking zone and press ON/OFF. The LCD display will light up and show the Menu in the middle.
4. Press the corresponding function key to start operation. 5 seconds after selecting the cooking mode, a "Beep" will be heard and then the unit will start to work under this cooking mode.
5. Stop the operation and switch to standby mode by pressing [ON/OFF] key after cooking.

Remarks:

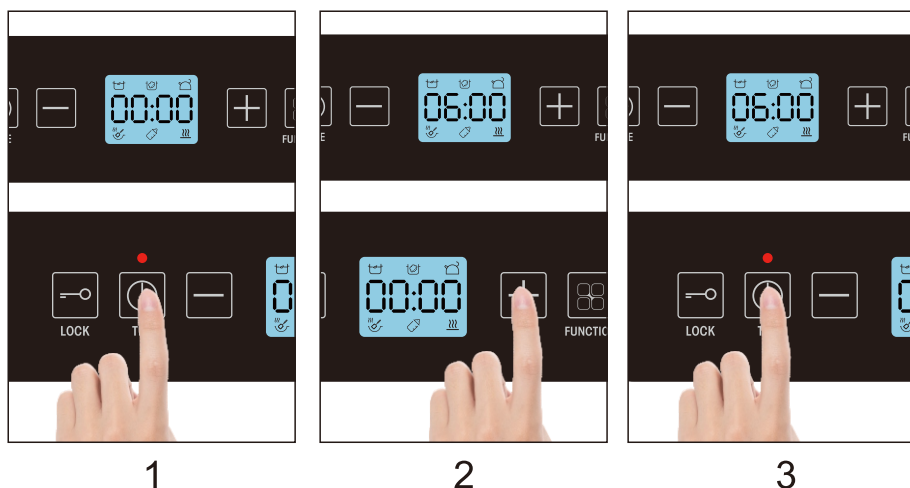
1. After pressing [ON/OFF] once, all the preset functions will show up in the display. When a certain preset function keeps flashing, it means that the induction burner is working under that specific function.
2. After selecting a preset mode, the unit will start to work after 5 seconds under that selected function.

■ Preset functions

- **SOUP:** Press the [FUNCTION] key once and the cooking mode of [SOUP] will keep flashing. LCD display will show [06] which is the default power level. Press [+] or [-] to select among the 9 power levels, including 01, 02, 03, 04, 05, 06, 07, 08, 09. The default cooking time is 2 hours and this time can be set by pressing [TIME] key.
- **SIMMER:** Press the [FUNCTION] key until the cooking mode of [SIMMER] is flashing, LCD display will show [05] which is the default power level. Press [+] or [-] to select among the 9 power levels, including 01, 02, 03, 04, 05, 06, 07, 08, 09. The default cooking time is 2 hours and this time can be set by pressing [TIME] key.
- **BOIL:** Press the [FUNCTION] key until the cooking mode of [BOIL] keeps flashing, LCD display will show [09] which is the default power level. This power level can't be adjusted. The default cooking time is 1 hour and this time can be set by pressing [TIME] key.
- **STIR-FRY:** Press the [FUNCTION] key until the cooking mode of [STIR-FRY] keeps flashing, LCD display will show [08] which is the default power level. Press [+] or [-] to select among the 9 power levels, including 01, 02, 03, 04, 05, 06, 07, 08, 09. The default cooking time is 2 hours but this time can also be set by pressing [TIME] key.
- **MILK:** Press the [FUNCTION] key until the cooking mode of [MILK] keeps flashing, LCD display will show [140F] which is the default temperature level for this function. The default cooking time is 1 hour and this time can't be set by pressing [TIME] key.
- **KEEP WARM:** Press the [FUNCTION] key until the cooking mode of [KEEP WARM] keeps flashing, LCD display will show [430F] which is the default temperature level for this function. Press [+] or [-] to select among the 9 temperature levels, including 140 °F, 175 °F, 210 °F, 250 °F, 300 °F, 350 °F, 390 °F, 430 °F, 465 °F. The default cooking time is 2 hours and this time can be set by pressing [TIME] key.

■ TIME Function

User can set the cooking time when power mode is selected. Press the [TIME] key once to access the timer function, the indicator light will light up. Display will show [00:00]. Press [+] and [-] to set the desired time by 1 minute. If keys [+] or [-] are hold; the time can be set quickly. The time can be adjusted from 1 minute to 6 hours. After setting, press [TIME] key once to confirm or wait until the display stop flashing. After the "Beep" signal, the appliance will switch off and stop the operation with the end of the countdown. To cancel this function, hold the [TIME] key for 3 seconds or press [ON/OFF] key to stop the operation.



Remarks:

- For the highest power levels (08 and 09) and the highest temp. levels (430 °F and 465 °F), the timer can be set up to 60 mins maximum.
- For other power/temp. levels, the timer can be adjusted quickly for 30 minutes when the user press and hold [+] or [-] key.

■ LOCK Function:

To activate the lock, press the [LOCK] key and the indicator of [LOCK] will light up, LCD display will show [LOC]. No function key will be allowed to operate. Hold for 3 seconds to unlock.

SELECTION OF COOKWARE

■ Material required:

- Steel, cast iron, enameled iron, stainless steel, flat-bottom pans/pots with bottom diameter from 12cm to 22cm.
- Please use the suggested pot, do not try to use other pots (especially pressure sensors vessels.)



Stainless Steel Pot



Iron Blast Pan



Magnetic Stainless Steel Pan



Iron Board Pan



Magnetic Stainless Iron Pan

Please kindly follow the below requirements if use the vessel not listed.

- Pan/pot must be suitable for induction cooker.
- Pan/pot should be tried out first if it's bought by yourself to see if there are unusual phenomena.
- Pan/pot bought by yourself should be flat and come with the cover with gas vent.

1. Remove the power plug prior to clean the unit. Do not clean it until the surface cools down.
2. Glass plate, panel and the shell:
 - Soft cloth for slight stain.
 - For greasy, dirt, blot by using a clean damp cloth with neutral detergent.
3. While the radiator-fan working, dust and dirt would remain on the gas vent, please clean it by brush or cotton stick regularly.
4. Remember do not washing the unit by water directly to avoid damaging.
5. To protect induction cooker, be sure to have a good contact between plug and socket before using.
6. Do not pull out the power cord directly during operation. To extend the appliance's using life, press the "ON/OFF" button first, then pull out the power cord.
7. In order to make operating time longer, the fan would still working for cooling the plate, is better to plug out after the fan stops working.
8. Please pull out the power cord and put it away when not used for a long time.
9. Some models have structural design to against cockroaches, if needed, can put something like mothball to expel the cockroaches.

- **During operations, if any error occurred, please check the following table . Below are common errors and the checks to perform.**

Symptoms	Check points	Remedy
After connecting the power and pressing the "power" key, the appliance has no response.	Is the electricity in suspension?	Use after resuming the electricity.
	Is the fuse broken down?	Check the root causes carefully. If the problem cannot be fixed, please contact Service Centre for checking and repairing.
	Is the plug connected firmly?	
Heating being interrupted in normal use and a "Beep" will be heard.	Incompatible cookware or no cookware is used?	Replace compatible cookware for the induction cooker.
	Is the cookware not considerably placed form the center of the heating zone?	Place the cookware at the center of the defined heating zone.
	Is the cookware being heated but continually being removed?	Place a cookware inside the heating zone.
No operation during the heating being in use.	Is the cookware empty or the temperature too high?	Please check whether the appliance is being misused.
	Is the air intake/exhaust vent clogged or dirt has accumulated?	Remove the stuff clogging the air intake/exhaust vent. Operate the appliance again after cooling
	Is the cooker working over 2 hours without any external instruction?	Reset cooking modes or use timer function.

Symptoms	Check points	Remedy
<p>Error codes occur.</p>	<p>E0 Internal circuit error PAN Without cookware or Incompatible cookware used E2 Internal overheat E3 Over-voltage E4 Under-Voltage E5 Top plate sensor open/short circuit E6 IGBT sensor open circuit/short circuit E7 Top plate overheat</p>	<p>When showing error signal E1, E2 and E7, please check whether the cookware is not suitable, or switch on the appliance again after it is cooled down naturally. When showing E0, E3-E6, please contact Service Centre for checking and repairing.</p>

If the above remedies/controls can not fix the problem, unplug the appliance immediately, contact Customer Service for inspection and repairing, note the error code and report it to Customer Service. To avoid any danger and damage to the appliance, do not disassemble or repair it by yourself.

2 YEARS WARRANTY



This product is covered by 2 years limited warranty from the date of purchase subject to the below conditions:

- ① The product is free of defects in materials and workmanship by manufacturer.
- ② This product is being correctly used according to our user manual.

LIMITATIONS:

- ① Product misuse, abuse, negligence, accident, repairs, alterations, or lack of maintenance.
- ② Our warranty policy is limited to purchase made from us(GIVENEU). If you purchase from a different retailer, please contact them directly. Unauthorized reselling of GIVENEU products is prohibited.
- ③ Warranty-related shipping costs can only be covered in the country of purchase. If the product is taken outside the country of purchase, any shipping costs will be the buyer's responsibility.

Friendly reminder: When contacting us for help, be sure to provide the Order ID for a fast solution.

CONTACT US:

We would love to hear from you. Please contact us a support@giveneuhq.com for any inquires.

Give you a new life experience

Subscribe us for more deals and news!



Follow Us@giveneu