

GIVENEU

Electric Conical Burr Coffee Grinder

Give you a new life experience



Before using please read the instruction manual and keep it for future use

www.giveneuhq.com

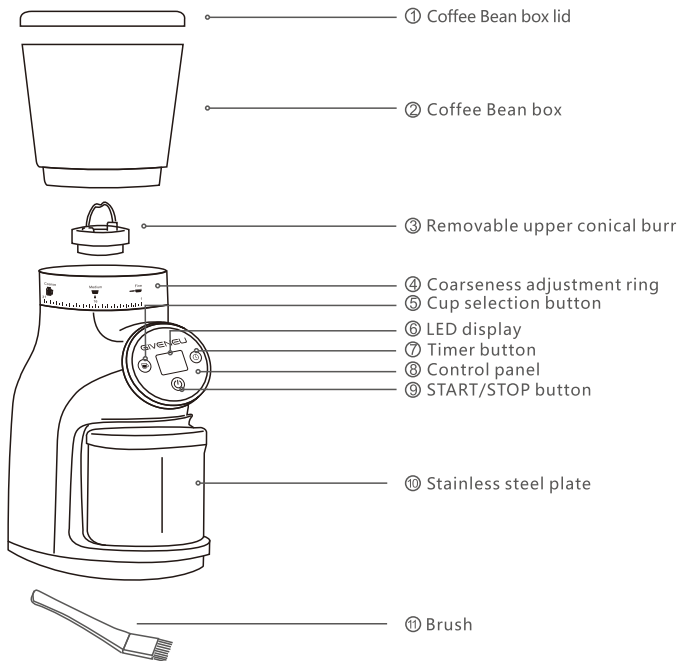
IMPORTANT SAFEGUARDS

When using electrical appliances, basic safety precautions should always be followed:

- Read all instructions.
- To protect against fire, electric shock and injury to persons, do not immerse cord, plugs or machine in water or other liquid.
- Close supervision is necessary when any appliance is used by or near children.
- Unplug from outlet when not in use, before putting on or taking off parts, and before cleaning. To unplug, grasp plug and pull from electrical outlet. Never pull cord.
- Avoid contact with moving parts.
- To reduce the risk of severe injury to persons or damage to the appliance, keep hands and utensils out of the coffee bean box while grinding, and when the appliance is plugged in.
- Do not operate the grinder with a damaged cord or plug or after the appliance malfunctions, or is dropped or damaged in any manner. In this case, return the appliance to the approved Service Center for examination, repair, or electrical or mechanical adjustment.
- Do not operate the appliance when empty.

- The use of attachments not recommended or sold by may cause fire, electric shock or injuries.
- Do not use outdoors.
- Do not let cord hang over edge of table or counter or touch hot surfaces, including the stove.
- Check Coffee bean box for presence of foreign objects before using.
- Always operate the burr grinder with the lid securely in place.
- Do not place on or near a hot gas or electric burner or in a heated oven.
- This product has been designed for **household use** only. Any commercial use, inappropriate use or failure to comply with the instructions will void the manufacturer's Warranty.
- **This appliance is only used for roasted coffee beans grinding. Do not use the appliance for other intended use (such as hard seeds, spice, nuts, etc.).**
- Every appliance is inspected strictly during mass production, and be tested with coffee beans for grinding, which may cause slight traces of use or residual coffee grounds.
- All machines are subject to stringent quality control. Practical tests using machines taken at random are conducted and this may explain any slight marks or coffee residue showing prior to use.

DESCRIPTION



Caution:

Power saving mode: If there is no operation over 3 minutes, the machine will turn to "Power Saving Mode" automatically. To restart the machine, please just press on any button.

SAVE THESE INSTRUCTIONS

■ CAUTION:

This appliance is for household use only. Any servicing other than cleaning and user maintenance should be performed by the nearest authorized Service Center.

- Do not immerse appliance in water.
- To reduce the risk of fire or electric shock, do not dismantle the appliance. Repair should be done by an authorized Service Center only.

■ SHORT CORD INSTRUCTIONS:

Regarding your Cord Set:

- A short power-supply cord is provided to reduce the risks resulting from becoming entangled in or tripping over a longer cord.
- Extension cords should be used with caution.
- If an extension cord is used, (1) the marked electrical rating of the extension cord should be at least as great as the electrical rating of the appliance.(2) if the appliance is of the grounded type, the extension cord should be of a grounded type.(3) the longer cord should be arranged so that it will not drape over the counter top or table top where it can be pulled on by children or tripped over.

■ POLARIZED PLUG:

- This appliance has a polarized plug (one blade is wider than the other), to reduce the risk of electrical shock. This plug will fit into a polarized outlet only one way.
- If the plug does not fit fully into the outlet, reverse the plug. If it still does not fit, contact a qualified electrician. Do not modify the plug in any way.

ABOUT GRINDING COFFEE




- The proper grind gives the most flavorful cup of coffee. The grind size and amount depend on the method by which the coffee is to be brewed. Generally, the finer the grind the more quickly the coffee should be prepared. That is why coffee ground for an espresso machine extraction is much finer than coffee to be brewed in a drip system.
- Coffee that is ground too fine for a particular brewing process - (For example, fine espresso grind used in a filter drip coffee machine) will result in over-extraction and bitter, pungent tasting coffee. Conversely, coffee that is too coarse for a particular brew method will result in under-extraction and weak, watery coffee. If the correct grind is used, adding more coffee simply makes a brew stronger without making it bitter.
- In addition to providing a range of grind settings, coffee grinders provide a consistent grind. This is important to ensure the extraction is consistent across all of the ground coffee particles.

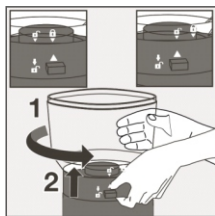
BEFORE FIRST USE

Before using the coffee grinder, wipe the housing and Coffee bean box with a clean damp cloth. Wash the coffee powder jar and the coffee powder jar lid in hot soapy water, then rinse and dry.

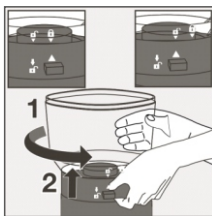
SET THE COFFEE BEAN BOX

How to remove the Coffee bean box

1. Make sure the coffee grinder is unplugged.
2. Press the Coffee bean box release lever located at the opposite  of the grinding size markings.
3. Turn the Coffee bean box counter-clockwise until the unlock icon  aligns with the arrow  and lift it up.







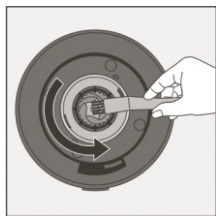
A



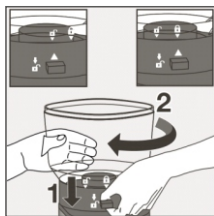
B

How to assemble the Coffee bean box

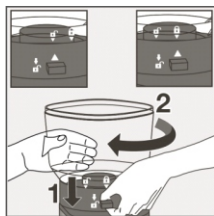
1. Make sure the top part of the conical burr is clear. If not, pls use the brush provided to clean the top part of the burr.
2. Align the unlock icon  on the base with the arrow  on the Coffee bean box.
3. Turn the Coffee bean box clockwise until the lock icon  aligns with the arrow .



A



B



C



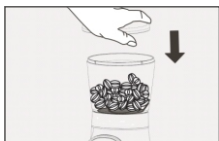
NOTE: If the coffee bean box is not assembled properly, the coffee grinder won't work.

SET COFFEE GRIND SIZE

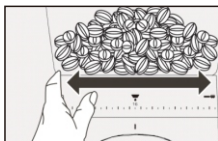
1. Put the coffee powder jar at the correct position.
2. Fill coffee beans into coffee bean box, close the lid.
3. The coffee grinder has 31 grind size options. To adjust the grind size, rotate the coffee bean box and adjust from fine to coarse according to the type of coffee you want.



A









B



C

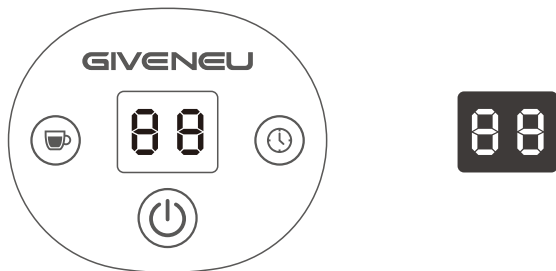
See chart below:

GRIND SIZE SETTING RECOMMENDATIONS

Coffee Type	Cezve	Espresso	Siphon	Drip Coffee	Pour Over	French Press
						
Grind Size	Fine	Middle Fine	Middle	Middle	Middle Coarse	Coarse
Grind Setting	1-2	3-5	6-10	11-20	17-25	26-31




OPERATION INSTRUCTIONS

■ Control panel instruction



■ Button instruction

This unit has 3 buttons below:

-  – Cup selection button: cup setting from 1 to 10 cups.
-  – Timer button: grinding time setting from 1 to 25 seconds
-  – Start / stop button

■ Instructions

- Add coffee beans into the coffee bean box.
- Select the coarseness by rotating the coarseness adjustment ring.
- Power on the unit, the buzzer sounds one time and the LED display shows "01" , which means entering "Cup selection mode" and it prepares one cup coffee powder.

■ Cup selection button



- When press "Cupselectionbutton" ,LED displays "01".
- Default setting range is 1-10 cups, press this button each time to add 1 cup, it shows 01.02.03.04....10. After selecting the number of cups you like, press "start button" to start grinding.
- If you want to stop grinding during operation, press "Start/stop button" one more time.

■ Timer button



- When selecting "Timer button", LED displays "00".
- Press "start button" to start grinding.
- If you want to stop grinding during operation, press "Start/stop button" one more time.
- The max grinding time is 25 seconds. The unit will stop grinding after 25s automatically.

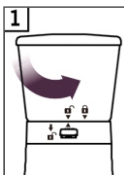
■ Start/stop button



- After selecting "Cupselectionbutton" or "Timerbutton", press "Start/stopbutton" to start grinding.
- If you want to stop grinding during operation, press "Start/stop button" one more time.

CLEANING CONICAL BURRS

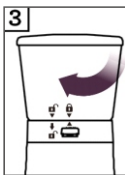
Regular cleaning helps the burrs achieve consistent grinding results which is especially important.



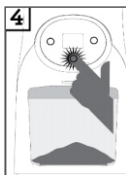
Unlock
Bean Box



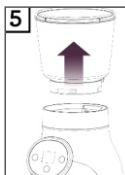
Remove
Beans



Lock Bean
Box



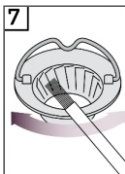
Run Grinder
Until Empty



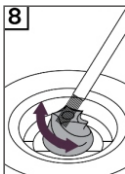
Remove Bean
Box



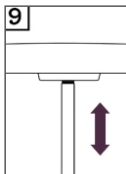
Remove Upper
Burr



Clean Upper
Burr With
Cleaning Brush



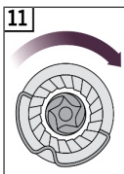
Clean Lower
Burr With
Cleaning Brush



Clean Grind
Outlet With
Cleaning Brush



Push Upper
Burr Firmly into
Position



Lock Upper
Burr



Align Bean Box
Into Position



Lock Bean
Box

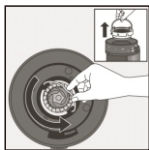
IMPORTANT

For your appliance to run correctly, make certain that:

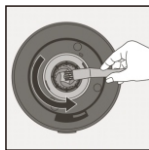
- The lid to the coffee bean box is correctly closed.
- The coffee powder jar and its lid are correctly placed in the body of the appliance.
- This appliance is equipped with an overheat protective device. If the appliance overheats, it will switch off automatically. In this case let it cool down for 30 minutes then restart.

MAINTENANCE

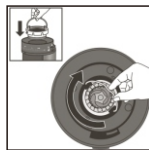
- To keep all your coffee's aroma and to avoid a degradation of the ground coffee, empty the ground coffee container after each use.
- Always unplug from the power outlet before cleaning.
- Never place the grinder, power supply cord or plug in water or under running water.
- Do not use strong detergents or abrasive pads to clean the appliance.
- Clean the lids and the ground coffee holder in warm, soapy water.
- To remove the upper burr, hold of the upper mill and turn counter clockwise, then raise it vertically to remove.(Picture A)
- Clean the upper burr with the cleaning brush (k).(Picture B)
- Carefully clean the inside of the coffee bean box with a damp cloth.
- To replace the upper burr, insert the burr and turn it once in the clockwise direction. For proper alignment, residual coffee and coffee grounds in the lower burr will need to be cleared.(Picture C)



Picture A



Picture B



Picture C



TROUBLESHOOTING GUIDE

Code In Display	Trouble Description	Trouble Solution
E1	No bean holder or bean holder is not connected tightly.	Assembly the bean holder or tighten the bean holder until the micro switch is closed, once bean holder is close then error code E1 in display disappears.
E2	Total operating is 5 cycles, it power off automatically to protect the unit.	Unplug power cord, waiting for it cooling down, then restart.
	Motor is overheating.	Waiting for motor cooling down over 30 minutes and restart.

This appliance shall not be used by children. Keep the appliance and its cord out of reach of children.

Appliances can be used by persons with reduced physical, sensory or mental capabilities or lack of experience and knowledge if they have been given supervision or instruction concerning use of the appliance in a safe way and if they understand the hazards involved.

Children shall not play with the appliance.

Correct Disposal of this product	
 	This marking indicates that this product should not be disposed with other household wastes throughout the EU. To prevent possible harm to the environment or human health from uncontrolled waste disposal, recycle it responsibly to promote the sustainable reuse of material resources. To return your used device, please use the return and collection systems or contact the retailer where the product was purchased. They can take this product for environmental safe recycling.

1 YEAR WARRANTY

This product is covered by 1-year limited warranty from the date of purchase subject to the below conditions:

- ① The product is free of defects in materials and workmanship by manufacturer.
- ② This product is being correctly used according to our user manual.

Limitations:

- ① Product misuse, abuse, negligence, accident, repairs, alterations, or lack of maintenance.
- ② Our warranty policy is limited to purchase made from us(GIVENEU). If you purchase from a different retailer, please contact them directly. Unauthorized reselling of GIVENEU products is prohibited.
- ③ Warranty-related shipping costs can only be covered in the country of purchase. If the product is taken outside the country of purchase, any shipping costs will be the buyer's responsibility.

Friendly reminder: When contacting us for help, be sure to provide the Order ID for a fast solution.

Contact Us:

We would love to hear from you. Please contact us at **support@giveneuhq.com** for any inquires.

Give you a new life experience

Subscribe us for more deals and news!



Follow Us@giveu