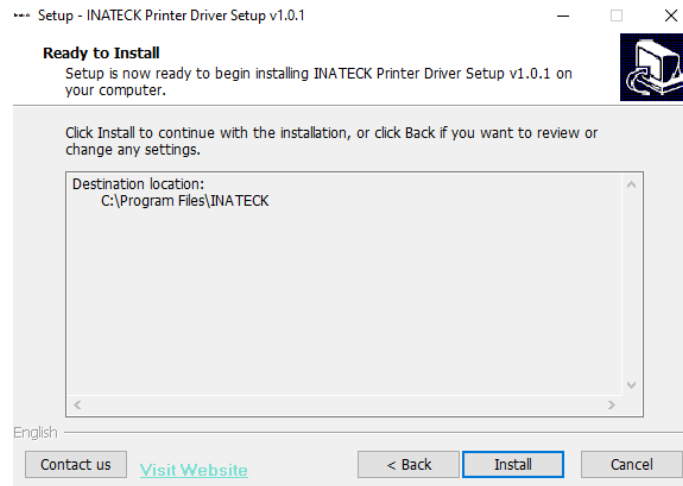


# Install Driver on Windows

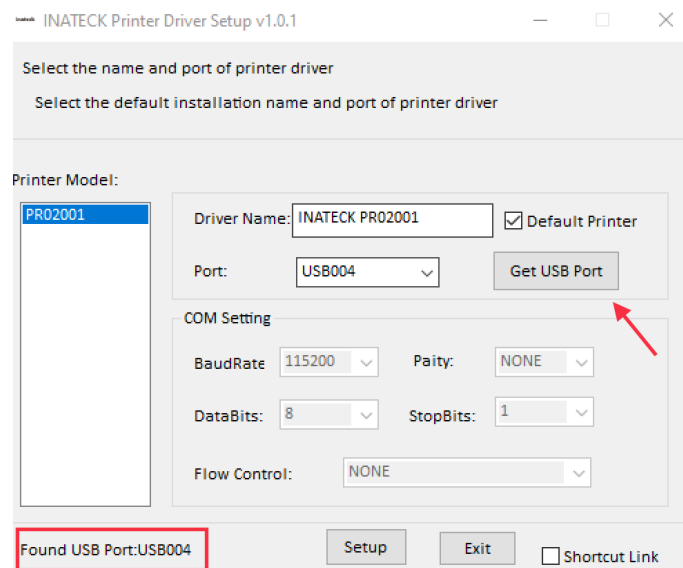
The driver supports Windows XP, Windows 7, Windows 8 and Window 10.

Step 1. Connect the printer to the USB port of your computer and turn the printer on.

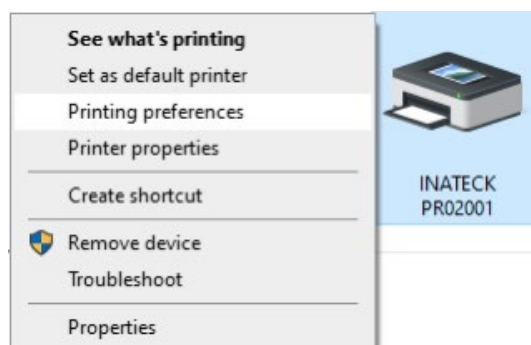
Double click the Windows driver and click "Install" button to continue.



Select printer model in the list. The driver can detect USB port automatically. If not, click "Get USB Port" button

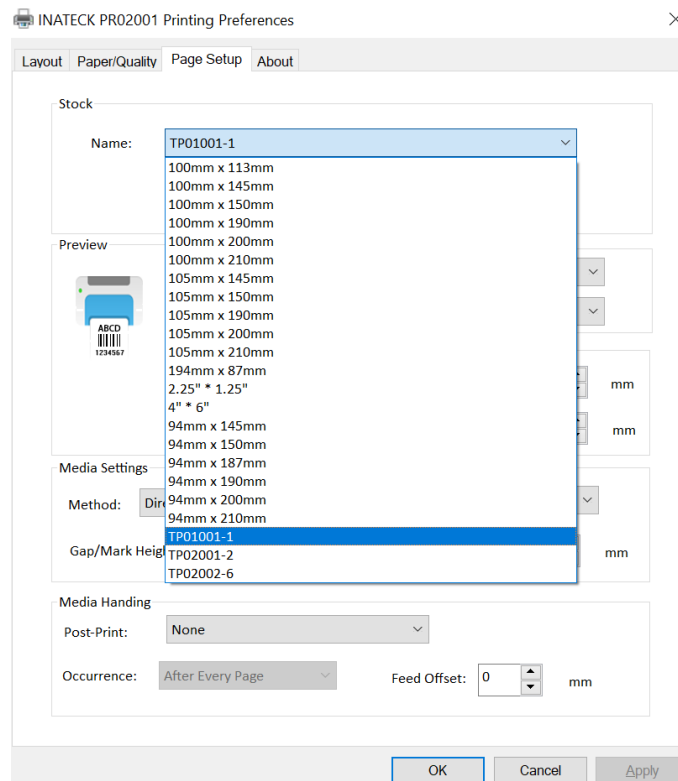


step 2. After installation, go to "Control Panel ", and then open "Devices and Printers", right click "INATECK PR02001" and choose Printing Preferences.

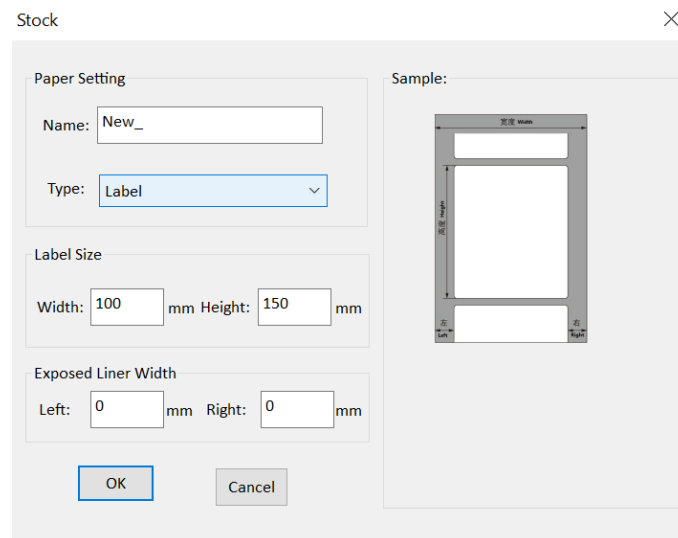


Click "Page Setup" sheet and change the setting of the printer.

You can choose the paper size "TP01001-1" or "4 \* 6". (the TP01001-1 is the model of our direct thermal paper, whose size is 4 \* 6 inches)



You can also create custom-sized label after clicking "New" button.



Enjoy your printing now!