

FCC Declaration of Conformity

This device complies with Part 15 of the FCC Rules

Operation is subject to the following two conditions:

- (1) This device may not cause harmful interference, and
- (2) This device must accept any interference received, including interference that may cause undesired operation.

EU/UK Declaration of Conformity

Inateck Co., Ltd. hereby declares that this device complies with the Directive 2014/30/EU and SI 2016 No. 1091.

A copy of the Declaration of Conformity can be accessed from <https://www.inateck.de/pages/euro-compliance>.



Service Center

Europe

F&M Technology GmbH

Tel: +49 341 5199 8410 (Working day 8 AM - 4 PM CET)

Fax: +49 341 5199 8413

Address: Fraunhoferstraße 7, 04178 Leipzig, Deutschland

North America

Inateck Technology Inc.

Tel: +1 (909) 698 7018 (Working day 9 AM - 5 PM PST)

Address: 2078 Francis St., Unit 14-02, Ontario, CA 91761, USA

日本

Inateck 株式会社

電話番号: +81 06 7500 3304

〒 547-0014 大阪府大阪市平野区長吉川辺 3 丁目 10 番 11 号

EC	REP	F&M Technology GmbH Fraunhoferstraße 7, 04178 Leipzig, Deutschland Tel: +49 341 5199 8410
----	-----	---

UK	REP	Inateck Technology (UK) Ltd. 95 High Street, Office B, Great Missenden, United Kingdom, HP16 0AL Tel: +44 20 3239 9869
----	-----	---

Manufacturer

Shenzhen Inateck Technology Co., Ltd.

Address: Suite 2507, Block 11 in Tian An Cloud Park, Bantian Street, Longgang District, Shenzhen, Guangdong, China

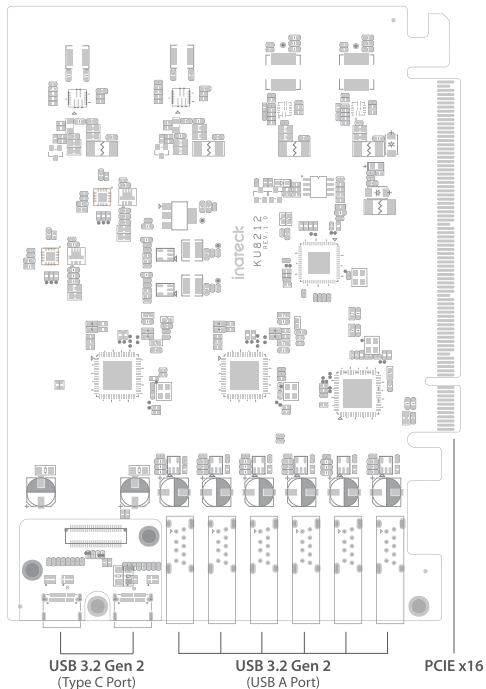
inateck®

Installation Guide

PCI-E to USB 3.2 Gen 2 Card

KU8212

**Overview / Übersicht / 製品図 / Aperçu / Panorámica /
Cómo se presenta**



EN Package List	
1 X USB 3.2 Gen 2 PCI E Card	1 X Screwdriver
1 X Back plate	4 X Screws
1 X Installation guide	

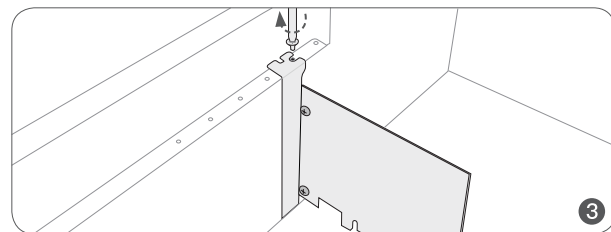
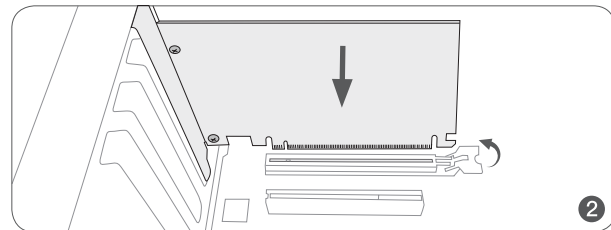
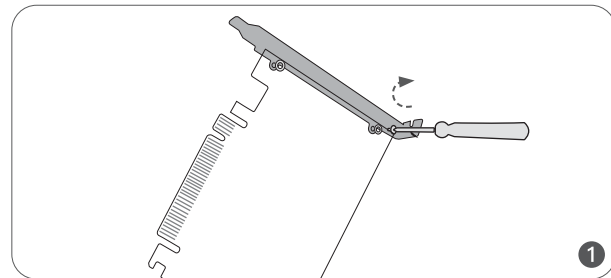
DE Packliste	
1 X USB 3.2 Gen 2 PCI Express Karte	1 X Schraubenzieher
1 X Rückplatte	4 X Schrauben
1 X Installationsanleitung	

JP パッケージリスト	
1 X USB 3.2 Gen 2 PCI Express カード	1 X ドライバー
1 X バックプレート	4 X ねじ
1 X インストールガイド	

FR Dans l'emballage	
1 X Carte PCI Express USB 3.2 Gen 2	1 X Tournevis
1 X Plaque arrière	4 X Des vis
1 X Guide d'installation	

IT Contenuto del Pacco	
1 X Scheda PCI Express USB 3.2 Gen 2	1 X Cacciavite
1 X Piastra posteriore	4 X Viti
1 X Guida d'installazione	

ES El paquete contiene	
1 X Tarjeta PCI Express USB 3.2 Gen 2	1 X Destornillador
1 X Placa trasera	4 X Empulgueras
1 X Guía de instalación	



说明书尺寸：折后 120*90mm

材质：100g 双胶纸

此页不做印刷