

# Bluetooth scanner -> offline mode

If you are heading for a working area which lies outside the Bluetooth signal range, you may activate the offline mode of the scanner, following the steps described below. Under this enhanced offline mode, all scanned data will be stored directly into the buffer memory of the device. Furthermore, the data entries will be permanently saved in the buffer memory prior to the manual upload into the working station, so that you may upload them time and again to your liking.

Due to the fact that the data entries will be automatically wiped from the buffer memory during upload, a data loss is possible when malfunctions occur during upload, e.g. if the working station suffers a unanticipated system shut down.

An operation in offline mode is strongly recommended under the following scenarios:

- 1) During the scanning process, the device often leaves the Bluetooth signal range;
- 2) Due to a high quantity of blocking objects, the Bluetooth signal's stability can't be ensured.

1. By scanning the following barcode, the offline mode will be activated.



Offline mode activation

2. By scanning the following barcode, all data in the buffer memory will be deleted (only in offline mode).



Buffer data purge

3. By scanning the following barcode, all data entries in the buffer memory can be manually uploaded after reconnecting to the working station (only in offline mode).



Manual data upload

4. By scanning the following barcode, the gross quantity of the uploaded data entries will be summarised (only in offline mode).



Summarising of uploaded data entry quantity

5. By scanning the following barcode, the device leaves the offline mode, normal mode will be reinitialised.



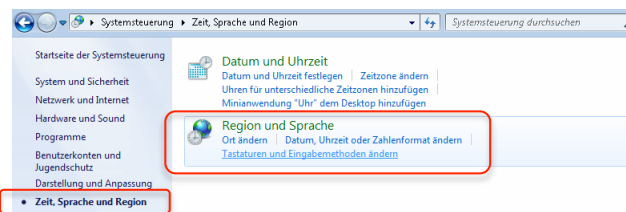
Quit offline mode

# Guide for the configuration of english keyboard layout under non english operating systems

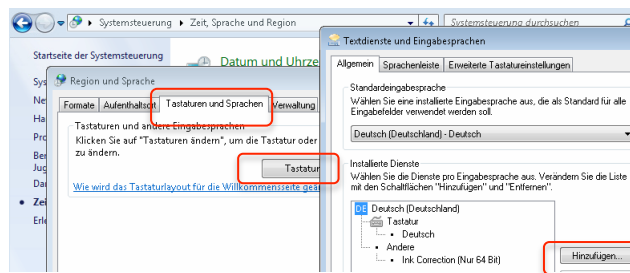
Please note: This scanning device can only operate correctly using an english keyboard layout. To configure such a layout, please follow the steps described hereafter, as to avoid input errors.

## Windows 7 (German)

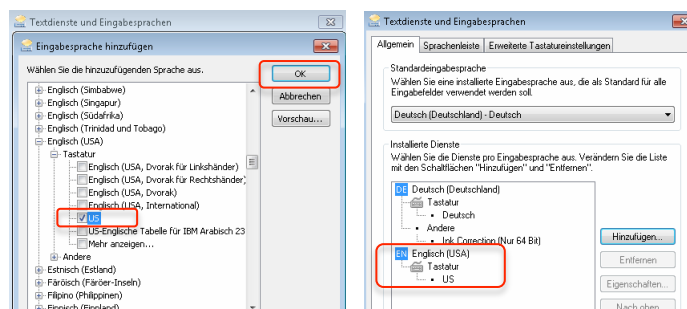
- 1) Go to "Start" and initialise "System dashboard". Search for "Time, language and region". Then, please click on "Region and language".



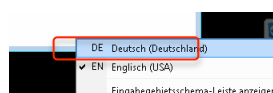
- 2) Please choose "Change keyboard and input method", then click on "Change keyboard".



- 3) Please click on "Add", search for "English (US)", mark "US" in the keyboard input list, add it by clicking "OK".

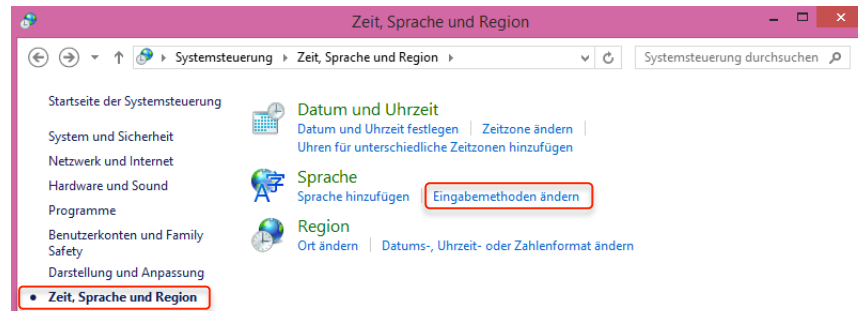


- 4) The menu of the language symbol in the status bar should now show "EN", so that you may swap between the keyboard layouts more comfortably by pressing [Alt+Shift].

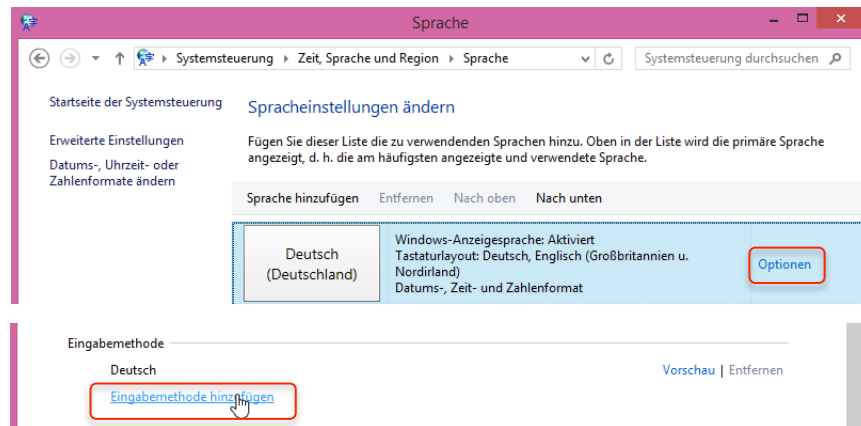


## Windows 8 (German)

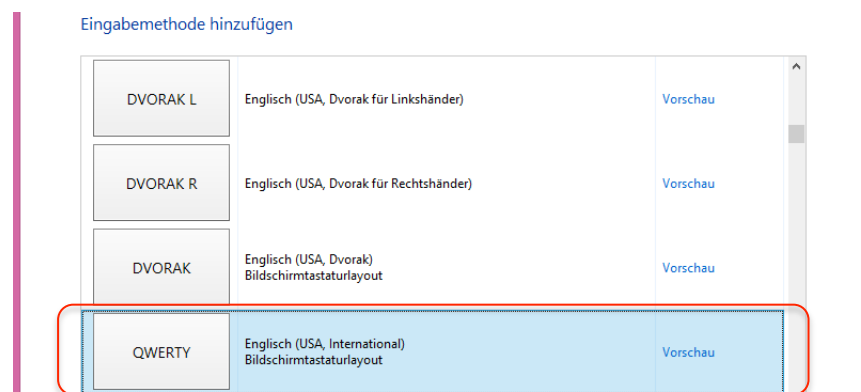
- 1) Please open the "System dashboard", choose "Time, language and regions", click on "Change input method" under the menu "Language".



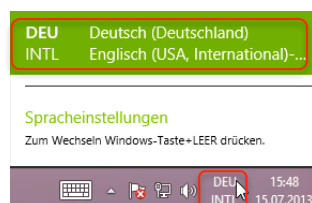
- 2) Please click on "Options" on the right side, then click on "Add input method" in the input method summary.



- 3) Search for "QWERTY – English" in the index, add this input method and save the preferences.

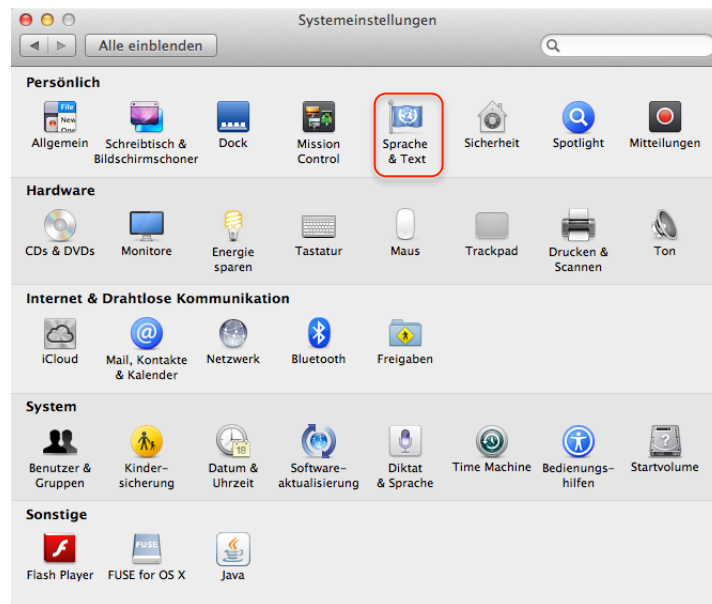


- 4) In the input method menu on the desktop, a additional "DEU INTL" is now shown, so that changing of the keyboard layout is now possible.

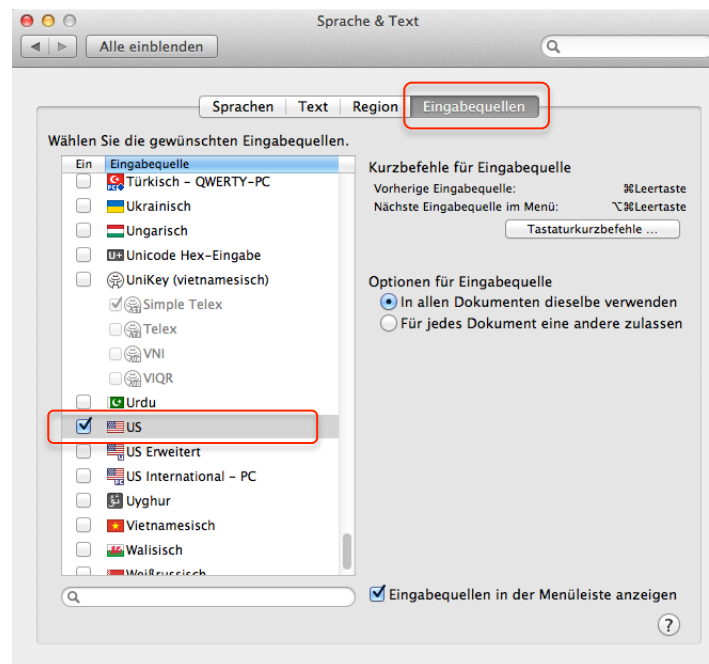


## MacOS-X (German)

- 1) Go to "System preferences", please choose the menu function "Language and text".



- 2) Choose the menu tab "Input sources", search for "US" and mark it.



- 3) Choose the menu tab "Input sources", search for "US" and mark it.

