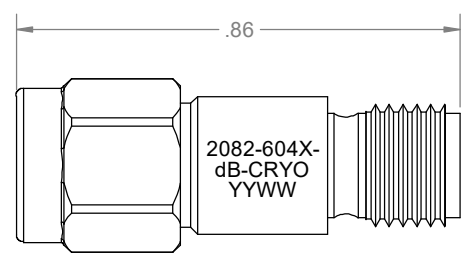
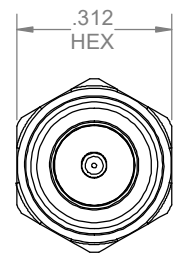


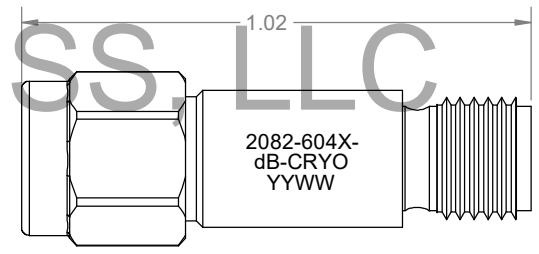
ELECTRICAL	
FREQUENCY RANGE	DC - 18 GHz
ATTENUATION ACCURACY	
0 - 6 dB	±0.30 dB
7 - 20 dB	±0.50 dB
21 - 30 dB	±0.75 dB
VSWR	
DC - 4 GHz	1.15:1 MAX
4 - 12.4 GHz	1.25:1 MAX
12.4 - 18 GHz	1.35:1 MAX
INPUT POWER	2 WATTS
DERATES LINEARLY FROM 100% @ +25°C TO 10% @ 125°C	
PEAK POWER	500 WATTS
(5µSec PULSE WIDTH, 0.1% DUTY CYCLE)	
IMPEDANCE	50 OHMS
OPERATING TEMP RANGE	4 KELVIN TO +125°C
	150° STORAGE



REVISIONS				
REV	DESCRIPTION	ECO #	DATE	APPROVED
D	DUTY CYCLE WAS .01%	16-036	2/19/16	T.KUHN
E	CHANGED ASSY # IN BOM	17-063	5/2/17	T.KUHN
F	ADDED RoHS STATEMENT	17-096	6/14/16	T.KUHN
G	MODIFIED BOM	18-141	9/20/18	T.KUHN

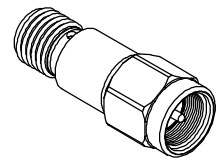


MECHANICAL	
CONNECTOR BODIES	PASSIVATED STAINLESS STEEL
CENTER CONDUCTORS	GOLD PLATED BERYLLIUM COPPER
INSULATORS	PTFE (TEFLON) IAW ASTM-D1710
RESISTIVE ELEMENT	THIN FILM HYBRID ON 99.6% ALUMINA SUBSTRATE
RoHS COMPLIANT DEVICE	
CONNECTOR INTERFACES IAW MIL-STD-348 & MIL-PRF-39012	
MATERIALS, FINISHES AND ENVIROMENTAL CAPABILITIES DESIGNED TO MEET MIL-DTL-3933	



**B MARKING**

PART LOOKS LIKE PRODUCT IMAGE ABOVE.  
 PART MARKING ORIENTATION AND FORMAT AS SHOWN.  
 CHANGE X TO THE ONE DIGIT VALUE ON WORK ORDER.  
 REPLACE dB WITH APPROPRIATE TWO DIGIT dB VALUE.  
 MARKING TO BE AS LARGE AS POSSIBLE, CLEAR, READABLE.  
 YYWW EQUALS DATE CODE.



0 dB	1-30 dB	PART NUMBER	DESCRIPTION	ITEM NO.
X	X	2082-604X-dB-CRYO	ATTENUATOR, SMA-m/f, DC-18 GHz, 2W, CRYOGENIC	
-	1	TA-2082-6000-dBAU-CRYO	ASSEMBLY, ATTENUATOR, SMA-m/f, DC-18 GHz, 2W, UNMARKED	
1	-	TA-2082-6040-00U	ASSEMBLY, ATTENUATOR, SMA-m/f, DC-18 GHz, 2W, UNMARKED, 0 dB	

dB VALUES 2082:	1 dB STEPS, 18GHz 2082:
-00/-03 = 0 THRU 3dB	-6040-00 THRU 03
-04/-06 = 4 THRU 6dB	-6041-04 THRU 06
-07/-10 = 7 THRU 10dB	-6042-07 THRU 10
-11/-12 = 11 AND 12dB	-6043-11 AND 12
-13/-20 = 13 THRU 20dB	-6043-13 THRU 20
-25 & -30dB	6044-25 & -30

DRAWING PRACTICES PER ANSI-Y-14.5 MIL-STD-100 & 1000

DIMENSIONS ARE IN INCHES AND APPLY BEFORE / AFTER PROCESSING

SURFACE ROUGHNESS  $\mu$ INCHES **63**

FINISH:

SEE NOTES

MATERIAL:

SEE NOTES

NOTE:  
THIS DRAWING INCORPORATES THIRD ANGLE PROJECTION.

INTERPRET IAW ANSI Y14.5-1982

UNLESS OTHERWISE SPECIFIED TOLERANCES IN:

DECIMALS	INCH	(MM)
.X"	.05"	[1.27]
.XX"	.03"	[.76]
.XXX"	.010"	[.25]

ANGLES ±0°30'

REMOVE ALL BURRS/SHARP W/ BREAK / R OF .003" TO .0005"

UNLESS OTHERWISE NOTED DIAS CONCENTRIC <.003 T.I.R.

DO NOT SCALE PRINT

DRAWN DATE  
V.SHELBY 2/20/13

CHECKED DATE  
T.KUHN 2/20/13

ENG. APPR. DATE  
T.KUHN 2/20/13



Phone: 603-222-2256 Fax: 603-222-2259  
 150 Dow Street, Manchester, NH 03101

ATTENUATOR, SMA-m/f, DC-18GHz, 2W, CRYOGENIC

SIZE	CAGE CODE	DRAWING NUMBER	REV
B	3HT76	2082-604X-dB-CRYO	G
SCALE	PLATED AREA SQ. IN	SHEET 1 OF 1	