

Electric Tricycle User Manual



Read Carefully Before Use
Keep for Future Reference

CONTENTS

Safety Information	1
Specifications	2
Package List	2
Assembly	5
1. Rear and Main Frames	5
2. Handlebars	6
3. Rear Wheels	7
4. Front Wheel	8
5. Chain	9
6. Chain Guard	10
7. Seat	10
8. Pedals	11
9. Rear Reflectors	11
10. Rear Fenders, Supports, and Stays	12
11. Front Brake, Fender, Light, and Stay	14
12. Rear Brake	15
13. Basket	15
14. Spoke Reflectors	16
15. Battery	16
Operation	17
Maintenance	18
Contact Information	18

Safety Information

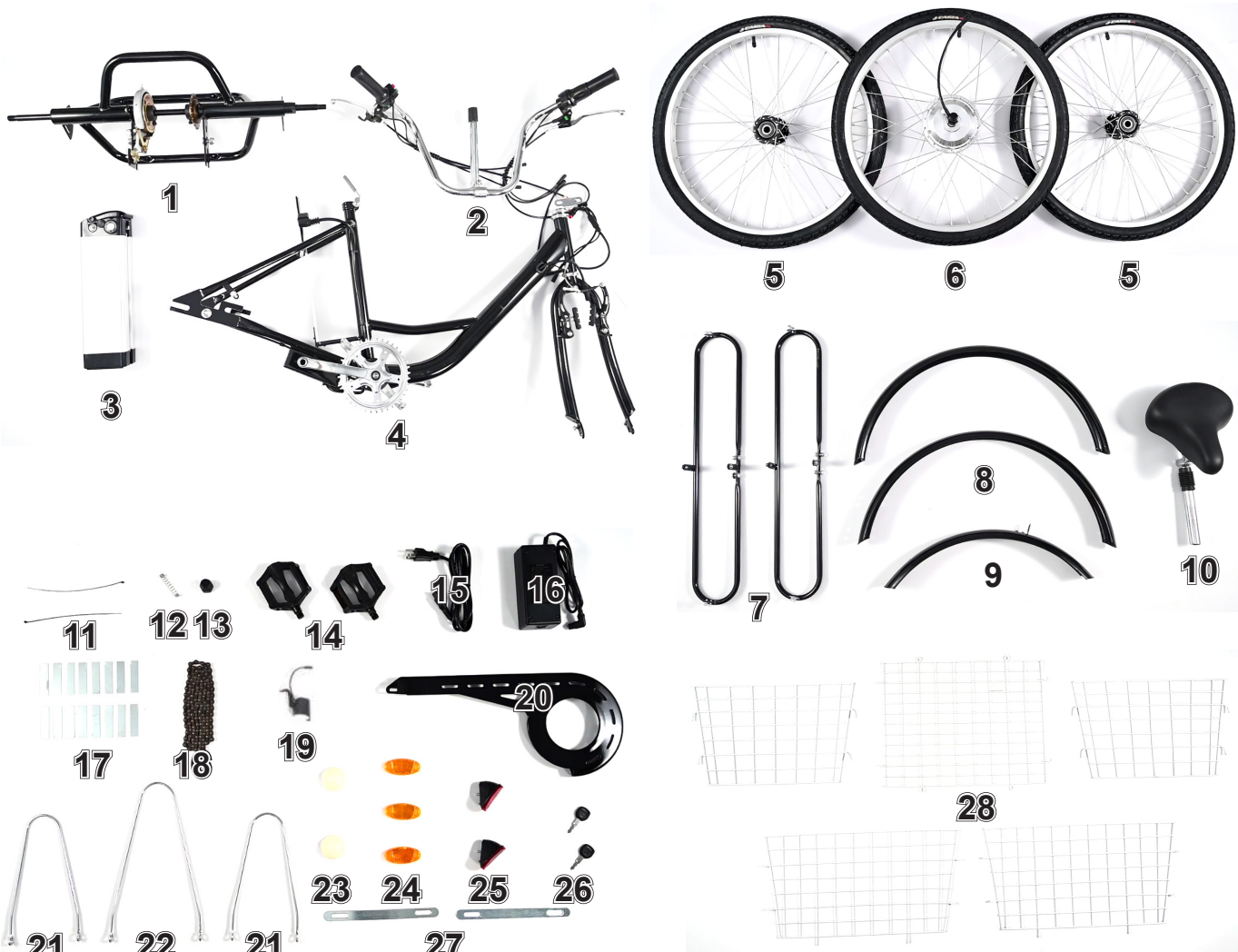
Warning!

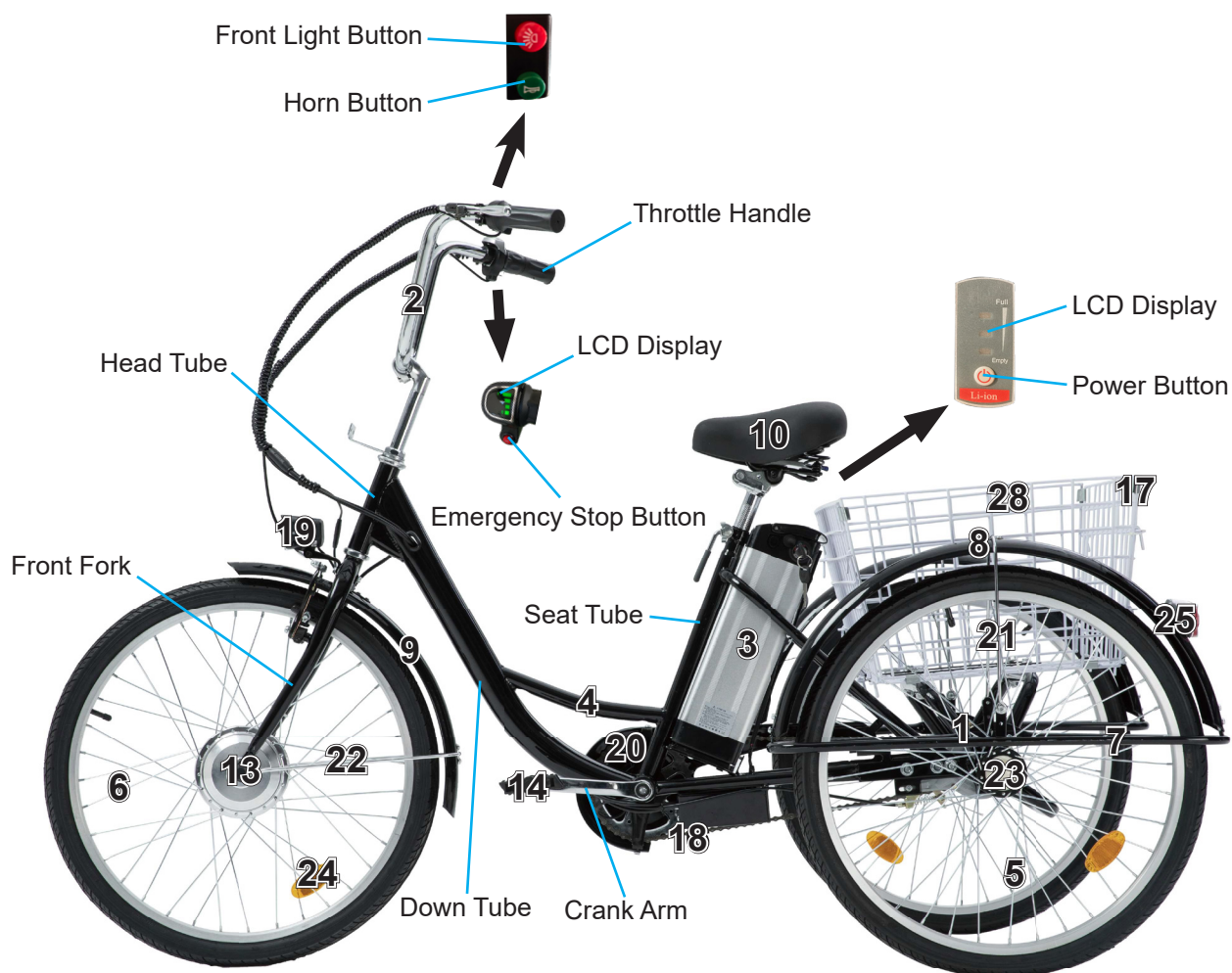
- Install and adjust this tricycle **ONLY** in accordance with these instructions. Read them completely prior to installation and use. Contact customer service if any point is unclear.
- **ALWAYS** obey all applicable local and national laws and regulations while riding. Do not ride this tricycle in any area prohibited to electric bicycles or tricycles. Always wear your helmet and other required protective gear. Always maintain your reflectors and other required safety equipment.
- Check whether the brakes function well using the brake levers before riding. Even after power is cut to the motorized wheel, the inertia of the tricycle will often require active braking power.
- **ALWAYS** ensure all fasteners and components are intact and securely tightened before and after every use.
- **DO NOT** ride this tricycle if any part is damaged or malfunctions. Repair or replace worn and broken parts before further use.
- Pay attention to the remaining power before setting out and during use. Recharge your battery as needed to ensure it never runs out of power at a moment where you are taken by surprise.
- **DO NOT** allow children or persons unfamiliar with these instructions to operate this tricycle without strict supervision.
- **DO NOT** wear loose footwear or clothing that may become caught in the wheels or any other moving parts.
- It is recommended that you not ride your tricycle fast until you are fully familiar with your new electric tricycle and its controls.
- **ALWAYS** be alert for people, animals, or any obstacles that may appear in front of you while riding your tricycle. Be aware that pedestrians and drivers may not expect the speed or responsiveness of your tricycle. Adjust your behavior accordingly. It is advisable to install warning devices to draw their attention, but always be ready to turn safely out of their way if needed. Do not focus on the LCD display for extended periods of time while riding.
- We do not recommend that you ride your tricycle at night or in an environment with poor visibility. If you have an emergency that makes it necessary to do so, keep your light on and limit your speed appropriately.
- **DO NOT** get the battery, its charger, or its power cord wet or operate them with wet hands.
- **NEVER** use the pedal assist system (PAS) in any situation, road condition, or terrain where doing so might impair your control of your tricycle.
- After each use and before any cleaning, servicing, or storage, **DO NOT** leave the key at "ON" and it is strongly recommended to disconnect the power plug from the battery's socket and remove the battery from this tricycle to avoid any unintentional touch on the throttle, causing the tricycle to run and bringing about accidents.

Specifications

Motor Power		250W
Battery	Type	36V Lithium
	Waterproof Rating	IP64
Wheel Diameter		24 in. (60.9 cm)
Max. Speed		15.5 mph (25 km/h)

Package List





Item	Name	Qty.
1	Rear Frame	1
2	Handlebars	1
3	Battery	1
4	Main Frame	1
5	Rear Wheels	2
6	Motorized Front Wheel	1
7	Rear Fender Supports	2
8	Rear Fenders	2
9	Front Fender	1
10	Seat with Post	1
11	Zip Ties	2
12	Spring	1
13	Front Wheel Cap	1
14	Pedals	2

Item	Name	Qty.
15	Power Cord	1
16	Charger	1
17	Connecting Pieces	16
18	Chain	1
19	Front Light	1
20	Chain Guard	1
21	Rear Fender Stays	2
22	Front Fender Stay	1
23	Rear Wheel Caps	2
24	Spoke Reflectors	3
25	Rear Reflectors	2
26	Keys	2
27	Connecting Slats	2
28	Basket Sides	5
29	Brake Cable Caps	2

For your convenience, all bolts, nuts, and washers are pre-installed where they will be needed. During assembly, simply remove the fasteners as needed and keep them nearby. Reinstall them to connect each part as you go and tighten them securely for a safe and satisfactory experience.

For best results, prepare and use the following tools as needed:

- 10mm Wrench
- 13mm Wrench
- 15mm Wrench
- 17mm Wrench
- 18mm Wrench
- 22mm Wrench
- 5mm Hex Wrench
- 6mm Hex Wrench
- Phillips Screwdriver
- Pliers

Assembly

To see these instructions in video form, go to our YouTube channel **Viribus Bikes** and search for “Fixed Gear Electric Tricycle”.

1. Connecting the Rear and Main Frames



1. Place the rear frame (1) and main frame (4) vertically on a firm level surface.
2. Loosen the 6 sets of M10 nuts and bolts on both sides of the frames, leaving slots between the washers and the frames.
3. Align the slots of the frames with each other, sliding the rear frame onto the main frame as shown. For best results, start with either side and repeat for the other side.
4. Partially tighten these nuts and bolts with your 17mm wrench. (Fully tighten them later after chain installation.)

2. Installing the Handlebars



1. Remove the protective cover underneath the stem of the handlebars (2).
2. Loosen the M8 bolt on the top of the stem with your 6mm hex wrench.
3. Slide the stem into the head tube of the main frame, retightening this bolt.
4. Lift the handlebars to an appropriate position, tightening the M8 bolt on the front with your 6mm hex wrench.
5. Connect the blue cables from the main frame to the throttle on the right handlebar.
6. Connect the red brake cables from the correct handlebars to the correct brakes. (Left to the front brake and right to the rear brake in the United States.)
7. Bind these cables using the zip ties (11).

3. Installing the Rear Wheels



Note: The two rear wheels (5) **ARE** different and should **NOT** be mixed up. The wheel with the O-shaped slot goes with the O-shaped hub on the rear axle while the wheel with the D-shaped slot goes with the D-shaped hub.

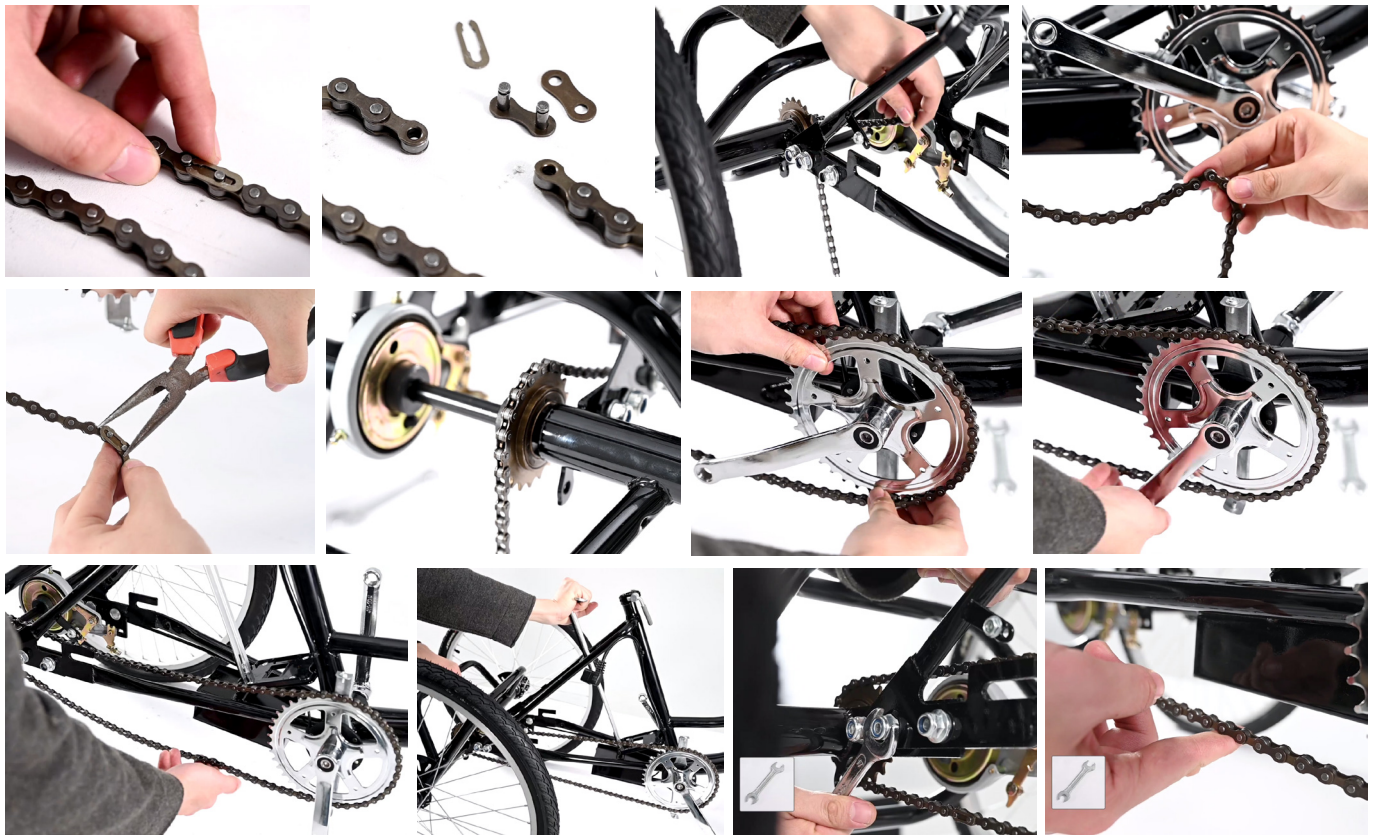
1. Remove the M14 nut and 2 washers from the O-shaped hub. Place them nearby.
2. Slide the spacer back into place on the O-shaped hub, if needed.
3. Insert the wheel with the O-shaped slot onto the O-shaped hub.
4. Replace the washers and nut, tightening the nut with your 22mm wrench.
5. Remove the M14 nut and 2 washers from the D-shaped hub. Place them nearby.
6. Insert the wheel with the D-shaped slot onto the D-shaped hub.
7. Replace the washers and nut, tightening the nut with your 22mm wrench.
8. Attach the rear wheel caps (23) to both wheel hubs, pressing hard until they are locked in place.

4. Installing the Front Wheel



1. Loosen the M12 nuts on both sides of the motorized front wheel (6).
2. Press and disconnect the V-shaped front brake on the main frame's front fork.
3. Fit the front wheel into the front fork, keeping the motor cable on the right.
4. Retighten the nuts with your 18mm wrench.
5. Connect the wiring between the motor and the main frame.
6. Cover the nut on the right with the attached cap.
7. Attach the front wheel cap (13) to the nut on the left, pressing it hard until it is locked in place.

5. Installing the Chain



1. Find the master link of the chain (18), pushing its U-shaped part away with your pliers.
2. Remove the other 2 parts to open the chain.
3. Pass the chain around the rear axle, pulling it forward.
4. Reconnect both ends of the chain by replacing all parts of the master link.
5. Fit the chain links around the rear and front sprockets, ensuring that the side surfaces are flat, as otherwise the behavior of the chain will be impacted.
6. Test that the chain moves freely by rotating the right crank arm.
7. Check that the chain remains a little loose. If needed, loosen the M10 bolts connecting the rear and main frames.
8. Push the main frame forward until the chain is taut, tightening these bolts completely with your 17mm wrench.

6. Installing the Chain Guard



1. Remove the 3 Phillips bolts from the guard supports near the front and rear sprockets. Place them nearby.
2. Place the chain guard (20) onto its supports and over the chain as shown.
3. Replace the bolts, tightening them with your Phillips screwdriver.
4. Rotate the chain to see if it rubs against the guard. If it does, readjust the guard so that the chain moves freely.

7. Installing the Seat



1. Loosen the locking bolt on the seat tube of the main frame by turning its handle counterclockwise.
2. Insert the seat post into the tube until your preferred height is reached.
3. Retighten the locking bolt by turning its handle clockwise.

8. Installing the Pedals



Note: The two pedals (14) **ARE** different and should **NOT** be mixed up. The right pedal is marked with an **R** and the left with an **L**.

1. Attach the pedals to the crank arms on the appropriate side, screwing them into place.
2. Tighten their locking nuts with your 15mm wrench.
3. Test that the chain turns smoothly while using the pedals. Adjust as needed.

9. Installing the Rear Reflectors



Note: The two rear reflectors (25) are the same. They can be used on either rear fender (8).

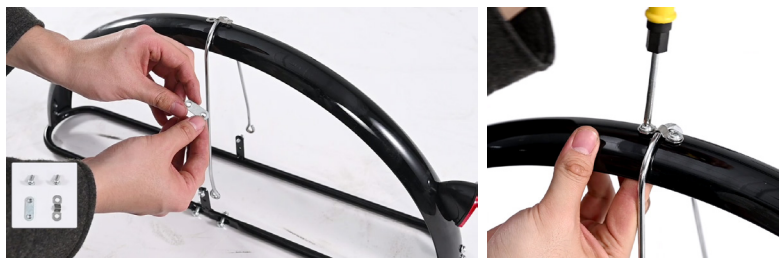
1. Remove the nut from one rear reflector's bolt. Place it nearby.
2. Attach the rear reflector to a rear fender.
3. Replace the nut, tightening it with your pliers.
4. Install the other rear reflector following the same steps.

10. Installing the Rear Fenders, Supports, and Stays



Note: The two sets of rear supports (7) and rear fender stays (21) are the same. They can be used on either rear fender. The two rear fenders are the same. They can be used above either rear wheel.

1. Remove the 4 bolts from the front and rear sides of one rear fender support. Place them nearby.
2. Fit one rear fender onto the support, aligning their holes with each other.
3. Replace the bolts, tightening them with your Phillips screwdriver.



4. Remove the 2 bolts and slats from the top of the rear fender. Place them nearby.
5. Mount one rear fender stay onto the rear fender support.
6. Replace the slats and bolts, partially tightening the bolts with your Phillips screwdriver.



7. Remove the 2 bolts from the left and right sides of the rear fender support. Place them nearby.
8. Turn the rear fender stay, aligning their holes with those of the support. Adjust its shape using your pliers if needed.
9. Replace the bolts, tightening them with your Phillips screwdriver.
10. Lock the fender stay by tightening the bolts on the top completely with your Phillips screwdriver.



11. Remove the 4 sets of nuts, bolts, and washers from the bottom of the rear fender support. Place them nearby.
12. Fit the rear fender with its support over a rear wheel, aligning the holes on the rear frame with those on the support.
13. Replace the washers, bolts, and nuts.
14. Lift the rear fender to provide extra space.
15. Hold the nuts with your pliers, tightening the bolts with your Phillips screwdriver.
16. Install the other rear fender, support, and stay following the same steps.

11. Installing the Front Brake, Fender, Light, and Stay



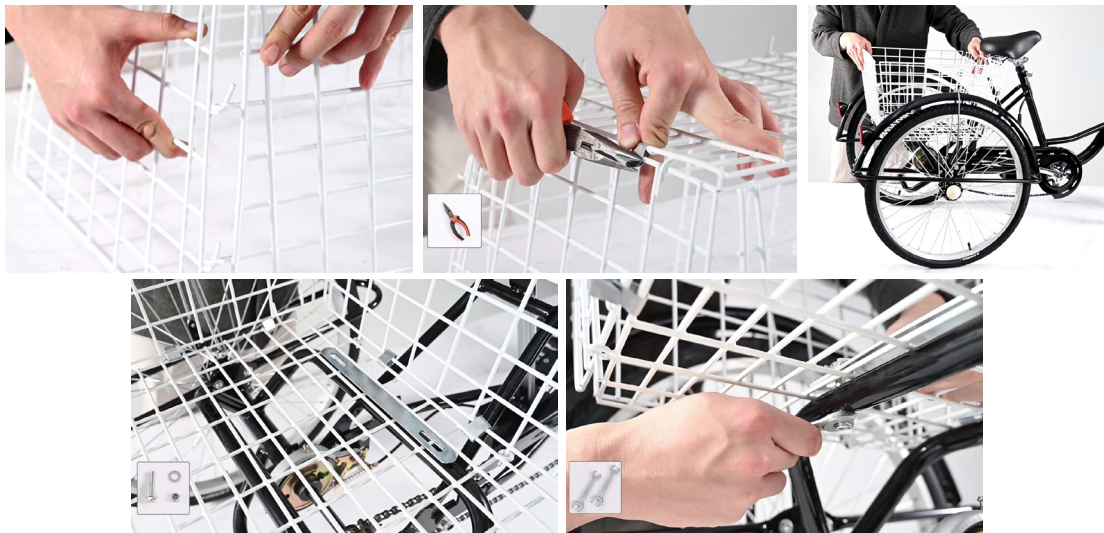
1. Remove the 2 bolts and slats from the top of the front fender (9). Place them nearby.
2. Mount the front fender stay (22) onto the front fender.
3. Replace the slats and bolts, tightening the bolts with your Phillips screwdriver.
4. Position the brake pads over the front wheel's rim. (Do not allow them to touch the tire.)
5. Tighten the bolt with your 5mm hex wrench.
6. Fit the front brake cable into the slot of the other side of the V-shaped front brake, pulling it taut.
7. Attach one brake cable cap (29), squeezing it with your pliers.
8. Remove the nut, washer, and long bolt from the top of the front fork. Place them nearby.
9. Remove the small bolts from the bottom of the front fork. Place them nearby.
10. Place the connecting plate of the front light (19) onto the top of the front fork, replacing the long bolt.
11. Fit the front fender over the front wheel, passing the long bolt through its top hole.
12. Replace the washer and nut, tightening the nut by hand.
13. Turn the front fender stay, aligning its holes with those at the bottom of the front fork. Adjust its shape using your pliers if needed.
14. Replace the small bolts, tightening them with your Phillips screwdriver.
15. Hold the long bolt's nut with your pliers, tightening the bolt completely with your Phillips screwdriver.
16. Connect the yellow banded cable to the light.

12. Installing the Rear Brake



1. Place the spring (12) between the rear brake cable support and the locking bolt on the rear frame as shown.
2. Feed the rear brake cable through the support, spring, and bolt.
3. Press the bolt, tightening its nut with your 10mm wrench.
4. Tighten the cable's locking nut by hand.
5. Test the rear brake by pressing the rear brake handle.
6. Attach the other brake cable cap, squeezing it with your pliers.

13. Installing the Basket



Note: For best results, use work gloves to prevent injury.

1. Connect the 5 sides of the basket (28) as shown.
2. Secure each side with the 16 metal connecting pieces (17).
3. Remove the 4 sets of nuts, washers, and bolts from the rear frame.
4. Fit the basket onto the rear frame, placing the connecting slats (27) into the basket where their bolt holes are aligned with those on the rear frame.
5. Replace these fasteners, tightening the M8 nuts with your 13mm wrench.

14. Installing the Spoke Reflectors



1. Fit the slots of one spoke reflector (24) onto 2 spokes.
2. Press the reflector until it is locked in place.
3. Install the other spoke reflectors following the same steps.

15. Installing the Battery



1. Press the lever underneath the seat, moving the seat out of the way.
2. Slide the battery (3) into place behind the seat tube.
3. Replace the seat.
4. Insert the attached power plug into the socket.

Operation

Riding with Throttle Control

1. Insert the key (26) into its socket on the battery and turn it clockwise to “ON”. The LCD display on the right handlebar should turn on, displaying the remaining power of the battery.
2. Turn the throttle handle on the right handlebar to activate the motorized wheel.
3. To speed up, turn the throttle handle further. To slow down, ease the throttle handle back and/or press your brake levers. Pressing either brake lever completely will cut off all power from your battery to the motorized wheel, temporarily leaving it in neutral. Release the brake lever to restore power.
4. To stop your tricycle, release the throttle handle completely and apply your brakes as needed. Press the emergency stop button below the LCD display if necessary, which will cut off the power immediately even if the throttle handle is not released.
5. To turn off the motorized wheel, release the throttle and brake levers while the tricycle is completely stopped. Turn the key counterclockwise to “OFF” and the LCD display will turn off.

Riding with Pedal Assist Control

1. Insert the key (26) into its socket on the battery and turn it clockwise to “ON”. The LCD display on the right handlebar should turn on, displaying the remaining power of the battery.
2. Make sure the throttle handle is fully released.
3. Turn the pedals on your tricycle once. The pedal assist system (PAS) will activate and turn the wheels using the motor’s power immediately, allowing the tricycle to reach its highest speed.
4. Turn off the pedal assist system by turning the throttle handle or pressing the brake lever. The tricycle will default to throttle control or neutral. Press the emergency stop button below the LCD display if necessary, which will cut off the power immediately, defaulting the tricycle to neutral.

Ride with Manual Control

To ride your tricycle normally, leave the key (26) at “OFF” on the battery or remove the battery.

Maintenance

Charging

To see the battery's remaining power, refer to the LCD display on the right handlebar or press the power button and refer to the LED display on the top of the battery.



1. Unlock the battery by turning the key counterclockwise to "Unlock".
2. Remove the battery from the tricycle.
3. Connect the charger (16) to a stable compatible power source.
4. Connect the battery to the charger using the provided power cord (15). The charger's power indicator light should turn red and charging should begin.
5. When the light turns green, the battery has been fully charged. Disconnect the charger from your power source first and then remove the battery from the charger.

Miscellaneous

- Disconnect the power after each use and prior to any cleaning or other maintenance.
- Check the parts of the tricycle for any looseness, wear, or damage after use. Tighten, repair, or replace any problematic parts before further use.
- The exterior of the tricycle can be cleaned with a soft damp cloth. Do not use abrasive or caustic chemicals.
- Lubricate the chain and any moving part using a standard bike lubricant as needed.
- If the tricycle will not be used for an extended period of time, store in a cool dry place inaccessible to children.

Contact Us

Thank you for choosing our products! If you have any questions or comments, contact us at help@cs-supportpro.com and we'll resolve your issue ASAP!

For a .pdf copy of the latest version of these instructions, use the appropriate app on your smartphone to scan the QR code to the right.



A T B - E 0 2 4 - B K
A T B - E 0 2 4 - W T
A T B - E 0 2 6 - B K
A T B - E 0 2 6 - W T
Rev.16 May.2022