

User Manual

HDMI 2.0 Dual Monitor KVM Switches



Scan This Code to Get Support

User Manual

HDMI 2.0 Dual Monitor KVM Switches

I. Applicable Models:

922HUA-2: 2x2 Dual Monitor USB2.0 HDMI KVM Switch 2 Port 4K 60Hz

942HUA-2: 4x2 Dual Monitor USB2.0 HDMI KVM Switch 4 Port 4K 60Hz

922HUA-3: 2x2 Dual Monitor USB3.0 HDMI KVM Switch 2 Port 4K 60Hz

942HUA-3: 4x2 Dual Monitor USB3.0 HDMI KVM Switch 4 Port 4K 60Hz

These HDMI 2.0 dual monitor KVM switches allow user to control 2 or 4 dual graphic output computers, laptops and other applicable devices from one set of keyboard, mouse and 2 monitors which supports extended or duplicated display. Mouse and keyboard can be used alternately between two monitors to view and operate on two interface files respectively, and switch between computers conveniently using keyboard, mouse, push button, wired remote or auto scan, with high resolution support up to 4K 60Hz 4:4:4.

II. Product Features:

- Control 2 or 4 computers and other applicable devices with one set of keyboard mouse and 2 monitors.
- Support extended or duplicated display depending on computer setting;
- HDMI 2.0 supports resolution up to 3840*2160 4K 60Hz 4:4:4, HDCP and auto EDID
- Multi-platform support: Windows 10/7/2000/XP/Vista、Linux and Mac;
- Plug & play without any software needed;
- Support auto detection, if one computer is powered off, the switch will automatically switch to the next powered-on computer (default as inactive, please follow Hotkey operation for activation.);
- With memory function in case of power-down;
- Support independent mouse keyboard switch, even without USB signal input, you can switch the input device easily by keyboard or mouse;
- Auto Scan Mode for monitoring all computers /DVR/NVR;
- With USB pass-through technology for higher level of keyboard mouse compatibility;
- **USB 2.0 version** has 2 extra USB2.0 HUB and separate audio & microphone output;
- **USB 3.0 Version** has 2 Extra USB 3.0 Port supporting data transferring rate up to 5Gbps/s (10 times faster than USB 2.0), and 1 audio output (**no microphone output**);
- Include all cables except cable for monitors.

III. Important Reminder before Installation:

Dual monitor KVM Switches require dual video connections from each computer to the KVM switch. Most computers and laptops only have one HDMI output + VGA/DVI/DP/USB C output or other mixture, make sure you have right adapters ready before setup, you may need multiple adapters for multiple computers' connection.

If VGA to HDMI adapter needed, make sure it has built-in chips and separate power supply. Outsourced adapters or docking stations are beyond our control, make sure you get those that would work with our KVM switches. Resolution output depends on adapters if used any.

IV. How to Install (USB 2.0 Version):

1. Power off everything before installation
2. **PC 1** : Connect 2 Video outputs on PC 1 to HDMI IN 1A & 1B on the KVM, and connect USB 2.0 port and audio on PC 1 to USB 1 using USB + Audio cable.
3. **PC 2** : Connect 2 Video outputs on PC 2 to HDMI IN 2A & 2B on the KVM, and connect USB 2.0 port and audio on PC 2 to USB 2 using USB + Audio cable.
4. **PC 3 and PC 4** (4 Port Model): Repeat above to hook up PC 3 and PC 4.
5. Monitors: Connect Monitor A to HDMI A Out, Monitor B to HDMI B Out.
6. **Wired or Wireless Keyboard & Mouse**: Connect keyboard and mouse to USB ports with Keyboard and mouse icon (hotkeys supported); or connect them to USB 2.0 HUB ports (hotkeys not supported).
7. **Audio Devices**: Connect speaker or microphone output on KVM (optional), make sure the audio jacks are also plugged into your computers if needed.
8. **Power Adapter**: connect the power adapter to DC input.
9. Power on the KVM and then computers.

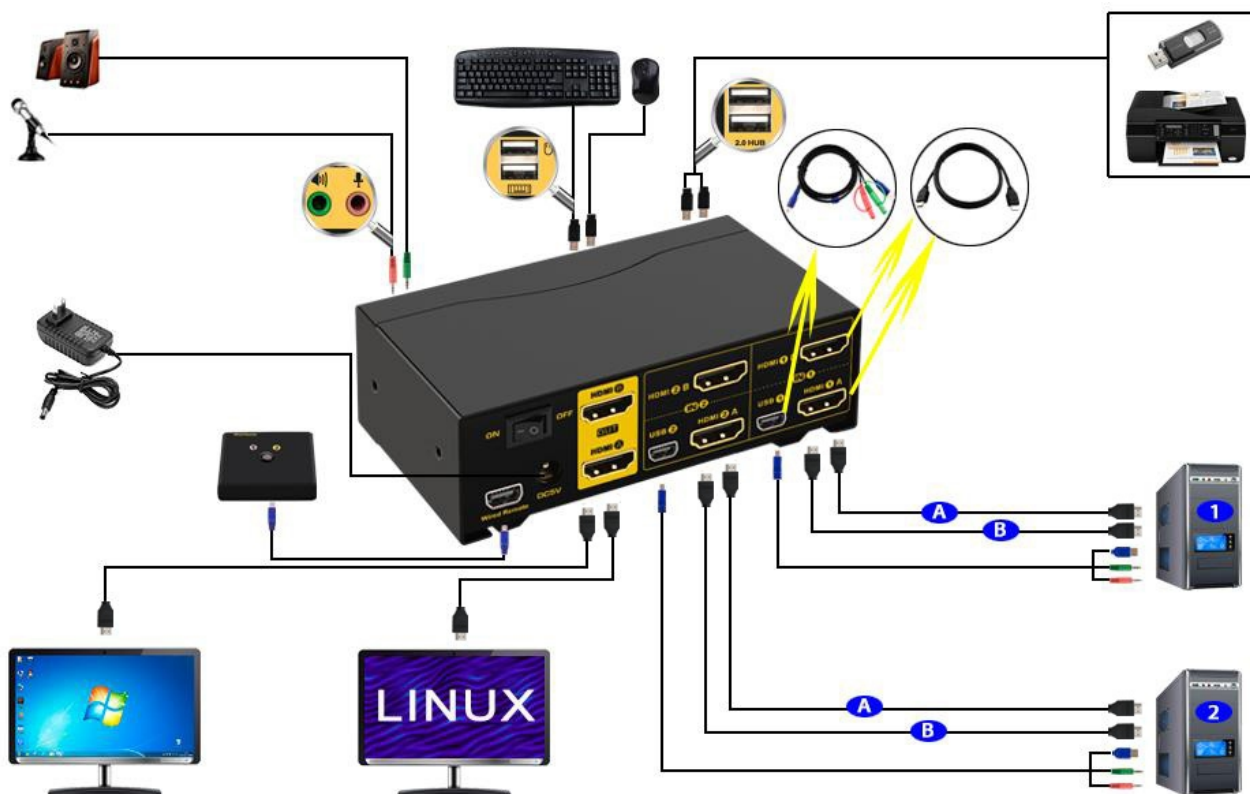
V. How to Install (USB 3.0 Version):

1. Power off everything before installation
2. **PC 1** : Connect 2 Video outputs on PC1 to HDMI A & B on PC1 IN section of the KVM, and connect USB 3.0 port to USB B-female port using USB A-male to B-male cable included (This is important to get the USB ports on the KVM switch work)
3. **PC 2** : Connect 2 Video outputs on PC1 to HDMI A & B on PC1 IN section of the KVM, and connect USB 3.0 port to USB B-female port using USB A-male to B-male cable included (This is important to get the USB ports on the KVM switch work)
4. **PC 3 and PC 4** (4 Port Model): Repeat above to hook up PC 3 and PC 4
5. Monitors: Connect Monitor A to HDMI A Out, Monitor B to HDMI B Out
6. **Wired or Wireless Keyboard & Mouse**: Connect keyboard and mouse to USB ports with Keyboard and mouse icon (hotkeys supported); or connect them to USB 3.0 HUB ports (hotkeys not supported)
7. **Audio Devices**: Connect speaker or headset to audio output on KVM (optional)
8. **Power Adapter**: connect the power adapter to DC input.
9. Power on the KVM and then computers.

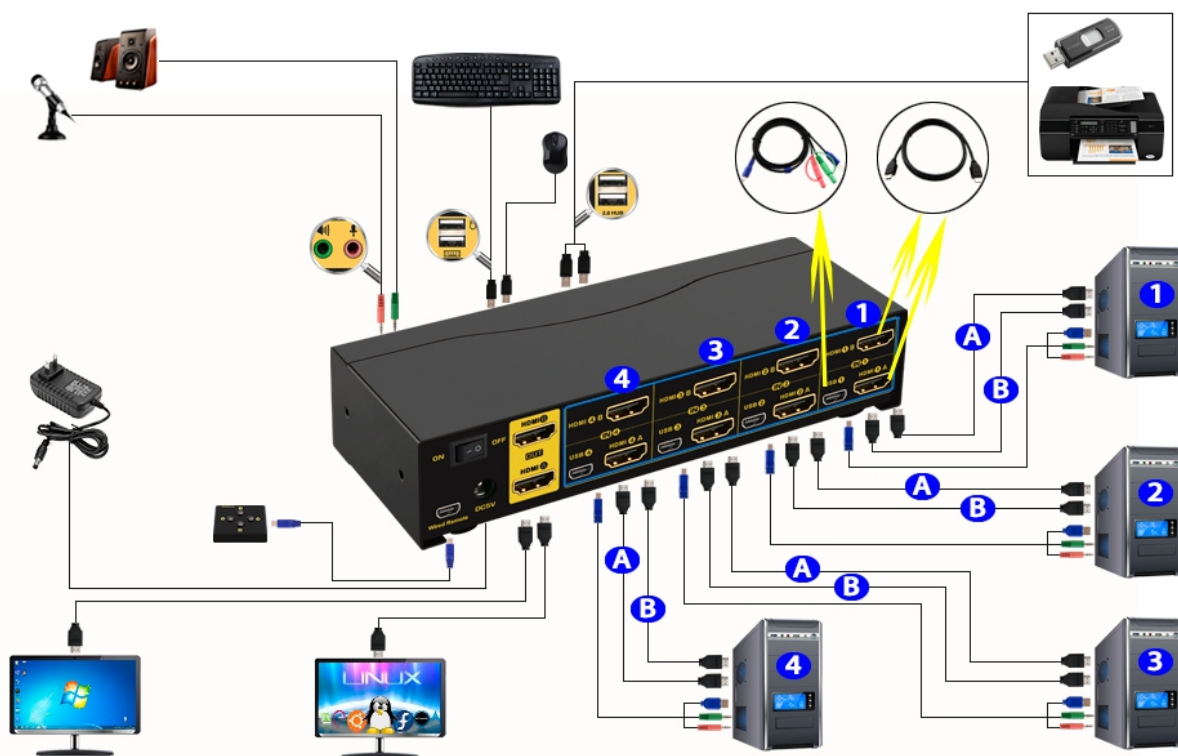
Special Notes:

1. USB connection is to ensure keyboard and mouse work properly.
2. What if my computer or laptop only has 1 HDMI output? You will need reliable adapters or docking station for non-HDMI outputs, VGA adapters need to be powered. Please be aware of this before ordering !
3. The monitors take around 20 seconds to display at first set-up, later on it only takes around 2-3 seconds to display upon switching.

VI. Connection Diagram:



Model Number: 922HUA-2



Model Number: 942HUA-2



Model Number: 922HUA-3



Model Number: 942HUA-3

VII. Dual graphics card display settings

Take win7 as an example: hold down the keyboard windows key→P, as



shown in the figure , a dialog will pop up as below.



Select Duplicate or Extend, then the two monitors can be displayed at the same time per selected display mode.

VIII. Switch Modes:

1. **Push Button Switch:** Switch using white buttons on front panel.
2. **Mouse Click Switch :**
 - 1) **2 port dual KVM switch:** Double click the mouse middle roller (within 1 second) for back and forth switching
 - 2) **4 port dual KVM switch:**
 - a. Double click the middle roller of mouse, and then press the right mouse button to switch to the next port.
 - b. Double click the middle roller of mouse, then press the left mouse button to switch to the previous port.
3. **Keyboard Hot-key Switch :** Double click the right **【Ctrl】** → Port Number→ **【Enter】**
4. **Wire Remote Switch:** Switch to any port by remote button after you plug it to the KVM.
5. **Auto Scan Switch:** Default as inactive, Please refer to page 5 for hotkey operation guidance.

NOTE:

Front panel button switch and wired remote switch cannot be used simultaneously for 4 port model 942HUA-2..

When you plug the wired remote switch to the KVM, button switch on front KVM panel will be disabled.

IX. Turn on/off mouse and Keyboard hotkey

1. **Turn off mouse switch:** When hotkey switch is on (default as on and 'Hotkey on' lights in green), double click right **【Ctrl】**→**【M】**→**【Enter】**, after 'beep' sound, mouse switch function is turned off, the USB mouse port will be changed to a Standard USB 2.0 HUB. The "Hotkey ON" light still shows green.
2. **Turn off Keyboard Hotkey:** When hotkey switch is on, click right **【Ctrl】** → **【K】** → **【Enter】** , after 'beep' sound, the keyboard hotkey switch is turned off, the USB keyboard port of KVM will be changed to a standard USB 2.0 HUB. The "Hotkey ON" light is off.
3. **Turn off all hotkeys:** Press the hotkey on/off button quickly (do not hold on to it) to turn off the hotkey for both mouse and keyboard, the hotkey on LED will be off, and both USB keyboard and mouse port will turn into standard USB 2.0 ports. User can connect the wired remoter to switch between computers instead of hotkey.
4. **Restore Hotkey Function:** When mouse switch and hotkey switch were turn off, you could press 'Hot key on/off' button to restore Hotkey function ('Hotkey On' light will be turned on in green).

X. Hotkey Setting:

Default hot-key is the right 【Ctrl】 (the Ctrl key on right side of keyboard). If use the right 【Ctrl】 conflicts with other hot-key, the hot-key can be set to 【Num lock】 or 【Scroll Lock】 .

For example: Double click the right 【Ctrl】 → 【Num lock】 → 【Enter】 , The hot-key changes to 【Num lock】 ; double click the right 【Ctrl】 → 【Scroll Lock】 → 【Enter】 , The hot-key changes to 【Scroll Lock】 key.If the hot-key set as 【Scroll Lock】, and you want to set the hot-key as the left 【Ctrl】 key, then double click the 【Scroll Lock】 → the left 【Ctrl】 → 【Enter】 , then the hot-key changes to the left 【Ctrl】 .

Hotkey Change Setting:

Double click the right 【Ctrl】 → 【Num lock】 → 【Enter】	Hotkey change to 【Num lock】
Double click the right 【Ctrl】 → left 【Ctrl】 → 【Enter】	Hotkey change to the left 【Ctrl】
Double click the right 【Ctrl】 → 【Scroll Lock】 → 【Enter】	Hotkey change to 【Scroll Lock】
If the hotkey is changed to 【Scroll Lock】 , You want to change it to the left 【Ctrl】 , Then double click 【Scroll Lock】 → the left 【Ctrl】 → 【Enter】	

XI. Keyboard Hot-key Operation :

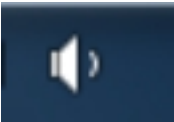

Double click the right 【Ctrl】 → N → 【Enter】	The KVM can switch to the device you choose.
Double click the right 【Ctrl】 → 【S】 → 【Enter】	Turn on/off the auto-scan function, or you can press the scan button on front panel
Double click the right【Ctrl】→【S】→ N →【Enter】	Set the scan interval, Can set to 8-999 seconds (The system defaults to 8 seconds)
Double click the right 【Ctrl】 → 【B】 → 【Enter】	Turn on/off the beeping sound
Double click the right 【Ctrl】 → 【T】 → 【Enter】	Turn on/off the detection function (default is off)
Double click the right 【Ctrl】 → 【R】 → 【Enter】	Reset the KVM System to solve the keyboard and mouse freeze.
Double click the right 【Ctrl】 → 【H】 → 【Enter】	HDMI audio output(default), only for 922HUA-2/942HUA-2
Double click the right 【Ctrl】 → 【P】 → 【Enter】	Select 3.5 Loudspeaker Output, only for 922HUA-2/942HUA-2
Double click the right 【Ctrl】 → 【TAB】 → 【Enter】	Restore the hotkey to the default --- right 【Ctrl】
Double click the right 【Ctrl】 → 【ESC】 → 【ESC】 → 【ESC】 → 【Enter】	Reset factory setting for KVM switch to solve the problem of keyboard and mouse

Notes:

1. The “N” stands for the computer’s Port ID number (1, 2, 3, 4) or auto scan interval time of 8 to 999 seconds.
2. When the auto scan function is activated, you can press any key on the KVM front panel, the auto scan function turns off automatically.
3. Keyboard and mouse must be plug in the positions marked with keyboard and mouse icon, so keyboard hot keys and mouse click switching will be effective.
4. For wireless mouse and keyboard; Please plug the Bluetooth receiver into the USB keyboard port for better performance.
5. For some high speed, optical, multi-functional, gaming or mechanical keyboard or mouse, please plug into the USB 2.0 port on front panel, this connection does not support hotkey or mouse switching.

XII. Sound Settings

1. AMD HDMI Output Setting (Suits for both USB 2.0 and USB 3.0 Models)

Right click  on the desktop taskbar to popup task box , click 'Playback devices', then a dialog jumps out as Figure A. Then right click the 'AMD HDMI Output' shown as Figure B. And then select the 'Set as Default Device'. It displayed tick status as Figure C, which indicates successful setup.

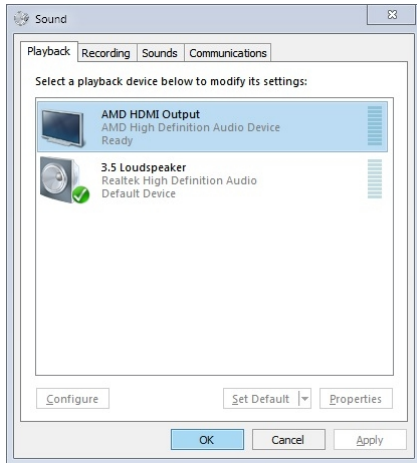


Figure A

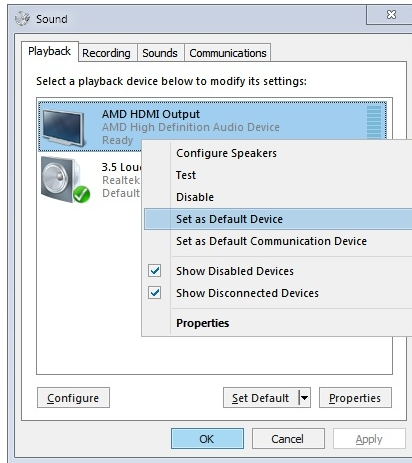


Figure B

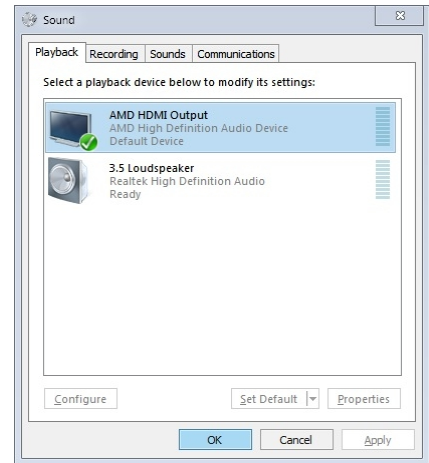




Figure C

2. 3.5 Interface Sound Settings (Suits for USB 2.0 version only)

Right click  on the desktop taskbar to popup task box , click '3.5 Loudspeaker', then a dialog jumps out as Figure A. Then right click the '3.5 Loudspeaker' as Figure B. And then select the 'Set as Default Device'.



It displayed tick status , which indicates successful setup as the Figure C.

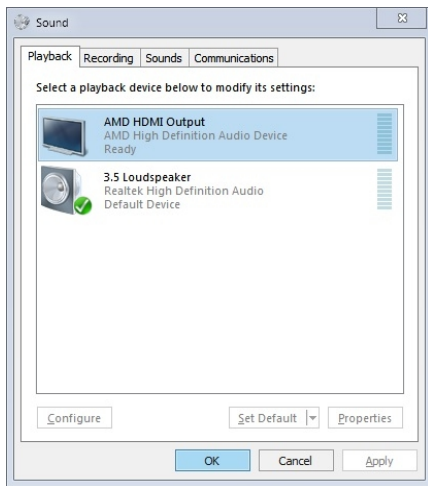


Figure A

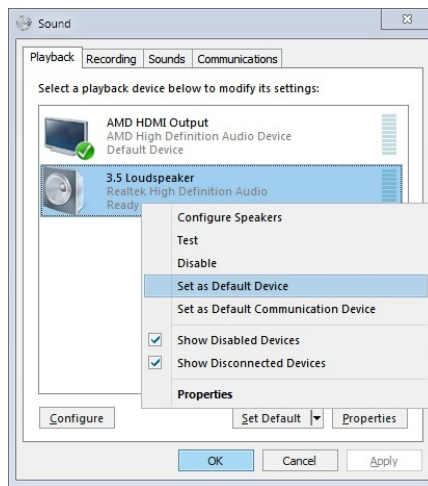


Figure B

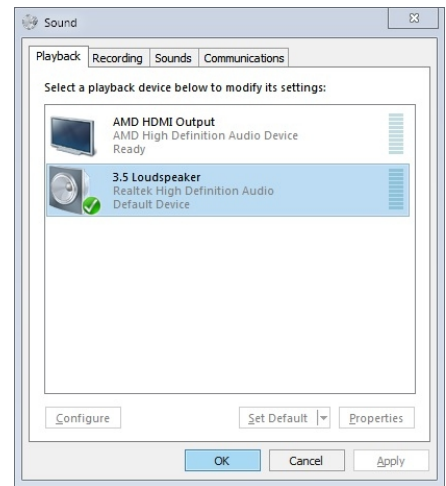


Figure C

XIII. Box Contents:

1. Dual Monitor KVM Switch x 1
2. HDMI 2.0 cables (2 for 2 port model, 4 for 4 port model)
3. USB 2.0 Version: USB+audio combo cables (2 for 2 port model, 4 for 4 port model)
USB 3.0 Version: USB A-male to B-male cables (2 for 2 port model, 4 for 4 port model)
4. Remoter with wire x 1
5. USB to DC power cord x 1 (DC 5V 2A 5.5 x 2.5mm)
6. user manual in English

If in case any components is missing as received, please kindly contact seller for quick replacement!

XIV. FAQ & Trouble Shooting

Q1. Why I cannot get extended displays or only one monitor works?

1. Make sure to power off everything before installation, then power on the KVM, then monitors, then computers after installation completed.
2. Make sure your computer support dual display, verify this by connecting 2 monitors to your computers directly.
3. Make sure each computer has 2 video connection to IN A and IN B port on KVM respectively.
4. Make sure you set your computer as extended display.
5. Make sure the adapter used (if any) are correct and work with our KVM switches.

Q2: Monitors do not display or images display improperly:

1. Check if the cables are connected well or swap the cables, see if it is cable problem.
2. If adapter used, make sure the adapter is correct and reliable, for VGA to HDMI adapter, it needs to be separately powered.
3. For a same video chain, avoid using adapters on both computer and monitor simultaneously. For eg. If an adapter is used on HDMI input A, do not use adapter on HDMI out A.
4. Check if the resolution settings are aligned to the supported resolution as described.
5. Power cycle the KVM (power off then back on immediately), then reboot your computers.

Q3. I have a Dual HDMI KVM model, my computer only has one HDMI output, how can I connect both cable A and cable B?

If your computer has HDMI + VGA / DVI / DP / USB C interfaces, use reliable adapter to connect or replace cable B for non-HDMI video outputs.

Q4: Keyboard and/or mouse do not work.

1. Make sure USB cable (included) must be connected from each computer to the correspondent USB port on the kvm switch.
2. If keyboard and mouse do not respond correctly after certain period of use, try double click the right Ctrl, then triple click ESC ,then Enter to restore the hotkey to default status, or swap the cables see if it is one of the cable issue.

Q5. What is the difference between USB 2.0 / 3.0 HUB ports and the USB ports with keyboard or mouse icon?

USB ports with keyboard and mouse icon are dedicated for hotkeys, if you turn off the hotkey, then these 2 USB keyboard and mouse ports will become standard USB 2.0 / 3.0 HUB ports.

Q7. Does it work with USB-C (Type C) Laptops?

Yes, but depends on the USB-C dock quality which is beyond what we can control.

For newer MacBook Pro which has only USB C outputs, one USB C HUB with HDMI output and USB 2.0 port, and another USB C to HDMI adapter will be needed.

Q8. How can I turn off the beep sound?

You can double click the right Ctrl → B → Enter to turn the beep on/off. Make sure hotkey is on and the keyboard is on USB keyboard port when you do it.

Q9. How Can I deactivate the mouse switching function?

1. Simply plug your mouse into the USB2.0 Port on front panel
2. Or turn off mouse hotkey by double clicking the right Ctrl then M then Enter.

Q10: Audio does not work

Please refer to page 8 to 9 for sound settings.

Q10. I have other issues which are not listed above:

Please contact our Customer Care Team for support needed, we will reply within 24 hours during business days.



Scan This Code to Get Support