

# User Manual

## HDMI 2.0 KVM Switch

Thanks for buying our HDMI KVM switch. There are USB2.0+HDMI and USB3.0+HDMI KVM switches for your selection. It allows you to access two or four computers /DVR/NVR from a single USB keyboard, USB mouse and monitor console. They are widely used in security exchange market, multimedia conference room, booking hall ect...

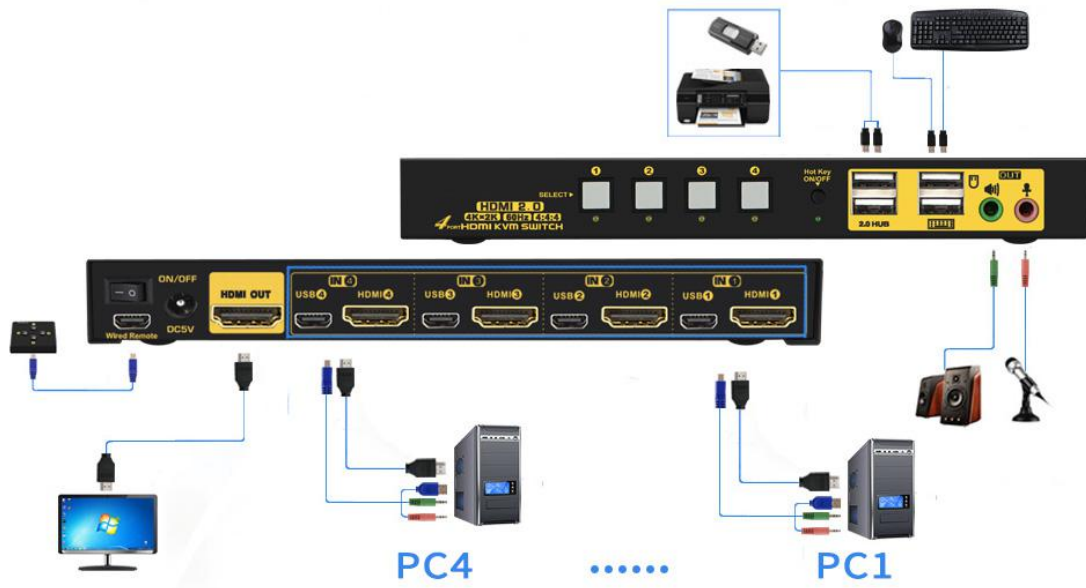
### ◆ USB2.0+HDMI2.0 Product Features:

- One USB console controls 2/4 HDMI interfaced computers /DVR/NVR
- Switch Mode: a. wire remote push button switch b. Keyboard Hot-Key switch c. click mouse switch d. button switch on front panel
- HDMI 2.0 supports resolution up to 4096x2160@ 60Hz 4:4:4
- Multi-platform support: Windows 10/7/2000/XP/Vista、Linux and Mac;
- Support Hot plug & play
- Support HDCP, Support auto EDID
- Support auto detection, if one computer is powered off, the switch will automatically switch to the next powered-on computer (The default is in closed state, if you want to open it, please read the below setting operation instructions ).
- With memory function in case of power-down
- Support independent mouse keyboard switch, even without USB signal input, you can switch the input device easily by keyboard or mouse.
- Auto Scan Mode for monitoring all computers /DVR/NVR
- With USB2.0 Hub
- With audio&microphone

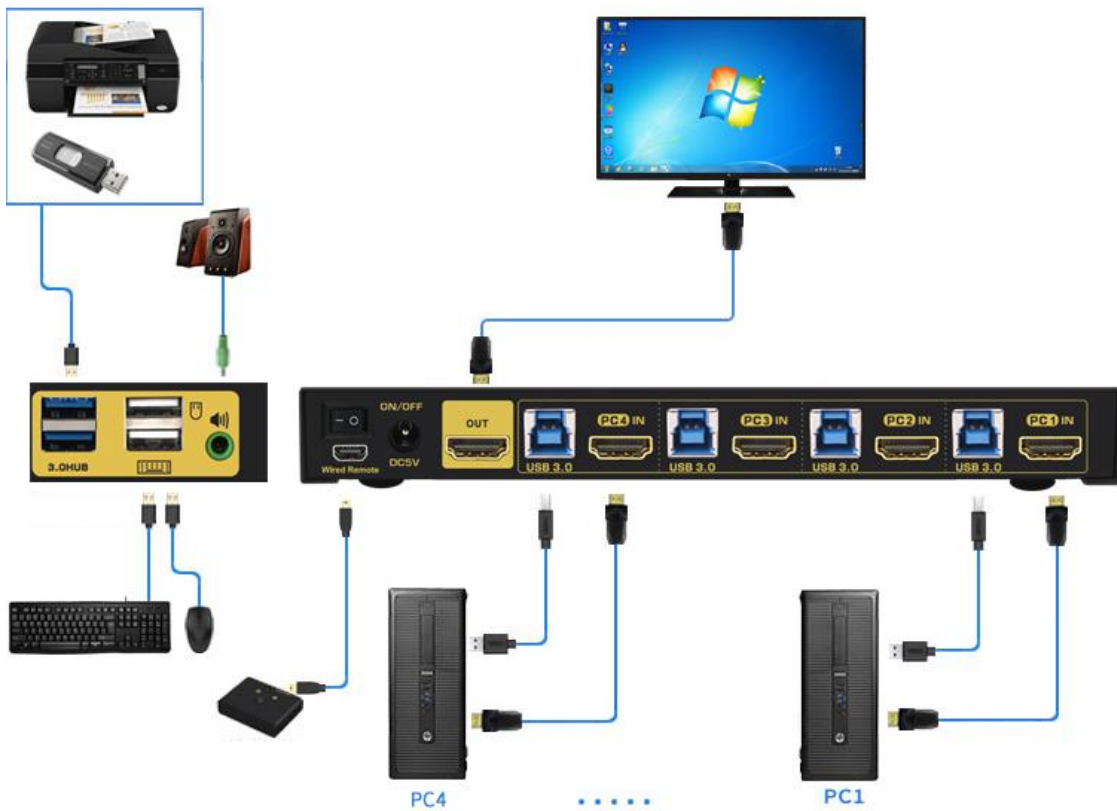
### ◆ USB3.0+HDMI2.0 Product Features:

- One USB console controls 2/4 HDMI interfaced computers /DVR/NVR
- Switch Mode: a. wire remote push button switch b. Keyboard Hot-Key switch c. click mouse switch d. button switch on front panel
- HDMI 2.0 supports resolution up to 4096x2160@ 60Hz 4:4:4
- Multi-platform support: Windows 10/7/2000/XP/Vista、Linux and Mac;
- Support Hot plug & play
- Support HDCP, Support auto EDID
- Support auto detection, if one computer is powered off, the switch will automatically switch to the next powered-on computer (The default is in closed state, if you want to open it, please read the below setting operation instructions ).
- With memory function in case of power-down
- Support independent mouse keyboard switch, even without USB signal input, you can switch the input device easily by keyboard or mouse.
- Auto Scan Mode for monitoring all computers /DVR/NVR
- With 2 extra USB3.0 HUB, data transferring rate up to 5Gbps/s (10 times faster than USB 2.0)
- • With audio

◆ Connection Diagram:



**USB2.0 HDMI KVM Switch 4Port**

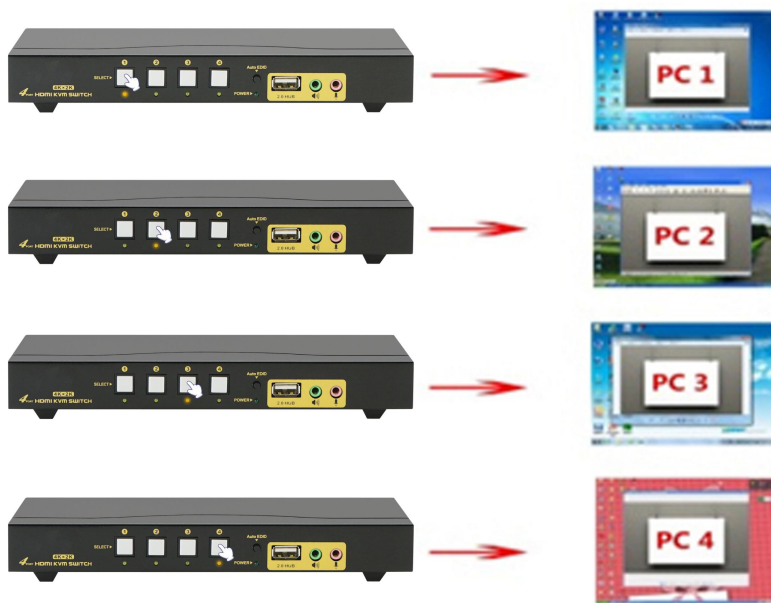


**USB3.0 HDMI KVM Switch 4Port**

1. Power off all devices;
2. Connect your computers to the Switch using USB+audio and HDMI cables included;
3. Plug your mouse and keyboard to correspondent USB mouse and keyboard port on back panel;
4. Connect your Monitors to the KVM
5. Plug in your speaker or microphone if needed;
6. Power on the KVM switch and then boot all devices.

## ◆ Switch Modes:

- **Button Switch:** Switch to any port by buttons on front panel.



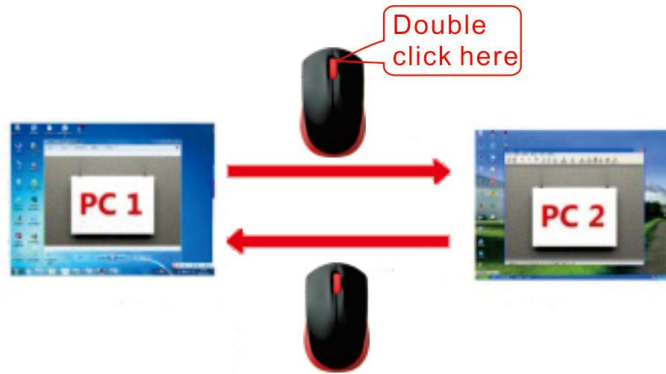
- **Wire Remote Push Button Switch:** Switch to any port by remote button after you plug it to the KVM.

**NOTES:** button switch and wire remote push button switch can't be using together. When you plug wire remote push button to the KVM, button switch will be disabled.



● **Click mouse Switch :**

2Port HDMI KVM switch: Double click the mouse middle roller for circular switching(within 1 second)



4Port HDMI KVM switch:

- a. Double click the middle roller of mouse, then press the right mouse button to switch to the next port.



- b. Double click the middle roller of mouse, then press the left mouse button to switch to the previous port.



● **Keyboard Hot-key Switch :** Fox example, double click the right **【 Ctrl 】** →1/2/3/4 **【 Enter 】**

## ◆ Turn on/off mouse switch and hotkey switch

(Default is turn on, 'Hotkey on' light is green)

1. When hotkey switch turn on('Hotkey on' light is green), double click right **【Ctrl】→【M】→【Enter】** , after hear 'beep' sound, mouse switch function was turn off, mouse port of KVM changed to USB HUB function.
2. When hotkey switch turn on, click right **【Ctrl】→【K】→【Enter】** , after hear 'beep' sound, hotkey on light was turn off, and hotkey switch was turn off, keyboard port of KVM changed to USB HUB function.
3. When mouse switch and hotkey switch were turn off, and you need use hotkey switch, you could press 'Hot key on/off' button, then hotkey switch restore('Hot key on' light is turn on).

Notes:

- ①. customers can turn on/off this function according his requirement;
- ②. If some gaming mouse and multifunction Keyboard don't work, he need turn off 'Hot key on/off' button, then the issue was solved.



## ◆ Hotkey Setting:

**Default hot-key is the right 【Ctrl】**. If use the right **【Ctrl】** conflict with other hot-key, The hot-key can be set to **【Num lock】** key, or **【Scroll Lock】** .

For example: Double click the right **【Ctrl】→【Num lock】→【Enter】** , The hot-key change to **【Num lock】** ; double click the right **【Ctrl】→【Scroll Lock】→【Enter】** , The hot-key change to **【Scroll Lock】** key. If the hot-key set as **【Scroll Lock】** , and

you want to set the hot-key as the left【Ctrl】 key, then double click the【Scroll Lock】 →the left 【Ctrl】 → 【Enter】 , then the hot-key change to the left 【Ctrl】 .

Double click the right 【Ctrl】 → 【Num lock】 → 【Enter】	Hotkey change to 【Num lock】
Double click the right 【Ctrl】 → left 【Ctrl】 → 【Enter】	Hotkey change to th left 【Ctrl】
Double click the right 【Ctrl】 → 【Scroll Lock】 → 【Enter】	Hotkey change to 【Scroll Lock】
If the hotkey is changed to 【Scroll Lock】, You want to change it to the left 【Ctrl】 , Then double click 【Scroll Lock】 →the left 【Ctrl】 → 【Enter】	

### ◆ Keyboard hot-key Operation:

Double click the right 【Ctrl】 → n → 【Enter】	The KVM can switch to the equipment you choose.
Double click the right 【Ctrl】 → 【S】 → 【Enter】	Turn on/off the Anto-scan function,You aslo can press the scan on front panel
Double click the right 【Ctrl】 → 【S】 → n → 【Enter】	Set the scan interval, Can set to 8-999 seconds (The system defaults to 8 seconds)
Double click the right 【Ctrl】 → 【B】 → 【Enter】	Turn on/off the beeping sound
Double click the right 【Ctrl】 → 【T】 → 【Enter】	Turn on/off the detection function (default is off)
Double click the right 【Ctrl】 → 【R】 → 【Enter】	Reset the KVM switch to solve the keyboard and mouse freeze
Double click the right 【Ctrl】 → 【H】 → 【Enter】	HDMI audio output(default), only for USB2.0 KVM switch
Double click the right 【Ctrl】 → 【P】 → 【Enter】	Select 3.5 Loudspeaker Output, only for USB2.0 KVM switch
Double click the right 【Ctrl】 → 【TAB】 → 【Enter】	Restore the hotkey to the default --- right 【Ctrl】
Double click the right 【Ctrl】 → 【ESC】 → 【ESC】 → 【Enter】	Reset factory setting for KVM switch to solve the problem of keyboard and mouse



### Notes:

1. The n stands for the computer's Port ID number (1, 2, 3, 4) or Number 8 to 999.
2. When the auto scan function is activated, you can press the any key on the panel, the auto scan function turns off automatically.
3. If the computer enters into sleep mode .You must to press the compter's power button to wake it up. we recommend the users do not set the computers enter sleep mode.
4. Orange LED lightning :The current opeating port



## ◆ Sound Card Settings (Optional) :

### 1. HDMI Sound Settings

Right click  on the desktop taskbar, popup task box , Click 'Playback devices', then jump out of the interface shown in Figure A. Then select the 'AMD HDMI Output', right click and show as Figure B. And then select the 'Set as Default Device'.

It displayed tick status  , which indicates successful setup. As the Figure C.

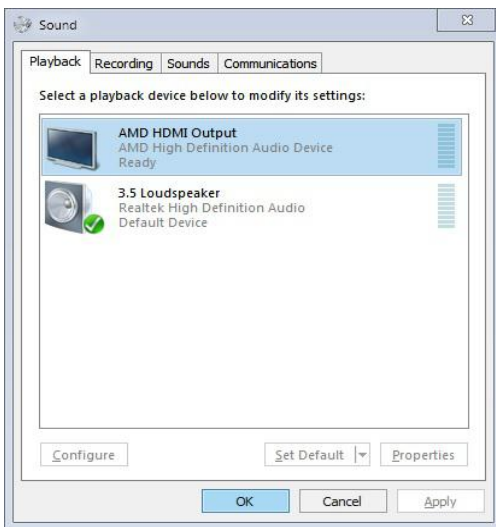


Figure A

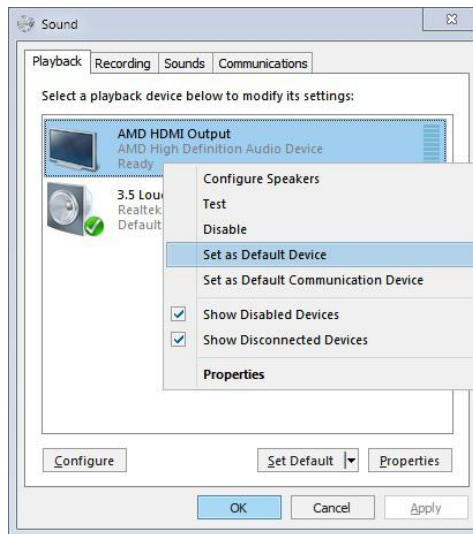


Figure B

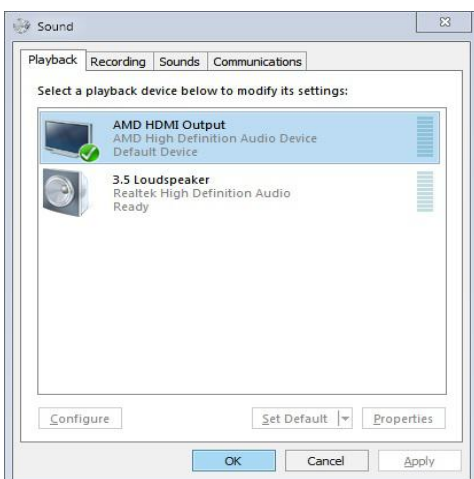





Figure C

## 2. 3.5 Interface Sound Settings

Right click  on the desktop taskbar, popup task box  , Click '3.5 Loudspeaker', then jump out of the interface shown in Figure A. Then select the '3.5 Loudspeaker', right click and show as Figure B. And then select the 'Set as Default Device'.

It displayed tick status  , which indicates successful setup. As the Figure C.

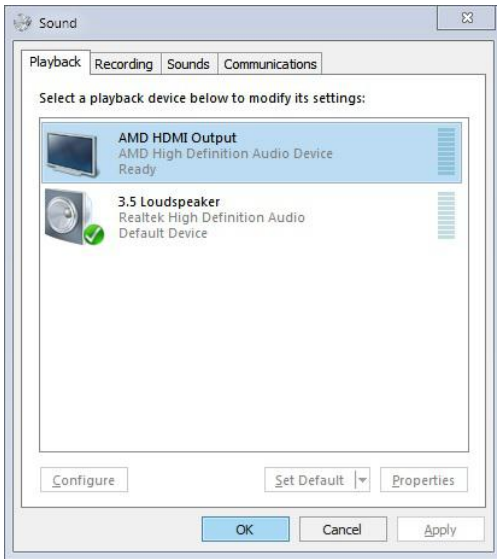


Figure A

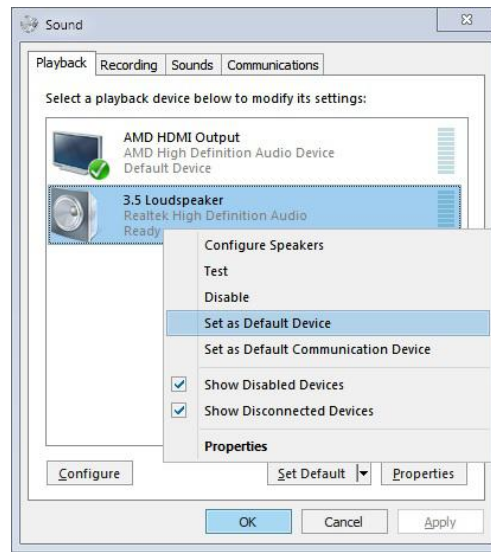


Figure B

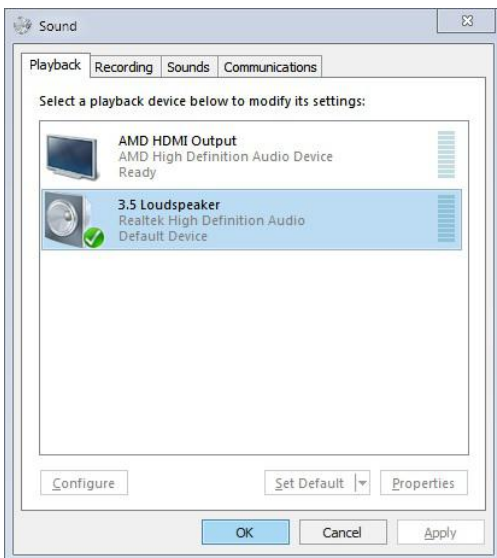


Figure C



## ◆ FAQ & Trouble Shooting

### Q1: **Keyboard or mouse does not work.**

1. Firstly, make sure that the cable is already connected to the computer side, there is no signal exception, and the power has been connected.
2. After the image switch normally, mouse and keyboard access to the KVM switcher, wait a few seconds for the computer to complete the device recognition.
3. Turn off the kvm and restart power to re-identify
4. Refer to Q7 for gaming or mechanical keyboard

### Q2: **Monitors does not display or images display improperly:**

Check if the cables are connected well or swap the cables, see if it is cable problem.

### Q3. **Mouse on my Mac only have curse moving but I can't click and drag the mouse:**

1. Try double click the right Ctrl → [F2] → Enter, Or
2. Install USB Overdrive on your Mac

### Q4. **Does it work with USB-C (Type C) Laptops?**

Yes, but depends on the USB-C dock quality which is beyond what we can control.

### Q5. **How can I turn off the beep sound?**

You can double click the right Ctrl → B → Enter to turn the beep on/off.

### Q6. **My gaming mouse or mechanical keyboard functions are not working. What shall I do?**

Some special mouse and keyboard may not work properly from the USB mouse and keyboard port at back panel, please try plug them into the USB2.0 HUB on the front panel.