

WiFi Easy Setup Guide



The user guide is for reference only. Screen shots displayed in this user's guide of the "i-Cam+" app may appear differently than those currently featured in your app as frequent updates and improvements.

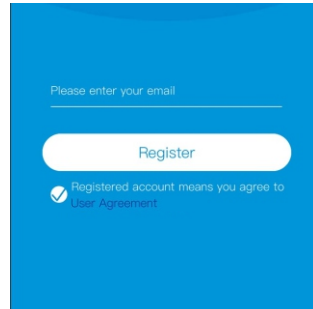
1. APP INSTALLATION

(1.) Scan the following QR codes or search for "i-Cam+" from the AppStore(for iOS devices) or Google Play Store (for Android smartphones) to download and install the app.

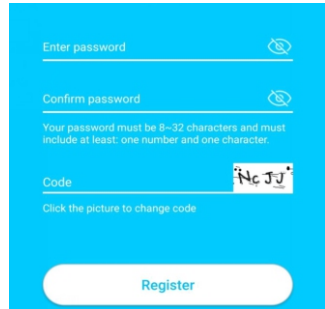


2. APP REGISTRATION

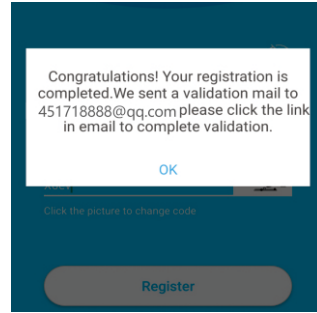
(1.) Open the app then input your E-mail address then press 'Register'. Check and select to agree the agreement then your E-mail box will get an verification mail.
(For better user's experience, please allow to open all permissions to avoid missing any notifications from the app.)



(2.) Set the login password and confirm the login password. Then press 'Register' to next step. (For your password safety, the password requires more than 8 characters plus combination of letters)

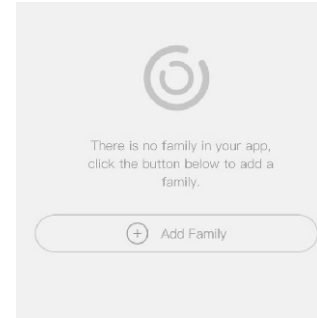


(3.) We send a verify mail to you, go to your mail box click the link to complete the verification.

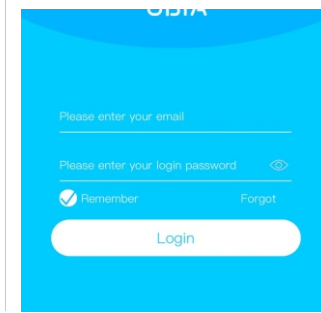


3. WI-FI CONNECTION

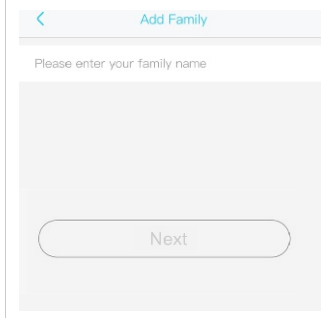
(1.) Press 'Add Family' then set the room or position as per reminders.



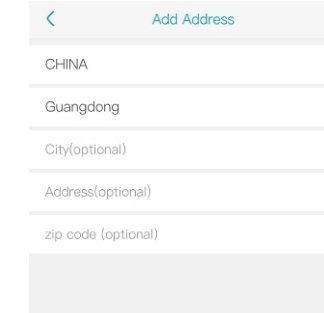
(2.) Enter your E-mail address, and password, click login. (APP will auto fill the account information)



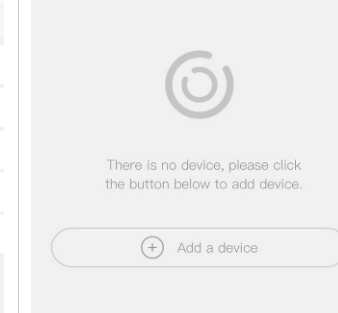
(2.) Enter your family name and then press 'Next'.



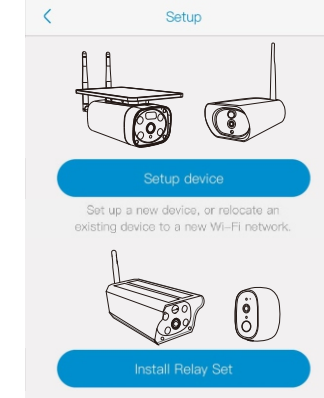
(3.) Input the necessary information just like Country, Province, then press 'Done'.



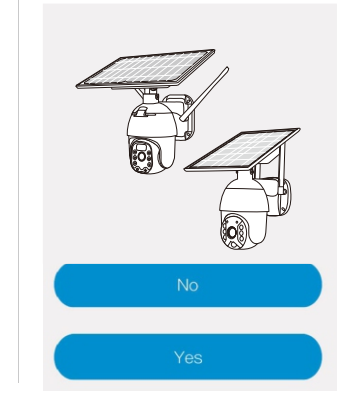
(4.) Press 'Add a device' to add a smart device



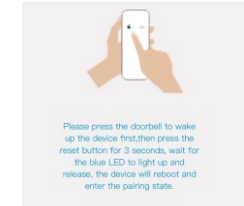
(5.) Connect the device with power supply, and make sure your mobile phone is connected to an available Wi-Fi. Then press 'Setup device'.



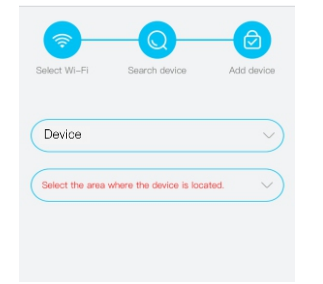
(6.) After the power on the device, wait for the device blue LED are blinking Which means your device in pairing mode



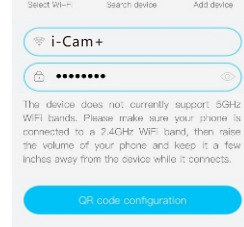
(7.) If the device blue are not blinking, please press the power/Call key to wake up the device first, then hold and press the RESET button until the blue indicator to light up and then release. The device will reboot and enter the pairing state.



(8.) Set the device name and select the device location before setup.



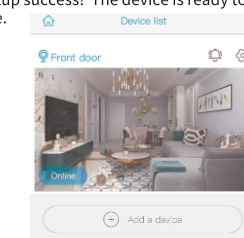
(9.) The app will input the Wi-Fi name automatically, please input the correct Wi-Fi Password. Then you can choose the 'QR code configuration' or 'Sound wave configuration'.



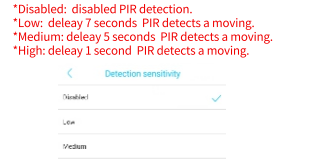
(10.) QR code configuration: Select the QR code configuration then the mobile phone display a QR code. Use the device to scan to the QR code 10cm away from the mobile phone.



(11.) The device will enter to the device list automatically. Setup success! The device is ready to use.

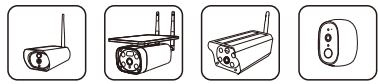


(12.) Notes about PIR detection
*User can change the PIR detection sensitivity in device settings, we recommend to set sensitivity at "Disabled" or "Low" to reduce false alert and save the battery power in noisy environments.

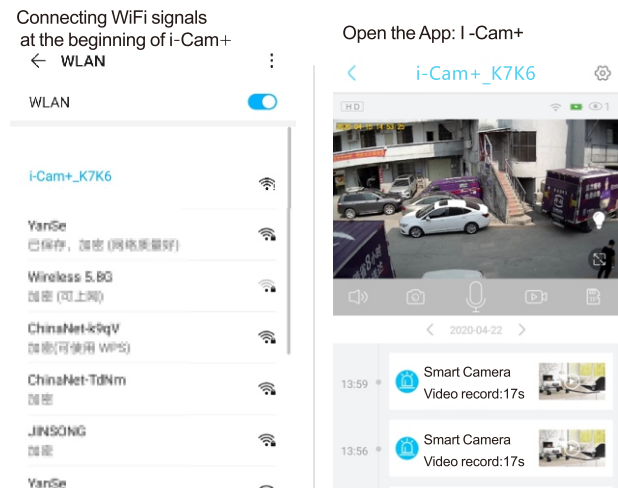


4. AP mode (connection without Internet)

This feature is only used for the following devices:

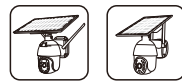


1. Download the APP: i-Cam+ (If you already downloaded it, please ignore this step)
2. AP Mode: Install the battery on the device, Make sure the indicator light in the front of the device is on. Use the looped needle (inside the accessory package) "Press and Hold" the Reset AP/WiFi button until you heard Second sound "Di"
"Press and Hold" the Reset AP/WiFi button until you heard Second sound "Di"
3. Turn on the mobile phone to search for a WiFi. The beginning of "i-Cam+_*****", the connection password is 12345678 (Note: keep connected to this WiFi)
4. Open the app: i-cam+, the connection is completed, and the screen can be viewed, and the video record can also be selected for playback

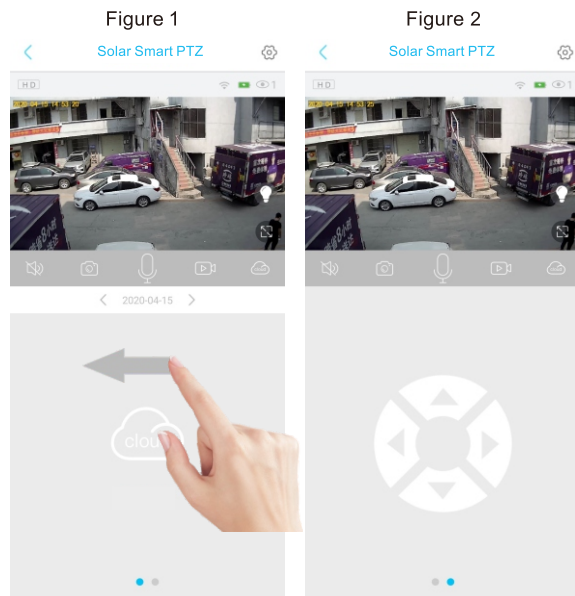


5. Control Rotation

This feature is only used for the following devices:

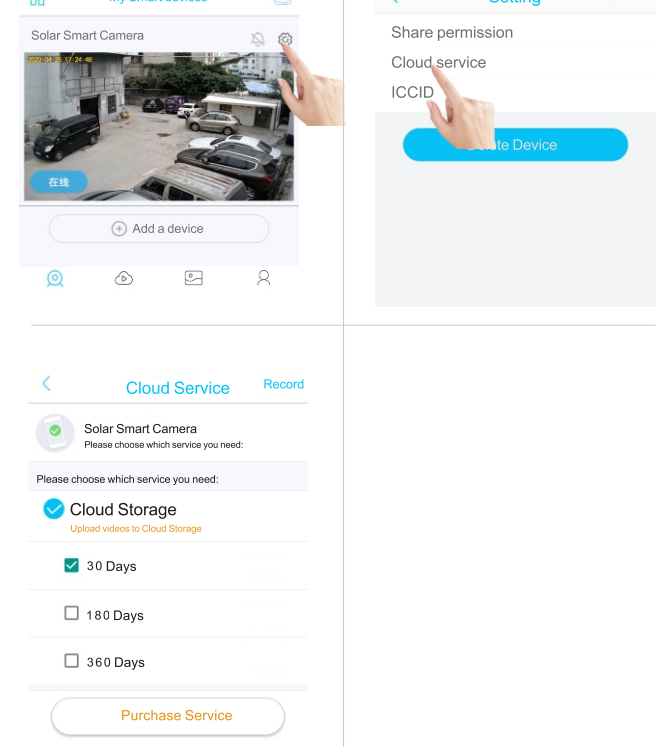


1. Open the app, and after entering the screen, as shown in Figure 1, press and hold the screen with your finger and slide to the left to switch to the control Button for camera rotation, as shown in Figure 2;
2. "Click" the direction key to control the rotation of the equipment. Due to the network, there is a slight delay in controlling the rotation camera, it's normal phenomenon.

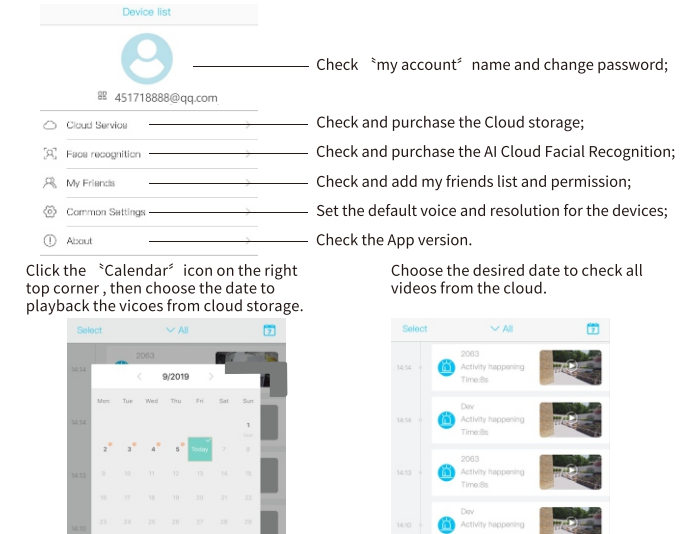
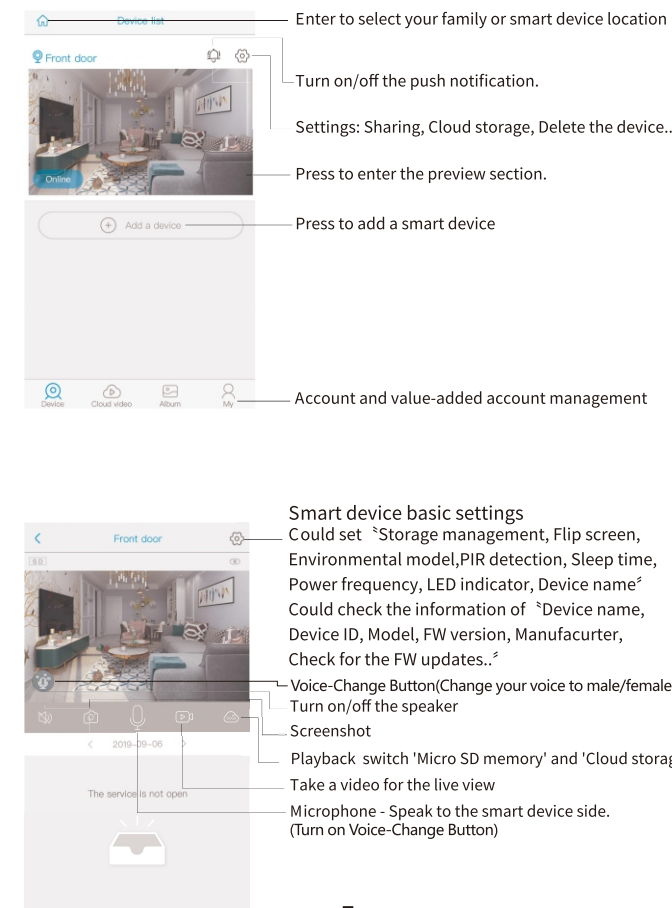


5. Cloud service & Face recognition

1. Open the App, Find the setting button in the top right corner in "My Smart device"
2. Click "cloud service" to enter the purchase interface and purchase services according to your own needs



6. USING THE APP



7. SPECIAL NOTES!

- (1.) The device is equipped with a rechargeable lithium battery. The battery life will be affected by the device wake-up time and the number of wake-ups. Therefore, the PIR sensor alarm detection function is used in an environment with a lot of people. It is recommended to turn off or set the device to low sensitivity to reduce device wake-up and call times extend battery life. When the battery is low, please charge the battery immediately.
- (2.) Keep the device in range of your router. Make sure the device is placed close to the Wi-Fi router. If there has to be thick or insulated objects between the device and the Wi-Fi router, which may lead to weak Wi-Fi signal, please make sure the Wi-Fi signal is in good level before you start using the device.
- (3.) It is a dedicated device with low power consumption design. Everytime the device is awakened and will work for few seconds. After that, the device will enter standby mode to save power. You can set the work time in the app settings.
- (4.) Because the mainland China does not receive Google's system push messages, you need to open the app's self-starting function in your phone to receive push messages.
- (5.) This device provides one month of free cloud storage. If you need to continue using value-added services after the trial period expires, you need to purchase them in the app.
- (6.) In the mobile phone settings, all permissions of app should be turned on, including location permission, notification permission, APP keeping background running and starting, etc