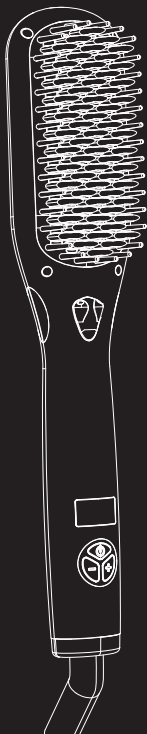




MiroPure


## HAIR STRAIGHTENER WF049

### USER MANUAL



I Love Me

 [support@miropureshop.com](mailto:support@miropureshop.com)

 1-855-666-5111

# CONTENT

SAFETY WARNINGS	02
POWER CORD SAFETY TIPS	04
APPERANCE AND INFORMATION	05
SPECIFICATIONS	06
OPERATION INSTRUCTIONS	07
AUTO-OFF SAFETY FUNCTION	09
TEMPERATURE SETTING	09
OPERATING TEMPERATURE ADVICE	09
ATTENTION	10
MAINTENANCE AND CLEANING	11
SERVICE AND GUARANTEE	11
ENVIRONMENTAL PROTECTION	11

## A Big Thank You

We're thrilled that you have chosen to purchase the Hair Straightener Brush. At MiroPure, we're committed to providing you with products that enhance your daily life. We also aim to give our customers excellent support. Should you have any questions or feedback about your new product, simply get in touch with our customer support team at **1-855-666-5111** , or by email at:

[support@miropureshop.com](mailto:support@miropureshop.com)

Enjoy your new product!



### NOTE

1. DO NOT place the device near water to prevent it getting wet.
2. Always unplug the unit after use.
3. Keep your skin away from hot surfaces.

## MIROPURE 2-IN-1 MCH HEATING IONIC HAIR STRAIGHTENER BRUSH USER MANUAL

Please read the instructions carefully before use and retain this manual in a safe place for future reference, and pass the manual onto any subsequent users.

### **About Ion Technology:**

The built-in ionic generator emits negative ions, negatively charged atoms and molecules that can interact with the molecular particles in your hair. They seal the hair cuticle and reduce frizziness, split ends and knotting, while increasing hair manageability, leaving hair silky and lustrous!

## SAFETY WARNINGS:

- Read **all** of the instructions carefully before use.
- This appliance can be used by juniors aged from 15 years and above and persons lack of experience and knowledge if they have been given supervision or instruction concerning the safety use of the appliance and understand the hazards involved Children shall not play with the appliance. Cleaning and user maintenance shall not be made by children unless they are older than 15 years and supervised.
- Keep away from water.
- Unplug the device immediately after use in order to reduce the risk of death in case of an electrica shock.
- Do not put the appliance in a place where it can slide into a sink or a bathtub and do not keep the device in such a place.
- Do not use the appliance while you are taking a shower.
- Do not immerse or drop it into water or other liquids. If an appliance falls into water, unplug immediately at the power outlet.
- Never leave the hair straightener unattended in order to reduce the risk of burn, electrical shock, fire or damage.
- Close observation is required when the appliance is in use to prevent usage by a child or other persons whom it is not intended for. Do not let children to play with this hair straightener appliance.
- If the cable or plug of the hair straightener is damaged or not working properly or dropped into water, stop using it.

If the cable or plug of this appliance is damaged, it must be changed by the manufacturer or similarly qualified persons in order to avoid a hazard.

- In order to avoid a hazard due to inadvertent resetting of the thermal cut-out, this appliance must not be supplied through an external switching device, such as a timer, or connected to a circuit that is regularly switched on and off by the utility.
- Use this appliance only for its intended use as described in this manual. Do not use attachments not recommended by the manufacturer.
- Keep the electricity cable away from hot surfaces.
- Never operate this appliance if it has a damaged cord or plug. If it is not working properly or if it has been dropped or damaged, or dropped into water, return the appliance to a service center for examination and repair.
- Do not place the heated unit directly on any surface while it is hot or plugged in.
- Do not use on people while they are sleeping.
- Do not use on pets.
- Do not use in open areas, or places where sprays are used or oxygen is given.
- The hair straightener brush's heater can get extremely hot during use. Do not touch the hot area with exposed skin.
- Only use this appliance on dry, natural hair without any flammable hair products.
- This appliance is not suitable for artificial hair.
- This appliance is not intended for commercial or salon use.

## **POWER CORD SAFETY TIPS:**

- Never pull or yank the cord of the appliance and do not use an extension cord with this appliance.
- Insert plug grasp it firmly and guide it into outlet.
- To disconnect the appliance, grasp plug and remove it from outlet.
- Before each use inspect the power cord for cuts and/or abrasion marks. if any are found this indicates that the appliance should be serviced and the line cord replaced.
- Never wrap the cord tightly around the appliance as this could place undue stress on the cord where it enters the appliance and cause it to fray and break.
- DO NOT OPERATE THE APPLIANCE IF THE POWER CORD SHOWS ANY DAMAGE OR IF THE APPLIANCE WORKS INTERMITTENTLY OR STOPS WORKING ENTIRELY.



## **APPEARANCE AND INFORMATION: MIROPURE 2-IN-1 IONIC HAIR STRAIGHTENER BRUSH**

- LED Display(12 Levels)
- Temperature adjustment/MCH heater ON/OFF button
- 360-degree rotatable power cord
- Nanometer comb tooth
- Built-in heater
- Brush handle

Built-in heater

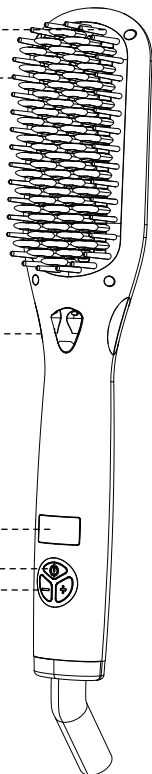
Nanometer comb tooth

Negative-ion

LED display

On/ Off switch

Temperature setting



## SPECIFICATIONS:

Model: WF049

Product name:

MiroPure Hair Straightener Brush

<b>Model</b>	WF049
<b>Heater</b>	MCH
<b>Rate Power</b>	55W
<b>Rate Frequency</b>	50/60Hz
<b>Rate Voltage</b>	100V-240V
<b>Product</b>	Hair Straightener Brush
<b>Indicate</b>	Digital
<b>Net Weight</b>	367g
<b>Dimension</b>	27*6.2*3.5cm

## OPERATION INSTRUCTIONS:

**PLEASE USE IT ON DRY HAIR ONLY .**

**Step 1:** Insert power plug into a wall socket. Press the power button the LED light will on and the heater begins to warm up. Press +/- button to adjusting temperature according to your hair types.

**Step 2:** Press +/- button to choose different temperature settings according to different hair types. The twelve different temperature settings available are: 250 ℉-450 ℉ (120°C-230°C).

**Step 3:** When the brush is heating up, the temperature setting LED light will keep flashing until the set temperature is reached. Once the temperature setting LED light stays on, the brush is ready to use for hair straightening. Please hold the brush handle and keep a safe distance from exposed skin and eyes.

**Step 4:** For straightening curly hair or other hard to straighten hair, set the temperature to 230°C (450°F). For tinted & permed hair or fine blond hair, set the temperature to 150°C-180°C (310°F-350°F). For other ordinary hair, set the temperature to 180°C- 200°C (350°F-390°F).

**Step 5:** Hold certain parts of your hair with clips (thickness less than 100mm) from top, middle, back, front and sides in order to make hair the styling operation easier.

**Step 6:** First straighten the lower layers of your hair and then pass to upper layers. Take a small part of your hair, disperse it in the middle of the brush and then pull tight. Hold the hair straightener in one of your hands and comb your hair starting from the root to the tips in 15 seconds without stopping. Do not hold the hair straightener in one place for more than 10 seconds. Make sure that you are holding the hair straightener by its handle. Repeat this operation until your hair is straightened as desired.

**Step 7:** Once the hair straightening is complete, longpress the power button to power off the hair straightener. Then unplug it and let it cool down before storing.

**Note:** Please do not comb your hair before it has cooled down, otherwise the hairstyle may be affected.

## **AUTO-OFF SAFETY FUNCTION:**

The hair straightener has an auto-off safety feature and will turn off after 60 minutes of use. If you want to use it again, simply press the power button to turn it on again.

## **TEMPERATURE SETTING:**

The default operating temperature setting is 350°F(180°C). You can short press the temperature adjustment button to adjust the operating temperature. During heating, the LED temperature display will flash. It will stop flashing and stay on when the set temperature is reached.

## **OPERATING TEMPERATURE ADVICE:**

Setting 1; 150°C (310°F), suitable for first time users or users with thin, fine hair or bleached hair.

Setting 2; 180°C (350°F), suitable for dyed or dark color hair.

Settings 3 & 4; 200°C (390°F) to 210°C (410°F), suitable for normal or slightly curled hair.

Setting 5; 230°C (450°F), suitable for thick and very curly hair, or difficult to style hair.

## **ATTENTION:**

- Your hair straightener has an automatic turning off feature for your security. the hair straightener turns off after a usage of 60 minutes. If you want to use it again, you can press the power button to turn on the appliance.
- First time usage of this appliance may occasionally cause a slight burning smell or very light smoke, which is caused by the small amount of residual oil on the MCH heater burning off when heated. This is normal and safe to use and should only last a few seconds.
- It is important to set the appropriate working temperature for your hair before usage in order to prevent your hair getting damaged.
- When the MCH heater is on, the appliance can get extremely, hot make sure you keep it away from eyes nose hands neck and facial areas.

## MAINTENANCE AND CLEANING:

- Unplug the appliance and allow it to cool.
- Wipe the surfaces with a damp cloth to clean.
- Do not use harsh or abrasive cleaning agents or solvents.
- Store the appliance in cool, dry place.

## SERVICE AND GUARANTEE:

Defects affecting product functionality appearing within the guarantee period will be corrected by replacement or repair at our option provided Defects from repair by an unauthorized dealer are not covered.

Consumables are excluded your statutory rights are not affected.

Warranty date: 365 days

## ENVIRONMENTAL PROTECTION:



To avoid environmental and health problems due to hazardous substances in electrical and electronic goods, appliances marked with this symbol must not be disposed of with unsorted municipal waste, but recovered, reused or recycled.



MiroPure

## CUSTOMER SERVICE

✉ [support@miropureshop.com](mailto:support@miropureshop.com)

☎ 1-855-666-5111

---

Made in China