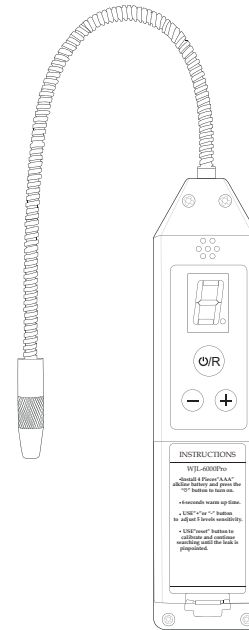


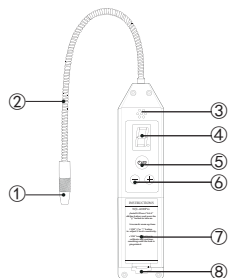
WJL-6000 PRO REFRIGERANT LEAK DETECTOR



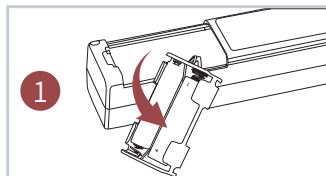
Thank you for purchasing the WJL-6000 Pro. Incorporated with advanced leak detect technology the WJL-6000 Pro is an easy to use and compact halogen leak detector.

Structure:

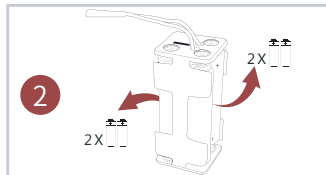
1. Sensing tip
2. Flexible probe
3. Buzzer alarm
4. LED display
5. Power button
6. Sensitivity adjustment
7. Battery compartment
8. Shell



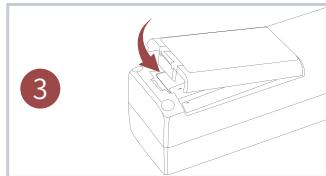
Battery Installation



Step 1: Open and take the battery rack out of the device.

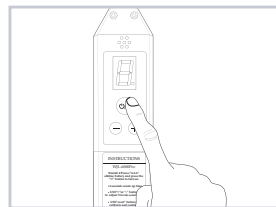


Step 2: Install total 4 x AAA batteries.

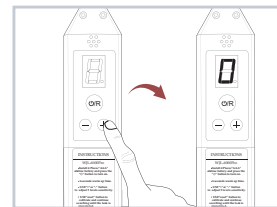


Step 3: Return the battery rack to the device.

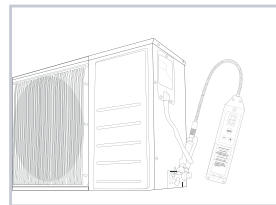
Setup



- Power (on/off): short press power button. A continuous beep tone will indicate the unit is normally functioning.



Once the sensitivity is set up successfully, the digital number will flash twice and back to 0. The device is now ready to detect the gas leak.



- Hold the device to the possibly leaking area.



- Detection: when a leak is detected a result will appear in digital display and audible tone will change to a siren sound.

Specifications

- Operating temperature: 0 °C - 52 °C
- Maximum sensitivity: 3 gr/yr, for all halogenated refrigerants
- Battery life: approx 50 hours of normal use
- Response time: instant
- Work mode: continuous, no limitations
- Fixed probe length: 20 cm
- Dimension: 22.9 x 6.5 x 6.5 mm
- Warm up time: 6 seconds approx
- Power supply: 4 x 1.5V DC AAA # batteries (no included)

FAQ

Q1: Why does the Refrigerant Gas Leak Detector beep continuously after it is turned on? Can it be turned off?

A: After the leak detector is turned on, it will beep slowly and continuously, which proves that it is operating normally and this sound cannot be turned off. When it detects a refrigerant gas leak, it will make a rapid beep.

Q2: The detector didn't detect a thing, what should I do?

A: Please inspect whether the 4 batteries are in a stable connection or the voltage is below acceptable operating level. If not, please inspect whether the tip is dirty and in a stable connection with the probe.

Q3: What does it mean when the screen displays " b " ?

A: When the battery voltage is below acceptable operating level, the LCD screen display " b " .

Q4: What does it mean when the screen displays " E " ?

A: This means that the sensor is too wet, the sensor should be removed, blown, and reinstalled.

Q5: How can the detector avoid false alarms?

A: WJL-6000PRO has Automatic-circuit function. when in the measuring state, automatic circuit will follow the halogen gas concentration changes in the environment and is able to avoid false alarms. Another option to avoid the false alarms is to move the device to open-air environment. Then please restart the device and adjust sensitivity to maximum level.

Q6: What should I do if the detector keeps sounding like siren after power on?

A: It may be caused by the high humidity in the environment, please press and hold the power button for three seconds to reset, and then use it normally.

Notices

- Do not submerge the product in water.
- Do not expose the product to temperatures exceeding 60°C.
- Do not leave the product in direct sunlight for long periods of time.
- Do not dismantle or attempt repairs of the product without authorisation.
- Remove the batteries when not used for extended periods of time.
- Keep the sensing tip clean from dust, moisture and grease.
- If dirty, clean the tip by immersing in mild solvent such as alcohol for several seconds then using compressed air or a towel to dry.
- Do not use solvents such as gasoline, turpentine minerals etc to clean the product.
- Turn the tool off before replacing the sensing tip to avoid mild electric shock.

Technical Specifications



Video Instructions

